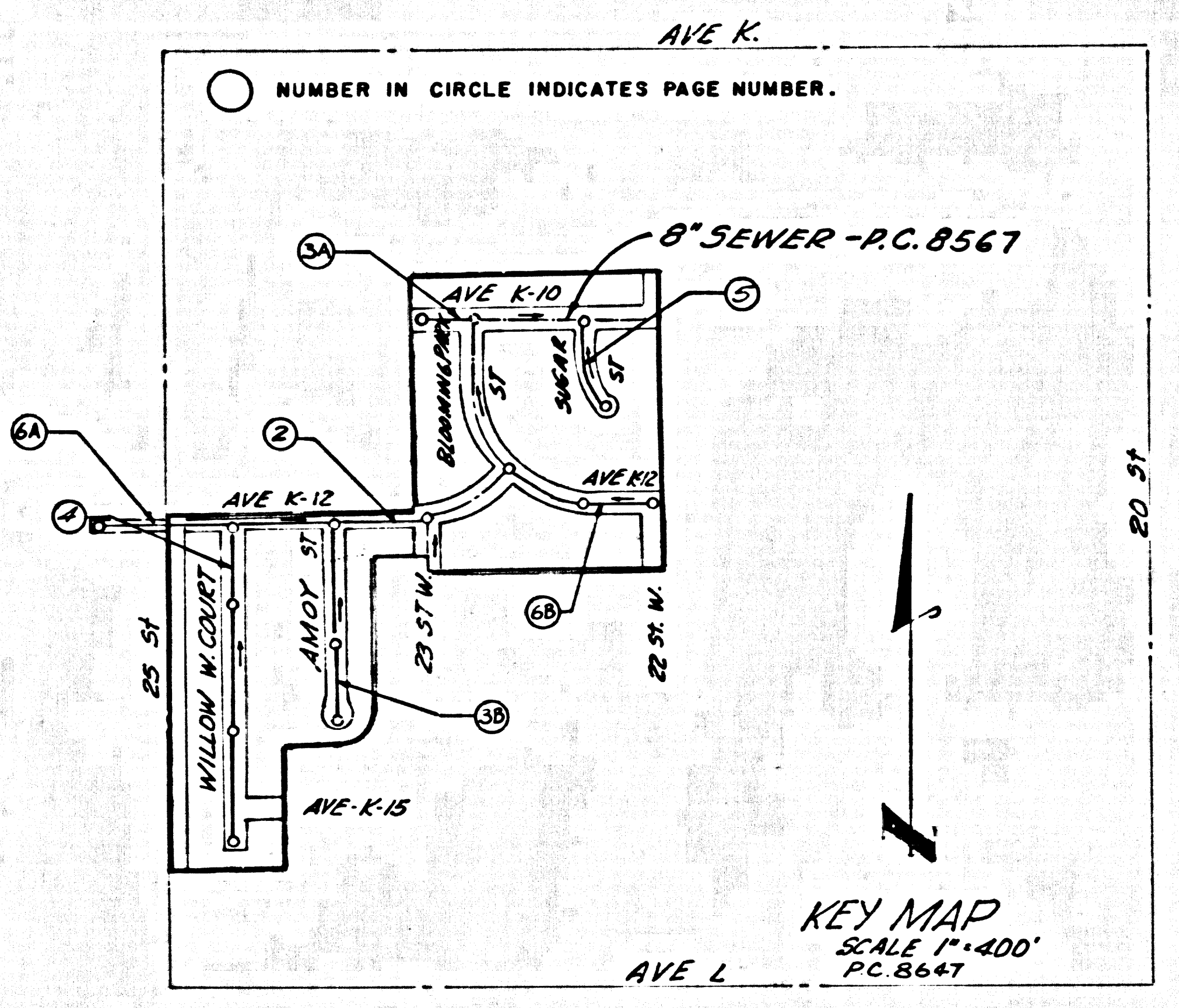


B.M. C.L. 2210 ELEV. 2448.566 (A.M. 00)  
 R.D. B.M. Top W. Curb 1 1/4 B.C.R.  
 S.W. Cor. Ave. K and 20th St.  
 N. 20th W. & 76-3 & Intersection  
 LANCASTER QUAD. 1958



LOT NUMBERS 48 TO 51,  
 64 TO 70, 80 TO 89 AND  
 93 TO 99 SERVED BY P.C.  
 8567

**GENERAL NOTES:**

1. ELEVATIONS ARE IN FEET ABOVE U.S.C. & G.S. SEA LEVEL DATUM OF 1929.
2. NO REVISIONS SHALL BE MADE IN THESE PLANS WITHOUT THE APPROVAL OF THE COUNTY ENGINEER.
3. NO REPRESENTATIVE OF THE COUNTY ENGINEER WILL SURVEY OR LAY OUT ANY PORTION OF THE WORK.
4. GRADES TO WHICH THIS IMPROVEMENT IS TO BE CONSTRUCTED ARE SHOWN ON PLANS AND PROFILES. GRADE POINTS FOR TOP OF CURB, CENTER LINE OF STREETS, OR CENTER LINE OF ALLEYS ARE SHOWN BY CIRCLES ON PROFILES. AT ALL POINTS BETWEEN DESIGNATED POINTS THE GRADE SHALL BE ESTABLISHED SO AS TO CONFORM TO A STRAIGHT LINE DRAWN BETWEEN SAID DESIGNATED POINTS.
5. THE PRIVATE ENGINEER SHALL FURNISH THE COUNTY ENGINEER WITH GRADE SHEETS AND STATIONING FOR ALL HOUSE LATERALS AND "T" OR "Y" BRANCHES AND SHALL PROVIDE STAGES FOR THEM AT THEIR PROPER LOCATIONS WITH STATIONING PLAINLY MARKED. ALL HOUSE LATERALS SHALL BE CONSTRUCTED IN A STRAIGHT ALIGNMENT AT RIGHT ANGLES FROM THE MAIN LINE SEWER EXCEPT AS SHOWN ON THE PLANS. HOUSE LATERALS FROM CHIMNEYS SHALL NOT HAVE AN ANGLE OF LESS THAN 45° WITH THE MAIN LINE SEWER. ANY CHANGE IN ALIGNMENT SHALL BE REQUESTED IN WRITING BY THE PRIVATE ENGINEER.
6. THE PRIVATE ENGINEER SHALL FURNISH THE HOUSE LATERAL DEPTH AT THE PROPERTY LINE BELOW THE TOP OF CURB ELEVATION FOR EACH HOUSE LATERAL ON THE GRADE SHEET.
7. BEFORE WORK CAN BE STARTED, THE CONTRACTOR MUST OBTAIN A PERMIT TO EXCAVATE IN COUNTY STREETS FROM THE L.A. COUNTY ROAD DEPT., DISTRICT OFFICE NO. 3 AND PAY A FEE TO THE COUNTY ENGINEER, 9130 E. IMPERIAL HIGHWAY, DOWNNEY, CALIF. OR AN OFFICE OF THE COUNTY ENGINEER, REGIONAL OFFICE, TO COVER THE COST OF CONSTRUCTION INSPECTION AND RECORD PLANS.
8. IF WORK IS TO BE DONE IN A STATE HIGHWAY, A PERMIT MUST BE OBTAINED FROM THE STATE OF CALIFORNIA, DIVISION OF HIGHWAYS, 120 SOUTH WASHINGTON STREET, LOS ANGELES, CALIFORNIA.
9. APPROVAL OF THIS PLAN BY THE COUNTY OF LOS ANGELES DOES NOT CONSTITUTE A REPRESENTATION AS TO THE ACCURACY OF THE LOCATION OF OR THE EXISTENCE OR NON-EXISTENCE OF ANY UNDERGROUND UTILITY PIPE, OR STRUCTURE WITHIN THE LIMITS OF THIS PROJECT. THIS NOTE APPLIES TO ALL PAGES.
10. REFER TO SECTION PARAGRAPHS OF THE STANDARD SPECIFICATIONS, INCLUDING SAFETY ORDERS.
11. THE CONTRACTOR SHALL NOTIFY ALL UTILITY COMPANIES 24 HOURS PRIOR TO COMMENCEMENT OF WORK.

**CONSTRUCTION NOTES:**

1. WORK SHALL BE CONSTRUCTED ACCORDING TO THE STANDARD SPECIFICATIONS FOR PUBLIC WORKS CONSTRUCTION (1970 EDITION) WITH 1972 SUPPLEMENTS AND COUNTY ENGINEER SPECIAL PROVISIONS FOR THE CONSTRUCTION OF SANITARY SEWERS DATED APRIL 1, 1972, AND SHALL BE PROCURED ONLY IN THE PRESENCE OF THE COUNTY ENGINEER.
2. THE CONTRACTOR SHALL NOTIFY THE CONSTRUCTION DIVISION BY TELEPHONE, SECTION 9-47, EXT. 8159, AT LEAST TWENTY-FOUR HOURS BEFORE STARTING ANY WORK UNDER THIS CONTRACT.
3. HOUSE LATERALS TO BE CONSTRUCTED WITH INVERTS AT PROPERTY LINE 4 FEET BELOW CURB GRADE EXCEPT AS NOTED.
4. WYE OR THE BRANCHES MUST BE USED FOR CONNECTIONS TO MAINLINE SEWERS EXCEPT AS NOTED.
5. ALL STRUCTURES SHALL BE EITHER BRICK MANHOLES PER 5-36 OR PRECAST CONCRETE MANHOLES PER 5-36, EXCEPT AS NOTED.
6. PROVIDE STAGES ON THE PROPERTY LINE OR PROPERTY LINES PRODUCED AT RIGHT ANGLES TO THE SEWER LINE AT THE CENTER LINE OF EACH MANHOLE.
7. MANHOLE TOPS IN UNIMPROVED RIGHTS OF WAY TO BE SIX INCHES ABOVE FINISHED GRADE.
8. VITRIFIED CLAY PIPE JOINTS SHALL BE TYPE "B", "C", OR "D" PER STANDARD SPECIFICATIONS SECTION 306-3.
9. IF A POWER POLE IS WITHIN THREE FEET OF THE SEWER, THE SEWER SHALL BE ENCASED, PER 5-23, CASE II, TWO FEET ON EACH SIDE FROM THE POINT OF INTERFERENCE.
10. IF DURING THE COURSE OF CONSTRUCTION IT IS DETERMINED THAT THERE IS LESS THAN FOUR FEET OF COVER OVER THE TOP OF A MAIN LINE OR HOUSE LATERAL V.C.P. SEWER WHICH IS NOT INDICATED ON THE PLANS, THE PIPE SHALL BE ENCASED PER 5-23, CASE II UNLESS OTHERWISE APPROVED BY THE COUNTY ENGINEER.
11. ALL JOINTS BETWEEN CAST IRON PIPE AND VITRIFIED CLAY PIPE SHALL BE MADE WITH A RUBBER SLEEVE JOINT, TYPE "C" OR "D", WITH BUSHING IF NECESSARY PER STANDARD SPECIFICATIONS, SECTION 306-3.
12. SEWERS TO BE TESTED FOR LEAKAGE PER SECTION 306-3.2.7 OF THE STANDARD SPECIFICATIONS AND SPECIAL PROVISIONS.
13. RESURFACE ALL TRENCHES WITHIN PAVED AREAS TO MEET L.A. COUNTY ROAD DEPT. OR CALIFORNIA STATE HIGHWAY REQUIREMENTS BY ACCORDANCE WITH PERMITS.
14. FULL COMPLIANCE WITH SECTION 306-19.3 OF THE SPECIAL PROVISIONS WILL BE REQUIRED FOR BACKFILL IN STREETS. CERTIFICATION OF BACKFILL COMPACTION AND SAND EQUIVALENTS BY A QUALIFIED, REGISTERED TESTING LABORATORY SHALL BE PROVIDED BY THE PERMITTEE PRIOR TO THE ISSUANCE OF A CERTIFICATE OF PARTIAL ACCEPTANCE.

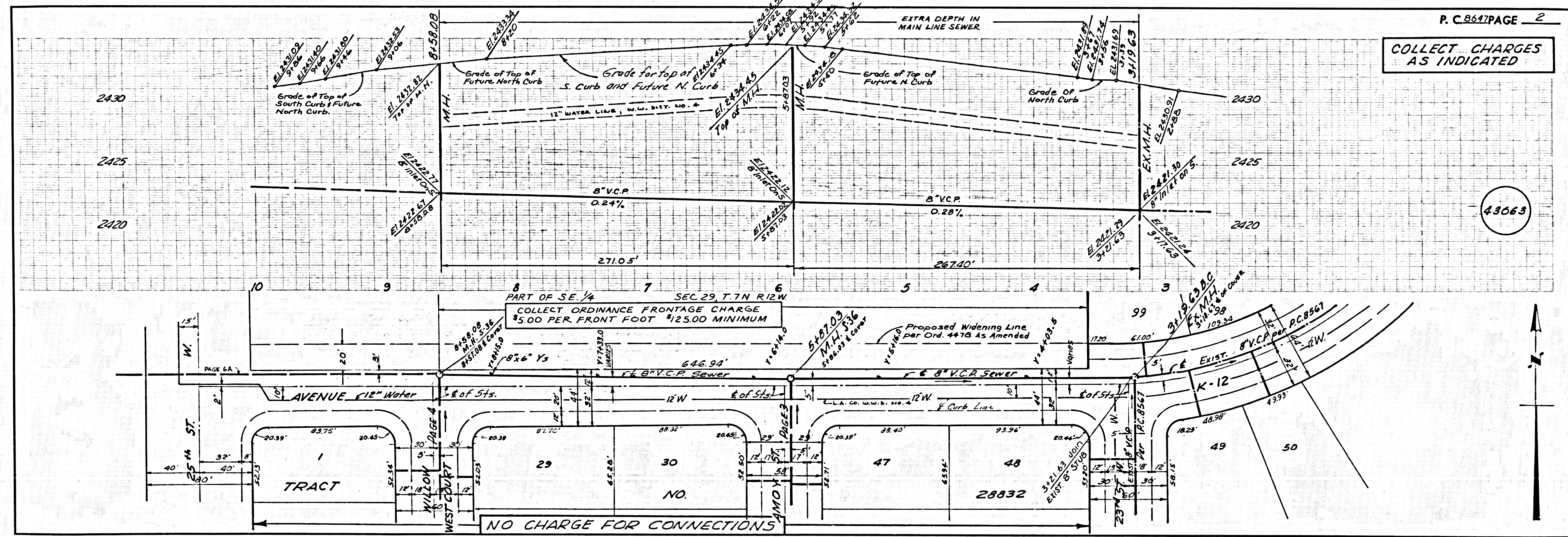
CONSTRUCTED IN  
 TRACT NO. 28832  
 PRIVATE CONTRACT NO. 8647

W.S. 71  
 - 3 SHEETS; 6 PAGES -  
 SCALE: VERT. 1" = 4'  
 HORIZ. 1" = 40'  
 NOV. 1971  
 PREPARED IN THE OFFICES OF  
 CROWN ENGINEERING & SURVEYING CORP.  
 8455 BURBANK BLVD., TARZANA, CALIF.  
 BY: *W. J. J. J.*  
 REG. C. E. No. 8759

THE FOLLOWING LATEST REVISED STANDARD PLANS ON FILE IN THE OFFICE OF THE COUNTY ENGINEER SHALL APPLY IN THE CONSTRUCTION OF THIS PROJECT.

URBANS	5-1
MINIMUM PUBLIC SAFETY REQUIREMENTS	5-2
BRICK MANHOLE	5-3
STANDARD MANHOLE STEP	5-7
BRIDGING FOR SEWER PIPE	5-31
CHASING AND ENCASING	5-32
WYE OR THE SUPPORT	5-34
ALLOWABLE TRENCH WIDTHS	5-35
LOCKING MANHOLE FRAME AND COVER	5-36
NON-REINFORCED PRECAST CONCRETE MANHOLE	5-38

COUNTY OF LOS ANGELES, CALIFORNIA  
 HARVEY T. BRANDT, COUNTY ENGINEER  
 JOHN D. PARKHURST, CHIEF ENGINEER  
 CO. SAN. DIST. NO. 14  
 APPROVED *John D. Parkhurst* 11/1/71  
 REGIONAL ENGINEER (DATE)  
 APPROVED *H. T. Brandt*  
 OFFICE ENGINEER  
 CHECKED *R. L. Kopyev* 11/1/71  
 DATE  
 REG. C. E. No. 16782  
 LANCASTER BLDG. DIST. 8.0 J. N. 0250.02

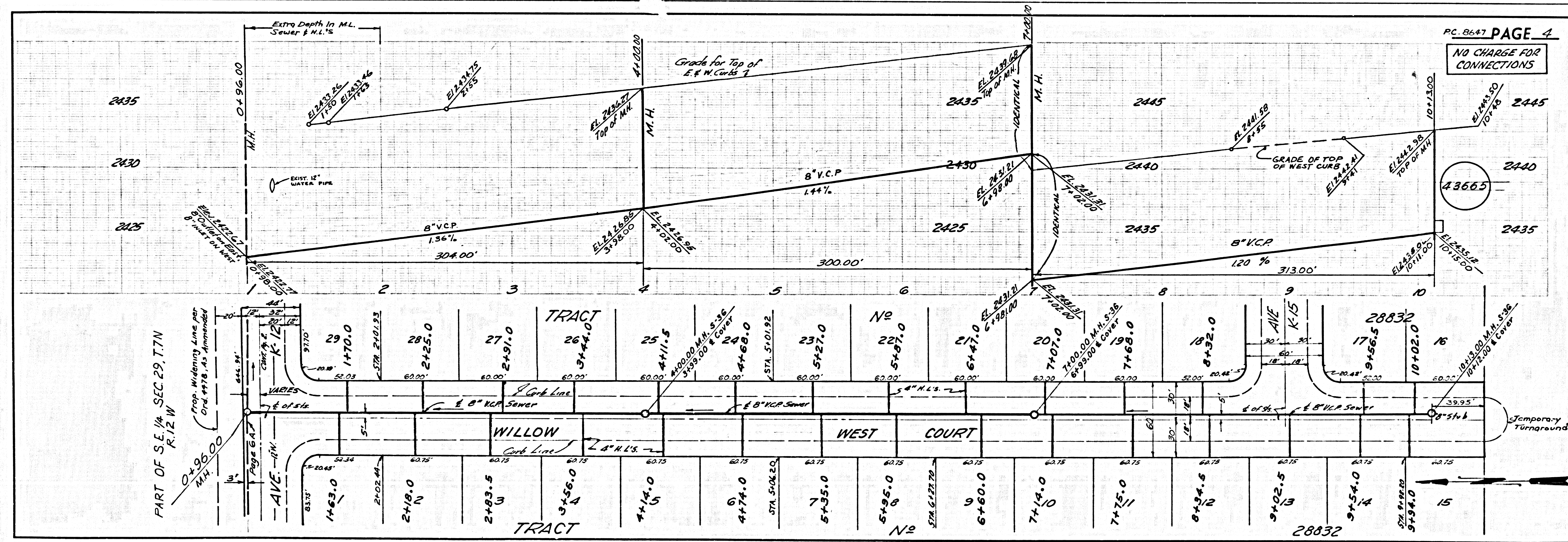
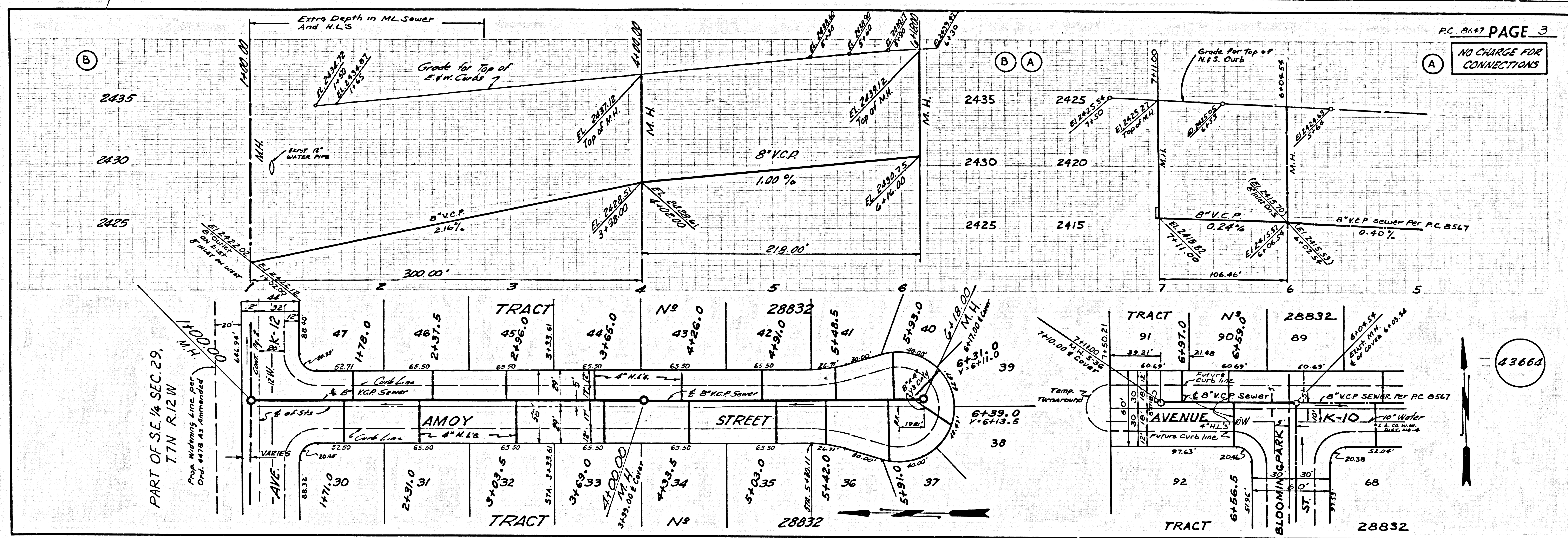


P. C. 8647 PAGE 2  
 COLLECT CHARGES  
 AS INDICATED

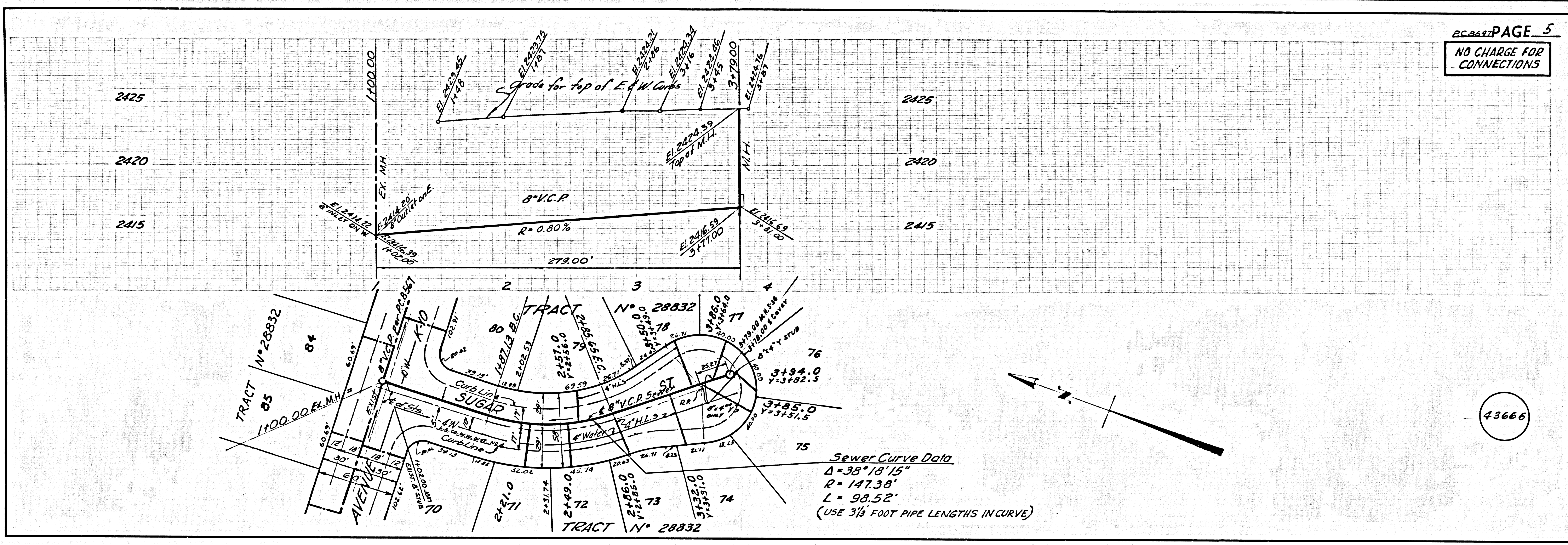
PART OF SE 1/4 SEC. 29 T. 7 N. R. 12 W.  
 COLLECT ORDINANCE FRONTAGE CHARGE  
 \$5.00 PER FRONT FOOT \$125.00 MINIMUM

NO CHARGE FOR CONNECTIONS

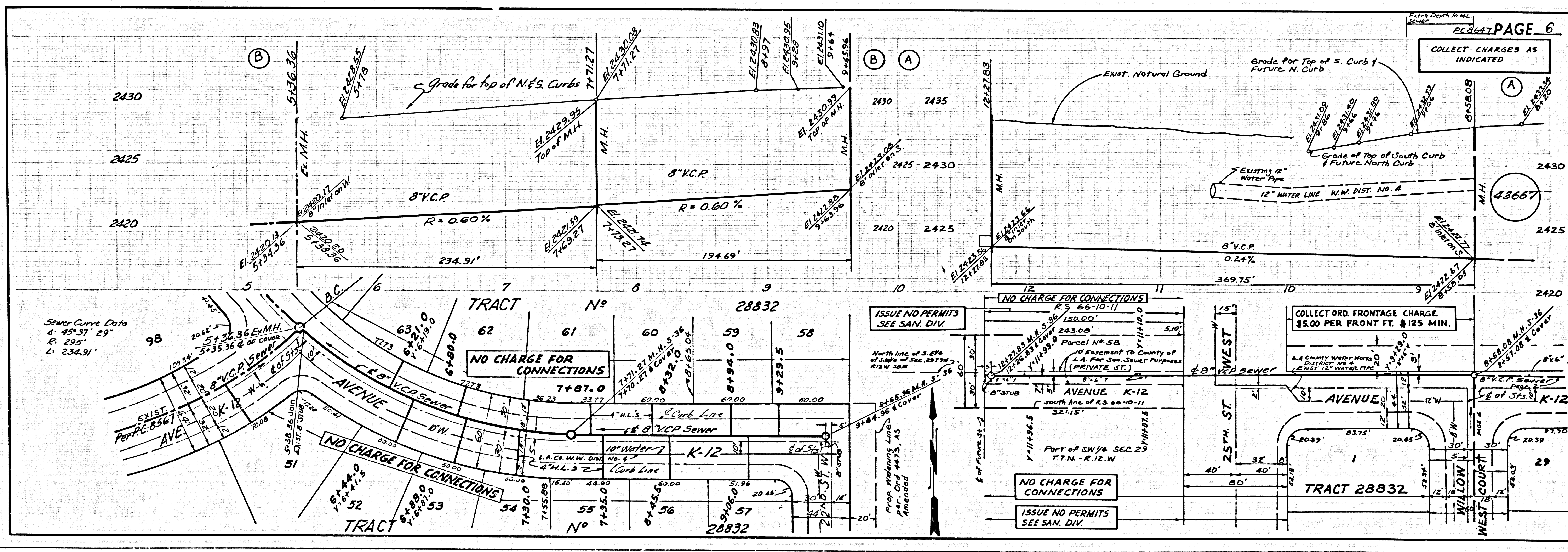








Sewer Curve Data  
 $\Delta = 38^{\circ}18'15''$   
 $R = 147.38'$   
 $L = 98.52'$   
 (USE 3/8 FOOT PIPE LENGTHS IN CURVE)



Sewer Curve Data  
 $\Delta = 45^{\circ}31'29''$   
 $R = 225'$   
 $L = 234.91'$