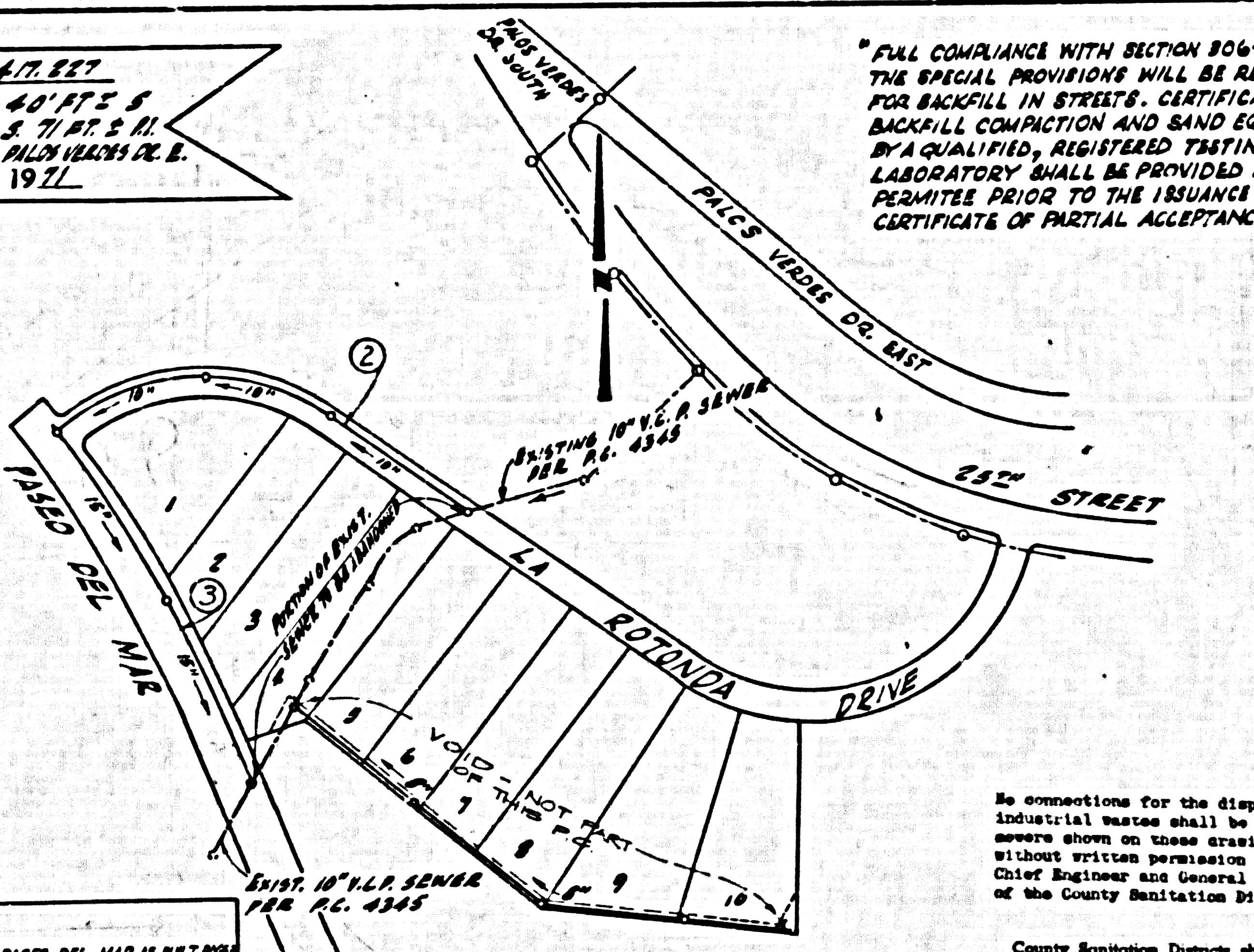


TO BE CONSTRUCTED BY
TRACT No 30583
PRIVATE CONTRACT NO.8652

W.S. 27
2 SHEETS, 4 PAGES
SCALE: VERT. 1"=4' HORIZ. 1"=40'
SEPT., 1971
PREPARED IN THE OFFICES OF
LANGO ENGINEERING
BY: **C. M. Leonard**
REG. C. E. No. 11187

50008

B.M. 6015 ELEV. 477.887
C.S. MON. IRON ON 40 FT. S
C/L PALOS VERDES DR. S. 71 FT. S. H.
4 200 FT. S. W. C/L INT. PALOS VERDES DR. E.
PALOS VERDES QUAD. 197L



"FULL COMPLIANCE WITH SECTION 806-1.9.3 OF THE SPECIAL PROVISIONS WILL BE REQUIRED FOR BACKFILL IN STREETS. CERTIFICATION OF BACKFILL COMPACTION AND SAND EQUIVALENTS BY A QUALIFIED, REGISTERED TESTING LABORATORY SHALL BE PROVIDED BY THE PERMITTEE PRIOR TO THE ISSUANCE OF A CERTIFICATE OF PARTIAL ACCEPTANCE."

- GENERAL NOTES:**
1. ELEVATIONS ARE IN FEET ABOVE U.S.C. & G.S. SEA LEVEL DATUM OF 1929.
 2. NO REVISIONS SHALL BE MADE IN THESE PLANS WITHOUT THE APPROVAL OF THE COUNTY ENGINEER.
 3. THE RESPONSIBILITY OF THE COUNTY ENGINEER WILL BE LIMITED TO THE LOCATION OF THE WORK.
 4. GRADES TO WHICH THIS SPECIFICATION IS TO BE CONFORMED ARE SHOWN ON PLANS AND PROFILES. GRADE POINTS FOR FOOT OR SMALL CHANGES IN GRADE OR CHANGES IN GRADE ARE SHOWN BY CIRCLES ON PROFILES AT ALL POINTS BETWEEN SPOKE MARKS. POINTS THE GRADE SHALL BE CONFORMED TO AS TO CONFORM TO A STRAIGHT LINE BETWEEN SPOKE DESIGNATED POINTS.
 5. THE PRIVATE CONTRACTOR SHALL FURNISH THE COUNTY ENGINEER WITH GRADE SHEETS AND STATIONING FOR ALL HOUSE LATERALS AND "T" OR "Y" BRANCHES AND SHALL PROVIDE STAKES FOR THESE AT THESE PROPOSED LOCATIONS WITH STATIONING PLANNED THEREON. ALL HOUSE LATERALS SHALL BE CONSTRUCTED BY A STRAIGHT ALIGNMENT AT RIGHT ANGLES FROM THE MAIN LINE UNLESS SHOWN AS SHOWN ON THE PLANS. HOUSE LATERALS FROM CHIMNEYS SHALL HAVE AN ANGLE OF LESS THAN 45° WITH THE MAIN LINE UNLESS SHOWN OTHERWISE. ALL CHANGES IN ALIGNMENT SHALL BE INDICATED BY THE PRIVATE CONTRACTOR.
 6. THE PRIVATE CONTRACTOR SHALL FURNISH THE HOUSE LATERAL SIZES AT THE PROPERTY LINE WITHIN THE TOP OF CURB ELEVATION FOR EACH HOUSE LATERAL ON THE GRADE SHEET.
 7. BEFORE WORK CAN BE STARTED, THE CONTRACTOR MUST OBTAIN A PERMIT TO EXCAVATE IN COUNTY STREETS FROM THE L.A. COUNTY ROAD DEPT., DISTRICT OFFICE NO. 9, AND PAY A FEE TO THE COUNTY ENGINEER, ROOM #646, 4180 S. HARVEY AVENUE, DOWNHART, GLENDALE, BRIDGEWAY-CANTONELLA VALLEY REGIONAL OFFICE, TO COVER THE COST OF CONSTRUCTION INSPECTION AND SECTION STAKES.
 8. IF WORK IS TO BE DONE BY A STATE EMPLOYEE, A PERMIT MUST BE OBTAINED FROM THE STATE OF CALIFORNIA, DIVISION OF HIGHWAYS, 128 SOUTH SPRING STREET, LOS ANGELES, CALIFORNIA.
 9. APPROVAL OF THIS PLAN BY THE COUNTY OF LOS ANGELES DOES NOT CONSTITUTE A REPRESENTATION AS TO THE ACCURACY OF THE LOCATION OR OF THE EXISTENCE OR NON-EXISTENCE OF ANY UNDISCOVERED UTILITY PIPE, OR STRUCTURE WITHIN THE LIMITS OF THE PROJECT. THIS NOTE APPLIES TO ALL PAGES.
 10. REFER TO SECTION 714.43 OF THE STANDARD SPECIFICATIONS, REBARRING SAFETY CHAINS.

REVISIONS

1. REVISED LOCATION OF BEG. OF 18" V.C.P. ON PASO DEL MAR AS BUILT FROM
2. REVISED LOCATION OF END OF 18" V.C.P. ON LA ROTONDA, PAGE 2, AS BUILT - JUNE 20, 1972

APPROVED: *[Signature]* DATE: 6/11/71
BY: C.E. NO. 1065

REVISION No 2

RAISED THE CURB AND SIDEWALK TOPS IN PASO DEL MAR AT STR. S. 12404.7 AND 12421.47 TO 6" ABOVE FINISH GRADE, AS STREET IS NOT TO BE PAVED AT THIS TIME

APPROVED: *[Signature]* DATE: 4-21-75
BY: C.E. NO. 18544

INDEX MAP
TRACT No 30583
SCALE 1"=40'

No connections for the disposal of industrial wastes shall be made to sewers shown on these drawings without written permission from the Chief Engineer and General Manager of the County Sanitation Districts.

County Sanitation Districts shall be notified prior to the following so that required inspection can be made (Phone 609-4095 - 638-1181)

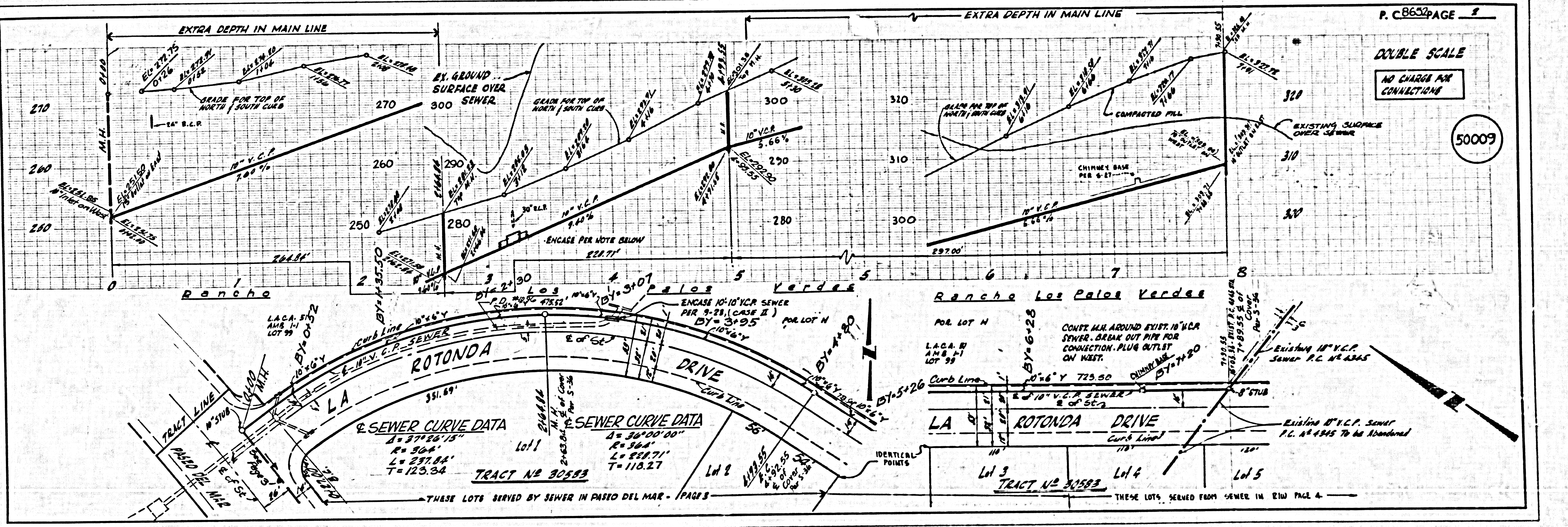
Acceptance of the project.

- CONSTRUCTION NOTES:**
1. WORK SHALL BE CONSTRUCTED ACCORDING TO THE STANDARD SPECIFICATIONS FOR PUBLIC WORKS CONSTRUCTION PART DIVISION WITH SUPPLEMENTARY AND COUNTY ENGINEER SPECIAL PROVISIONS FOR THE CONSTRUCTION OF SA. LATEST EDITION APRIL 1970 AND SHALL BE PROVIDED ONLY IN THE PRESENCE OF THE COUNTY ENGINEER.
 2. THE CONSTRUCTION SHALL BE IN ACCORDANCE WITH THE CONSTRUCTION SYSTEM OF THE COUNTY ENGINEER.
 3. FOUR HOURS BEFORE STARTING ANY WORK UNDER THIS CONTRACT.
 4. HOUSE LATERALS TO BE CONSTRUCTED WITH INVERTS AT PROPERTY LINE & PIPE SHALL NOT BE SHOWN EXCEPT AS NOTED.
 5. WORK ON THE BRANCHES MAY BE UNDER FOR CONSTRUCTION TO BE DONE BEFORE THE MAIN LINE IS BUILT AS NOTED.
 6. ALL STRUCTURES SHALL BE BUILT SINCE MANHOLES PER 2.0 ON PRECAST CONCRETE MANHOLES PER 2.0A, EXCEPT AS NOTED.
 7. PROVIDE STAKES ON THE PROPERTY LINE OR PROPERTY LINE PRODUCED AT RIGHT ANGLES TO THE SEWER LINE AT THE CENTER LINE OF EACH MANHOLE.
 8. MANHOLE TOPS TO BE DIMENSIONED HEIGHT OF 1' TO 2' TO BE ABOVE FINISH GRADE.
 9. TYPICAL CLAY AND JOINTS SHALL BE FIVE (5) "IN", OR "IN" PER STANDARD SPECIFICATIONS SECTION 292-1.
 10. IF A HOUSE POLE IS WITHIN THREE FEET OF THE SEWER, THE SEWER SHALL BE ENCASED PER 9-28, CASE II, TWO FEET ON EACH SIDE FROM THE POINT OF INTERFERENCE.
 11. IF DURING THE COURSE OF CONSTRUCTION IT IS DETERMINED THAT THERE IS LESS THAN FOUR FEET OF COVER OVER THE TOP OF A MAIN LINE OR HOUSE LATERAL V.C.P. SEWER WHICH IS NOT INDICATED ON THE PLANS, THE PIPE SHALL BE ENCASED PER 9-28, CASE II UNLESS OTHERWISE APPROVED BY THE COUNTY ENGINEER.
 12. ALL JOINTS BETWEEN CASES OF EACH PIPE AND TYPICAL CLAY JOINT SHALL BE MADE WITH A RUBBER GASKET JOINT, TYPE "C" OR "D", FIVE INCHES IF NECESSARY PER STANDARD SPECIFICATIONS, SECTION 292-1.
 13. SEWERS TO BE TESTED FOR LEAKAGE PER SECTION 292-2.7 OF THE STANDARD SPECIFICATIONS AND SPECIAL PROVISIONS.
 14. REPLACE ALL TRENCHES WITHIN PAVED AREAS TO MEET L.A. COUNTY ROAD DEPT. OR CALIFORNIA STATE HIGHWAY REQUIREMENTS IN ACCORDANCE WITH PERMITS.
 15. ABANDON EXIST. 18" V.C.P. SEWER BETWEEN STA. 11+22.00 AND STA. 11+26.00 AND STA. 11+26.00 AND STA. 11+26.00 PER STR. SPEC. 242.20-9. RETURN MANHOLES MANHOLE FRAMES AND COVERS TO THE L.A. COUNTY SEWER MAINTENANCE YARD, 1175 E. 87TH ST., L.A. STATIONS OF M.A.'S TO BE ABANDONED ARE: 11+76.81, 13+32.00 AND 14+28.77.

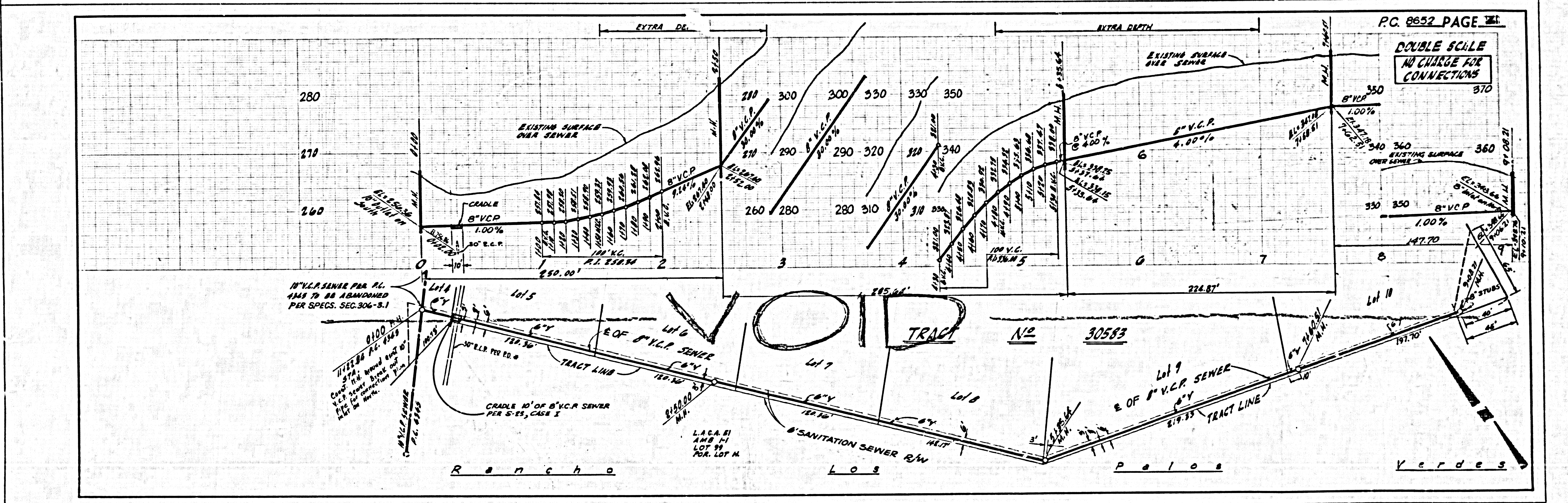
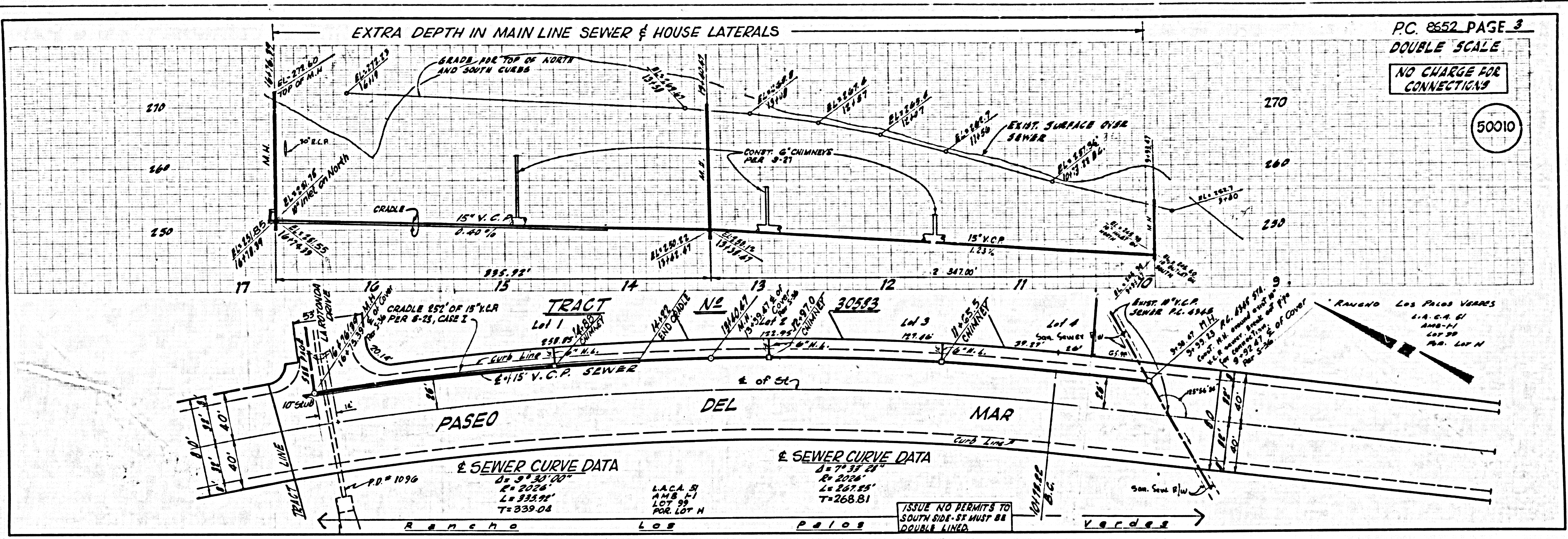
THE FOLLOWING LATEST REVISION STANDARD PLANS ON FILE IN THE OFFICE OF THE COUNTY ENGINEER SHALL APPLY IN THE CONSTRUCTION OF THIS PROJECT.

STANDARD PUBLIC SAFETY REQUIREMENTS	0-1
STANDARD MANHOLE SIZES	0-2
STANDARD MANHOLE SIZES	0-3
STANDARD MANHOLE SIZES	0-4
STANDARD MANHOLE SIZES	0-5
STANDARD MANHOLE SIZES	0-6
STANDARD MANHOLE SIZES	0-7
STANDARD MANHOLE SIZES	0-8
STANDARD MANHOLE SIZES	0-9
STANDARD MANHOLE SIZES	0-10
STANDARD MANHOLE SIZES	0-11
STANDARD MANHOLE SIZES	0-12
STANDARD MANHOLE SIZES	0-13
STANDARD MANHOLE SIZES	0-14
STANDARD MANHOLE SIZES	0-15
STANDARD MANHOLE SIZES	0-16
STANDARD MANHOLE SIZES	0-17
STANDARD MANHOLE SIZES	0-18
STANDARD MANHOLE SIZES	0-19
STANDARD MANHOLE SIZES	0-20
STANDARD MANHOLE SIZES	0-21
STANDARD MANHOLE SIZES	0-22
STANDARD MANHOLE SIZES	0-23
STANDARD MANHOLE SIZES	0-24
STANDARD MANHOLE SIZES	0-25
STANDARD MANHOLE SIZES	0-26
STANDARD MANHOLE SIZES	0-27
STANDARD MANHOLE SIZES	0-28
STANDARD MANHOLE SIZES	0-29
STANDARD MANHOLE SIZES	0-30
STANDARD MANHOLE SIZES	0-31
STANDARD MANHOLE SIZES	0-32
STANDARD MANHOLE SIZES	0-33
STANDARD MANHOLE SIZES	0-34
STANDARD MANHOLE SIZES	0-35
STANDARD MANHOLE SIZES	0-36
STANDARD MANHOLE SIZES	0-37
STANDARD MANHOLE SIZES	0-38
STANDARD MANHOLE SIZES	0-39
STANDARD MANHOLE SIZES	0-40
STANDARD MANHOLE SIZES	0-41
STANDARD MANHOLE SIZES	0-42
STANDARD MANHOLE SIZES	0-43
STANDARD MANHOLE SIZES	0-44
STANDARD MANHOLE SIZES	0-45
STANDARD MANHOLE SIZES	0-46
STANDARD MANHOLE SIZES	0-47
STANDARD MANHOLE SIZES	0-48
STANDARD MANHOLE SIZES	0-49
STANDARD MANHOLE SIZES	0-50

COUNTY OF LOS ANGELES, CALIFORNIA
HARVEY T. BRANDT COUNTY ENGINEER JOHN D. PARKHURST, CHIEF ENGINEER
APPROVED: *[Signature]* DATE: 11-19-71 APPROVED: *[Signature]* DATE: 11/19/71
CHECKED: *[Signature]* DATE: 4/14/71
REG. C.E. NO. 10655
LOMITA BLDG. DIST. 12 I.N. 0250-02



528829 88205.0M TCAPI



S288.09 E8205 ON TRACT