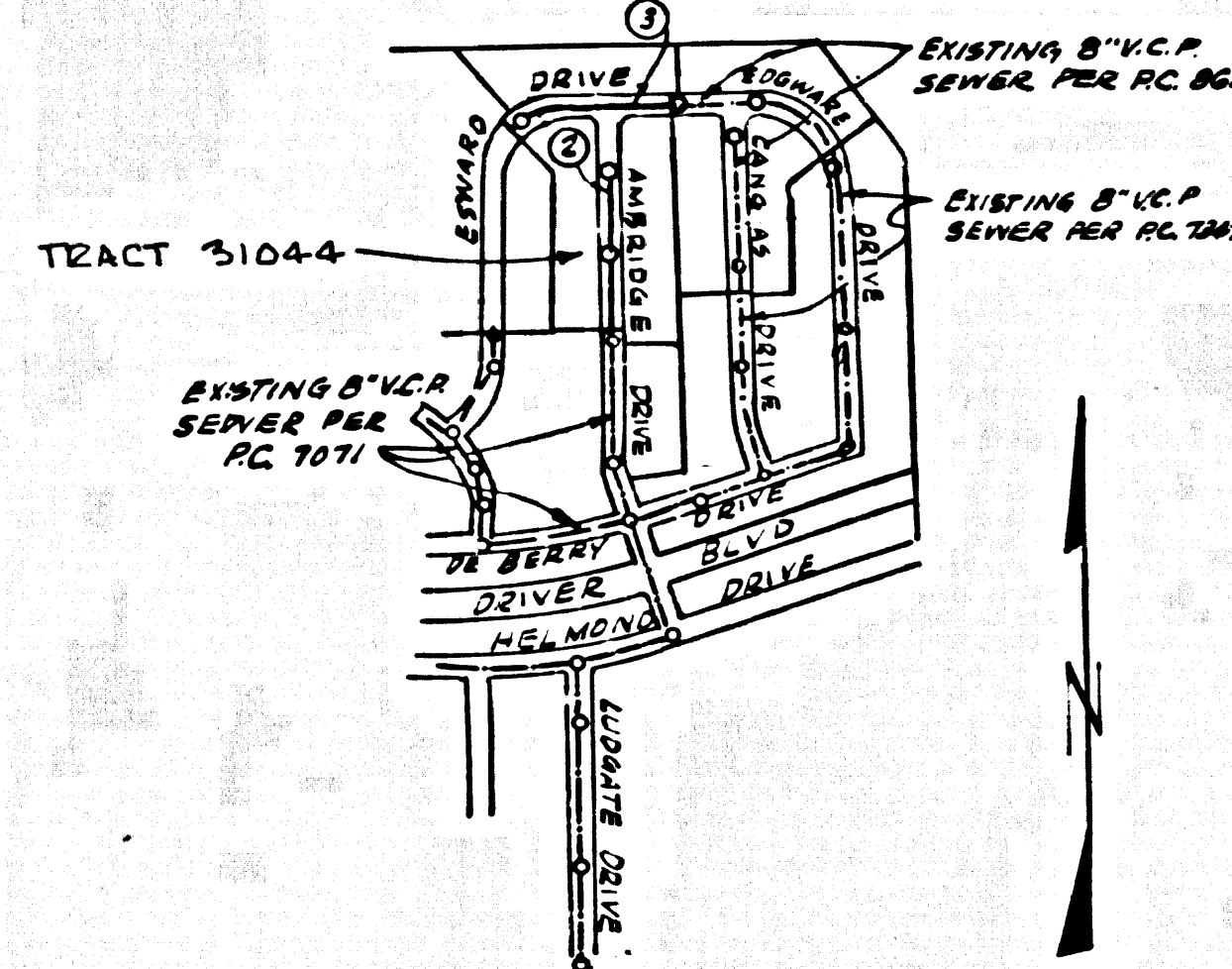


B.M. SY 5209 ELEV. 719.878
 CHIPPED SURFACE S.W. CORNER OF CURB
 800' N. LONG ST. 10' W. VENTURE
 200' N. & 200' E. 10' S. 10' E.
 10' N. 10' E. 10' S. 10' W. 10' E.
 10' N. 10' E. 10' S. 10' W. 10' E.
 QUAD. 1965

INDEX MAP
 SCALE: 1" = 400'
 TR. NO. 31044
 R.C. 8654



NOTE: NUMBERS IN CIRCLES INDICATE PAGE NOS.

GENERAL NOTES:

1. REVISIONS ARE IN PINK AND APPROVED BY THE COUNTY ENGINEER.
2. NO REVISIONS SHALL BE MADE IN THESE PLANS WITHOUT THE APPROVAL OF THE COUNTY ENGINEER.
3. NO REPRESENTATIVE OF THE COUNTY ENGINEER WILL SURVEY OR LAY OUT ANY PORTION OF THE WORK.
4. GRADES TO WHICH THIS IMPROVEMENT IS TO BE CONSTRUCTED ARE SHOWN ON PLANS AND PROFILES. GRADE POINTS FOR TOP OF CURB, CENTER LINE OF STREET, OR CENTER LINE OF ALLEYS ARE SHOWN BY CIRCLES ON PROFILES. AT ALL POINTS BETWEEN DESIGNATED POINTS THE GRADE SHALL BE ESTABLISHED SO AS TO CONFORM TO A STRAIGHT LINE DRAWN BETWEEN SAID DESIGNATED POINTS.
5. THE PRIVATE ENGINEER SHALL FURNISH THE COUNTY ENGINEER WITH GRADE SHEETS AND STATIONING FOR ALL HOUSE LATERALS AND "T" OR "Y" BRANCHES AND SHALL PROVIDE STAKES FOR THEM AT THEIR PROPER LOCATIONS WITH STATIONING PLAINLY MARKED. ALL HOUSE LATERALS SHALL BE CONSTRUCTED IN A STRAIGHT ALIGNMENT AT RIGHT ANGLES FROM THE MAIN LINE SEWER EXCEPT AS SHOWN ON THE PLANS. HOUSE LATERALS FROM CHIMNEYS SHALL NOT HAVE AN ANGLE OF LESS THAN 45° WITH THE MAIN LINE SEWER. ANY CHANGE IN ALIGNMENT SHALL BE REQUESTED IN WRITING BY THE PRIVATE ENGINEER.
6. THE PRIVATE ENGINEER SHALL FURNISH THE HOUSE LATERAL DEPTH AT THE PROPERTY LINE BELOW THE TOP OF CURB ELEVATION FOR EACH HOUSE LATERAL ON THE GRADE SHEET.
7. BEFORE WORK CAN BE STARTED, THE CONTRACTOR MUST OBTAIN A PERMIT TO EXCAVATE IN COUNTY STREETS FROM THE L.A. COUNTY ROAD DEPT., DISTRICT OFFICE NO. 9, AND PAY A FEE TO THE COUNTY ENGINEER.
8. AT THE REGIONAL OFFICE, TO COVER THE COST OF CONSTRUCTION INSPECTION AND RECORD PLANS.
9. IF WORK IS TO BE DONE IN A STATE HIGHWAY, A PERMIT MUST BE OBTAINED FROM THE STATE OF CALIFORNIA, DIVISION OF HIGHWAYS, 100 SOUTH SPRING STREET, LOS ANGELES, CALIFORNIA.
10. APPROVAL OF THIS PLAN BY THE COUNTY OF LOS ANGELES DOES NOT CONSTITUTE A REPRESENTATION AS TO THE ACCURACY OF THE LOCATION OF OR THE EXISTENCE OR NON-EXISTENCE OF ANY UNDERGROUND UTILITY PIPES, OR STRUCTURE WITHIN THE LIMITS OF THIS PROJECT. THE USER AGREES TO ALL RISKS.
11. REFER TO SECTION 204.6.1 OF THE STANDARD SPECIFICATIONS, REGARDING SAFETY ORDERS.
12. FULL COMPLIANCE WITH SECTION 204.6.1, 204.6.2 OF THE STANDARD SPECIFICATIONS WILL BE OBTAINED AND MAINTAINED IN STRICT COMPLIANCE WITH THE STANDARD SPECIFICATIONS AND SHALL BE MAINTAINED BY A QUALIFIED, REGISTERED TESTING LABORATORY SHALL BE FURNISHED BY THE CONTRACTOR TO THE ENGINEER BY A CERTIFICATE OF ANALYSIS.

CONSTRUCTION NOTES:

1. WORK SHALL BE CONSTRUCTED ACCORDING TO THE STANDARD SPECIFICATIONS FOR PUBLIC WORKS CONSTRUCTION (1979 EDITION) WITH THESE LIMITATIONS AND COUNTY ENGINEER'S PROVISIONS FOR THE CONSTRUCTION OF SANITARY SEWERS DATED 10/15/72. AND SHALL BE PROSECUTED ONLY IN THE PRESENCE OF THE COUNTY ENGINEER.
2. THE CONTRACTOR SHALL NOTIFY THE CONSTRUCTION DIVISION BY TELEPHONE, 414 N. GARDEN, RT. 938, AT LEAST TWENTY-FOUR HOURS BEFORE STARTING ANY WORK UNDER THIS CONTRACT.
3. HOUSE LATERALS TO BE CONSTRUCTED WITHIN PROPERTY LINE 4 FEET BELOW CURB GRADE EXCEPT AS NOTED.
4. WYE OR TE CONNECTIONS MAY BE USED FOR CONNECTIONS TO MAINLINE SEWERS EXCEPT AS NOTED.
5. ALL STRUCTURES SHALL BE EITHER BRICK MANHOLES PER 5.3 OR PRECAST CONCRETE MANHOLES PER 5.3M, EXCEPT AS NOTED.
6. MANHOLE DEPTHS ON THE PROPERTY LINE OR PROPERTY LINE PRODUCTIONS AT RIGHT ANGLES TO THE SEWER LINE AT THE CENTER LINE OF EACH MANHOLE.
7. MANHOLES FOR AN UNIMPROVED RIGHTS OF WAY TO BE SIX INCHES ABOVE FINISHED GRADE.
8. WITHIN CLAY PIPE JOINTS SHALL BE THE "T", "Y", OR "T" PER STANDARD SPECIFICATIONS SECTION 204.6.
9. IF A POWER POLE IS WITHIN THREE FEET OF THE SEWER, THE SEWER SHALL BE ENCASED, PER 5.3, CASE 3, TWO FEET ON EACH SIDE FROM THE POINT OF INTERFERENCE.
10. IF DURING THE COURSE OF CONSTRUCTION IT IS DETERMINED THAT THERE IS LESS THAN FOUR FEET OF COVER OVER THE TOP OF A MAIN LINE OR HOUSE LATERAL V.C.P. SEWER WHICH IS NOT INDICATED ON THE PLANS, THE PIPE SHALL BE ENCASED PER 5.3, CASE 3, UNLESS OTHERWISE APPROVED BY THE COUNTY ENGINEER.
11. ALL JOINTS BETWEEN CAST IRON PIPE AND VITRIFIED CLAY PIPE SHALL BE MADE WITH A RUBBER SLEEVE JOINT, TYPE "C" OR "D", WITH SLEEVE IF NECESSARY PER STANDARD SPECIFICATIONS, SECTION 204.6.
12. SEWERS TO BE TESTED FOR LEAKAGE PER SECTION 204.6.2 OF THE STANDARD SPECIFICATIONS AND SPECIAL PROVISIONS.
13. RESURFACE ALL TRENCHES WITHIN PAVED AREAS TO MEET L.A. COUNTY ROAD DEPT. OR CALIFORNIA STATE HIGHWAY REQUIREMENTS IN ACCORDANCE WITH PERMITS.

DOUBLE SCALE PROFILE, ALIGNMENT AND GRADE OF SANITARY SEWERS PAGE 1

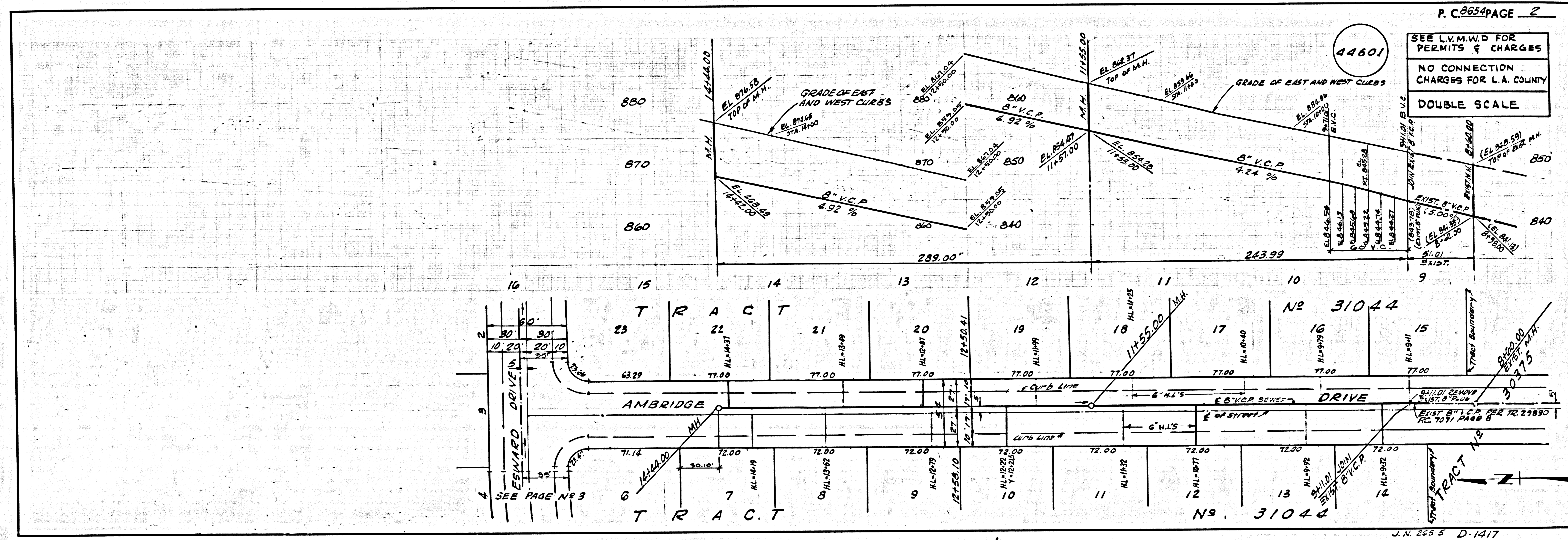
TO BE CONSTRUCTED IN
 TRACT NO. 31044
 PRIVATE CONTRACT NO. 8654

W.S. 90
 1 SHEETS, 2 PAGES
 SCALE: VERT. 1" = 8'
 HORIZ. 1" = 40'
 AUGUST 9, 1972
 PREPARED IN THE OFFICES OF
 JENSEN, JOHNSON, RITTER & ASSOCIATES
 BY: [Signature]
 REG. C. E. No. 12876

THE FOLLOWING LISTED REVISION STANDARD PLANS ON FILE IN THE OFFICE OF THE COUNTY ENGINEER SHALL APPLY IN THE CONSTRUCTION OF THIS PROJECT:

GROUND	5.1
MINIMUM PUBLIC SAFETY REQUIREMENTS	5.2
BRICK MANHOLES	5.3
STANDARD MANHOLE STEP	5.4
MANHOLES FOR SEWER PIPES	5.5
CHIMNEYS AND ENCASUREMENT	5.6
WYE OR TE SUPPORT	5.7
ALLOWABLE TRENCH WIDTHS	5.8
LOCKING MANHOLE FRAMES AND COVERS	5.9
NON-REINFORCED PRECAST CONCRETE MANHOLES	5.10

COUNTY OF LOS ANGELES, CALIFORNIA
 HARVEY T. BRANDT COUNTY ENGINEER
 LAS VEGAS MUNICIPAL WATER DISTRICT
 APPROVED [Signature] 10/17/72
 REGIONAL ENGINEER
 APPROVED [Signature] 10/17/72
 SEN. ENGR., CHIEF ENGR. A.C.E. 9555
 CHECKED [Signature] 10/17/72
 DATE
 REG. C. E. No. 17722
 CALABASAS BLDG. DIST. 9.1
 J.N. 0250.02

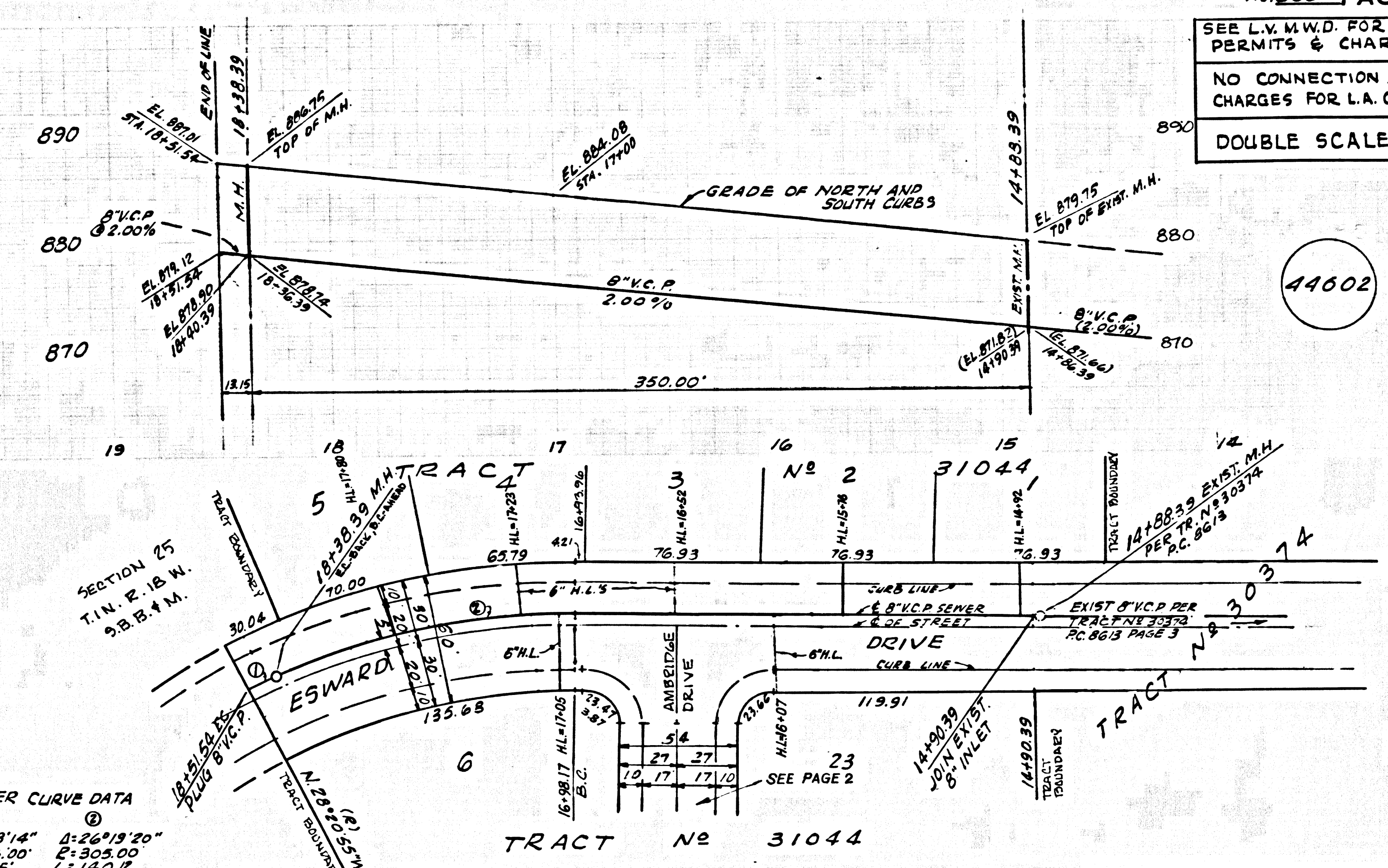


P. C. 8654 PAGE 2
 44601
 SEE L.V.M.W.D. FOR PERMITS & CHARGES
 NO CONNECTION CHARGES FOR L.A. COUNTY
 DOUBLE SCALE

PC 8654 PAGE 3

SEE L.V.M.W.D. FOR PERMITS & CHARGES
NO CONNECTION... CHARGES FOR L.A. COUNTY
DOUBLE SCALE

44602



SEWER CURVE DATA
 ①
 Δ: 118'14" Δ: 218'10"
 L: 108.00' L: 104.00'
 L: 13.15' L: 140.12'

PAGE

VOID

J.N. 265 5 D-1417