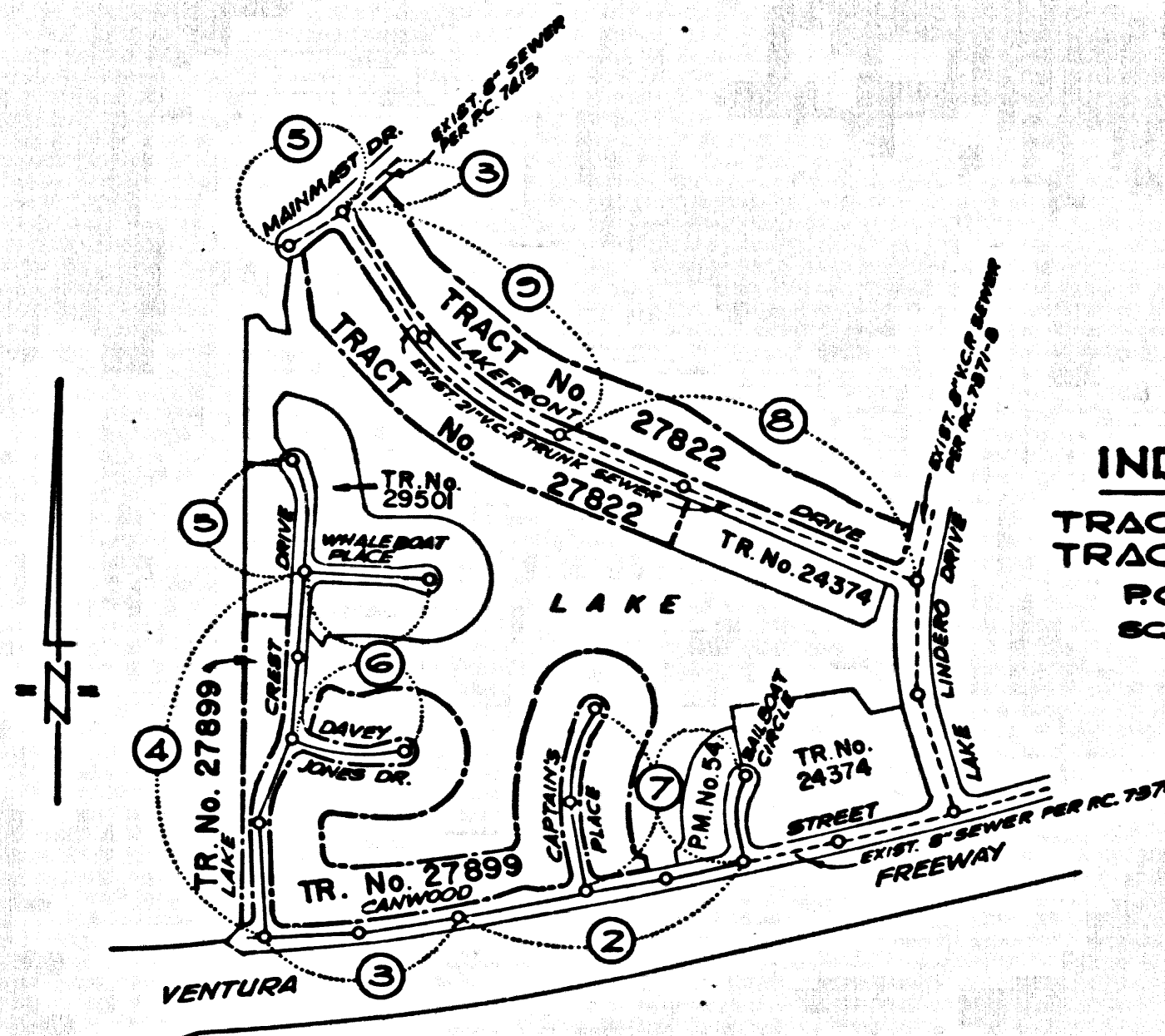


B.M. 575658 ELEV. 260.472
 BR. CAP IN CONC. 6" DN. ON C/L
 VENTURA BLVD. EC 531+82.11
 22.4 MI. W. CORNELL RD.
 MALIBU QUAD. 19 60

NOTE:
 ———— EXISTING CONSTRUCTION ON THESE PLANS SHOWN AS SOLID LINES AND DASH DOT.
 - - - - - PROPOSED CONSTRUCTION, SHOWN DASHED, IS FOR 4" H.L.'s ONLY TO SERVE THE FOLLOWING LOTS:
 TRACT No. 27822
 LOTS 2, 14, 15, 54, 56, 40, 42, 43, 50, 60, 65 & 65.
 TRACT No. 27822
 LOTS 10, 19, 20, 30, 40, 45, 55, 62 & 68.

GENERAL NOTES:
 1. ELEVATIONS ARE IN FEET ABOVE U.S.C. & G.S. SEA LEVEL DATUM OF 1929.
 2. NO REVISIONS SHALL BE MADE IN THESE PLANS WITHOUT THE APPROVAL OF THE COUNTY ENGINEER.
 3. NO REPRESENTATIVE OF THE COUNTY ENGINEER WILL SURVEY OR LAY OUT ANY PORTION OF THE WORK.
 4. GRADES TO WHICH THE IMPROVEMENTS ARE SHOWN ON PLANS AND PROFILES GRADE POINTS FOR TOP OF CURBS, CENTER LINE OF STREETS, OR CENTER LINE OF ALLEYS ARE SHOWN BY CIRCLES ON PROFILES. AT ALL POINTS BETWEEN DESIGNATED POINTS THE GRADE SHALL BE ESTABLISHED SO AS TO CONFORM TO A STRAIGHT LINE DRAWN BETWEEN SAID DESIGNATED POINTS.
 5. THE PRIVATE ENGINEER SHALL FURNISH THE COUNTY ENGINEER WITH GRADE SHEETS AND STATIONING FOR ALL HOUSE LATERALS AND "T" OR "Y" BRANCHES AND SHALL PROVIDE STAKES FOR THEM AT THEIR PROPER LOCATIONS WITH STATIONING PLAINLY MARKED. ALL HOUSE LATERALS SHALL BE CONSTRUCTED IN A STRAIGHT ALIGNMENT AT RIGHT ANGLES FROM THE MAIN LINE SEWER EXCEPT AS SHOWN ON THE PLANS. HOUSE LATERALS FROM CHIMNEYS SHALL NOT HAVE AN ANGLE OF LESS THAN 45° WITH THE MAIN LINE SEWER. ANY CHANGE IN ALIGNMENT SHALL BE REQUESTED IN WRITING BY THE PRIVATE ENGINEER.
 6. THE PRIVATE ENGINEER SHALL FURNISH THE HOUSE LATERAL BUDGET IN WRITING BY THE PRIVATE ENGINEER.
 7. BEFORE WORK CAN BE STARTED, THE CONTRACTOR MUST OBTAIN A PERMIT TO EXCAVATE IN COUNTY STREETS FROM THE L.A. COUNTY ROAD DEPT., DISTRICT OFFICE NO. 2, AND PAY A FEE TO THE COUNTY ENGINEER, ROOM 320, COUNTY ENGINEERING BUILDING, 108 WEST SECOND STREET OR _____ REGIONAL OFFICE, TO COVER THE COST OF CONSTRUCTION INSPECTION AND RECORD PLANS.
 8. IF WORK IS TO BE DONE IN A STATE HIGHWAY, A PERMIT MUST BE OBTAINED FROM THE STATE OF CALIFORNIA, DIVISION OF HIGHWAYS, 120 SOUTH SPRING STREET, LOS ANGELES, CALIFORNIA.
 9. APPROVAL OF THIS PLAN BY THE COUNTY OF LOS ANGELES DOES NOT CONSTITUTE A REPRESENTATION AS TO THE ACCURACY OF THE LOCATION OF OR THE EXISTENCE OR NON-EXISTENCE OF ANY UNDERGROUND UTILITY PIPE, OR STRUCTURE WITHIN THE LIMITS OF THIS PROJECT. THIS NOTE APPLIES TO ALL PAGES.
 10. REFER TO SECTION 7-18.4.1 OF THE STANDARD SPECIFICATIONS, REGARDING SAFETY ORDERS.

PROFILE, ALIGNMENT AND GRADE OF
SANITARY SEWERS PAGE 1
 TO BE CONSTRUCTED IN
TRACT No. 27822 & TRACT No. 27899
PRIVATE CONTRACT NO. 8658
 W.S. 93
 5 SHEETS, 9 PAGES
 SCALE: VERT. 1" = 4' SEPTEMBER, 1971
 HORIZ. 1" = 40'
 PREPARED IN THE OFFICES OF
McINTIRE & QUIROS INC.
 BY: *E.M. Quiros*
 REG. C.E. No. 14297



INDEX MAP
 TRACT No. 27822 & TRACT No. 27899
 RC. No. 8658
 SCALE 1" = 500'

NOTE: NUMBERS IN CIRCLES INDICATE PAGE NUMBER.

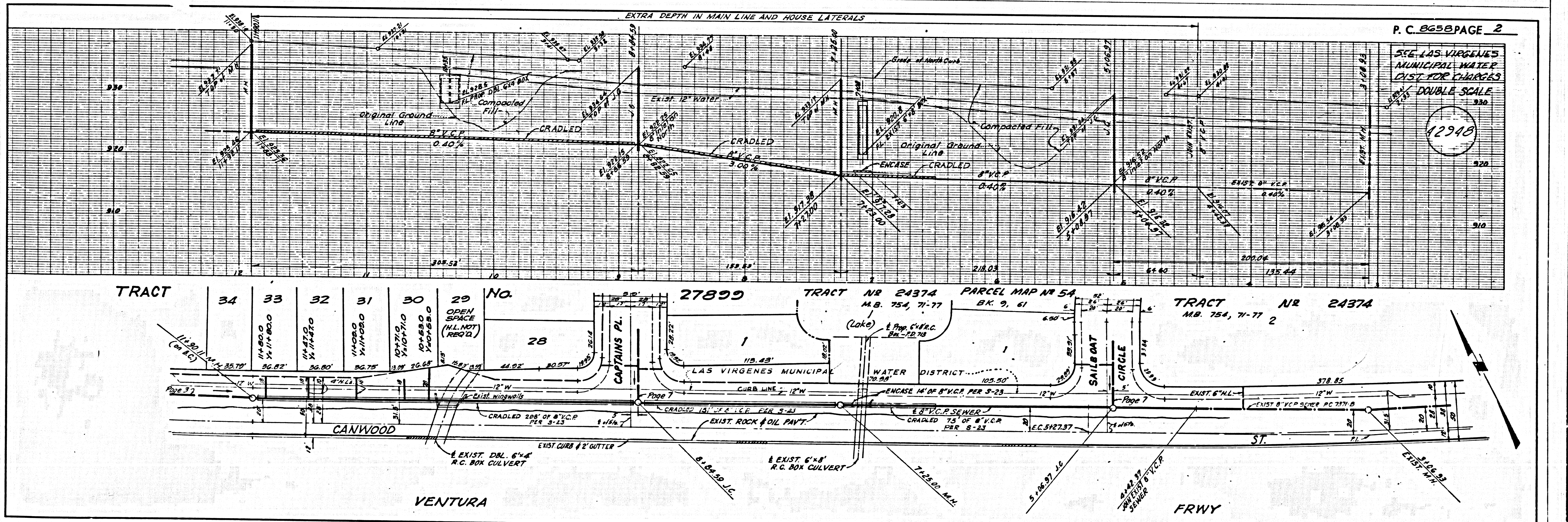
NOTE: CONTRACTOR SHALL VERIFY LOCATIONS OF EXISTING UTILITIES AND SERVICES WITH COMPANIES INDICATED PRIOR TO CONSTRUCTION.

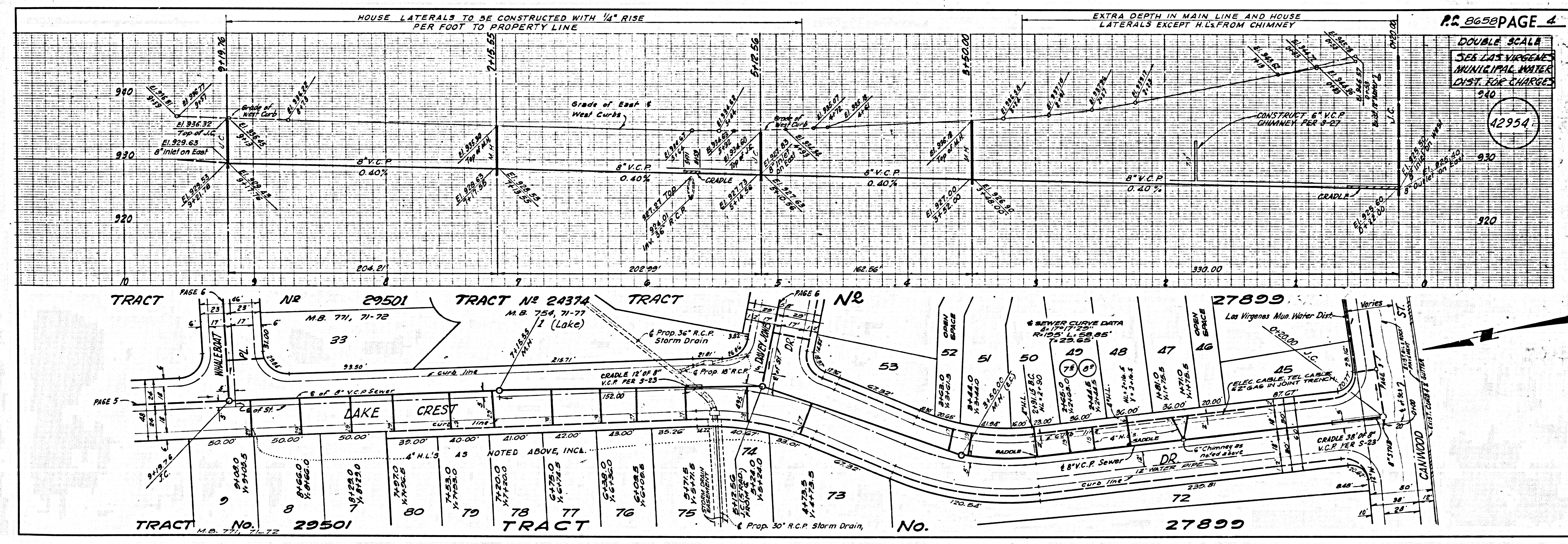
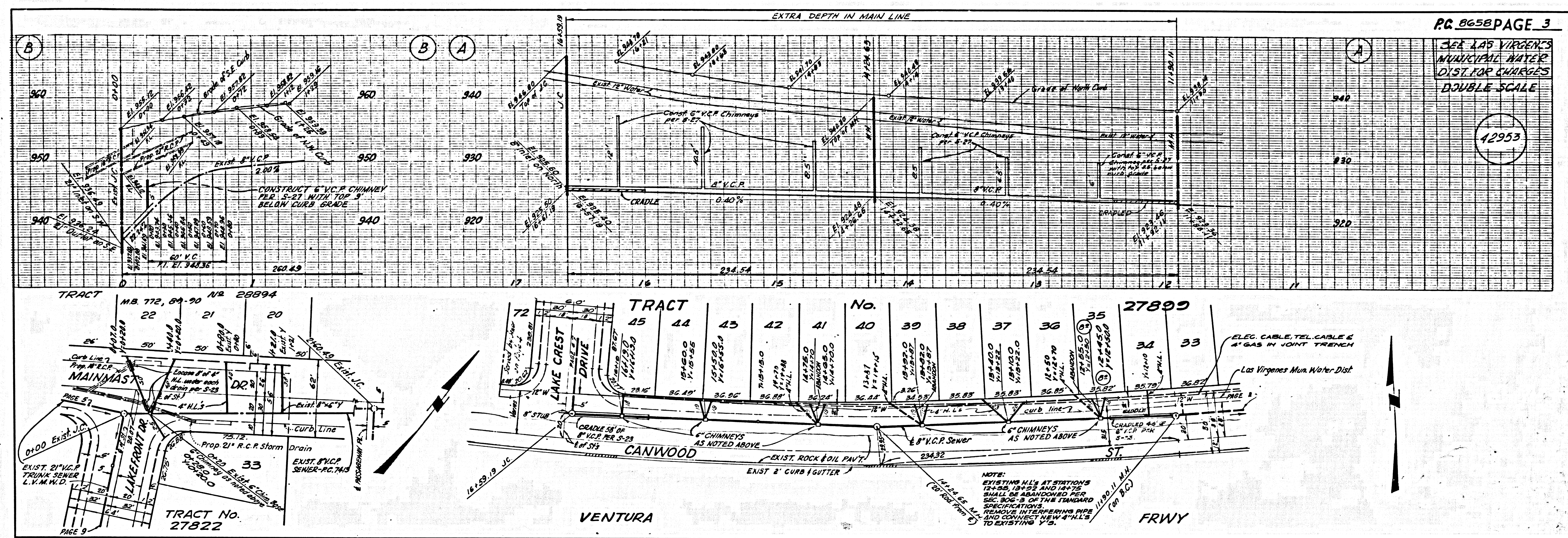
CONSTRUCTION NOTES:
 1. WORK SHALL BE CONSTRUCTED ACCORDING TO THE STANDARD SPECIFICATIONS FOR PUBLIC WORKS CONSTRUCTION 1978 EDITION WITH PERMITS, ENVIRONMENTAL AND COUNTY ENGINEER SPECIAL PROVISIONS FOR THE CONSTRUCTION OF SANITARY SEWERS DATED APRIL 7, 1970, AND SHALL BE PROSECUTED ONLY IN THE PRESENCE OF THE COUNTY ENGINEER.
 2. THE CONTRACTOR SHALL NOTIFY THE CONSTRUCTION DIVISION BY TELEPHONE, MAINPHONE 9-4247, EXT. 8153, AT LEAST TWENTY-FOUR HOURS BEFORE STARTING ANY WORK UNDER THIS CONTRACT.
 3. HOUSE LATERALS TO BE CONSTRUCTED WITH INVERTS AT PROPERTY LINE & FEET BELOW CURB GRADE EXCEPT AS NOTED.
 4. WYE OR TEE BRANCHES MAY BE USED FOR CONNECTIONS TO MAINLINE SEWERS EXCEPT AS NOTED.
 5. ALL STRUCTURES SHALL BE EITHER BRICK MANHOLES PER S-23 OR PRECAST CONCRETE MANHOLES PER S-24, EXCEPT AS NOTED.
 6. PROVIDE STAKES ON THE PROPERTY LINE OR PROPERTY LINES PRODUCED AT RIGHT ANGLES TO THE SEWER LINE AT THE CENTER LINE OF EACH MANHOLE.
 7. MANHOLE TOPS IN UNIMPROVED RIGHTS OF WAY TO BE SIX INCHES ABOVE FINISHED GRADE.
 8. VITRIFIED CLAY PIPE JOINTS SHALL BE TYPE "D", "F", OR "G" PER STANDARD SPECIFICATIONS SECTION 308-2.
 9. IF A COVER IS REQUIRED WITHIN THREE FEET OF THE SEWER, THE SEWER SHALL BE ENCASED, PER S-23, CASE II, TWO FEET ON EACH SIDE FROM THE POINT OF INTERFERENCE.
 10. IF DURING THE COURSE OF CONSTRUCTION IT IS DETERMINED THAT THERE IS LESS THAN FOUR FEET OF COVER OVER THE TOP OF A MAIN LINE OR HOUSE LATERAL V.C.P. SEWER WHICH IS NOT INDICATED ON THE PLANS, THE PIPE SHALL BE ENCASED PER S-23, CASE II UNLESS OTHERWISE APPROVED BY THE COUNTY ENGINEER.
 11. ALL JOINTS BETWEEN CAST IRON PIPE AND VITRIFIED CLAY PIPE SHALL BE MADE WITH A RUBBER SLEEVE JOINT, TYPE "C" OR "D", (WITH BUSHING) IF NECESSARY PER STANDARD SPECIFICATIONS, SECTION 308-2.
 12. SEWERS 12" OR LARGER FOR LEASAGE PER SECTION 308-2.2 OF THE STANDARD SPECIFICATIONS AND SPECIAL PROVISIONS.
 13. RESURFACE ALL TRENCHES WITHIN PAVED AREAS TO MEET L.A. COUNTY ROAD DEPT. OR CALIFORNIA STATE HIGHWAY REQUIREMENTS IN ACCORDANCE WITH PERMITS.
UTILITY COMPANIES
 SOUL CALIF EDISON CO. } IN JOINT TRENCH
 GAS CO. }
 PACIFIC TELEPHONE }
 LAS VIRGENES MUN. WATER DIST.

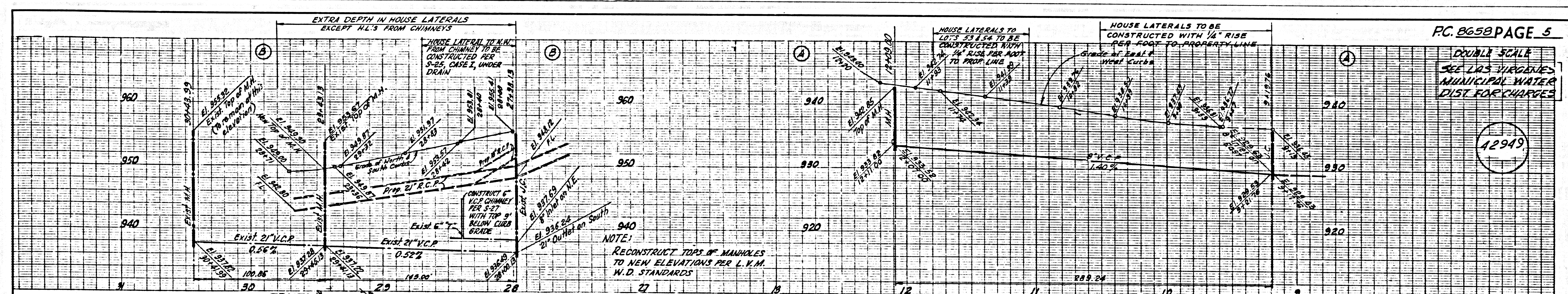
THE FOLLOWING LATEST REVISED STANDARD PLANS ON FILE IN THE OFFICE OF THE COUNTY ENGINEER SHALL APPLY IN THE CONSTRUCTION OF THIS PROJECT:

MINIMUM PUBLIC SAFETY REQUIREMENTS	S-1
BRICK MANHOLE	S-2
STANDARD MANHOLE STEP	S-17
BEARING FOR SEWER PIPE	S-21
CRADLING AND ENCASEMENT	S-23
WYE OR TEE SUPPORT	S-26
ALLOWABLE TRENCH WIDTHS	S-28
LOCKING MANHOLE FRAME AND COVER	S-29
NON-REINFORCED PRECAST CONCRETE MANHOLE	S-36

COUNTY OF LOS ANGELES, CALIFORNIA
 JOHN A. LAMBIE, COUNTY ENGINEER
 LAS VIRGENES MUNICIPAL WATER DISTRICT
 APPROVED *John H. Mueler* 9/27/71 REGIONAL ENGINEER (DATE)
 APPROVED *John W. Stiles* GENERAL MANAGER - CHIEF ENGINEER (DATE)
 CHECKED *John H. Mueler* 9/27/71 (DATE)
 REG. C.E. No. 11086
 CALABASAS BLDG. DIST. 21 I.N. 0250.02

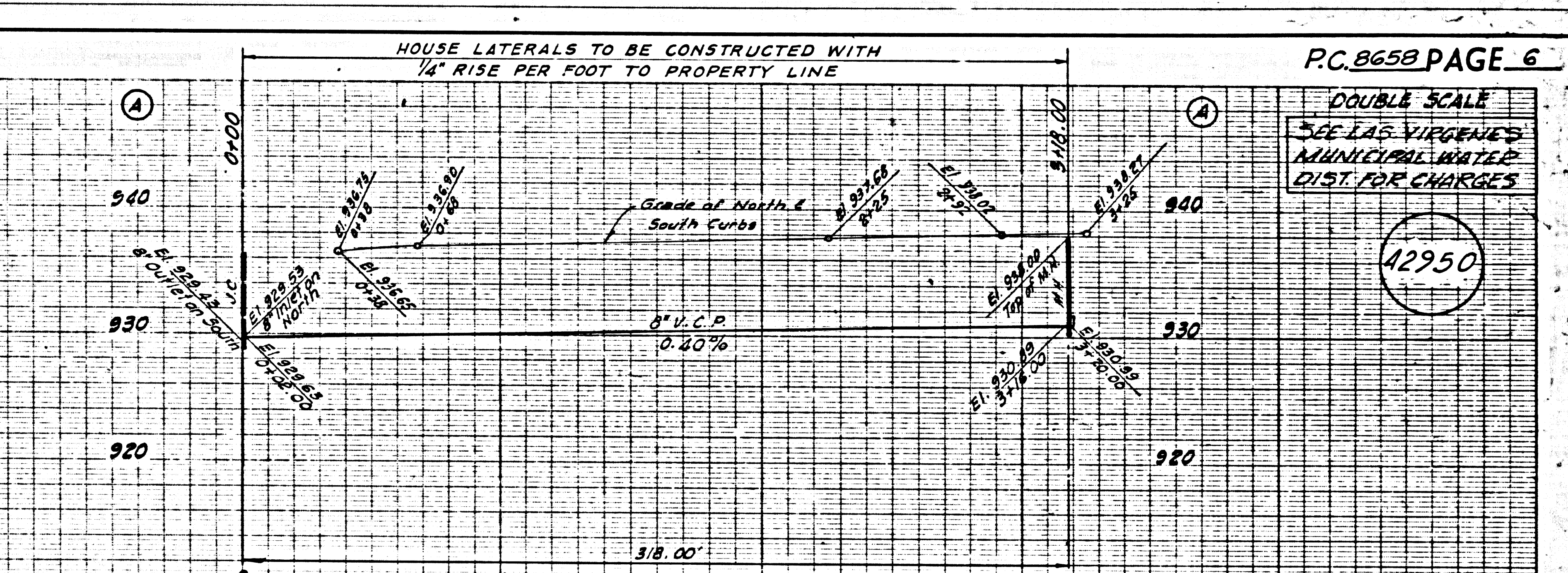
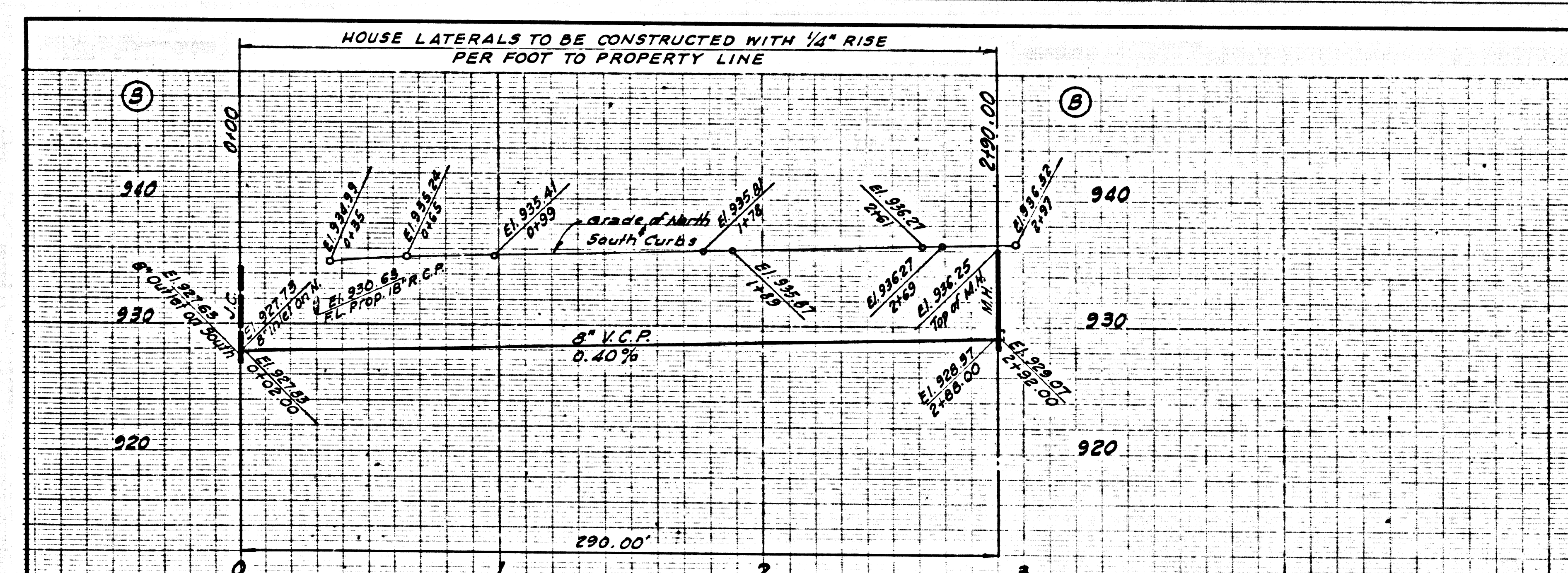
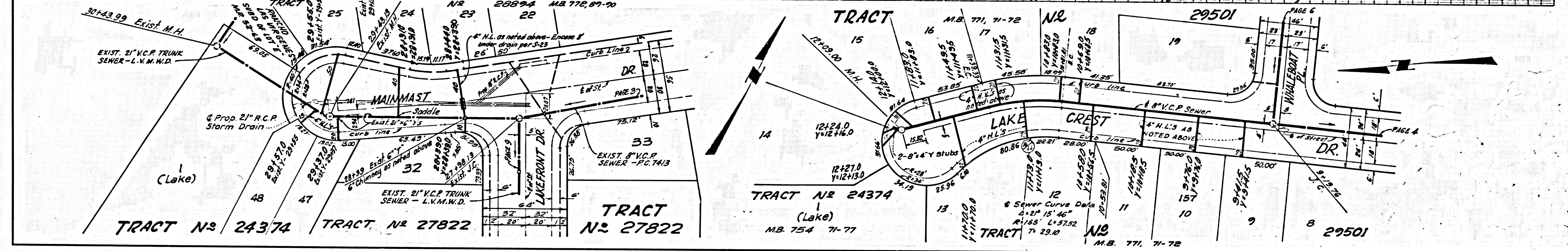






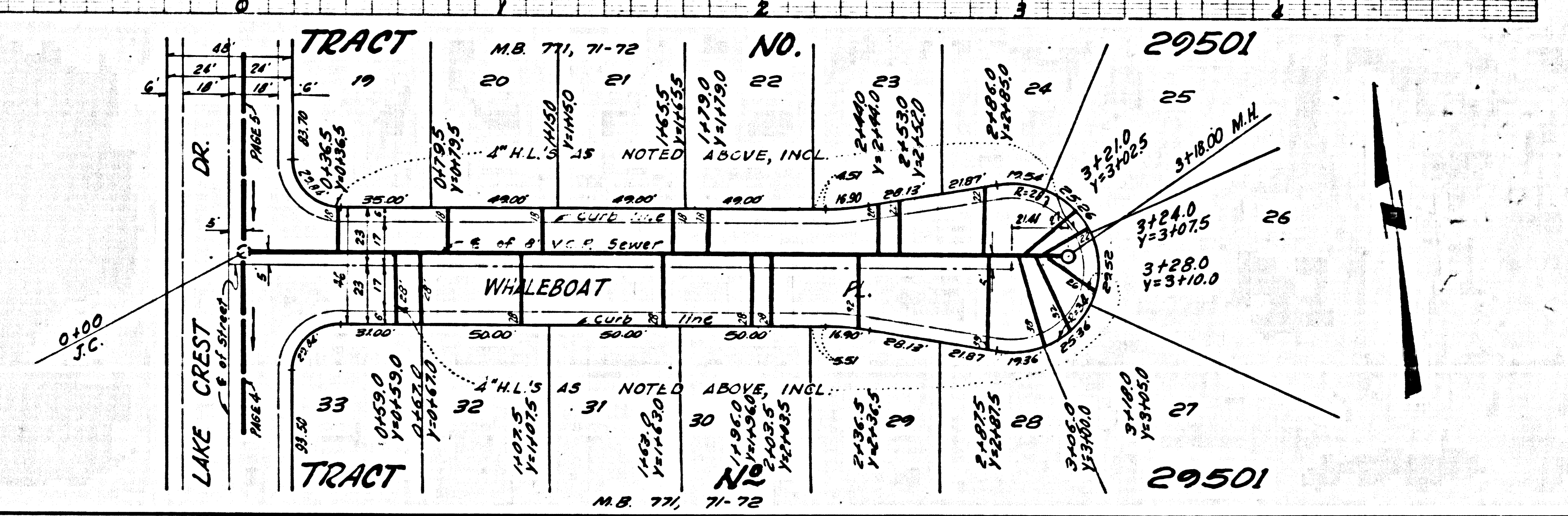
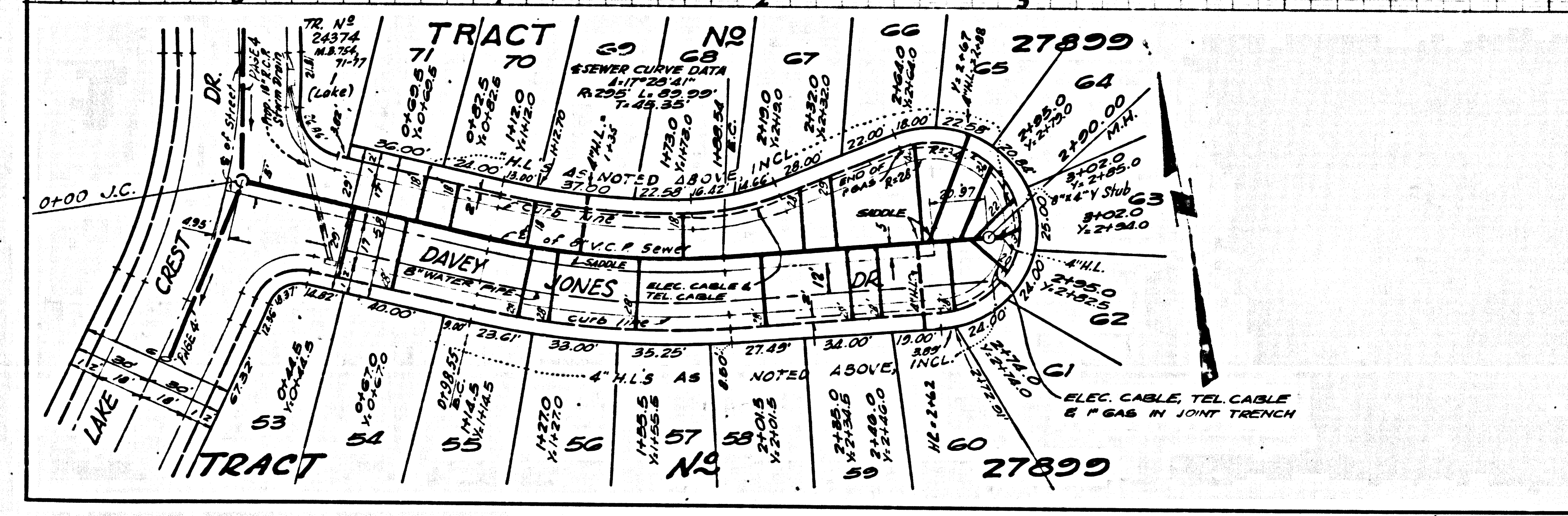
PC. 8658 PAGE 5
 DOUBLE SCALE
 SEE LAS VIRGENES MUNICIPAL WATER DIST. FOR CHARGES

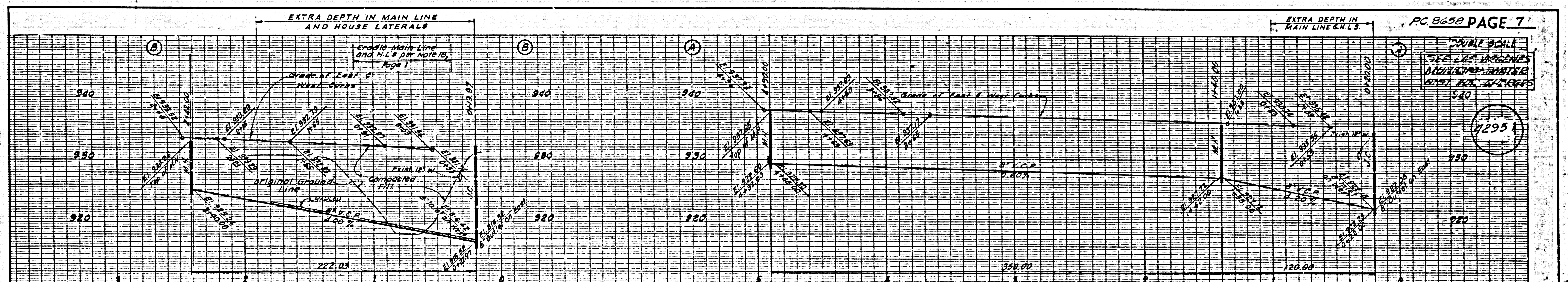
12949



PC. 8658 PAGE 6
 DOUBLE SCALE
 SEE LAS VIRGENES MUNICIPAL WATER DIST. FOR CHARGES

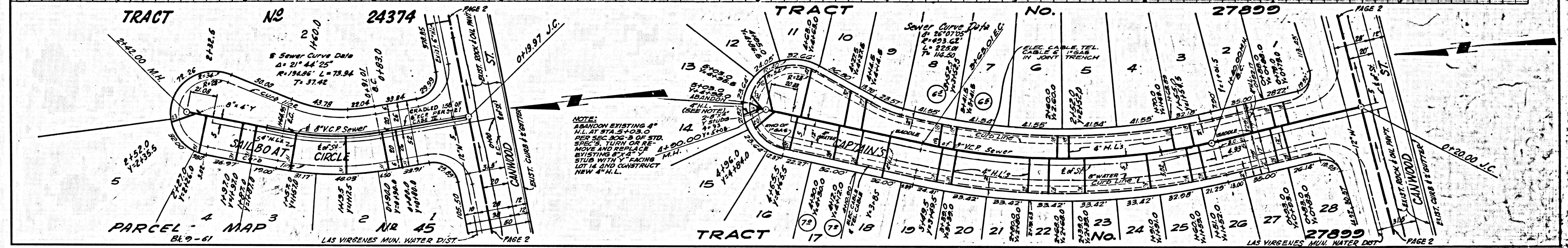
12950





PC 8658 PAGE 7

DOUBLE SCALE
SEE L.A. SPECIFICATIONS
FOR MANHOLES
EXIST. FOR CHIMNEYS

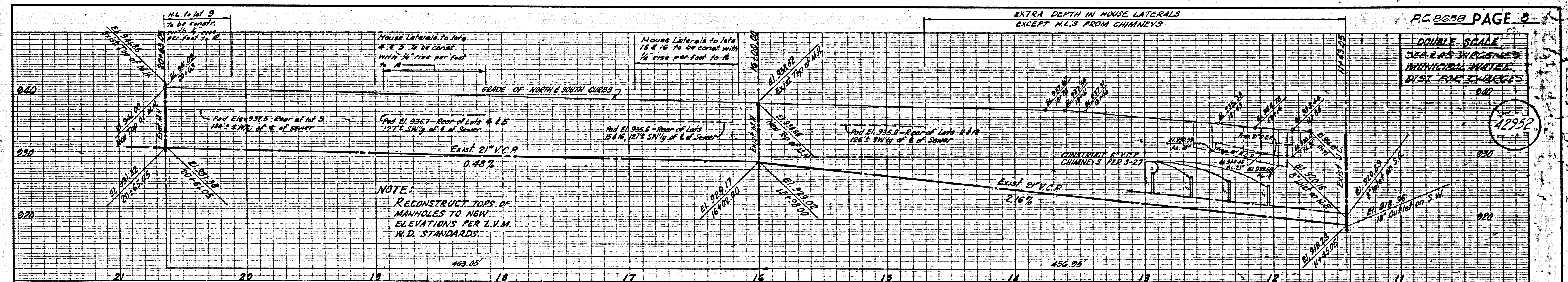


TRACT NO. 24374

TRACT NO. 27899

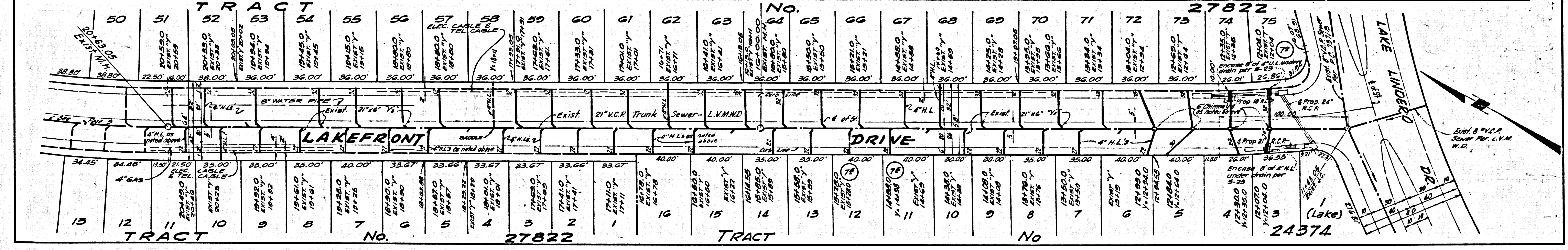
PARCEL MAP BL 9-61

LAS VIRGENES MUNI. WATER DIST



PC 8658 PAGE 8

DOUBLE SCALE
SEE L.A. SPECIFICATIONS
FOR MANHOLES
EXIST. FOR CHIMNEYS

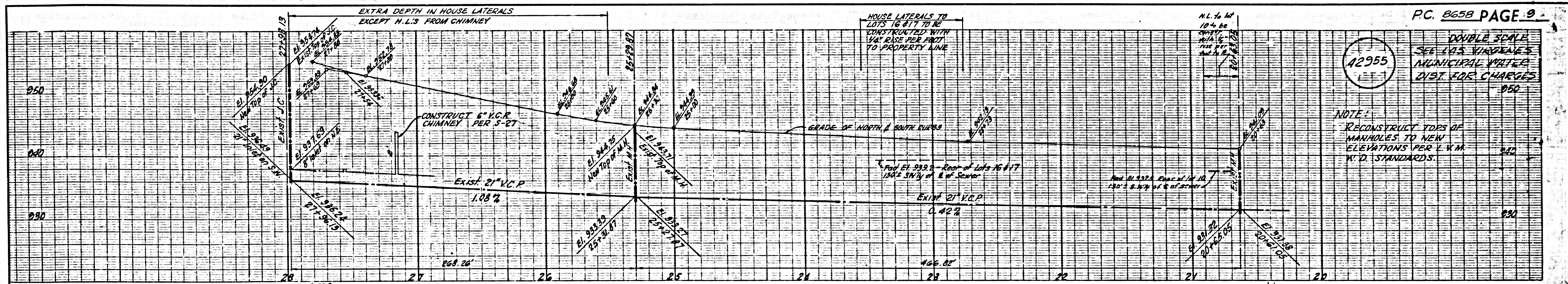


TRACT NO. 27822

TRACT NO. 24374

TRACT NO.

TRACT NO.



PC. 8658 PAGE 9

DOUBLE SCALE
SEE L.S. VIGNETTES
MUNICIPAL WATER
DIST. FEE CHARGES
050

NOTE:
RECONSTRUCT TOPS OF
MANHOLES TO NEW
ELEVATIONS PER L.C.M.
W.D. STANDARDS.

