

B.M. B.L. 2956 ELEV. 1435.88
 RDBM Tag W. Ca. Sierra Hwy. B.S.F.A.S.
 BCR 30 FT. W. & W. Rdwy. 145 FT. S.
 E. Soledad Canyon Rd.
 NEWHALL QUAD. 1965

NEWHALL BLDG. DIST. NO. 8.2

PROFILE ALIGNMENT AND GRADE OF P.C. 8659
SANITARY SEWERS PAGE 1

CONSTRUCTED IN
 R/W WEST OF
 SIERRA HIGHWAY

PRIVATE CONTRACT NO. 8659

W.S.62

1 SHEET 2 PAGES

SCALE: VERT. 1" = 4'
 HORIZ. 1" = 40'

NOVEMBER, 1971

PREPARED IN THE OFFICES OF

ANDEL ENGINEERING COMPANY

By: *E. J. Balderson*
 E. J. Balderson, Jr. REG. C. E. NO. 10233

FOR LEGEND SEE PLAN NO. S-1

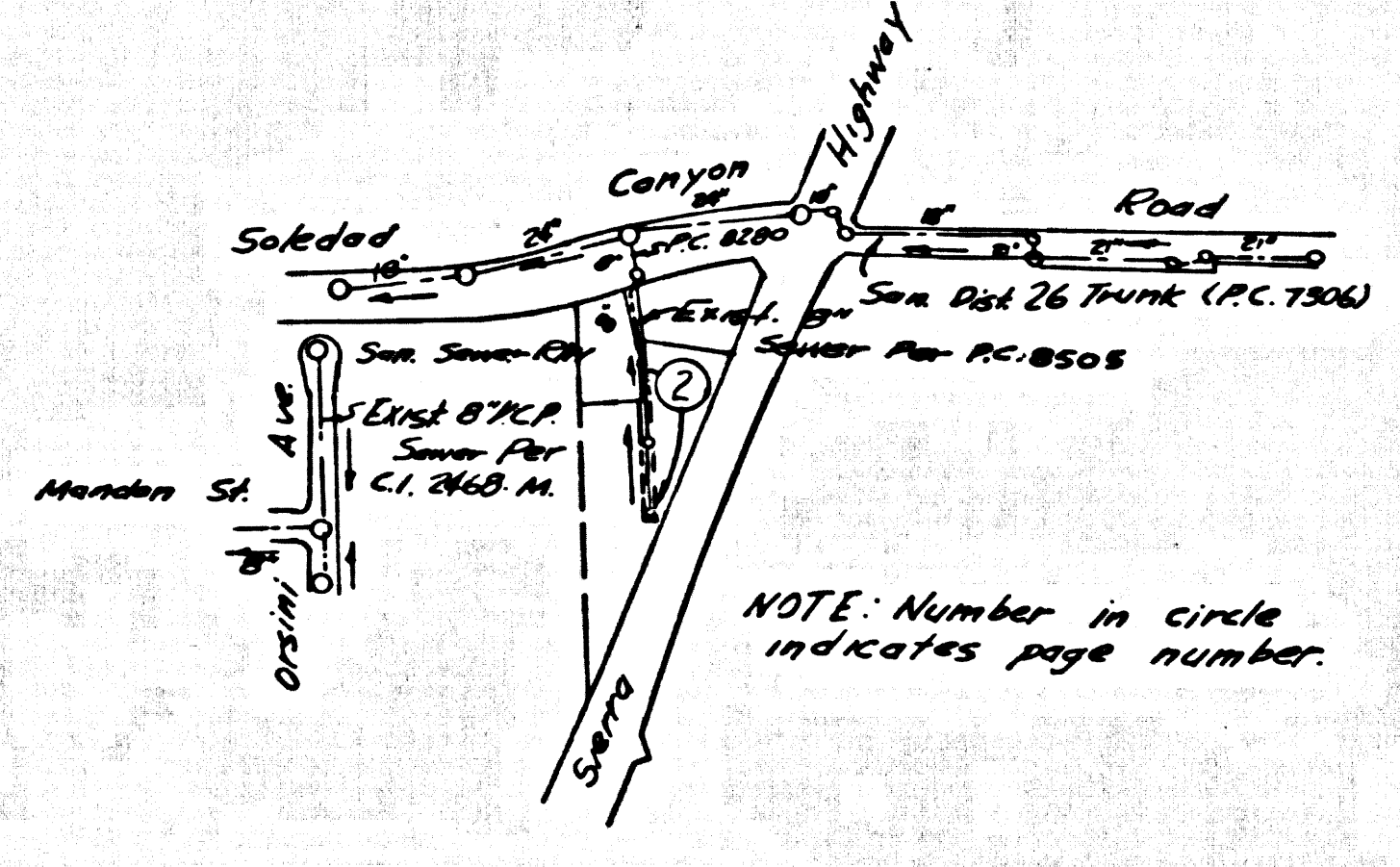
NOTE: THE DESIGN AND THE DATA HEREON ARE HEREBY MADE A PART OF THE SPECIFICATIONS. GRADES TO WHICH THIS IMPROVEMENT IS TO BE CONSTRUCTED ARE SHOWN ON PLANS AND PROFILES. GRADE POINTS FOR TOP OF CURBS, CENTER LINE OF STREETS, OR CENTER LINE OF ALLEYS ARE SHOWN BY CIRCLES ON PROFILES. AT ALL POINTS BETWEEN DESIGNATED POINTS THE GRADE SHALL BE ESTABLISHED SO AS TO CONFORM TO A STRAIGHT LINE DRAWN BETWEEN SAID DESIGNATED POINTS. REVISIONS ARE IN RED EXCEPT U.S.C. & G.S. WORK SHALL BE CONSTRUCTED ACCORDING TO STANDARD SPECIFICATIONS OF PUBLIC WORKS CONSTRUCTION (1970 EDITION WITH ITS SUPPLEMENTS) AND QUALITY ASSURANCE SPECIAL PROVISIONS FOR THE CONSTRUCTION OF SANITARY SEWERAGE DATED APRIL 2, 1970 AND SHALL BE PROSECUTED EXACTLY IN THE PROCEDURE OF THE COUNTY ENGINEER. BEFORE WORK CAN BE STARTED, THE CONTRACTOR MUST OBTAIN A PERMIT TO EXCAVATE IN COUNTY STREETS FROM THE L.A. COUNTY INFRASTRUCTURE DIVISION, DIVISION OF PUBLIC WORKS, 1100 N. GARDEN ST., LOS ANGELES, CALIFORNIA 90012. BEFORE WORK CAN BE STARTED, THE CONTRACTOR MUST OBTAIN A PERMIT TO EXCAVATE IN COUNTY STREETS FROM THE L.A. COUNTY INFRASTRUCTURE DIVISION, DIVISION OF PUBLIC WORKS, 1100 N. GARDEN ST., LOS ANGELES, CALIFORNIA 90012. APPROVAL OF THIS PLAN BY THE COUNTY OF LOS ANGELES DOES NOT CONSTITUTE A REPRESENTATION AS TO THE ACCURACY OF THE PROJECT. THIS NOTE APPLIES TO ALL PAGES. IF WORK IS TO BE DONE IN A STATE HIGHWAY, A PERMIT MUST BE OBTAINED FROM THE STATE OF CALIFORNIA, DIVISION OF HIGHWAYS, 120 SOUTH SPRING STREET, LOS ANGELES, CALIFORNIA.

- THE FOLLOWING LATEST REVISED STANDARD PLANS ON FILE IN THE OFFICE OF THE COUNTY ENGINEER SHALL APPLY IN THE CONSTRUCTION OF THIS PROJECT:
- LEGEND
 - MINIMUM PUBLIC SAFETY REQUIREMENTS S-1
 - BRICK MANHOLE S-5
 - MAN-REINFORCED PRECAST CONCRETE MANHOLE S-5A
 - MANHOLE FRAME AND COVER S-5B
 - STANDARD MANHOLE STEP S-5C
 - SECTIONS FOR OTHER STEPS S-5D
 - CRADLING AND EMBANKMENT S-5E
 - PIPE OF THE SURFACE S-5F
 - ALLOWABLE TRENCH WIDTHS S-5G
 - RECONSTRUCTION OF BRICK M.H. TOPS S-5H

No connections for the disposal of industrial wastes shall be made to sewers shown on these drawings without written permission from the Chief Engineer and General Manager of the County Sanitation Districts.

County Sanitation Districts shall be notified prior to the following so that required inspection can be made (Phone 337-1025 - 400-1164)

Acceptance of the project.



INDEX MAP
 P.C. 8659
 R/W WEST OF
 SIERRA HIGHWAY

- NOTES:
- PROVIDE STAKES ON THE PROPERTY LINE OR PROPERTY LINES PRODUCED AT RIGHT ANGLES TO THE SEWER LINE AT THE CENTER LINE OF EACH MANHOLE.
 - NO REPRESENTATIVE OF THE COUNTY ENGINEER WILL SURVEY OR LAY OUT ANY PORTION OF THE WORK.
 - THE PRIVATE ENGINEER SHALL FURNISH THE COUNTY ENGINEER WITH GRADE SHEETS AND STATIONING FOR ALL 1"=40" BRANCHES AND SHALL PROVIDE STAKES FOR THEM AT THEIR PROPER LOCATIONS WITH STATIONING PLAINLY MARKED.
 - ANY CHANGE IN ALIGNMENT SHALL BE REQUESTED IN WRITING BY THE PRIVATE ENGINEER.
 - NO REVISIONS SHALL BE MADE IN THESE PLANS WITHOUT THE APPROVAL OF THE COUNTY ENGINEER.
 - THE CONTRACTOR SHALL NOTIFY THE CONSTRUCTION DIVISION BY TELEPHONE, MADISON 9-4877, AT LEAST TWENTY-FOUR HOURS BEFORE STARTING ANY WORK UNDER THIS CONTRACT.
 - MANHOLES SHALL BE BRICK SEWER STRUCTURES PER S-5, OR PRECAST CONCRETE MANHOLE PER S-5A.
 - PIPE OF THE SEWER STRUCTURES MAY BE USED FOR CONNECTIONS TO MANHOLE SEWERS EXCEPT AS NOTED.
 - MANHOLE TOPS IN UNIMPROVED RIGHTS-OF-WAY TO BE SIX INCHES ABOVE FINISHING GRADE.
 - USE EXTRA STRENGTH PIPE, ALL PIPE IS STANDARD DEPTH EXCEPT AS NOTED.
 - VERIFIED CLAY PIPE JOINTS SHALL BE TYPE "D", "E", OR "F" PER STANDARD SPECIFICATIONS SECTION 808-2.
 - IF A POWER POLE IS WITHIN THREE FEET OF THE SEWER, THE SEWER SHALL BE ENCASED, PER S-5B, TWO FEET ON EACH SIDE FROM THE POINT OF INTERFERENCE.
 - IF DURING THE COURSE OF CONSTRUCTION IT IS DETERMINED THAT THERE IS LESS THAN FOUR FEET OF COVER OVER THE TOP OF A MAIN LINE OR HOUSE LATERAL V.C.P. SEWER WHICH IS NOT INDICATED ON THE PLANS, THE PIPE SHALL BE ENCASED PER S-5C, UNLESS OTHERWISE APPROVED BY THE COUNTY ENGINEER.
 - RESURFACE ALL TRENCHES WITH FINISH GRADE TO MEET L.A. COUNTY ROAD DEPT. OR CALIFORNIA STATE HIGHWAY REQUIREMENTS IN ACCORDANCE WITH PERMITS.
 - REFER TO SECTION 7-10-6.1 OF THE STANDARD SPECIFICATIONS REGARDING SAFETY ORDRER.
 - ALL JOINTS BETWEEN CAST IRON PIPE AND VERIFIED CLAY PIPE SHALL BE MADE WITH A RUBBER SLIP-ON JOINT TYPE "C" OR "D" WITH FLASHING IF NECESSARY PER STANDARD SPECIFICATIONS, SECTION 808-2.
 - SPECIAL BACKFILL IN DESIGNATED AREAS:
 - BACKFILL TRENCH AND REPLACE OTHER EARTH REMOVED SO AS TO ACHIEVE THE EXISTING GRADES AS SHOWN ON THE SEWER PLAN.
 - ALL BACKFILL AND EARTH REPLACED SHALL BE COMPACTED TO A MINIMUM OF 90% OF MAXIMUM DENSITY PER ASTM STANDARD METHOD OF TEST D698-57T AS MODIFIED. ACCEPTABLE CERTIFICATION OF SUCH COMPACTION SHALL BE SUBMITTED TO THE CONSTRUCTION DIVISION.

NOTICE TO CONTRACTOR
 The existence and location of any underground utility lines or structures shown on these plans are obtained by a search of the available records. To the best of my knowledge there are no existing utilities except as shown on these plans. The contractor is required to take due precautionary measures to protect the utility lines shown and any other lines not shown or not shown on these plans.

E. J. Balderson
 E. J. Balderson, Jr. REG. C. E. NO. 10233

COLLECT CHARGES AS INDICATED

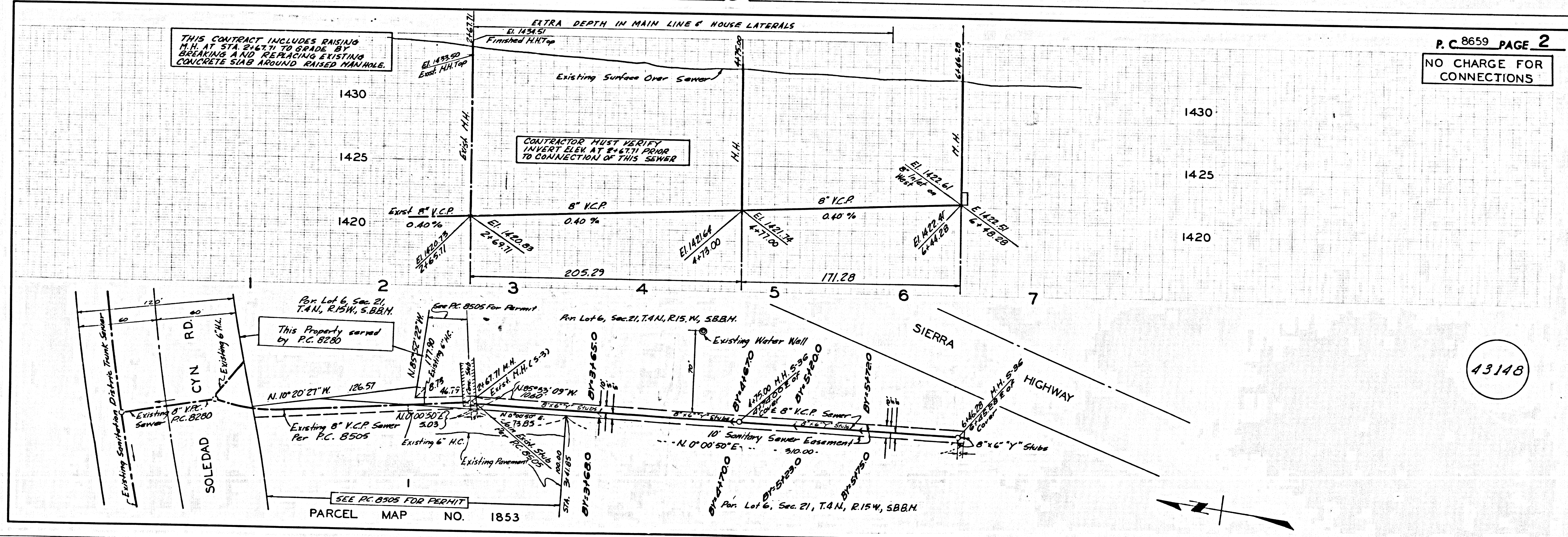
COUNTY OF LOS ANGELES, CALIFORNIA
 HARVEY T. BRANDT, COUNTY ENGINEER
 APPROVED BY: *Harvey T. Brandt*
 REGIONAL ENGINEER

J. D. PARKHURST, CHIEF ENGINEER
 CO. SAN. DIST. NO. 26
 APPROVED BY: *J. D. Parkhurst*
 OFFICE ENGINEER

CHECKED BY: *Rodriguez* 1-12-72
 REG. C. E. NO. 22502

43147

J.N. 037117



THIS CONTRACT INCLUDES RAISING M.H. AT STA. #46711 TO GRADE BY BREAKING AND REFRACING EXISTING CONCRETE SLAB AROUND RAISED MANHOLE.

CONTRACTOR MUST VERIFY INVERT ELEV AT #46711 PRIOR TO CONNECTION OF THIS SEWER

P.C. 8659 PAGE 2
NO CHARGE FOR CONNECTIONS

43148