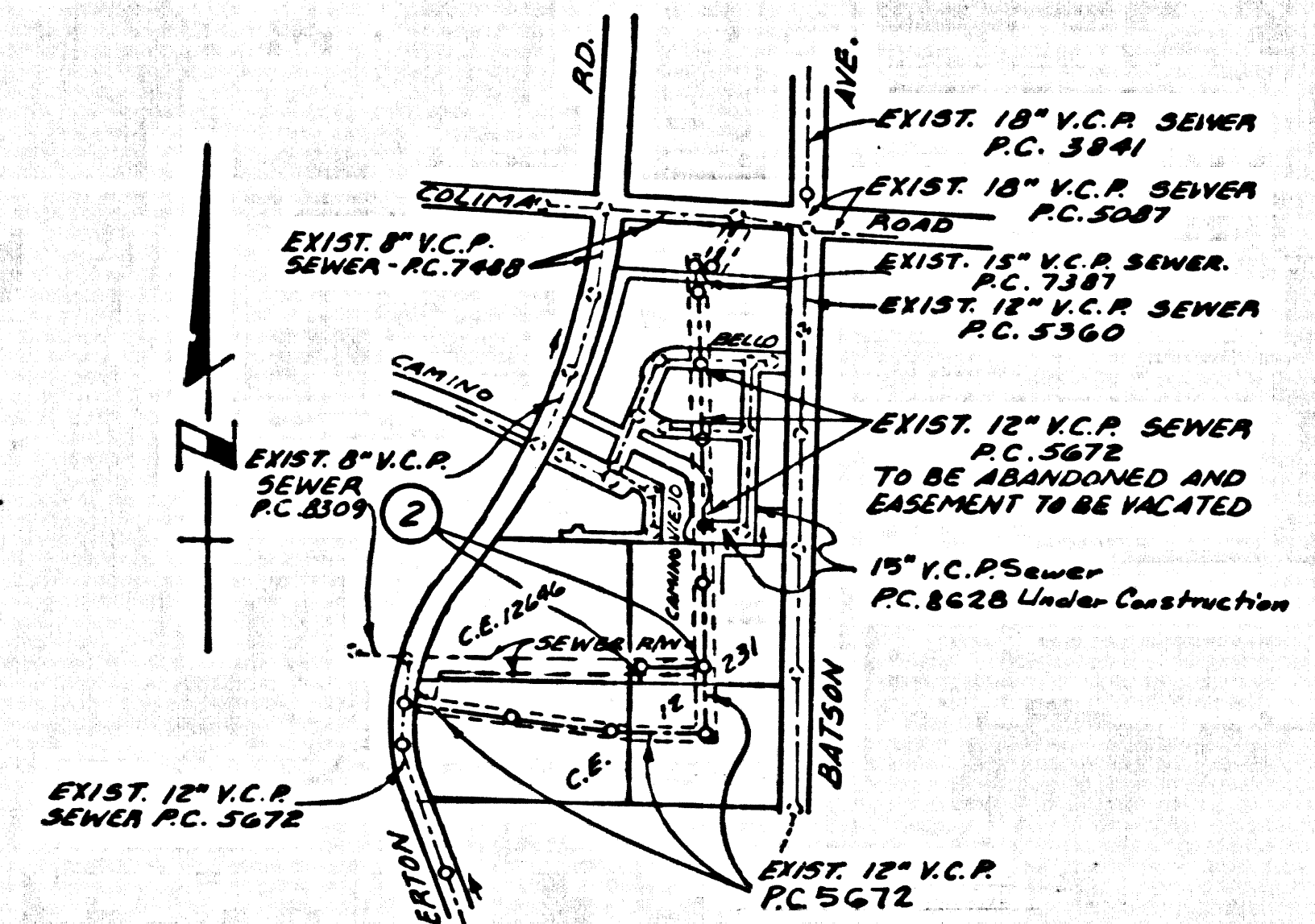


B.M. 86 2617 ELEV. 462.706
 R. D. B. M. TAG IN N. C.B. SERVICE ISLAND ON
 N.E. COR. 5TH AVE. & BATSON AVE., 55' N. &
 35' E. OF E. INTERSECTION
 OTTERBEIN QUAD. 19 TO ADJ.



PC. 8661
INDEX MAP
 SCALE: 1"=600'

THE FOLLOWING LATEST REVISED STANDARD PLANS ON FILE IN THE OFFICE OF THE COUNTY ENGINEER SHALL APPLY IN THE CONSTRUCTION OF THIS PROJECT.

LEGEND	
MINIMUM PUBLIC SAFETY REQUIREMENTS	3-1
BRICK MANHOLE	3-2
STANDARD MANHOLE STEP	3-7
BEDDING FOR SEWER PIPE	3-21
CRADLING AND ENCASUREMENT	3-23
WYE OR TEE SUPPORT	3-24
ALLOWABLE TRENCH WIDTHS	3-33
LOCKING MANHOLE FRAME AND COVER	3-35
NON-REINFORCED PRECAST CONCRETE MANHOLE	3-36

No connections for the disposal of industrial wastes shall be made to sewer lines on these drawings without written permission from the Chief Engineer and General Manager of the County Sanitation Districts.

County Sanitation Districts shall be notified prior to the following so that required inspection can be made (Phone 337-1025 - 433444).

Acceptance of the project.

DOUBLE SCALE
LA PUENTE BLDG. DIST. NO. 2.0

GENERAL NOTES:

- PROVIDE STAKES ON THE PROPERTY LINE OR PROPERTY LINES PRODUCED AT RIGHT ANGLES TO THE SEWER LINE AT THE CENTER LINE OF EACH MANHOLE.
- NO REPRESENTATIVE OF THE COUNTY ENGINEER WILL SURVEY OR LAY OUT ANY PORTION OF THE WORK.
- THE PRIVATE ENGINEER SHALL FURNISH THE COUNTY ENGINEER WITH GRADE SHEETS AND STATIONING FOR ALL HOUSE LATERALS AND "T" OR "Y" BRANCHES AND SHALL PROVIDE STAKES FOR THEM AT THEIR PROPER LOCATIONS WITH STATIONING PLAINLY MARKED.
- ALL HOUSE LATERALS SHALL BE CONSTRUCTED IN A STRAIGHT ALIGNMENT AT RIGHT ANGLES FROM THE MAIN LINE SEWER EXCEPT AS SHOWN ON THE PLANS. HOUSE LATERALS FROM CHIMNEYS SHALL NOT HAVE AN ANGLE OF LESS THAN 45° WITH THE MAIN LINE SEWER. ANY CHANGE IN ALIGNMENT SHALL BE REQUESTED IN WRITING BY THE PRIVATE ENGINEER.
- THE PRIVATE ENGINEER SHALL FURNISH THE HOUSE LATERAL DEPTH AT THE PROPERTY LINE BELOW THE TOP OF CURB ELEVATION FOR EACH HOUSE LATERAL ON THE GRADE SHEET.
- NO REVISIONS SHALL BE MADE IN THESE PLANS WITHOUT THE APPROVAL OF THE COUNTY ENGINEER.
- THE CONTRACTOR SHALL NOTIFY THE CONSTRUCTION DIVISION BY TELEPHONE, MADISON 9-07, EXT. 8150, AT LEAST TWENTY-FOUR HOURS BEFORE STATING ANY WORK UNDER THIS CONTRACT.
- ALL STRUCTURES SHALL BE EITHER BRICK MANHOLES PER 3-2 OR PRECAST CONCRETE MANHOLES PER 3-36, EXCEPT AS NOTED.
- WYE OR TEE BRANCHES MAY BE USED FOR CONNECTIONS TO MAINLINE SEWER EXCEPT AS NOTED.
- MANHOLE TOPS IN UNIMPROVED RIGHTS-OF-WAY TO BE SIX INCHES ABOVE FINISHED GRADE.
- VICTORISED CLAY PIPE JOINTS SHALL BE TYPE "D" OR "E" PER STANDARD SPECIFICATION SECTION 158.
- CONNECTIONS BETWEEN CAST IRON PIPE AND VICTORISED CLAY PIPE SHALL BE MADE WITH A RUBBER JOINTING TYPE "T" WITH BEARING OF NOT LESS THAN STANDARD SPECIFICATION SECTION 228.2. ON EACH SIDE FROM THE POINT OF INTERFERENCE.
- IF A POWER POLE IS WITHIN THREE FEET OF THE SEWER, THE SEWER SHALL BE ENCASED PER 3-23, LATERALS 1700' AND 1700'.
- IF DURING THE COURSE OF CONSTRUCTION IT IS DETERMINED THAT THERE IS LESS THAN FOUR FEET OF COVER OVER THE TOP OF A MAIN LINE OR HOUSE LATERAL V.C.P. SEWER WHICH IS NOT INDICATED ON THE PLANS, THE PIPE SHALL BE ENCASED PER 3-23, UNLESS OTHERWISE APPROVED BY THE COUNTY ENGINEER.
- HOUSE LATERALS TO BE CONSTRUCTED WITH INVERTS AT PROPERTY LINE 4 FEET BELOW CURB GRADE EXCEPT AS NOTED.
- RESURFACE ALL TRENCHES WITHIN PAVED AREAS TO MEET L.A. COUNTY ROAD DEPT. OR CALIFORNIA STATE HIGHWAY REQUIREMENTS IN ACCORDANCE WITH PERMITS.
- SEWERS TO BE TESTED FOR LEAKAGE PER SECTION 304.33 UNIFORM STANDARD SPECIFICATIONS AND SPECIAL PROVISIONS.
- REFER TO SECTION 210.4.1 OF THE STANDARD SPECIFICATIONS REGARDING SAFETY PROGRAMS.
- SPECIAL BACKFILL IN DESIGNATED AREAS:
 - BACKFILL TRENCH AND REPLACE OTHER EARTH REMOVED SO AS TO ACHIEVE THE NATURAL OR FINISHED GRADES AND SLOPES SHOWN ON THE GRADING PLAN APPROVED FOR THIS TRACT BY THE BUILDING AND SAFETY DIVISION.
 - ALL BACKFILL AND EARTH REPLACES SHALL BE COMPACTED TO A MINIMUM OF 90% OF MAXIMUM DENSITY PER A.S.T.M. STANDARD METHOD OF TEST D959 BY MOISTURE ACCEPTABLE CERTIFICATION OF SUCH COMPACTION SHALL BE SUBMITTED TO THE CONSTRUCTION DIVISION. ALL WORK SHALL BE DONE UNDER SUPERVISION OF A REGISTERED PROFESSIONAL ENGINEER.
 - FULL COMPLIANCE WITH SECTION 158 OF THE STANDARD SPECIFICATIONS AND THE SPECIAL PROVISIONS WILL BE REQUIRED FOR BACKFILL IN DESIGNATED AREAS. BACKFILL COMPACTION AND SAND EQUIVALENT TESTING SHALL BE MANAGED BY LICENSED PROFESSIONAL ENGINEERS. TESTING CERTIFICATE OF SATISFACTORY ACCEPTANCE BY LICENSED ENGINEER WITHIN STATE OF CALIFORNIA MUST BE SUBMITTED WITHIN 30 DAYS OF COMPLETION OF WORK.

REVISION NO. 2 20 APRIL 1972
 ADDITION OF 15" INLET - PAGE 2
 STA. 4193.29
 APPROVED *Thomas E. Howard*
 OFFICE OF COUNTY ENGINEER, NO. 19156

COLLECT CHARGES AS INDICATED

REVISION NO. 1 6 JAN. 1972
 1. ELIMINATED PAGE 4.
 APPROVED *Thomas E. Howard*
 OFFICE OF COUNTY ENGINEER, NO. 19156

REVISED 1-5-72 *George O. Asch*
 GEORGE O. ASCH R.C.E. 13530

PROFILE ALIGNMENT AND GRADE OF
SANITARY SEWERS **PC. 8661**
 PAGE 1
 CONSTRUCTED IN
 EASEMENTS IN LOTS 1 & 2 OF
 TRACT NO. 4216

PRIVATE CONTRACT NO. 8661

W.S. 38-D-4
 2 SHEETS; 3 PAGES

SCALE: VERT. 1"=4'
 HORIZ. 1"=40'

SEPTEMBER, 1971
 PREPARED IN THE OFFICES OF
NATIONAL ENGINEERING CO.
 255 N. HAZEN AVE., SUITE 200
 CITY OF ANAHEIM, CALIF.
 REG. C. E. NO. 15380

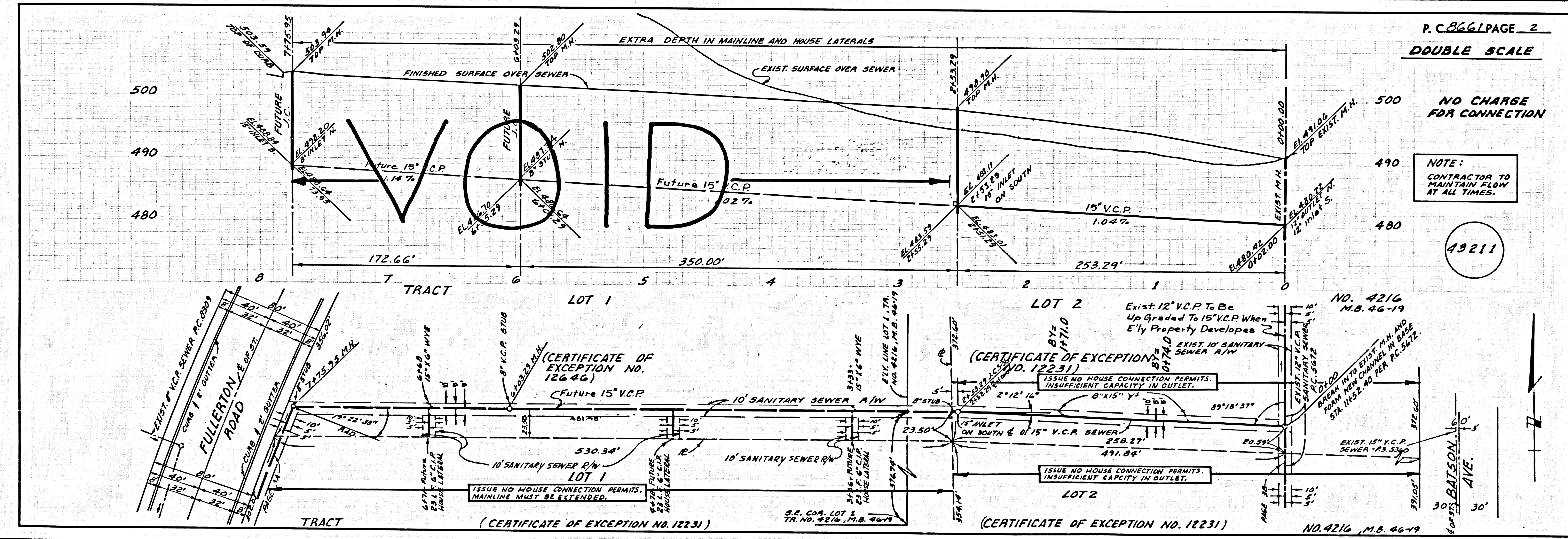
NOTE:
 GRADES TO WHICH THE IMPROVEMENT IS TO BE CONSTRUCTED ARE SHOWN ON PLANS AND PROFILES. GRADE POINTS FOR TOP OF CURB, CENTER LINE OF STREETS, OR CENTER LINE OF ALLEYS ARE SHOWN BY CIRCLES ON PROFILES AT ALL POINTS BETWEEN DESIGNATED POINTS. THE GRADES ARE TO BE ESTABLISHED SO AS TO CONFORM TO A STRAIGHT LINE DRAWN BETWEEN SAID DESIGNATED POINTS. THIS DRAWING AND THE DATA HEREON ARE HEREBY MADE A PART OF THE SPECIFICATIONS. WORK SHALL BE CONDUCTED ACCORDING TO THE STANDARD SPECIFICATIONS FOR PUBLIC WORKS CONSTRUCTION, 1970 EDITION, WITH THE SPECIAL PROVISIONS AND COUNTY SPECIFICATIONS, AND SHALL BE PROTECTED BY THE COUNTY ENGINEER. THE CONTRACTOR MUST OBTAIN A PERMIT TO LOCATE IN COUNTY STREETS FROM THE L.A. COUNTY ROAD DEPT. DISTRICT OFFICE NO. 1100. THE CONTRACTOR MUST OBTAIN A PERMIT TO LOCATE IN COUNTY STREETS FROM THE L.A. COUNTY ROAD DEPT. DISTRICT OFFICE NO. 1100. THE CONTRACTOR MUST OBTAIN A PERMIT TO LOCATE IN COUNTY STREETS FROM THE L.A. COUNTY ROAD DEPT. DISTRICT OFFICE NO. 1100. THE CONTRACTOR MUST OBTAIN A PERMIT TO LOCATE IN COUNTY STREETS FROM THE L.A. COUNTY ROAD DEPT. DISTRICT OFFICE NO. 1100. THE CONTRACTOR MUST OBTAIN A PERMIT TO LOCATE IN COUNTY STREETS FROM THE L.A. COUNTY ROAD DEPT. DISTRICT OFFICE NO. 1100.

COUNTY OF LOS ANGELES, CALIFORNIA
 HARVEY T. BARNOT COUNTY ENGINEER
 J. D. PARKHURST, CHIEF ENGINEER
 CO. SAN. DIST. NO. 2
 APPROVED BY *Thomas E. Howard* APPROVED BY *Harvey T. Barnot*
 REGIONAL ENGINEER DATE OFFICE ENGINEER

CHECKED BY: *Thomas E. Howard*
 NO. CE. NO. 19156 DATE

43210

J.N. 0371.19

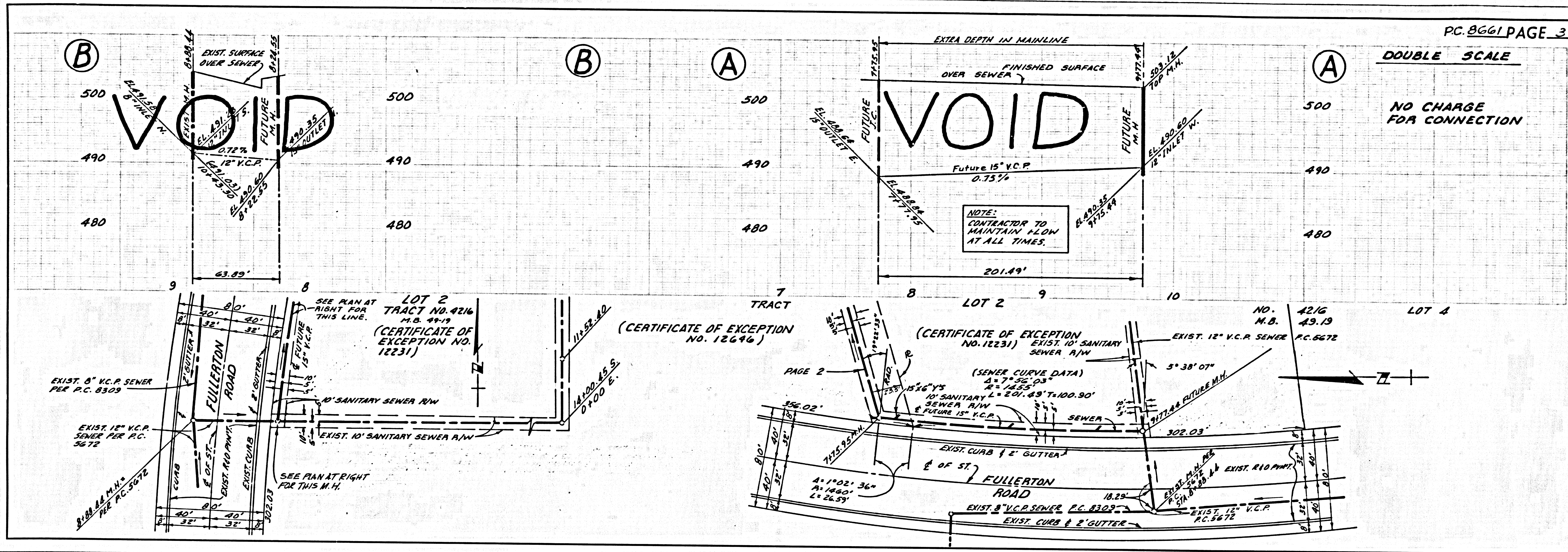


PC. 8661 PAGE 2
DOUBLE SCALE

NO CHARGE FOR CONNECTION

NOTE:
 CONTRACTOR TO MAINTAIN FLOW AT ALL TIMES.

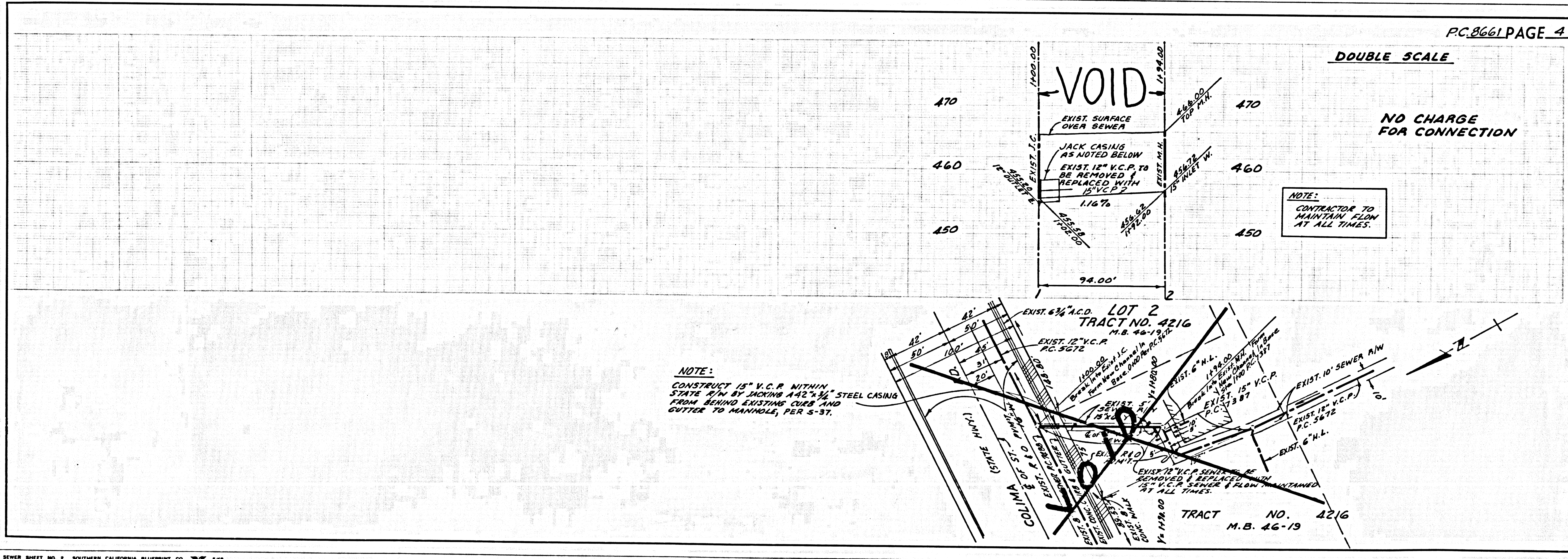
43211



DOUBLE SCALE

NO CHARGE FOR CONNECTION

NOTE:
CONTRACTOR TO MAINTAIN FLOW AT ALL TIMES.



DOUBLE SCALE

NO CHARGE FOR CONNECTION

NOTE:
CONTRACTOR TO MAINTAIN FLOW AT ALL TIMES.

NOTE:
CONSTRUCT 15" V.C.P. WITHIN STATE R.M. BY SINKING 42" x 42" STEEL CASING FROM BEHIND EXISTING CURB AND GUTTER TO MANHOLE, PER S-37.

TRACT NO. 4216 M.B. 46-19