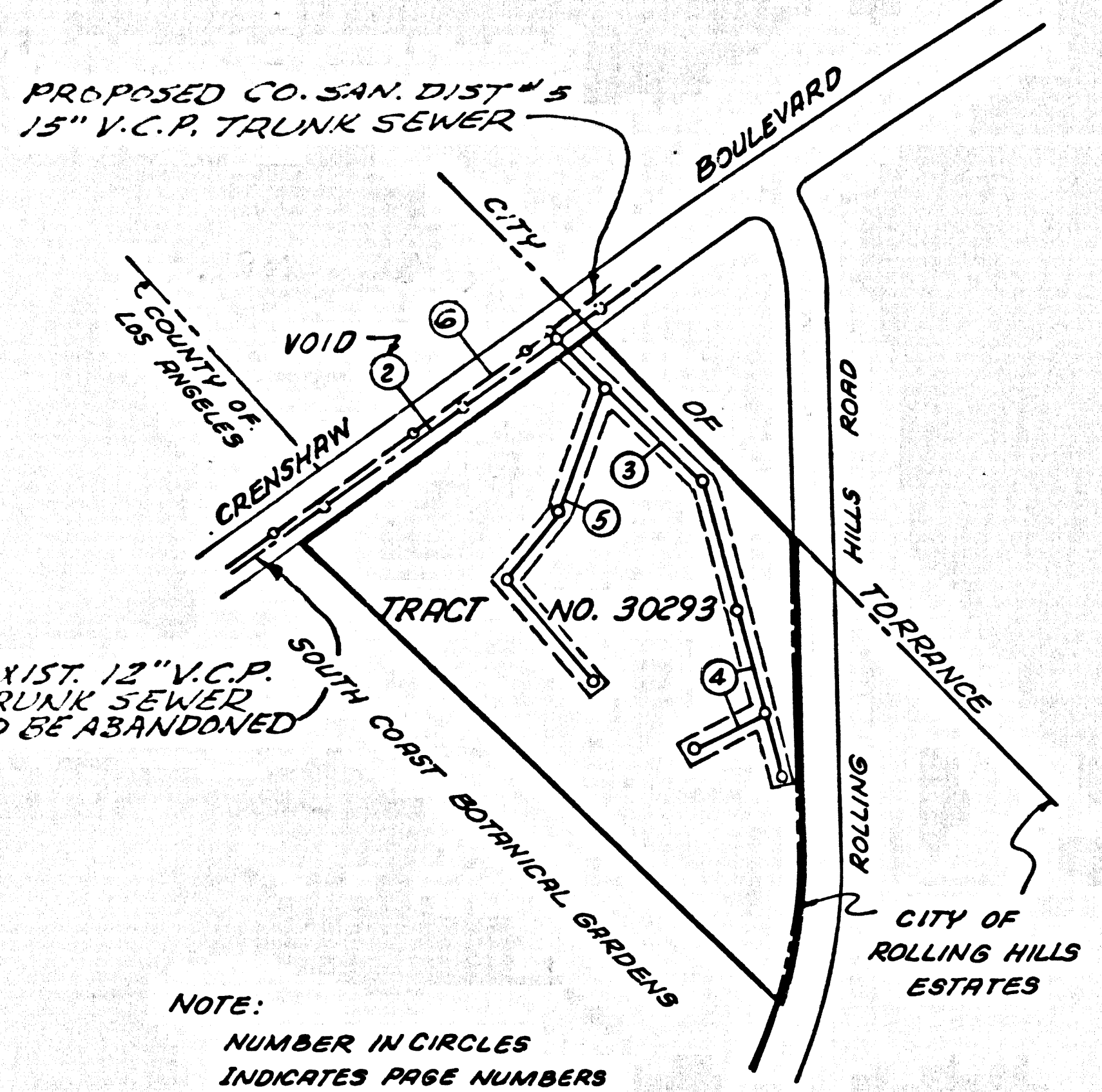


B.M. B.Y. 7313 ELEV. 239.267
 R.D. B.M. 776 EASTERLY CURB NEAR
 B.C.R. @ NORTHEAST CORNER OF CRENSHAW
 BLVD. & ROLLING HILLS RD., TO N1/4 30' E1/4 OF
 E. INTERSECTION QUAD. 1970



THE FOLLOWING COUNTY ENGINEER
 STANDARD PLANS APPLY TO THIS PROJECT

LEGEND	S-1
MINIMUM EXCAVATION SAFETY REQUIREMENTS	S-2
BRICK MANHOLE	S-3
NONREINFORCED PRECAST CONCRETE MANHOLE	S-3B
MANHOLE FRAMES AND COVER	S-35
MANHOLE STEP	S-37
BEDDING FOR SEWER PIPE	S-31
CRADLING AND ENCROSEMENT	S-23
WYE OR TEE SUPPORT	S-26
ALLOWABLE TRENCH WIDTHS	S-33
SADDLES	S-28
CHIMNEY PIPE & BASE	S-27

FULL COMPLIANCE WITH SECTION 306-1.3.3 OF THE
 SPECIAL PROVISIONS WILL BE REQUIRED FOR BACKFILL IN STREETS.
 CERTIFICATION OF COMPACTED BACKFILL & SAND EQUIVALENTS
 BY A QUALIFIED, REGISTERED TESTING LABORATORY SHALL
 BE PROVIDED BY THE PERMITTEE PRIOR TO THE ISSUANCE OF
 A CERTIFICATE OF PARTIAL ACCEPTANCE.

No connections for the disposal of
 industrial wastes shall be made to
 sewers shown on these drawings
 without written permission from the
 Chief Engineer and General Manager
 of the County Sanitation Districts.

County Sanitation Districts shall be
 notified prior to the following so
 that required inspection can be made
 (Phone 537-7096 • 838-1181)

Commencement of construction of man-
 hole on District trunk sewer.

Acceptance of this project.
 Construction of House connections to
 District Sewer Basins

NOTE:
 CONSTRUCT ALTERNATE "A" PAGES 2 & 3
 IF EXIST. 12" TRUNK SEWER IS IN OPERATION.
 CONSTRUCT ALTERNATE "B" PAGE 6 IF
 EXIST. 12" TRUNK SEWER IS ABANDONED AND
 L.A.C.D. TRUNK SEWER PER PLAN 57-92
 IS IN OPERATION.

NOTE: CONNECTION TO PROPOSED 12" V.C.P. TRUNK
 SEWER PER L.A. SANITATION DISTRICT PLAN 5-D-92
 TO BE CONSTRUCTED ONLY WHEN CONSTRUCTION OF
 PROPOSED SEWER HAS BEEN COMPLETED.

INDEX MAP
 P.C. 8662
 SCALE 1" = 400'

LOMITA BLDG. DIST. NO. 12

- NOTE:
- PROVIDE STAKES ON THE PROPERTY LINE OR PROPERTY LINES PRODUCED AT RIGHT ANGLES TO THE SEWER LINE AT THE CENTER LINE OF EACH MANHOLE.
 - NO REPRESENTATIVE OF THE COUNTY ENGINEER WILL SURVEY OR LAY OUT ANY PORTION OF THE WORK.
 - THE PRIVATE ENGINEER SHALL FURNISH THE COUNTY ENGINEER WITH GRADE SHEETS AND STATIONING FOR ALL HOUSE LATERALS AND "T" BRANCHES AND SHALL PROVIDE STAKES FOR THEM AT THEIR PROPER LOCATIONS WITH STATIONING PLAINLY MARKED. ALL HOUSE LATERALS SHALL BE CONSTRUCTED IN A STRAIGHT ALIGNMENT AT RIGHT ANGLES FROM THE MAIN LINE SEWER EXCEPT AS SHOWN ON THE PLANS. HOUSE LATERALS FROM CHIMNEYS SHALL NOT HAVE AN ANGLE OF LESS THAN 45° WITH THE MAIN LINE SEWER. ANY CHANGE IN ALIGNMENT SHALL BE REQUESTED IN WRITING BY THE PRIVATE ENGINEER.
 - THE PRIVATE ENGINEER SHALL FURNISH THE HOUSE LATERAL DEPTH AT THE PROPERTY LINE BELOW THE TOP OF CURB ELEVATION FOR EACH HOUSE LATERAL ON THE GRADE SHEET.
 - NO REVISIONS SHALL BE MADE IN THESE PLANS WITHOUT THE APPROVAL OF THE COUNTY ENGINEER.
 - THE CONTRACTOR SHALL NOTIFY THE CONSTRUCTION DIVISION BY TELEPHONE, MADISON 6-674, EXT. 81581, AT LEAST TWENTY-FOUR HOURS BEFORE STARTING ANY WORK UNDER THIS CONTRACT.
 - ALL STRUCTURES SHALL BE BUILT BRICK MANHOLES PER S-3 OR PRECAST CONCRETE MANHOLES PER S-3B, EXCEPT AS NOTED.
 - ALL MANHOLES SHALL BE BUILT TO THE TOP OF FINISHED GRADE.
 - MANHOLE TOPS IN UNIMPROVED RIGHTS-OF-WAY TO BE SIX INCHES ABOVE FINISHED GRADE.
 - USE EXTRA STRENGTH PIPE. ALL PIPE IS STANDARD DEPTH EXCEPT AS NOTED.
 - WITHDRAWN CLAY PIPE JOINTS SHALL BE TYPE "D", "F", OR "G" PER V.C.P. SPEC. SEC. 240-8.
 - IF A POWER POLE IS WITHIN THREE FEET OF THE SEWER, THE SEWER SHALL BE ENCASED, PER S-23, TWO FEET ON EACH SIDE FROM THE POINT OF INTERFERENCE.
 - IF DURING THE COURSE OF CONSTRUCTION IT IS DETERMINED THAT THERE IS LESS THAN FOUR FEET OF COVER OVER THE TOP OF A MAIN LINE OR HOUSE LATERAL V.C.P. SEWER WHICH IS NOT INDICATED ON THE PLANS, THE PIPE SHALL BE ENCASED PER S-23, UNLESS OTHERWISE APPROVED BY THE COUNTY ENGINEER.
 - HOUSE LATERALS TO BE CONSTRUCTED WITH INVERTS AT PROPERTY LINE 6 FEET BELOW CURB GRADE EXCEPT AS NOTED.
 - RESURFACE ALL TRENCHES WITHIN PAVED AREAS TO MEET L.A. COUNTY ROAD DEPT. OR CALIFORNIA STATE HIGHWAY REQUIREMENTS IN ACCORDANCE WITH PERMITS.
 - SEWERS TO BE TRENCH FOR LEAKAGE PER SEC. 204-2.3.7 OF THE STD. SPEC. OF SPECIAL PROVISIONS.
 - REFER TO SEC. 2-10-1.1 OF STD. SPEC. REGARDING SAFETY DEVICES.
 - SPECIAL BACKFILL IN DESIGNATED AREAS.
 - BACKFILL TRENCH & REPLACE OTHER EARTH REMOVED SO AS TO RECOVER THE ORIGINAL OR FINISHED GRADE OF BLENDS SHOWN ON THE GRADING PLAN APPROVED FOR THIS TRACT BY THE DIVISION OF STREET ENGINEERING.
 - ALL BACKFILL & EXCAVATION SHALL BE COMPACTED TO A MIN. OF 90% OF MAX. DENSITY PER ASTM. STD. METHOD OF TEST D-155-R-77 AS INDICATED. ACCEPTABLE CERTIFICATION OF SUCH COMPACTION SHALL BE SUBMITTED TO THE CONSTRUCTION DIV.

COLLECT CHARGES
 AS INDICATED

NOTICE TO CONTRACTOR
 The existence and location of any underground utility pipes or structures shown on these plans are obtained by a search of the available records. To the best of my knowledge there are no existing utilities except as shown on these plans. The contractor is required to take due precautionary measures to protect the utility lines shown and any other lines not of record or not shown on these plans.
 Richard A. Hunt
 C.E. 78218

PROFILE ALIGNMENT AND GRADE OF
 SANITARY SEWERS PAGE 1

PRIVATE CONTRACT NO. 8662

W.S. 27
 3 SHEETS, 5 PAGES

SCALE: HORIZ. 1" = 40' SEPT. 1971

PREPARED IN THE OFFICES OF
 V.T.N. LOS ANGELES
 5919 VAN NUYS BLVD. VAN NUYS CALIF.
 By: Richard A. Hunt
 REG. C. E. NO. 12218

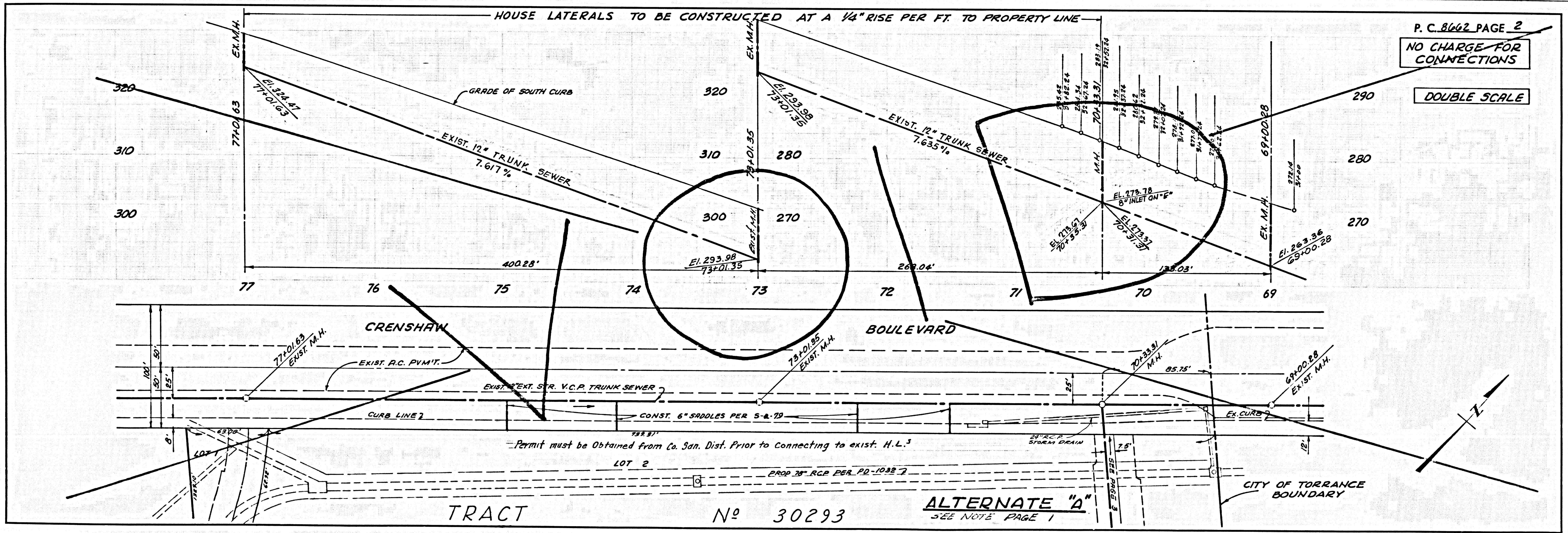
FOR LEGEND SEE PLAN NO. S-1

NOTE:
 GRADES TO WHICH THIS IMPROVEMENT IS TO BE CONSTRUCTED ARE SHOWN ON PLANS AND PROFILES. GRADE POINTS FOR TOP OF CURB, CENTER LINE OF STREETS, OR CENTER LINE OF ALLEYS ARE SHOWN BY CIRCLES ON PROFILES. AT ALL POINTS BETWEEN DESIGNATED POINTS THE GRADE SHALL BE ESTABLISHED SO AS TO CONFORM TO A STRAIGHT LINE DRAWN BETWEEN SAID DESIGNATED POINTS. ELEVATIONS ARE IN FEET ABOVE U.S.C. & G.S. SEA LEVEL DATUM OF 1929. THIS DRAWING AND THE DATA HEREON ARE HEREBY MADE A PART OF THE SPECIFICATIONS. WORK SHALL BE CONSTRUCTED ACCORDING TO STANDARD SPECIFICATIONS FOR PUBLIC WORKS CONSTRUCTION (1970 ED. WITH 1971 ED. AMENDMENTS) COUNTY ENGINEER, COUNTY OF LOS ANGELES, AND PAY A FEE TO THE COUNTY ENGINEER, REGIONAL OFFICE, DISTRICT OFFICE NO. 3, AND PAY A FEE TO THE COUNTY ENGINEER, REGIONAL OFFICE, SUFFICIENT TO COVER THE COST OF CONSTRUCTION INSPECTION AND RECORD PLANS. APPROVAL OF THIS PLAN BY THE COUNTY OF LOS ANGELES DOES NOT CONSTITUTE A REPRESENTATION AS TO THE ACCURACY OF THE LOCATION OF OR THE EXISTENCE OF ANY UNDERGROUND UTILITY PIPE, OR STRUCTURE WITHIN THE LIMITS OF THIS PROJECT. THIS NOTE APPLIES TO ALL PAGES. IF WORK IS TO BE DONE IN A STATE HIGHWAY, A PERMIT MUST BE OBTAINED FROM THE STATE OF CALIFORNIA, DIVISION OF HIGHWAYS, 1205 SOUTH STREET, LOS ANGELES, CALIFORNIA.

COUNTY OF LOS ANGELES, CALIFORNIA
 HARVEY T. BRANDT, COUNTY ENGINEER J. D. PARKHURST, CHIEF ENGINEER
 CO. SANIT. DIST. NO. 12
 APPROVED BY: Richard A. Hunt 4-25-72 APPROVED BY: J. D. Parkhurst
 REGIONAL ENGINEER OFFICE ENGINEER

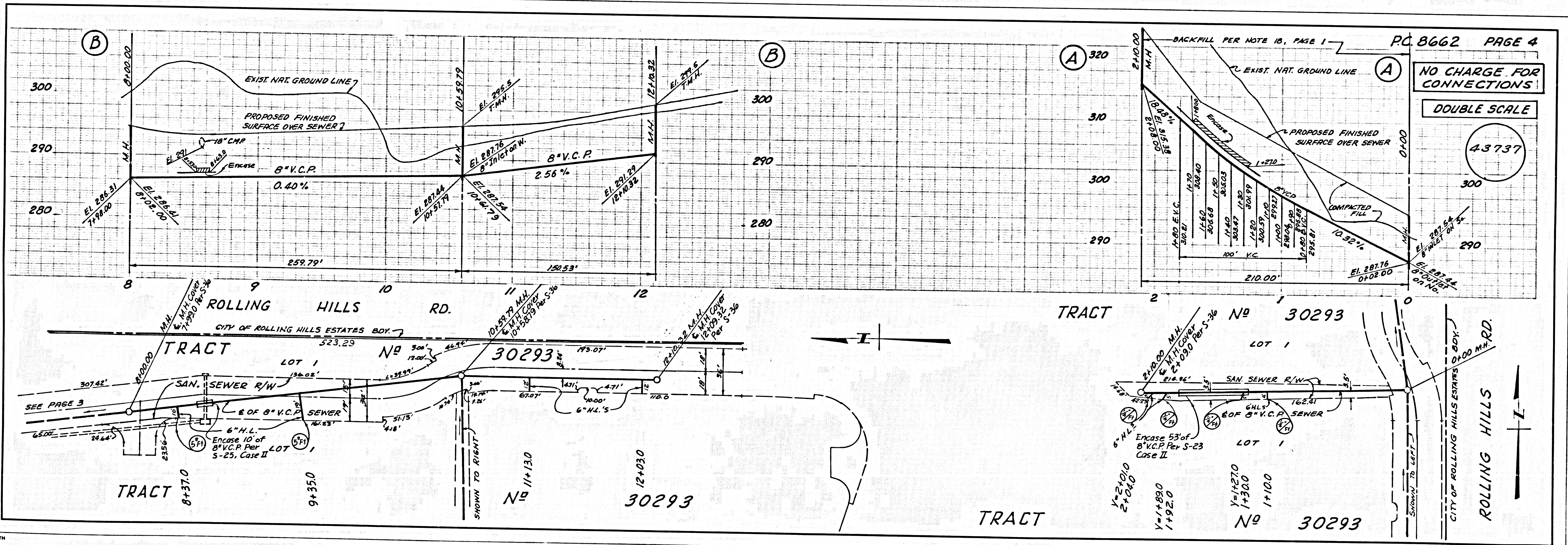
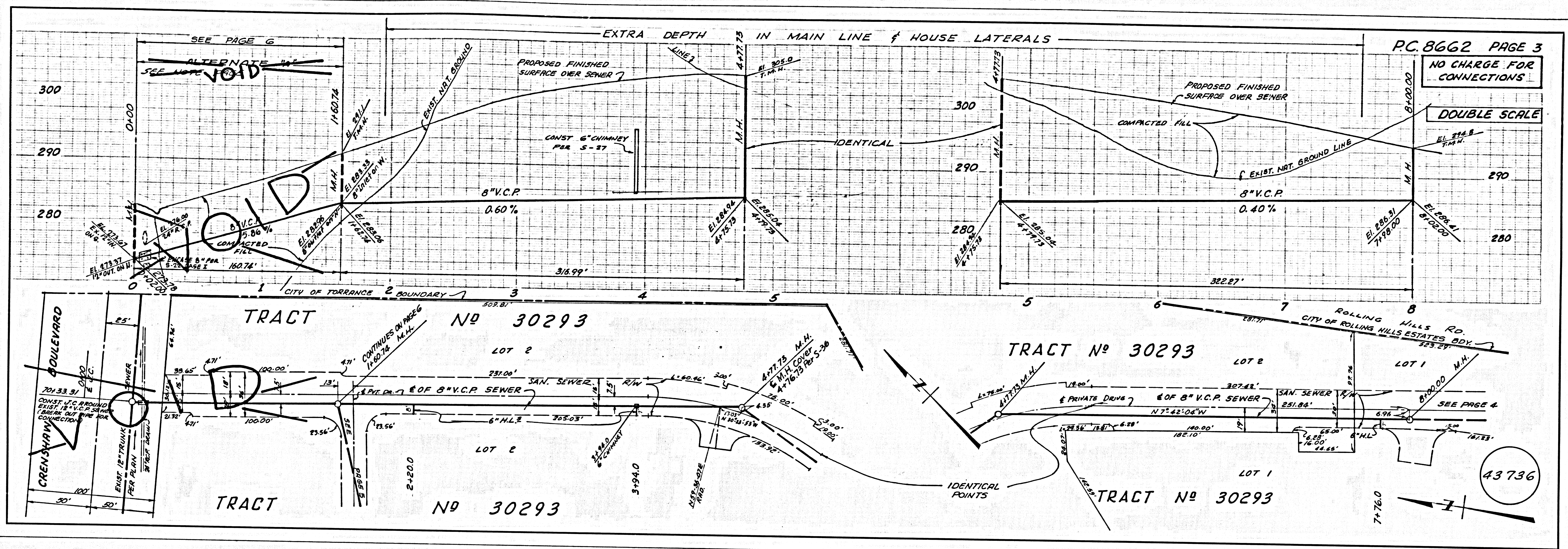
CHECKED BY: Bernard J. Valasek 4/15/72
 REG. C.E. NO. 12633 RESIDENCE 2712/72

J. N. 0250.02



P.C. 8662 PAGE 2
 NO CHARGE FOR CONNECTIONS
 DOUBLE SCALE

TRACT No 30293 ALTERNATE "A" SEE NOTE PAGE 1



2
 5228.29
 6506.9M TRACT

