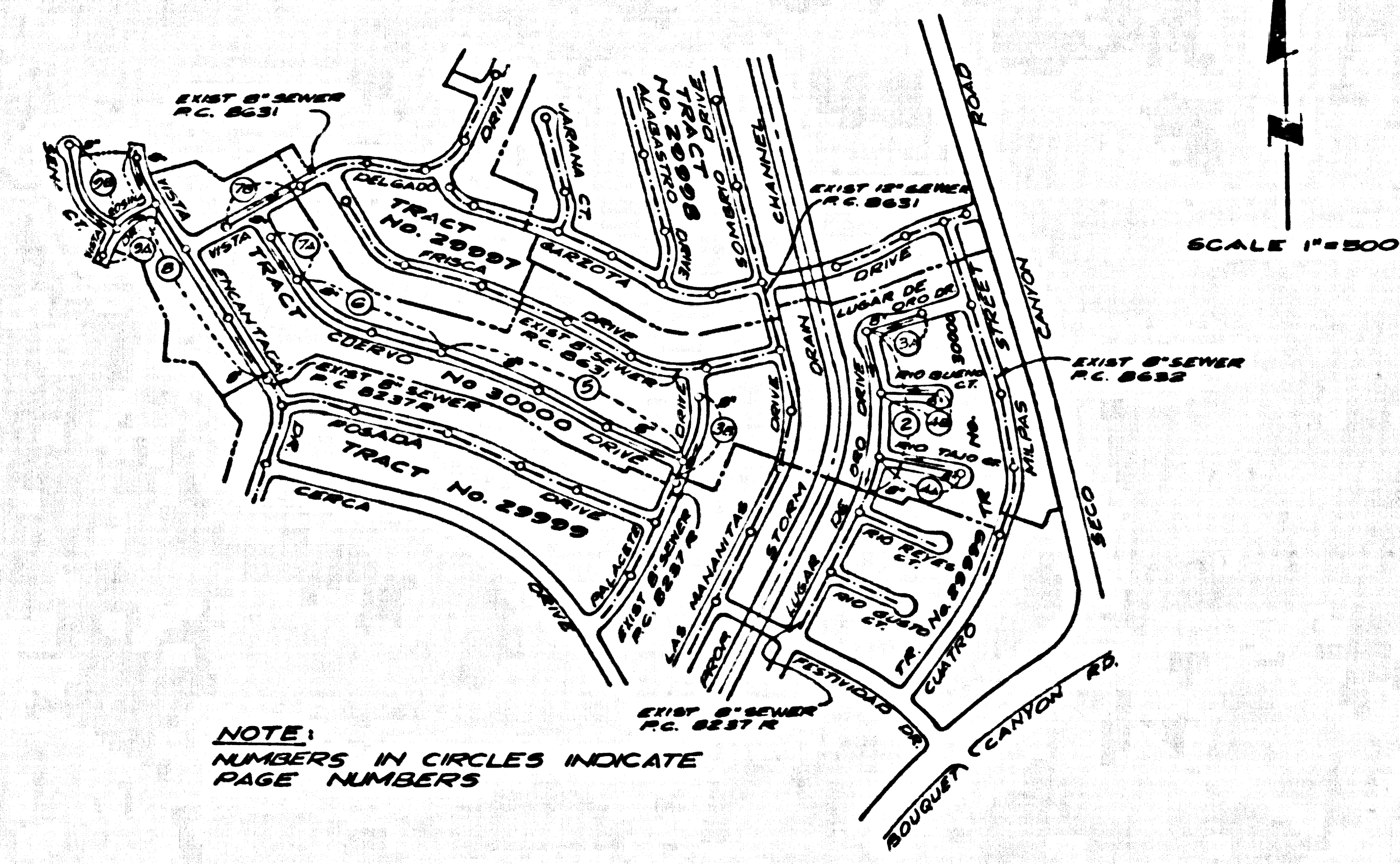


B.M. 81 622 ELEV. 1297.157  
 1. S.P.K. E. C.B. 6 FT. S. B.C.R. 0 55  
 COR. SAN FRANCISCO CANYON RD.  
 & CHARLEO DR. 60 FT. S. 6 30 FT.  
 S. C/L INT. MKD (EV. 4)  
 NEWHALL QUAD. 1965



NOTE:  
 NUMBERS IN CIRCLES INDICATE  
 PAGE NUMBERS

INDEX MAP  
 TRACT No. 30000  
 P.C. 8663

LOTS 1-30, 68-84 & 177-199  
 INCL. ARE SERVED BY EXISTING  
 H.L.'S CONSTRUCTED UNDER  
 P.C. 8631 & P.C. 8632

DOUBLE SCALE  
 GENERAL NOTES:

- ELEVATIONS ARE IN FEET ABOVE U.S.C. & G.S. SEA LEVEL DATUM OF 1929.
- NO REVISIONS SHALL BE MADE IN THESE PLANS WITHOUT THE APPROVAL OF THE COUNTY ENGINEER.
- NO REPRESENTATIVE OF THE COUNTY ENGINEER WILL SURVEY OR LAY OUT ANY PORTION OF THE WORK.
- CURBS TO WHICH THE IMPROVEMENT IS TO BE CONSTRUCTED ARE SHOWN ON PLANS AND INDICATE GRADE POINTS FOR TOP OF CURB, CENTER LINE OF STREETS, OR CENTER LINE OF ALLEYS ARE SHOWN BY CIRCLES ON PROFILES. AT ALL POINTS BETWEEN DESIGNATED POINTS THE GRADE SHALL BE ESTABLISHED SO AS TO CONFORM TO A STRAIGHT LINE DRAWN BETWEEN SAID DESIGNATED POINTS.
- THE PRIVATE ENGINEER SHALL FURNISH THE COUNTY ENGINEER WITH GRADE SHEETS AND STATIONING FOR ALL HOUSE LATERALS AND "T" OR "Y" BRANCHES AND SHALL PROVIDE STAKES FOR THEM AT THEIR PROPER LOCATIONS WITH STATIONING AND PLANNET MARKS. ALL HOUSE LATERALS SHALL BE CONSTRUCTED IN A STRAIGHT ALIGNMENT AT RIGHT ANGLES FROM THE MAIN LINE SEWER EXCEPT AS SHOWN ON THE PLANS. HOUSE LATERALS FROM COHESIVE SOILS SHALL NOT HAVE AN ANGLE OF USE THAN 45° WITH THE MAIN LINE SEWER. ANY CHANGE IN ALIGNMENT SHALL BE REQUESTED IN WRITING BY THE PRIVATE ENGINEER.
- THE PRIVATE ENGINEER SHALL FURNISH THE HOUSE LATERAL DEPTH AT THE PROPERTY LINE BELOW THE TOP OF CURB ELEVATION FOR EACH HOUSE LATERAL ON THE GRADE SHEET.
- BEFORE WORK CAN BE STARTED, THE CONTRACTOR MUST OBTAIN A PERMIT TO EXCAVATE IN COUNTY STREETS FROM THE L. A. COUNTY ROAD DEPT., DISTRICT OFFICE NO. \_\_\_\_\_ AND PAY A FEE TO THE COUNTY ENGINEER, ROOM #9, 5100 E. IMPERIAL AVENUE, DOWNNEY, CALIF. \_\_\_\_\_ REGIONAL OFFICE, TO COVER THE COST OF CONSTRUCTION INSPECTION AND RECORD PLANS.
- IF WORK IS TO BE DONE IN A STATE HIGHWAY, A PERMIT MUST BE OBTAINED FROM THE STATE OF CALIFORNIA, DIVISION OF HIGHWAYS, 128 SOUTH SPRING STREET, LOS ANGELES, CALIFORNIA.
- APPROVAL OF THIS PLAN BY THE COUNTY OF LOS ANGELES DOES NOT CONSTITUTE A REPRESENTATION AS TO THE ACCURACY OF THE LOCATION OF OR THE EXISTENCE OR NON-EXISTENCE OF ANY UNDERGROUND UTILITY PIPE, OR STRUCTURE WITHIN THE LIMITS OF THIS PROJECT. THIS NOTE APPLIES TO ALL PAGES.
- REFER TO SECTION 716.41 OF THE STANDARD SPECIFICATIONS, REGARDING SAFETY SIGNS.

County Sanitation Districts shall be notified prior to the following as a condition of the contract. No connection for the City of Los Angeles Industrial Wastewater shall be made to sewers shown on these drawings without written permission from the Chief Engineer and General Manager of the County Sanitation Districts.

CONSTRUCTION NOTES:

- WORK SHALL BE CONSTRUCTED ACCORDING TO THE STANDARD SPECIFICATIONS FOR PUBLIC WORKS CONSTRUCTION (1976 EDITION) WITH THE SUPPLEMENTS AND COUNTY ENGINEER SPECIAL PROVISIONS FOR THE CONSTRUCTION OF SANITARY SEWERS DATED APRIL 7, 1970 AND SHALL BE PROSECUTED ONLY IN THE PRESENCE OF THE COUNTY ENGINEER.
- THE CONTRACTOR SHALL NOTIFY THE CONSTRUCTION DIVISION BY TELEPHONE, IN ACCORDANCE WITH SECTION 81.58, AT LEAST TWENTY-FOUR HOURS BEFORE STARTING ANY WORK UNDER THIS CONTRACT.
- HOUSE LATERALS TO BE CONSTRUCTED WITH INVERTS AT PROPERTY LINE & FEET BELOW CURB GRADE EXCEPT AS NOTED.
- PIPE OR THE BRANCHES MAY BE USED FOR CONNECTIONS TO MANHOLE SEWERS EXCEPT AS NOTED.
- ALL STRUCTURES SHALL BE EITHER BRICK MANHOLES PER 5-2 OR PRECAST CONCRETE MANHOLES PER 5-26, EXCEPT AS NOTED.
- PROVIDE STAKES ON THE PROPERTY LINE OR PROPERTY LINES PRODUCE AT RIGHT ANGLES TO THE SEWER LINE AT THE CENTER LINE OF EACH MANHOLE.
- MANHOLE TOPS IN UNIMPROVED RIGHTS OF WAY TO BE SIX INCHES ABOVE FINISHED GRADE.
- VERTICAL CLAY PIPE JOINTS SHALL BE TYPE "T", "P", OR "B" PER STANDARD SPECIFICATIONS SECTION 200-2.
- IF A POWER POLE IS WITHIN THREE FEET OF THE SEWER, THE SEWER SHALL BE ENCASED, PER 5-23, CASE 2, TWO FEET ON EACH SIDE FROM THE POINT OF INTERFERENCE.
- IF DURING THE COURSE OF CONSTRUCTION IT IS DETERMINED THAT THERE IS LESS THAN FOUR FEET OF COVER OVER THE TOP OF A MAIN LINE OR HOUSE LATERAL V.C.P. SEWER WHICH IS NOT INDICATED ON THE PLANS, THE PIPE SHALL BE ENCASED PER 5-23, CASE 2 UNLESS OTHERWISE APPROVED BY THE COUNTY ENGINEER.
- ALL JOINTS BETWEEN CAST IRON PIPE AND VITRIFIED CLAY PIPE SHALL BE MADE WITH A RUBBER SLEEVE JOINT, TYPE "C" OR "F", THAT IS SHOWN BY NECESSITY PER STANDARD SPECIFICATIONS SECTION 200-2.
- SEWERS TO BE TESTED FOR LEAKAGE PER SECTION 200-2.2.7 OF THE STANDARD SPECIFICATIONS AND SPECIAL PROVISIONS.
- RESURFACE ALL TRENCHES WITHIN PAVED AREAS TO MEET L.A. COUNTY ROAD DEPT. OR CALIFORNIA STATE HIGHWAY REQUIREMENTS IN ACCORDANCE WITH PERMITS.
- FIGURE IN CIRCLE WITHIN LOT INDICATES INVERT DEPTH OF HOUSE LATERAL AT PROPERTY LINE.
- STATION WITHIN LOT INDICATES HOUSE LATERAL SHALL NOT BE CONSTRUCTED UPSTREAM OF THAT STATION.

CONSTRUCTED IN  
 TRACT NO. 30000  
 PRIVATE CONTRACT NO. 8663

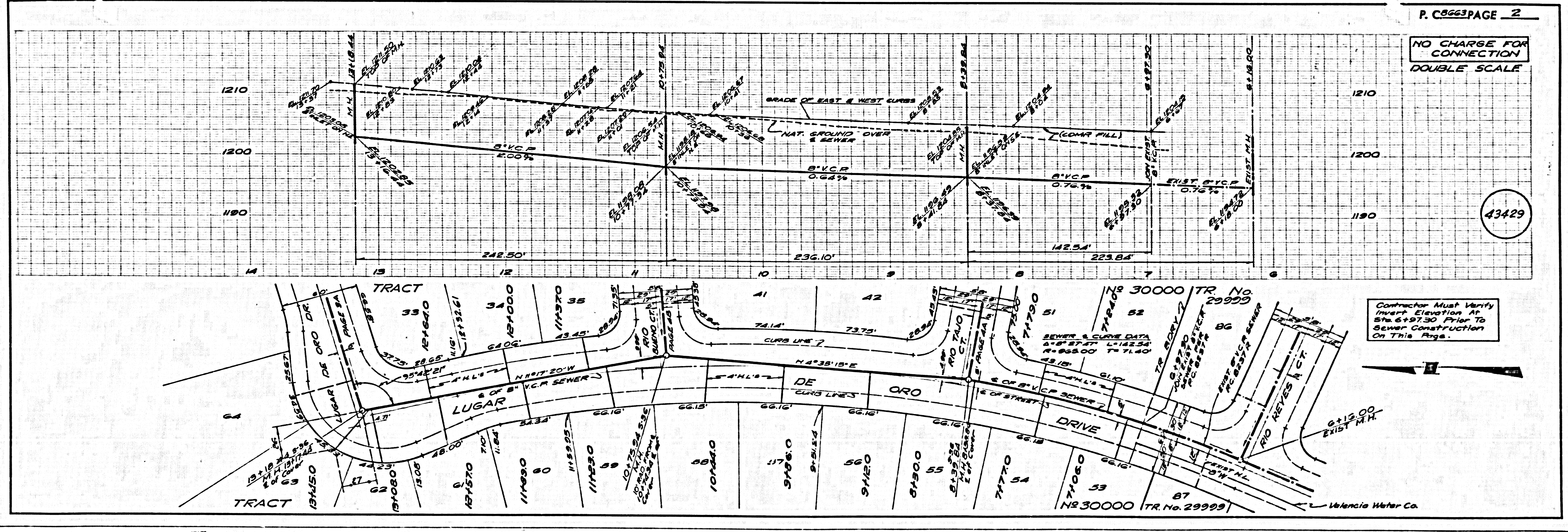
W.S. 62  
 5 SHEETS, 9 PAGES  
 SCALE: VERT. 1"=4'  
 HORIZ. 1"=40' MAR., 1972  
 PREPARED IN THE OFFICES OF  
 MCINTIRE & QUIROS INC.  
 670 MONTEREY PASS, ROAD MONTEREY PARK, CALIF.  
 BY: *Harold V. Rose*  
 REG. C.E. No. 17283

THE FOLLOWING LATEST REVISED STANDARD PLANS ON FILE IN THE OFFICE OF THE COUNTY ENGINEER SHALL APPLY IN THE CONSTRUCTION OF THIS PROJECT.

LEADING	5-1
MINIMUM PUBLIC SAFETY REQUIREMENTS	5-2
BRICK MANHOLE	5-3
STANDARD MANHOLE STEP	5-7
BRIDGING FOR SEWER PIPE	5-27
CRADLING AND ENCASEMENT	5-28
PIPE ON THE SUPPORT	5-29
ALLOWABLE TRENCH WIDTHS	5-30
LOADING MANHOLE FRAMES AND COVERS	5-31
NON-BRANDS PRECAST CONCRETE MANHOLE	5-32
SPECIAL HOUSE LATERALS	5-33

43428

COUNTY OF LOS ANGELES, CALIFORNIA  
 HARVEY T. BRANDT, COUNTY ENGINEER JOHN D. PARKHURST, CHIEF ENGINEER  
 APPROVED *R. Williams* 3/17/72 REGIONAL ENGINEER DATE APPROVED *J. Parkhurst* 3/17/72 OFFICE ENGINEER DATE  
 CHECKED *Harold V. Rose* 3-23-72 DATE  
 REG. C.E. NO. 14390  
 NEWHALL BLDG. DIST. NO. 8.2. I.N. 0250.02



NO CHARGE FOR CONNECTION  
 DOUBLE SCALE

43429

Contractor Must Verify  
 Invert Elevation At  
 Sta. 6+97.30 Prior To  
 Sewer Construction  
 On This Page.

