

B.M. BL 3017 ELEV. 1207.508
 CS MON 4 IN UP 33 FT. W C/L SAN FRANCISQUITO CYN. RD +0.2 MI. N BOUQUET CYN. RD 7 FT E PP 1482686 MKO (EL. 1) 2 IN IP 3 FT UP 2 FT E NEWHALL QUAD. 19 65

NEWHALL BLDG. DIST. NO. 8.2

PROFILE ALIGNMENT AND GRADE OF
 SANITARY SEWERS PAGE 1
 CONSTRUCTED IN

TRACT MAP 27952

PRIVATE CONTRACT NO. 8668

W.S. 62
 2 SHEETS, 3 PAGES

SCALE: VERT. 1"=4' APRIL, 1972

43445

PREPARED IN THE OFFICES OF

ANDEL ENGINEERING CO.

REG. C. E. NO. 10533

FOR LEGEND SEE PLAN NO. S-1

NOTE: THE DRAWING AND THE DATA HEREON ARE HEREBY MADE A PART OF THE SPECIFICATIONS. THE CONTRACTOR SHALL BE RESPONSIBLE FOR CHECKING THE ACCURACY OF ALL DATA AND GRADES SHOWN ON THIS DRAWING. THE CONTRACTOR SHALL BE RESPONSIBLE FOR OBTAINING ALL NECESSARY PERMITS FROM THE COUNTY ENGINEER AND THE STATE HIGHWAY DEPARTMENT. THE CONTRACTOR SHALL BE RESPONSIBLE FOR OBTAINING ALL NECESSARY PERMITS FROM THE STATE HIGHWAY DEPARTMENT. THE CONTRACTOR SHALL BE RESPONSIBLE FOR OBTAINING ALL NECESSARY PERMITS FROM THE STATE HIGHWAY DEPARTMENT.

FULL COMPLIANCE WITH SECTION 306-103 OF THE SPECIAL PROVISIONS WILL BE REQUIRED FOR BACKFILL IN STREETS. CERTIFICATION OF BACKFILL COMPACTION AND SAND EQUIVALENTS BY A QUALIFIED REGISTERED TESTING LABORATORY SHALL BE PROVIDED BY THE PERMITTEE PRIOR TO THE ISSUANCE OF A CERTIFICATE OF PARTIAL ACCEPTANCE.

County Sanitation Districts shall be notified prior to the following so that required inspection can be made (Phone 337-1025 s & 638-1181)

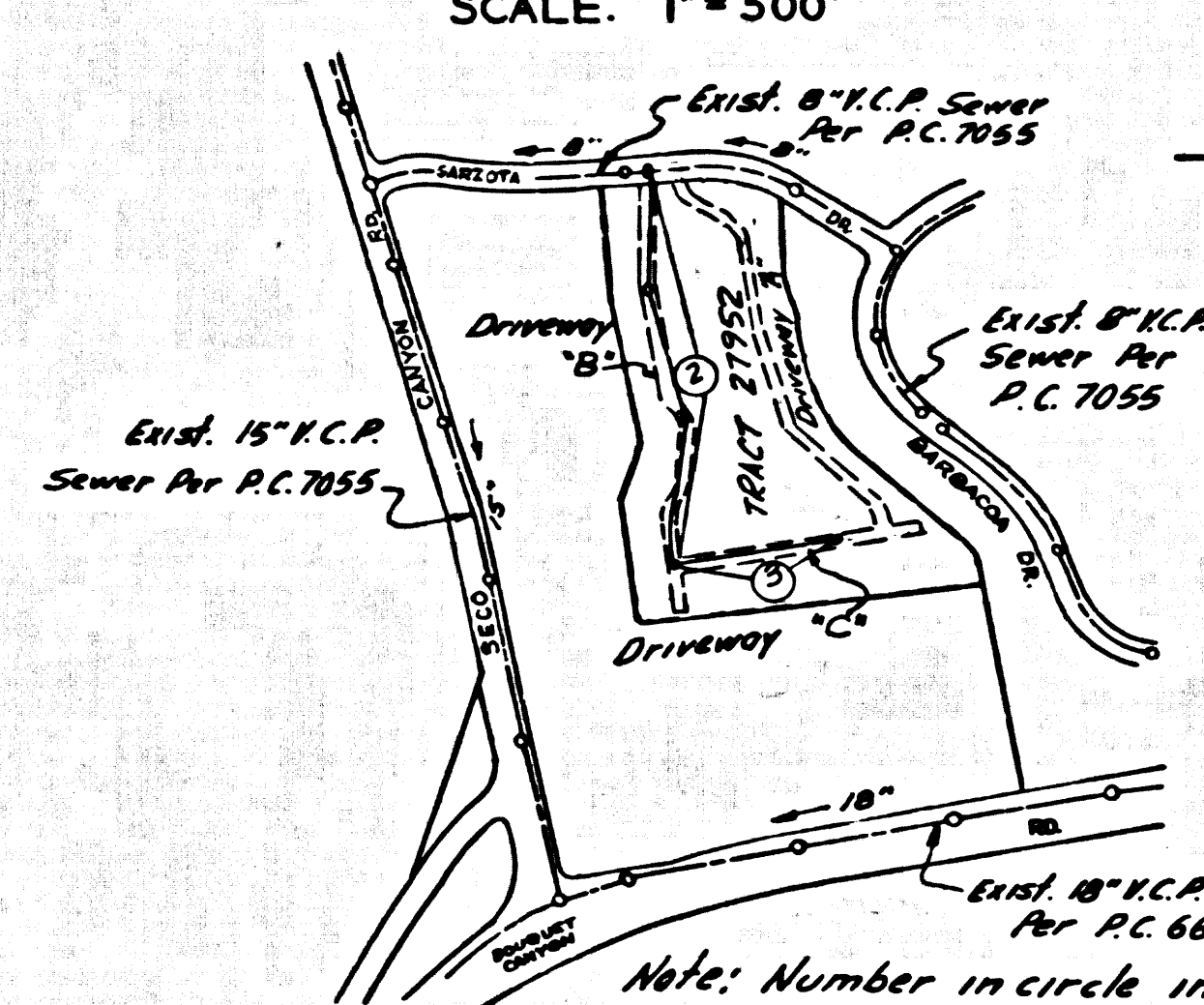
Acceptance of the project.

No connections for the disposal of industrial wastes shall be made to sewers shown on these drawings without written permission from the Chief Engineer and General Manager of the County Sanitation Districts.

- NOTES:
- PROVIDE STAKES ON THE PROPERTY LINE OR PROPERTY LINES PRODUCED AT RIGHT ANGLES TO THE SEWER LINE AT THE CENTER LINE OF EACH MANHOLE.
 - NO REPRESENTATIVE OF THE COUNTY ENGINEER WILL SURVEY OR LAY OUT ANY PORTION OF THE WORK.
 - THE PRIVATE ENGINEER SHALL FURNISH THE COUNTY ENGINEER WITH GRAD SHEETS AND STATIONING FOR ALL HOUSE LATERALS, "T", "Y", OR "C" BRANCHES AND SHALL PROVIDE STAKES FOR THEM AT THEIR PROPER LOCATIONS WITH STATIONING PLAINLY MARKED. ALL HOUSE LATERALS SHALL BE CONSTRUCTED IN A STRAIGHT ALIGNMENT AT RIGHT ANGLES FROM THE MAIN LINE SEWER EXCEPT AS SHOWN ON THE PLANS. HOUSE LATERALS FROM CHIMNEYS SHALL NOT HAVE AN ANGLE OF LESS THAN 45° WITH THE MAIN LINE SEWER. ANY CHANGE IN ALIGNMENT SHALL BE REQUESTED IN WRITING BY THE PRIVATE ENGINEER.
 - THE PRIVATE ENGINEER SHALL FURNISH THE HOUSE LATERAL DEPTH AT THE 27 1/2" LINE BELOW THE 6" FINISHED ELEVATION FOR EACH HOUSE LATERAL ON THE GRADE SHEET.
 - NO REVISIONS SHALL BE MADE IN THESE PLANS WITHOUT THE APPROVAL OF THE COUNTY ENGINEER.
 - THE CONTRACTOR SHALL NOTIFY THE CONSTRUCTION DIVISION BY TELEPHONE, MADISON 9-4242, EXT. 8232, AT LEAST TWENTY-FOUR HOURS BEFORE STARTING ANY WORK UNDER THIS CONTRACT.
 - MANHOLES SHALL BE BRICK SEWER STRUCTURES PER L.A. COUNTY STANDARD MANHOLES PER S.E. EXCEPT AS NOTED.
 - ALL JOINTS BETWEEN CAST IRON PIPE AND VITRIFIED CLAY PIPE SHALL BE MADE WITH A RUBBER SLEEVE JOINT, TYPE "C" OR "D" WITH BUSHING IF NECESSARY PER STANDARD SPECIFICATIONS, SECTION 808-2.
 - MANHOLE TOPS IN IMPROVED RIGHTS-OF-WAY TO BE LEVISED WITH FINISHED GRADE.
 - VITRIFIED CLAY PIPE JOINTS SHALL BE TYPE "D", 6" PER STANDARD SPEC. S SECTION 808-2.
 - USE EXTRA STRENGTH PIPE, ALL PIPE IS STANDARD EXCEPT AS NOTED.
 - IF A POWER POLE IS WITHIN THREE FEET OF THE SEWER, THE SEWER SHALL BE ENCASED PER S.E. TWO FEET ON EACH SIDE FROM THE POINT OF INTERFERENCE.
 - IF DURING THE COURSE OF CONSTRUCTION IT IS DETERMINED THAT THERE IS LESS THAN FOUR FEET OF COVER OVER THE TOP OF A MAIN LINE OR HOUSE LATERAL V.C.P. SEWER WHICH IS NOT INDICATED ON THE PLANS, THE PIPE SHALL BE ENCASED PER S.E., UNLESS OTHERWISE APPROVED BY THE COUNTY ENGINEER.
 - HOUSE LATERALS TO BE CONSTRUCTED WITH INVERTS AT 27 1/2" LINE 6 FEET BELOW 6" OF FINISHED ELEVATION EXCEPT AS NOTED.
 - REINFORCE ALL TRENCHES WITHIN PAVED AREAS TO MEET L.A. COUNTY ROAD DEPT. OR CALIFORNIA STATE HIGHWAY REQUIREMENTS IN ACCORDANCE WITH PERMITS.
 - REFER TO SPEC. PARAGRAPH OF STANDARD SPECS REGARDING SAFETY ORDERS.
 - SEWER PIPE BEDDING TO CONFORM TO S.E.
 - SMALL BRANCHES MAY BE USED FOR CONNECTIONS TO MAINLINE SEWER EXCEPT AS NOTED.
 - THE FOLLOWING COUNTY ENGINEER STANDARD PLANS APPLY TO THIS PROJECT:

STANDARD SPECIFICATIONS FOR THE CONSTRUCTION OF SEWERS	1-1
STANDARD SPECIFICATIONS FOR THE CONSTRUCTION OF MANHOLES	1-2
STANDARD SPECIFICATIONS FOR THE CONSTRUCTION OF VITRIFIED CLAY PIPE	1-3
STANDARD SPECIFICATIONS FOR THE CONSTRUCTION OF CAST IRON PIPE	1-4
STANDARD SPECIFICATIONS FOR THE CONSTRUCTION OF RUBBER SLEEVE JOINTS	1-5
STANDARD SPECIFICATIONS FOR THE CONSTRUCTION OF MANHOLE COVERS	1-6
STANDARD SPECIFICATIONS FOR THE CONSTRUCTION OF SEWER LATERALS	1-7
STANDARD SPECIFICATIONS FOR THE CONSTRUCTION OF SEWER CONNECTIONS	1-8
STANDARD SPECIFICATIONS FOR THE CONSTRUCTION OF SEWER TRENCHES	1-9
STANDARD SPECIFICATIONS FOR THE CONSTRUCTION OF SEWER BEDDING	1-10
STANDARD SPECIFICATIONS FOR THE CONSTRUCTION OF SEWER MANHOLES	1-11
STANDARD SPECIFICATIONS FOR THE CONSTRUCTION OF SEWER MANHOLE COVERS	1-12
STANDARD SPECIFICATIONS FOR THE CONSTRUCTION OF SEWER LATERALS	1-13
STANDARD SPECIFICATIONS FOR THE CONSTRUCTION OF SEWER CONNECTIONS	1-14
STANDARD SPECIFICATIONS FOR THE CONSTRUCTION OF SEWER TRENCHES	1-15
STANDARD SPECIFICATIONS FOR THE CONSTRUCTION OF SEWER BEDDING	1-16
STANDARD SPECIFICATIONS FOR THE CONSTRUCTION OF SEWER MANHOLES	1-17
STANDARD SPECIFICATIONS FOR THE CONSTRUCTION OF SEWER MANHOLE COVERS	1-18
STANDARD SPECIFICATIONS FOR THE CONSTRUCTION OF SEWER LATERALS	1-19
STANDARD SPECIFICATIONS FOR THE CONSTRUCTION OF SEWER CONNECTIONS	1-20
STANDARD SPECIFICATIONS FOR THE CONSTRUCTION OF SEWER TRENCHES	1-21
STANDARD SPECIFICATIONS FOR THE CONSTRUCTION OF SEWER BEDDING	1-22
STANDARD SPECIFICATIONS FOR THE CONSTRUCTION OF SEWER MANHOLES	1-23
STANDARD SPECIFICATIONS FOR THE CONSTRUCTION OF SEWER MANHOLE COVERS	1-24
STANDARD SPECIFICATIONS FOR THE CONSTRUCTION OF SEWER LATERALS	1-25
STANDARD SPECIFICATIONS FOR THE CONSTRUCTION OF SEWER CONNECTIONS	1-26
STANDARD SPECIFICATIONS FOR THE CONSTRUCTION OF SEWER TRENCHES	1-27
STANDARD SPECIFICATIONS FOR THE CONSTRUCTION OF SEWER BEDDING	1-28
STANDARD SPECIFICATIONS FOR THE CONSTRUCTION OF SEWER MANHOLES	1-29
STANDARD SPECIFICATIONS FOR THE CONSTRUCTION OF SEWER MANHOLE COVERS	1-30
STANDARD SPECIFICATIONS FOR THE CONSTRUCTION OF SEWER LATERALS	1-31
STANDARD SPECIFICATIONS FOR THE CONSTRUCTION OF SEWER CONNECTIONS	1-32
STANDARD SPECIFICATIONS FOR THE CONSTRUCTION OF SEWER TRENCHES	1-33
STANDARD SPECIFICATIONS FOR THE CONSTRUCTION OF SEWER BEDDING	1-34
STANDARD SPECIFICATIONS FOR THE CONSTRUCTION OF SEWER MANHOLES	1-35
STANDARD SPECIFICATIONS FOR THE CONSTRUCTION OF SEWER MANHOLE COVERS	1-36
STANDARD SPECIFICATIONS FOR THE CONSTRUCTION OF SEWER LATERALS	1-37
STANDARD SPECIFICATIONS FOR THE CONSTRUCTION OF SEWER CONNECTIONS	1-38
STANDARD SPECIFICATIONS FOR THE CONSTRUCTION OF SEWER TRENCHES	1-39
STANDARD SPECIFICATIONS FOR THE CONSTRUCTION OF SEWER BEDDING	1-40

TRACT MAP
 P.C. NO. 8668
 TRACT NO. 27952
 SCALE: 1"=500'



Revision 7-6-72
 Page 2
 Revised Drwy. grades between sta. 1+70 & 5+88.
 APPROVED: Harvey T. Brandt Co. Eng'g.
 By: [Signature] R.C.E. 14330
 OFFICE OF COUNTY ENGINEER

Revision 5-2-72
 Pages 2 & 3
 Added Sewer Laterals. Extend main line from Sta. 4+20.00 to Sta. 4+30.00 on Page 3
 APPROVED: Harvey T. Brandt Co. Eng'g.
 By: [Signature] R.C.E. 14330
 OFFICE OF COUNTY ENGINEER

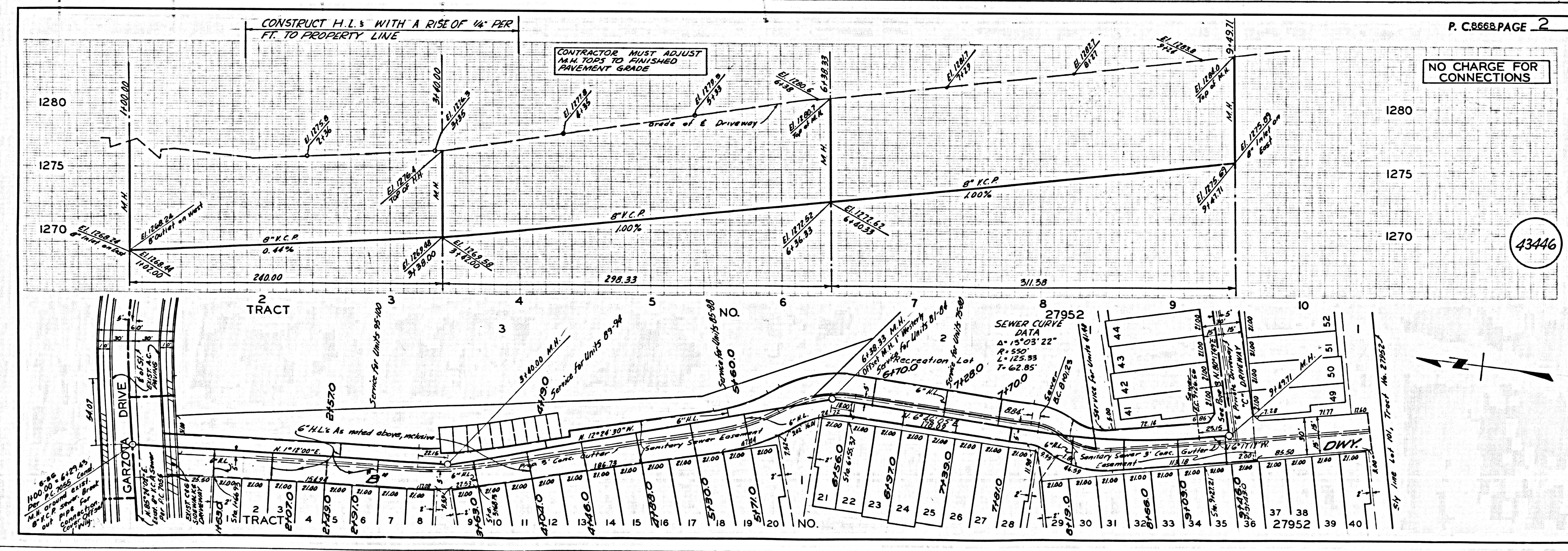
Revision Date 4-6-72
 Pages 2 & 3
 Revised Sewer alignment and grade due to revised Tract Map.
 APPROVED: Harvey T. Brandt Co. Eng'g.
 By: [Signature] R.C.E. 14330
 OFFICE OF COUNTY ENGINEER

COLLECT CHARGES AS INDICATED

NOTICE TO CONTRACTOR
 The existence and location of any underground utility pipes or structures shown on these plans are obtained by a search of the available records to the best of my knowledge there are no existing utilities except as shown on these plans. The contractor is required to take due precautionary measures to protect the utility lines shown and any other lines not of record or not shown on these plans.
 [Signature] R.C.E. 10533

COUNTY OF LOS ANGELES, CALIFORNIA
 HARVEY T. BRANDT COUNTY ENGINEER
 J. D. PARKHURST, CHIEF ENGINEER
 CO. SAN. DIST. NO. 26
 APPROVED BY: [Signature] REGIONAL ENGINEER
 APPROVED BY: [Signature] OFFICE ENGINEER
 CHECKED BY: [Signature] R.C.E. NO. 14330

J. N. 025002



NO CHARGE FOR CONNECTIONS

43447

