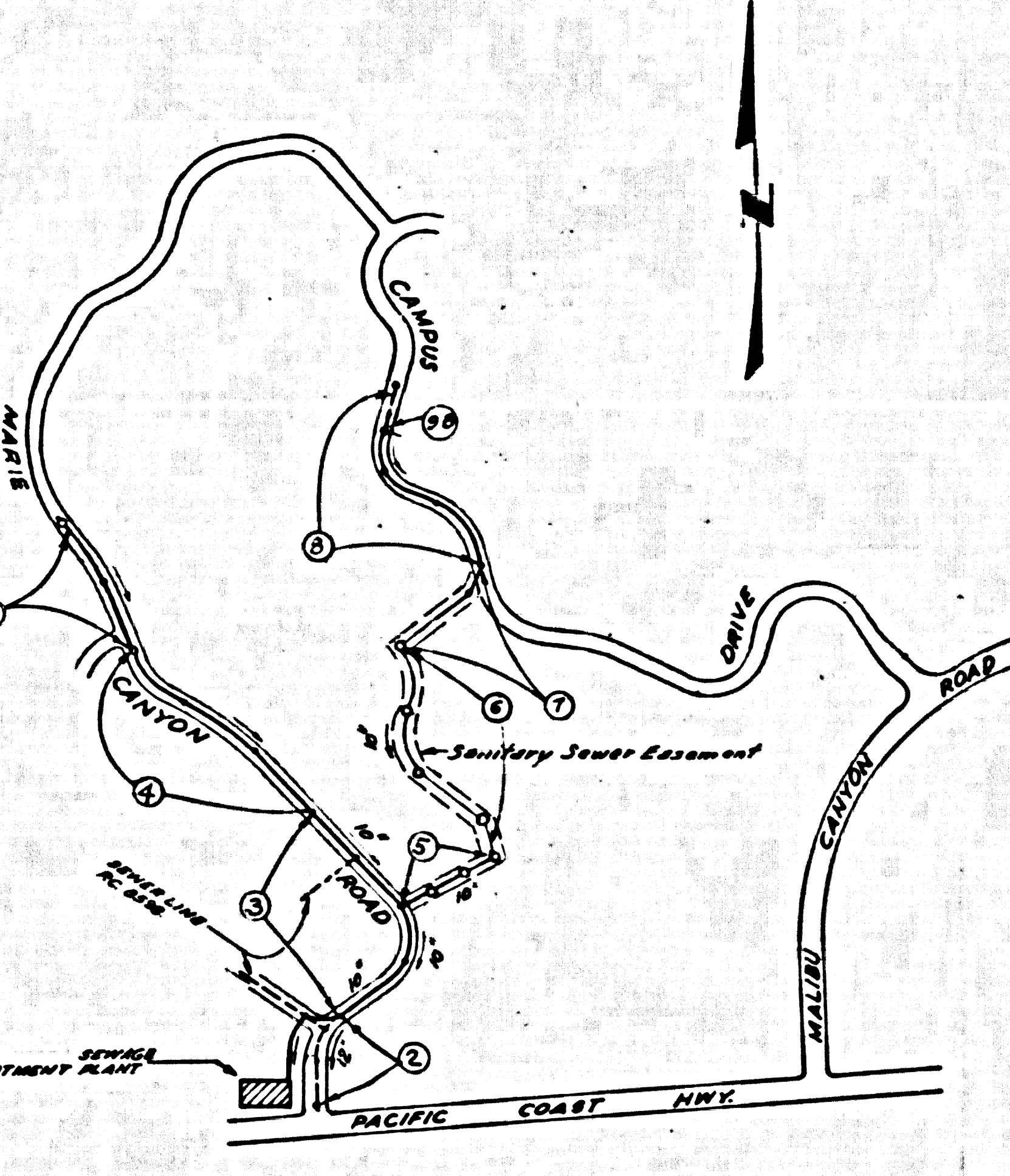


B.M. BY-5399 ELEV. 196.080
 CS MON BINDN CTR DIVIDING STRIP
 PACIFIC COAST HWY 12.5 MI N MALIBU
 CANYON BET LOTS AND COLSTICE
 CANYON 2.84 QUAD. 1962

DOUBLE SCALE



- GENERAL NOTES:**
1. ELEVATIONS ARE IN FEET ABOVE U.S.C. & G.S. SEA LEVEL DATUM OF 1929.
 2. NO IMPROVEMENTS SHALL BE MADE IN THESE PLANS WITHOUT THE APPROVAL OF THE COUNTY ENGINEER.
 3. NO IMPROVEMENTS OF THE COUNTY ENGINEER WILL BE MADE OR LAY OUT ANY PORTION OF THE WORK.
 4. GRADES TO WHICH THIS IMPROVEMENT IS TO BE CONSTRUCTED ARE SHOWN ON PLANS AND PROFILES. GRADE POINTS FOR TOP OF CURB, CENTER LINE OF STREET, OR CENTER LINE OF ALLEYS ARE SHOWN BY CIRCLES ON PROFILES. AT ALL POINTS BETWEEN BENCH MARKS POINTS THE GRADE SHALL BE ESTABLISHED TO AS TO CONFORM TO A STRAIGHT LINE BETWEEN SAID BENCHMARK POINTS.
 5. THE PRIVATE ENGINEER SHALL FURNISH THE COUNTY ENGINEER WITH GRADE SHEETS AND REVISIONS FOR ALL HOUSE LATERALS AND 12" OR 15" BRANCHES AND SHALL PROVIDE STAKES FOR THESE AT ALL PROPER LOCATIONS WITH STATIONING PLAINLY MARKED. ALL HOUSE LATERALS SHALL BE CONSTRUCTED IN A STRAIGHT ALIGNMENT AT RIGHT ANGLES FROM THE MAIN LINE SEWER EXCEPT AT SHOTS ON THE PLANS. HOUSE LATERALS FROM CHIMNEYS SHALL NOT HAVE AN ANGLE OF MORE THAN 45° WITH THE MAIN LINE SEWER. ANY CHANGE IN ALIGNMENT SHALL BE REQUESTED BY THE PRIVATE ENGINEER.
 6. THE PRIVATE ENGINEER SHALL FURNISH THE HOUSE LATERAL DEPTH AT THE PROPERTY LINE BELOW THE TOP OF CURB ELEVATION FOR EACH HOUSE LATERAL ON THE GRADE SHEET.
 7. BEFORE WORK CAN BE STARTED, THE CONTRACTOR MUST OBTAIN A PERMIT TO EXCAVATE IN COUNTY STREETS FROM THE L.A. COUNTY ROAD DEPT., DISTRICT OFFICE NO. 3 AND PAY A FEE TO THE COUNTY ENGINEER, AT THE MALIBU REGIONAL OFFICE, TO COVER THE COST OF CONSTRUCTION INSPECTION AND RECORD PLANS.
 8. IF WORK IS TO BE DONE IN A STATE HIGHWAY, A PERMIT MUST BE OBTAINED FROM THE STATE OF CALIFORNIA, DIVISION OF HIGHWAYS, 130 SOUTH SPRING STREET, LOS ANGELES, CALIFORNIA.
 9. APPROVAL OF THIS PLAN BY THE COUNTY OF LOS ANGELES DOES NOT CONSTITUTE A REPRESENTATION AS TO THE ACCURACY OF THE LOCATION OF OR THE EXISTENCE OR NON-EXISTENCE OF ANY UNDERGROUND UTILITY PIPE, OR STRUCTURE WITHIN THE LIMITS OF THIS PROJECT. THE HOLES APPEAR ON ALL PAGES.
 10. REFER TO SECTION 7-16.1 OF THE STANDARD SPECIFICATIONS, REGARDING SAFETY ORDERS.

TO BE CONSTRUCTED FOR
PEPPERDINE UNIVERSITY 49148

PRIVATE CONTRACT NO. 8677

W.S. 9/
 6 SHEETS, 11 PAGES

SCALE: VERT. 1"=5' NOV. 16, 1971
 HORIZ. 1"=40'
 PREPARED IN THE OFFICES OF
OLEN MURREY CIVIL ENGINEER
 223 E. GARVEY AVE. MONTEREY PARK, CALIF.
 BY: *Olen Murrey* REG. C. E. No. 9548

REVISION NO. 3 DATE AUG. 9 1972
 REVISED PAGES 5, 5A, 6 & 7
 ADDED M.H. AT STA. 5+99.01, PAGE 5
 REVISE INDEX MAP
 APPROVED *[Signature]* DATE: 8/23/72
 DEPT. OF COUNTY ENGINEER

REVISION NO. 2 DATE MARCH 15, 1972
 ADD PAGES 10 & 11 PRIVATE SEWER
 REVISE PAGES 5, 5A, 6, 7 & 9.
 APPROVED *[Signature]* DATE: 3/17/72
 DEPT. OF COUNTY ENGINEER

REVISION NO. 1 DATE JAN. 27, 1972
 Page 2, Moved M.H. from Sta. 1+85.00 to Sta. 7+30.00
 Page 8, Added M.H. at Sta. 26+03.85, & Removed 11.12.5' from E. side of Sewer Line.
 Page 9, Added "B" Line of Removed H.L.
 Page 31A, Removed H.L. above M.H. 12+63.76, Marie Canyon Rd.
 Page 5, Added 6" V.C.P. Page 5A, Added 6" V.C.P.
 APPROVED *[Signature]* DATE: 1/27/72
 DEPT. OF COUNTY ENGINEER

ISSUE NO PERMITS UNTIL
 OUTLET CLEARED CALL
 SANITATION DIVISION.

ISSUE NO PERMITS UNTIL
 EASEMENT CLEARED CALL
 SANITATION DIVISION.

PC. 8677
 INDEX MAP
 SCALE: 1"=600'

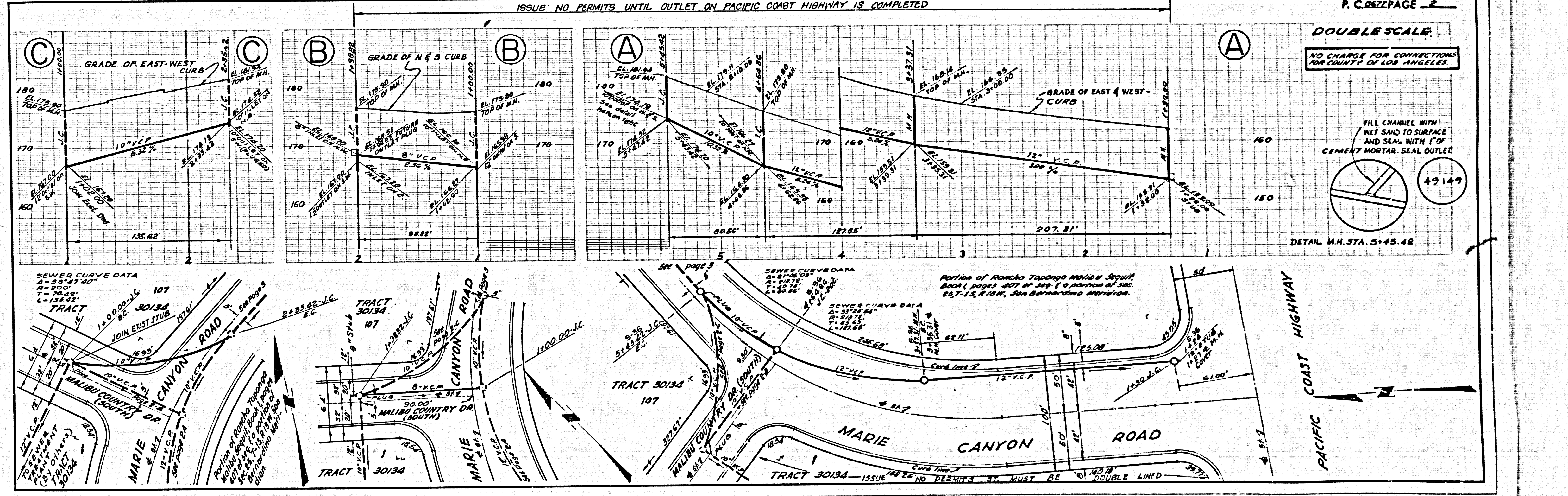
- CONSTRUCTION NOTES:**
1. WORK SHALL BE CONSTRUCTED ACCORDING TO THE STANDARD SPECIFICATIONS FOR PUBLIC WORKS CONSTRUCTION (1970 EDITION) WITH THE SUPPLEMENTED AND COUNTY ENGINEER SPECIAL PROVISIONS FOR THE CONSTRUCTION OF SANITARY SEWERS DATED APRIL 1, 1971. ALL WORK SHALL BE PROSECUTED ONLY IN THE PRESENCE OF THE COUNTY ENGINEER.
 2. THE CONTRACTOR SHALL NOTIFY THE CONSTRUCTION DIVISION BY TELEPHONE, IN WRITING 2-48, SEE 2.11, AT LEAST TWENTY-FOUR HOURS BEFORE STARTING ANY WORK UNDER THIS CONTRACT.
 3. HOUSE LATERALS TO BE CONSTRUCTED WITH INVERTS AT PROPERTY LINE & FEET BELOW CURB GRADE EXCEPT AS NOTED.
 4. PIPE ON THE BRANCHES MAY BE USED FOR CONNECTIONS TO BRANCHES EXCEPT AS NOTED.
 5. ALL STRUCTURES SHALL BE STIFF BRICK MANHOLES PER 5.3 OR PRECAST CONCRETE MANHOLES PER 5.3A, EXCEPT AS NOTED.
 6. PROVIDE STAKES ON THE PROPERTY LINE OR PROPERTY LINES PRODUCED AT RIGHT ANGLES TO THE SEWER LINE AT THE CENTER LINE OF EACH MANHOLE.
 7. MANHOLE JOINTS IN UNIMPROVED GRADES OF WAY TO BE BE BRICKS ABOVE FINISHED GRADE.
 8. VITRIFIED CLAY PIPE JOINTS SHALL BE TYPE "D", "P", OR "W" PER STANDARD SPECIFICATIONS SECTION 580-2.
 9. IF A POWER POLE IS WITHIN THREE FEET OF THE SEWER, THE SEWER SHALL BE SHIELDED, PER 5.25, CASE 2, TWO FEET ON EACH SIDE FROM THE POINT OF INTERFERENCE.
 10. IF DURING THE COURSE OF CONSTRUCTION IT IS DETERMINED THAT THERE IS LESS THAN FOUR FEET OF COVER OVER THE TOP OF A MAIN LINE OR HOUSE LATERAL V.C.P. SEWER WHICH IS NOT SHIELDED ON THE PLANS, THE PIPE SHALL BE SHIELDED PER 5.25, CASE 12 WHERE OTHERWISE APPROVED BY THE COUNTY ENGINEER.
 11. ALL JOINTS BETWEEN CAST IRON PIPE AND VITRIFIED CLAY PIPE SHALL BE MADE WITH A RUBBER GLEVE JOINT, TYPE "C" OR "D", FIFTH EDITION IF NECESSARY PER STANDARD SPECIFICATIONS, SECTION 580-4.
 12. ALL V.C.P. PIPE SHALL BE TESTED FOR LEAKAGE PER SECTION 508-2-3-7 OF THE STANDARD SPECIFICATIONS (SPECIAL).
 13. DETECT ALL BRANCHES WITHIN PAYEE AREAS TO MEET L.A. COUNTY ROAD DEPT. OR CALIFORNIA STATE HIGHWAY REQUIREMENTS IN ACCORDANCE WITH PERMITS.

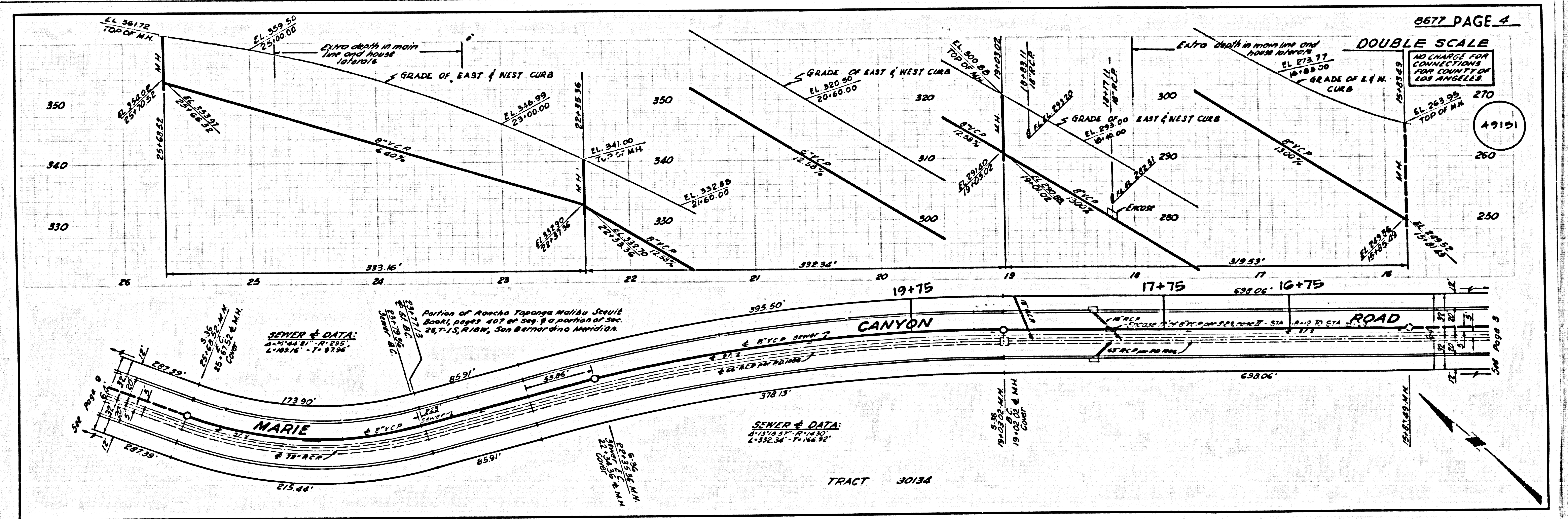
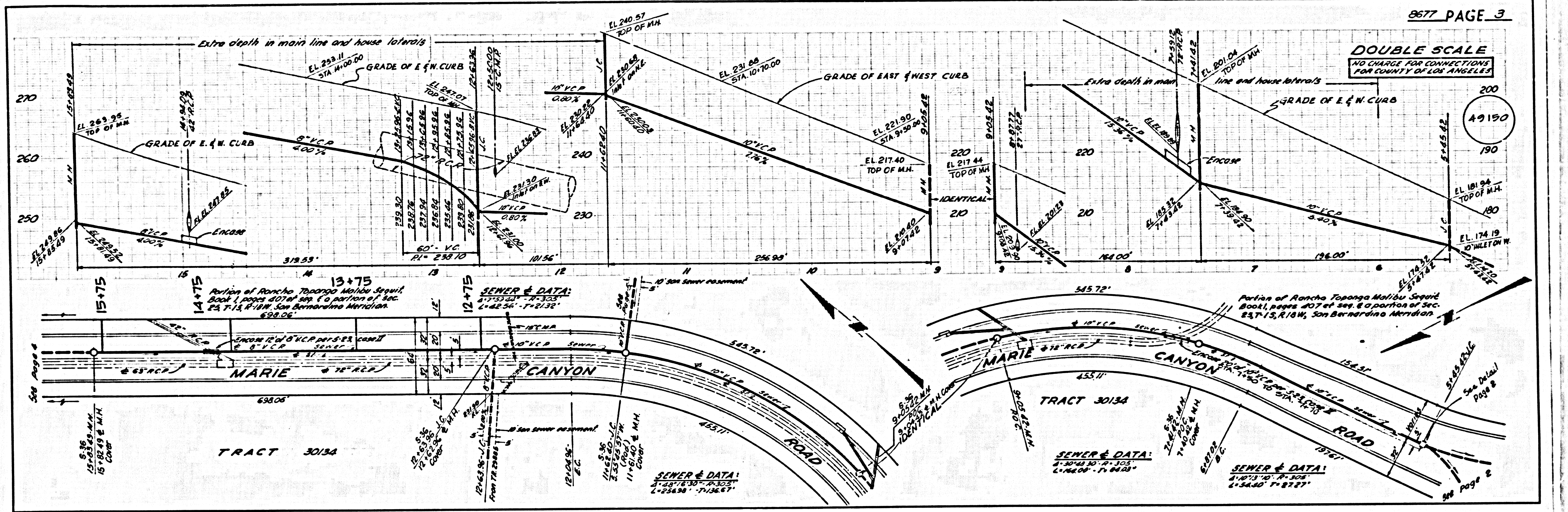
THE FOLLOWING LATEST REVISION STANDARD PLANS ON FILE IN THE OFFICE OF THE COUNTY ENGINEER SHALL APPLY IN THE CONSTRUCTION OF THIS PROJECT:

SEWER	5.0
MINIMUM PUBLIC SAFETY REQUIREMENTS	5.0
BRICK MANHOLES	5.0
STANDARD MANHOLE DEPT	5.0
BRANCHES FOR CURB PIPE	5.0
CHARMING AND BRASSWORK	5.0
WYS ON THE SUPPORT	5.0
ALLOWABLE BRANCH INVERTS	5.0
SCHEMATIC MANHOLE PLANS AND SEWER	5.0
NON-SUPPORTS PRECAST CONCRETE MANHOLES	5.0
ANCHOR BLOCKS	5.0
BAFFLE BOARD	5.0

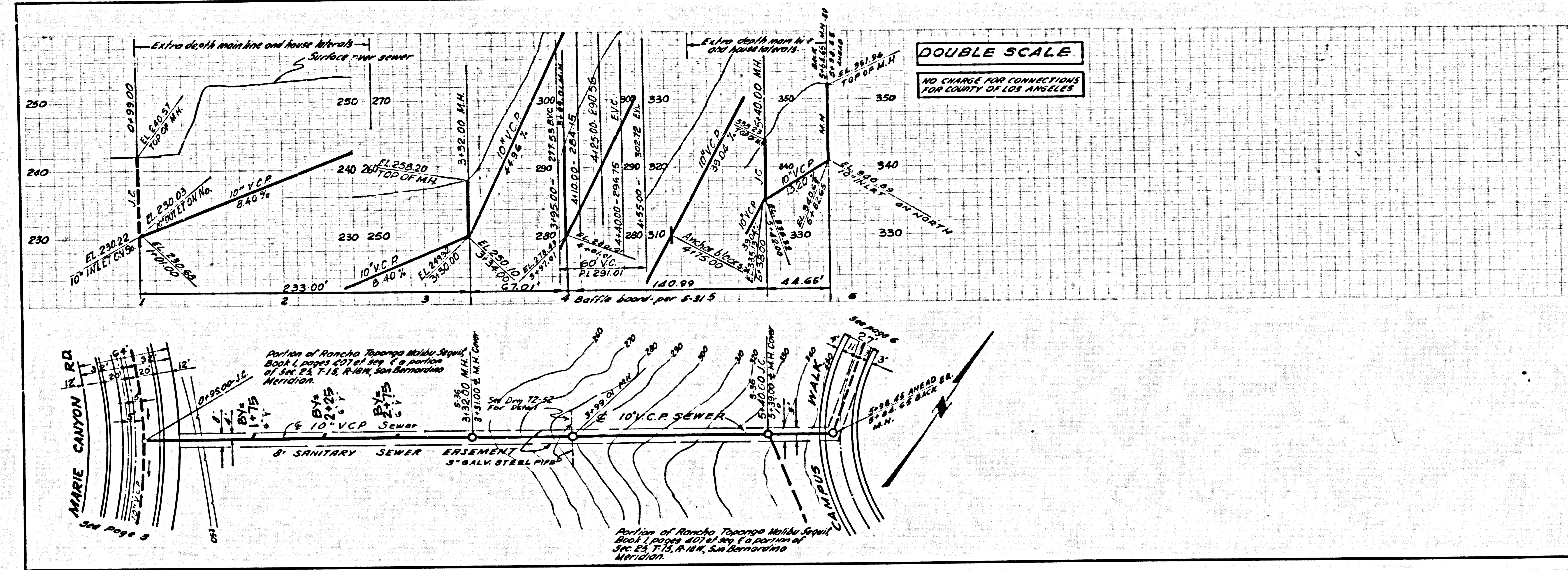
COUNTY OF LOS ANGELES, CALIFORNIA
 HARVEY E. BRANDT, COUNTY ENGINEER

APPROVED *[Signature]* DATE: 11/17/72
 CHECKED *[Signature]* DATE: 11/17/72
 REG. C. E. NO. 17732
 MALIBU BLDG. DIST. 9.2 J.N. 057123

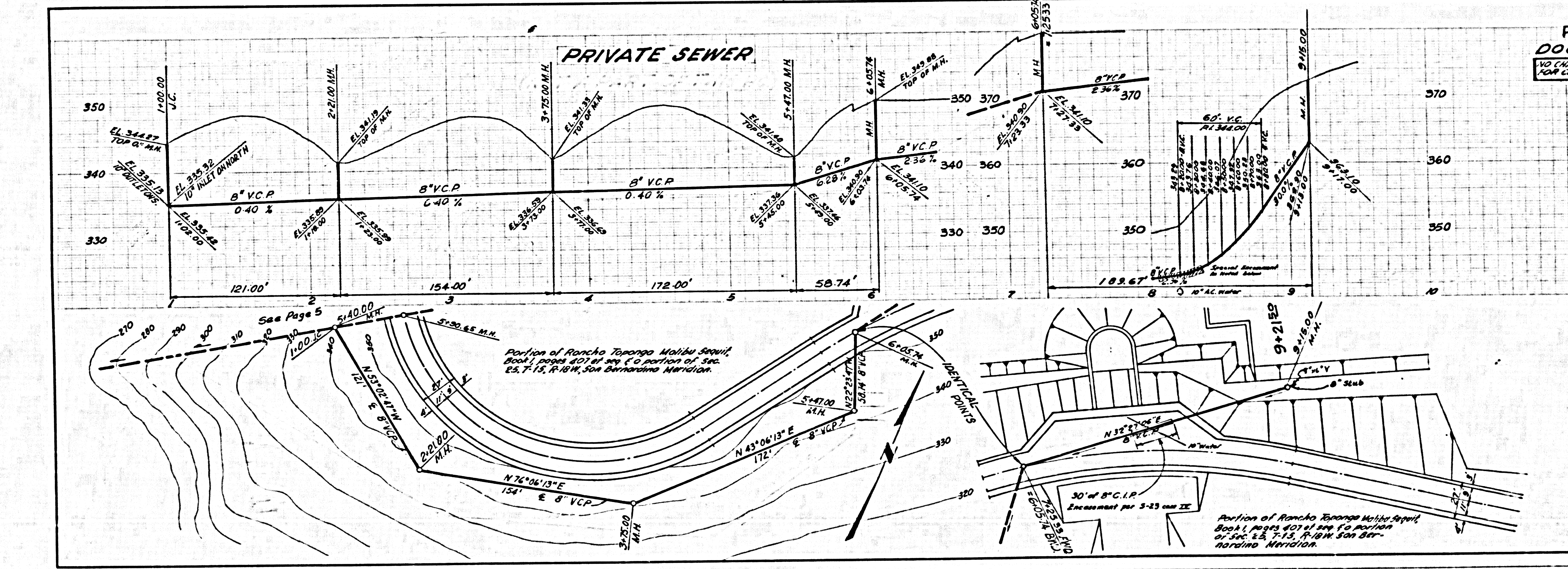
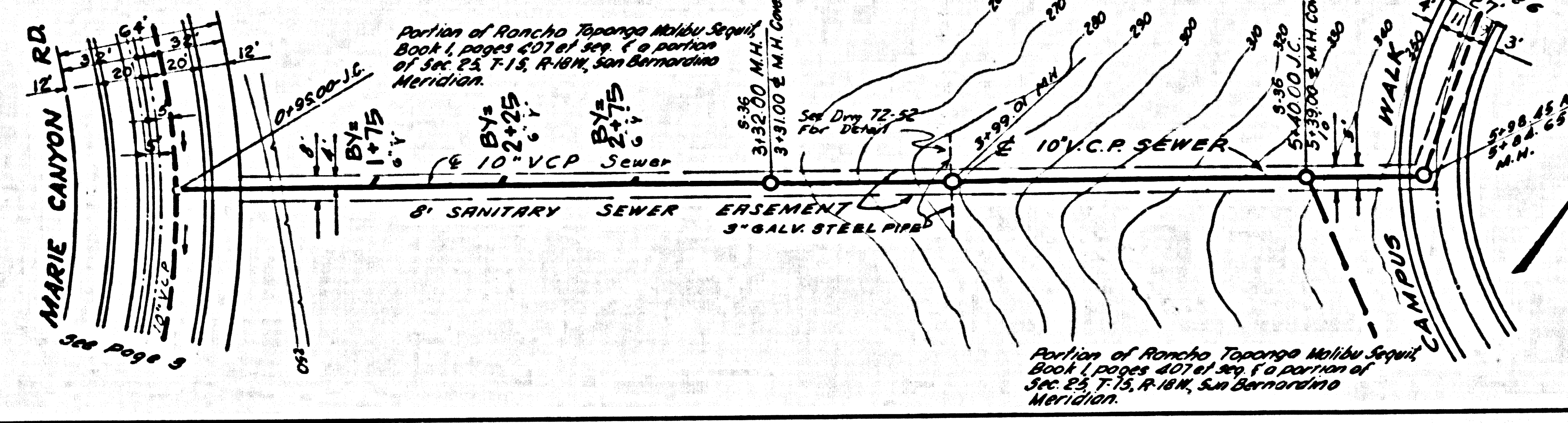




49192



DOUBLE SCALE
NO CHARGE FOR CONNECTIONS
FOR COUNTY OF LOS ANGELES



8677 PAGE 5-A
PRIVATE SEWER
DOUBLE SCALE
NO CHARGE FOR CONNECTIONS
FOR COUNTY OF LOS ANGELES

49193

