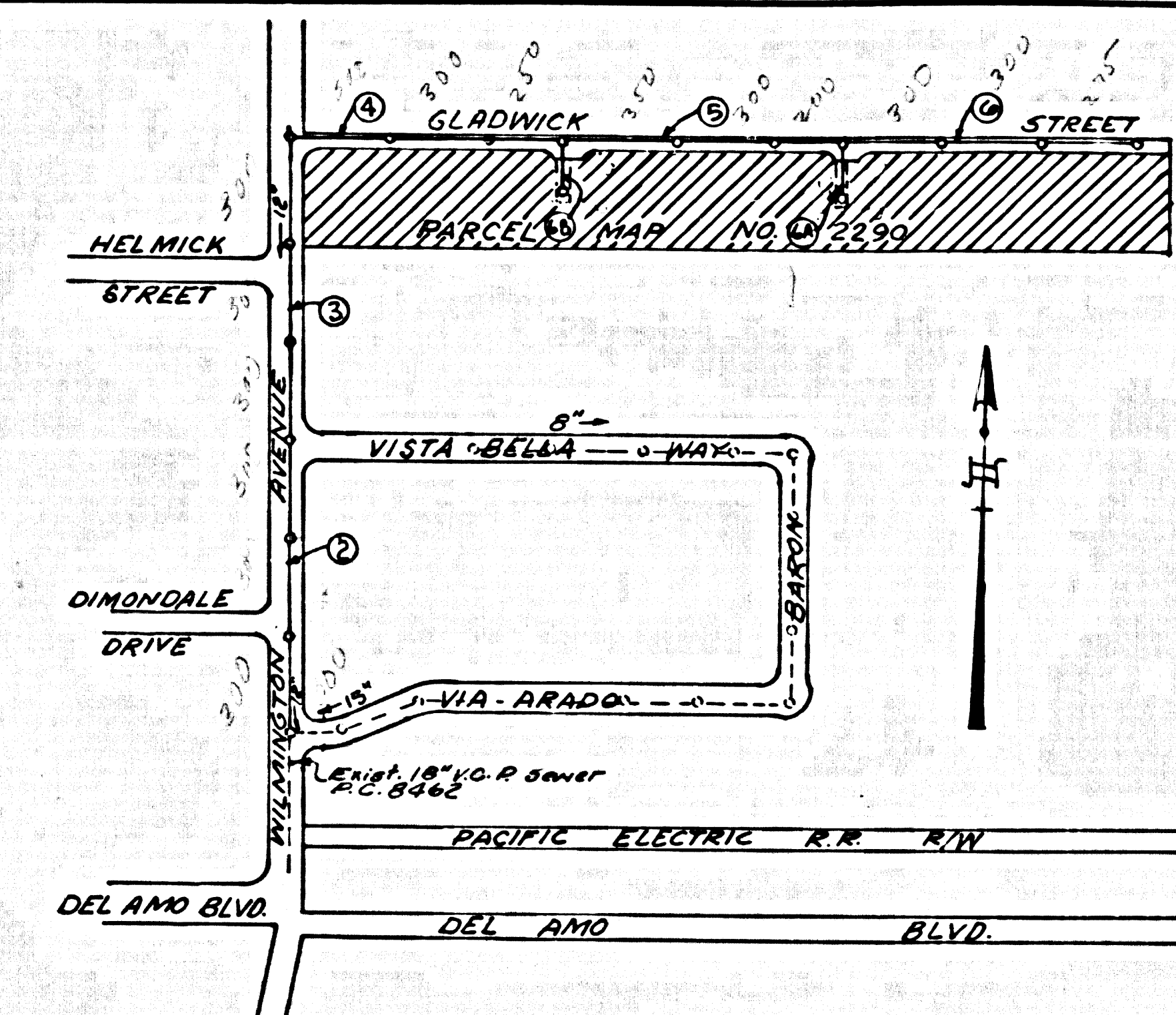


B.M. BY 263 ELEV. 76.800
 Spike in Pymt 18' E of W. Wilmington Avenue 110' S of Helmick Street.
 GARDENA QUAD. 1970

REVISION No. 1
 Revised Grade Sheet to show Page 4 and 5 to include Page 3 to avoid 4" Water Line. Handed C.W. @ 5:00 P.M. and STA 121.81.
 Approved K.C. Murphy 12/14/70
 11/5/70

REVISION No. 2
 Page 2 moved 7' 11" from Sta 9+00 to Sta 9+10 to avoid interference with 6" Water Line.
 Approved K.C. Murphy 11/14/70
 11/14/70



INDEX MAP
 SCALE: 1" = 500'
 P.M. 2290

NOTICE TO CONTRACTOR
 The existence and location of any underground utility pipes or structures shown on these plans is obtained by a search of the available records. To the best of my knowledge there are no existing utilities except as shown on these plans.
 The contractor is required to take all due precautionary measures to protect the utility lines shown and any other lines not of record or not shown on these plans.
 John B. Abell
 JOHN B. ABELL R.C.E. 9070

"Full compliance with Section 306-1.9.3 of the special provisions will be required for backfill in streets. Certification of backfill composition and sand equivalents by a qualified, registered testing laboratory shall be provided by the permittee prior to the issuance of a Certificate of Partial Acceptance."

GENERAL NOTES:

- ELEVATIONS ARE IN FEET ABOVE U.S.C. & G.S. SEA LEVEL DATUM OF THE COUNTY ENGINEER.
 - NO REVISIONS SHALL BE MADE IN THESE PLANS WITHOUT THE APPROVAL OF THE COUNTY ENGINEER.
 - NO REPRESENTATIVE OF THE COUNTY ENGINEER WILL SURVEY OR LAY OUT ANY PORTION OF THE WORK.
 - GRADES TO WHICH THIS IMPROVEMENT IS TO BE CONSTRUCTED ARE SHOWN ON PLANS AND PROFILES. GRADE POINTS FOR TOP OF CURB, CENTER LINE OF STREETS, OR CENTER LINE OF ALLEYS ARE SHOWN BY CIRCLES ON PROFILES. AT ALL POINTS BETWEEN DESIGNATED POINTS THE GRADE SHALL BE ESTABLISHED SO AS TO CONFORM TO A STRAIGHT LINE DRAWN BETWEEN SAID DESIGNATED POINTS.
 - THE PRIVATE ENGINEER SHALL FURNISH THE COUNTY ENGINEER WITH GRADE SHEETS AND STATIONING FOR ALL HOUSE LATERALS AND "T" OR "Y" BRANCHES AND SHALL PROVIDE STAKES FOR THEM AT THEIR PROPER LOCATIONS WITH STATIONING PLAINLY MARKED. ALL HOUSE LATERALS SHALL BE CONSTRUCTED AS A STRAIGHT ALIGNMENT AT RIGHT ANGLES FROM THE MAIN LINE SEWER EXCEPT AS SHOWN ON THE PLANS. HOUSE LATERALS FROM CHIMNEYS SHALL NOT HAVE AN ANGLE OF LESS THAN 45° WITH THE MAIN LINE SEWER. ANY CHANGE IN ALIGNMENT SHALL BE REQUESTED IN WRITING BY THE PRIVATE ENGINEER.
 - THE PRIVATE ENGINEER SHALL FURNISH THE HOUSE LATERAL BIRTH AT THE PROPERTY LINE BELOW THE TOP OF CURB ELEVATION FOR EACH HOUSE LATERAL ON THE GRADE SHEET.
 - BEFORE WORK CAN BE STARTED, THE CONTRACTOR MUST OBTAIN A PERMIT TO EXCAVATE IN COUNTY STREETS FROM THE L.A. COUNTY ROAD DEPT., DISTRICT OFFICE NO. 3, AND PAY A FEE TO THE COUNTY ENGINEER, ROOM P-9, 3150 E. 12th STREET, HUNTSVILLE, CALIFORNIA, OR PALO VERDE - CENTINELA VALLEY REGIONAL OFFICE, TO COVER THE COST OF CONSTRUCTION INSPECTION AND RECORD PLANS.
 - IF WORK IS TO BE DONE IN A STATE HIGHWAY, A PERMIT MUST BE OBTAINED FROM THE STATE OF CALIFORNIA, DIVISION OF HIGHWAYS, 130 SOUTH SPRING STREET, LOS ANGELES, CALIFORNIA.
 - APPROVAL OF THIS PLAN BY THE COUNTY OF LOS ANGELES DOES NOT CONSTITUTE A REPRESENTATION AS TO THE ACCURACY OF THE LOCATION OF OR THE EXISTENCE OR NON-EXISTENCE OF ANY UNDERGROUND UTILITY PIPE, OR STRUCTURE WITHIN THE LIMITS OF THIS PROJECT. THIS NOTE APPLIES TO ALL PAGES.
 - REFER TO SECTION 7-10-4.1 OF THE STANDARD SPECIFICATIONS, REGARDING SAFETY ORDERS.
- County Sanitation Division shall be notified prior to the following so that required inspection can be made (Phone 829-9999 - 538-1111):
 No objections for the disposal of industrial wastes shall be made without written permission from the City Engineer and General Manager of the County Sanitation Division.

CONSTRUCTION NOTES:

- WORK SHALL BE CONSTRUCTED ACCORDING TO THE STANDARD SPECIFICATIONS FOR PUBLIC WORKS CONSTRUCTION (1970 EDITION WITH 1972-1973 SUPPLEMENTS) AND COUNTY ENGINEER SPECIAL PROVISIONS FOR THE CONSTRUCTION OF SANITARY SEWERS DATED April 10, 1972 AND SHALL BE PROSECUTED ONLY IN THE PRESENCE OF THE COUNTY ENGINEER.
- THE CONTRACTOR SHALL NOTIFY THE CONSTRUCTION DIVISION BY TELEPHONE, IN LONDON 9-07, EXT. 8133, AT LEAST TWENTY-FOUR HOURS BEFORE STARTING ANY WORK UNDER THIS CONTRACT.
- HOUSE LATERALS TO BE CONSTRUCTED WITH INVERTS AT PROPERTY LINE 6 FEET BELOW CURB GRADE EXCEPT AS NOTED.
- WYE OR THE BRANCHES MAY BE USED FOR CONNECTIONS TO MAINLINE SEWERS EXCEPT AS NOTED.
- ALL STRUCTURES SHALL BE EITHER BRICK MANHOLES PER 8-2 OR PRECAST CONCRETE MANHOLES PER 8-36, EXCEPT AS NOTED.
- PROVIDE STAKES ON THE PROPERTY LINE OR PROPERTY LINES PRODUCED AT RIGHT ANGLES TO THE SEWER LINE AT THE CENTER LINE OF EACH MANHOLE.
- MANHOLE TOPS IN UNIMPROVED RIGHTS OF WAY TO BE SIX INCHES ABOVE FINISHED GRADE.
- VERTICAL CURVE JOINTS SHALL BE THE "P", "T", OR "M" PER STANDARD SPECIFICATIONS SECTION 808.5.
- IF A POWER POLE IS WITHIN THREE FEET OF THE SEWER, THE SEWER SHALL BE ENCASED, PER 8-23, CASE II, TWO FEET ON EACH SIDE FROM THE POINT OF INTERFERENCE.
- IF DURING THE COURSE OF CONSTRUCTION IT IS DETERMINED THAT THERE IS LESS THAN FOUR FEET OF COVER OVER THE TOP OF A MAIN LINE OR HOUSE LATERAL V.C.P. SEWER WHICH IS NOT INDICATED ON THE PLANS, THE PIPE SHALL BE ENCASED PER 8-23, CASE II UNLESS OTHERWISE APPROVED BY THE COUNTY ENGINEER.
- ALL JOINTS BETWEEN CAST IRON PIPE AND VITRIFIED CLAY PIPE SHALL BE MADE WITH A RUBBER SLEEVE JOINT, TYPE "C" OR "B", WITH BUSHING IF NECESSARY PER STANDARD SPECIFICATIONS, SECTION 306.2.
- SEWERS TO BE TESTED FOR LEAKAGE PER SECTION 306-2.3 OF THE STANDARD SPECIFICATIONS AND SPECIAL PROVISIONS.
- RESURFACE ALL TRENCHES WITHIN PAVED AREAS TO MEET L.A. COUNTY ROAD DEPT. OR CALIFORNIA STATE HIGHWAY REQUIREMENTS IN ACCORDANCE WITH PERMITS.

PROFILE, ALIGNMENT AND GRADE OF
SANITARY SEWERS PAGE 1
 TO BE CONSTRUCTED IN

PARCEL MAP NO. 2290
 PRIVATE CONTRACT NO. 8697

W.S. 26
 3 SHEETS, 6 PAGES
 SCALE: VERT. 1" = 4' HORIZ. 1" = 40'
 DECEMBER, 1971
 PREPARED IN THE OFFICES OF
 JOHN B. ABELL
 5658 N. E. BEVERLY BLVD. LOS ANGELES, CALIFORNIA, 90022
 PHONE: 783-5882
 BY: John B. Abell
 REG. C. E. No. 9070

THE FOLLOWING LATEST REVISED STANDARD PLANS ON FILE IN THE OFFICE OF THE COUNTY ENGINEER SHALL APPLY IN THE CONSTRUCTION OF THIS PROJECT.

LEGEND	8-1
MINIMUM PUBLIC SAFETY REQUIREMENTS	8-2
BRICK MANHOLE	8-3
STANDARD MANHOLE TRIP	8-4
BEDDING FOR SEWER PIPE	8-5
CRADLING AND ENCASEMENT	8-6
WYE OR THE SUPPORT	8-7
ALLOWABLE TRENCH WIDTHS	8-8
LOCKING MANHOLE FRAME AND COVER	8-9
NON-REINFORCED PRECAST CONCRETE MANHOLE	8-36

COUNTY OF LOS ANGELES, CALIFORNIA
 HARVEY T. BRANDT, COUNTY ENGINEER JOHN D. PARKHURST, CHIEF ENGINEER
 APPROVED Robert Walker 6/23/72 APPROVED J. Parkhurst
 REGIONAL ENGINEER DATE OFFICE ENGINEER
 CHECKED Edward J. Walsh 6/23/72
 REG. C. E. No. 10653 DATE
 Dominguez BLDG. DIST. 13 J.N. 0650.05

