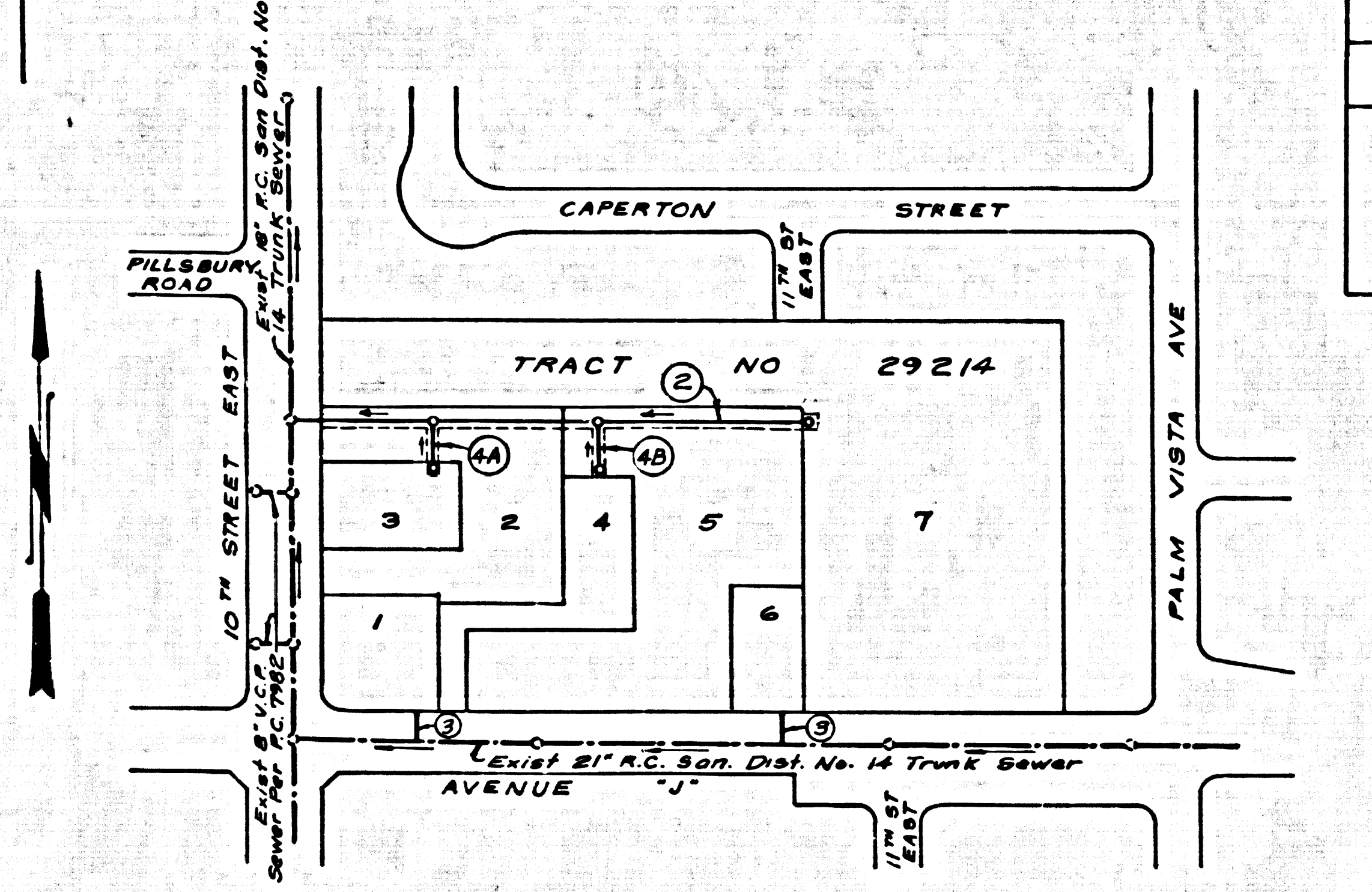


PC 8699

B.M. BL 64 ELEV. 2396.604  
 Co. Sur. Mon. In Well 18" Dia. At E  
 Int. Ave. 11" and 10" W. E. M.R.  
 (Sec. 14, 15, 16, 17, 18, 19, 20, 21, 22, 23, 24 T.T.N. M.R.W.)  
 (W. Edge)  
 Lancaster QUAD. 19 CB



INDEX MAP  
 SCALE: 1" = 200'  
 P.C. 8699

REVISION	DATE
Revised Alignment of mainline - Extended 6" House Lateral on South Side - Sta. 0100 to 0173.00 Page 2	3-21-73
Relocated 10' x 10' easement E'y. of E'y. terminus of mainline - Page 2	3-21-73
Revised Alignment of mainline - Sta. 0100 to 0160.00 Page 4A	3-21-73
Extended H.L. to esm'l. line 0160.00 Page 4A	3-21-73
Revised Alignment of mainline Sta. 0100 to 0163.00 Page 4B	3-21-73
Extended H.L. to esm'l. line Sta. 0160.00 Page 4B	3-21-73

Approved: *L. K. Kopecky* 3/28/72  
 Office of Chief Engineer R.C.E. No. 1674 Date

\*FULL COMPLIANCE WITH SECTION 906-1.9.5 OF THE SPECIAL PROVISIONS WILL BE REQUIRED FOR BACKFILL IN STREETS. CERTIFICATION OF BACKFILL COMPACTION AND SAND EQUIVALENTS BY A QUALIFIED, REGISTERED TESTING LABORATORY SHALL BE PROVIDED BY THE PERMITTEE PRIOR TO THE ISSUANCE OF A CERTIFICATE OF PARTIAL ACCEPTANCE.

ALLOW NO CONNECTIONS WITH EASEMENT HAS BEEN DESIGNATED TO THE COUNTY OF L.A.

COLLECT CHARGES AS INDICATED

LANCASTER BLDG. DIST. NO. 8.0

- NOTE:
- HOUSE LATERALS TO BE CONSTRUCTED WITH INVERTS AT PROPERTY LINE 6 FEET BELOW CURB GRADE EXCEPT AS NOTED.
  - PROVIDE STAKES ON THE PROPERTY LINE OR PROPERTY LINES PRODUCED AT RIGHT ANGLES TO THE SEWER LINE AT THE CENTER LINE OF EACH MANHOLE.
  - NO REPRESENTATIVE OF THE COUNTY ENGINEER WILL SURVEY OR LAY OUT ANY PORTION OF THE WORK.
  - THE PRIVATE ENGINEER SHALL FURNISH THE COUNTY ENGINEER WITH GRADE SHEETS AND STATIONING FOR ALL HOUSE LATERALS AND "T" OR "T" BRANCHES AND SHALL PROVIDE STAKES FOR THEM AT THEIR PROPER LOCATIONS WITH STATIONING PLAINLY MARKED. ALL HOUSE LATERALS SHALL BE CONSTRUCTED IN A STRAIGHT ALIGNMENT AT RIGHT ANGLES FROM THE MAIN LINE SEWER EXCEPT AS SHOWN ON THE PLANS. HOUSE LATERALS FROM CHIMNEYS SHALL NOT HAVE AN ANGLE OF LESS THAN 45° WITH THE MAIN LINE SEWER. ANY CHANGE IN ALIGNMENT SHALL BE REQUESTED IN WRITING BY THE PRIVATE ENGINEER.
  - THE PRIVATE ENGINEER SHALL FURNISH THE HOUSE LATERAL DEPTH AT THE PROPERTY LINE BELOW THE TOP OF CURB ELEVATION FOR EACH HOUSE LATERAL ON THE GRADE SHEET.
  - NO REVISIONS SHALL BE MADE IN THESE PLANS WITHOUT THE APPROVAL OF THE COUNTY ENGINEER.
  - THE CONTRACTOR SHALL NOTIFY THE CONSTRUCTION DIVISION BY TELEPHONE, MARSHALL 2-207, EXT. 8188, AT LEAST TWENTY-FOUR HOURS BEFORE STARTING ANY WORK UNDER THIS CONTRACT.
  - ALL STRUCTURES SHALL BE BUILT ACCORDING TO SECTION 2-2.3 OF THE STANDARD SPECIFICATIONS FOR PUBLIC WORKS CONSTRUCTION (1970 EDITION) WITH "T" OR "T" BRANCHES MAY BE USED FOR CONNECTIONS TO MAINLINE SEWERS EXCEPT AS NOTED.
  - MANHOLE TOPS IN UNIMPROVED PORTS OF WAY TO BE SIX INCHES ABOVE FINISHED GRADE.
  - USE EXTRA STRENGTH PIPE. ALL PIPE IS STANDARD DEPTH EXCEPT AS NOTED.
  - VITRIFIED CLAY PIPE JOINTS SHALL BE TYPE "D", "F", OR "G" PER STANDARD SPECIFICATIONS SECTION 200-2.
  - IF A POWER POLE IS WITHIN THREE FEET OF THE SEWER, THE SEWER SHALL BE ENCASED, PER 2-2.3 TWO FEET ON EACH SIDE FROM THE POINT OF INTERFERENCE.
  - IF DURING THE COURSE OF CONSTRUCTION IT IS DETERMINED THAT THERE IS LESS THAN FOUR FEET OF COVER OVER THE TOP OF A MAIN LINE OR HOUSE LATERAL V.C.P. SEWER WHICH IS NOT INDICATED ON THE PLANS, THE PIPE SHALL BE ENCASED PER 2-2.3, UNLESS OTHERWISE APPROVED BY THE COUNTY ENGINEER.
  - RESURFACE ALL TRENCHES WITHIN FIVE FEET OF THE L.A. COUNTY ROAD DEPT. OR CALIFORNIA STATE HIGHWAY REQUIREMENTS IN ACCORDANCE WITH PERMITS.
  - SEWERS TO BE TESTED FOR LEAKAGE PER SECTION 206-2.3.7 OF THE STANDARD SPECIFICATIONS.
  - REFER TO SECTION 7-14.1.1 OF THE STANDARD SPECIFICATIONS, REGARDING SAFETY OBSTACLE.
  - ALL JOINTS BETWEEN CAST IRON PIPE AND VITRIFIED CLAY PIPE SHALL BE MADE WITH A RUBBER SLEEVE JOINT, TYPE "C" OR "B", WITHIN FINISHING IF NECESSARY PER STANDARD SPECIFICATIONS, SECTION 200-2.
  - THE FOLLOWING LATEST REVISED STANDARD PLANS ON FILE IN THE OFFICE OF THE COUNTY ENGINEER SHALL APPLY IN THE CONSTRUCTION OF THIS PROJECT:

MINIMUM PUBLIC SAFETY REQUIREMENTS	2-1
RICE MANHOLE	2-2
NON-REINFORCED PRECAST CONCRETE MANHOLE	2-3
LOCKING MANHOLE FRAME AND COVER	2-3*
STANDARD MANHOLE STEP	2-3*
BEDDING FOR SEWER PIPE	2-3*
CALLING AND ENCLOSURE	2-3*
TYPE OF THE SUPPORT	2-3*
ALLOWABLE TRENCH WIDTHS	2-3*
CONCRETE PIPE JOINTS	2-3*
County Sanitation Districts shall be notified prior to the following so that required inspection can be made (Phone 337-1025 - 698-1161)	2-7

Core Drilling District trunk sewer.  
 Construction of house connections to District trunk sewer.  
 acceptance at the permittee's expense.

PROFILE, ALIGNMENT AND GRADE OF  
 SANITARY SEWERS P.C. 8699  
 CONSTRUCTED IN PAGE 1

TRACT NO. 29214

PRIVATE CONTRACT NO. 8699

W.S. 70  
 2 SHEETS; 4 PAGES 44178  
 SCALE: VERT. 1" = 4' HORIZ. 1" = 40' FEBRUARY, 1972  
 PREPARED IN THE OFFICES OF  
 P. SOMAS & ASSOCIATES  
 246 So. Robertson Boulevard  
 Beverly Hills, Calif. 91607-2270  
 By: *Timothy Rose* REG. C. E. NO. 17623

NOTE:  
 GRADES TO WHICH THIS IMPROVEMENT IS TO BE CONSTRUCTED ARE SHOWN ON PLANS AND PROFILES. GRADE POINTS FOR TOP OF CURB, CENTER LINE OF DRIVE, OR CENTER LINE OF ALLEY ARE SHOWN BY CIRCLES ON PROFILES. AT ALL POINTS BETWEEN DESIGNATED POINTS THE GRADE SHALL BE ESTABLISHED SO AS TO CONFORM TO A STRAIGHT LINE DRAWN BETWEEN SAID DESIGNATED POINTS. ELEVATIONS ARE IN FEET ABOVE U.S.C. & G.S. MEAN LEVEL DATUM OF 1929.  
 WORK SHALL BE CONSTRUCTED ACCORDING TO THE STANDARD SPECIFICATIONS FOR PUBLIC WORKS CONSTRUCTION (1970 EDITION WITH 1971 SUPPLEMENTS) AND COUNTY ENGINEER'S SPECIAL PROVISIONS FOR THE CONSTRUCTION OF SANITARY SEWERS DATED APRIL 1, 1970 AND SHALL BE PROSECUTED ONLY IN THE PRESENCE OF THE COUNTY ENGINEER.  
 BEFORE WORK CAN BE STARTED, THE CONTRACTOR MUST OBTAIN A PERMIT TO EXCAVATE IN COUNTY STREETS FROM THE L.A. COUNTY ROAD DEPT., DISTRICT OFFICE NO. 25, AND PAY A FEE TO THE COUNTY ENGINEER, 918 1/2 E. IMPERIAL AVENUE, GOVERMENT CENTER, LOS ANGELES, CALIF. 90012. DISTRICT OFFICE, SANITATION DIVISION, COUNTY ENGINEER'S OFFICE, 1000 WEST 1ST STREET, LOS ANGELES, CALIFORNIA.  
 APPROVAL OF THIS PLAN BY THE COUNTY OF LOS ANGELES DOES NOT CONSTITUTE A REPRESENTATION AS TO THE ACCURACY OF THE LOCATION OF OR THE EXISTENCE OR NON-EXISTENCE OF ANY UNDERGROUND UTILITY PIPE, OR STRUCTURE WITHIN THE LIMITS OF THE PROJECT. THIS NOTE APPLIES TO ALL AGES.  
 IF WORK IS TO BE DONE IN A STATE HIGHWAY, A PERMIT MUST BE OBTAINED FROM THE STATE OF CALIFORNIA, DIVISION OF HIGHWAYS, 170 SOUTH BRIDGE STREET, LOS ANGELES, CALIFORNIA.

COUNTY OF LOS ANGELES, CALIFORNIA  
 HARVEY T. BRANDT, COUNTY ENGINEER J. D. PARKHURST, CHIEF ENGINEER  
 APPROVED BY *[Signature]* APPROVED BY *[Signature]*  
 REGIONAL ENGINEER DATE OFFICE ENGINEER  
 CHECKED BY *L. K. Kopecky* 4/1/72  
 REG. C. E. NO. 16742

J.N. 0250.02

