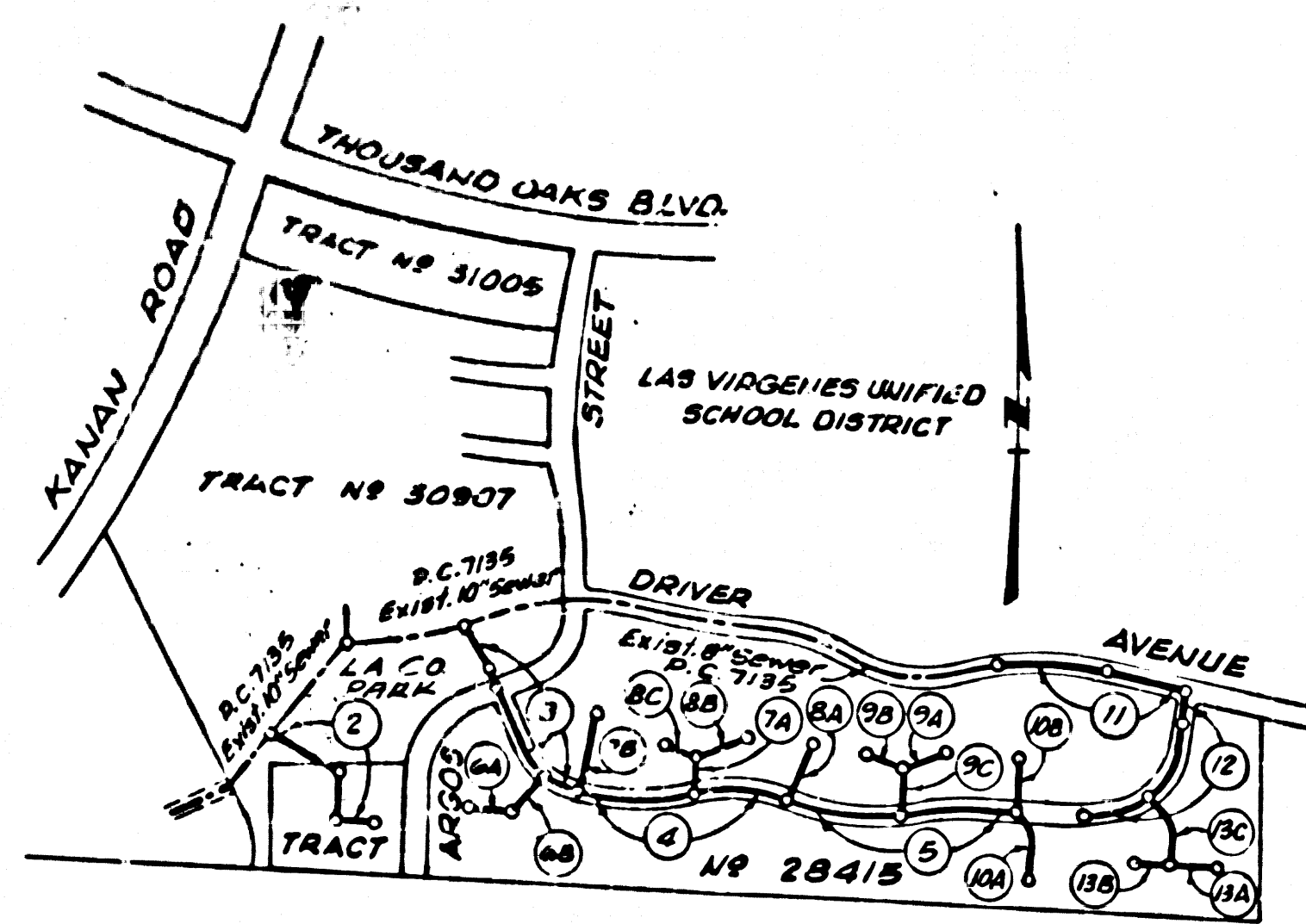


B.M. BY 7552 ELEV. 894.107
 RDBM TAG 1 FT. N BCR NE COR KANAN
 RD & CANWOOD ST. 60 FT. N 8 40 FT.
 E & INT. 250 FT. N BRIDGE 53-945
 OVER VENTURA FWY.
 MALIBU QUAD. 19 65.



Figures in circles indicate page numbers
 Note: All Sewers are 8" V.C.P.

INDEX MAP
 SCALE 1"=400'
 P.C. 8700

- M. Special Backfill in Designated Areas**
 a. Backfill trench and replace other earth removed so as to achieve the natural or finished grades and slopes shown on the Grading Plan approved for this tract by the Building and Safety Division.
 b. All backfill and earth replaced shall be compacted to a minimum of 90% of maximum density per A.S.T.M. Standard Method of Test D 638-57T as modified. Acceptable certification of such compaction shall be submitted to the Construction Division.
 15. Full compliance with Section 306-1.9.3 of the Special Provisions will be required for backfill in streets. Certification of backfill compaction and sand equivalents by a qualified registered testing laboratory shall be provided by the permittee prior to the issuance of a Certificate of Partial Acceptance.

GENERAL NOTES:

- ELEVATIONS ARE IN FEET ABOVE U.S.C. & G.S. SEA LEVEL DATUM OF 1929.
- NO REVISIONS SHALL BE MADE IN THESE PLANS WITHOUT THE APPROVAL OF THE COUNTY ENGINEER.
- NO REPRESENTATIVE OF THE COUNTY ENGINEER WILL SURVEY OR LAY OUT ANY PORTION OF THE WORK.
- GRADES TO WHICH THIS IMPROVEMENT IS TO BE CONSTRUCTED ARE SHOWN ON PLANS AND PROFILES. GRADE POINTS FOR TOP OF CURB, CENTER LINE OF STREETS, OR CENTER LINE OF ALLEYS ARE SHOWN BY CIRCLES ON PROFILES AT ALL POINTS BETWEEN DESIGNATED POINTS. THE GRADE SHALL BE ESTABLISHED SO AS TO CONFORM TO A STRAIGHT LINE DRAWN BETWEEN SAID DESIGNATED POINTS.
- THE PRIVATE ENGINEER SHALL FURNISH THE COUNTY ENGINEER WITH GRADE SHEETS AND STATIONING FOR ALL HOUSE LATERALS AND "T" OR "Y" BRANCHES AND SHALL PROVIDE STAKES FOR THEM AT THEIR PROPER LOCATIONS WITH STATIONING PLAINLY MARKED. ALL HOUSE LATERALS SHALL BE CONSTRUCTED BY A STRAIGHT ALIGNMENT AT RIGHT ANGLES FROM THE MAIN LINE SEWER EXCEPT AS SHOWN ON THE PLANS. HOUSE LATERALS FROM CHIMNEYS SHALL NOT HAVE AN ANGLE OF LESS THAN 45° WITH THE MAIN LINE SEWER. ANY CHANGE IN ALIGNMENT SHALL BE REQUESTED IN WRITING BY THE PRIVATE ENGINEER.
- THE PRIVATE ENGINEER SHALL FURNISH THE HOUSE LATERAL DEPTH AT THE PROPERTY LINE BELOW THE TOP OF CURB ELEVATION FOR EACH HOUSE LATERAL ON THE GRADE SHEET.
- BEFORE WORK CAN BE STARTED, THE CONTRACTOR MUST OBTAIN A PERMIT TO EXCAVATE IN COUNTY STREETS FROM THE L. A. COUNTY ROAD DEPT., DISTRICT OFFICE NO. 3, AND PAY A FEE TO THE COUNTY ENGINEER.
 AT THEIR HEADQUARTERS REGIONAL OFFICE, TO COVER THE COST OF CONSTRUCTION INSPECTION AND RECORD PLANS.
- IF WORK IS TO BE DONE IN A STATE HIGHWAY, A PERMIT MUST BE OBTAINED FROM THE STATE OF CALIFORNIA, DIVISION OF HIGHWAYS, 120 SOUTH SPRING STREET, LOS ANGELES, CALIFORNIA.
- APPROVAL OF THIS PLAN BY THE COUNTY OF LOS ANGELES DOES NOT CONSTITUTE A REPRESENTATION AS TO THE ACCURACY OF THE LOCATION OF OR THE EXISTENCE OR NON-EXISTENCE OF ANY UNDERGROUND UTILITY PIPE, OR STRUCTURE WITHIN THE LIMITS OF THIS PROJECT. THE NOTE APPLIES TO ALL PAGES.
- REFER TO SECTION 218.4.2 OF THE STANDARD SPECIFICATIONS, REGARDING SAFETY ORDERS.

PROFILE, ALIGNMENT AND GRADE OF
SANITARY SEWERS PAGE 1

TO BE CONSTRUCTED IN
TRACT No. 28415
PRIVATE CONTRACT NO. 8700

W.S. 90
 7 SHEETS, 13 PAGES
 SCALE: VERT. 1"=4'
 HORIZ. 1"=40'
 JUNE, 1972
 PREPARED IN THE OFFICES OF
C F BRAUN & CO ENGINEERS
 ALHAMBRA, CALIFORNIA
 BY: *Richard C. Braun*
 REG. C. E. No. 14394

43748

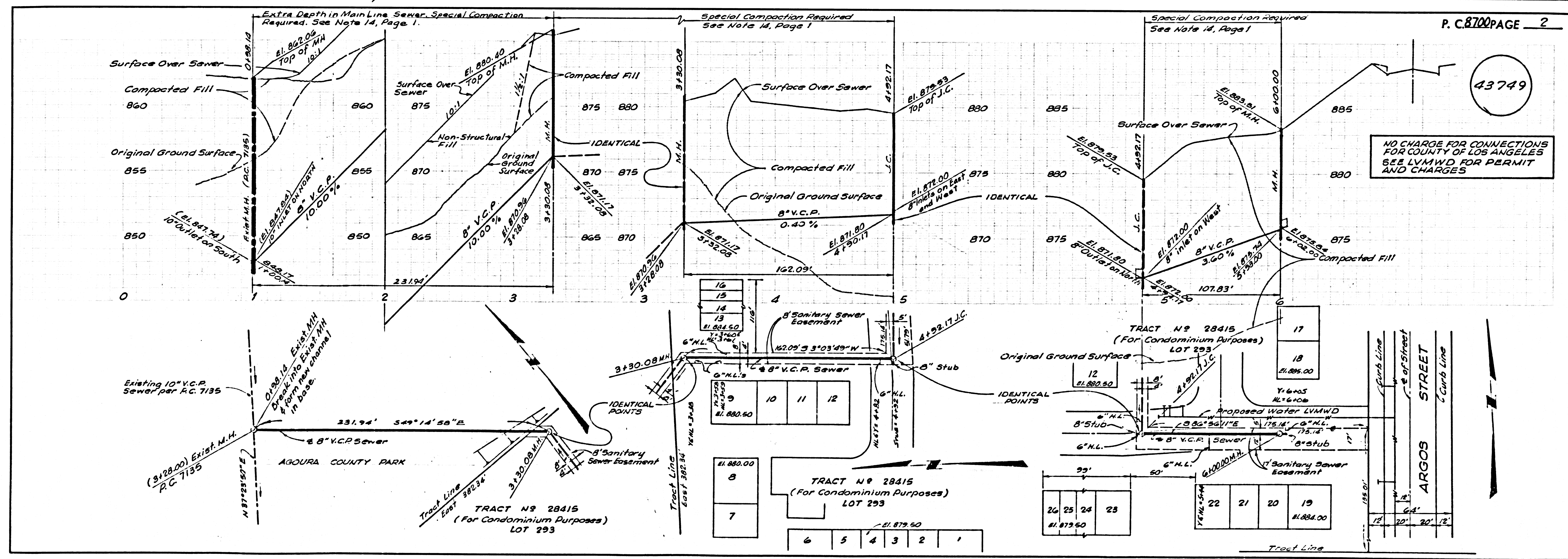
THE FOLLOWING LATEST REVISED STANDARD PLANS ON FILE IN THE OFFICE OF THE COUNTY ENGINEER SHALL APPLY IN THE CONSTRUCTION OF THIS PROJECT.

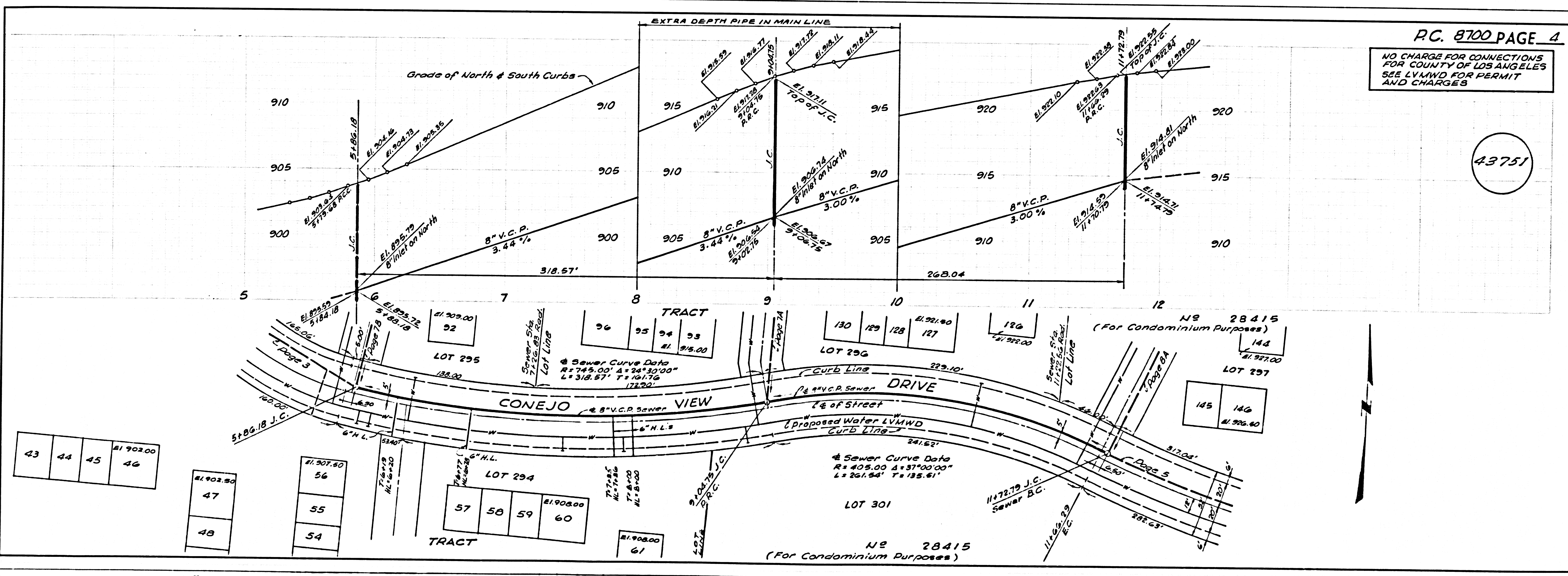
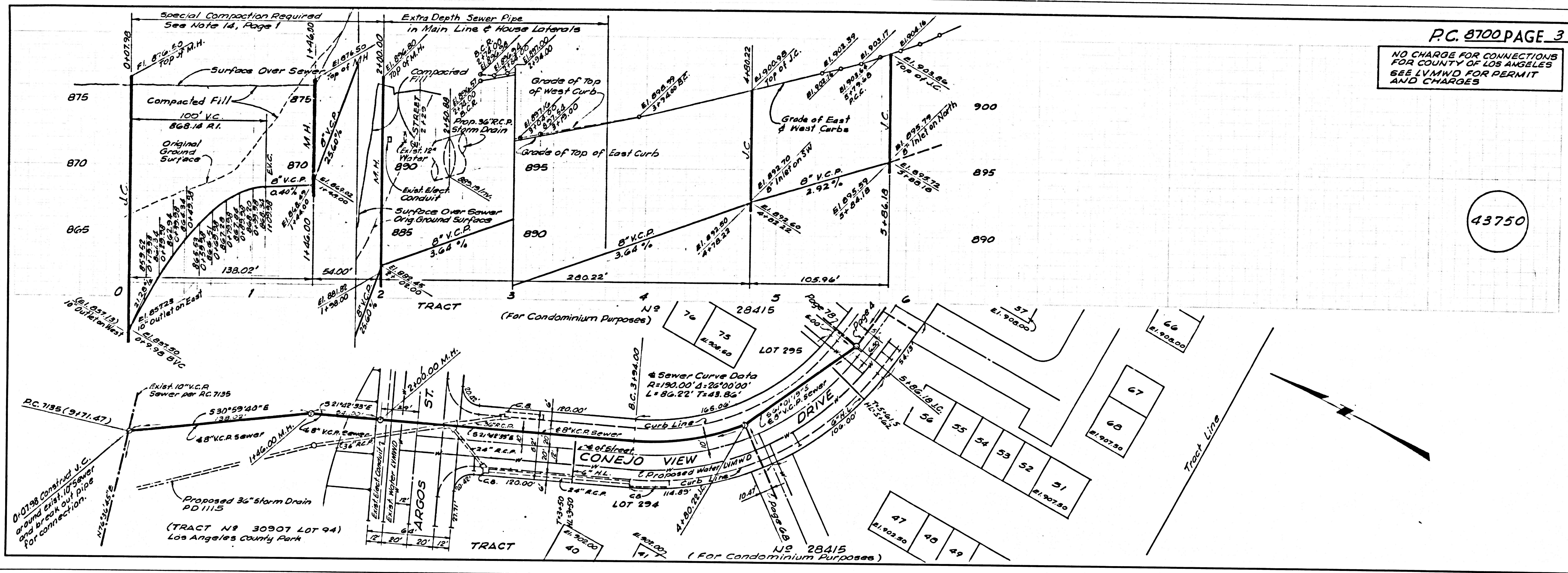
LEGEND	2-1
MINIMUM PUBLIC SAFETY REQUIREMENTS	2-2
BRICK MANHOLE	2-3
STANDARD MANHOLE STEP	2-7
READING FOR SEWER PIPE	2-21
CRADLING AND EMBASEMENT	2-23
WYE ON THE SUPPORT	2-24
LOCKING MANHOLE FRAME AND COVER	2-26
NON-REINFORCED PRECAST CONCRETE MANHOLE	2-26

CONSTRUCTION NOTES:

- WORK SHALL BE CONSTRUCTED ACCORDING TO THE STANDARD SPECIFICATIONS FOR PUBLIC WORKS CONSTRUCTION 1970 EDITION WITH 1971 SUPPLEMENTS AND COUNTY ENGINEER SPECIAL PROVISIONS FOR THE CONSTRUCTION OF SANITARY SEWERS DATED 2/25/71. ALL SHALL BE PROSECUTED ONLY IN THE PRESENCE OF THE COUNTY ENGINEER.
- THE CONTRACTOR SHALL NOTIFY THE CONSTRUCTION DIVISION BY TELEPHONE, MAIL OR IN WRITING, AT LEAST TWENTY-FOUR HOURS BEFORE STARTING ANY WORK UNDER THIS CONTRACT.
- HOUSE LATERALS TO BE CONSTRUCTED WITH INVERTS AT PROPERTY LINE A FEET BELOW CURB GRADE EXCEPT AS NOTED.
- WYE OR TEE BRANCHES MAY BE USED FOR CONNECTIONS TO MANHOLE SEWERS EXCEPT AS NOTED.
- ALL STRUCTURES SHALL BE EITHER BRICK MANHOLES PER 2-3 OF PRECAST CONCRETE MANHOLES PER 2-26, EXCEPT AS NOTED.
- PROVIDE STAKES ON THE PROPERTY LINE OR PROPERTY LINES PRODUCE AT RIGHT ANGLES TO THE SEWER LINE AT THE CENTER LINE OF EACH MANHOLE.
- MANHOLE TOPS IN UNIMPROVED RIGHTS OF WAY TO BE SIX INCHES ABOVE FINISHED GRADE, AND LEVEL WITH UNIMPROVED GRADE.
- VITRIFIED CLAY PIPE JOINTS SHALL BE TYPE "B", "P", OR "D" PER STANDARD SPECIFICATIONS SECTION 208-2.
- IF A POWER POLE IS WITHIN THREE FEET OF THE SEWER, THE SEWER SHALL BE ENCASED, PER 2-25, CASE II, TWO FEET ON EACH SIDE FROM THE POINT OF INTERFERENCE.
- IF DURING THE COURSE OF CONSTRUCTION IT IS DETERMINED THAT THERE IS LESS THAN FOUR FEET OF COVER OVER THE TOP OF A MAIN LINE OR HOUSE LATERAL V.C.P. SEWER WHICH IS NOT INDICATED ON THE PLANS, THE PIPE SHALL BE ENCASED PER 2-25, CASE II UNLESS OTHERWISE APPROVED BY THE COUNTY ENGINEER.
- ALL JOINTS BETWEEN CAST IRON PIPE AND VITRIFIED CLAY PIPE SHALL BE MADE WITH A RUBBER SLEEVE JOINT, TYPE "C" OR "D", WITHIN BRANCHING IF NECESSARY PER STANDARD SPECIFICATIONS, SECTION 208-2.
- REVISIONS TO BE MADE TO THESE PLANS SHALL BE IN ACCORDANCE WITH SECTION 208-2 OF THE STANDARD SPECIFICATIONS AND SPECIAL PROVISIONS.
- RESURFACE ALL TRENCHES WITHIN PAVED AREAS TO MEET L.A. COUNTY ROAD DEPT. OR CALIFORNIA STATE HIGHWAY REQUIREMENTS IN ACCORDANCE WITH PERMITS.

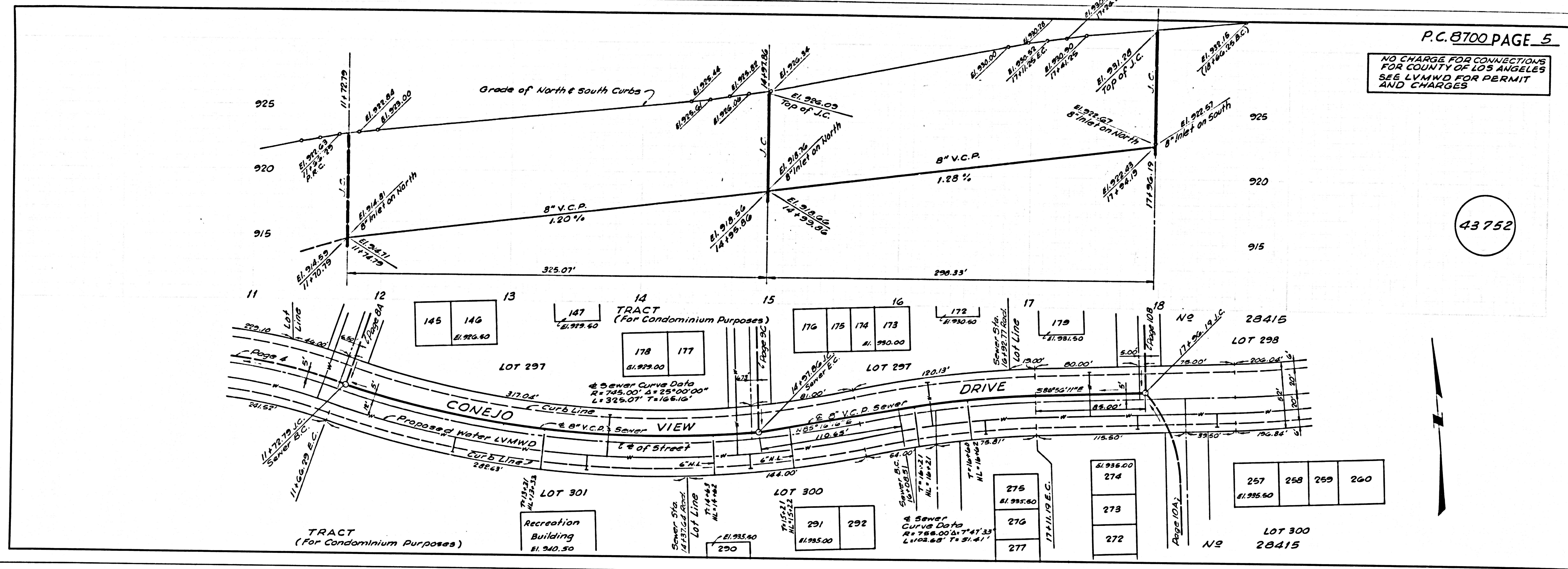
COUNTY OF LOS ANGELES, CALIFORNIA
 HARVEY T. BRANDT, COUNTY ENGINEER LAS VIRGENES MUNICIPAL WATER DISTRICT
 APPROVED *Harvey T. Brandt* 8/11/72 REGIONAL ENGINEER DATE
 APPROVED *Harvey T. Brandt* 8/11/72 GENERAL MANAGER DATE
 CHECKED *Harvey T. Brandt* 8/11/72 DATE
 REG. C. E. NO. 17722
 CALABASAS BLDG. DIST. 9.1 J.N. 0250.02





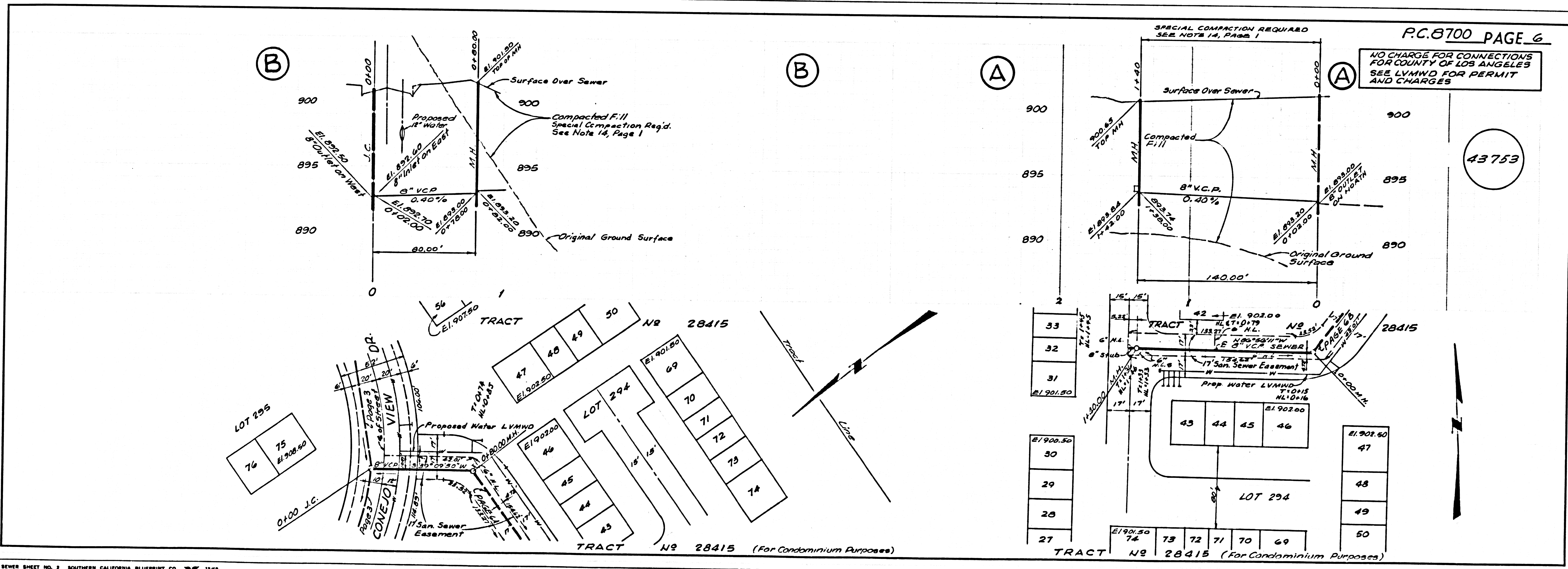
NO CHARGE FOR CONNECTIONS FOR COUNTY OF LOS ANGELES SEE LVMWD FOR PERMIT AND CHARGES

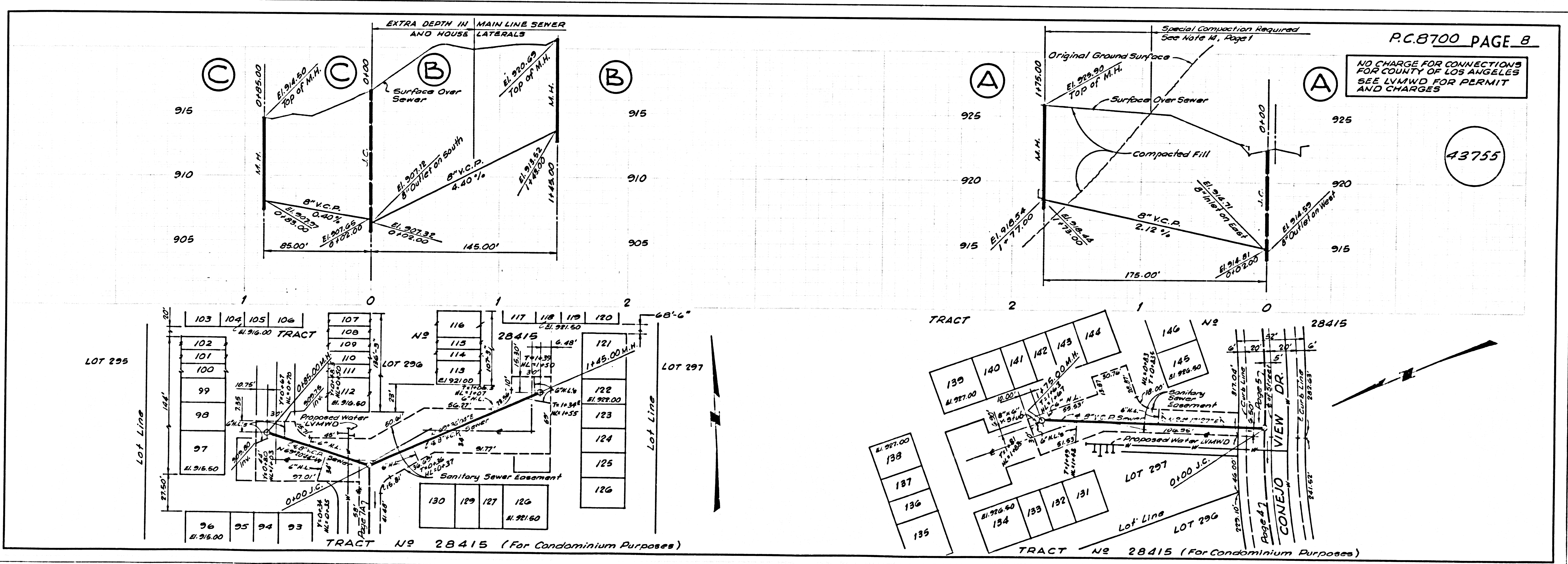
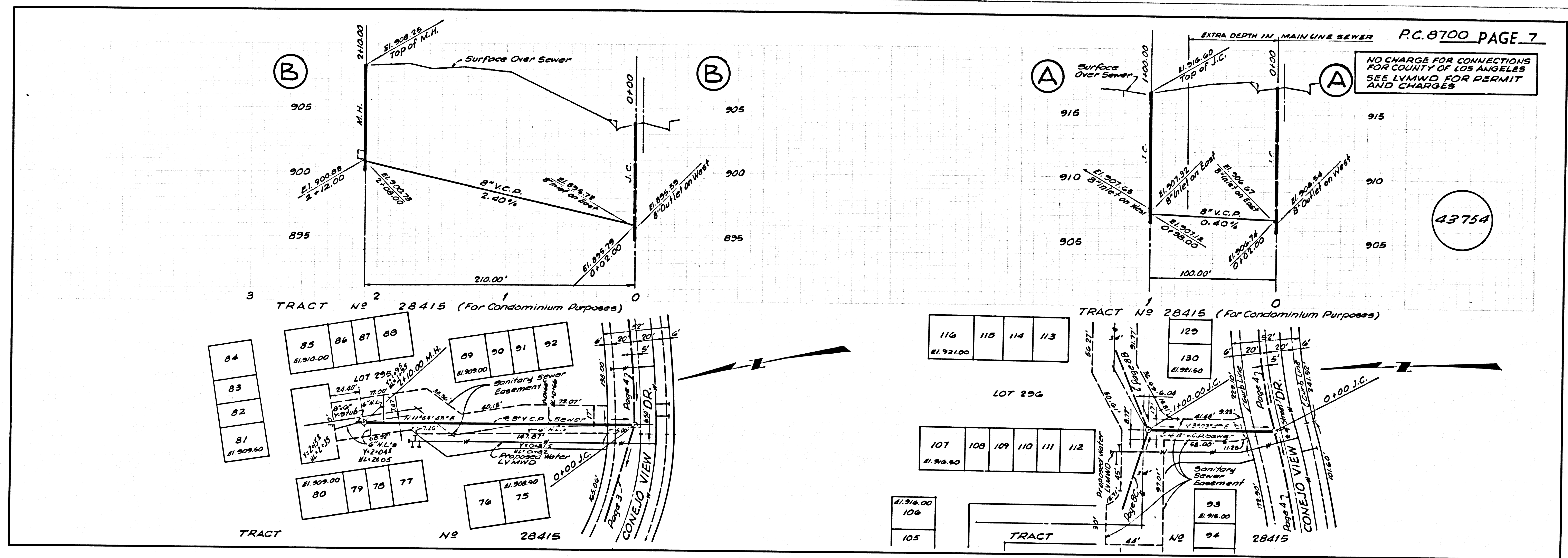
43752

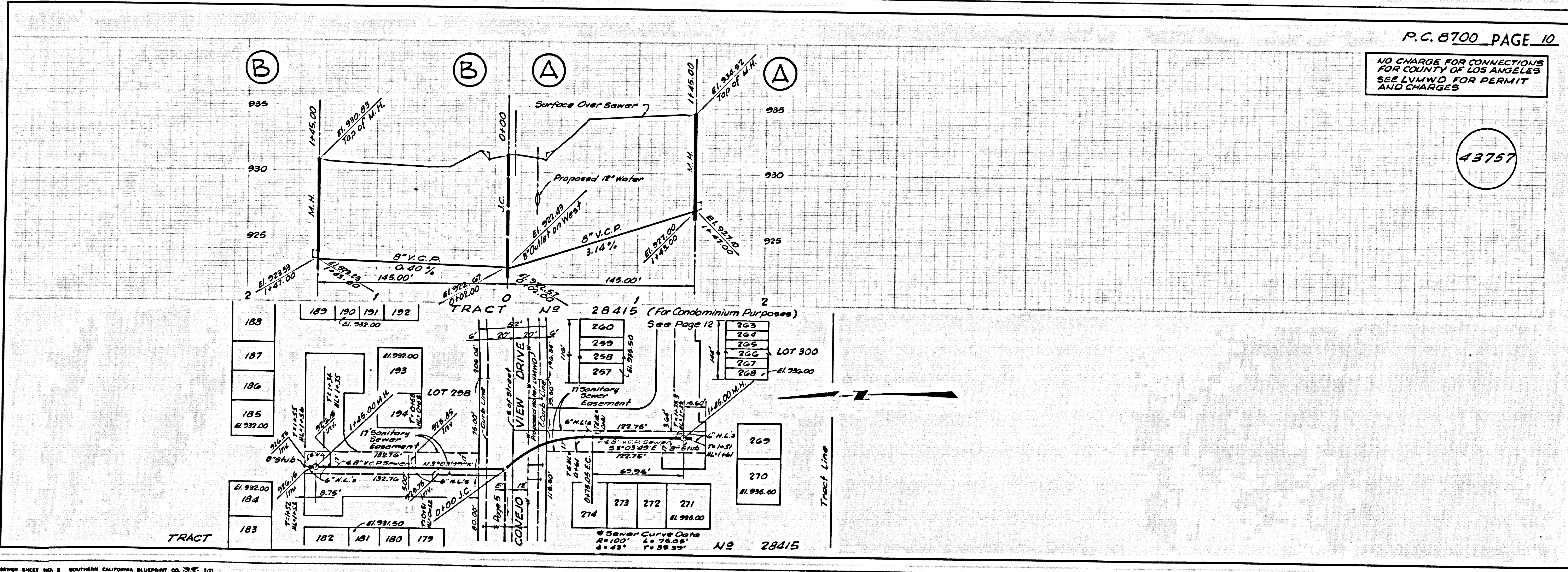
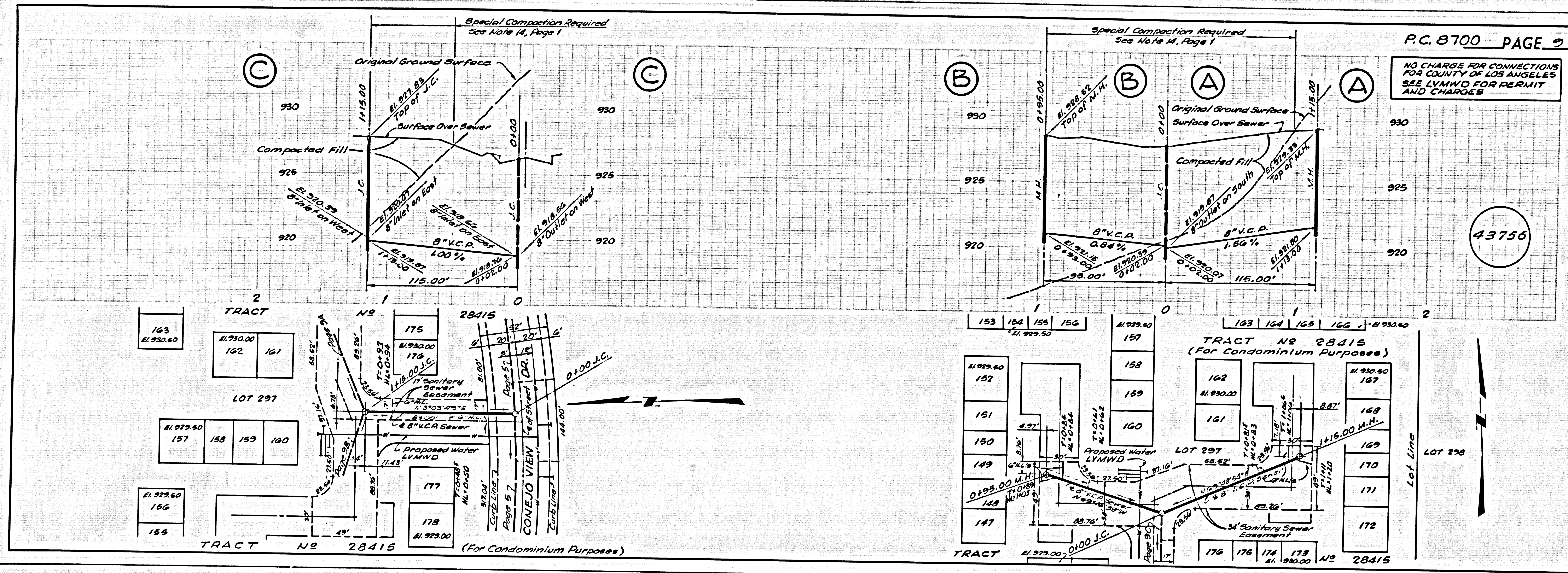


NO CHARGE FOR CONNECTIONS FOR COUNTY OF LOS ANGELES SEE LVMWD FOR PERMIT AND CHARGES

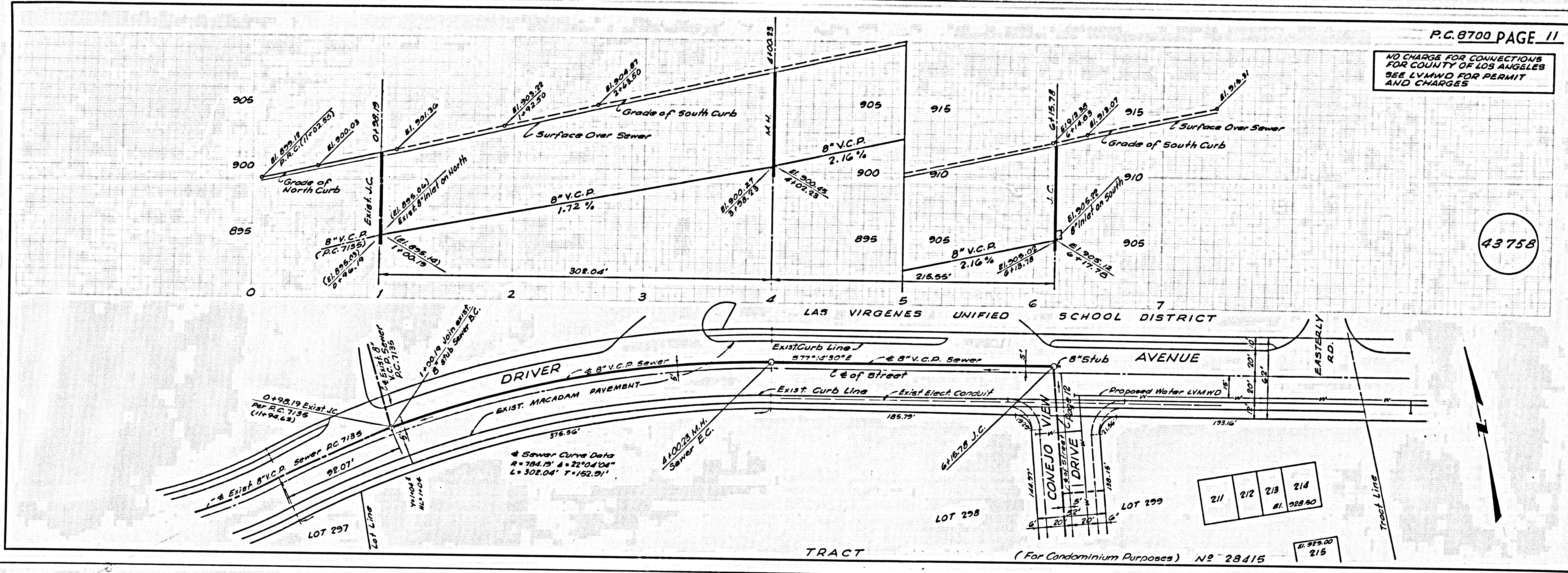
43753



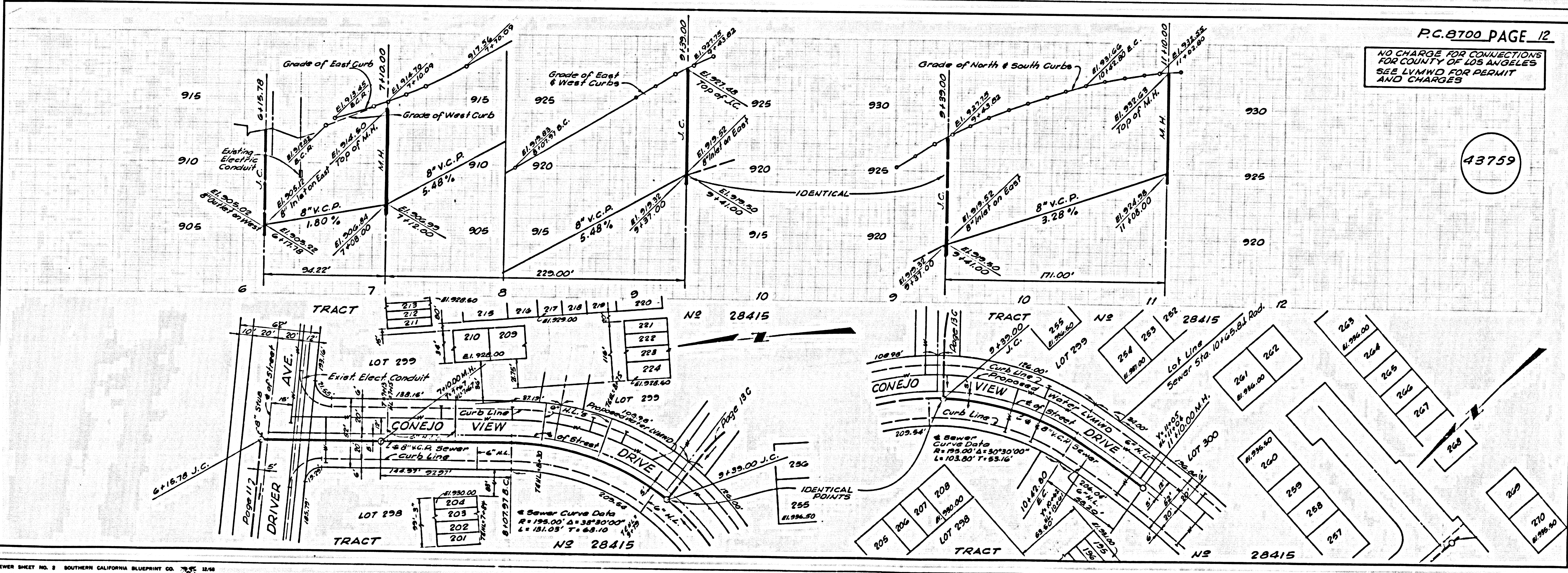




NO CHARGE FOR CONNECTIONS FOR COUNTY OF LOS ANGELES SEE LVMWD FOR PERMIT AND CHARGES



NO CHARGE FOR CONNECTIONS FOR COUNTY OF LOS ANGELES SEE LVMWD FOR PERMIT AND CHARGES



NO CHARGE FOR CONNECTIONS FOR COUNTY OF LOS ANGELES SEE LVMWD FOR PERMIT AND CHARGES

43760

