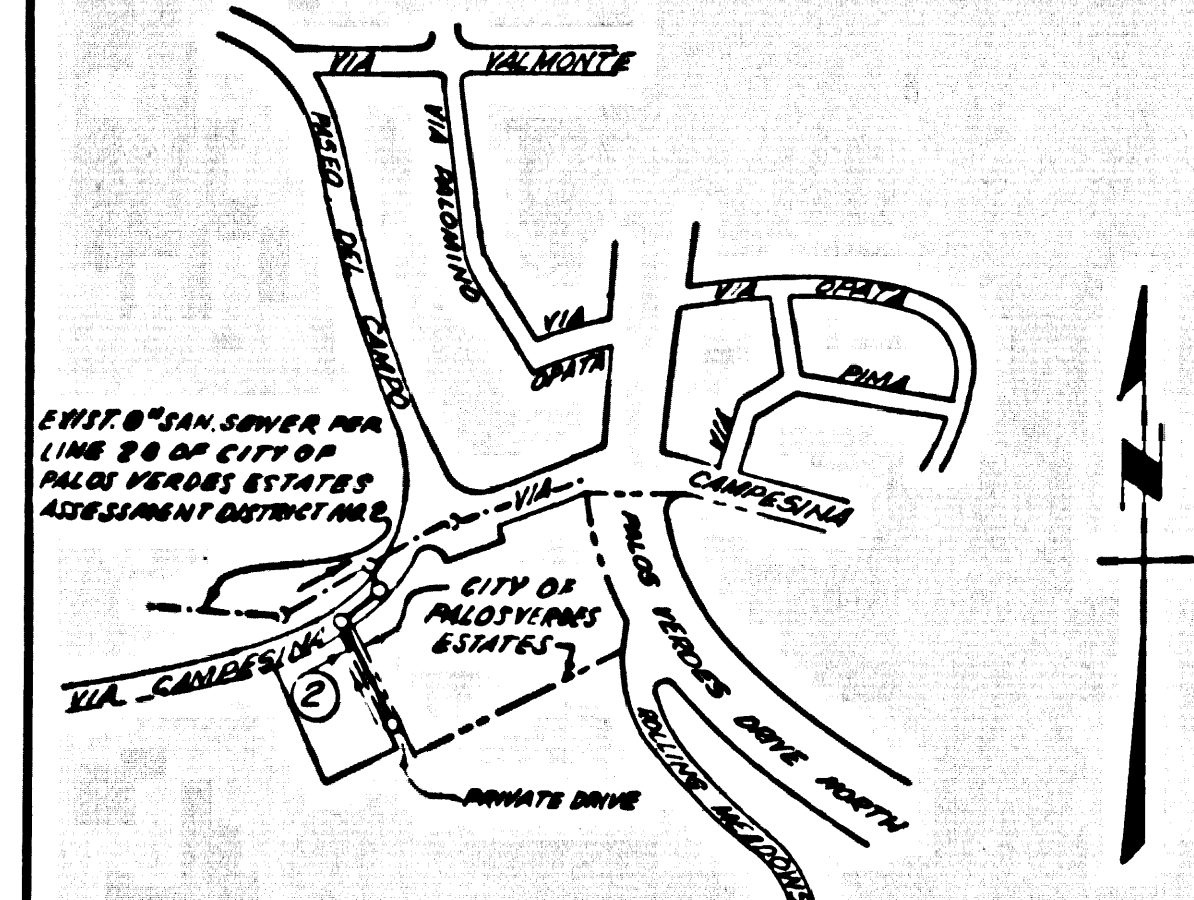


B.M. 49-2 ELEV. 486.722 C.E.F.R. 1373 R. 8
 THIS POINT OBEYS HOOD & ROLLING MEADOWS ROAD AT THE S.M.
 ON 15.3 FEET SOUTH OF THE SOUTH END OF CURB RETURN AND
 1.0 FEET WEST OF THE CORNER SET ON THE TOP OF A 12 INCH
 SQUARE CONCRETE POST FLUSH WITH THE GROUND
 PALOS VERDES QUAD. 19.70

CONSTRUCTION BENCH MARK

5" IRON PIPE @ S.C. ON SOUTH SIDE VIA CAMPESINA AT STA.
 28+42.15 HERE CITY OF PALOS VERDES ESTATES STREET
 IMPROVEMENT PLANS VIA CAMPESINA FROM STA. 28+13.50 TO
 STA. 28+41.57
 ELEV. 509.45

NOTE:
 ADJUSTMENT TO LOS ANGELES COUNTY ENGINEERS BENCH
 MARKS SUBTRACT 4.20 TO ALL ELEV. SHOWN HEREON



INDEX MAP
 SCALE: 1"=600'
 P.M. 1865

THE FOLLOWING LATEST REVISION STANDARD PLANS ON FILE IN THE OFFICE OF THE
 CITY ENGINEER SHALL APPLY IN THE CONSTRUCTION OF THIS PROJECT

LEGEND

MINIMUM PUBLIC SAFETY REQUIREMENTS	5-1
BRICK MANHOLE	5-2
STANDARD MANHOLE STEP	5-3
RESOLVER FOR SEWER DUNE	5-17
CRADLING AND ENCASEMENT	5-21
WIRE ON TEE SUPPORT	5-23
ALLOWABLE TRENCH WIDTHS	5-25
LOCKING MANHOLE FRAMES AND COVER	5-28
NON-REINFORCED PRECAST CONCRETE MANHOLE	5-34

**PRIVATE ENGINEER'S
 NOTICE TO CONTRACTOR**

THE EXISTENCE AND LOCATION OF ANY UNDERGROUND UTILITY PIPES
 OR STRUCTURES SHOWN ON THESE PLANS ARE OBTAINED BY A SEARCH
 OF THE AVAILABLE RECORDS. TO THE BEST OF OUR KNOWLEDGE
 THERE ARE NO EXISTING UTILITIES EXCEPT AS SHOWN ON THIS PLAN.
 THE CONTRACTOR IS REQUIRED TO TAKE PRECAUTIONARY MEASURES
 TO PROTECT THE UTILITY LINES SHOWN AND ANY OTHER LINES
 NOT OF RECORD OR NOT SHOWN ON THIS DRAWING.

County Sanitation District shall be
 notified prior to the following as
 that required licensing can be made
 (Phone 337-1025 - 638-1181)
 Acceptance of this plan:

No construction for the disposal of
 industrial wastes shall be made to
 sewer shown on these drawings
 without written permission from the
 Chief Engineer and Deputal Engineer
 of the County Sanitation District.

DOUBLE SCALE
 RANCHO PALOS VERDES BLDG. DIST. NO. 12.06

PROFILE ALIGNMENT AND GRADE OF
 SANITARY SEWERS P.C. 8701
 TO BE CONSTRUCTED IN PAGE 1

PARCEL MAP NO 1865
 CITY OF RANCHO PALOS VERDES
 PRIVATE CONTRACT NO. 8701

W.S. 27
 1 SHEET OF 2 PAGES
 SCALE: HORIZ. 1"=40' VERT. 1"=4'
 JANUARY 1972
 PREPARED IN THE OFFICE OF
 ENGINEERING SERVICE CORPORATION
 1127 W. WASHINGTON BLVD.
 LOS ANGELES, CALIFORNIA
 J.E. HERRVILLE REG. C.E. NO. 13028

FOR LEGEND SEE PLAN NO. S-1

NOTE:
 GRADES TO WHICH THE IMPROVEMENT IS TO BE CONSTRUCTED ARE SHOWN ON PLANS AND PROFILES. GRADE POINTS FOR TOP OF
 CURB, CENTER LINE OF STREET, OR CENTER LINE OF ALLEY ARE SHOWN BY CIRCLES ON PROFILES AT ALL POINTS BETWEEN DESIGNATED
 POINTS THE GRADE SHALL BE ESTABLISHED TO BE TO CORRESPOND TO A STRAIGHT LINE DRAWN BETWEEN SAID DESIGNATED POINTS.
 ELEVATIONS ARE IN FEET ABOVE U.T.C. & G.S. SEA LEVEL DATUM OF 1929
 THIS DRAWING AND THE DATA HEREON ARE HEREBY MADE A PART OF THE SPECIFICATIONS
 WHICH SHALL BE CONSIDERED ACCORDING TO THE STANDARD SPECIFICATIONS FOR HIGHWAY CONSTRUCTION OF THE STATE OF CALIFORNIA
 WITH ANY SUPPLEMENTARY AND CITY ENGINEER'S ORDINANCES AND THE SPECIFICATIONS OF THE SANITATION DISTRICT OF PALOS VERDES
 WHICH HAVE BEEN ADOPTED BY THE BOARD OF SUPERVISORS OF THE CITY OF RANCHO PALOS VERDES, CALIFORNIA
 APPROVAL OF THIS PLAN BY THE CITY OF RANCHO PALOS VERDES, CALIFORNIA, DOES NOT CONSTITUTE A REPRESENTATION AS TO THE ACCURACY OF THE
 LOCATION OF OR THE EXISTENCE OR NON-EXISTENCE OF ANY UNDERGROUND UTILITY PIPES OR STRUCTURES WITHIN THE LIMITS OF THIS
 PROJECT. THE CONTRACTOR SHALL BE RESPONSIBLE FOR OBTAINING ALL NECESSARY PERMITS FROM THE STATE OF CALIFORNIA, DIVISION OF HIGHWAY
 AND THE COUNTY OF PALOS VERDES, CALIFORNIA, PRIOR TO THE COMMENCEMENT OF CONSTRUCTION.

- NOTES:
1. PROFILE STATIONS ON THE PROPERTY LINE OR PROPERTY LINES PRODUCED AT RIGHT ANGLES TO THE SEWER LINE AT THE CENTER LINE OF EACH MANHOLE.
 2. NO REPRESENTATIVE OF THE CITY ENGINEER WILL SURVEY OR LAY OUT ANY PORTION OF THE WORK.
 3. THE PRIVATE ENGINEER SHALL FURNISH THE CITY ENGINEER WITH GRADE SHEETS AND STATIONING FOR ALL HOUSE LATERALS AND ALL "T" BRANCHES AND SHALL PROVIDE STAKES FOR THEM AT THEIR PROPER LOCATIONS WITH STATIONING PLAINS MARKED. ALL HOUSE LATERALS SHALL BE CONSTRUCTED IN A STRAIGHT ALIGNMENT AT RIGHT ANGLES FROM THE MAIN LINE SEWER EXCEPT AS SHOWN ON THE PLANS. HOUSE LATERALS FROM CHIMNEYS SHALL NOT HAVE AN ANGLE OF LESS THAN 45° WITH THE MAIN LINE SEWER. ANY CHANGE IN ALIGNMENT SHALL BE REQUESTED IN WRITING BY THE PRIVATE ENGINEER.
 4. THE PRIVATE ENGINEER SHALL FURNISH THE HOUSE LATERAL DEPTH AT THE PROPERTY LINE BELOW THE TOP OF CURB ELEVATION FOR EACH HOUSE LATERAL ON THE GRADE SHEET.
 5. NO REVISIONS SHALL BE MADE IN THESE PLANS WITHOUT THE APPROVAL OF THE CITY ENGINEER.
 6. THE CONTRACTOR SHALL NOTIFY THE CONSTRUCTION DIVISION BY TELEPHONE, HARBOR 7-4747, EXT. 8138, AT LEAST TWENTY-FOUR HOURS BEFORE STARTING ANY WORK UNDER THIS CONTRACT.
 7. ALL STRUCTURES SHALL BE BUILT BRICK MANHOLES PER S-2 ON PRECAST CONCRETE MANHOLES PER S-26, EXCEPT AS SHOWN.
 8. USE STANDARD MANHOLE FRAMES AND COVERS 24" IN DIAMETER AS SHOWN.
 9. MANHOLE TOPS IN UNIMPROVED AREAS SHALL BE TO BE THE SAME AS ABOVE PRESCRIBED GRADE.
 10. USE EXTRA STRENGTH PIPE ALL PIPE IN STANDARD DEPTH EXCEPT AS NOTED.
 11. STANDARD GRADE PIPE SHALL BE 12" DIA. 40' MIN. STRENGTH SPECIFICATION S.P.C. S-28 - B.
 12. IF A POWER POLE IS WITHIN THREE FEET OF THE SEWER, THE SEWER SHALL BE ENCASED, PER S-25, TWO FEET ON EACH SIDE FROM THE POINT OF INTERFERENCE.
 13. IF DURING THE COURSE OF CONSTRUCTION IT IS DETERMINED THAT THERE IS LESS THAN FOUR FEET OF COVER OVER THE TOP OF A MAIN LINE OR HOUSE LATERAL T.C.P. SEWER WHICH IS NOT INDICATED ON THE PLANS, THE PIPE SHALL BE ENCASED PER S-25 UNLESS OTHERWISE APPROVED BY THE CITY ENGINEER.
 14. HOUSE LATERALS TO BE CONSTRUCTED WITH INVERTS AT PROPERTY LINE 4 FEET BELOW CURB GRADE EXCEPT AS NOTED.
 15. REINFORCE ALL TRENCHES WITHIN PAVED AREAS TO MEET L.A. COUNTY ROAD DEPT. OR CALIFORNIA STATE HIGHWAY REQUIREMENTS IN ACCORDANCE WITH PERMITS.
 16. SEWERS TO BE TESTED FOR LEAKAGE PER SECTION 386.237 UNIFORM STANDARD SPECIFICATIONS AND SPECIAL PROVISIONS.
 17. SEWER PER SECTION 386.2-1.1 OF THE STANDARD SPECIFICATIONS, REGARDING SAFETY BARRELS.
 18. SPECIAL BARRELS IN UNIMPROVED AREAS:
 (a) IN EACH TRENCH AND REPLACE OTHER SAFETY BARRELS SO AS TO ACHIEVE THE NATURAL OR PRESCRIBED GRADE AND SLOPE SHOWN ON THE GRADE SHEET APPROVED FOR THIS TRACT BY THE BUILDING AND SAFETY DIVISION.
 (b) ALL BARRELS AND SAFETY BARRELS SHALL BE CONSTRUCTED TO A MINIMUM OF 18" DIA. UNLESS OTHERWISE SPECIFIED.
 ALL METHOD OF TEST SHALL BE AS NOTED. ACCEPTABLE CERTIFICATION OF SUCH CONSTRUCTION SHALL BE SUBMITTED TO THE CONSTRUCTION DIVISION.
 19. ALL CONSTRUCTION SHALL BE IN ACCORDANCE WITH THE STANDARD SPECIFICATIONS FOR HIGHWAY CONSTRUCTION OF THE STATE OF CALIFORNIA, DIVISION OF HIGHWAY, AND THE COUNTY OF PALOS VERDES, CALIFORNIA, PRIOR TO THE COMMENCEMENT OF CONSTRUCTION.

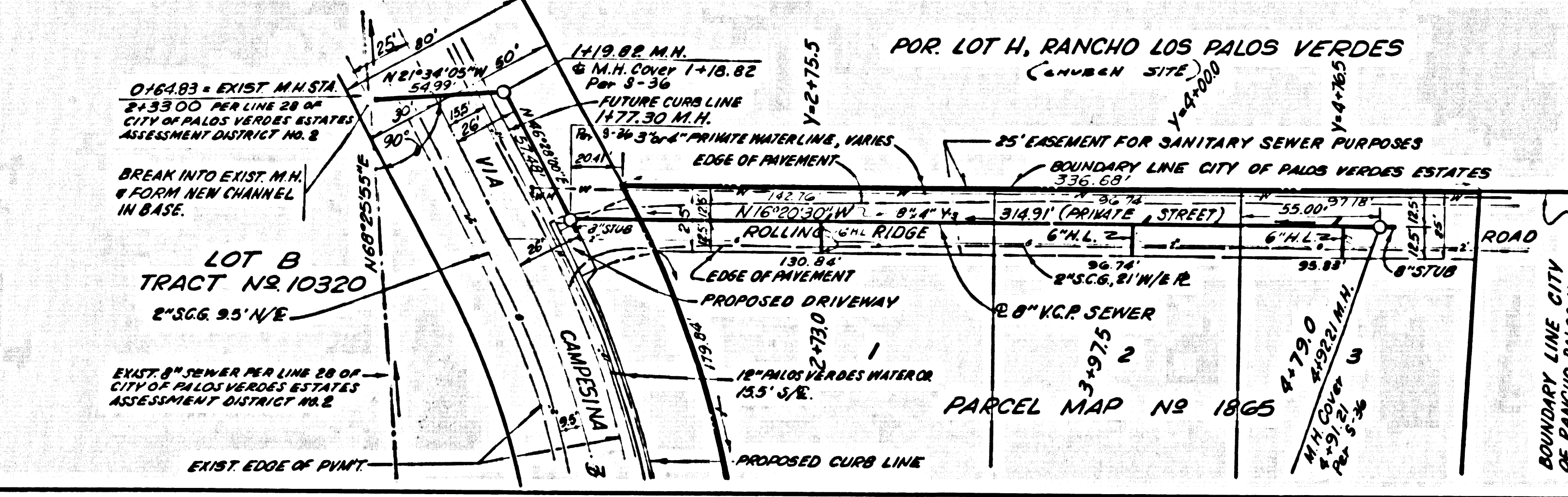
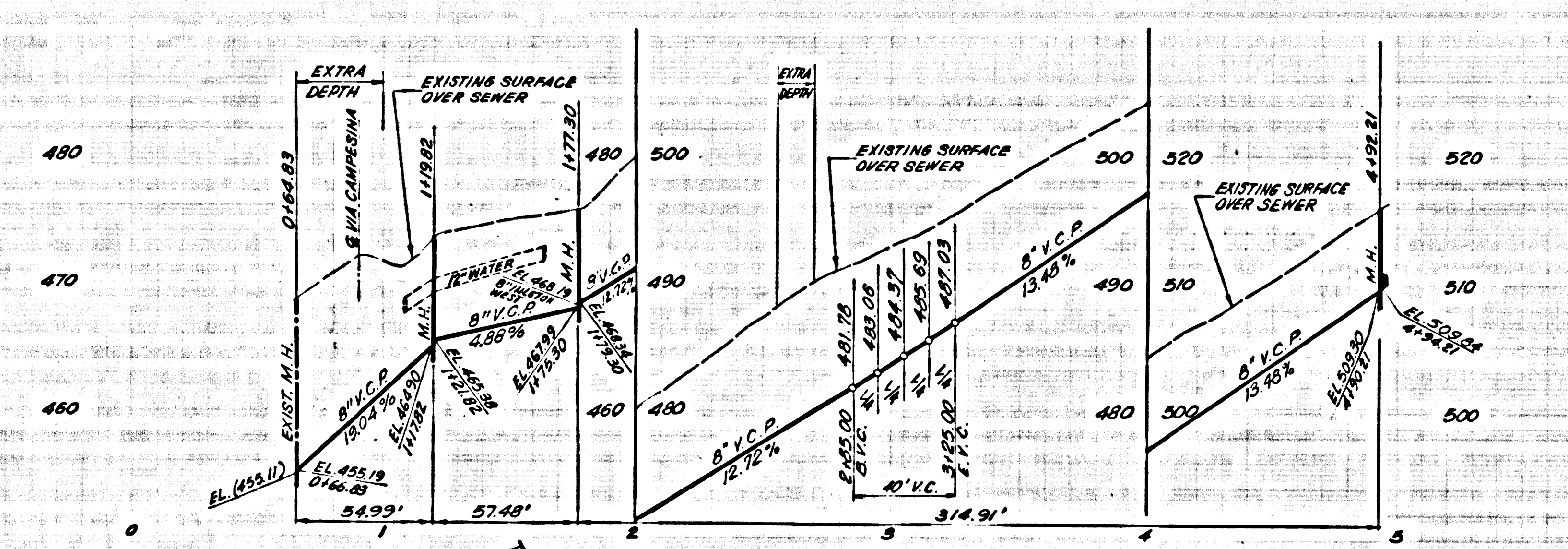
CITY OF PALOS VERDES ESTATES
 APPROVED:
 J.E. HERRVILLE
 CITY ENGINEER REG. C.E. NO. 13028

COLLECT CHARGES
 AS INDICATED

REVISION #1	S. M. T.	APPROVED:
RAISED GRADE OF SEWER FROM STA. 28+13.50 TO STA. 28+32.21 DUE TO ROCK		J.E. HERRVILLE CITY ENGINEER

CHECKED BY: J. N. 0250.05

J.N. 0250.05



P.C. 8701 PAGE 2
 DOUBLE SCALE
 NO CHARGE FOR CONNECTIONS

44742