

B.M. BL 624 ELEV. 1266.656
 L & T NEAR B.C.R. @ N.E. COR. SANFRANSQUITO
 CANYON RD. E. SERVICE RD. & LOS ROSQUES
 DR. 50 FT. N. & 18 FT. E. & INT. MKD. (BMEV) @
 NEWHALL QUAD. 19 65

THE FOLLOWING COUNTY ENGINEER STANDARD PLANS
 APPLY TO THIS PROJECT

LEGEND	5-1
MINIMUM PUBLIC SAFETY REQUIREMENTS	5-2
BRICK MANHOLE	5-3
REINFORCED PRECAST CONC. MANHOLE	5-36
LOCKING MANHOLE FRAME AND COVER	5-35
STANDARD MANHOLE STEP	5-17
BEDDING FOR SENER PIPE	5-21
CEADLING AND ENCASEMENT	5-23
WYE AND TEE SUPPORT	5-26
WYE SADDLE - HOUSE LATERAL	5-28
ALLOWABLE TRENCH WIDTHS	5-33
CHIMNEY PIPE AND BASE	5-27

DOUBLE SCALE
 NEWHALL BLDG. DIST. NO. 82

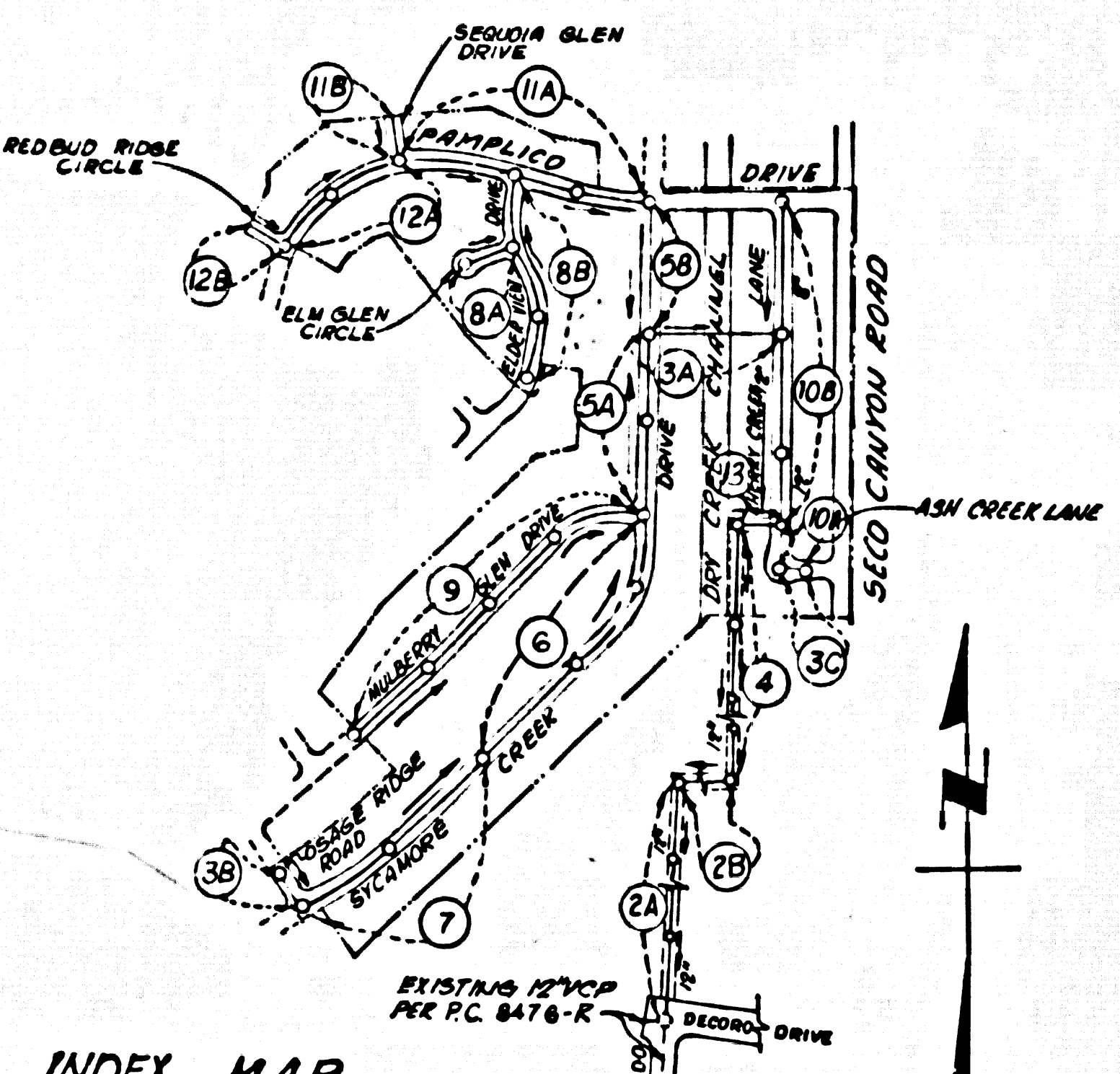
PROFILE ALIGNMENT AND GRADE OF
 SANITARY SEWERS PAGE 1
 CONSTRUCTED IN

TRACT NO. 29958
 PRIVATE CONTRACT NO. 8703
 INDEX NO. 273-S-1E5
 W.S. 62

7 SHEETS, 19 PAGES
 SCALE: VERT. 1" = 4'
 HORIZ. 1" = 40'
 MARCH, 1972

PREPARED IN THE OFFICES OF
 V. T. N. - LOS ANGELES
 5919 VAN NUYS BLVD. VAN NUYS, CALIF.
 REG. C. E. NO. 18339

43328



NOTES CONC.
 SPECIAL PROVISIONS FOR CONSTRUCTION OF SEWERS IN SANTA CLARITA PARK
 A. THE CONTRACTOR MUST NOTIFY THE DEPT. OF PARKS AND RECREATION 48 HOURS PRIOR TO CONSTRUCTION WITHIN PARK PROPERTY.
 B. CONTRACTOR MUST BRIDGE AND RE-PAVE ALL AREAS OF CONSTRUCTION TO THE SATISFACTION OF THE DEPT. OF PARKS AND RECREATION.
 C. THE CONTRACTOR MUST ERECT A SUBSTANTIAL ENCLOSURE AROUND THE WORK AREA FOR PROTECTION TO THE PATRONS OF THE PARK.
 D. CONTRACTOR SHALL REMOVE ALL RUBBISH AND DEBRIS PLACED ON PARK PROPERTY AND RESTORE THE FACILITIES WITHIN 30 DAYS AFTER CONSTRUCTION ON PARK PROPERTY.

County Sanitation Districts shall be contacted prior to the following so that required inspection can be made (Phone 537-1025 or 628-1111)

scope of the project.

No construction for the siting of industrial wastes shall be made to areas shown on these drawings without written permission from the Chief Engineer and County Engineer of the County Sanitation District.

ISSUE NO PERMITS UNTIL
 PC'S 8237-R, 8631 & 8476-R
 HAVE BEEN ACCEPTED.

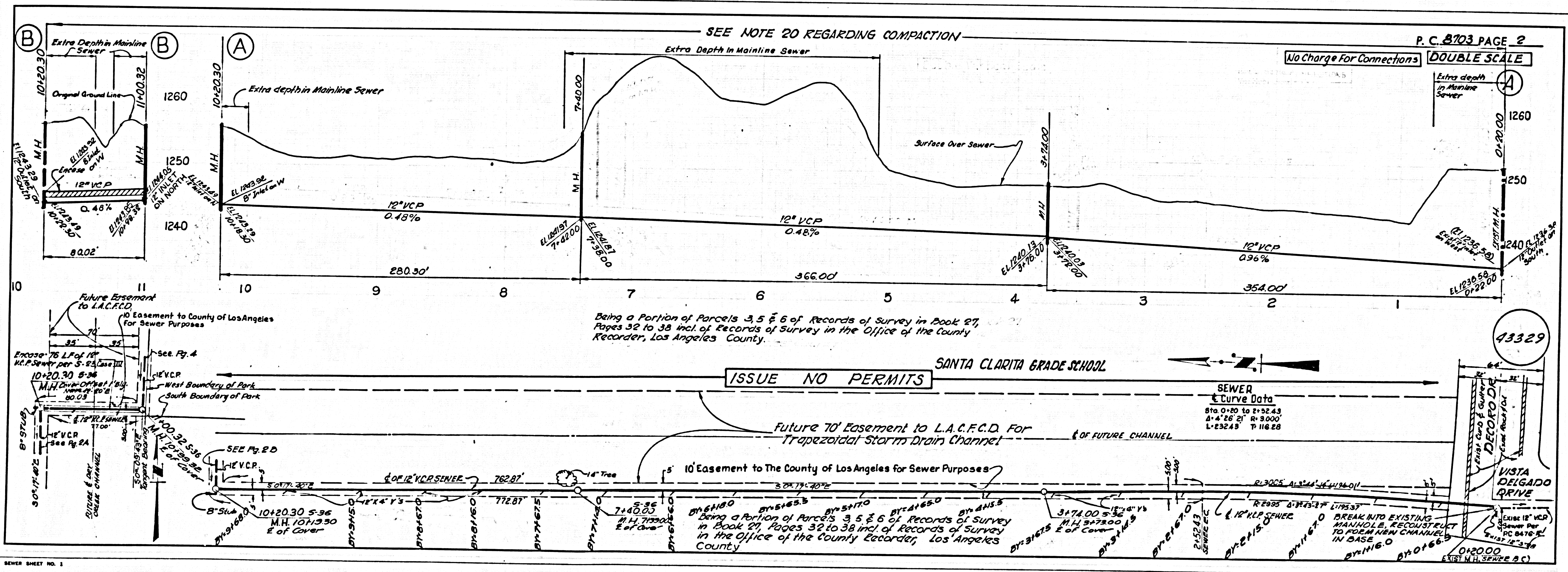
COLLECT CHARGES
 AS INDICATED

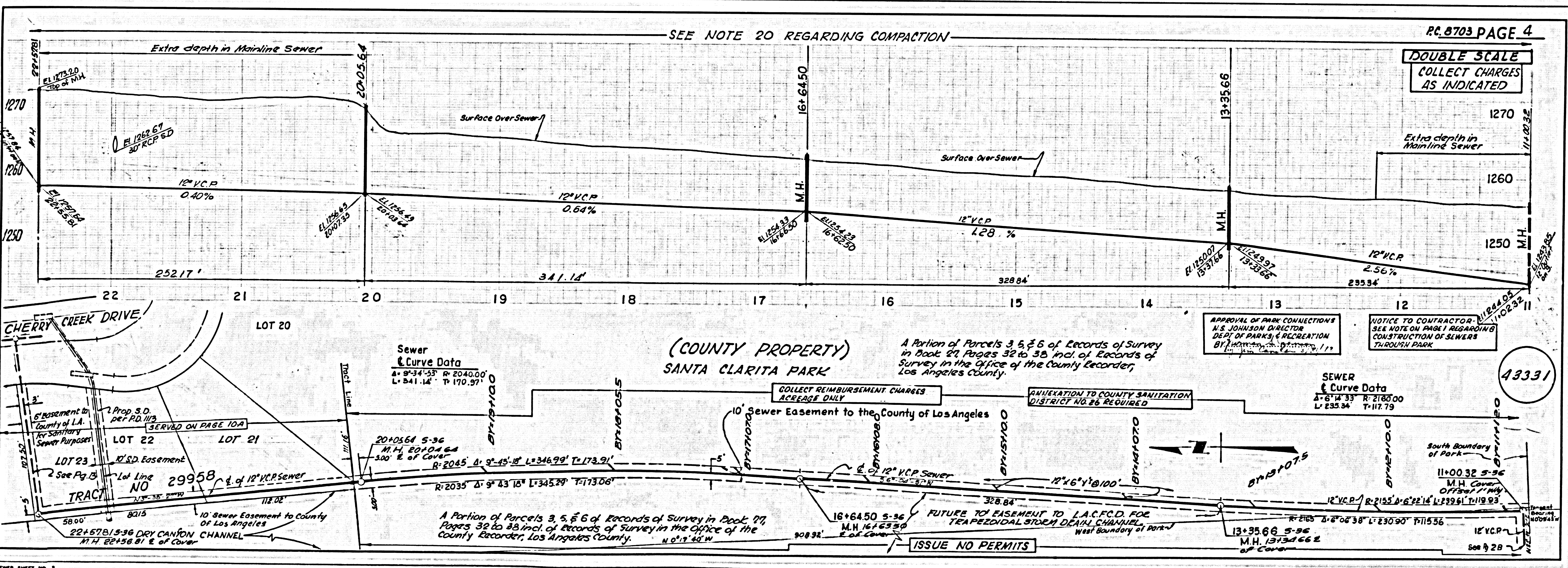
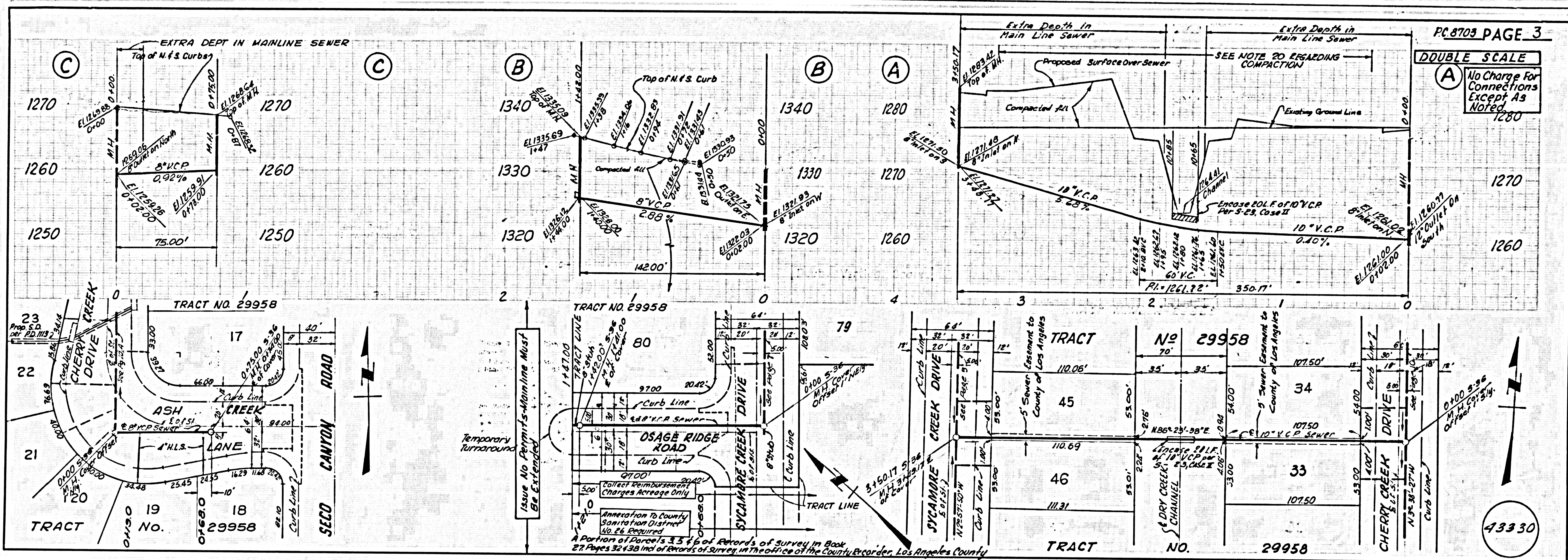
NOTICE TO CONTRACTOR
 The existence and location of any underground utility pipes or structures shown on these plans are obtained by a search of the available records to the best of my knowledge there are no existing utilities except as shown on these plans. The contractor is required to take due precautionary measures to protect the utility lines shown and any other lines not of record or not shown on these plans.
 REG. 78349

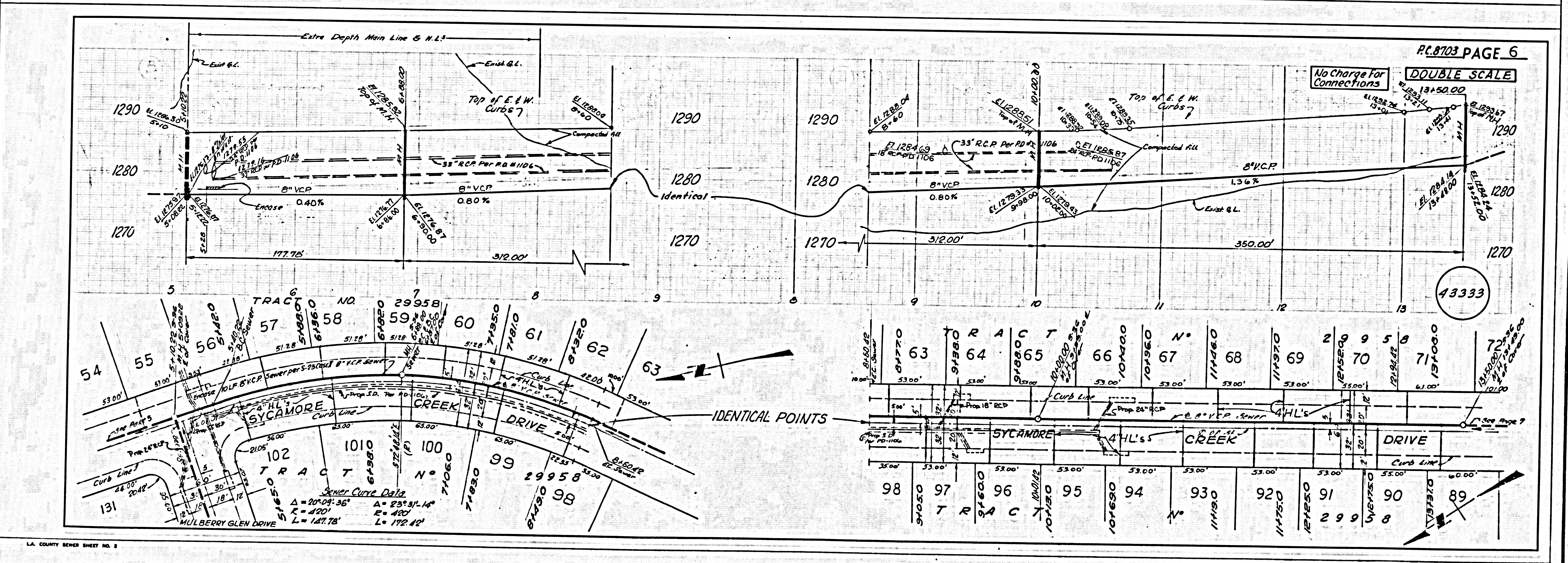
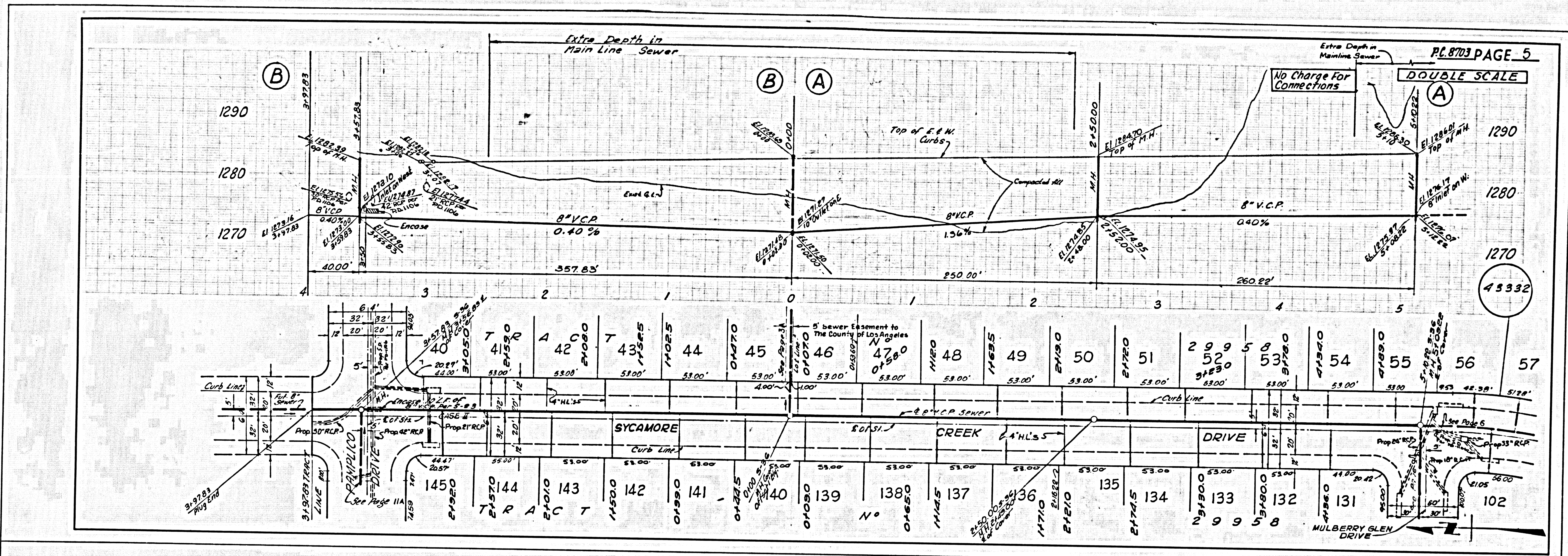
FOR LEGEND SEE PLAN NO. S-1
 GRADES TO WHICH THIS APPROXIMATELY 15% TO THE INDICATED ARE SHOWN BY PINK AND PROFILES SOLID PINKS FOR TOP OF CURBS, CURVE LINE OF TRENCH OR CURVE LINE OF ALLEYS ARE SHOWN BY DOTTED OR DASHED LINE GRADES BETWEEN SAID CURB OR ALLEYS TO CONDUIT TO A STREET.
 ELEVATIONS ARE IN FEET UNLESS OTHERWISE SPECIFIED.
 ALL WORK SHALL BE CONSTRUCTED ACCORDING TO THE STANDARD SPECIFICATIONS FOR PUBLIC WORKS CONSTRUCTION AND THE STANDARD SPECIFICATIONS FOR THE CONSTRUCTION OF COUNTY ENGINEERS DATED APRIL 9, 1970 AND SHALL BE PROSECUTED ONLY IN THE OFFICE OF THE COUNTY ENGINEER.
 BEFORE WORK CAN BE STARTED, THE CONTRACTOR MUST OBTAIN A PERMIT TO EXCAVATE IN COUNTY STREETS FROM THE L.A. COUNTY ROAD DEPT., DISTRICT OFFICE NO. 5, AND PAY A FEE TO THE COUNTY ENGINEER, ROOM 75, SAN GABRIEL CONSTRUCTION INSPECTION AND RECORD PLANS.
 APPROVAL OF THIS PLAN BY THE COUNTY OF LOS ANGELES DOES NOT CONSTITUTE A REPRESENTATION AS TO THE ACCURACY OF THE LOCATION OF OR THE EXISTENCE OR NON-EXISTENCE OF ANY UNDERGROUND UTILITY PIPE, OR STRUCTURE WITHIN THE LIMITS OF THIS PROJECT. THIS NOTE APPLIES TO ALL PAGES.
 IF WORK IS TO BE DONE IN A STATE HIGHWAY, A PERMIT MUST BE OBTAINED FROM THE STATE OF CALIFORNIA, DIVISION OF HIGHWAYS, 126 SOUTH SPRING STREET, LOS ANGELES, CALIFORNIA.

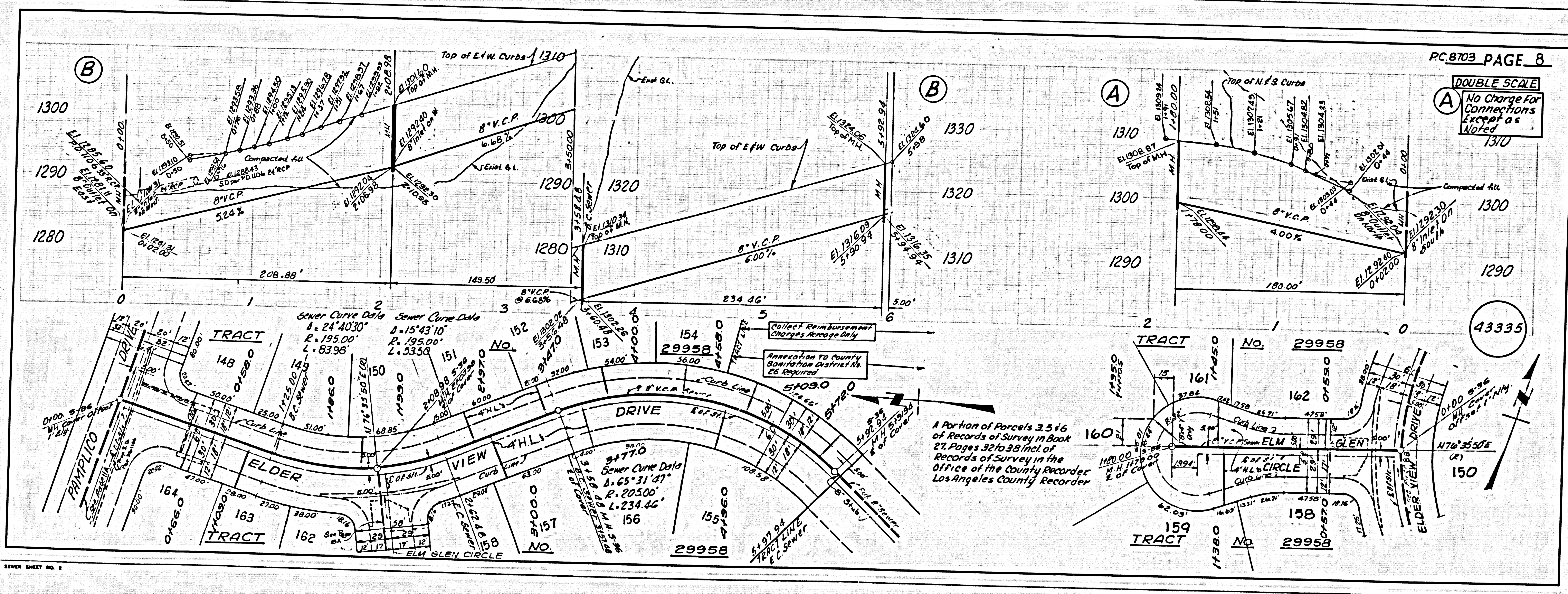
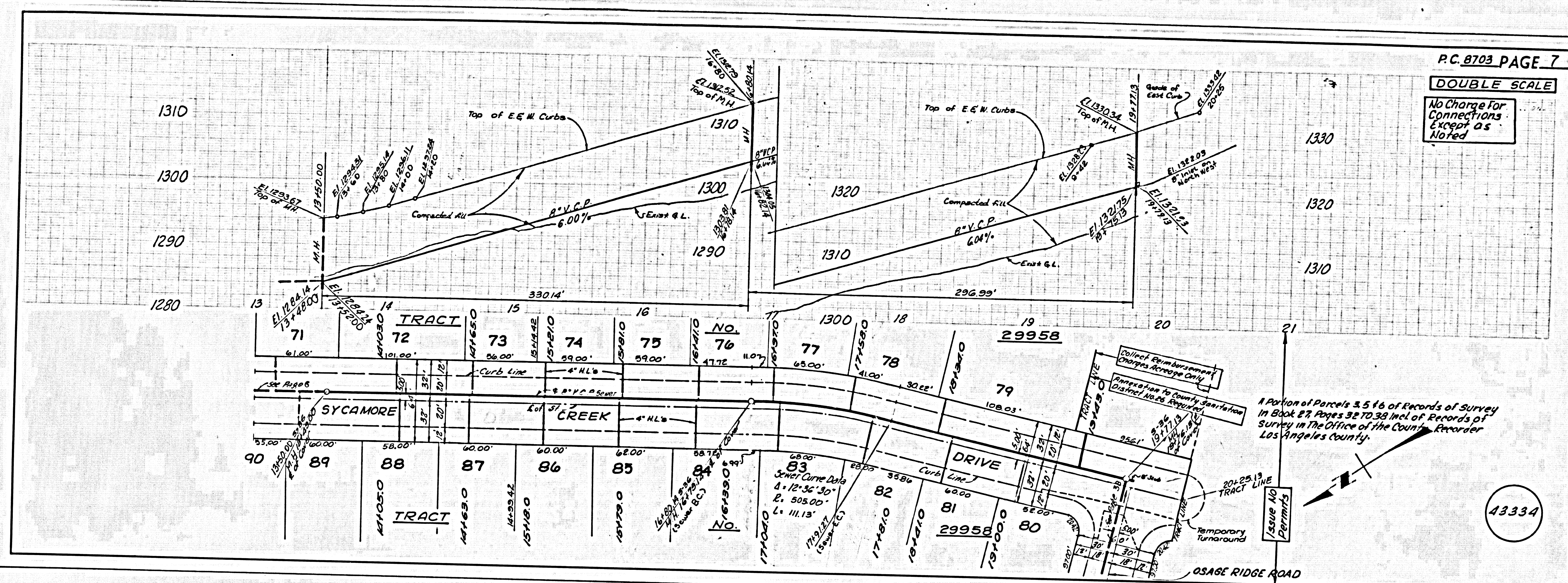
COUNTY OF LOS ANGELES, CALIFORNIA
 HARVEY T. BRANDT, COUNTY ENGINEER
 APPROVED BY: [Signature] Regional Engineer Date: [Date]
 APPROVED BY: [Signature] District Engineer Date: [Date]

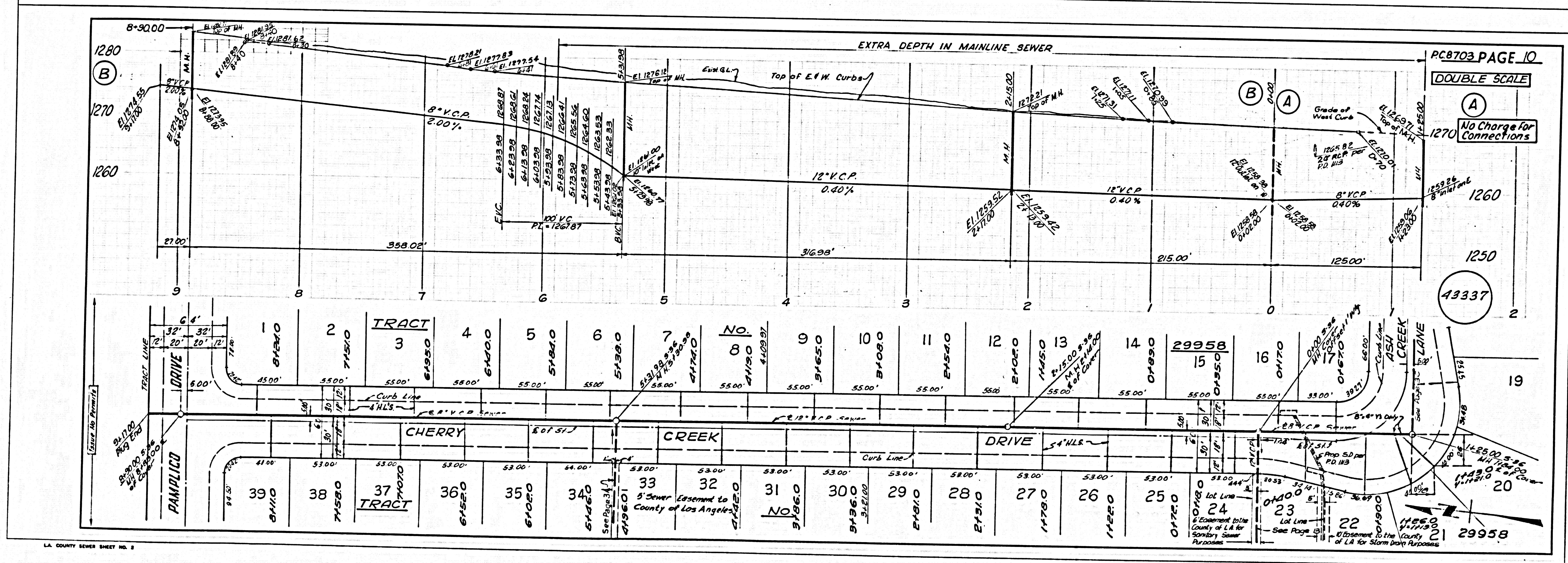
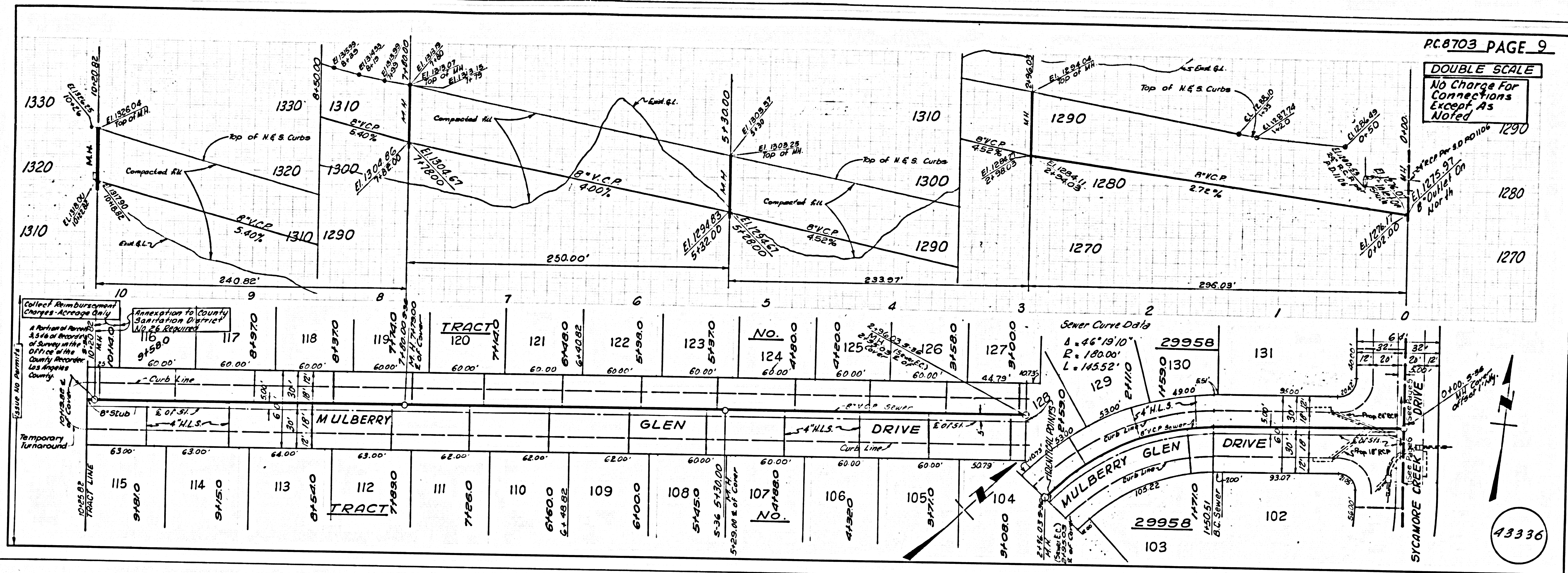
CHECKED BY: [Signature] 4-9-72
 REG. C. E. NO. 14990 Date: [Date]
 REVISION:
 Revised Sewer Grades & Elevations On Page 3A
 Approved: [Signature] Date: 4-17-72
 Office Of The County Engineer
 J. N. 0250.02

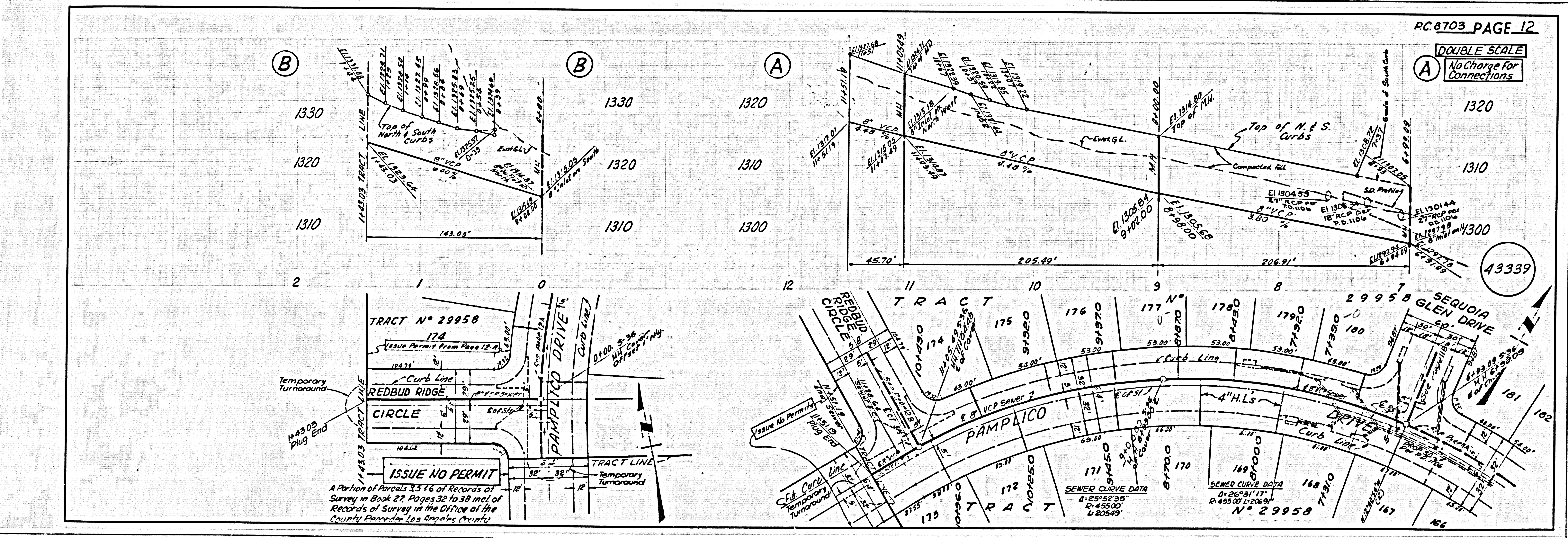
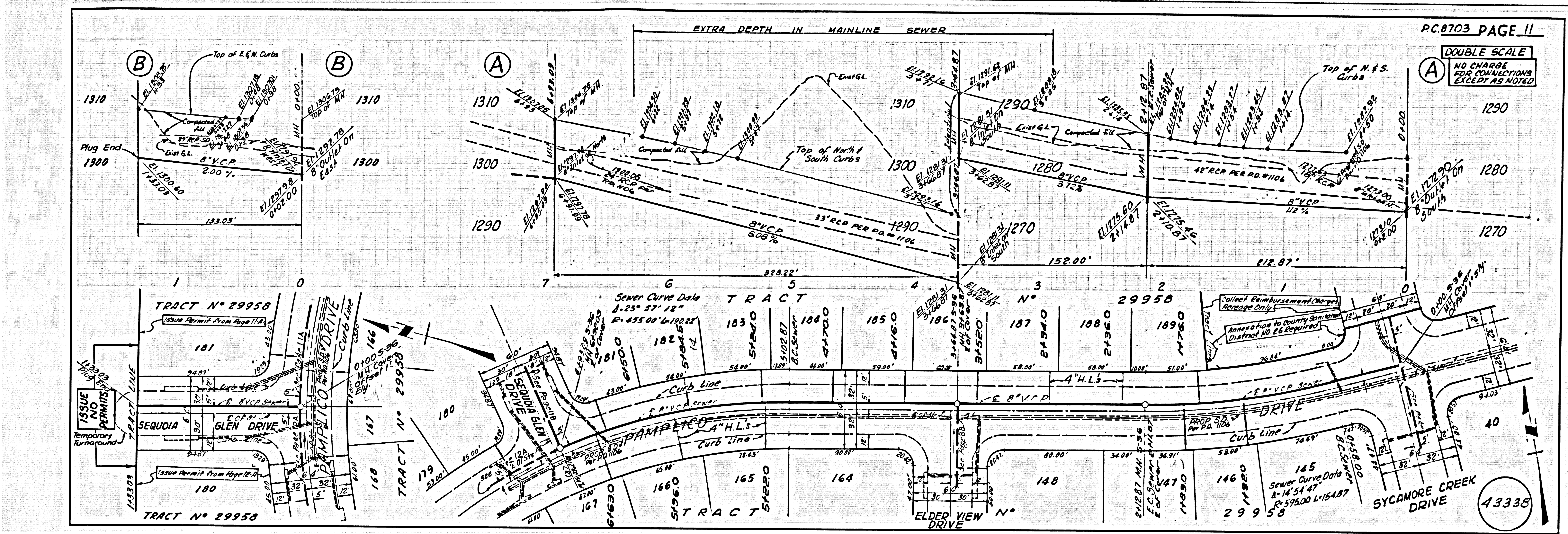




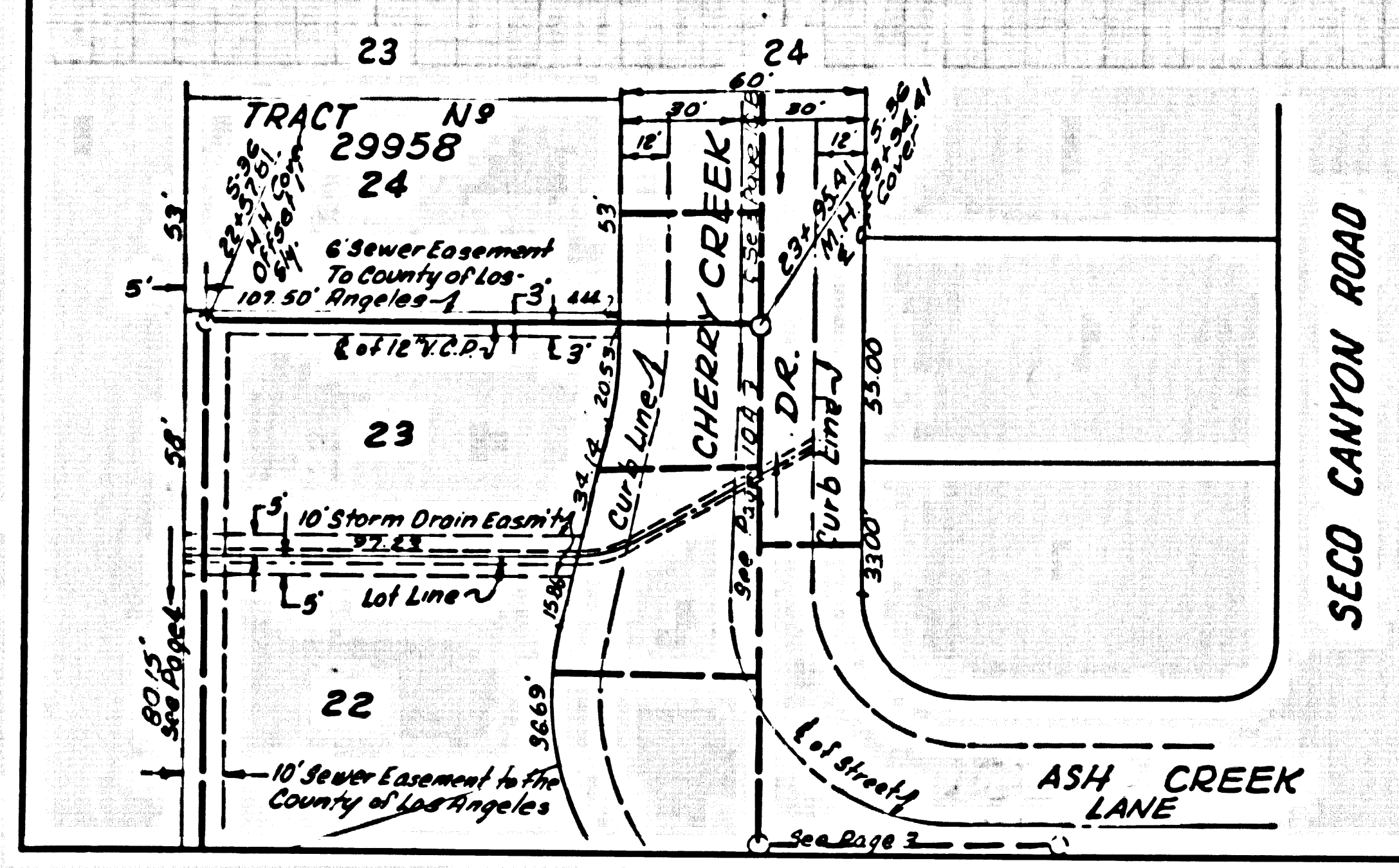
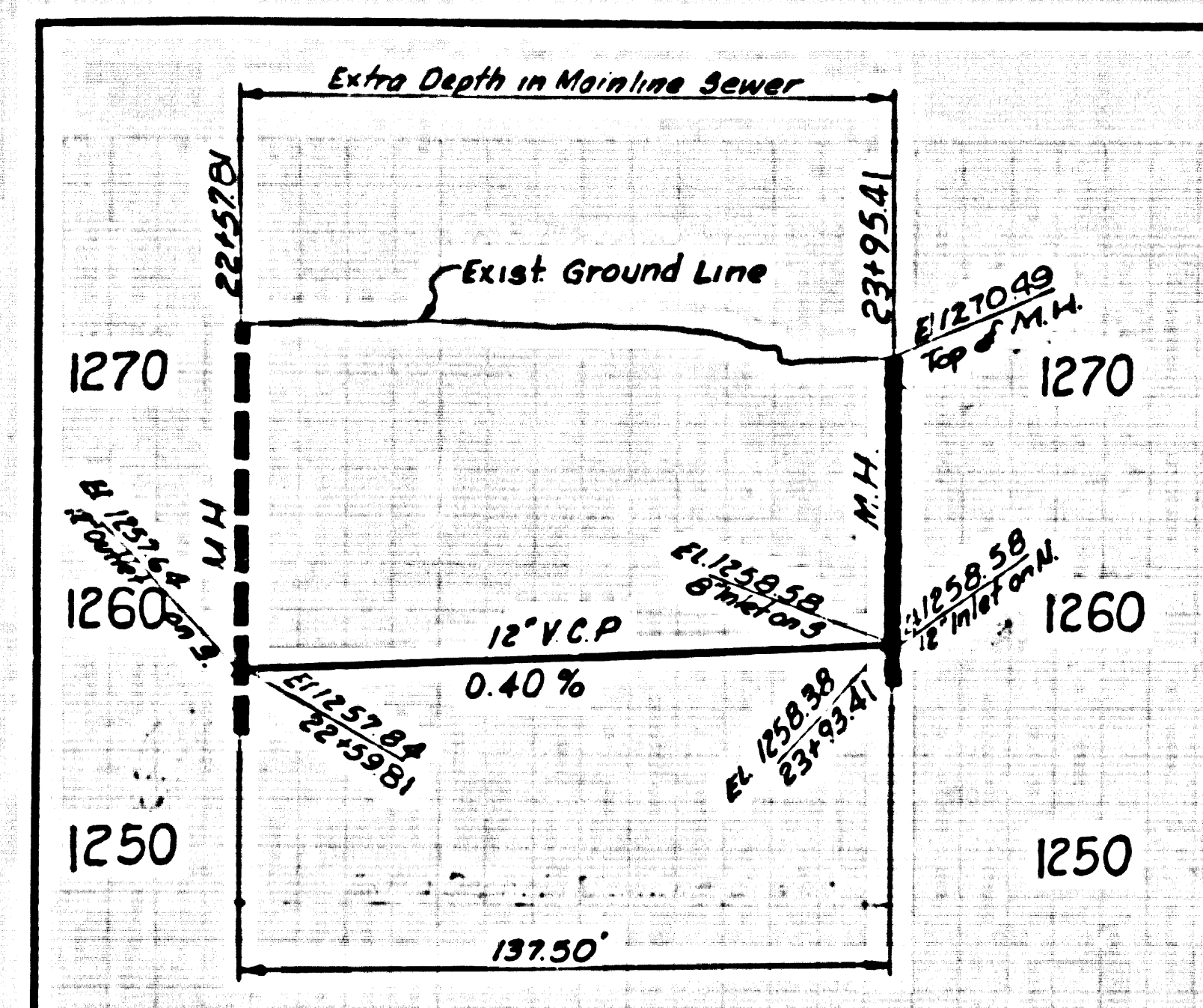








DOUBLE SCALE
No Charge For
Connections



43340