

CONSTRUCTED IN
TRACT NO. 30276
PRIVATE CONTRACT NO. 8707

W.S. 62
2 SHEETS, 3 PAGES
SCALE: VERT. 1"=5'
HORIZ. 1"=40'
DEC. 1972
PREPARED IN THE OFFICES OF

ANDEL ENGINEERING CO.
By: *E. G. Ballou*
EL. Ballou, Inc. REG. C. E. No. 10253

THE FOLLOWING LATEST REVISED STANDARD PLANS ON FILE IN THE OFFICE OF THE COUNTY ENGINEER SHALL APPLY IN THE CONSTRUCTION OF THIS PROJECT.

LEGEND	5-1
MINIMUM PUBLIC SAFETY REQUIREMENTS	5-2
BRICK MANHOLE	5-3
STANDARD MANHOLE STEP	5-17
SEWING FOR SEWER PIPE	5-21
CRACKING AND ENCASING	5-28
WYE ON THE SUPPORT	5-26
ALUMINUM SERVICE WYE	5-25
LOCKING MANHOLE FRAME AND COVER	5-28
NON-REINFORCED PRECAST CONCRETE MANHOLE	5-26
CHIMNEY PIPE AND BASE	5-27
SADDLES FOR HOUSE LATERALS	5-28

44332

COUNTY OF LOS ANGELES, CALIFORNIA
HARVEY T. BRANDT, COUNTY ENGINEER
JOHN D. PARKHURST, CHIEF ENGINEER

APPROVED *Harvey T. Brandt* 1-2-73
REG. REGIONAL ENGINEER
APPROVED *John D. Parkhurst*
OFFICE ENGINEER

CHECKED *Ralph J. Gylinski* 1-2-73
DATE

REG. C.E. NO. 18370

MENHALL BLDG. DIST. #2

J.N. 0250.02

DOUBLE SCALE

GENERAL NOTES:

1. ELEVATIONS ARE IN FEET ABOVE U.S.C. & G.S. SEA LEVEL DATUM OF 1929.
2. NO REVISIONS SHALL BE MADE IN THESE PLANS WITHOUT THE APPROVAL OF THE COUNTY ENGINEER.
3. NO REPRESENTATIVE OF THE COUNTY ENGINEER WILL SURVEY OR LAY OUT ANY PORTION OF THE WORK.
4. GRADES TO WHICH THIS IMPROVEMENT IS TO BE CONSTRUCTED ARE SHOWN ON PLANS AND PROFILES. GRADE POINTS FOR TOP OF CURB, CENTER LINE OF STREETS, OR CENTER LINE OF ALLEYS ARE SHOWN BY CIRCLES ON PROFILES AT ALL POINTS BETWEEN DESIGNATED POINTS. THE GRADE SHALL BE ESTABLISHED SO AS TO CONFORM TO A STRAIGHT LINE DRAWN BETWEEN SAID DESIGNATED POINTS.
5. THE PRIVATE ENGINEER SHALL FURNISH THE COUNTY ENGINEER WITH GRADE SHEETS AND STATIONING FOR ALL HOUSE LATERALS AND "T" OR "Y" BRANCHES AND SHALL PROVIDE STAKES FOR THEM AT THEIR PROPER LOCATIONS WITH STATIONING PLAINLY MARKED. ALL HOUSE LATERALS SHALL BE CONSTRUCTED IN A STRAIGHT ALIGNMENT AT RIGHT ANGLES FROM THE MAIN LINE SEWER EXCEPT AS SHOWN ON THE PLANS. HOUSE LATERALS FROM CHIMNEYS SHALL NOT HAVE AN ANGLE OF LESS THAN 45° WITH THE MAIN LINE SEWER. ANY CHANGE IN ALIGNMENT SHALL BE REQUESTED IN WRITING BY THE PRIVATE ENGINEER.
6. THE PRIVATE ENGINEER SHALL FURNISH THE HOUSE LATERAL DEPTH AT THE PROPERTY LINE BELOW THE TOP OF CURB ELEVATION FOR EACH HOUSE LATERAL ON THE GRADE SHEET.
7. SHOULD WORK BE STOPPED, THE CONTRACTOR MUST OBTAIN A PERMIT TO EXCAVATE IN COUNTY STREETS FROM THE L.A. COUNTY ROAD DEPT., DISTRICT OFFICE NO. 2, AND PAY A FEE TO THE COUNTY ENGINEER, ROOM 19, 2158 E. IMPERIAL HIGHWAY, DOWNNEY, CALIF. AND A FEE TO THE REGIONAL OFFICE, TO COVER THE COST OF CONSTRUCTION INSPECTION AND RECORD PLANS.
8. IF WORK IS TO BE DONE IN A STATE HIGHWAY, A PERMIT MUST BE OBTAINED FROM THE STATE OF CALIFORNIA, DIVISION OF HIGHWAYS, 126 SOUTH SPRING STREET, LOS ANGELES, CALIFORNIA.
9. APPROVAL OF THIS PLAN BY THE COUNTY OF LOS ANGELES DOES NOT CONSTITUTE A REPRESENTATION AS TO THE ACCURACY OF THE LOCATION OF OR THE EXISTENCE OR NON-EXISTENCE OF ANY UNDERGROUND UTILITY PIPE, OR STRUCTURE WITHIN THE LIMITS OF THE PROJECT. THIS NOTE APPLIES TO ALL PAGES.
10. REFER TO SECTION 7-18.1 OF THE STANDARD SPECIFICATIONS, REGARDING SAFETY ORDERS.

County Sanitation Districts shall be notified prior to the following so that required inspection can be made (Phone 537-1025 x 9 808-1181)
Acceptance of the project.
No connections for the disposal of industrial wastes shall be made to sewers shown on these drawings without written permission from the Chief Engineer and District Manager of the County Sanitation Districts.

CONSTRUCTION NOTES:

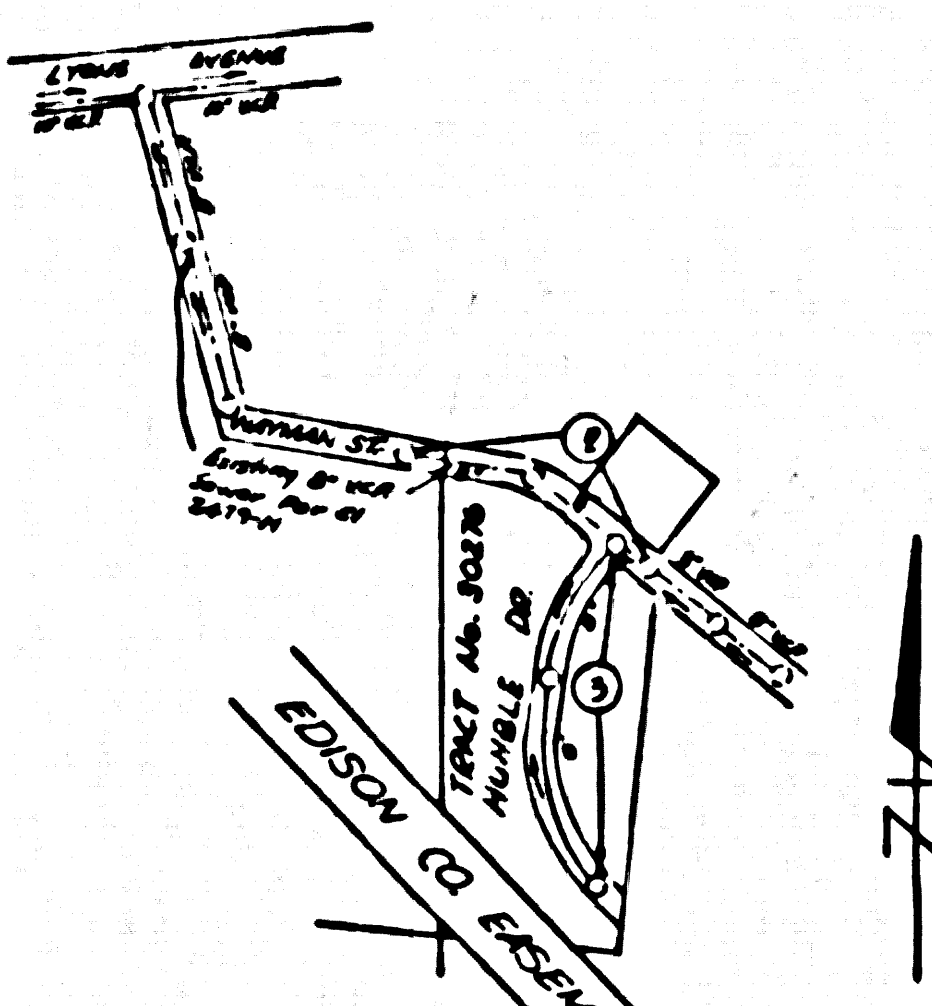
1. WORK SHALL BE CONSTRUCTED ACCORDING TO THE STANDARD SPECIFICATIONS FOR PUBLIC WORKS CONSTRUCTION 1970 EDITION WITH THE SUPPLEMENTS AND COUNTY ENGINEER SPECIAL PROVISIONS FOR THE CONSTRUCTION OF SANITARY SEWERS DATED 10-18-1972 AND SHALL BE PROSECUTED ONLY IN THE PRESENCE OF THE COUNTY ENGINEER.
2. THE CONTRACTOR SHALL NOTIFY THE CONSTRUCTION DIVISION BY TELEPHONE, TELEVISION 9-070, EXT. 8158, AT LEAST TWENTY-FOUR HOURS BEFORE STARTING ANY WORK UNDER THIS CONTRACT.
3. HOUSE LATERALS TO BE CONSTRUCTED WITH INVERTS AT PROPERTY LINE & FEET BELOW CURB GRADE EXCEPT AS NOTED.
4. WYE OR THE BRANCHES MAY BE USED FOR CONNECTIONS TO MAINLINE SEWERS EXCEPT AS NOTED.
5. ALL STRUCTURES SHALL BE EITHER BRICK MANHOLES PER 5-3 OR PRECAST CONCRETE MANHOLES PER 5-26, EXCEPT AS NOTED.
6. PROVIDE STAKES ON THE PROPERTY LINE OR PROPERTY LINES PRODUCED AT RIGHT ANGLES TO THE SEWER LINE AT THE CENTER LINE OF EACH MANHOLE.
7. VITRIFIED CLAY PIPE JOINTS SHALL BE TYPE "B", "F", OR "G" PER STANDARD SPECIFICATIONS SECTION 300-3.
8. IF A POWER POLE IS WITHIN THREE FEET OF THE SEWER, THE SEWER SHALL BE ENCASED, PER 5-23, CASE B, TWO FEET ON EACH SIDE FROM THE POINT OF INTERFERENCE.
9. DURING THE COURSE OF CONSTRUCTION IT IS DETERMINED THAT THERE IS LESS THAN FOUR FEET OF COVER OVER THE TOP OF A MAIN LINE OR HOUSE LATERAL V.C.P. SEWER WHICH IS NOT INDICATED ON THE PLANS, THE PIPE SHALL BE ENCASED PER 5-23, CASE II UNLESS OTHERWISE APPROVED BY THE COUNTY ENGINEER.
10. ALL JOINTS BETWEEN CAST IRON PIPE AND VITRIFIED CLAY PIPE SHALL BE MADE WITH A RUBBER SLEEVE JOINT, TYPE "C" OR "D", FURTH BUSHING IF NECESSARY PER STANDARD SPECIFICATIONS, SECTION 300-3.
11. SEWERS TO BE TESTED FOR LEAKAGE PER SECTION 300-3.2 OF THE STANDARD SPECIFICATIONS AND SPECIAL PROVISIONS.
12. REPAIRS TO ALL TRENCHES WITHIN PAVED AREAS TO MEET L.A. COUNTY ROAD DEPT. OR CALIFORNIA STATE HIGHWAY REQUIREMENTS IN ACCORDANCE WITH PERMITS.

REVISION
DATE 7/31/73
1. Page 2 Added 2 lots (revised Tract Map) and 2 house laterals (Saddles)
2. Pages 2 & 3 Revised Lot numbers and dimensions
3. Revised profile page 3.
Approved *Ralph J. Gylinski* REG. No. 18370
OFFICE OF THE COUNTY ENGINEER

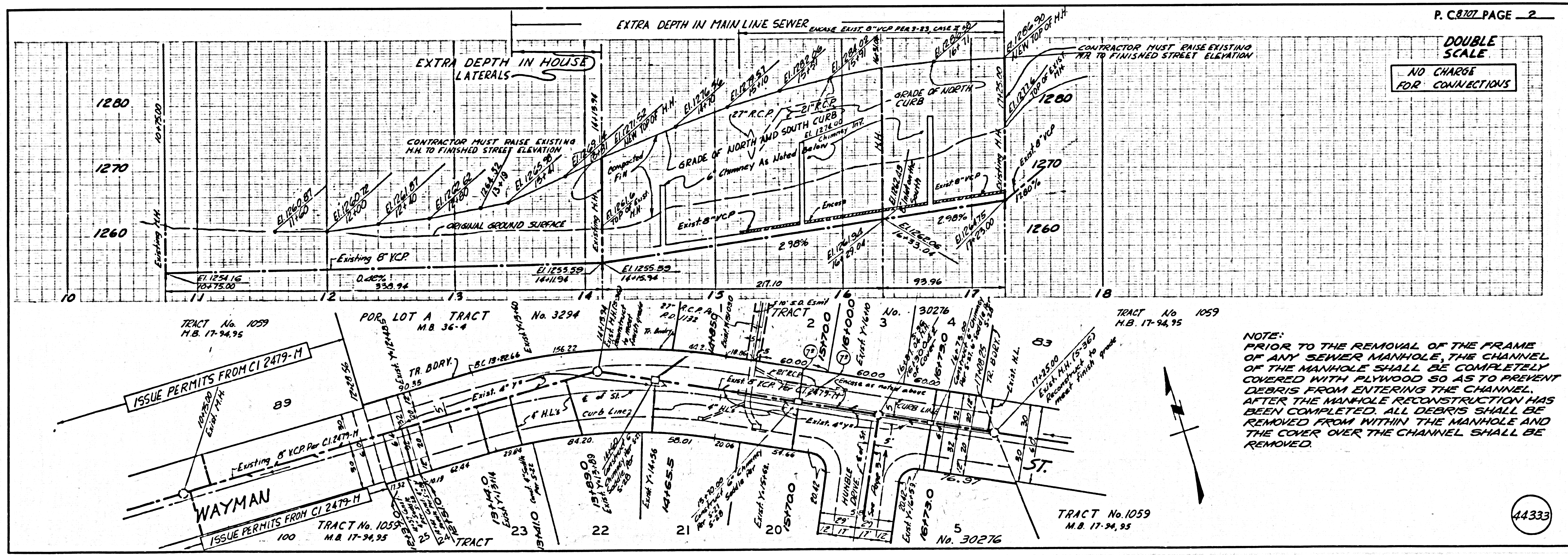
NO CHARGE FOR CONNECTIONS

B.M. 21654 ELEV. 1259.399
L. & E. SE COR. CONC. N.E. OF CHURCH BLDG. 140 FT. N. ON LYONS AVE. + 90 FT. E. 94. ARCADIA ST.
MENHALL QUAD. 1965

NOTE:
FULL COMPLIANCE WITH SECTION 306-1.0.3 OF THE SPECIAL PROVISIONS WILL BE REQUIRED FOR BACKFILL IN STREETS. CERTIFICATION OF BACKFILL COMPACTION AND SAND EQUIVALENTS BY A QUALIFIED, REGISTERED TESTING LABORATORY SHALL BE PROVIDED BY THE PERMITTEE PRIOR TO THE ISSUANCE OF A CERTIFICATE OF PARTIAL ACCEPTANCE.

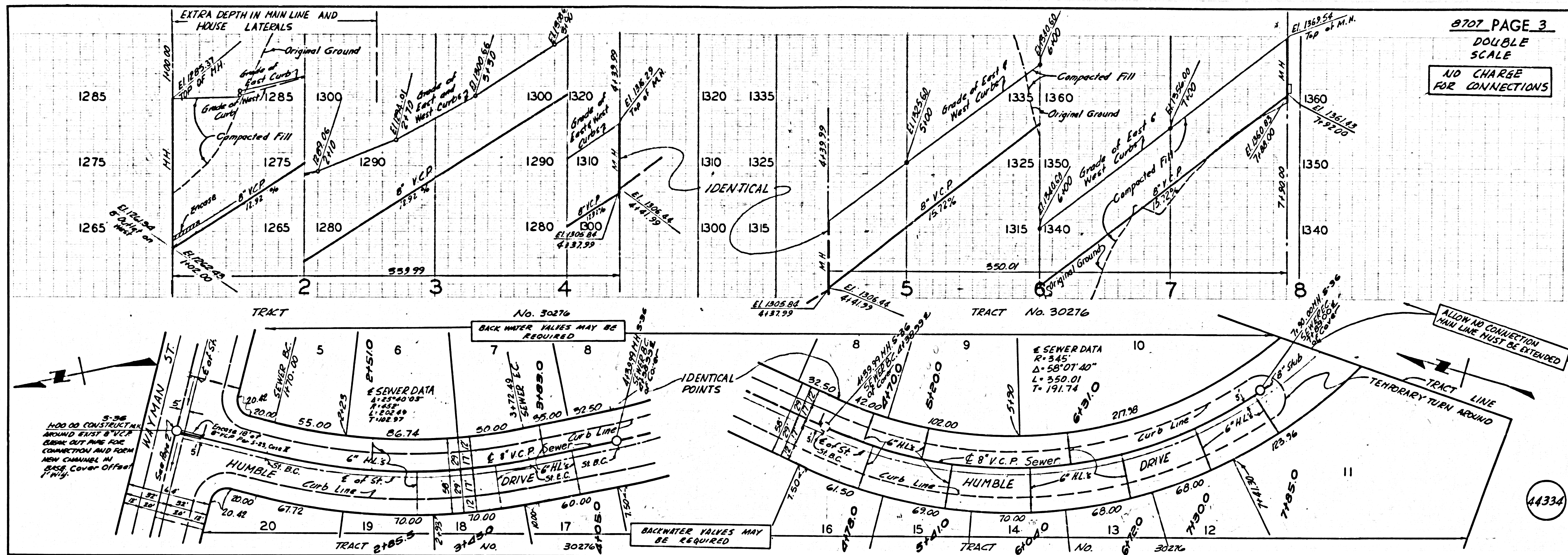


NUMBERS IN CIRCLES INDICATE PAGE NUMBER
INDEX MAP
PC NO. 8707
TRACT NO. 30276
SCALE: 1"=500'



NOTE:
PRIOR TO THE REMOVAL OF THE FRAME OF ANY SEWER MANHOLE, THE CHANNEL OF THE MANHOLE SHALL BE COMPLETELY COVERED WITH PLYWOOD SO AS TO PREVENT DEBRIS FROM ENTERING THE CHANNEL. AFTER THE MANHOLE RECONSTRUCTION HAS BEEN COMPLETED, ALL DEBRIS SHALL BE REMOVED FROM WITHIN THE MANHOLE AND THE COVER OVER THE CHANNEL SHALL BE REMOVED.

44333



8707 PAGE 3
 DOUBLE
 SCALE
 NO CHARGE
 FOR CONNECTIONS

44334

PAGE