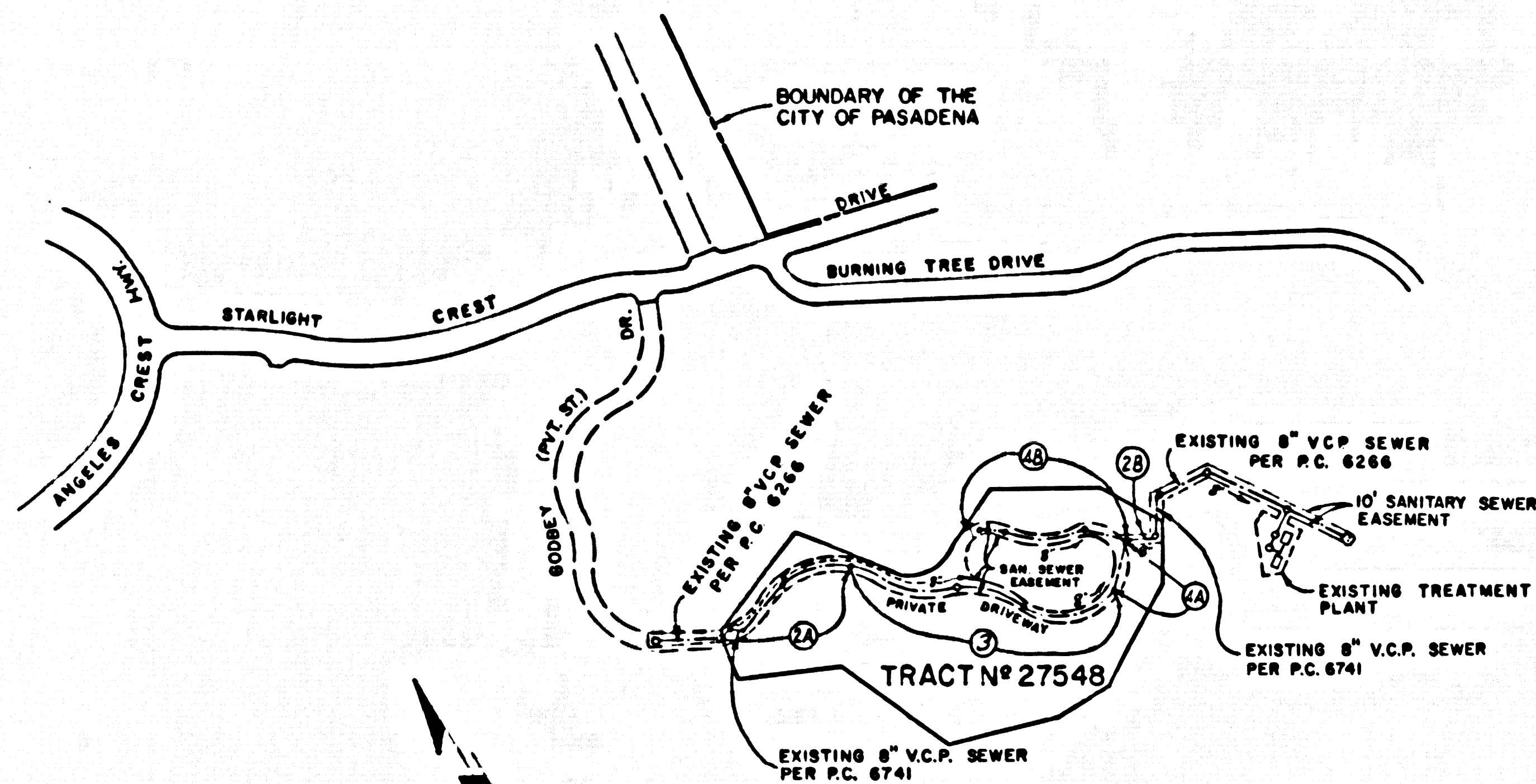


B.M. NO. SY 4923 ELEV. 1848.770  
 THIS SQUARE IN S.W. COR. CONC. HDWL.  
 10.9 MI. E. INT. HASKWELL & VISTA DEL  
 VALLE 1/2 W. & 1/2 S. GATE OF TRAVELLED RD.  
 (NEAR HWY MKR. A 100-75) (LA CANADA)  
 LA CANADA QUAD. 19.55 ADJ.

Revision 5-4-73  
 Delete house laterals from lots 1, 2, 3 and 4, page 2 section  
 (A). Relocate house lateral for lot 36 from page 4 section  
 (B) to page 2 section (B).  
 Approved: *Edward J. Valasek* 10653  
 OFFICE OF THE COUNTY ENGINEER (R.E.M.)



INDEX MAP  
 TRACT NO. 27548  
 P.C. 8708  
 SCALE: 1" = 400'

GENERAL NOTES:

- ELEVATIONS ARE IN FEET ABOVE M.S.L. & G.E. SEA LEVEL DATUM OF 1929.
- NO REVISIONS SHALL BE MADE IN THESE PLANS WITHOUT THE APPROVAL OF THE COUNTY ENGINEER.
- NO REPRESENTATIVE OF THE COUNTY ENGINEER WILL SURVEY OR LAY OUT ANY PORTION OF THE WORK.
- GRADES TO WHICH THIS IMPROVEMENT IS TO BE CONSTRUCTED ARE SHOWN ON PLANS AND PROFILES. GRADE POINTS FOR TOP OF CURBS, CENTER LINE OF STREETS, OR CENTER LINE OF ALLEYS ARE SHOWN BY CIRCLES ON PROFILES. AT ALL POINTS BETWEEN DESIGNATED POINTS THE GRADE SHALL BE ESTABLISHED SO AS TO CONFORM TO A STRAIGHT LINE BETWEEN SAID DESIGNATED POINTS.
- THE PRIVATE ENGINEER SHALL FURNISH THE COUNTY ENGINEER WITH GRADE SHEETS AND STATIONING FOR ALL HOUSE LATERALS AND "T" OR "Y" BRANCHES AND SHALL PROVIDE STAKES FOR THEM AT THEIR PROPER LOCATIONS WITH STATIONING PLAINLY MARKED. ALL HOUSE LATERALS SHALL BE CONSTRUCTED IN A STRAIGHT ALIGNMENT AT RIGHT ANGLES FROM THE MAIN LINE SEWER EXCEPT AS SHOWN ON THE PLANS. HOUSE LATERALS FROM CHIMNEYS SHALL NOT HAVE AN ANGLE OF LESS THAN 45° WITH THE MAIN LINE SEWER. ANY CHANGE IN ALIGNMENT SHALL BE REQUESTED BY WRITING BY THE PRIVATE ENGINEER.
- THE PRIVATE ENGINEER SHALL FURNISH THE HOUSE LATERAL DEPTH AT THE PROPERTY LINE BELOW THE TOP OF CURB ELEVATION FOR EACH HOUSE LATERAL ON THE GRADE SHEET.
- BEFORE WORK CAN BE STARTED, THE CONTRACTOR MUST OBTAIN A PERMIT TO EXCAVATE IN COUNTY STREETS FROM THE L.A. COUNTY ROAD DEPT., DISTRICT OFFICE NO. 2, AND PAY A FEE TO THE COUNTY ENGINEER, 800 E. IMPERIAL, BEVERLY HILLS, CALIFORNIA, OR SAN GABRIEL VALLEY REGIONAL OFFICE, TO COVER THE COST OF CONSTRUCTION INSPECTION AND RECORD PLANS.
- IF WORK IS TO BE DONE IN A STATE HIGHWAY, A PERMIT MUST BE OBTAINED FROM THE STATE OF CALIFORNIA, DIVISION OF HIGHWAYS, 130 SOUTH SPRING STREET, LOS ANGELES, CALIFORNIA.
- APPROVAL OF THIS PLAN BY THE COUNTY OF LOS ANGELES DOES NOT CONSTITUTE A REPRESENTATION AS TO THE ACCURACY OF THE LOCATION OF OR THE EXISTENCE OR NON-EXISTENCE OF ANY UNDERGROUND UTILITY PIPES, OR STRUCTURE WITHIN THE LIMITS OF THIS PROJECT. THIS NOTE APPLIES TO ALL PAGES.
- REFER TO SECTION 7-18.4.1 OF THE STANDARD SPECIFICATIONS, REGARDING SAFETY ORDERS.

CONSTRUCTION NOTES:

- WORK SHALL BE CONSTRUCTED ACCORDING TO THE STANDARD SPECIFICATIONS FOR PUBLIC WORKS CONSTRUCTION (1970 EDITION) WITH 1971 SUPPLEMENT AND COUNTY ENGINEER SPECIAL PROVISIONS FOR THE CONSTRUCTION OF SANITARY SEWERS DATED APRIL 2, 1972 AND SHALL BE PROCEEDED ONLY IN THE PRESENCE OF THE COUNTY ENGINEER.
- THE CONTRACTOR SHALL NOTIFY THE CONSTRUCTION DIVISION BY TELEPHONE, MADISON 8-4707, EXT. 81551, AT LEAST TWENTY-FOUR HOURS BEFORE STARTING ANY WORK UNDER THIS CONTRACT.
- HOUSE LATERALS TO BE CONSTRUCTED WITH INVERTS AT 8/8" LINE & FEET BELOW CURB GRADE EXCEPT AS NOTED.
- WYE OR TEE BRANCHES MAY BE USED FOR CONNECTIONS TO MAINLINE SEWERS EXCEPT AS NOTED.
- ALL STRUCTURES SHALL BE EITHER BRICK MANHOLES PER S-36 OR PRECAST CONCRETE MANHOLES PER S-36 EXCEPT AS NOTED.
- PROVIDE STAKES ON THE 8/8" LINE OR 8/8" LINES PRODUCED AT RIGHT ANGLES TO THE SEWER LINE AT THE CENTER LINE OF EACH MANHOLE.
- MANHOLE TOPS IN UNIMPROVED RIGHTS OF WAY TO BE SIX INCHES ABOVE FINISHED GRADE.
- VITRIFIED CLAY PIPE JOINTS SHALL BE TYPE "D", "F", OR "G" PER STANDARD SPECIFICATIONS SECTION 306-2.
- IF A POWER POLE IS WITHIN THREE FEET OF THE SEWER, THE SEWER SHALL BE ENCASED, PER S-23, CASE II, TWO FEET ON EACH SIDE FROM THE POINT OF INTERFERENCE.
- IF DURING THE COURSE OF CONSTRUCTION IT IS DETERMINED THAT THERE IS LESS THAN FOUR FEET OF COVER OVER THE TOP OF A MAIN LINE OR HOUSE LATERAL V.C.P. SEWER WHICH IS NOT INDICATED ON THE PLANS, THE PIPE SHALL BE ENCASED PER S-23, CASE II UNLESS OTHERWISE APPROVED BY THE COUNTY ENGINEER.
- ALL JOINTS BETWEEN CAST IRON PIPE AND VITRIFIED CLAY PIPE SHALL BE MADE WITH A RUBBER SLEEVE JOINT, TYPE "C" OR "B", (WITH BUSHING IF NECESSARY) PER STANDARD SPECIFICATIONS, SECTION 306-2.
- SEWERS TO BE TESTED FOR LEAKAGE PER SECTION 306-2.3.7 OF THE STANDARD SPECIFICATIONS AND SPECIAL PROVISIONS.
- RESURFACE ALL TRENCHES WITHIN PAVED AREAS TO MEET L.A. COUNTY ROAD DEPT. OR CALIFORNIA STATE HIGHWAY REQUIREMENTS IN ACCORDANCE WITH PERMITS.
- FIGURES IN CIRCLES AT ENDS OF HOUSE LATERAL INDICATE HOUSE LATERALS SHALL BE CONSTRUCTED WITH 2" RISE PER FOOT TO RIGHT OF WAY LINE.
- FIGURES IN CIRCLES AT END OF HOUSE LATERALS INDICATE DEPTH BELOW RIGHT OF WAY LINE.

TO BE CONSTRUCTED IN  
 TRACT NO 27548

PRIVATE CONTRACT NO. 8708  
 HOUSE LATERALS ONLY  
 W.S. 88, A-5  
 2 SHEETS, 4 PAGES  
 SCALE: VERT. 1" = 8'  
 HORIZ. 1" = 40'  
 FEBRUARY, 1972  
 PREPARED IN THE OFFICES OF  
**R.M. GALLOWAY & ASSOCIATES**  
 19730 VENTURA BOULEVARD, PHONE 348-5509  
 WOODLAND HILLS, CALIFORNIA 91364  
 BY: *William H. Galloway*  
 REG. C. E. No. 4414 B/12

43840

THE FOLLOWING LATEST REVISED STANDARD PLANS ON FILE IN THE OFFICE OF THE COUNTY ENGINEER SHALL APPLY IN THE CONSTRUCTION OF THIS PROJECT:

LOGGING	8-1
MINIMUM PUBLIC SAFETY ENCROACHMENTS	8-2
BRICK MANHOLE	8-3
STANDARD MANHOLE STOP	8-17
SHOULDER FOR SEWER PIPE	8-18
CEILING AND ENCASING	8-20
WYE OR TEE SUPPORT	8-21
ALLOWABLE TRENCH WIDTHS	8-22
LOCKING MANHOLE FRAME AND COVER	8-23
NON-REINFORCED PRECAST CONCRETE MANHOLE	8-28

COUNTY OF LOS ANGELES, CALIFORNIA  
 HARVEY T. BRANDT, COUNTY ENGINEER JOHN D. PARKHURST, CHIEF ENGINEER  
 CO. SAN. DIST. NO. 23  
 APPROVED: *Edward J. Valasek* 10653 APPROVED: *John D. Parkhurst* 10653  
 REGIONAL ENGINEER DATE OFFICE ENGINEER  
 CHECKED: *John D. Parkhurst* 2-1-72  
 NO. C.E. NO. 7812  
 MONTROSE BLDG. DIST. 31 I.N. 0250.02

