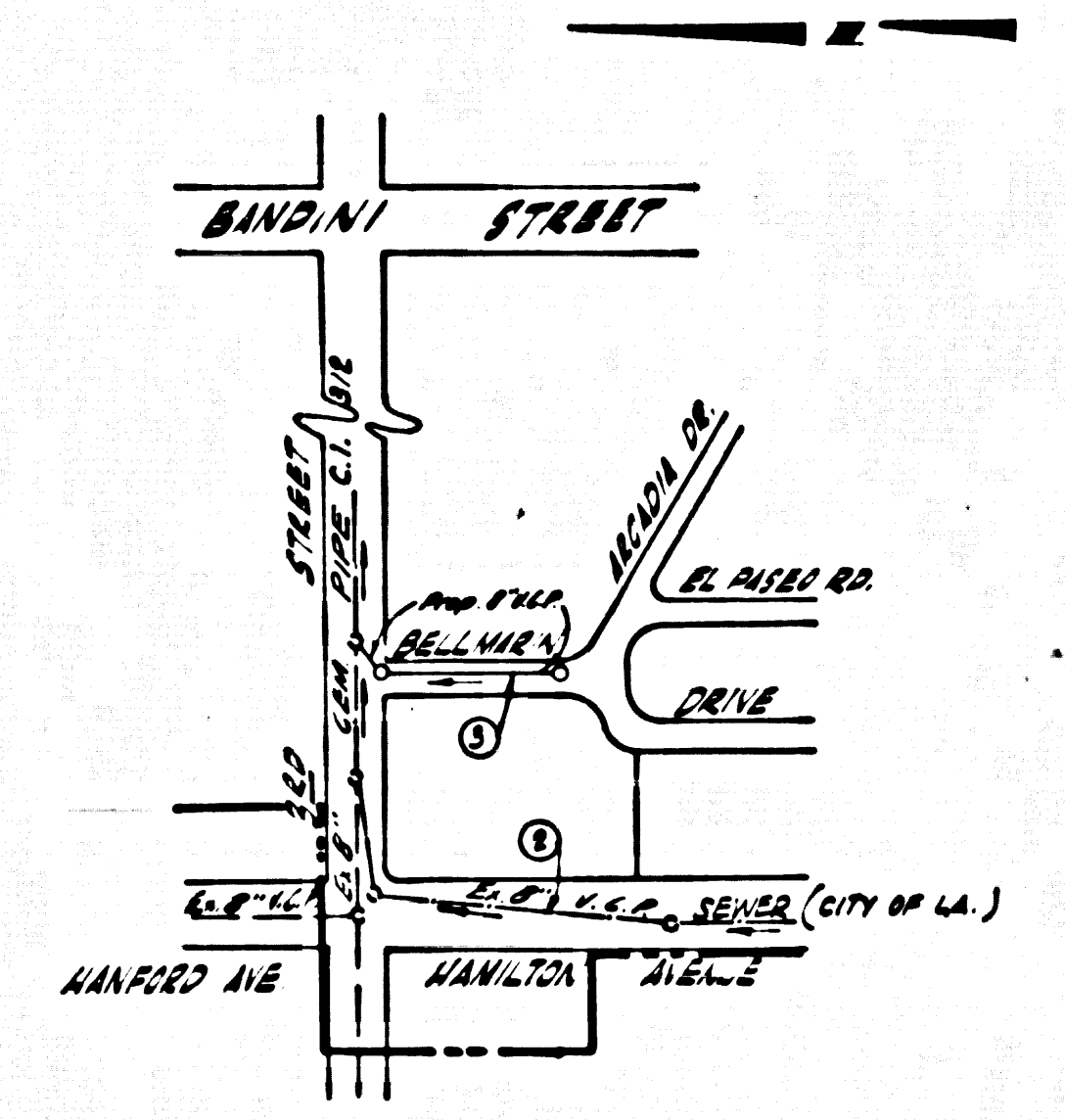


B.M. BY 1157 ELEV. 21.300  
 U.S.C. 1.6. 1/4" = 10' CONG. D.S. 1/4" = 10' V.C.C.  
 SUSTY ST. 1 1/2" W. S. HAMILTON ST. @ INT.  
 TO SAN PABLO PLAZA RANCHO AND 1/2" = 10' 1/2"  
 BASELINE QUAD. 19 63.



INDEX MAP  
 TRACT NO. 27088  
 SCALE 1" = 20'

REVISION	
1.	ELIMINATE 4" H.L. TO SERVE LOT 4 SHOWN ON PAGE 2.
2.	ELIMINATE 4" H.L. TO SERVE LOT 5 SHOWN ON PAGE 3 THESE LOTS DERIVED FROM EXISTING H.L. FROM SEWER ON 315' 6"
DATE 1/15/72 BY E.C.E. 18574 C.M.	
APPROVED	

"FULL COMPLIANCE WITH SECTION 306-1.3.8 OF THE SPECIAL PROVISIONS WILL BE REQUIRED FOR BACKFILL IN STREETS. CERTIFICATION OF BACKFILL COMPLETION AND SAID EQUIVALENTS BY A QUALIFIED REGISTERED TESTING LABORATORY SHALL BE PROVIDED BY THE PERMITTEE PRIOR TO THE ISSUANCE OF A CERTIFICATE OF PARTIAL ACCEPTANCE."

No connections for the disposal of industrial wastes shall be made to sewers shown on these drawings without written permission from the Chief Engineer and General Manager of the County Sanitation Districts.

County Sanitation Districts shall be notified prior to the following in that required inspection can be made (Phone 444-4444 - 628-1818)

Acceptance of the project.

APPROVAL FOR HOUSE CONNECTIONS  
 IN HAMILTON AVENUE ONLY

CITY OF LOS ANGELES  
 DONALD C. TILLMAN, CITY ENGINEER

DATE 1/15/72  
 BY [Signature]

APPROVED [Signature] 1/15/72  
 Donald C. Tillman  
 CITY ENGINEER

GENERAL NOTES:

1. REVISIONS ARE IN PINK AND/OR U.S.C. & S.S. SEE REVISION OF 1972.
2. NO REVISIONS SHALL BE MADE BY THESE PLANS WITHOUT THE APPROVAL OF THE COUNTY ENGINEER.
3. NO REPRESENTATIVE OF THE COUNTY ENGINEER WILL SURVEY OR LAY OUT ANY PORTION OF THE WORK.
4. GRADES TO WHICH THE IMPROVEMENT IS TO BE CONSTRUCTED ARE SHOWN ON PLANS AND PROFILES. GRADE POINTS FOR POLE OR CURB, CENTER LINE OF SEWER, OR CENTER LINE OF ALLEYS ARE SHOWN IN CIRCLES ON PROFILES AT ALL POINTS BETWEEN BEING. MATRI POINTS THE GRADE SHALL BE ESTABLISHED SO AS TO CONFORM TO A STRAIGHT LINE DRAWN BETWEEN SAID DESIGNATED POINTS.
5. THE PRIVATE ENGINEER SHALL FURNISH THE COUNTY ENGINEER WITH GRADE SHEETS AND STATIONING FOR ALL HOUSE LATERALS AND "T" OR "Y" BRANCHES AND SHALL PROVIDE STAKES FOR THEM AT THESE POINTS LOCATIONS WITH STATIONING. PLAINLY MARKED. ALL HOUSE LATERALS SHALL BE CONSTRUCTED IN A STRAIGHT ALIGNMENT AT RIGHT ANGLES FROM THE MAIN LINE SEWER EXCEPT AS SHOWN ON THE PLANS. HOUSE LATERALS FROM CHIMNEYS SHALL NOT HAVE AN ANGLE OF LESS THAN 45° WITH THE MAIN LINE SEWER, AND CHANGES IN ALIGNMENT SHALL BE REQUESTED BY WRITING BY THE PRIVATE ENGINEER.
6. THE PRIVATE ENGINEER SHALL FURNISH THE HOUSE LATERAL BOPPS AT THE PROPERTY LINE BELOW THE TOP OF CURB ELEVATION FOR EACH HOUSE LATERAL ON THE GRADE SHEET.
7. BEFORE WORK CAN BE STARTED, THE CONTRACTOR MUST OBTAIN A PERMIT TO EXCAVATE IN COUNTY STREETS FROM THE L. A. COUNTY ROAD DEPT., DISTRICT OFFICE NO. 2 AND PAY A FEE TO THE COUNTY ENGINEER.
8. IF WORK IS TO BE DONE IN A STATE HIGHWAY, A PERMIT MUST BE OBTAINED FROM THE STATE OF CALIFORNIA, DIVISION OF HIGHWAYS, 138 SOUTH BRIDGE STREET, LOS ANGELES, CALIFORNIA.
9. APPROVAL OF THIS PLAN BY THE COUNTY OF LOS ANGELES DOES NOT CONSTITUTE A REPRESENTATION AS TO THE ACCURACY OF THE LOCATION OR OF THE EXISTENCE OR NON-EXISTENCE OF ANY UNDERGROUND UTILITY PIPE, OR STRUCTURE WITHIN THE LIMITS OF THIS PROJECT. THIS WORK APPLIES TO ALL PAGES.
10. REFER TO SECTION 7-14.2 OF THE STANDARD SPECIFICATIONS, REGARDING SAFETY GATES.

CONSTRUCTION NOTES:

1. WHEN SHALL BE CONSTRUCTED ACCORDING TO THE STANDARD SPECIFICATIONS FOR PUBLIC WORKS CONSTRUCTION 1972 EDITION WITH 1977 SUPPLEMENTS AND COUNTY ENGINEER SPECIAL PROVISIONS FOR THE CONSTRUCTION OF SANITARY SEWERS DATED 1/21/72, 1/27/72 AND SHALL BE MODIFIED ONLY IN THE PRESENCE OF THE COUNTY ENGINEER.
2. THE CONTRACTOR SHALL NOTIFY THE CONSTRUCTION DIVISION BY TELEPHONE, HAMILTON 9-4642, EXT. 8158, AT LEAST TWENTY-FOUR HOURS BEFORE STARTING ANY WORK UNDER THIS CONTRACT.
3. HOUSE LATERALS TO BE CONSTRUCTED WITH BRANCHES AT PROPERTY LINE A FEET BELOW CURB GRADE EXCEPT AS NOTED.
4. WYE OR T BRANCHES MAY BE USED FOR CONNECTIONS TO MAINLINE SEWERS EXCEPT AS NOTED.
5. ALL STRUCTURES SHALL BE WITHIN BRICK MANHOLES PER 84 OR PRECAST CONCRETE MANHOLES PER 8.36, EXCEPT AS NOTED.
6. PROPOSED STAKES ON THE PROPERTY LINE OR PROPERTY LINE PROJECTIONS AT RIGHT ANGLES TO THE SEWER LINE AT THE CENTER LINE OF EACH MANHOLE.
7. MANHOLES SHALL BE UNIMPROVED HEIGHTS OF 4' 6" TO BE 6" HIGHER ABOVE FINISHED GRADE.
8. VITRIFIED CLAY PIPE JOINTS SHALL BE TYPE "B", "C" OR "D" PER THE STANDARD SPECIFICATIONS SECTION 308-3.
9. IF A POWER POLE IS WITHIN THREE FEET OF THE SEWER, THE SEWER SHALL BE ENCASED, PER 8.36, CASE II, TWO FEET ON EACH SIDE FROM THE POINT OF INTERFERENCE.
10. IF DURING THE COURSE OF CONSTRUCTION IT IS DETERMINED THAT THERE IS LESS THAN FOUR FEET OF COVER OVER THE TOP OF A MAIN LINE OR HOUSE LATERAL V.C.P. SEWER WHICH IS NOT INDICATED ON THE PLANS, THE PIPE SHALL BE ENCASED PER 8.36, CASE II UNLESS OTHERWISE APPROVED BY THE COUNTY ENGINEER.
11. ALL JOINTS BETWEEN CAST IRON PIPE AND VITRIFIED CLAY PIPE SHALL BE MADE WITH A RUBBER SLIPPER JOINT, TYPE "C" OR "D", FIFTH EDITION IF NECESSARY PER STANDARD SPECIFICATIONS, SECTION 308-2.
12. SEWERS TO BE TESTED FOR LEAKAGE PER SECTION 306-2.2.2 OF THE STANDARD SPECIFICATIONS AND SPECIAL PROVISIONS.
13. RESURFACE ALL TRENCHES WITHIN FIVE FEET AREA TO MEET L.A. COUNTY ROAD DEPT. OR CALIFORNIA STATE HIGHWAY REQUIREMENTS IN ACCORDANCE WITH PERMITS.

PROFILE, ALIGNMENT AND GRADE OF  
 SANITARY SEWERS PAGE 1

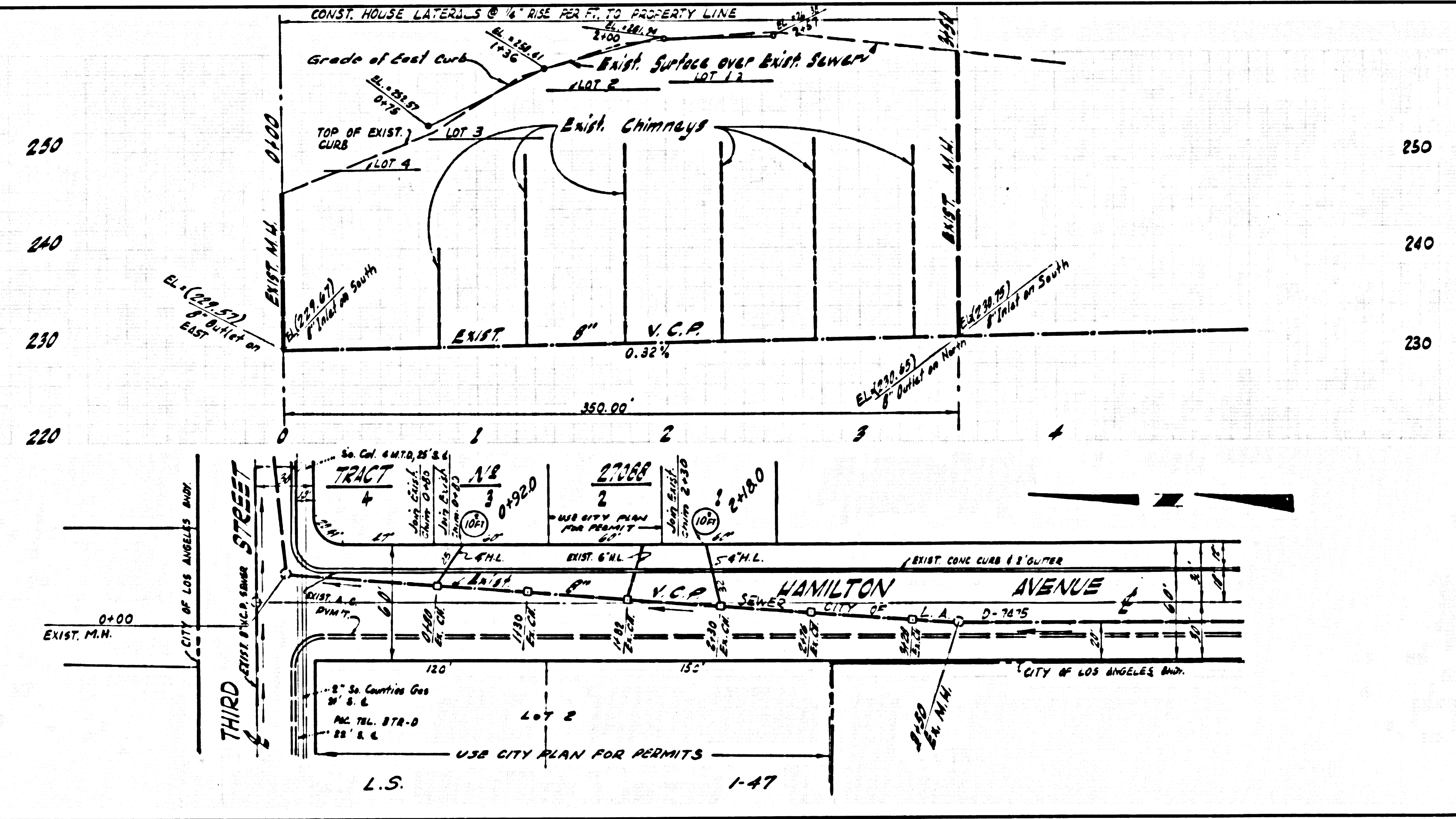
TO BE CONSTRUCTED IN  
 TRACT NO. 27088  
 PRIVATE CONTRACT NO. 8711

W.S. 29  
 SHEETS: 3 PAGES 44942  
 SCALE: 1" = 1' VERT. 1" = 40' HORIZ.  
 JAN , 1972  
 PREPARED IN THE OFFICES OF  
 LANGE ENGINEERS  
 BY: C.M. Leonard  
 REG. C.E. No. 180

THE FOLLOWING LATEST REVISION STANDARD PLANS ON FILE IN THE OFFICE OF THE COUNTY ENGINEER SHALL APPLY IN THE CONSTRUCTION OF THIS PROJECT.

STANDARD PUBLIC SAFETY ENCLOSURES	8.3
BRICK MANHOLE	8.36
STANDARD MANHOLE STEP	8.37
BRICKS FOR SEWER PIPE	8.38
CRACKING AND REPAIRS	8.39
WYE OR T BRANCH	8.39
ALLOWABLE TRENCH WIDTHS	8.39
LOCKING MANHOLE FRAME AND COVER	8.39
NON-REINFORCED PRECAST CONCRETE MANHOLE	8.39

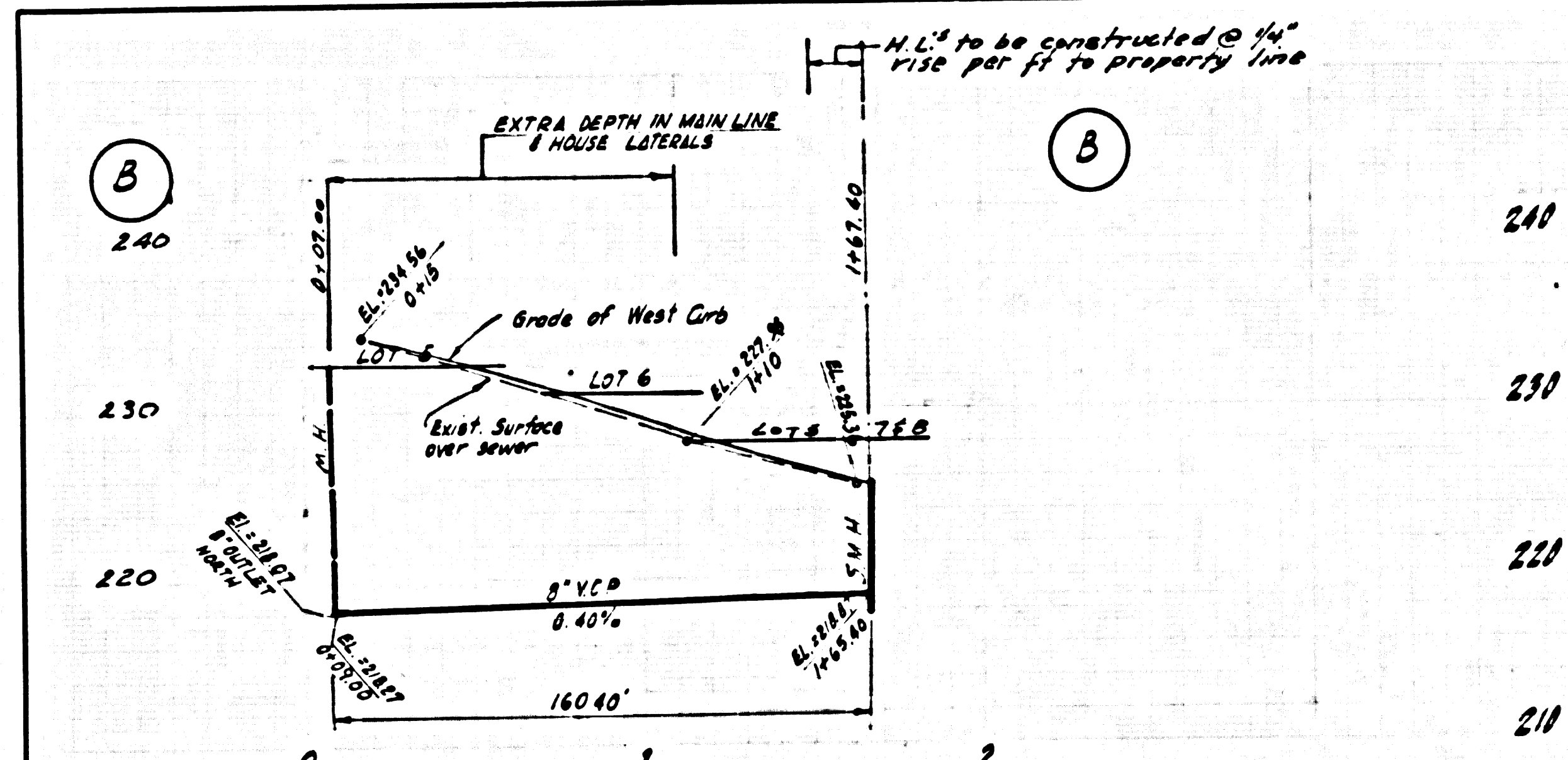
COUNTY OF LOS ANGELES, CALIFORNIA  
 HARVEY I. BRANDT, COUNTY ENGINEER JOHN D. PARKHURST, CHIEF ENGINEER  
 APPROVED [Signature] 1/15/72 APPROVED [Signature] 1/15/72  
 REGIONAL ENGINEER OFFICE ENGINEER  
 CHECKED: [Signature] 1/15/72  
 REG. C.E. NO. 10653  
 LOMITA BLDG. DIST. 12 I.N. 0250.02



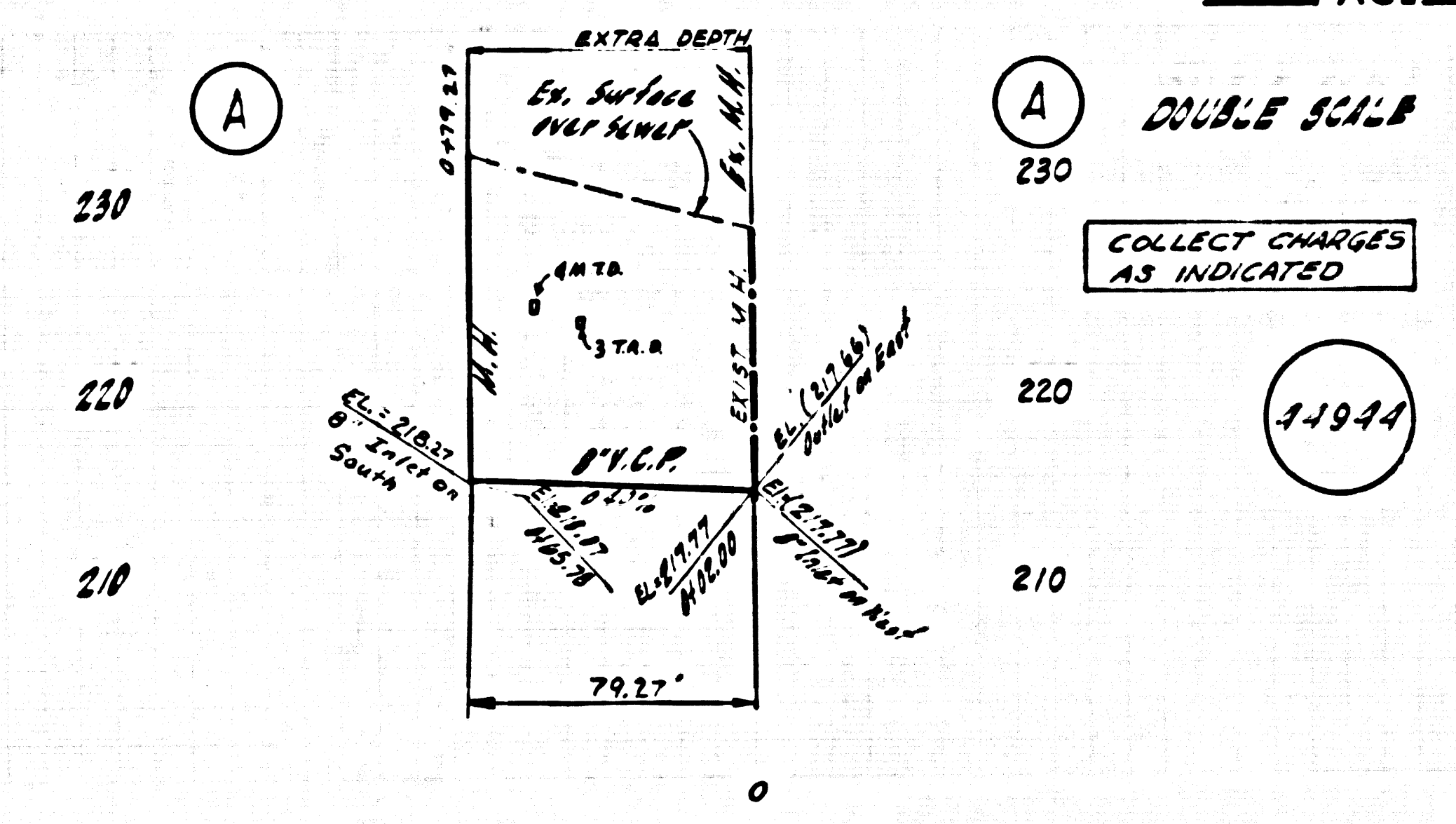
P.C. 8711 PAGE 2

DOUBLE SCALE  
 NO CHARGE FOR CONNECTIONS

44945



240  
230  
220  
210



230  
220  
210

DOUBLE SCALE

COLLECT CHARGES AS INDICATED

11944

