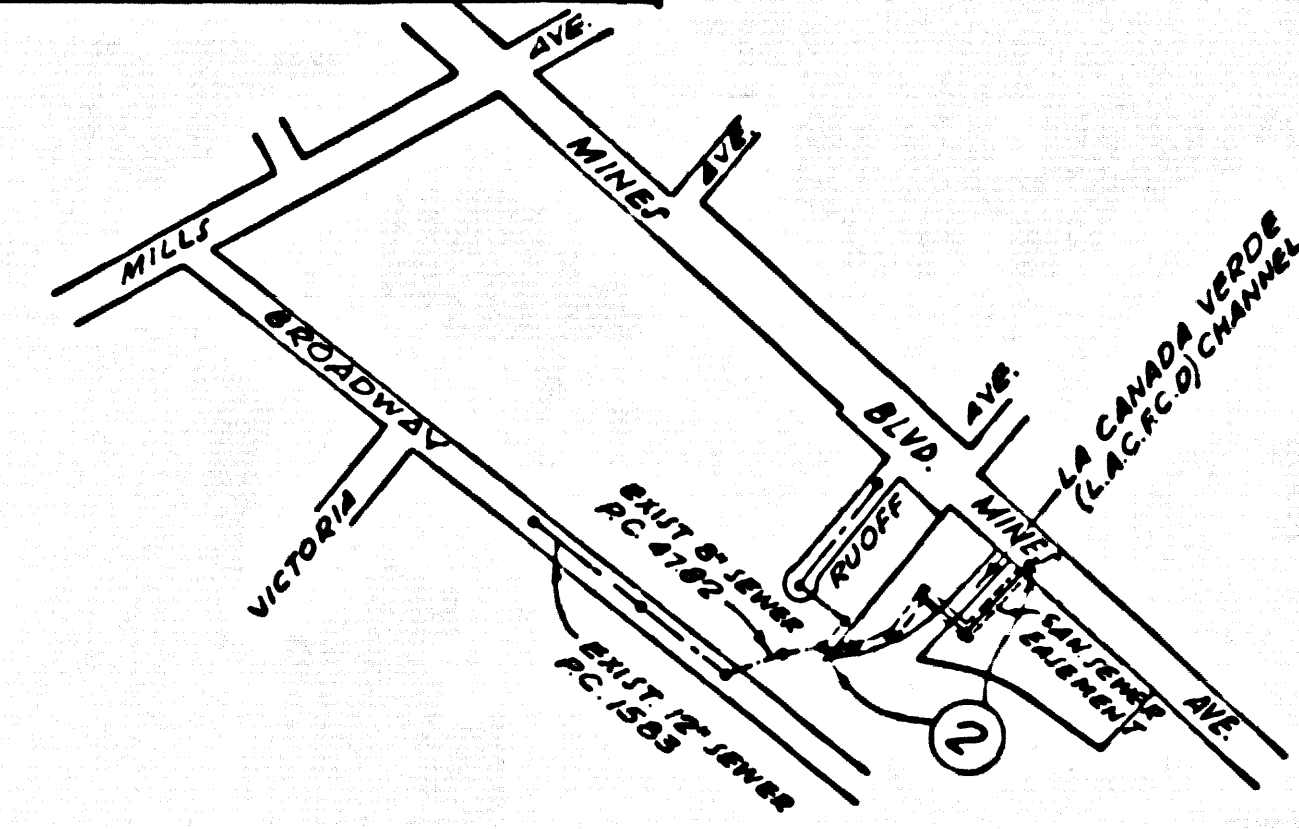


B.M. BY 2553 ELEV. 157.166  
 L & T. E. Co. 7th N.B.C.R. @ N.E.  
 Cor. Mills Ave. & Mines Blvd. 28th  
 E & 96th N & Int.  
 Jan 10 Fe QUAD. 1965

**REVISIONS**

1	REVISED ALIGNMENT BETWEEN STA. 0+00.93 AND STA. 8+96.07
APPROVED: <i>Quilla E. McCollon</i> 8/16/72 OFFICE OF COUNTY ENGINEER - R.C.E. 15931	
2	REVISED ALIGNMENT BETWEEN STA. 2+168.7 AND STA. 6+12.33
APPROVED: <i>Quilla E. McCollon</i> 9/5/72 OFFICE OF COUNTY ENGINEER - R.C.E. 15931	



**INDEX MAP**  
 SCALE 1"=600'  
 P.C. No. 8712

**NOTE**  
 Elevation of bottom of storm drain channel to be verified prior to construction operation

**NOTICE TO CONTRACTOR**

The existence and location of any underground utility pipes or structures shown on these plans are obtained by a search of available records. To the best of my knowledge there are no existing utilities, except as shown on these plans. The contractor is required to take due precautionary measures to protect the utility lines shown and any other lines not of record or not shown on these plans.

*Lewis E. Cutts*  
 Lewis E. Cutts R.C.E. No. 11585

- GENERAL NOTES:**
- ELEVATIONS ARE IN FEET ABOVE M.S.C. & G.E. SEA LEVEL DATUM OF 1929.
  - NO REVISIONS SHALL BE MADE IN THESE PLANS WITHOUT THE APPROVAL OF THE COUNTY ENGINEER.
  - NO RESPONSIBILITY OF THE COUNTY ENGINEER WILL BE HELD FOR ANY PORTION OF THE WORK.
  - GRADES TO WHICH THE IMPROVEMENT IS TO BE CONSTRUCTED ARE SHOWN ON PLANS AND HOUSES. GRADE POINTS FOR TOP OF CURBS, CENTER LINE OF STREETS, OR CENTER LINE OF ALLEYS ARE SHOWN BY CIRCLES OR TRIANGLES AT ALL POINTS BETWEEN DESIGNATED POINTS THE GRADE SHALL BE ESTABLISHED SO AS TO CONFORM TO A STRAIGHT LINE DRAWN BETWEEN SAID DESIGNATED POINTS.
  - THE PRIVATE ENGINEER SHALL FURNISH THE COUNTY ENGINEER WITH GRADE SHEETS AND STATIONING FOR ALL HOUSE LATERALS AND "T" BRANCHES AND SHALL PROVIDE STAKES FOR THEM AT THEIR PROPER LOCATIONS WITH STATIONINGS PLAINLY MARKED. ALL HOUSE LATERALS SHALL BE CONSTRUCTED IN A STRAIGHT ALIGNMENT AT RIGHT ANGLES FROM THE MAIN LINE SEWER EXCEPT AS SHOWN ON THE PLANS. HOUSE LATERALS FROM CHIMNEYS SHALL NOT HAVE AN ANGLE OF LESS THAN 45° WITH THE MAIN LINE SEWER. ANY CHANGE IN ALIGNMENT SHALL BE REQUESTED IN WRITING BY THE PRIVATE ENGINEER.
  - THE PRIVATE ENGINEER SHALL FURNISH THE HOUSE LATERAL SUPPLY AT THE PROPERTY LINE BELOW THE TOP OF CURB ELEVATION FOR EACH HOUSE LATERAL ON THE GRADE SHEET.
  - BEFORE WORK CAN BE STARTED, THE CONTRACTOR MUST OBTAIN A PERMIT TO EXCAVATE IN COUNTY STREETS FROM THE L.A. COUNTY ROAD DEPT., DISTRICT OFFICE NO. 8, AND PAY A FEE TO THE COUNTY ENGINEER, 608 E. 6th ST., REGIONAL OFFICE, TO COVER THE COST OF CONSTRUCTION INSPECTION AND CROSS PLANS.
  - IF WORK IS TO BE DONE IN A STATE HIGHWAY, A PERMIT MUST BE OBTAINED FROM THE STATE OF CALIFORNIA, DIVISION OF HIGHWAYS, 120 SOUTH BRIND STREET, LOS ANGELES, CALIFORNIA.
  - APPROVAL OF THIS PLAN BY THE COUNTY OF LOS ANGELES DOES NOT CONSTITUTE A REPRESENTATION AS TO THE ACCURACY OF THE LOCATION OF OR THE EXISTENCE OR NON-EXISTENCE OF ANY UNDERGROUND UTILITY PIPE, OR STRUCTURE WITHIN THE LIMITS OF THIS PROJECT. THIS NOTE APPLIES TO ALL PAGES.
  - REFER TO SECTION 7-16.41 OF THE STANDARD SPECIFICATIONS, REGARDING SAFETY ORDERS.
- County Sanitation Division shall be notified prior to the following so that required inspection can be made (Phone 337-1025 or 638-1181)  
 acceptance of the project.
- No connections for the disposal of industrial wastes shall be made to sewers shown on these plans without written permission from the Chief Engineer and General Manager of the County Sanitation Division.

- CONSTRUCTION NOTES:**
- WORK SHALL BE CONSTRUCTED ACCORDING TO THE STANDARD SPECIFICATIONS FOR PUBLIC WORKS CONSTRUCTION (1970 EDITION WITH 1971 SUPPLEMENTS) AND COUNTY ENGINEER SPECIAL PROVISIONS FOR THE CONSTRUCTION OF SANITARY SEWERS DATED APRIL 10, 1972, AND SHALL BE PROSECUTED ONLY IN THE PRESENCE OF THE COUNTY ENGINEER.
  - THE CONTRACTOR SHALL NOTIFY THE CONSTRUCTION DIVISION BY TELEPHONE, AT LAMSON 8-07, EXT. 8150, AT LEAST TWENTY-FOUR HOURS BEFORE STARTING ANY WORK UNDER THIS CONTRACT.
  - HOUSE LATERALS TO BE CONSTRUCTED WITH INVERTS AT PROJECT LINE & FEET BELOW CURB GRADE EXCEPT AS NOTED.
  - WYE OR TEE BRANCHES MAY BE USED FOR CONNECTIONS TO MAINLINE SEWERS EXCEPT AS NOTED.
  - ALL STRUCTURES SHALL BE EITHER BRICK MANHOLES PER S-23 OR PRECAST CONCRETE MANHOLES PER S-24, EXCEPT AS NOTED.
  - PROVIDE STAKES ON THE PROPERTY LINE OR PROPERTY LINES PRODUCED AT RIGHT ANGLES TO THE SEWER LINE AT THE CENTER LINE OF EACH MANHOLE.
  - MANHOLE TOPS IN UNIMPROVED RIGHTS OF WAY TO BE 6 INCHES ABOVE FINISHED GRADE.
  - VERTICAL CLAY PIPE JOINTS SHALL BE TYPE "B", "F", OR "G" PER STANDARD SPECIFICATIONS SECTION 308-2.
  - IF A COVER POLE IS WITHIN THREE FEET OF THE SEWER, THE SEWER SHALL BE ENCASED PER S-23, CASE 2, TWO FEET ON EACH SIDE FROM THE POINT OF INTERFERENCE.
  - IF DURING THE COURSE OF CONSTRUCTION IT IS DETERMINED THAT THERE IS LESS THAN FOUR FEET OF COVER OVER THE TOP OF A MAIN LINE OR HOUSE LATERAL C.P. SEWER WHICH IS NOT INDICATED ON THE PLANS, THE PIPE SHALL BE ENCASED PER S-23, CASE 2, UNLESS OTHERWISE APPROVED BY THE COUNTY ENGINEER.
  - ALL JOINTS BETWEEN CAST IRON PIPE AND VITRIFIED CLAY PIPE SHALL BE MADE WITH A RUBBER SLEEVE JOINT, TYPE "C" OR "D", FIFTH EDITION IF NECESSARY PER STANDARD SPECIFICATIONS, SECTION 308-2.
  - SEWERS TO BE TRENCH FOR GRADE PER SECTION 304-1.27 OF THE STANDARD SPECIFICATIONS AND SPECIAL PROVISIONS.
  - RESURFACE ALL TRENCHES WITH PAVED AREAS TO MEET L.A. COUNTY ROAD DEPT. OR CALIFORNIA STATE HIGHWAY REQUIREMENTS IN ACCORDANCE WITH PERMITS.

PROFILE, ALIGNMENT AND GRADE OF  
**SANITARY SEWERS** PAGE 1  
 TO BE CONSTRUCTED IN  
 R/W, SE OF MINES AVE. AND RUOFF AVE

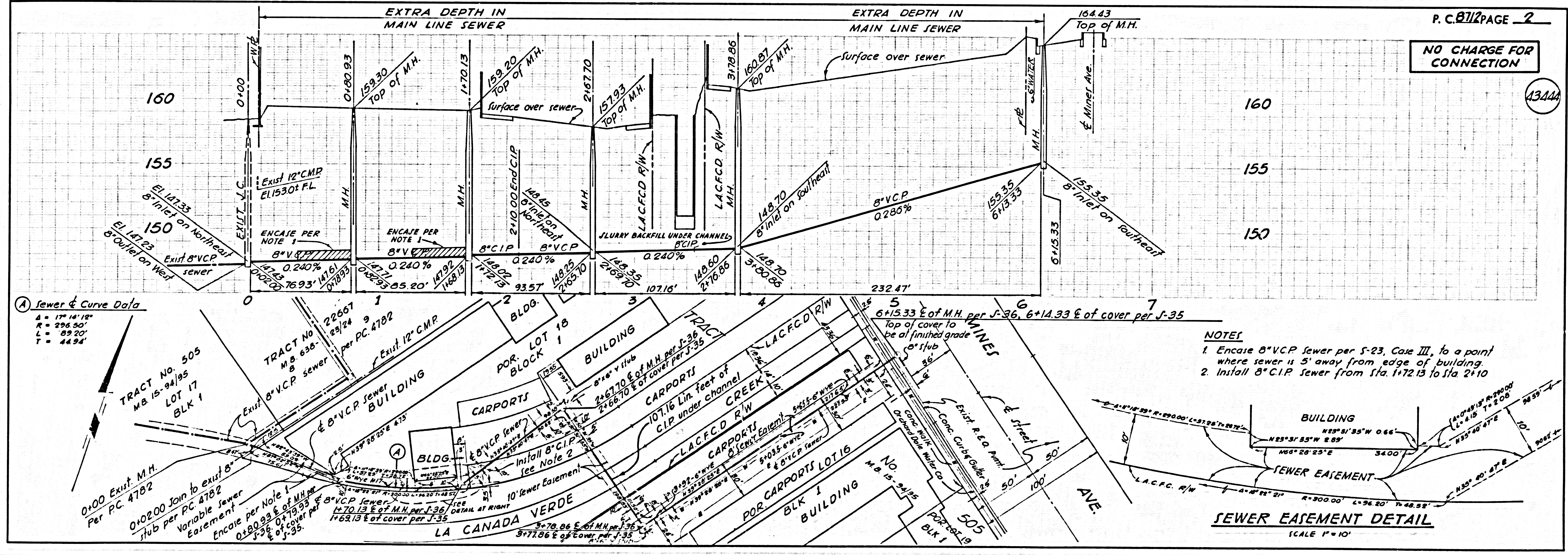
PRIVATE CONTRACT NO. 8712

W.S. 34  
 1 SHEET, 2 PAGES  
 SCALE: VERT. 1"=4'  
 HORIZ. 1"=40'  
 PREPARED IN THE OFFICES OF  
**GOLDEN WEST ENGINEERING**  
 8030 E FLORENCE AVENUE  
 DOWNEY, CALIFORNIA 90042  
 BY: *Lewis E. Cutts*  
 REG. C. E. No. 11502

THE FOLLOWING LATEST REVISED STANDARD PLANS ON FILE IN THE OFFICE OF THE COUNTY ENGINEER SHALL APPLY IN THE CONSTRUCTION OF THIS PROJECT.

LEGEND	S-1
MINIMUM PUBLIC SAFETY REQUIREMENTS	S-2
BRICK MANHOLES	S-3
STANDARD MANHOLE SET	S-17
BEDDING FOR SEWER PIPE	S-21
CRADLING AND ENCASEMENT	S-23
WYE OR TEE SUPPORT	S-26
ALLOWABLE TRENCH WIDTH	S-28
LOCKING MANHOLE FRAME AND COVER	S-29
NON-REINFORCED PRECAST CONCRETE MANHOLE	S-30

COUNTY OF LOS ANGELES, CALIFORNIA  
 HARVEY I. BRANDT, COUNTY ENGINEER JOHN D. PARKHURST, CHIEF ENGINEER  
 APPROVED: *Lewis E. Cutts* 8/16/72 APPROVED: *J. Parkhurst* 8/16/72  
 REGIONAL ENGINEER DATE OFFICE ENGINEER  
 CHECKED: *Quilla E. McCollon* 8/16/72  
 REG. C.E. NO. 15931 DATE 8/16/72  
 WHITTIER BLDG. DIST. No. 11 J.N. 0371.32



(A) Sewer & Curve Data  
 Δ = 17° 14' 18"  
 R = 296.50'  
 L = 89.20'  
 T = 44.94'

- NOTE:**
- Encase 8" VCP Sewer per S-23, Case III, to a point where sewer is 5' away from edge of building.
  - Install 8" C.I.P. Sewer from Sta. 1+72.13 to Sta. 2+10.

**SEWER EASEMENT DETAIL**  
 SCALE 1"=10'