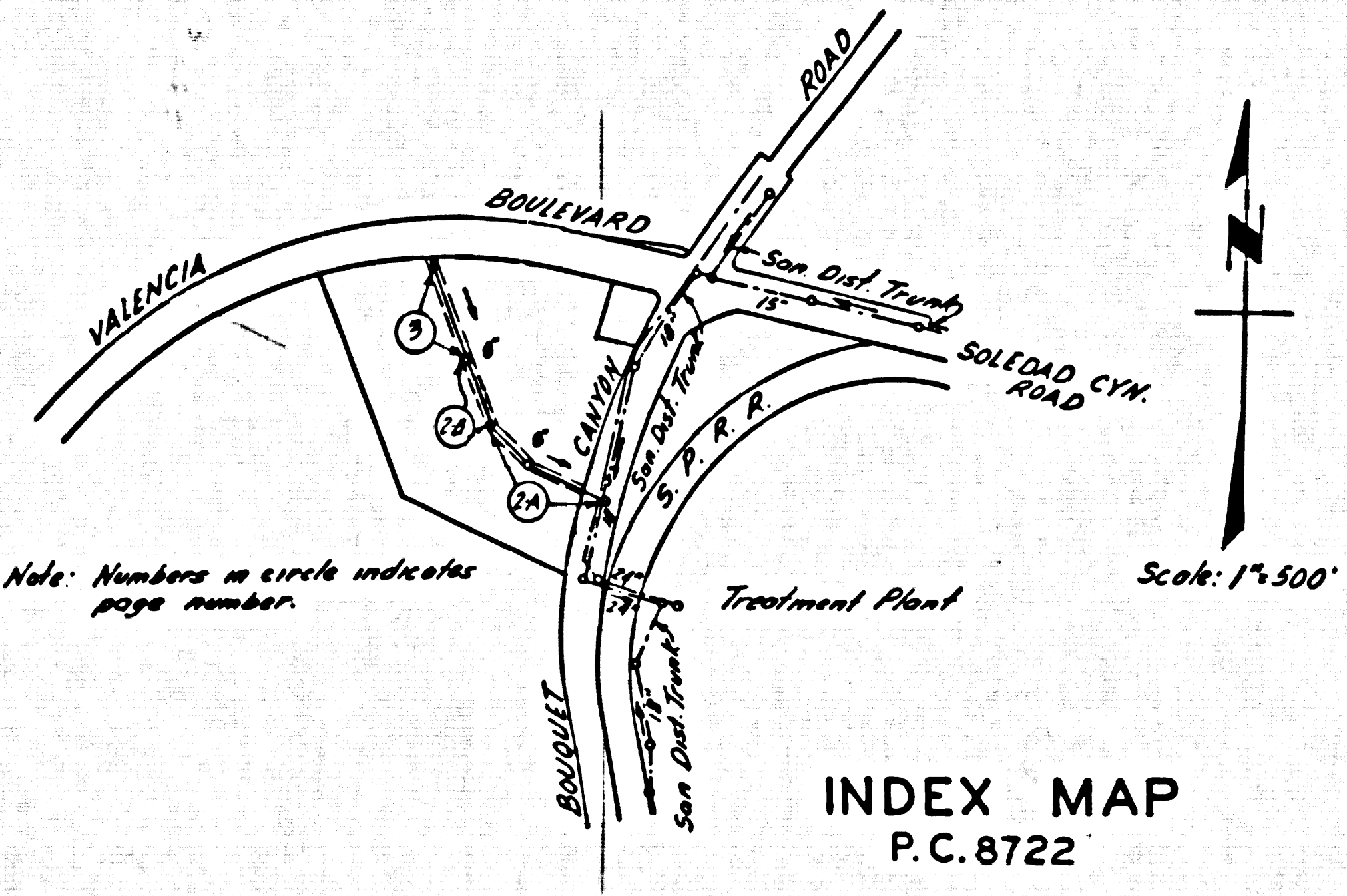


B.M. B.L. 2969 ELEV. 1163.905
 RDBM Top E of Bouquet Canyon Rd
 BCR on NE of Sabod Canyon Rd.
 Bouquet Canyon Rd 125' N 14' E 1/4 mi
 Newhall QUAD. 1965

PRIVATE ENGINEERS NOTICE TO CONTRACTORS
 The existence and location of any underground utility or structure shown on these plans are obtained by a search of the available records to the best of our knowledge there are no existing utilities except as shown on this map. The contractor is required to take due precautionary measures to protect the utility lines not of record or not shown on this drawing.

E.L. Bolten Jr.
 E.L. Bolten Jr. R.C.E. 10533

Notice to Contractor:
 Contractor shall notify Pacific Telephone (255-0072) prior to commencement of excavation in vicinity of GHTD as shown on these plans.
 Contractor shall notify Sanitation District 774-7770 prior to commencing excavation under 15' effluent sewer at Sta. 1+10



SPECIAL BACKFILL IN BASEMENT CONSTRUCTION:
 A. BACKFILL TRENCH AND REPLACE OTHER EARTH SO AS TO ACHIEVE THE DENSITY OR FINISHED GRADES AND SLOPES SHOWN ON THE GRADING PLAN APPROVED FOR THIS DEVELOPMENT BY THE BUILDING AND SAFETY DIVISION.
 B. ALL BACKFILL AND SALTIN PLACED SHALL BE COMPACTED TO A MINIMUM OF 90% OF MAXIMUM DENSITY PER ASTM STANDARD METHOD OF TEST D 1557 AS INDICATED. CERTIFICATION OF SUCH COMPACTION SHALL BE SUBMITTED TO THE CONSTRUCTION DIVISION.

"FULL COMPLIANCE WITH SECTION 906.1.9.3 OF THE SPECIAL PROVISIONS WILL BE REQUIRED FOR BACKFILL IN STREETS. CERTIFICATION OF BACKFILL COMPACTION AND SAND EQUIVALENTS BY A QUALIFIED, REGISTERED TESTING LABORATORY SHALL BE PROVIDED BY THE PERMITTEE PRIOR TO THE ISSUANCE OF A CERTIFICATE OF PARTIAL ACCEPTANCE."

County Sanitation District shall be notified prior to the following so that required inspection can be made (Phone 282-1085 x 828-1111)
 Commencement of construction of manhole on District trunk sewer.

COLLECT CHARGES AS INDICATED

NEWHALL BLDG. DIST. NO. 8.2

NOTE:

- SHOW EXISTENCE OF ALL CONSTRUCTION MATERIALS AS SHOWN BY THE EXISTING RECORDS.
- PROVIDE PLANS ON THE PROPERTY LINE OR PROPERTY LINES PRODUCED AT RIGHT ANGLES TO THE SEWER LINE AT THE CENTER LINE OF EACH MANHOLE.
- NO REPRESENTATIVE OF THE COUNTY ENGINEER WILL SURVEY OR LAY OUT ANY PORTION OF THE WORK.
- THE PRIVATE ENGINEER SHALL FURNISH THE COUNTY ENGINEER WITH GRADE SHEETS AND STATIONING FOR ALL "T" OR "Y" BRANCHES AND SHALL PROVIDE STAKES FOR THEM AT THEIR PROPER LOCATIONS WITH STATIONING PLAINLY MARKED. ALL HOUSE LATERALS SHALL BE CONSTRUCTED IN A STRAIGHT ALIGNMENT AT RIGHT ANGLES FROM THE MAIN LINE SEWER EXCEPT AS SHOWN ON THE PLANS. HOUSE LATERALS FROM CHIMNEYS SHALL NOT HAVE AN ANGLE OF LESS THAN 45° WITH THE MAIN LINE SEWER. ANY CHANGE IN ALIGNMENT SHALL BE REQUESTED IN WRITING BY THE PRIVATE ENGINEER.
- THE CONTRACTOR SHALL BE RESPONSIBLE FOR THE PROTECTION AND SUPPORT OF ALL EXISTING UTILITIES AND STRUCTURES.
- NO REVISIONS SHALL BE MADE IN THESE PLANS WITHOUT THE APPROVAL OF THE COUNTY ENGINEER.
- THE CONTRACTOR SHALL NOTIFY THE CONSTRUCTION DIVISION BY TELEPHONE, MADISON 9-67, EXT. 8181, AT LEAST TWENTY-FOUR HOURS BEFORE STARTING ANY WORK UNDER THIS CONTRACT.
- ALL STRUCTURES SHALL BE WITHIN BRACE MANHOLES PER S-3 OR PRECAST CONCRETE MANHOLES PER S-2, EXCEPT AS NOTED.
- "T" OR "Y" BRANCHES MAY BE USED FOR CONNECTIONS TO MAINLINE SEWERS EXCEPT AS NOTED.
- MANHOLE DEPTH IN UNIMPROVED AREAS OF WHAT TO BE LEVISED BY THE PRIVATE ENGINEER.
- USE EXTRA STRENGTH PIPE, ALL PIPE IS STANDARD DEPTH EXCEPT AS NOTED.
- VERTICAL CLAY PIPE JOINTS SHALL BE TYPE "B", "C", OR "D" PER STANDARD SPECIFICATIONS SECTION 300.5.
- IF A FLOOR POLE IS WITHIN THREE FEET OF THE SEWER, THE SEWER SHALL BE ENCASED, PER S-2, TWO FEET ON EACH SIDE FROM THE POINT OF INTERFERENCE.
- IF BY REASON OF THE COURSE OF CONSTRUCTION IT IS DETERMINED THAT THERE IS LESS THAN FOUR FEET OF COVER OVER THE TOP OF A MAIN LINE OR HOUSE LATERAL V.C.P. SEWER WHICH IS NOT INDICATED ON THE PLANS, THE PIPE SHALL BE ENCASED PER S-2, UNLESS OTHERWISE APPROVED BY THE COUNTY ENGINEER.
- RESURFACE ALL TRENCHES WITHIN PAVED AREAS TO MEET L.A. COUNTY ROAD DEPT. OR CALIFORNIA STATE HIGHWAY REQUIREMENTS IN ACCORDANCE WITH PERMITS.
- SEWERS TO BE TESTED FOR LEAKAGE PER SECTION 306.2.2.7 OF THE STANDARD SPECIFICATIONS.
- REFER TO SECTION 714.1.1 OF THE STANDARD SPECIFICATIONS, REGARDING SAFETY ORDERS.
- ALL JOINTS BETWEEN CLAY PIPE AND VITRIFIED CLAY PIPE SHALL BE MADE WITH A RUBBER SLEEVE JOINT, TYPE "C" OR "D", WITH BUSHING IF NECESSARY PER STANDARD SPECIFICATIONS, SECTION 300.5.

THE FOLLOWING LATEST REVISED STANDARD PLANS ON FILE IN THE OFFICE OF THE COUNTY ENGINEER SHALL APPLY IN THE CONSTRUCTION OF THIS PROJECT:

LEGEND	S-1
MINIMUM PUBLIC SAFETY REQUIREMENTS	S-2
BRICK MANHOLE	S-3
NON-REINFORCED PRECAST CONCRETE MANHOLE	S-4
LOCKING MANHOLE FRAME AND COVER	S-5
STANDARD MANHOLE STEP	S-6
BEDDING FOR SEWER PIPE	S-7
CHASING AND ENCASEMENT	S-8
PIPE ON THE SURFACE	S-9
ALLOWABLE TRENCH WIDTHS	S-10

STANDARD MANHOLE
 STANDARD "24" MANHOLE FRAME AND COVER
 IN CONNECTION WITH THE STOPPAGE OF INDUSTRIAL WASTE SHALL BE MADE TO WORKERS SHOWN ON THESE DRAWINGS WITHOUT WRITTEN PERMISSION FROM THE DISTRICT ENGINEER OR GENERAL MANAGER OF THE COUNTY SANITATION DISTRICTS.

PROFILE, ALIGNMENT AND GRADE OF
SANITARY SEWERS
 P.C. 8722
 PAGE 1
 CONSTRUCTED IN

R/W FOR K MART STORE
PRIVATE CONTRACT NO. 8722
 INDEX 2645-121
 W.S. 62
 2 SHEETS; 3 PAGES
 SCALE: VERT. 1"=4' HORIZ. 1"=40'
 APRIL, 1971
 PREPARED IN THE OFFICES OF
ANDEL ENGINEERING COMPANY
 BY: *E.L. Bolten Jr.*
 REG. C. E. NO. 10533

NOTE:
 GRADES TO WHICH THIS IMPROVEMENT IS TO BE CONSTRUCTED ARE SHOWN ON PLANS AND PROFILES. GRADE POINTS FOR TOP OF CURBS, CENTER LINE OF STREETS, OR CENTER LINE OF ALLEYS ARE SHOWN BY CIRCLES ON PROFILES. AT ALL POINTS BETWEEN DESIGNATED POINTS THE GRADE SHALL BE ESTABLISHED SO AS TO CONFORM TO A STRAIGHT LINE DRAWN BETWEEN SAID DESIGNATED POINTS. ELEVATIONS ARE IN FEET ABOVE M.S.C. & M.S.L. SEA LEVEL DATUM OF 1929.

WORK SHALL BE CONSTRUCTED ACCORDING TO THE STANDARD SPECIFICATIONS FOR PUBLIC WORKS CONSTRUCTION (1971) - EDITION AND COUNTY ENGINEER SPECIAL PROVISIONS FOR THE CONSTRUCTION OF SANITARY SEWERS DATED APRIL 1970 AND SHALL BE APPROVED BY THE COUNTY ENGINEER.

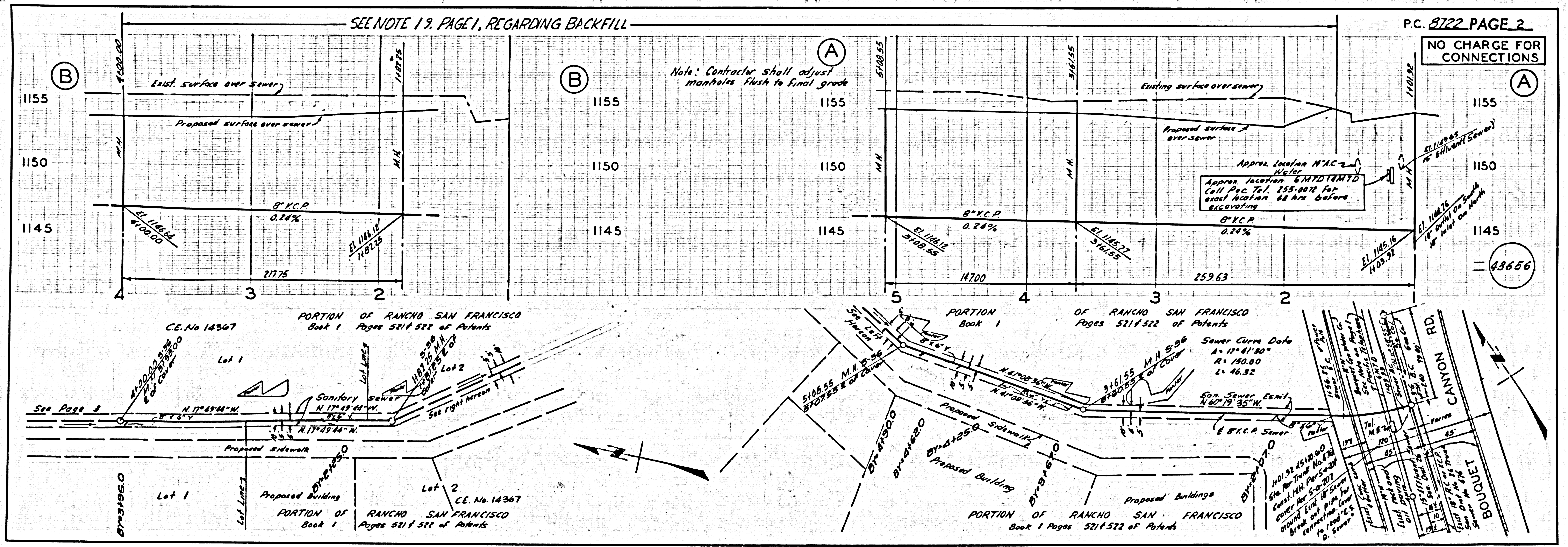
BEFORE WORK CAN BE STARTED, THE CONTRACTOR MUST OBTAIN A PERMIT TO EXCAVATE IN COUNTY STREETS FROM THE L.A. COUNTY ROAD DEPT., DISTRICT OFFICE NO. 8, AND PERMIT TO THE COUNTY ENGINEER, ROOM 800, COUNTY ENGINEERING BUILDING, 100 WEST SECOND STREET OR DISTRICT OFFICE, DISTRICT OFFICE, SUFFICIENT TO COVER THE COURSE OF CONSTRUCTION INSPECTION AND RECORD PLANS.

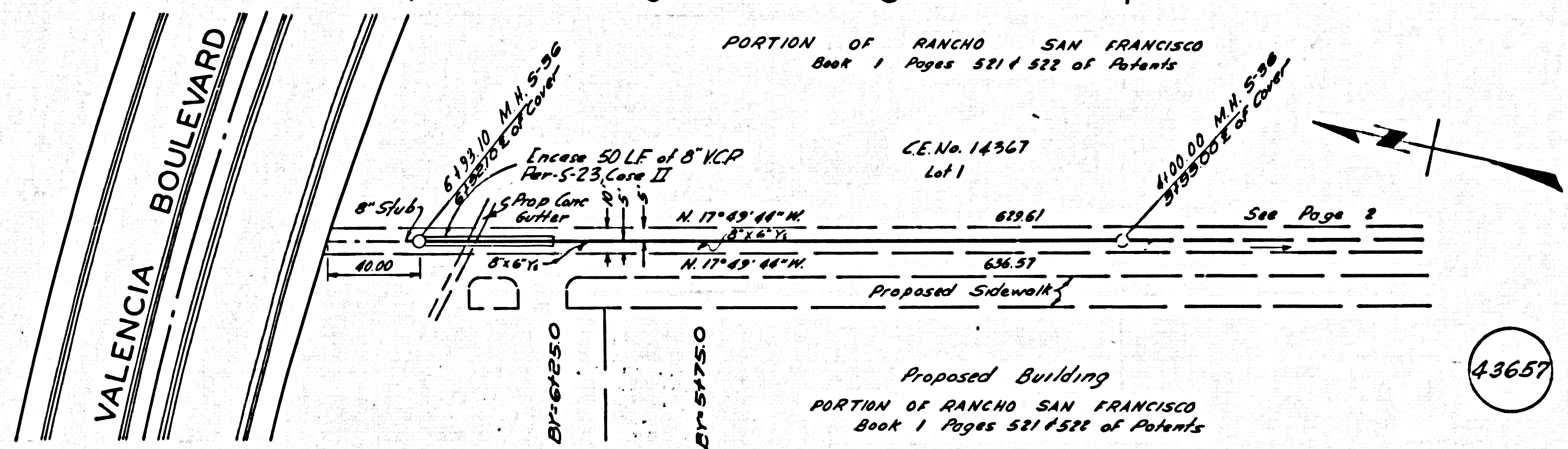
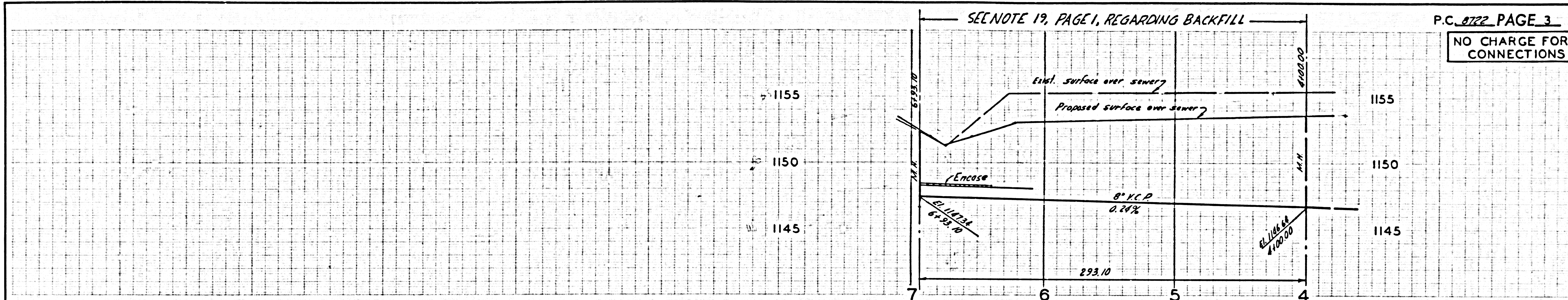
APPROVAL OF THE PLAN BY THE COUNTY OF LOS ANGELES DOES NOT CONSTITUTE A REPRESENTATION AS TO THE ACCURACY OF THE LOCATION OR OF THE EXISTENCE OR NON-EXISTENCE OF ANY UNDERGROUND UTILITY PIPE, OR STRUCTURE WITHIN THE LIMITS OF THE PROJECT. THIS NOTE APPLIES TO ALL PAGES.

IF WORK IS TO BE DONE IN A STATE HIGHWAY, A PERMIT MUST BE OBTAINED FROM THE STATE OF CALIFORNIA, DIVISION OF HIGHWAY, 130 SOUTH SPRING STREET, LOS ANGELES, CALIFORNIA.

COUNTY OF LOS ANGELES, CALIFORNIA
 HARVEY T. BRANDT COUNTY ENGINEER J. D. PARKURST, CHIEF ENGINEER
 APPROVED BY: *E.L. Bolten Jr.* 1/24/72 APPROVED BY: *J. D. Parkurst*
 REGIONAL ENGINEER DATE OFFICE ENGINEER
 CHECKED BY: *R. J. ...* DATE
 REG. C. E. NO. 14390 DATE

J.N. 0571.37





43657

PAGE