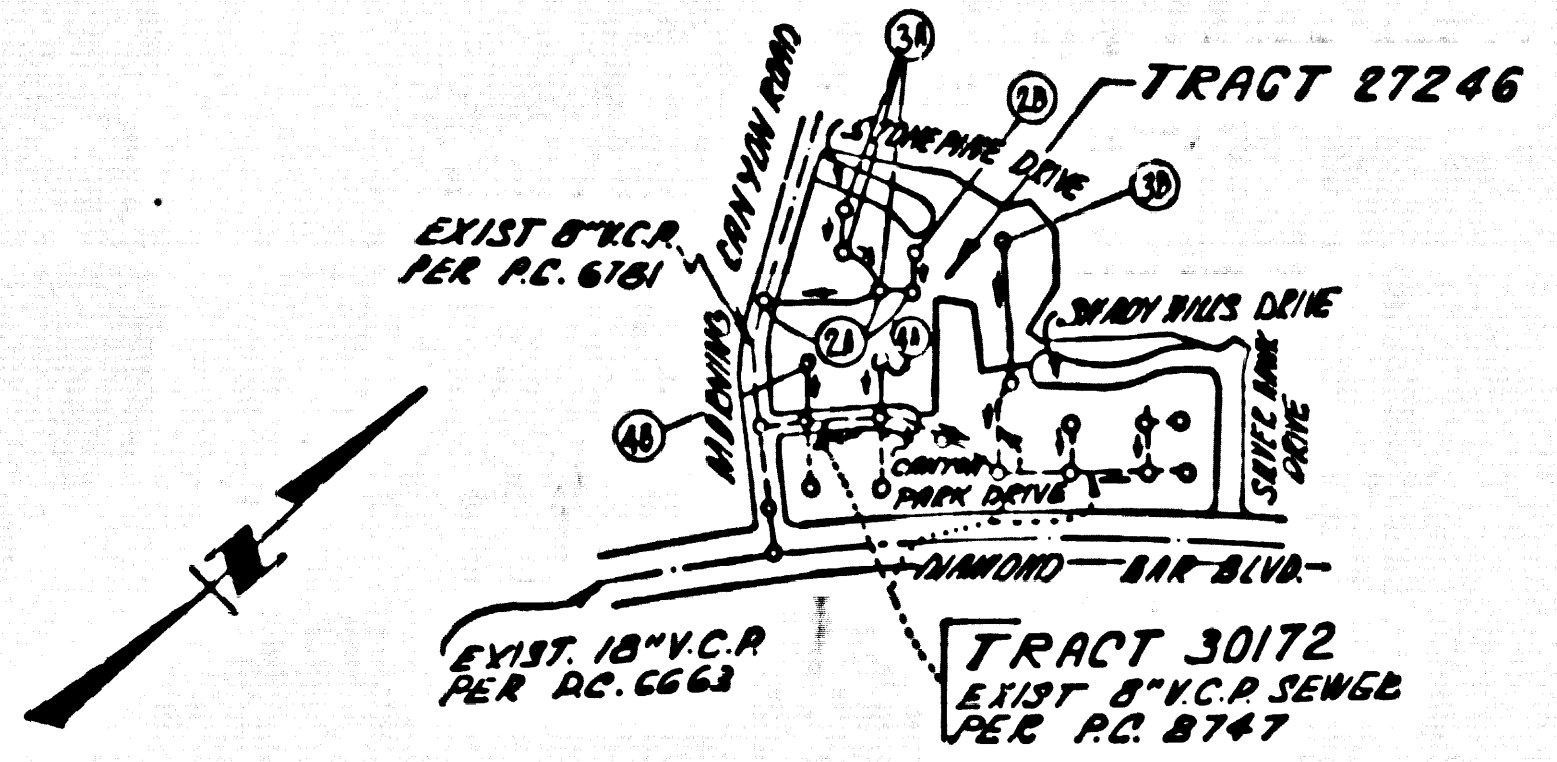


B.M. S.G. 2.22 ELEV. 772.294
 P.O.B. IN THE CORNER NEAR INT.
 DIAMOND BAR BLVD. & PRINCEWILLER RD.
 2.24' N. BY 1.26' E. BY C.L. INT.
 DITREBEN QUAD. 19.25.



INDEX MAP
 TRACT No. 27246
 P.C. 8724
 SCALE: 1" = 600'

No connections for the disposal of industrial wastes shall be made to sewers shown on these drawings without written permission from the Chief Engineer and General Manager of the County Sanitation Districts.

County Sanitation Districts shall be notified prior to the following so that required inspection can be made (Phone 337-1025 - - 4-6-66-66)

PRIVATE ENGINEERS
 NOTICE TO CONTRACTOR
 THE EXISTENCE AND LOCATION OF ANY UNDERGROUND UTILITY PIPES OR STRUCTURES SHOWN ON THESE PLANS ARE OBTAINED BY A SEARCH OF THE AVAILABLE RECORDS TO THE BEST OF OUR KNOWLEDGE THERE ARE NO EXISTING UTILITIES EXCEPT AS SHOWN ON THIS MAP.
 THE CONTRACTOR IS REQUIRED TO TAKE PRECAUTIONARY MEASURES TO PROTECT THE UTILITY LINES SHOWN AND ANY OTHER LINES NOT OF RECORD OR NOT SHOWN ON THIS DRAWING.

ISSUE NO PERMITS FOR PAGES 3B, 4A & 4B UNTIL P.C. 8747 IS ACCEPTED.

15. SPECIAL BACKFILL IN DESIGNATED AREAS:
 (A) BACKFILL TRENCH AND REPLACE OTHER EARTH REMOVED SO AS TO RESTORE THE INTERIOR OF FINISHED GRADES AND SLOPES SHOWN ON THE DRAWINGS. BACKFILL SHALL BE APPROVED FOR THIS TRACT BY THE BUILDING AND SAFETY DIVISION.
 (B) ALL BACKFILL AND EARTH REPLACED SHALL BE COMPACTED TO A MINIMUM OF 95% OF MAXIMUM DENSITY PER A.S.T.M. STANDARD METHOD OF TEST D698-57 AS MODIFIED ACCEPTABLE CERTIFICATION OF EACH COMPACTOR SHALL BE SUBMITTED TO THE CONSTRUCTION DIVISION.

GENERAL NOTES:

- ELEVATIONS ARE IN FEET ABOVE U.S.C. & G.S. SEA LEVEL DATUM OF 1929.
- NO REVISIONS SHALL BE MADE IN THESE PLANS WITHOUT THE APPROVAL OF THE COUNTY ENGINEER.
- NO REPRESENTATIVE OF THE COUNTY ENGINEER WILL SURVEY OR LAY OUT ANY PORTION OF THE WORK.
- GRADES TO WHICH THIS IMPROVEMENT IS TO BE CONSTRUCTED ARE SHOWN ON PLANS AND PROFILES. GRADE POINTS FOR TOP OF CURBS, CENTER LINE OF STREETS, OR CENTER LINE OF ALLEYS ARE SHOWN BY CIRCLES ON PROFILES. AT ALL POINTS BETWEEN DESIGNATED POINTS THE GRADE SHALL BE ESTABLISHED SO AS TO CONFORM TO A STRAIGHT LINE DRAWN BETWEEN SAID DESIGNATED POINTS.
- THE PRIVATE ENGINEER SHALL FURNISH THE COUNTY ENGINEER WITH GRADE SHEETS AND STATIONING FOR ALL HOUSE LATERALS AND "T" OR "Y" BRANCHES AND SHALL PROVIDE STAKES FOR THESE AT THEIR PROPER LOCATIONS WITH STATIONING PLAINLY MARKED. ALL HOUSE LATERALS SHALL BE CONSTRUCTED AND SHOWN ON PLANS AND PROFILES. GRADE POINTS FOR TOP OF CURBS, CENTER LINE OF STREETS, OR CENTER LINE OF ALLEYS ARE SHOWN BY CIRCLES ON PROFILES. AT ALL POINTS BETWEEN DESIGNATED POINTS THE GRADE SHALL BE ESTABLISHED SO AS TO CONFORM TO A STRAIGHT LINE DRAWN BETWEEN SAID DESIGNATED POINTS.
- THE PRIVATE ENGINEER SHALL FURNISH THE COUNTY ENGINEER WITH GRADE SHEETS AND STATIONING FOR ALL HOUSE LATERALS AND "T" OR "Y" BRANCHES AND SHALL PROVIDE STAKES FOR THESE AT THEIR PROPER LOCATIONS WITH STATIONING PLAINLY MARKED. ALL HOUSE LATERALS SHALL BE CONSTRUCTED AND SHOWN ON PLANS AND PROFILES. GRADE POINTS FOR TOP OF CURBS, CENTER LINE OF STREETS, OR CENTER LINE OF ALLEYS ARE SHOWN BY CIRCLES ON PROFILES. AT ALL POINTS BETWEEN DESIGNATED POINTS THE GRADE SHALL BE ESTABLISHED SO AS TO CONFORM TO A STRAIGHT LINE DRAWN BETWEEN SAID DESIGNATED POINTS.
- BEFORE WORK CAN BE STARTED, THE CONTRACTOR MUST OBTAIN A PERMIT TO EXCAVATE IN COUNTY STREETS FROM THE L. A. COUNTY ROAD DEPT., DISTRICT OFFICE NO. 1, AND PAY A FEE TO THE COUNTY ENGINEER, ROOM 44 DOWNEY ROAD, BOSTON ST. & IMPERIAL, BOSTON, CALIF. 90007. REGIONAL OFFICE, TO COVER THE COST OF CONSTRUCTION INSPECTION AND RECORD PLANS.
- IF WORK IS TO BE DONE IN A STATE HIGHWAY, A PERMIT MUST BE OBTAINED FROM THE STATE OF CALIFORNIA, DIVISION OF HIGHWAYS, 120 SOUTH SHIRLEY STREET, LOS ANGELES, CALIFORNIA.
- APPROVAL OF THIS PLAN BY THE COUNTY OF LOS ANGELES DOES NOT CONSTITUTE A REPRESENTATION AS TO THE ACCURACY OF THE LOCATION OF OR THE EXISTENCE OR NON-EXISTENCE OF ANY UNDERGROUND UTILITY PIPE, OR STRUCTURE WITHIN THE LIMITS OF THIS PROJECT. THIS NOTE APPLIES TO ALL PAGES.
- REFER TO SECTION 118.4.1 OF THE STANDARD SPECIFICATIONS, REGARDING SAFETY ORDERS.

TRACT No. 27246
 PRIVATE CONTRACT NO. 8724

W.S.
 2 SHEETS, 4 PAGES
 SCALE: VERT. 1" = 5' HORIZ. 1" = 40' MAY, 1972
 PREPARED IN THE OFFICES OF
ERVIN ENGINEERING
 729 So. PARK VIEW ST. LOS ANGELES, CALIF.
 BY: Fred C. Ervin
 REG. C. E. No. 11932

THE FOLLOWING LATEST REVISED STANDARD PLANS ON FILE IN THE OFFICE OF THE COUNTY ENGINEER SHALL APPLY IN THE CONSTRUCTION OF THIS PROJECT:

SEWER	8-1
MINIMUM PUBLIC SAFETY REQUIREMENTS	8-2
BRICK MANHOLE	8-3
STANDARD MANHOLE STOP	8-17
MANHOLE FOR SEWER PIPE	8-18
CHASING AND ENCASEMENT	8-19
WYE OR TE SUPPORT	8-20
ALLOWABLE TRENCH WIDTHS	8-21
LOCKING MANHOLE FRAME AND COVER	8-22
NON-MANHOLE PRECAST CONCRETE MANHOLE	8-23

CONSTRUCTION NOTES:

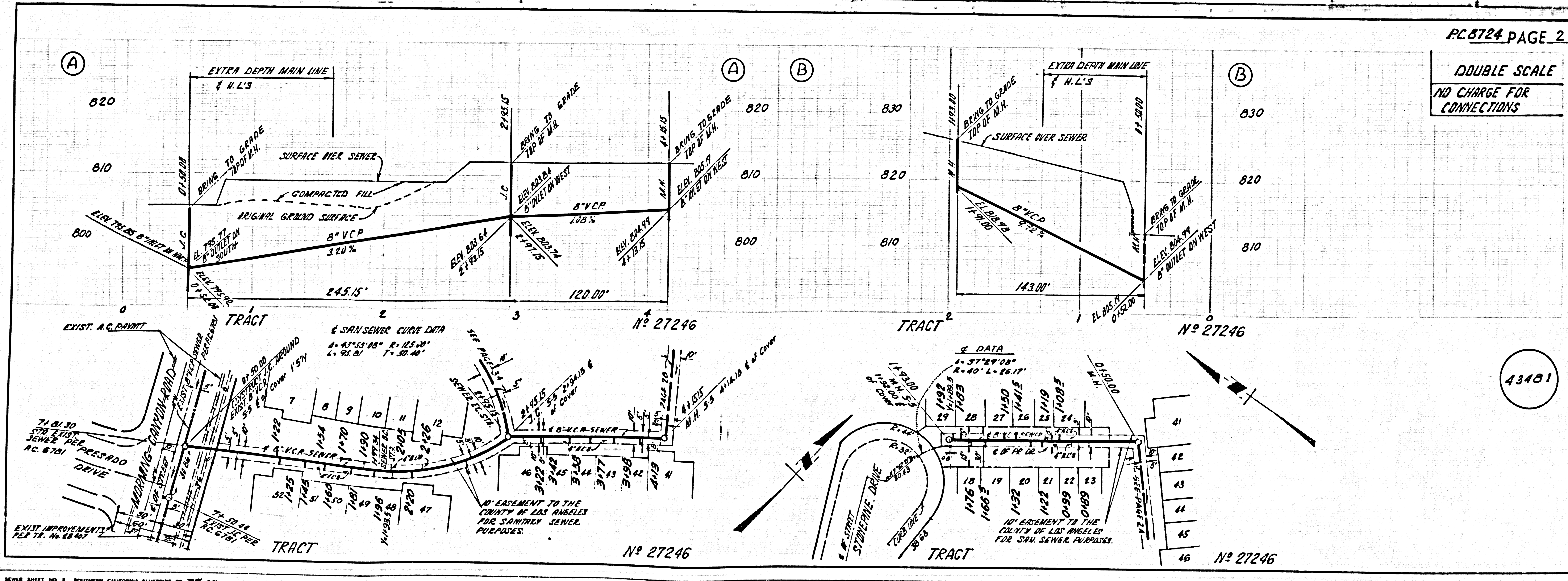
- WORK SHALL BE CONSTRUCTED ACCORDING TO THE STANDARD SPECIFICATIONS FOR PUBLIC WORKS CONSTRUCTION 1970 EDITION WITH ALL SUPPLEMENTS AND COUNTY ENGINEER SPECIAL PROVISIONS FOR THE CONSTRUCTION OF SANITARY SEWERS DATED APRIL 7, 1970. AND SHALL BE PROSECUTED ONLY IN THE PRESENCE OF THE COUNTY ENGINEER.
- THE CONTRACTOR SHALL NOTIFY THE CONSTRUCTION DIVISION BY TELEPHONE, IN PERSON 9:00 A.M. TO 5:00 P.M., AT LEAST TWENTY-FOUR HOURS BEFORE STARTING ANY WORK UNDER THIS CONTRACT.
- HOUSE LATERALS TO BE CONSTRUCTED WITH INVERTS 6" BELOW EDGE OF DRIVEWAY GRADE OR SIDEWALK GRADE EXCEPT AS NOTED.
- WYE OR TE BRANCHES MAY BE USED FOR CONNECTIONS TO MAINLINE SEWERS EXCEPT AS NOTED.
- ALL STRUCTURES SHALL BE EITHER BRICK MANHOLES PER 8-3 OR PRECAST CONCRETE MANHOLES PER 8-17, EXCEPT AS NOTED.
- PROVIDE STAKES ON THE PROPERTY LINE OR PROPERTY LINES PRODUCED AT RIGHT ANGLES TO THE SEWER LINE AT THE CENTER LINE OF EACH MANHOLE.
- MANHOLE TOPS IN UNIMPROVED RIGHTS OF WAY TO BE SIX INCHES ABOVE FINISHED GRADE.
- WITHELD CLAY PIPE JOINTS SHALL BE TYPE "B", "C", OR "D" PER STANDARD SPECIFICATIONS SECTION 308-2.
- IF A POWER POLE IS WITHIN THREE FEET OF THE SEWER, THE SEWER SHALL BE ENCASED, PER 8-23, CASE II, TWO FEET ON EACH SIDE FROM THE POINT OF INTERFERENCE.
- IF DURING THE COURSE OF CONSTRUCTION IT IS DETERMINED THAT THERE IS LESS THAN FOUR FEET OF COVER OVER THE TOP OF A MAIN LINE OR HOUSE LATERAL W.C.P. SEWER WHICH IS NOT INDICATED ON THE PLANS, THE PIPE SHALL BE ENCASED PER 8-23, CASE II UNLESS OTHERWISE APPROVED BY THE COUNTY ENGINEER.
- ALL JOINTS BETWEEN CAST IRON PIPE AND WITHELD CLAY PIPE SHALL BE MADE WITH A RUBBER SLEEVE JOINT, TYPE "C" OR "D", WITHIN BUILDING IF NECESSARY PER STANDARD SPECIFICATIONS, SECTION 308-3.
- SEWERS TO BE TESTED FOR LEAKAGE PER SECTION 308-2.17 OF THE STANDARD SPECIFICATIONS AND SPECIAL PROVISIONS.
- REINFORCE ALL TRENCHES WITHIN PAVED AREAS IN ACCORDANCE WITH THE CALIFORNIA STATE HIGHWAY REQUIREMENTS IN ACCORDANCE WITH PERMITS.
- FULL COMPLIANCE WITH SECTION 108-1.1.1.1.1.1.1 OF THE SPECIAL PROVISIONS WILL BE REQUIRED FOR BACKFILL IN STREETS. CERTIFICATION OF BACKFILL COMPACTION AND GRADE EQUIVALENT BY A QUALIFIED, REGISTERED TESTING LABORATORY SHALL BE PROVIDED BY THE CONTRACTOR PRIOR TO THE ISSUANCE OF A CERTIFICATE OF PARTIAL ACCEPTANCE.

COUNTY OF LOS ANGELES, CALIFORNIA
 HARVEY T. BERNDT, COUNTY ENGINEER
 JOHN D. PARKHURST, CHIEF ENGINEER

APPROVED: *[Signature]* REGIONAL ENGINEER
 APPROVED: *[Signature]* OFFICE ENGINEER
 CHECKED: *[Signature]*

W.C. NO. 19156 DATE 8 June 72

SAN DIMAS BLDG. DIST. 10 I.N. 0258 02



PC 8724 PAGE 2
 DOUBLE SCALE
 NO CHARGE FOR CONNECTIONS

43481

