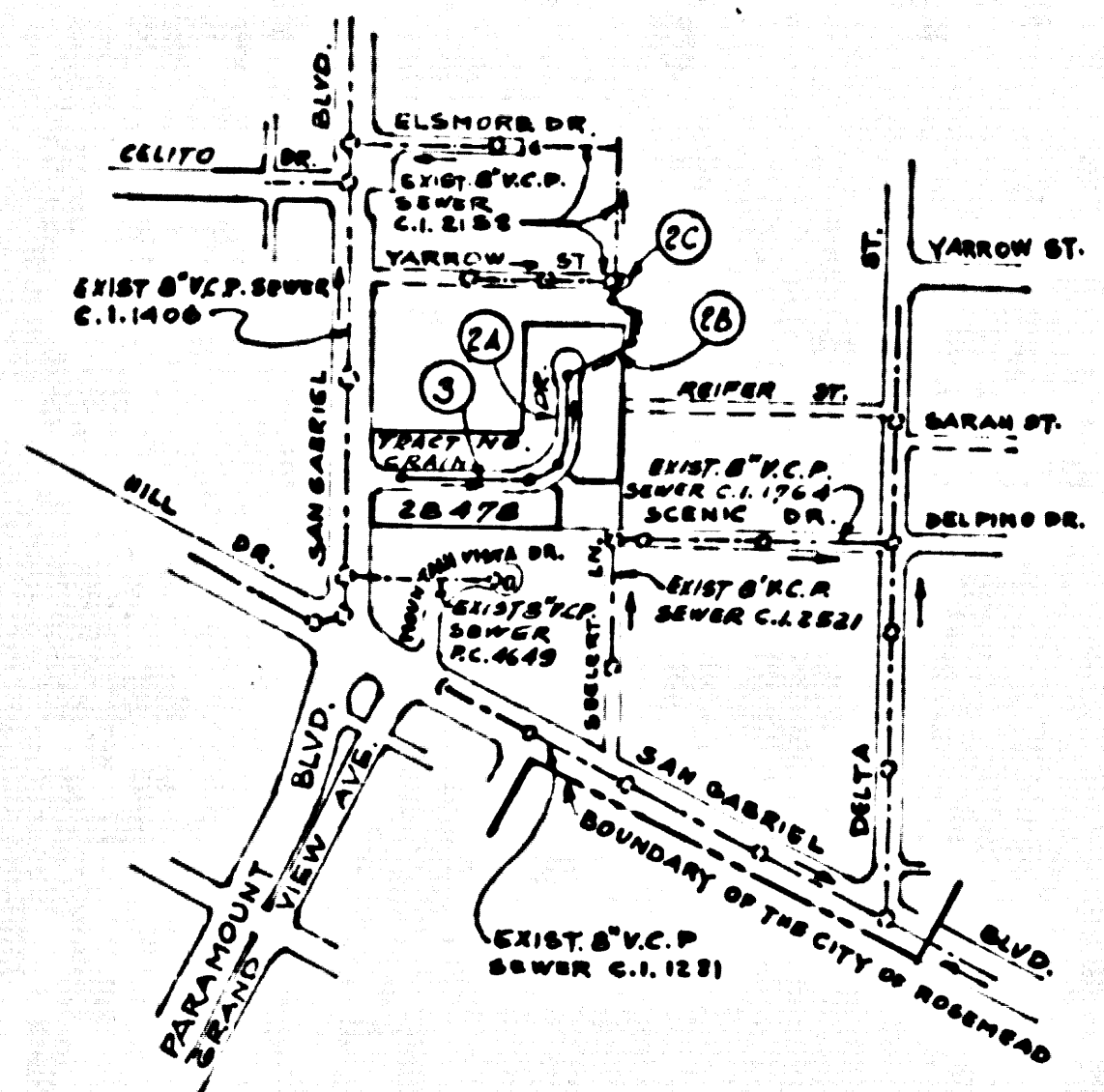


B.M. BY 6235 ELEV. 324.523
 C.S. MON. IN WELL ON C SAN GABRIEL
 BLVD. 46 FT. S BLEEKER ST. MKD.
 (E.L. MONTE B-7A 1940)
 WHITTIER QUAD. 19 70.



INDEX MAP
 SCALE: 1" = 600'
 P.C. 8734

INSTRUCTION NOTE:
 NUMBER IN CIRCLES INDICATE
 PAGE NUMBERS.

THE FOLLOWING LATEST REVISED STANDARD PLANS ON FILE IN
 THE COUNTY ENGINEER'S OFFICE SHALL APPLY IN THE CONSTRUCTION
 OF THIS PROJECT:

LEGEND	
MINIMUM PUBLIC SAFETY REQUIREMENTS	S-1
BRICK MANHOLE	S-2
STANDARD MANHOLE STEP	S-3
BEDDING FOR SUBMER PIPE	S-4
CRADLING AND ENCASUREMENT	S-5
WYE OR TEE SUPPORT	S-6
ALLOWABLE TRENCH WIDTHS	S-7
LOCKING MANHOLE FRAMES AND COVERS	S-8
NON-REINFORCED PRECAST CONCRETE MANHOLE	S-9
SPECIAL HOUSE LATERALS	S-10
RECTANGULAR SHALLOW MANHOLE	S-11
RECTANGULAR MANHOLE FRAME AND COVER	S-12

County Sanitation Districts shall be
 notified prior to the following so
 that required inspections can be made
 (Phone 327-1085 or 638-1161)
 Approval of the project.

No connections for the disposal of
 industrial wastes shall be made to
 sewers shown on these drawings
 without written permission from the
 Chief Engineer and General Manager
 of the County Sanitation Districts.

TEMPLE CITY BLDG. DIST. NO. 5

PROFILE ALIGNMENT AND GRADE OF
 SANITARY SEWERS P.C. 8734
 TO BE CONSTRUCTED IN
 PAGE 1

TRACT NO. 28478

PRIVATE CONTRACT NO. 8734

W.S. 36, D2

2 SHEETS, 3 PAGES

SCALE: HORIZ. 1" = 40' VERT. 1" = 4'

MAY 1972 43311

PREPARED IN THE OFFICES OF
 J. H. EDWARDS CO.
 8811 CRENSHAW PL., TORRANCE, CALIF. 90503

REG. C. E. NO. 11302

FOR LEGEND SEE PLAN NO. S-1

NOTES:

- PROVIDE STAKES ON THE PROPERTY LINE OR PROPERTY LINES PRODUCED AT RIGHT ANGLES TO THE SEWER LINE AT THE CENTER LINE OF EACH MANHOLE.
- NO REPRESENTATIVE OF THE COUNTY ENGINEER WILL SURVEY OR LAY OUT ANY PORTION OF THE WORK.
- THE PRIVATE ENGINEER SHALL FURNISH THE COUNTY ENGINEER WITH GRADE SHEETS AND STATIONING FOR ALL HOUSE LATERALS AND BRANCHES AND SHALL PROVIDE STAKES FOR THEM AT THEIR PROPOSED LOCATIONS WITH STATIONING PLAINLY MARKED AS SHOWN ON THE PLANS. HOUSE LATERALS FROM CHIMNEYS SHALL NOT HAVE AN ANGLE OF LESS THAN 45° WITH THE MAIN LINE SEWER. ANY CHANGE IN ALIGNMENT SHALL BE REQUESTED BY WRITING BY THE PRIVATE ENGINEER.
- THE PRIVATE ENGINEER SHALL FURNISH THE HOUSE LATERAL DEPTH AT THE PROPERTY LINE BELOW THE TOP OF CURB ELEVATION FOR EACH HOUSE LATERAL ON THE GRADE SHEET.
- NO REVISIONS SHALL BE MADE IN THESE PLANS WITHOUT THE APPROVAL OF THE COUNTY ENGINEER.
- THE CONTRACTOR SHALL NOTIFY THE CONSTRUCTION DIVISION BY TELEPHONE, MADISON 5-4747, EXT. 8158, AT LEAST TWENTY-FOUR HOURS BEFORE STARTING ANY WORK UNDER THIS CONTRACT.
- ALL STRUCTURES SHALL BE EITHER BRICK MANHOLES PER S-3 OR PRECAST CONCRETE MANHOLES PER S-9 EXCEPT AS NOTED.
- WYE OR TEE BRANCHES MAY BE USED FOR CONNECTIONS TO MAINLINE SEWERS EXCEPT AS NOTED.
- MANHOLE TOPS IN UNIMPROVED RIGHTS-OF-WAY TO BE SIX INCHES ABOVE FINISHED GRADE.
- USE STEEL STRENGTH PIPE. ALL PIPE IS STANDARD DEPTH EXCEPT AS NOTED.
- VITRIFIED CLAY PIPE JOINTS SHALL BE TYPE "D" OR "E" PER STANDARD SPEC. SEC. 808-2.
- IF A POWER POLE IS WITHIN THREE FEET OF THE SEWER, THE SEWER SHALL BE ENCASED, PER S-23, CASE II TWO FEET ON EACH SIDE FROM THE POINT OF INTERFERENCE.
- IF DURING THE COURSE OF CONSTRUCTION IT IS DETERMINED THAT THERE IS LESS THAN FOUR FEET OF COVER OVER THE TOP OF A MAIN LINE OR HOUSE LATERAL V.C.P. SEWER WHICH IS NOT INDICATED ON THE PLANS, THE PIPE SHALL BE ENCASED PER S-23, CASE II, UNLESS OTHERWISE APPROVED BY THE COUNTY ENGINEER.
- HOUSE LATERALS TO BE CONSTRUCTED WITH INVERTS AT PROPERTY LINE SIX FEET BELOW CURB GRADE EXCEPT AS NOTED.
- RESURFACE ALL TRENCHES WITHIN PAVED AREAS TO MEET L.A. COUNTY ROAD DEPT. OR CALIFORNIA STATE HIGHWAY REQUIREMENTS IN ACCORDANCE WITH PERMITS.
- SEWERS TO BE TESTED FOR LEAKAGE PER SECT. 808-2.3.7 OF THE STANDARD SPECIFICATIONS AND SPECIAL PROVISIONS (S-10.4.1) OF THE STD. SPEC. REGARDING SAFETY ORDERS.
- ALL JOINTS BETWEEN CAST IRON PIPE AND VITRIFIED CLAY PIPE SHALL BE MADE WITH A RUBBER SLEEVE JOINT TYPE "C" OR "D" (WITH BUSHING IF NECESSARY) PER STANDARD SPECIFICATIONS, SECTION 808-2.
- FULL COMPLIANCE WITH SECTION 808-1.3 OF THE SPECIAL PROVISIONS WILL BE REQUIRED FOR BACKFILL IN STREETS. CERTIFICATION OF BACKFILL COMPACTION AND SAND EQUIVALENTS BY A QUALIFIED, REGISTERED TESTING LABORATORY SHALL BE PROVIDED BY THE PERMITTEE PRIOR TO THE ISSUANCE OF A CERTIFICATE OF PARTIAL ACCEPTANCE.
- WORDS IN CIRCLES AT END OF HOUSE LATERALS INDICATE "V" SHALL BE LAID HORIZONTAL AND HOUSE LATERALS SHALL BE CONSTRUCTED WITH 1/4" RISE PER FOOT TO PROPERTY LINE.
- FIGURES IN CIRCLES AT END OF HOUSE LATERALS INDICATE HOUSE LATERALS SHALL BE CONSTRUCTED WITH 1/4" RISE PER FOOT TO PROPERTY LINE.

NOTICE TO CONTRACTOR

The existence and location of any underground utility pipes or structures shown on these plans are obtained by a search of the available records to the best of my knowledge there are no existing utilities shown on these drawings. The contractor is required to take due precautionary measures to protect the utility lines shown and any other lines not of record or not shown on these drawings.

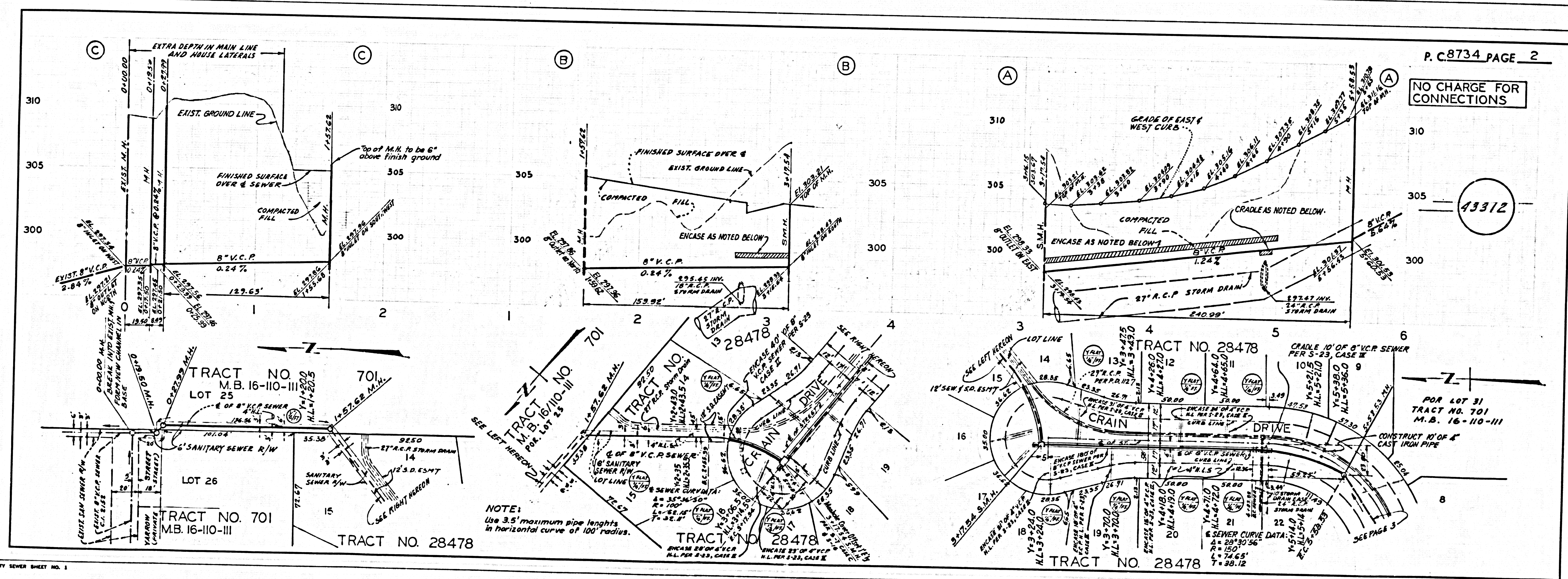
COLLECT CHARGES
 AS INDICATED

NOTE:
 GRADES TO WHICH THIS IMPROVEMENT IS TO BE CONSTRUCTED ARE SHOWN ON PLANS AND PROFILE GRADE POINTS FOR TOP OF CURBS, CENTER LINE OF STREETS OR CENTER LINE OF ALLEYS ARE SHOWN BY CIRCLES ON PROFILES. AT ALL POINTS BETWEEN DESIGNATED ELEVATIONS ARE IN FEET ABOVE U.S.C. & G.S. MEAN SEA LEVEL DATUM OF 1929.
 THIS DRAWING AND THE DATA HEREON ARE HEREBY MADE A PART OF THE SPECIFICATIONS WORK SHALL BE CONSTRUCTED ACCORDING TO THE STANDARD SPECIFICATIONS FOR PUBLIC UTILITIES CONSTRUCTION (S-10) EDITION WITH 1972 SUPPLEMENTS AND COUNTY ENGINEER'S SPECIAL PROVISIONS FOR THE CONSTRUCTION OF SANITARY SEWERS DATED APRIL 16, 1972. BEFORE WORK UNDER THIS CONTRACT BEGINS THE CONTRACTOR MUST OBTAIN A PERMIT TO EXCAVATE IN COUNTY STREETS FROM THE L.A. COUNTY IMPERIAL DIVISION OF PLANNING AND DESIGN, ROOM 178, BOWEN AVENUE OFFICE, 2800 S. ROAD OFF, DISTRICT OFFICE NO. 5 AND PAY A FEE TO THE COUNTY ENGINEER, ROOM 178, BOWEN AVENUE OFFICE, 2800 S. ROAD OFF, DISTRICT OFFICE NO. 5 AND PAY A FEE TO THE COUNTY ENGINEER, ROOM 178, BOWEN AVENUE OFFICE, 2800 S. ROAD OFF, DISTRICT OFFICE NO. 5. REGIONAL OFFICE, SUPPORT TO COVER THE COST OF CONSTRUCTION INSPECTION AND RECORD PLANS.
 LOCATION OF OR THE EXISTENCE OR NON-EXISTENCE OF ANY UNDERGROUND UTILITY PIPE, OR STRUCTURE WITHIN THE LIMITS OF THIS PROJECT THIS NOTE APPLIES TO ALL PAGES.
 IF WORK IS TO BE DONE IN A STATE HIGHWAY, A PERMIT MUST BE OBTAINED FROM THE STATE OF CALIFORNIA, DIVISION OF HIGHWAYS, 120 SOUTH SPRING STREET, LOS ANGELES, CALIFORNIA.

COUNTY OF LOS ANGELES, CALIFORNIA
 HARVEY T. BRANDT, COUNTY ENGINEER J. D. PARKHURST, CHIEF ENGINEER
 APPROVED BY Gordon W. Knight 5-19-72 APPROVED BY J. D. Parkhurst 5-19-72
 REGIONAL ENGINEER CHIEF ENGINEER

CHECKED BY: M. Duda 5-19-72
 REG. C. E. NO. 3402

J.N.0250.02



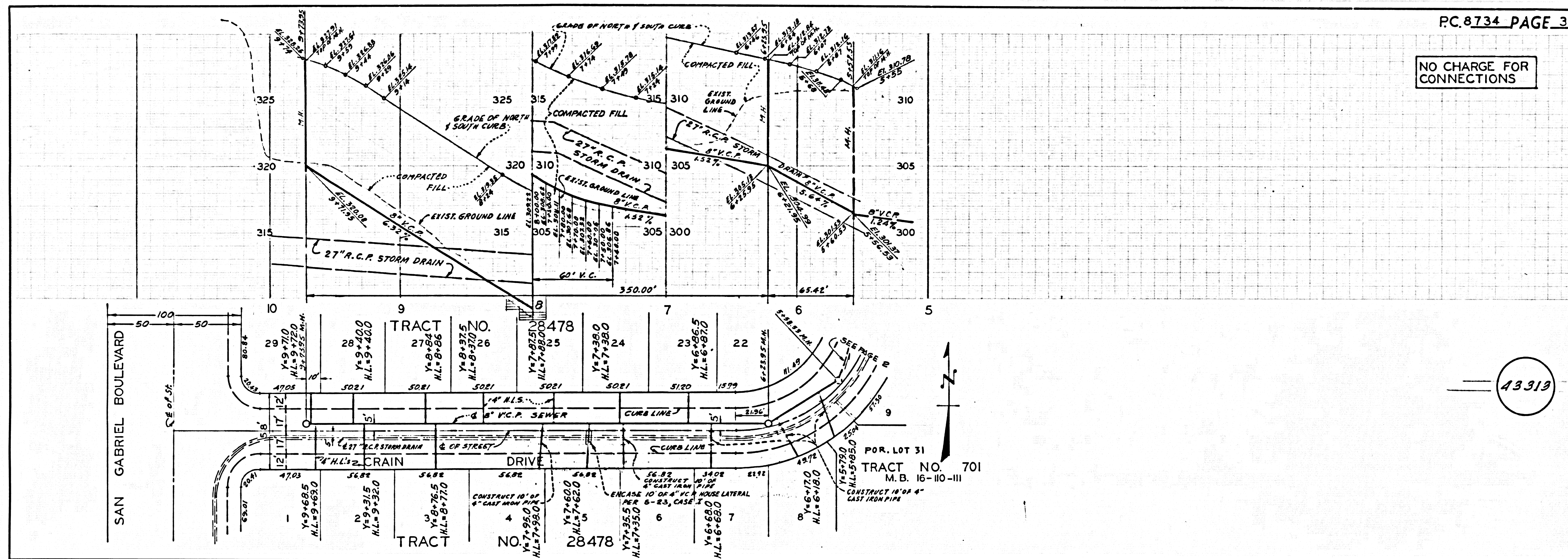
P.C. 8734 PAGE 2

NO CHARGE FOR CONNECTIONS

43312

NOTE:
 Use 3.5' maximum pipe lengths
 in horizontal curve of 100' radius.

NO CHARGE FOR CONNECTIONS



43319