

SANITARY SEWERS
TO BE CONSTRUCTED IN
PARCEL MAP NO. 2641
PRIVATE CONTRACT NO. 8736

W.S. 38 C/3
SHEET 2 PAGES
SCALE: HORIZ. 1"=40' DATE APRIL, 1972
PREPARED IN THE OFFICES OF
TRILAW & ASSOCIATES, CIVIL ENGINEERS
888 SOUTH LEMMON ST., ANAHEIM, CA 92805
By: *Joseph C. ...*
REG. C. E. No. 10177

43372

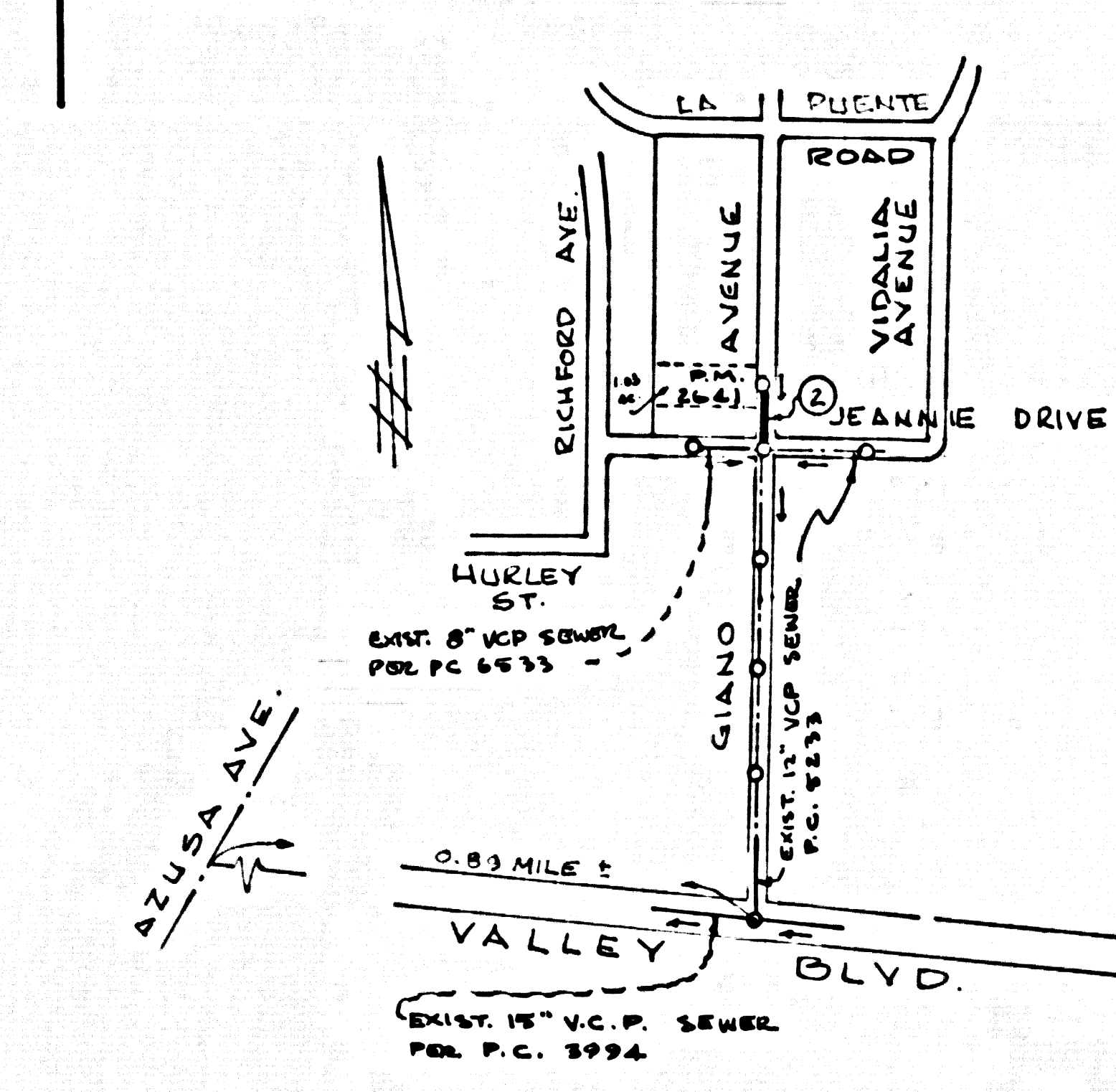
NOTE:

GRADES TO WHICH THIS IMPROVEMENT IS TO BE CONSTRUCTED ARE SHOWN ON PLANS AND PROFILE. ELEVATIONS ARE IN FEET ABOVE U.S.C. & G.S. SEA LEVEL, BATHY OF 1929.
BEFORE WORK CAN BE STARTED, THE CONTRACTOR MUST OBTAIN A PERMIT TO EXCAVATE IN CO. STREETS FROM THE L.A. CO. ROAD DEPT. DISTRICT OFFICE AND PAY A FEE TO THE CO. ENGINEER, 9150 GALT AVENUE, VAN NUYS, CALIF. 91411. THE CONTRACTOR SHALL BE RESPONSIBLE FOR OBTAINING ALL NECESSARY PERMITS AND APPROVALS FROM THE L.A. CO. ENGINEER. THE CONTRACTOR SHALL BE RESPONSIBLE FOR OBTAINING ALL NECESSARY PERMITS AND APPROVALS FROM THE L.A. CO. ENGINEER. THE CONTRACTOR SHALL BE RESPONSIBLE FOR OBTAINING ALL NECESSARY PERMITS AND APPROVALS FROM THE L.A. CO. ENGINEER.

COUNTY OF LOS ANGELES, CALIFORNIA
HARVEY T. BRANDT, COUNTY ENGINEER
APPROVED BY *Joseph C. ...* J. D. PARKHURST, CHIEF ENGINEER
REG. C. E. NO. 19156
LA PUENTE BLDG. DIST NO 20 J N 0250.05

- GENERAL NOTES:**
- WORK SHALL BE CONSTRUCTED ACCORDING TO THE STANDARD SPECIFICATIONS FOR PUBLIC WORKS CONSTRUCTION (1970 EDITION) WITH 1971, 1972 SUPPLEMENTS AND CO. ENGINEER SPECIAL PROVISIONS FOR THE CONSTRUCTION OF SANITARY SEWERS DATED 4-12-72 AND SHALL BE PRESENTED ONLY IN THE PRESENCE OF THE COUNTY ENGINEER.
 - PROVIDE STAKES ON THE PROPERTY LINE OF PROPERTY LINES PROPOSED AT RIGHT ANGLES TO THE CENTERLINE AT THE CENTERLINE OF EACH MANHOLE.
 - NO REPRESENTATIVE OF THE CO. ENGINEER WILL SURVEY OR LAY OUT ANY PORTION OF THE WORK.
 - THE PRIVATE ENGINEER SHALL FURNISH THE CO. ENGINEER WITH GRAD SHEDS AND STATIONING FOR ALL HOUSE LATERALS AND 14 HOUR LATERALS SHALL BE CONSTRUCTED IN A STRAIGHT ALIGNMENT AT RIGHT ANGLES FROM THE MAIN LINE SEWER EXCEPT AS SHOWN ON THE PLANS. HOUSE LATERALS FROM CHIMNEYS SHALL NOT HAVE AN ANGLE OF LESS THAN 45° WITH THE MAIN LINE SEWER. ANY CHANGE IN ALIGNMENT SHALL BE REQUESTED IN WRITING BY THE PRIVATE ENGINEER.
 - THE PRIVATE ENGINEER SHALL FURNISH THE HOUSE LATERAL DEPTH AT THE PROPERTY LINE BELOW THE TOP OF CURB ELEVATION FOR EACH HOUSE LATERAL ON THE GRADE SHEET.
 - NO REVISIONS SHALL BE MADE IN THESE PLANS WITHOUT THE APPROVAL OF THE CO. ENGINEER.
 - THE CONTRACTOR SHALL NOTIFY THE CO. ENGINEER'S OFFICE, 4545 W. 104th ST., LOS ANGELES, CA 90047, AT LEAST TWENTY-FOUR HOURS BEFORE STARTING ANY WORK UNDER THIS CONTRACT.
 - ALL STRUCTURES SHALL BE SET TO THE CORNER MANHOLES PER 5-3 OR PRECAST CONCRETE MANHOLES PER 5-3/4 EXCEPT AS NOTED.
 - MANHOLE TOPS IN UNIMPROVED PORTS OF WAY TO BE SIX INCHES ABOVE FINISHED GRADE.
 - REFER TO SECTION 7-10.4.1 OF THE STANDARD SPECIFICATIONS, REGARDING SAFETY ORDERS.
 - PIPE OR THE EQUIVALENT MAY BE USED FOR CONNECTIONS TO MAIN LINE SEWERS, EXCEPT AS NOTED.
 - IF A POWER POLE IS WITHIN THREE FEET OF THE SEWER, THE SEWER SHALL BE ENCASED, TWO FEET ON EACH SIDE FROM THE POINT OF INTERFERENCE, PER 5-2.3, CASE 2.
 - IF, DURING THE COURSE OF CONSTRUCTION, IT IS DETERMINED THAT THERE IS LESS THAN FOUR FEET OF COVER OVER THE TOP OF A MAIN LINE OR HOUSE LATERAL V.C.P. SEWER, WHICH IS NOT INDICATED ON THE PLANS, THE PIPE SHALL BE ENCASED UNLESS OTHERWISE APPROVED BY THE CO. ENGINEER. ENCASEMENT SHALL BE PER 5-2.3, CASE 2.
 - HOUSE LATERALS TO BE CONSTRUCTED WITH INVERTS AT PROPERTY LINE SIX (6) FEET BELOW CURB GRADE, EXCEPT AS NOTED.
 - IMPROVE ALL TRENCHES WITHIN PAVED AREAS TO MEET L.A. CO. ROAD DEPT. OR CALIFORNIA STATE HIGHWAY REQUIREMENTS IN ACCORDANCE WITH PERMITS.
 - VITRIFIED CLAY PIPE JOINTS SHALL BE TYPE "D", "F" OR "G" PER STD. SPECS. SEC. 20 B-2.
 - ALL JOINTS BETWEEN CAST IRON PIPE AND VITRIFIED CLAY PIPE SHALL BE MADE WITH A RUBBER RESERVE JOINT, TYPE "C" OR "D" (WITH PUSHING IF NECESSARY) PER STANDARD SPECIFICATIONS, SECTION 20 B-2.
 - SEWERS TO BE TESTED FOR LEAKAGE PER SECTION 20.6-2.1.7 OF THE STD. SPECS. AND SPECIAL PROVISIONS.
 - REQUIRE ALL TRENCHES WITHIN PAVED AREAS TO MEET L.A. COUNTY ROAD DEPT. OR CALIF. STATE HIGHWAY REQUIREMENTS IN ACCORDANCE WITH PERMITS.
 - GRADE POINTS FOR TOP OF CURBS, CENTERLINE OF STREETS, OR CENTERLINE OF ALLEYS ARE SHOWN BY CIRCLES ON PROFILES AT ALL POINTS BETWEEN DESIGNATED POINTS. THIS GRADE SHALL BE ESTABLISHED SO AS TO CONFORM TO A STRAIGHT LINE OR CURVE BETWEEN SAID DESIGNATED POINTS.

B.M. 11-104A ELEV. 403.504
VALLEY BLVD. ABOUT 697 FT. EAST OF THE APPROXIMATE CENTERLINE PRODUCED OF GIANO AVENUE, SOUTH OF THE CENTERLINE OF VALLEY BLVD. IN THE SOUTHERN PACIFIC RAILROAD RIGHT OF WAY, 5.6 FT. SOUTH OF THE SOUTHERN PACIFIC RAIL, 38.8 FEET NORTHWESTERLY OF A NAIL AND TIN IN A POWER POLE AND ABOUT 24 FT. WEST OF A LINE OF POWER POLES TO THE NORTH, SET ABOUT 3 INCHES BELOW THE SURFACE.
PUENTE L-12 QUAD 1971 ADJ.



INDEX MAP
Scale: 1"=600'
P.C. 8736

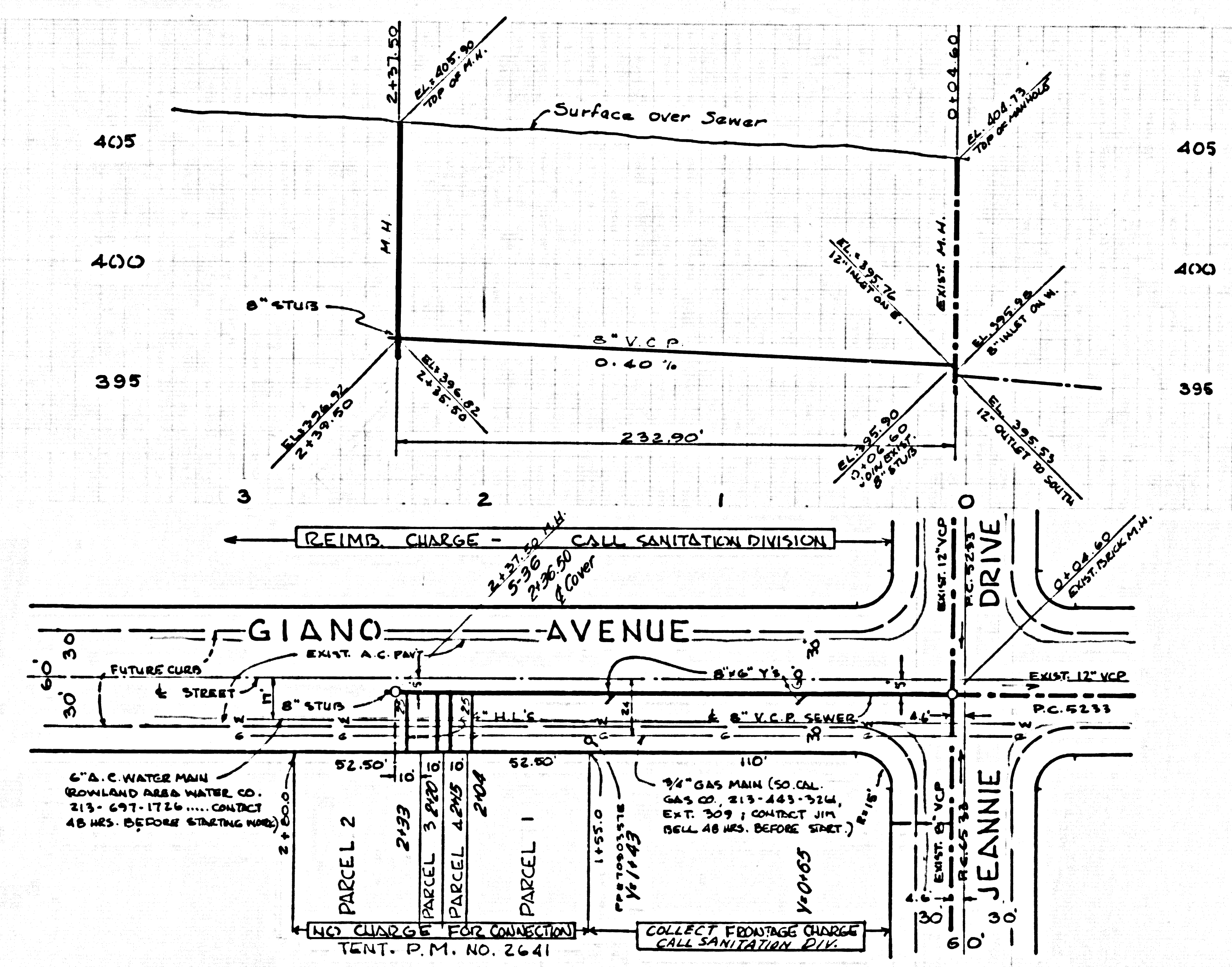
County Sanitation District shall be notified prior to the following so that required inspection can be made (Phone 337-1025 or 638-1181)
Acceptance of the project:
No connections for the disposal of industrial wastes shall be made to sewers shown on these drawings without written permission from the Chief Engineer and General Manager of the County Sanitation Districts.

THE FOLLOWING LATEST REVISED STANDARD PLANS ON FILE IN THE OFFICE OF THE COUNTY ENGINEER SHALL APPLY IN THE CONSTRUCTION OF THIS PROJECT:

LEGEND	5-1
MINIMUM PUBLIC SAFETY REQUIREMENTS	5-2
DRICK MANHOLE	5-3
STANDARD MANHOLE STEP	5-17
DEEDING FOR SEWER PIPE	5-21
CRADLING AND ENCASEMENT	5-23
WIRE OR TIE SUPPORT	5-26
ALLOWABLE TRENCH WIDTHS	5-28
LOCKING MANHOLE FRAME & COVER	5-35
NON-REINFORCED PRECAST CONCRETE MANHOLE	5-36

COLLECT CHARGES AS INDICATED

43373



DET-288-NO. 128 IMPROV. 63