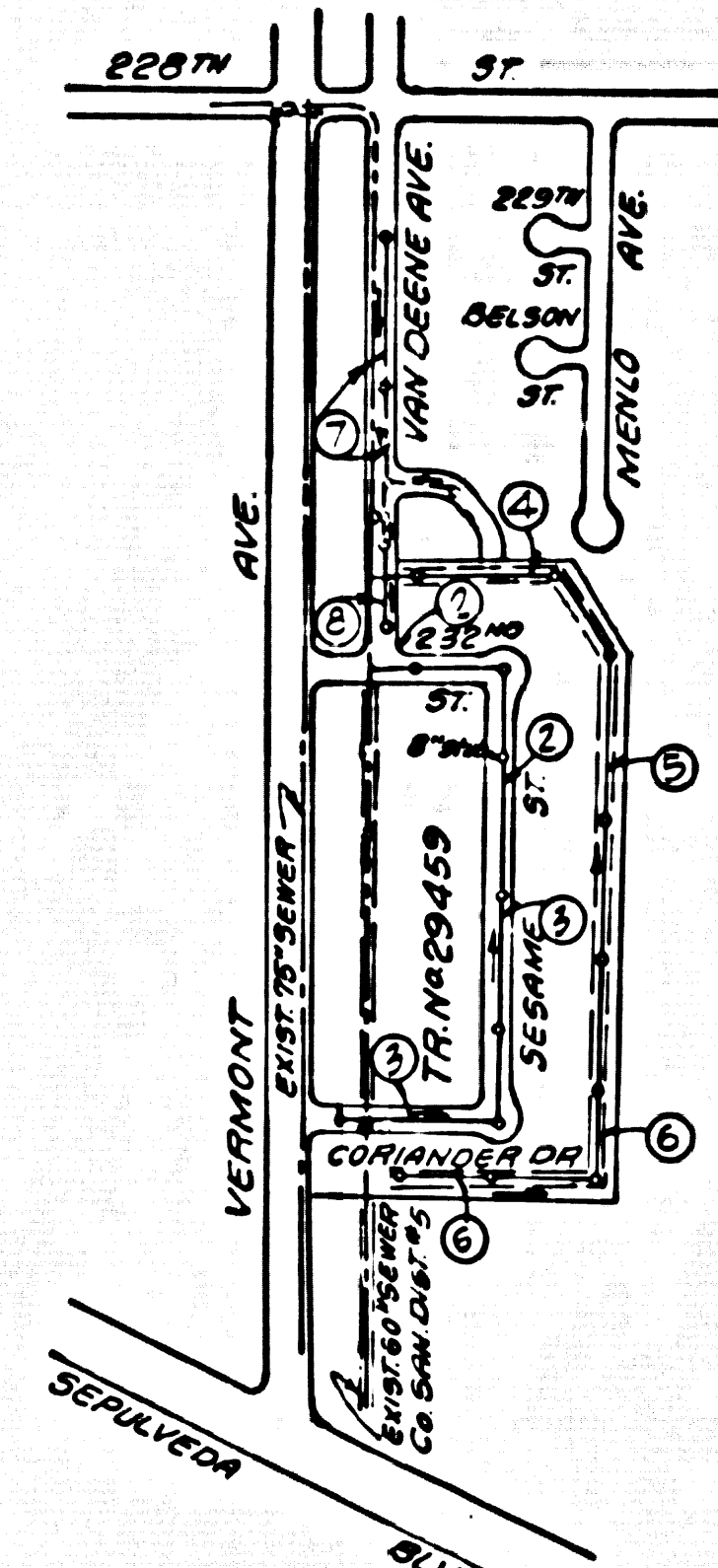


B.M. 8447 ELEV. 26749
 WIRE SPIKE 1" W CURB FACE INC. B. @ N.W.
 COR. SEPULVEDA BLVD. & VERMONT AVE.,
 16" IN 42" W. INTER. PRINTED C.S.D. 26.69
 GARDENA QUAD. 1972.



INDEX MAP
 TRACT No. 29459
 PC. 8737
 SCALE: 1"=600'

THE FOLLOWING LATEST REVISED STANDARD PLANS ON FILE IN THE OFFICE OF THE COUNTY ENGINEER SHALL APPLY IN THE CONSTRUCTION OF THIS PROJECT.

LEGEND	
MIN. PUBLIC SAFETY REQUIREMENTS	S-1
BRICK MANHOLE	S-2
TRAP MANHOLE BASE	S-3
REINFORCED PRECAST CONCRETE MANHOLE	S-10
MANHOLE STEP	S-36
SECTIONS FOR SEWER PIPE	S-17
CRADLING & ENCASEMENT	S-21
WYE OR TEE SUPPORT	S-23
ALLOWABLE TRENCH WIDTH	S-26
TRAP MANHOLE CASTING	S-33
	S-18

FULL COMPLIANCE WITH SECTION 306-13.3 OF THE SPECIAL PROVISIONS WILL BE REQUIRED FOR BACKFILL IN STREETS. CERTIFICATION OF BACKFILL COMPACTION AND BAND EQUIVALENTS BY A QUALIFIED, REGISTERED TESTING LABORATORY SHALL BE PROVIDED BY THE CONTRACTOR PRIOR TO THE ISSUANCE OF A CERTIFICATE OF PARTIAL ACCEPTANCE.

County Sanitation District #8818
 notified prior to the following so that required inspection can be made
 (Phone 337-1025 • 638-1181)

Core Drilling District trunk sewer.

Accessories of this project:

No connections for this project of industrial wastes shall be made to sewers shown on these drawings without written permission from the Chief Engineer and General Manager of the County Sanitation Districts.

LOMITA BLDG. DIST. NO. 12

PROFILE ALIGNMENT AND GRADE OF
 SANITARY SEWERS P.C. 8737
 TO BE CONSTRUCTED IN
 TRACT No. 29459 PAGE 1

PRIVATE CONTRACT NO. 8737

W.S. 28
 4 SHEETS, 8 PAGES
 SCALE: HORIZ. 1"=40' VERT. FEBRUARY, 1972
 PREPARED IN THE OFFICES OF
 E.L. PEARSON & ASSOCIATES
 1551 W. REDONDO BEACH BLVD.
 By Robert D. Hurdle 5/14/72
 REG. C. E. NO. 17062

43407

- NOTE:
- PROVIDE STAKES ON THE PROPERTY LINE OR PROPERTY LINES PRODUCED AT RIGHT ANGLES TO THE SEWER LINE AT THE CENTER LINE OF EACH MANHOLE.
 - NO REPRESENTATIVE OF THE COUNTY ENGINEER WILL SURVEY OR LAY OUT ANY PORTION OF THE WORK.
 - THE PRIVATE ENGINEER SHALL FURNISH THE COUNTY ENGINEER WITH GRAD SHEETS AND STATIONING FOR ALL HOUSE LATERALS AND YARD BRANCHES AND SHALL PROVIDE STAKES FOR THEM AT THEIR PROPER LOCATIONS WITH STATIONING PLAINLY MARKED. ALL HOUSE LATERALS SHALL BE CONSTRUCTED AT A STRAIGHT ALIGNMENT AT RIGHT ANGLES FROM THE MAIN LINE SEWER EXCEPT AS SHOWN ON THE PLANS. HOUSE LATERALS FROM CURBSIDE SHALL NOT HAVE AN ANGLE OF LESS THAN 45° WITH THE MAIN LINE SEWER. ANY CHANGE IN ALIGNMENT SHALL BE REQUESTED IN WRITING BY THE PRIVATE ENGINEER.
 - THE PRIVATE ENGINEER SHALL FURNISH THE HOUSE LATERAL DEPTH AT THE PROPERTY LINE BELOW THE TOP OF CURB ELEVATION FOR EACH HOUSE LATERAL ON THE GRAD SHEET.
 - NO REVISIONS SHALL BE MADE IN THESE PLANS WITHOUT THE APPROVAL OF THE COUNTY ENGINEER.
 - THE CONTRACTOR SHALL NOTIFY THE CONSTRUCTION DIVISION BY TELEPHONE, HANSON 9-62, EXT. 8181, AT LEAST TWENTY-FOUR HOURS BEFORE STARTING ANY WORK UNDER THIS CONTRACT.
 - ALL STRUCTURES SHALL BE EITHER BRICK MANHOLES PER S-3 OR PRECAST CONCRETE MANHOLES PER S-36, EXCEPT AS NOTED.
 - 1/2" BRASS RODS SHALL BE USED FOR CONNECTIONS TO MAIN LINE SEWERS EXCEPT AS NOTED.
 - MANHOLE TOPS IN UNIMPROVED RIGHTS-OF-WAY TO BE SIX INCHES ABOVE FINISHED GRADE.
 - USE EXTRA STRENGTH PIPE. ALL PIPE IS STANDARD DEPTH EXCEPT AS NOTED.
 - VITRIFIED CLAY PIPE JOINTS SHALL BE TYPE "O", 1" DIA. 1/2" PER STD. SPEC. 208-2
 - IF A POWER POLE IS WITHIN THREE FEET OF THE SEWER, THE SEWER SHALL BE ENCASED, PER S-22, TWO FEET ON EACH SIDE FROM THE POINT OF INTERFERENCE.
 - IF DURING THE COURSE OF CONSTRUCTION IT IS DETERMINED THAT THERE IS LESS THAN FOUR FEET OF COVER OVER THE TOP OF A MAIN LINE OF HOUSE LATERAL V.C.A. SEWER WHICH IS NOT INDICATED ON THE PLANS, THE PIPE SHALL BE ENCASED PER S-22, UNLESS OTHERWISE APPROVED BY THE COUNTY ENGINEER.
 - HOUSE LATERALS TO BE CONSTRUCTED WITH INVERTS AT PROPERTY LINE 6 FEET BELOW CURB GRADE EXCEPT AS NOTED.
 - RESURFACE ALL TRENCHES WITHIN PAVED AREAS TO MEET L.A. COUNTY ROAD DEPT. OR CALIFORNIA STATE HIGHWAY REQUIREMENTS IN ACCORDANCE WITH PERMITS.
 - SEWER TO BE TESTED FOR LEAKAGE PER SECTION 306-5.3.7 STD. SPEC.
 - REFER TO SECTION 7-10-4-10 OF THE STANDARD SPECS. REGARDING SAFETY ORDERS.
 - ALL JOINT BETWEEN CAST IRON PIPE AND VITRIFIED CLAY PIPE SHALL BE MADE WITH A RUBBER SLEEVE JOINT, TYPE "D" WITH BUSHING IF PER SPEC. 208-2.

NOTICE TO CONTRACTOR
 The existence and location of any underground utility pipes or structures shown on these plans are obtained by a search of the available records to the best of my knowledge there are no existing utilities except as shown on these plans. The contractor is required to take due precautionary measures to protect the utility lines shown and other lines not of record or not shown on these plans.
 Robert D. Hurdle
 C.E. 17062

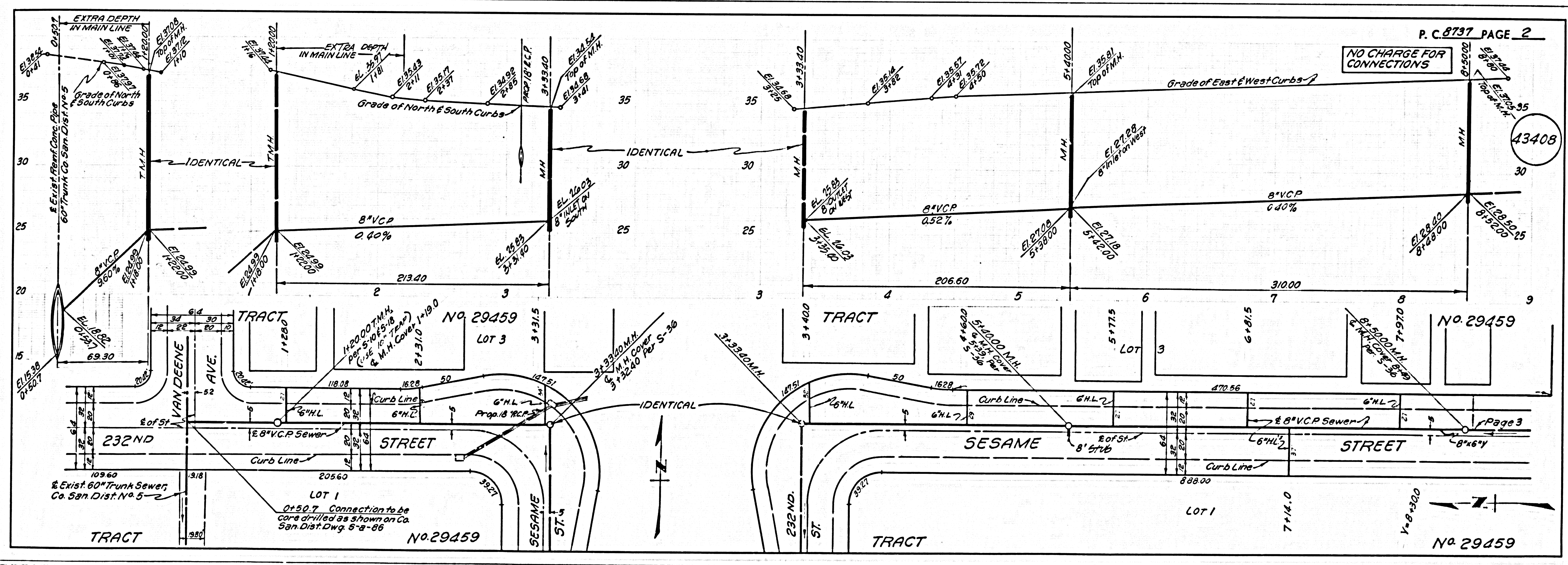
COLLECT CHARGES AS INDICATED

NOTE:
 GRADES TO WHICH THIS IMPROVEMENT IS TO BE CONSTRUCTED ARE SHOWN ON PLANS AND PROFILE. GRADE POINTS FOR TOP OF CURB, CENTER LINE OF STREET, OR CENTER LINE OF ALLEY ARE SHOWN BY CIRCLES ON PROFILES. AT ALL POINTS BETWEEN DESIGNATED POINTS THE GRADE SHALL BE ESTABLISHED SO AS TO CONFORM TO A STRAIGHT LINE DRAWN BETWEEN SAID DESIGNATED POINTS.
 SEWER SHALL BE CONSTRUCTED TO THE STANDARD SPECIFICATIONS FOR PUBLIC WORKS CONSTRUCTION (SECTION 306-13.3 SUPPLEMENT) AND COUNTY ENGINEER'S SPECIAL PROVISIONS FOR THE CONSTRUCTION OF SANITARY SEWERS DATED APRIL 1, 1970 AND SHALL BE PROSECUTED ONLY IN THE PRESENCE OF THE CO. ENGINEER.
 BEFORE WORK CAN BE STARTED THE CONTRACTOR MUST OBTAIN A PERMIT TO EXCAVATE IN COUNTY STREETS FROM THE L.A. COUNTY ROAD DEPT. DISTRICT OFFICE NO. 1551 W. REDONDO BEACH BLVD., LOS ANGELES, CALIFORNIA 90024.
 3152 E. IMPERIAL HWY. CORNER ON 825 W. LOMITA BLVD., LOMITA, REGIONAL OFFICE, SUFFICIENT TO COVER THE COST OF CONSTRUCTION INSPECTION AND RECORD PLANS.
 APPROVAL OF THIS PLAN BY THE COUNTY OF LOS ANGELES DOES NOT CONSTITUTE A REPRESENTATION AS TO THE ACCURACY OF THE LOCATION OF OR THE EXISTENCE OR NON-EXISTENCE OF ANY UNDERGROUND UTILITY PIPE, OR STRUCTURE WITHIN THE LIMITS OF THIS PROJECT. THIS NOTE APPLIES TO ALL PAGES.
 IF WORK IS TO BE DONE IN A STATE HIGHWAY, A PERMIT MUST BE OBTAINED FROM THE STATE OF CALIFORNIA, DIVISION OF HIGHWAY, 120 SOUTH SPRING STREET, LOS ANGELES, CALIFORNIA.

COUNTY OF LOS ANGELES, CALIFORNIA
 HARVEY BRAND, COUNTY ENGINEER J. D. PARKURST, CHIEF ENGINEER
 APPROVED BY Robert D. Hurdle 5-22-72 APPROVED BY J. D. Parkurst
 REGIONAL ENGINEER OFFICE ENGINEER

CHECKED BY Samuel W. Walsh 5/14/72
 REG. C. E. NO. 10463

J.N. 0250.02



8885 ON TRACT

