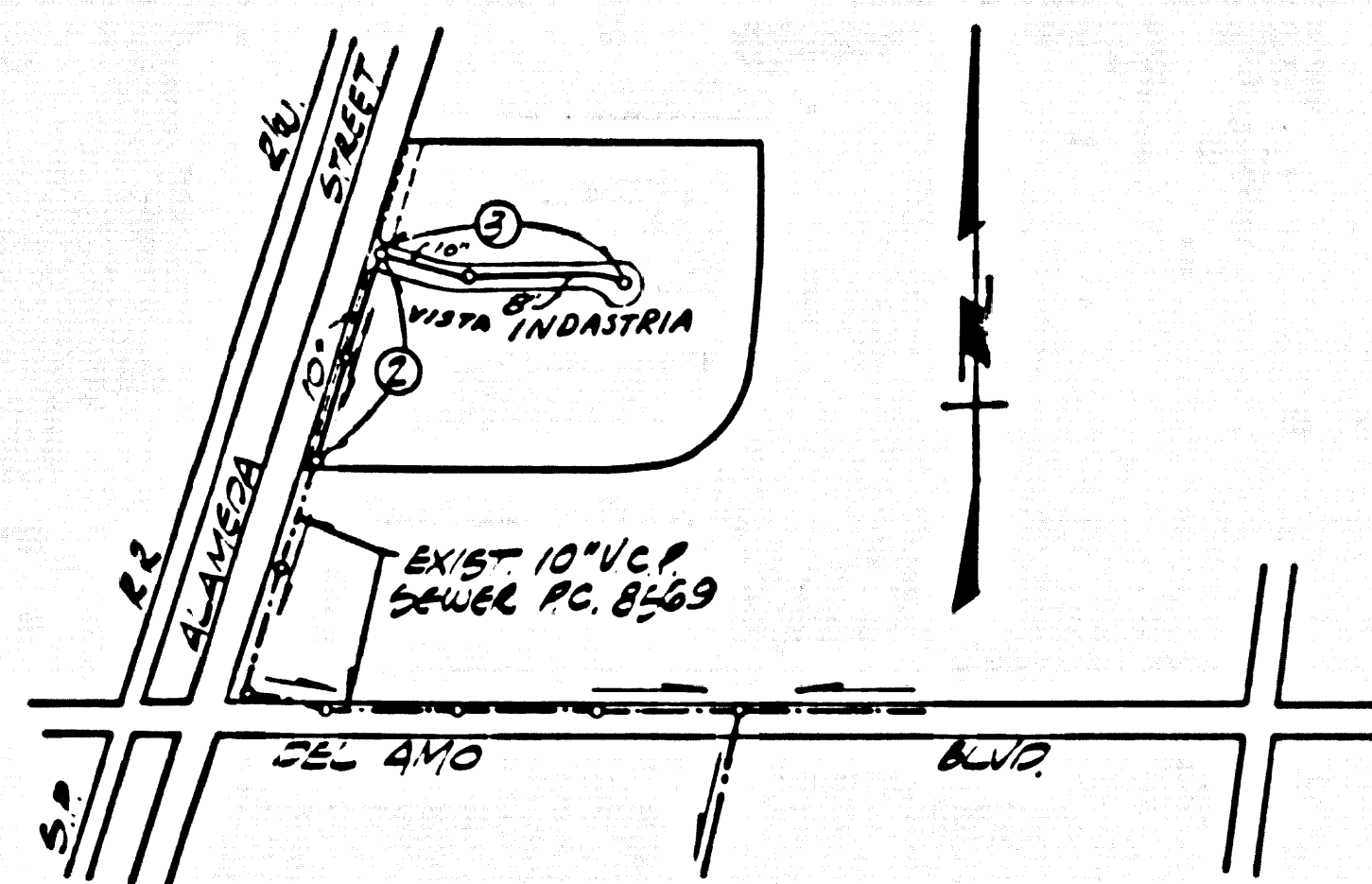


B.M. 2291 ELEV. 97.828
 C.S. MON. IN WELL 20' N. 46' DEL AMO BLVD
 + 50' FT. W. E.C. ALAMEDA W. BARREL
 M.D. COMPTON JY 1942
 BASELINE QUAD. 1905



INDEX MAP
 PARCEL MAP
 No. 1678
 SCALE 1"=600'
 P.C. No. 8738

THE FOLLOWING STANDARD PLANS ON FILE IN THE OFFICE OF THE COUNTY ENGINEER SHALL APPLY IN THE CONSTRUCTION OF THIS PROJECT.

LEGEND	
MIN. EXCAVATION SAFETY REQUIREMENTS	5-1
BRICK MANHOLE	5-2
NON REINFORCED PRECAST CONCRETE MANHOLE	5-3a
MANHOLE FRAME & COVER	5-35
MANHOLE STEP	5-7
SEEDING & SEWER PIPE	5-21
CRACKING ENCASEMENT	5-23
WYE & TEE SUPPORT	5-26
ALLOWABLE TRENCH WIDTH	5-33
RECTANGULAR SHALLOW MANHOLES	5-7
RECTANGULAR MANHOLE FRAME & COVER	5-16
PRECAST CONCRETE SHALLOW MANHOLE	5-32

FULL COMPLIANCE WITH SECTION 844-1.9.9 OF THE OFFICIAL PROVISIONS WILL BE REQUIRED FOR BACKFILL IN STREETS. CERTIFICATION OF BACKFILL COMPACTION AND SAID EQUIVALENTS BY A QUALIFIED, REGISTERED TESTING LABORATORY SHALL BE PROVIDED BY THE PERMITTEE PRIOR TO THE ISSUANCE OF A CERTIFICATE OF PARTIAL ACCEPTANCE.

REVISION: REALIGNED STREET & SEWER,
 VISTA LA PAZ, PAGES 3, 57A 3475 TO 6410
 APPROVED: W.L.L. Murphy, P.E. - 18,374
 OFFICE OF COUNTY ENGINEER DATE 6/26/72

DOMINGUEZ BLDG. DIST. NO. 13

- NOTES:
- PROVIDE STAKES ON THE PROPERTY LINE OR PROPERTY LINES PRODUCED AT RIGHT ANGLES TO THE SEWER LINE AT THE CENTER LINE OF EACH MANHOLE.
 - NO REPRESENTATIVE OF THE COUNTY ENGINEER WILL SURVEY OR LAY OUT ANY PORTION OF THE WORK.
 - THE PRIVATE ENGINEER SHALL FURNISH THE COUNTY ENGINEER WITH GRADE SHEETS AND STATIONING FOR ALL HOUSE LATERALS AND "T" BRANCHES AND SHALL PROVIDE STAKES FOR THEM AT THESE PROPER LOCATIONS WITH STATIONING PLAINLY MARKED. ALL HOUSE LATERALS SHALL BE CONSTRUCTED IN A STRAIGHT ALIGNMENT AT RIGHT ANGLES FROM THE MAIN LINE SEWER EXCEPT AS SHOWN ON THE PLANS. HOUSE LATERALS FROM CHIMNEYS SHALL NOT HAVE AN ANGLE OF LESS THAN 45° WITH THE MAIN LINE SEWER. ANY CHANGE IN ALIGNMENT SHALL BE REQUESTED BY WRITING BY THE PRIVATE ENGINEER.
 - THE PRIVATE ENGINEER SHALL FURNISH THE HOUSE LATERAL DEPTH AT THE PROPERTY LINE BELOW THE TOP OF CURB ELEVATION FOR EACH HOUSE LATERAL ON THE GRADE SHEET.
 - NO REVISIONS SHALL BE MADE IN THESE PLANS WITHOUT THE APPROVAL OF THE COUNTY ENGINEER.
 - THE CONTRACTOR SHALL NOTIFY THE CONSTRUCTION DIVISION BY TELEPHONE, MADISON 9-400, EXT. 81581, AT LEAST TWENTY-FOUR HOURS BEFORE STARTING ANY WORK UNDER THIS CONTRACT.
 - ALL STRUCTURES SHALL BE BUILT TO THE STANDARD SPECIFICATIONS FOR PRECAST CONCRETE MANHOLES PER S-30 EXCEPT AS NOTED.
 - USE STANDARD MANHOLE FRAMES AND COVERS, S-35 EXCEPT AS NOTED.
 - MANHOLE TOPS IN UNIMPROVED RIGHTS-OF-WAY TO BE SIX INCHES ABOVE FINISHED GRADE.
 - USE EXTRA STRENGTH PIPE, ALL PIPE IN STANDARD DEPTH EXCEPT AS NOTED.
 - VITRIFIED CLAY PIPE JOINTS SHALL BE TYPE "D" OR "E" PER S-70 SPEC 108-2.
 - IF A POWER POLE IS WITHIN THREE FEET OF THE SEWER, THE SEWER SHALL BE ENCASED, PER S-23, TWO FEET ON EACH SIDE FROM THE POINT OF INTERFERENCE.
 - IF DURING THE COURSE OF CONSTRUCTION IT IS DETERMINED THAT THERE IS LESS THAN FOUR FEET OF COVER OVER THE TOP OF A MAIN LINE OR HOUSE LATERAL V.C.P. SEWER WHICH IS NOT INDICATED ON THE PLANS, THE PIPE SHALL BE ENCASED PER S-23, UNLESS OTHERWISE APPROVED BY THE COUNTY ENGINEER.
 - HOUSE LATERALS TO BE CONSTRUCTED WITH INVERTS AT PROPERTY LINE 6 FEET BELOW CURB GRADE EXCEPT AS NOTED.
 - RESURFACE ALL TRENCHES WITHIN PAVED AREAS TO MEET L.A. COUNTY ROAD DEPT. OR CALIFORNIA STATE HIGHWAY REQUIREMENTS IN ACCORDANCE WITH PERMITS.
 - DO NOT TO BE USED FOR LANDSCAPE PER SECTION 300-2.5.7 SPEC 570 SPEC
 - PERMITS TO SECTION 710-8.1 OF THE STANDARD SPECIFICATIONS SHALL BE OBTAINED PRIOR TO CONSTRUCTION.
 - ALL JOINTS BETWEEN SEWER PIPE AND VITRIFIED CLAY PIPE SHALL BE MADE WITH A RUBBER GASKET JOINT, TYPE "C" OR "D" (WITH BENDING INVERT JOINT) PER S-70 SPEC 108-2.

County Sanitation Districts shall be notified prior to the following work shall required inspection and be made (Phone 337-1025 - 639-1181)

Acceptance of the project.

No connections for the disposal of industrial wastes shall be made to sewers shown on these drawings without written permission from the Chief Engineer and General Manager of the County Sanitation Districts.

NOTICE TO CONTRACTOR
 The existence and location of any underground utility pipes or structures shown on these plans are obtained by a search of the available records to the best of my knowledge there are no existing utilities except as shown on these plans. The contractor is required to take due precautionary measures to protect the utility lines shown and any other lines not of record or not shown on these plans.

COLLECT CHARGES AS INDICATED

PROFILE ALIGNMENT AND GRADE OF
 SANITARY SEWERS PAGE 1

TO BE CONSTRUCTED IN
 PARCEL MAP No. 1678

PRIVATE CONTRACT NO. 8738

W.S. 92
 2 SHEETS, 3 PAGES
 SCALE: VERT. 1"=4'
 HORIZ. 1"=40'
 MARCH, 1972

PREPARED IN THE OFFICES OF
 E.L. PEARSON & ASSOCIATES
 1651 W. RECONDO BOULEVARD
 BY: [Signature]
 REG. C. E. NO. 9757

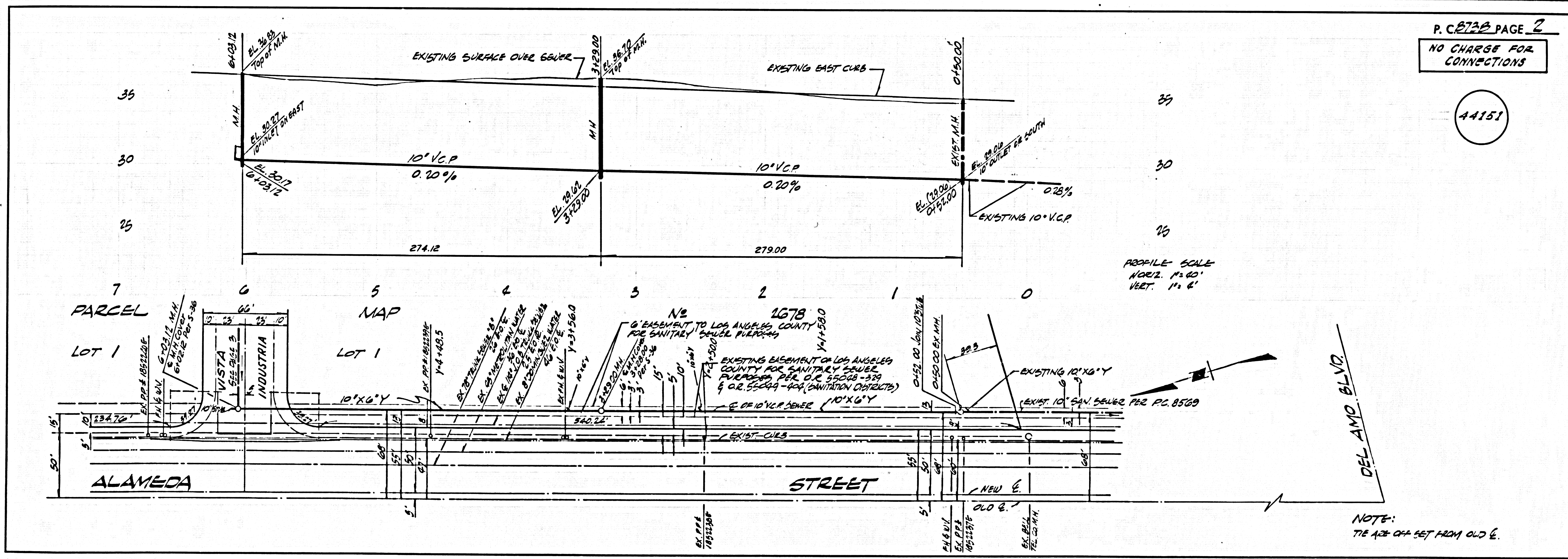
FOR LEGEND SEE PLAN NO. S-1

NOTES:
 GRADES TO WHICH THIS IMPROVEMENT IS TO BE CONSTRUCTED ARE SHOWN ON PLANS AND PROFILE GRADE POINTS FOR TOP OF CURBS, CENTER LINE OF STREETS, OR CENTER LINE OF ALLEYS ARE SHOWN BY CIRCLES ON PROFILE. AT ALL POINTS BETWEEN DESIGNATED POINTS THE GRADE SHALL BE ESTABLISHED SO AS TO CONFORM TO A STRAIGHT LINE DRAWN BETWEEN SAID DESIGNATED POINTS. ELEVATIONS ARE IN FEET ABOVE U.S.C. & G.S. MEAN SEA LEVEL DATUM OF 1929.
 BEFORE WORK CAN BE STARTED, THE CONTRACTOR MUST OBTAIN A PERMIT TO EXCAVATE IN COUNTY STREETS FROM THE L.A. COUNTY ROAD DEPT. DISTRICT OFFICE NO. 5 AND PAY A FEE TO THE COUNTY ENGINEER, ROOM 202, COUNTY ENGINEERING BUILDING, 100 WEST SECOND STREET OR PALMS VESTIBULE, CENTINELA, VANLEY, ... REGIONAL OFFICE, SUFFICIENT TO COVER THE COST OF CONSTRUCTION INSPECTION AND RECORD PLANS.
 APPROVAL OF THIS PLAN BY THE COUNTY OF LOS ANGELES DOES NOT CONSTITUTE A REPRESENTATION AS TO THE ACCURACY OF THE LOCATION OF OR THE EXISTENCE OR NON EXISTENCE OF ANY UNDERGROUND UTILITY PIPE, OR STRUCTURE WITHIN THE LIMITS OF THIS PROJECT. THIS NOTE APPLIES TO ALL PAGES.
 IF WORK IS TO BE DONE IN A STATE HIGHWAY, A PERMIT MUST BE OBTAINED FROM THE STATE OF CALIFORNIA, DIVISION OF HIGHWAYS, 120 SOUTH SPRING STREET, LOS ANGELES, CALIFORNIA.

COUNTY OF LOS ANGELES, CALIFORNIA
 HARVEY T. BENNETT COUNTY ENGINEER J. D. PARKHURST, CHIEF ENGINEER
 APPROVED BY: [Signature] 6-14-72 APPROVED BY: [Signature] CHIEF ENGINEER

CHECKED BY: [Signature] 6/14/72
 REG. CE. NO. 623

J.N. 0250.05



P.C. 8738 PAGE 2
 NO CHARGE FOR CONNECTIONS

44151

PROFILE SCALE
 HORIZ. 1"=40'
 VERT. 1"=4'

NOTE:
 THE 10\"/>

NO CHARGE FOR CONNECTIONS

