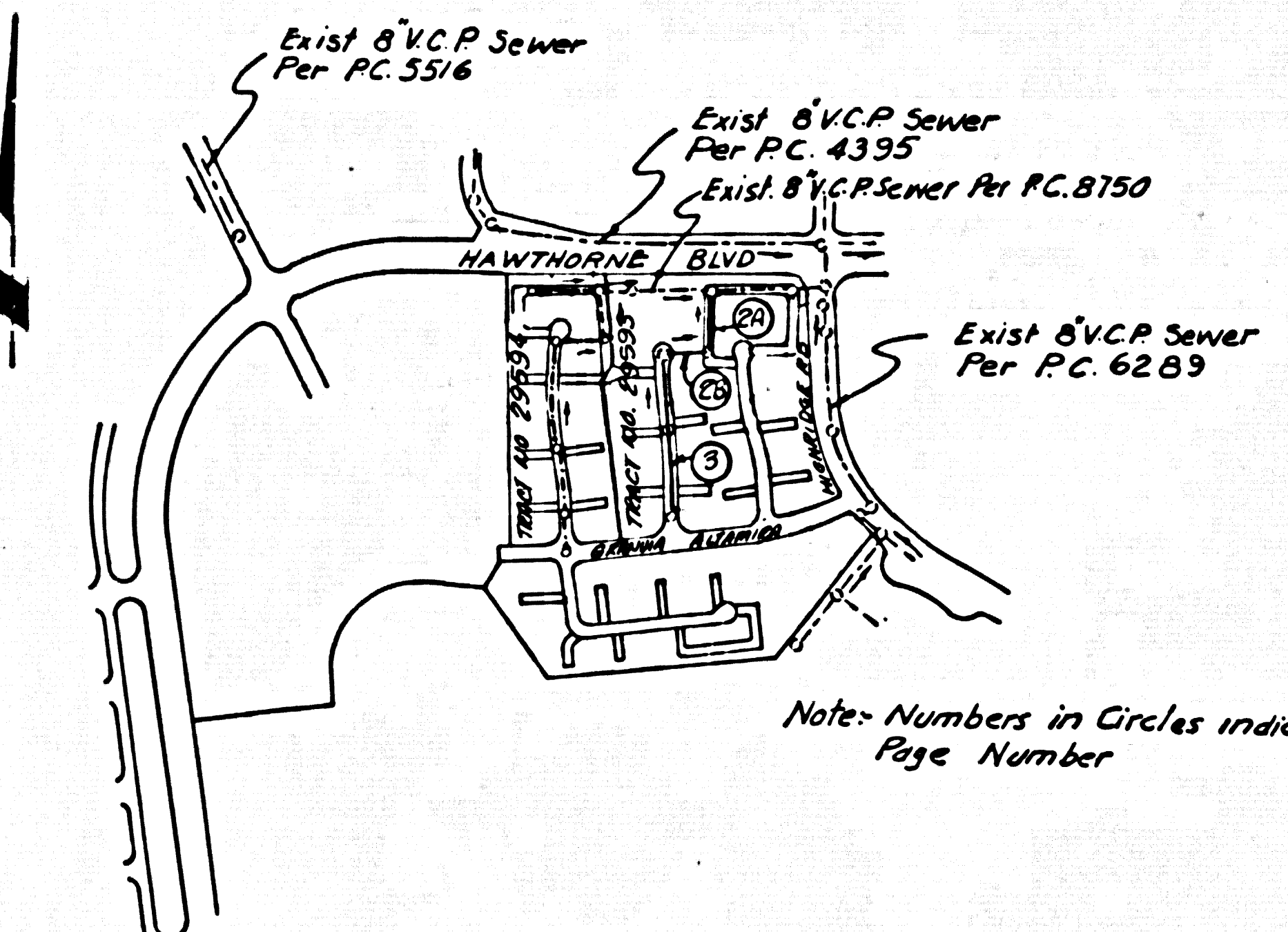


B.M. 874374 ELEV. 1093.131  
 1/2 SPK 40 FT. N. & Hawthorne Blvd  
 780 FT. W. & Graystone Road Front  
 of Blue Cove Sub Sta.  
 Palms Verdes QUAD. 19.70

Full Compliance With Section 306-1.9.3 of the special Provisions will be required for back fill in Streets. Certification of Back Fill Compaction and Sand Equivalents by a qualified Registered Testing Laboratory shall be provided by the Permittee Prior to the issuance of a Certificate of Partial Acceptance.



Note: Numbers in Circles Indicate Page Number

INDEX MAP  
 SCALE: 1" = 600'  
 P.C. NO. 8739  
 T.R. NO. 29593

REVISION	NO.	DATE
		4-24-73
PAGE 3. Added 4" Y for Guard House. STA. 9+71.5		
Approved: <i>E. C. [Signature]</i> Office of County Engineer, 15944		

GENERAL NOTES:

1. ELEVATIONS ARE IN FEET ABOVE U.S.C. & G.S. SEA LEVEL UNLESS OTHERWISE NOTED.
2. NO REVISIONS SHALL BE MADE IN THESE PLANS WITHOUT THE APPROVAL OF THE COUNTY ENGINEER.
3. NO REPRESENTATIVE OF THE COUNTY ENGINEER WILL SURVEY OR LAY OUT ANY PORTION OF THE WORK.
4. GRADES TO WHICH THIS IMPROVEMENT IS TO BE CONSTRUCTED ARE SHOWN ON PLANS AND PROFILES. GRADE POINTS FOR TOP OF CURB, CENTER LINE OF STREET, OR CENTER LINE OF ALLEYS ARE SHOWN BY CIRCLES ON PROFILES AT ALL POINTS BETWEEN BEARING POINTS. THE GRADE SHALL BE ESTABLISHED SO AS TO CONFORM TO A STRAIGHT LINE BETWEEN SAID DESIGNATED POINTS.
5. THE PRIVATE ENGINEER SHALL FURNISH THE COUNTY ENGINEER WITH GRADE SHEETS AND STATIONING FOR ALL HOUSE LATERALS AND "T" OR "Y" BRANCHES AND SHALL PROVIDE STAKES FOR THEM AT THEIR PROPER LOCATIONS WITH STATIONING PLAINLY MARKED. ALL HOUSE LATERALS SHALL BE CONSTRUCTED IN A STRAIGHT ALIGNMENT AT RIGHT ANGLES FROM THE MAIN LINE SEWER EXCEPT AS SHOWN ON THE PLANS. HOUSE LATERALS FROM CHIMNEYS SHALL NOT HAVE AN ANGLE OF LESS THAN 45° WITH THE MAIN LINE SEWER. ANY CHANGE IN ALIGNMENT SHALL BE REQUESTED BY THE PRIVATE ENGINEER.
6. THE PRIVATE ENGINEER SHALL FURNISH THE HOUSE LATERAL DEPTH AT THE PROPERTY LINE BELOW THE TOP OF CURB ELEVATION FOR EACH HOUSE LATERAL ON THE GRADE SHEET.
7. BEFORE WORK CAN BE STARTED, THE CONTRACTOR MUST OBTAIN A PERMIT TO EXCAVATE IN COUNTY STREETS FROM THE L.A. COUNTY ROAD DEPT., DISTRICT OFFICE NO. 3, AND PAY A FEE TO THE COUNTY ENGINEER, ROOM P-9, 3150 E. IMPERIAL HWY., DOWNNEY OR PALMS VERDES, CALIFORNIA REGIONAL OFFICE, TO COVER THE COST OF CONSTRUCTION INSPECTION AND PROTECT PLANS.
8. IF WORK IS TO BE DONE IN A STATE HIGHWAY, A PERMIT MUST BE OBTAINED FROM THE STATE OF CALIFORNIA, DIVISION OF HIGHWAYS, 130 SOUTH SPRING STREET, LOS ANGELES, CALIFORNIA.
9. APPROVAL OF THIS PLAN BY THE COUNTY OF LOS ANGELES DOES NOT CONSTITUTE A REPRESENTATION AS TO THE ACCURACY OF THE LOCATION OF OR THE EXISTENCE OR NON-EXISTENCE OF ANY UNDERGROUND UTILITY PIPES, OR STRUCTURE WITHIN THE LIMITS OF THIS PROJECT. THIS NOTE APPLIES TO ALL PAGES.
10. REFER TO SECTION 7-16.6.1 OF THE STANDARD SPECIFICATIONS REGARDING SAFETY SIGNS.

County Sanitation Districts shall be notified prior to the following so that required inspections can be made (Phone 437-3025, 438-4101)

No objections for the disposal of industrial wastes shall be made to sewer's shown on these drawings without written permission from the Chief Engineer and General Manager of the County Sanitation Districts.

CONSTRUCTION NOTES:

1. WORK SHALL BE CONSTRUCTED ACCORDING TO THE STANDARD SPECIFICATIONS FOR PUBLIC WORKS CONSTRUCTION (1970 EDITION) WITH 1972 SUPPLEMENTS AND COUNTY ENGINEER SPECIAL PROVISIONS FOR THE CONSTRUCTION OF SANITARY SEWERS DATED APRIL 10, 1972. AND SHALL BE PROTECTED ONLY IN THE PRESENCE OF THE COUNTY ENGINEER.
2. THE CONTRACTOR SHALL NOTIFY THE CONSTRUCTION DIVISION BY TELEPHONE, MADISON 9-470, EXT. 8150, AT LEAST TWENTY-FOUR HOURS BEFORE STARTING ANY WORK UNDER THIS CONTRACT.
3. HOUSE LATERALS TO BE CONSTRUCTED WITH INVERTS AT PROPERTY LINE 6 FEET BELOW CURB GRADE OR GRADE OF ROAD.
4. WYS OR THE BRANCHES MAY BE USED FOR CONNECTIONS TO MAINLINE SEWERS EXCEPT AS NOTED.
5. ALL STRUCTURES SHALL BE EITHER BRICK MANHOLES PER S-3 OR PRECAST CONCRETE MANHOLES PER S-36, EXCEPT AS NOTED.
6. PROVIDE STAKES ON THE PROPERTY LINE OR PROPERTY LINES PRODUCED AT RIGHT ANGLES TO THE SEWER LINE AT THE CENTER LINE OF EACH MANHOLE.
7. MANHOLE TOYS IN UNIMPROVED RIGHTS OF WAY TO BE SIX INCHES ABOVE FINISHED GRADE.
8. VITRIFIED CLAY PIPE JOINTS SHALL BE TYPE "B", "T", OR "U" PER STANDARD SPECIFICATIONS SECTION 206-2.
9. IF A POWER POLE IS WITHIN THREE FEET OF THE SEWER, THE SEWER SHALL BE ENCASED, PER S-25, CASE II, TWO FEET ON EACH SIDE FROM THE POINT OF INTERFERENCE.
10. IF DURING THE COURSE OF CONSTRUCTION IT IS DETERMINED THAT THERE IS LESS THAN FOUR FEET OF COVER OVER THE TOP OF A MAIN LINE OR HOUSE LATERAL V.C.P. SEWER WHICH IS NOT INDICATED ON THE PLANS, THE PIPE SHALL BE ENCASED PER S-25, CASE II UNLESS OTHERWISE APPROVED BY THE COUNTY ENGINEER.
11. ALL JOINTS BETWEEN CLAY PIPE AND VITRIFIED CLAY PIPE SHALL BE MADE WITH A RUBBER SLEEVE JOINT, TYPE "C" OR "W", WITH BUSHING IF NECESSARY PER STANDARD SPECIFICATIONS, SECTION 206-3.
12. SEWERS TO BE TESTED FOR LEAKAGE PER SECTION 206-2.3.7 OF THE STANDARD SPECIFICATIONS AND SPECIAL PROVISIONS.
13. RESURFACE ALL TRENCHES WITHIN PAVED AREAS TO MEET L.A. COUNTY ROAD DEPT. OR CALIFORNIA STATE HIGHWAY REQUIREMENTS IN ACCORDANCE WITH PERMITS.

PROFILE, ALIGNMENT AND GRADE OF  
**SANITARY SEWERS** PAGE 1

TO BE CONSTRUCTED IN  
 TRACT NO. 29593  
 PRIVATE CONTRACT NO. 8739

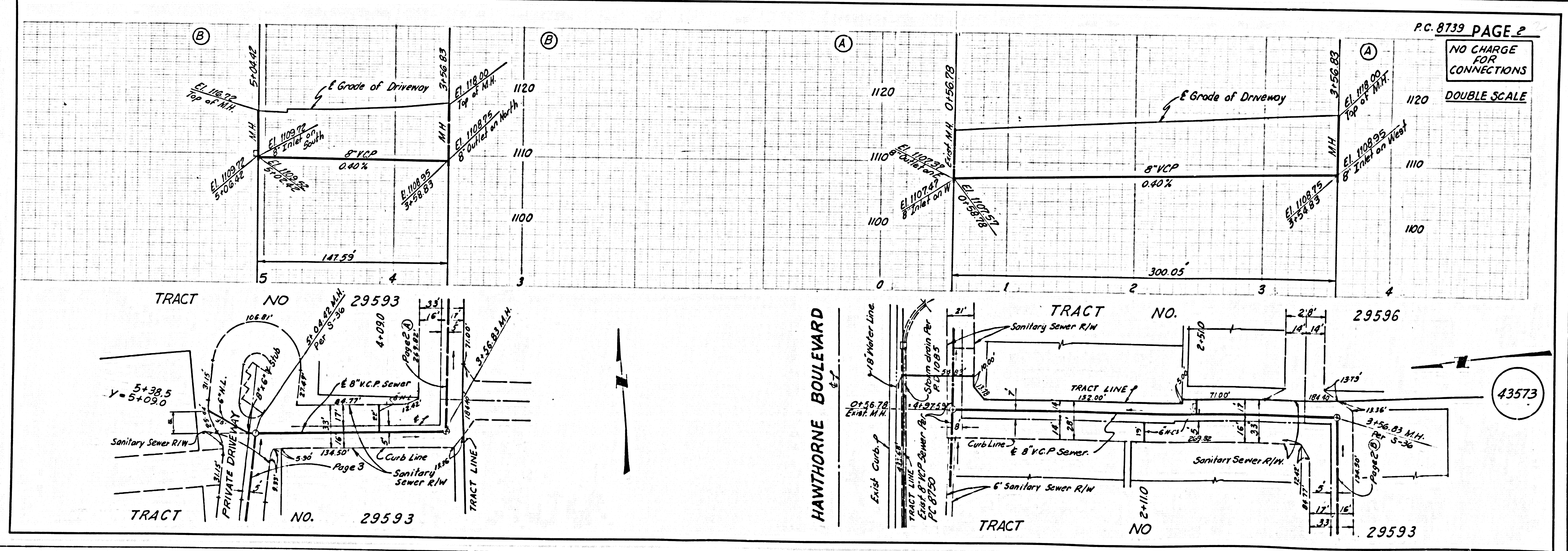
W.S. 27  
 2 SHEETS, 3 PAGES  
 SCALE: VERT. 1" = 4'  
 HORIZ. 1" = 40'  
 APRIL, 1972  
 PREPARED IN THE OFFICES OF  
 SIKAND ENGINEERING ASSOCIATES  
 15105 Burbank Blvd. VAN NUYS, CALIF. 91401.  
 BY: *John R. [Signature]*  
 REG. C.E. No. 3212

THE FOLLOWING LATEST REVISED STANDARD PLANS ON FILE IN THE OFFICE OF THE COUNTY ENGINEER SHALL APPLY IN THE CONSTRUCTION OF THIS PROJECT.

STANDARD PUBLIC SANITARY PROVISIONS	S-1
STANDARD MANHOLE	S-2
STANDARD MANHOLE STEP	S-3
STANDARD BRICK MANHOLE	S-4
STANDARD PRECAST CONCRETE MANHOLE	S-5
STANDARD TRENCH	S-6
STANDARD TRENCH WITHIN	S-7
STANDARD TRENCH WITHIN	S-8
STANDARD TRENCH WITHIN	S-9
STANDARD TRENCH WITHIN	S-10
STANDARD TRENCH WITHIN	S-11
STANDARD TRENCH WITHIN	S-12
STANDARD TRENCH WITHIN	S-13
STANDARD TRENCH WITHIN	S-14
STANDARD TRENCH WITHIN	S-15
STANDARD TRENCH WITHIN	S-16
STANDARD TRENCH WITHIN	S-17
STANDARD TRENCH WITHIN	S-18
STANDARD TRENCH WITHIN	S-19
STANDARD TRENCH WITHIN	S-20
STANDARD TRENCH WITHIN	S-21
STANDARD TRENCH WITHIN	S-22
STANDARD TRENCH WITHIN	S-23
STANDARD TRENCH WITHIN	S-24
STANDARD TRENCH WITHIN	S-25
STANDARD TRENCH WITHIN	S-26
STANDARD TRENCH WITHIN	S-27
STANDARD TRENCH WITHIN	S-28
STANDARD TRENCH WITHIN	S-29
STANDARD TRENCH WITHIN	S-30
STANDARD TRENCH WITHIN	S-31
STANDARD TRENCH WITHIN	S-32
STANDARD TRENCH WITHIN	S-33
STANDARD TRENCH WITHIN	S-34
STANDARD TRENCH WITHIN	S-35
STANDARD TRENCH WITHIN	S-36
STANDARD TRENCH WITHIN	S-37
STANDARD TRENCH WITHIN	S-38
STANDARD TRENCH WITHIN	S-39
STANDARD TRENCH WITHIN	S-40
STANDARD TRENCH WITHIN	S-41
STANDARD TRENCH WITHIN	S-42
STANDARD TRENCH WITHIN	S-43
STANDARD TRENCH WITHIN	S-44
STANDARD TRENCH WITHIN	S-45
STANDARD TRENCH WITHIN	S-46
STANDARD TRENCH WITHIN	S-47
STANDARD TRENCH WITHIN	S-48
STANDARD TRENCH WITHIN	S-49
STANDARD TRENCH WITHIN	S-50
STANDARD TRENCH WITHIN	S-51
STANDARD TRENCH WITHIN	S-52
STANDARD TRENCH WITHIN	S-53
STANDARD TRENCH WITHIN	S-54
STANDARD TRENCH WITHIN	S-55
STANDARD TRENCH WITHIN	S-56
STANDARD TRENCH WITHIN	S-57
STANDARD TRENCH WITHIN	S-58
STANDARD TRENCH WITHIN	S-59
STANDARD TRENCH WITHIN	S-60
STANDARD TRENCH WITHIN	S-61
STANDARD TRENCH WITHIN	S-62
STANDARD TRENCH WITHIN	S-63
STANDARD TRENCH WITHIN	S-64
STANDARD TRENCH WITHIN	S-65
STANDARD TRENCH WITHIN	S-66
STANDARD TRENCH WITHIN	S-67
STANDARD TRENCH WITHIN	S-68
STANDARD TRENCH WITHIN	S-69
STANDARD TRENCH WITHIN	S-70
STANDARD TRENCH WITHIN	S-71
STANDARD TRENCH WITHIN	S-72
STANDARD TRENCH WITHIN	S-73
STANDARD TRENCH WITHIN	S-74
STANDARD TRENCH WITHIN	S-75
STANDARD TRENCH WITHIN	S-76
STANDARD TRENCH WITHIN	S-77
STANDARD TRENCH WITHIN	S-78
STANDARD TRENCH WITHIN	S-79
STANDARD TRENCH WITHIN	S-80
STANDARD TRENCH WITHIN	S-81
STANDARD TRENCH WITHIN	S-82
STANDARD TRENCH WITHIN	S-83
STANDARD TRENCH WITHIN	S-84
STANDARD TRENCH WITHIN	S-85
STANDARD TRENCH WITHIN	S-86
STANDARD TRENCH WITHIN	S-87
STANDARD TRENCH WITHIN	S-88
STANDARD TRENCH WITHIN	S-89
STANDARD TRENCH WITHIN	S-90
STANDARD TRENCH WITHIN	S-91
STANDARD TRENCH WITHIN	S-92
STANDARD TRENCH WITHIN	S-93
STANDARD TRENCH WITHIN	S-94
STANDARD TRENCH WITHIN	S-95
STANDARD TRENCH WITHIN	S-96
STANDARD TRENCH WITHIN	S-97
STANDARD TRENCH WITHIN	S-98
STANDARD TRENCH WITHIN	S-99
STANDARD TRENCH WITHIN	S-100

43572

COUNTY OF LOS ANGELES, CALIFORNIA  
 HARYET T. BRANDT, COUNTY ENGINEER  
 JOHN D. PARKHURST, CHIEF ENGINEER  
 APPROVED: *Robert [Signature]* 7-14-72  
 COUNTY ENGINEER  
 APPROVED: *[Signature]*  
 COUNTY ENGINEER  
 CHECKED: *[Signature]* 7-14-72  
 COUNTY ENGINEER  
 REG. C.E. NO. 62322  
 LOMITA BLDG. DIST. 12  
 I.N. 0250.02

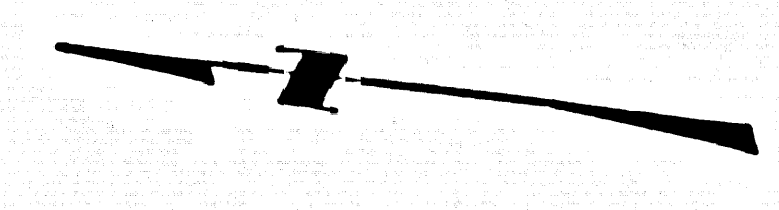
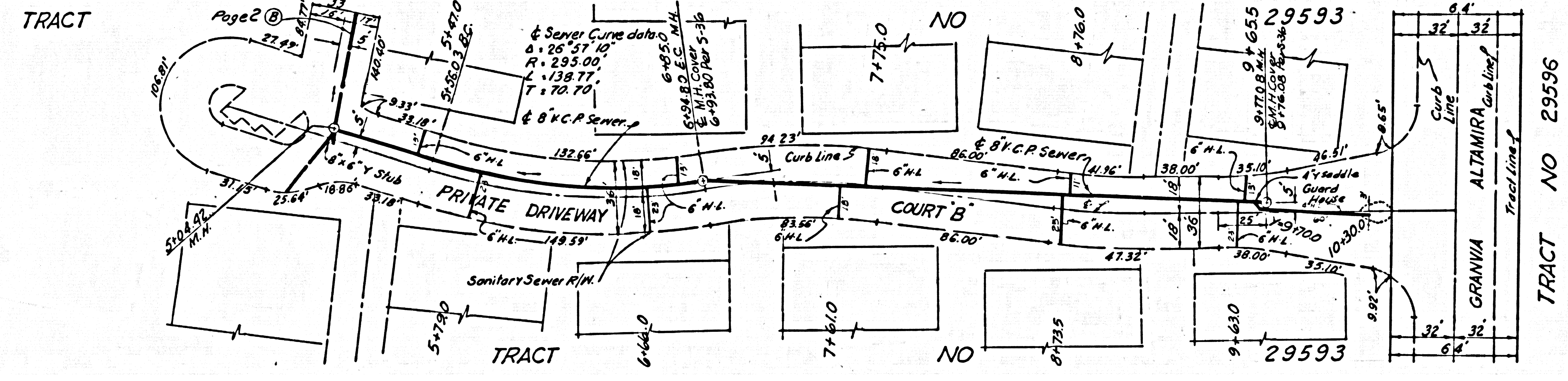
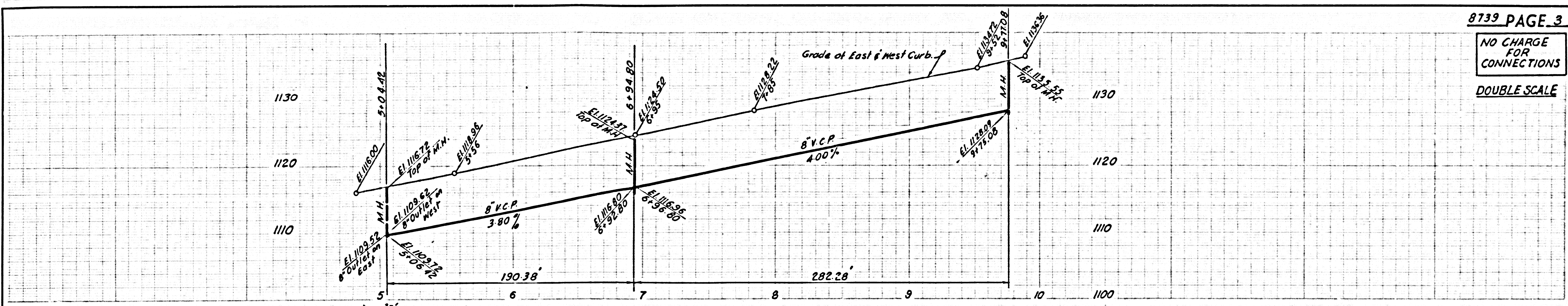


P.C. 8739 PAGE 2

NO CHARGE FOR CONNECTIONS  
 DOUBLE SCALE

43573

NO CHARGE FOR CONNECTIONS  
DOUBLE SCALE



43574