

B.M. 512379 ELEV. 82969
 F.C. BR CAP 5' x ANGEL POINT WINGWALL
 S.W. CORNER BRIDGE IN THE ALAMEDA
 ST OVER COMPTON CREEK 20' x 14' x 8' 6001
 S. ARTESIA BLVD. MKD. (B.M. 44-33)
 BASELINE QUAD. 19 62

THE FOLLOWING LATEST REVISED STANDARD
 PLANS ON FILE IN THE OFFICE OF THE COUNTY
 ENGINEER SHALL APPLY IN THE CONSTRUCTION
 OF THIS PROJECT:
 MINIMUM PUBLIC SAFETY REQUIREMENTS 5-2
 SHALLOW MANHOLE 5-7
 RECT. MANHOLE FRAME & COVER 5-16
 ALLOWABLE TRENCH WIDTH 5-33
 SPECIAL SUPPORT CASE II 5-22

NOTE:
 THE FORCE MAIN SHALL NOT BE ACTIVATED
 UNTIL RC 8743-A (PUMP STATION) IS
 APPROVED AND INSTALLED.

PRIVATE SEWER
 CARSON BLDG. DIST. NO. 13

PROFILE ALIGNMENT AND GRADE OF
 FORCE MAIN P.C. 8743
 PAGE 1

TO BE CONSTRUCTED IN
 ANA STREET
 FOR
 PARCEL 3, P.M. NO. 584
 PRIVATE CONTRACT NO. 8743

W.S. 32
 2 SHEETS, 3 PAGES
 SCALE: VERT. 1" = 4'
 HORIZ. 1" = 40'
 APRIL, 1972
 PREPARED IN THE OFFICES OF
 E. L. PEARSON & ASSOCIATES

By: Robert O. Shultz
 REG. C. E. NO. 17062

FOR LEGEND SEE PLAN NO. 5-1

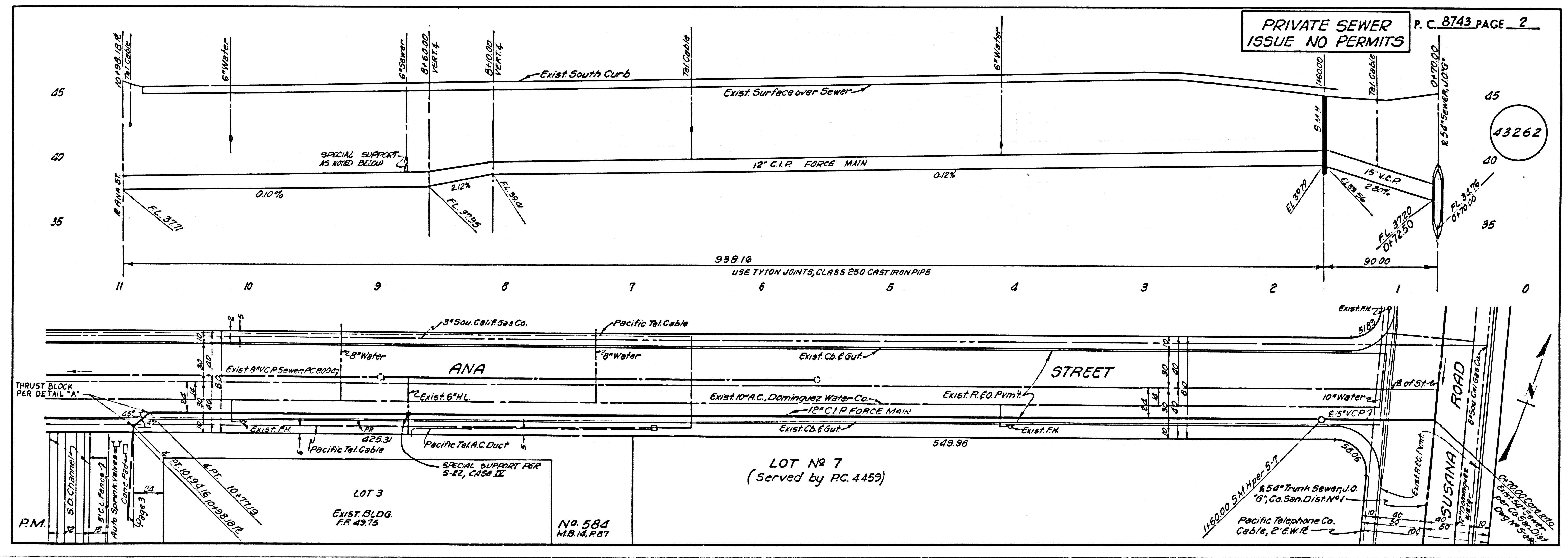
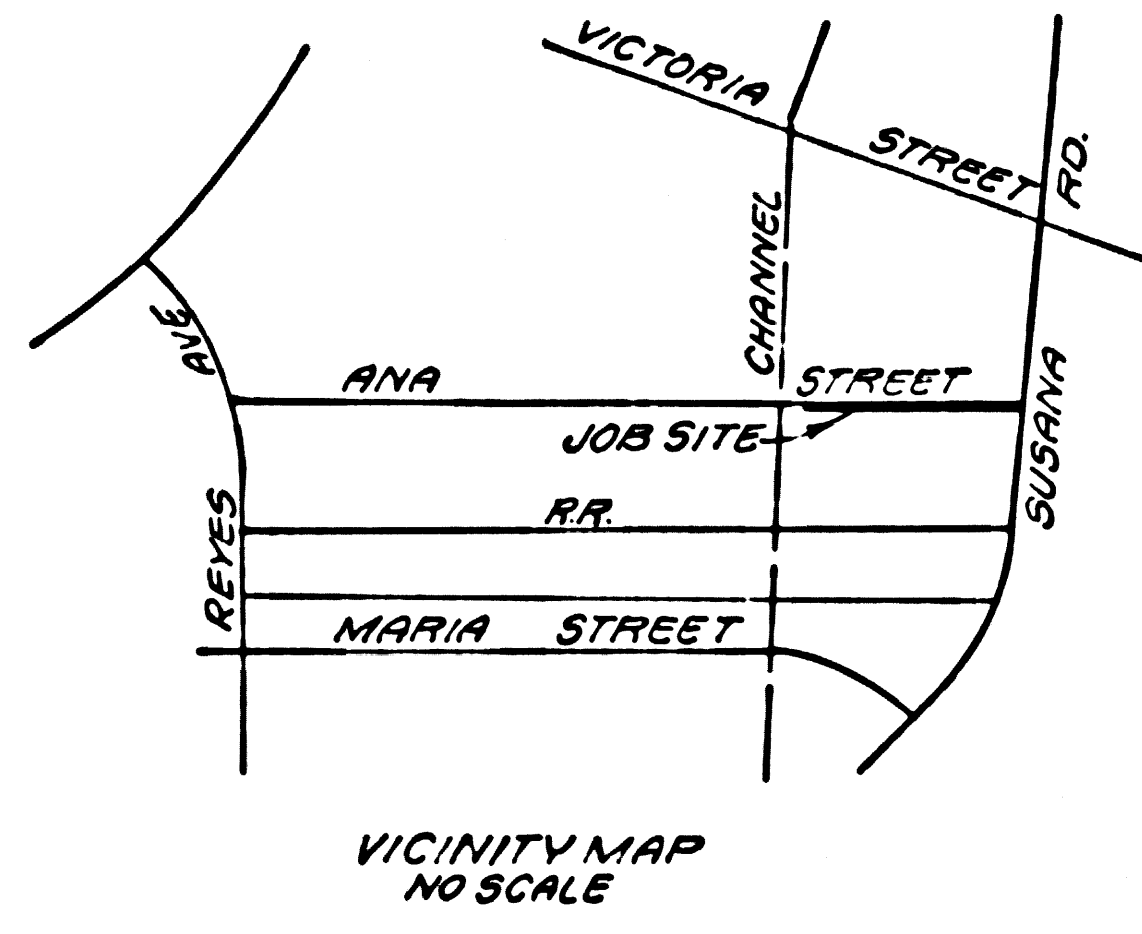
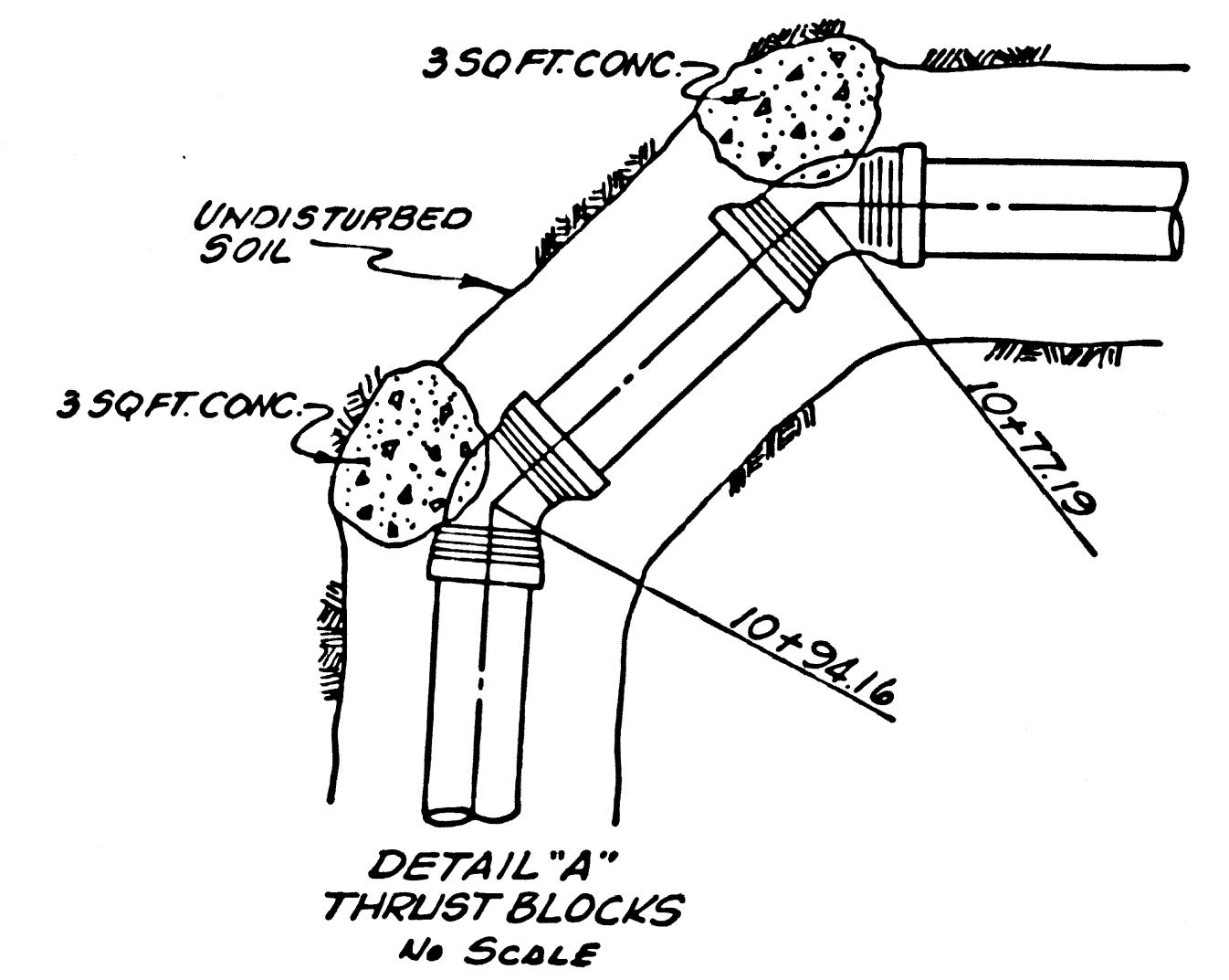
NOTE:
 GRADES TO WHICH THIS IMPROVEMENT IS TO BE CONSTRUCTED ARE SHOWN ON PLANS AND PROFILE. GRADE POINTS FOR TOP OF
 CURBS, CENTER LINE OF STREETS, OR CENTER LINE OF ALLEYS ARE SHOWN BY CIRCLES ON PROFILE. AT ALL POINTS BETWEEN DESIGNATED
 POINTS THE GRADE SHALL BE ESTABLISHED SO AS TO CONFORM TO A STRAIGHT LINE DRAWN BETWEEN SAID DESIGNATED POINTS.
 ELEVATIONS ARE IN FEET ABOVE U.S.C. & G.S. SEA LEVEL DATUM OF 1929.
 THIS DRAWING AND THE DATA HEREON ARE HEREBY MADE A PART OF THE SPECIFICATIONS.
 WORK SHALL BE CONSTRUCTED ACCORDING TO STANDARD SPECIFICATIONS DATED 1971 WITH 1971 SUPPLEMENT AND SPECIAL PROVISIONS
 FOR CONSTRUCTION OF SEWER PIPE (PREPARED BY THE COUNTY ENGINEER AND SHOWN BY THE PROFILES) BY THE COUNTY ENGINEER.
 BEFORE WORK CAN BE STARTED, THE CONTRACTOR MUST OBTAIN A PERMIT TO EXCAVATE IN COUNTY FROM THE L.A. COUNTY
 ROAD DEPT., DISTRICT OFFICE NO. 3, AND PAY A FEE TO THE COUNTY ENGINEER, COUNTY ENGINEERING BUILDING,
 5150 E. IMPERIAL HWY. OR CENTINELA VALLEY REGIONAL OFFICE, SUFFICIENT TO COVER THE COST OF
 CONSTRUCTION INSPECTION AND RELATED PLANS.
 APPROVAL OF THIS PLAN BY THE COUNTY OF LOS ANGELES DOES NOT CONSTITUTE A REPRESENTATION AS TO THE ACCURACY OF THE
 LOCATION OF OR THE EXISTENCE OR NON-EXISTENCE OF ANY UNDERGROUND UTILITY PIPE, OR STRUCTURE WITHIN THE LIMITS OF THIS
 PROJECT. THIS NOTE APPLIES TO ALL PAGES.
 IF WORK IS TO BE DONE IN A STATE HIGHWAY, A PERMIT MUST BE OBTAINED FROM THE STATE OF CALIFORNIA, DIVISION OF HIGHWAYS,
 128 SOUTH BRANBURN STREET, LOS ANGELES, CALIFORNIA.

COUNTY OF LOS ANGELES, CALIFORNIA
 HARVEY T. BRANDT, COUNTY ENGINEER J. D. PARKHURST, CHIEF ENGINEER
 APPROVED BY: [Signature] 5-11-72 ASSISTANT SANITATION ENGINEER
 APPROVED BY: [Signature] 5-11-72 OFFICE ENGINEER

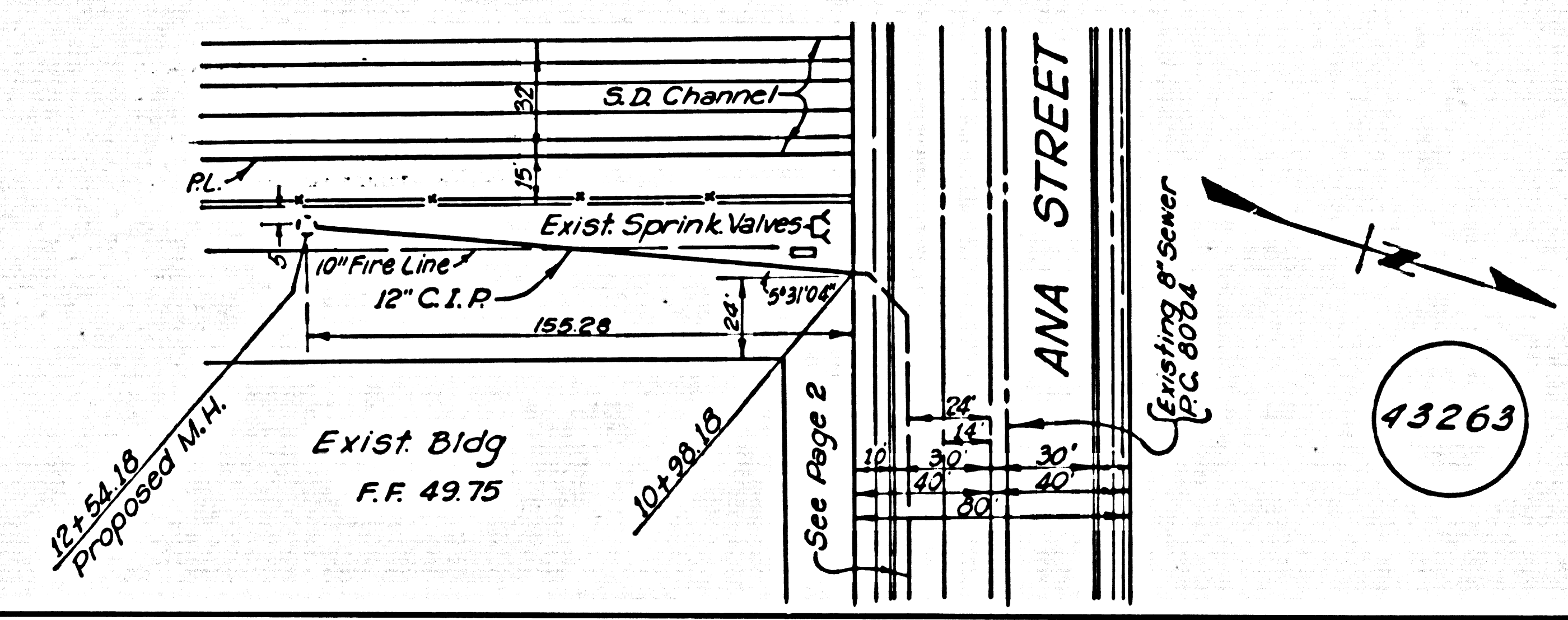
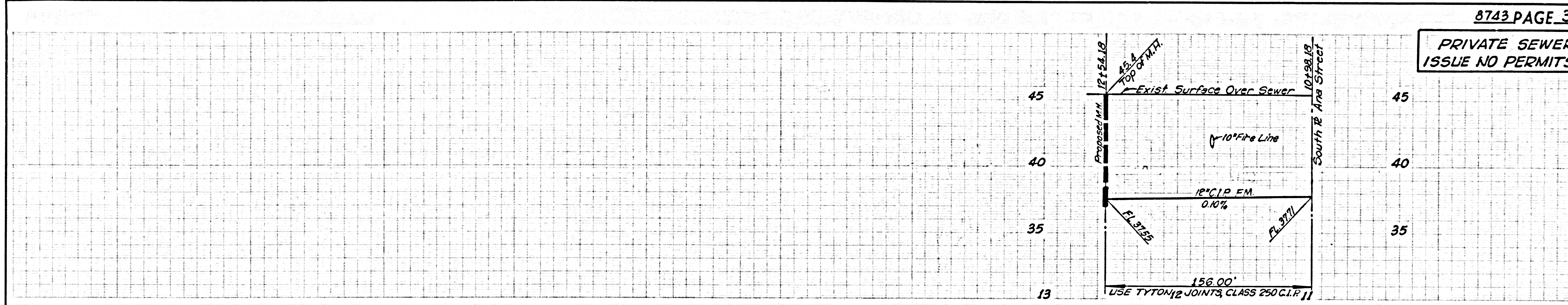
CHECKED BY: [Signature] 5-11-72
 REG. C. E. NO. 10643

NOTICE TO CONTRACTOR
 The assistance and location of any underground
 utility pipes or structures shown on these plans
 are obtained by a search of the available records.
 To the best of my knowledge there are no existing
 utilities except as shown on these plans.
 The contractor is required to take due precau-
 tionary measures to protect the utility lines shown
 and any other lines not of record or not shown on
 these plans.
 Robert O. Shultz
 REG. C. E. NO. 17062

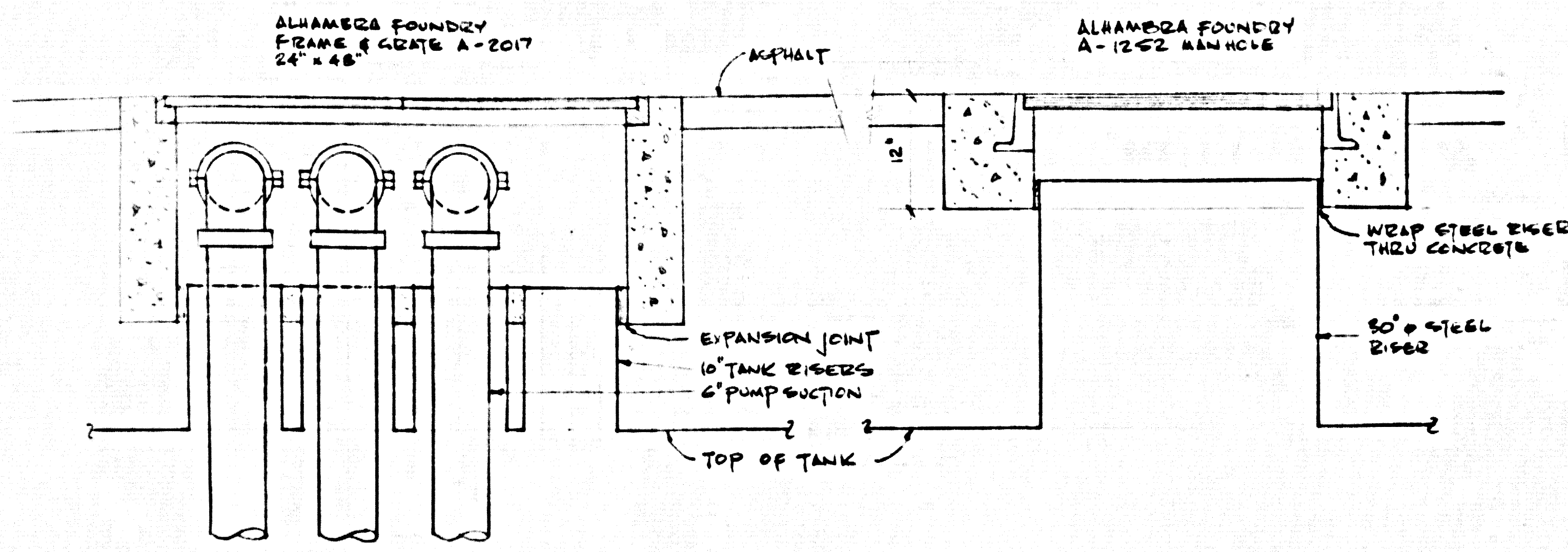
ISSUE NO PERMITS



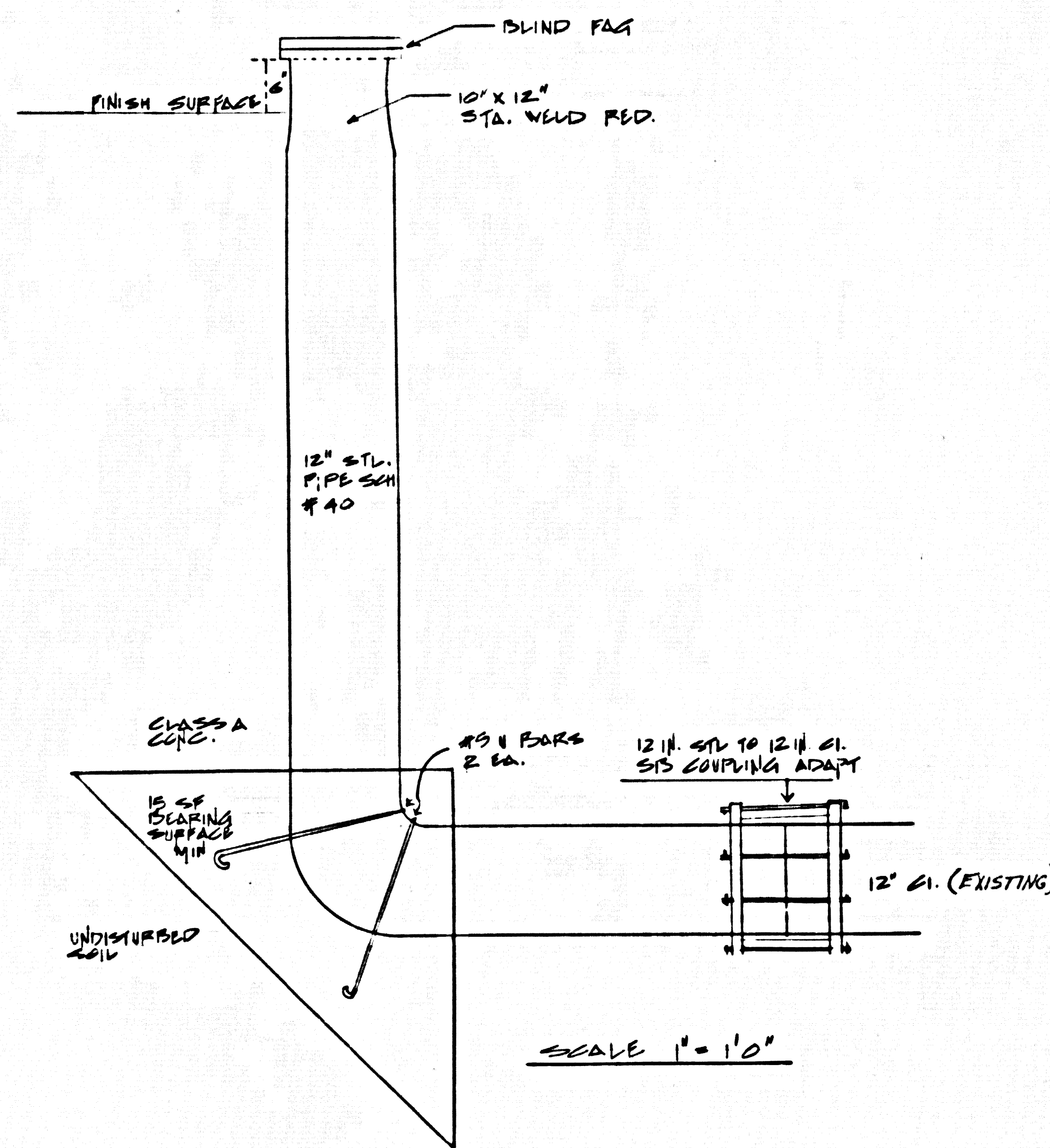
PRIVATE SEWER
ISSUE NO PERMITS



43263



SECTION A-A

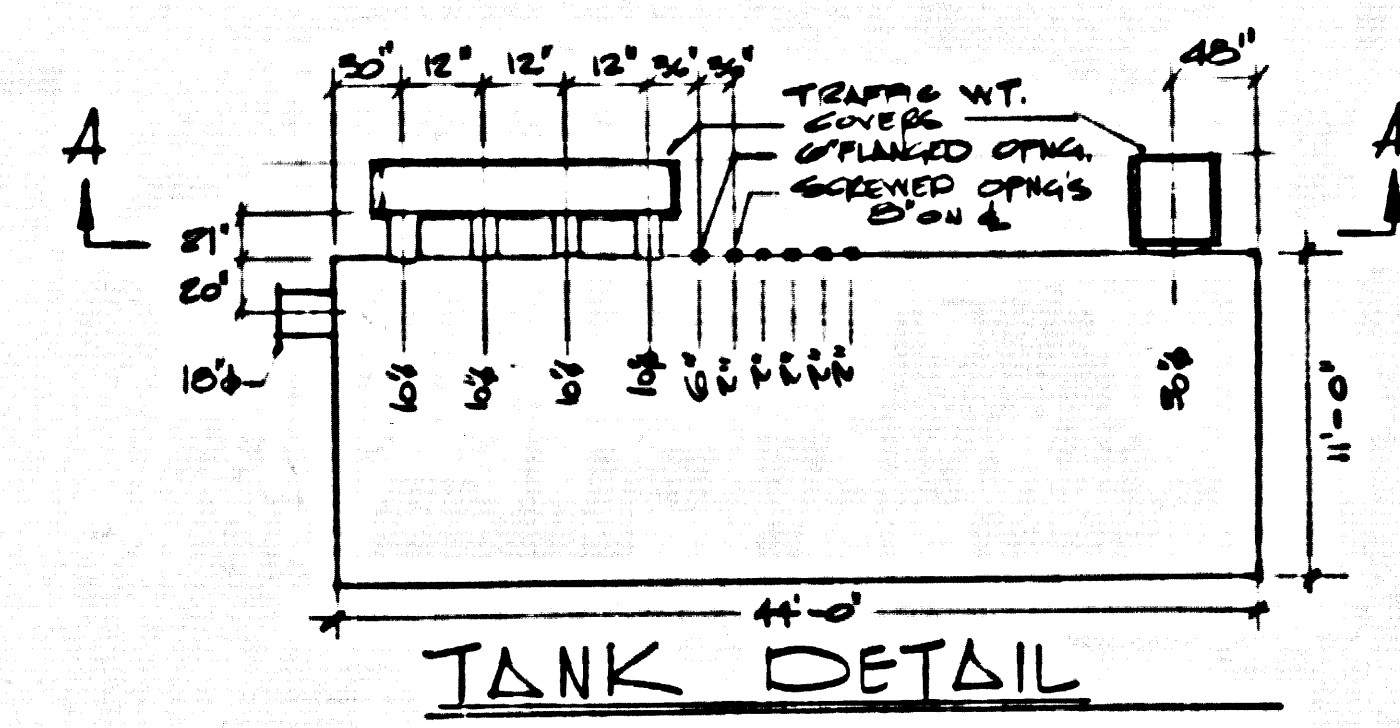


THRUST BLOCK DETAIL

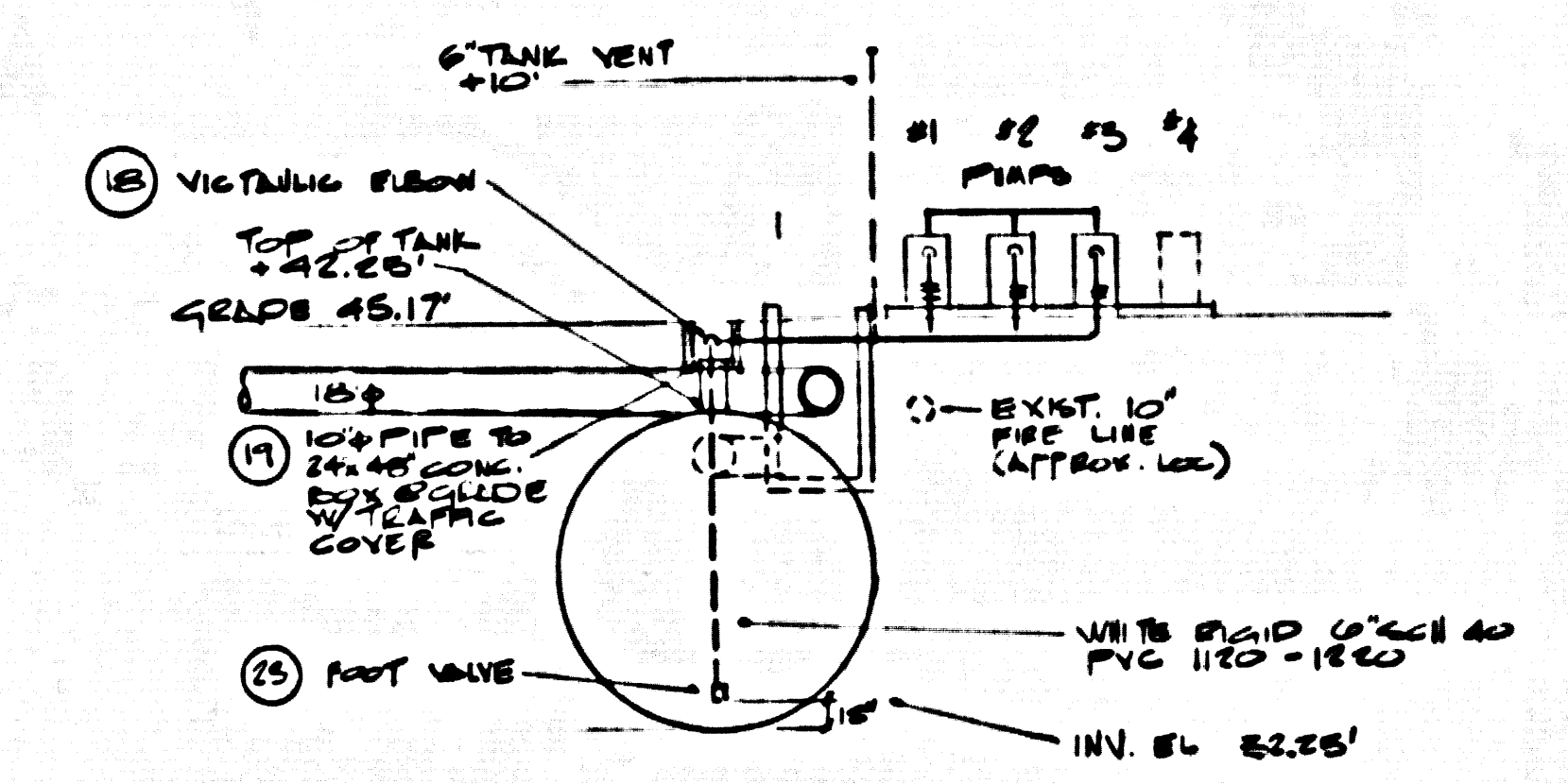
SCHEDULE OF MATERIALS		
NO	DESCRIPTION OF ITEM	AMT
1	PUMPS - MARLOW-BRPP, MODEL T6AS 15P 40TDS @ 500 GPM 1/2\"/>	
2	MOTOR - RELIANCE 1170 RPM 15HP 480V, 3PH 3W	2
3	PUMP CONTROL - ELECTRO FLOW MODEL 801-500 SERIES	2
4	STRAINER - MARLOW 250VY-6"	3
5	FLOWMETER - BIF MOD 0127-05-2251 FIBERGLASS UNIVERSAL VENTUR MAX. 2000 GPM = 240\"/>	
6	RECORDER - BIF MOD 0123-01-0707 TON 2000 GPM = 240\"/>	
7	TRANSMITTER - NONE	
8	ELECTRICAL PANEL - 1000 480V, 3PH 24\"/>	
9	VALVE - 6\"/>	
10	6\"/>	
11	6\"/>	
12	6\"/>	
13	10\"/>	
14	10\"/>	
15	10\"/>	
16	10\"/>	
17	TANK - 11' x 44', 20,000 GAL. PLUS 1/2\"/>	
18	6\"/>	
19	6\"/>	
20	TANK INCP. MANHOLE - ALHAMBRA FOUNDRY A-1852 30\"/>	
21	MANHOLE SUPPORTS - 2\"/>	
22	TEST VALVE - 3/4\"/>	
23	FOOT VALVES - FIG. 1-6 CLEARFLOW	2
24	AIR RELEASE - #144-24 W/PO OR EQUAL	1

GENERAL NOTES.

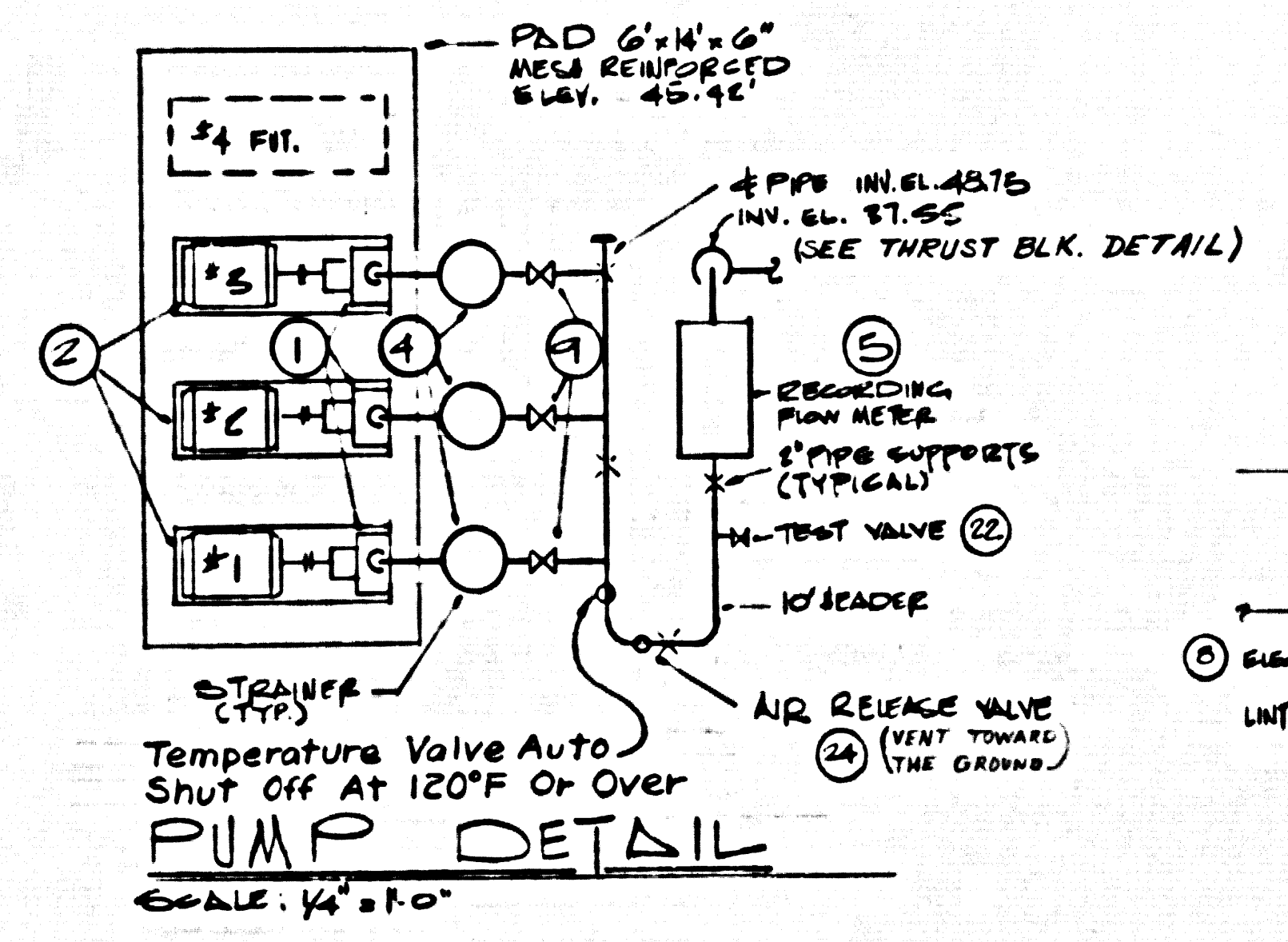
1. THE CONTRACTOR SHALL VERIFY ALL DIMENSIONS.
2. THE PUMPING EQUIPMENT MANUFACTURERS REPRESENTATIVE SHALL SUPERVISE THE INSTALLATION, STARTING & TESTING OF THE EQUIPMENT.
3. ALL CONSTRUCTION JOINTS TO BE WATERPROOF. THERE SHALL BE NO TRACE OF WATER LEAKS INTO PUMP STATION UPON COMPLETION OF THE PROJECT. PIPE SHALL BE WELDED SCHEDULE 40 STEEL.
4. ALL WORK AND MATERIALS TO BE GUARANTEED FOR NOT LESS THAN ONE (1) YEAR.
5. CONCRETE SHALL BE PORTLAND CEMENT CONCRETE AND SHALL DEVELOP A MINIMUM COMPRESSIVE STRENGTH OF 5000 PSI AFTER 28 DAYS.
6. BEDDING & BACKFILL SHALL BE COMPACTED TO 90% RELATIVE DENSITY. BACKFILL SHALL NOT BE COMPACTED BY FLOODING, SLUICING OR JETTING, OR BY ANY OTHER HYDRAULIC METHOD WHICH WILL SATURATE THE SOIL.
7. BACKFILL SHALL BE FROM THE MATERIAL EXCAVATED OR SHALL BE GRANULAR MATERIAL APPROVED BY THE COUNTY ENGINEER.
8. ALL PRACTICES AND PROCEDURES, MATERIALS AND PLACEMENT OF MATERIALS SHALL CONFORM IN EVERY RESPECT TO THE LOS ANGELES COUNTY BUILDING LAWS, LATEST EDITION, THE COUNTY OF L.A. SPECIAL PROVISIONS FOR THE CONSTRUCTION OF SANITARY SEWER, DATED APRIL 10, 1978, AND TO THE STANDARD SPECIFICATIONS FOR PUBLIC WORK CONSTRUCTION (1970 EDITION WITH 1971 AND 1972 SUPPLEMENTS) OR AS OTHERWISE DIRECTED BY THE COUNTY ENGINEER.
9. ALL PERMITS SHALL BE OBTAINED & PAID FOR BY THE CONTRACTOR.
10. THE CONTRACTOR SHALL APPLY ALL MATERIALS AND EQUIPMENT UNLESS OTHERWISE NOTED.
11. THE CONTRACTOR SHALL FINISH AND INSTALL PART II STRICT ACCORDANCE WITH THE MANUFACTURERS RECOMMENDATIONS.
12. NO REVISIONS SHALL BE MADE IN THESE PLANS WITHOUT THE APPROVAL OF THE COUNTY ENGINEER.
13. THE CONTRACTOR SHALL NOTIFY THE CONSTRUCTION DIVISION BY TELEPHONE MADISON 7-4747 EXT. 61531 AT LEAST TWENTY-FOUR (24) HOURS BEFORE STARTING ANY WORK UNDER THIS CONTRACT.
14. RESURFACE ALL TRENCHES WITHIN PAVED AREAS WITH MATERIAL EQUAL TO EXISTING.
15. ALL STATE AND LOCAL TRENCH SAFETY ORDERS TO BE STRICTLY ENFORCED.
16. ACCESS FOR CIV. ENGR. INSPECTION SHALL BE MADE AVAILABLE DURING NORMAL WORKING HOURS.



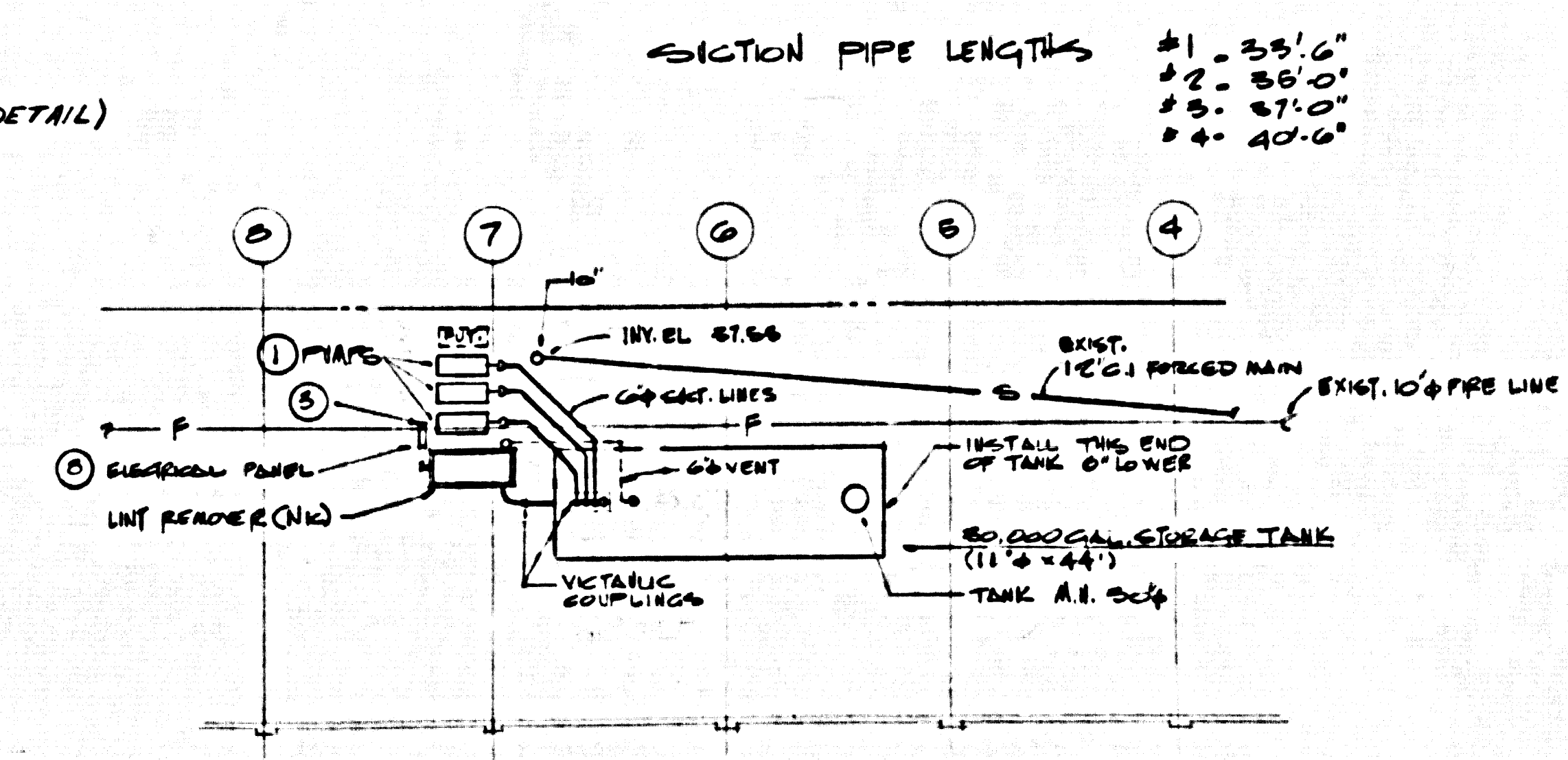
TANK DETAIL



PUMP STATION ELEVATION
SCALE: 1/8\"/>



PUMP DETAIL
SCALE: 1/4\"/>



PUMP STATION PLAN
SCALE: 1/8\"/>

43554

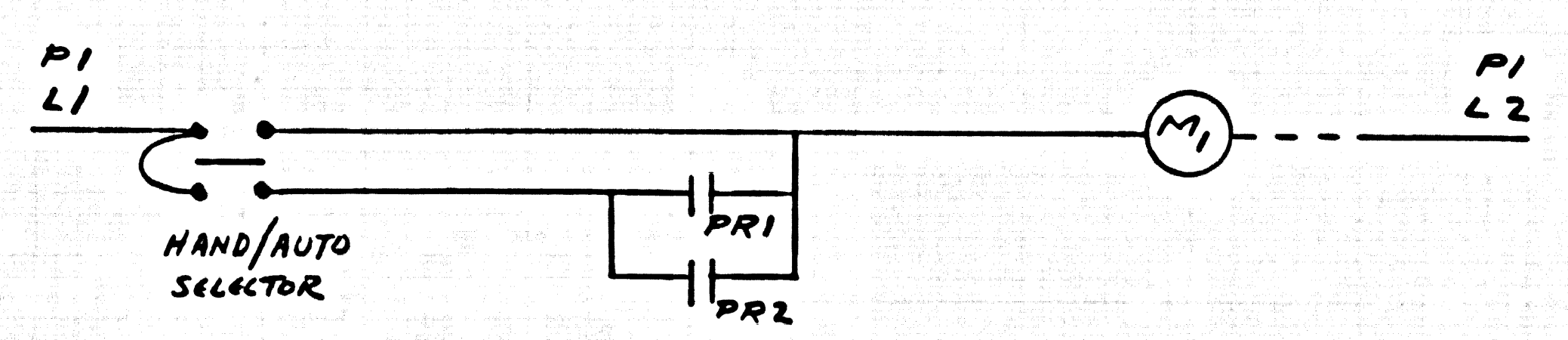
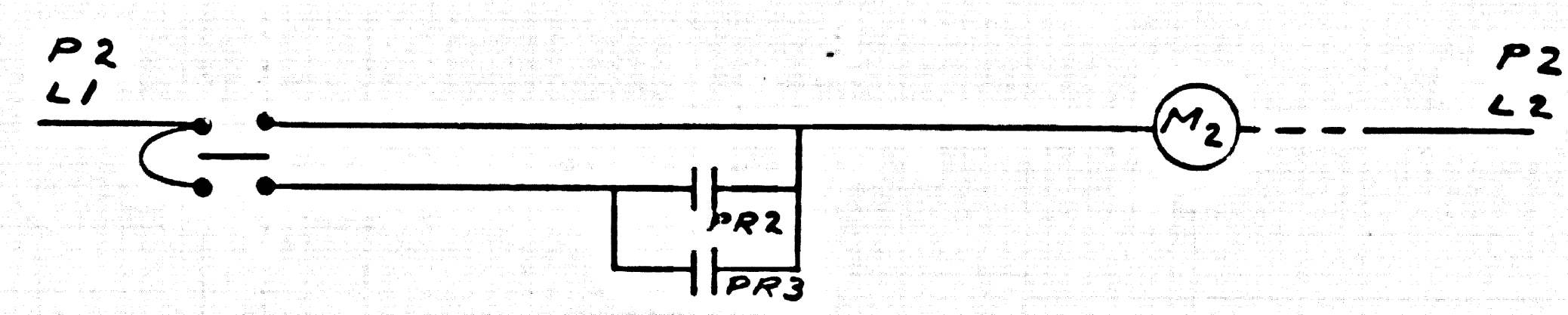
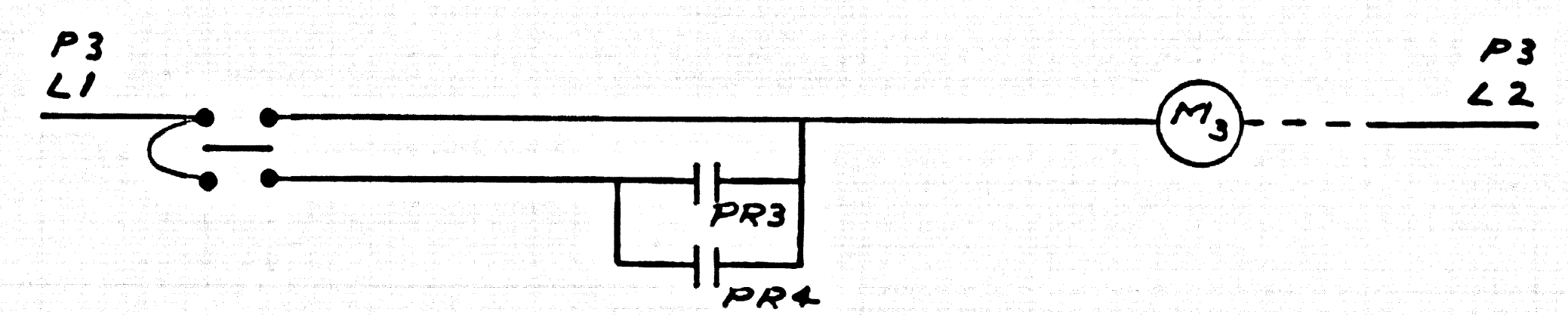
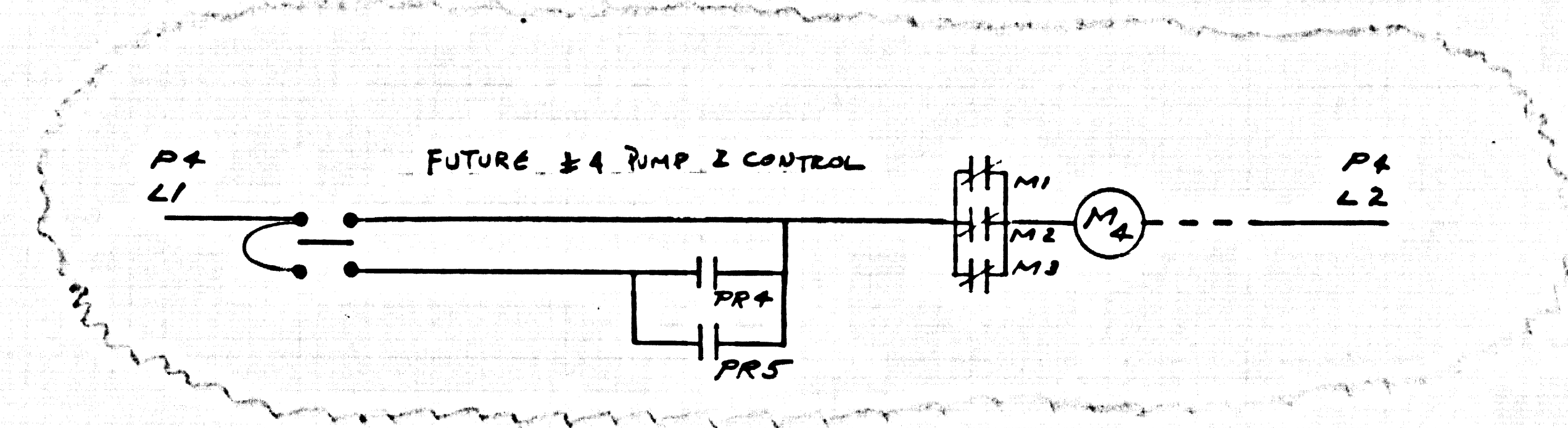
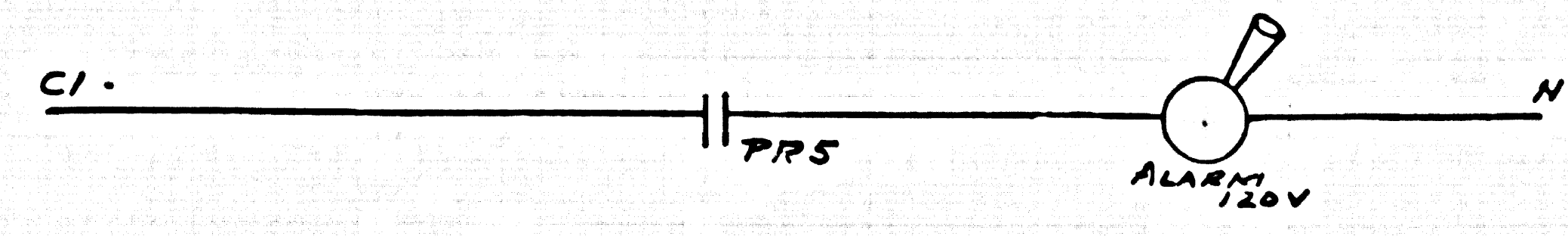
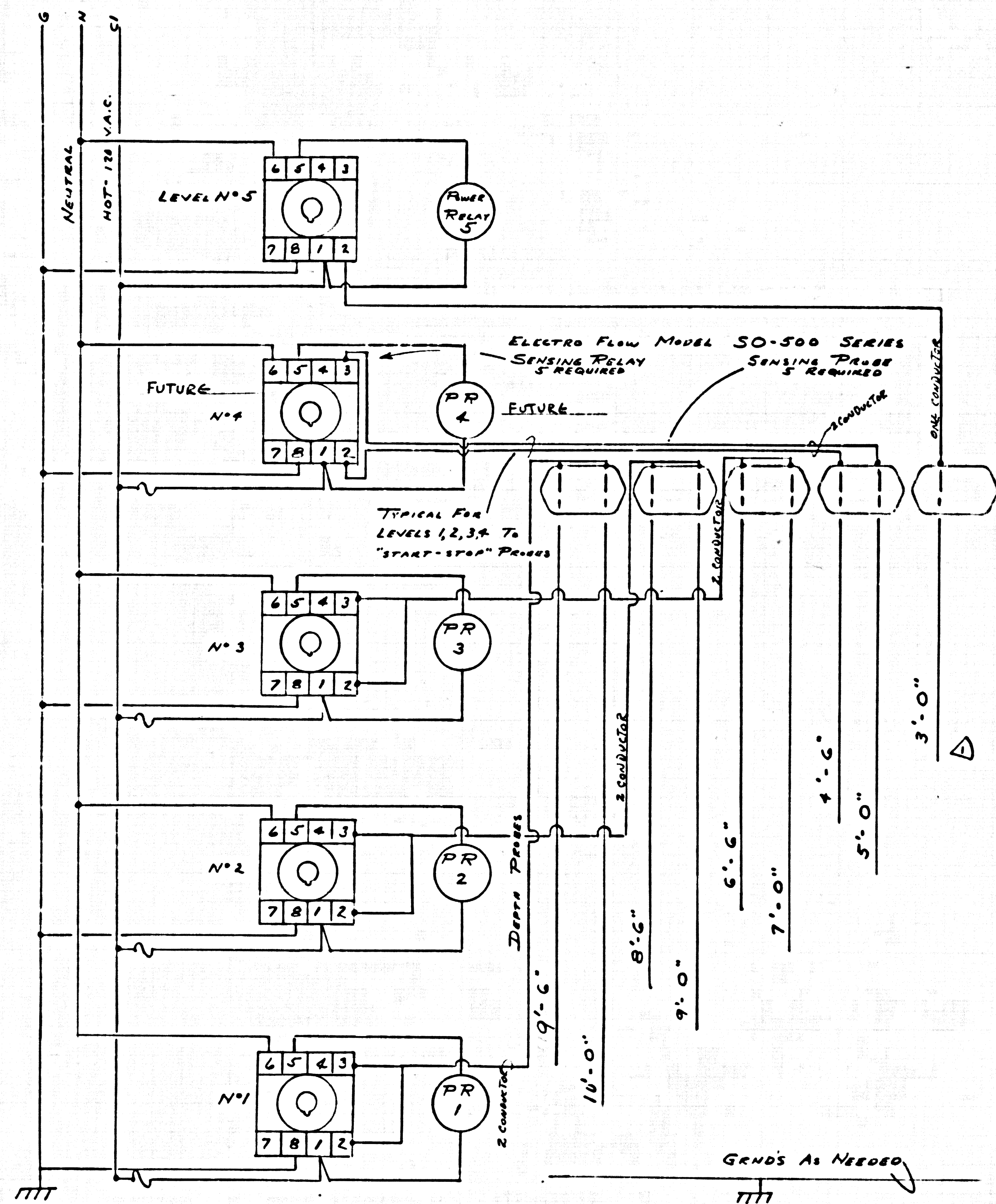
WESTERN DYING & FIN. CO.
1000 S. GARDEN ST.
LOS ANGELES, CALIF. 90007
DATE: 12/1/77
SHEET 1 OF 2

ELEV. 66.709
P.C. 80.00
C.P. 80.00
T.A. 80.00
P.T. 80.00
ELEV. 66.709
P.C. 80.00
C.P. 80.00
T.A. 80.00
P.T. 80.00

PRIVATE INDUSTRIAL WASTE PUMP STATION @ ANA STREET FOR PARCEL 3, P.M. #504

PRIVATE CONTRACT # 8743-A
CARSON BUILDING DIST. # 13
MAY 1972

CITY OF LOS ANGELES
COUNTY ENGINEER
J.D. PARSONS
APPROVED: [Signature]
DATE: 12/1/77



All electrical wiring and/or apparatus to be installed in a workmanlike manner by a licensed electrical contractor in conformance with National Electrical Code, State Electrical Safety Orders, and applicable local codes.

45555

WESTERN DYEING & FINISHING
3104 E. ANA ST. COMPTON, CA.

PRIVATE INDUSTRIAL WASTE PUMP STATION
3104 E. ANA ST. COMPTON, CA.
P.C. 8743A

E 21
F/S 3710
SHEET 2
OF 2

REV. 5/15-72