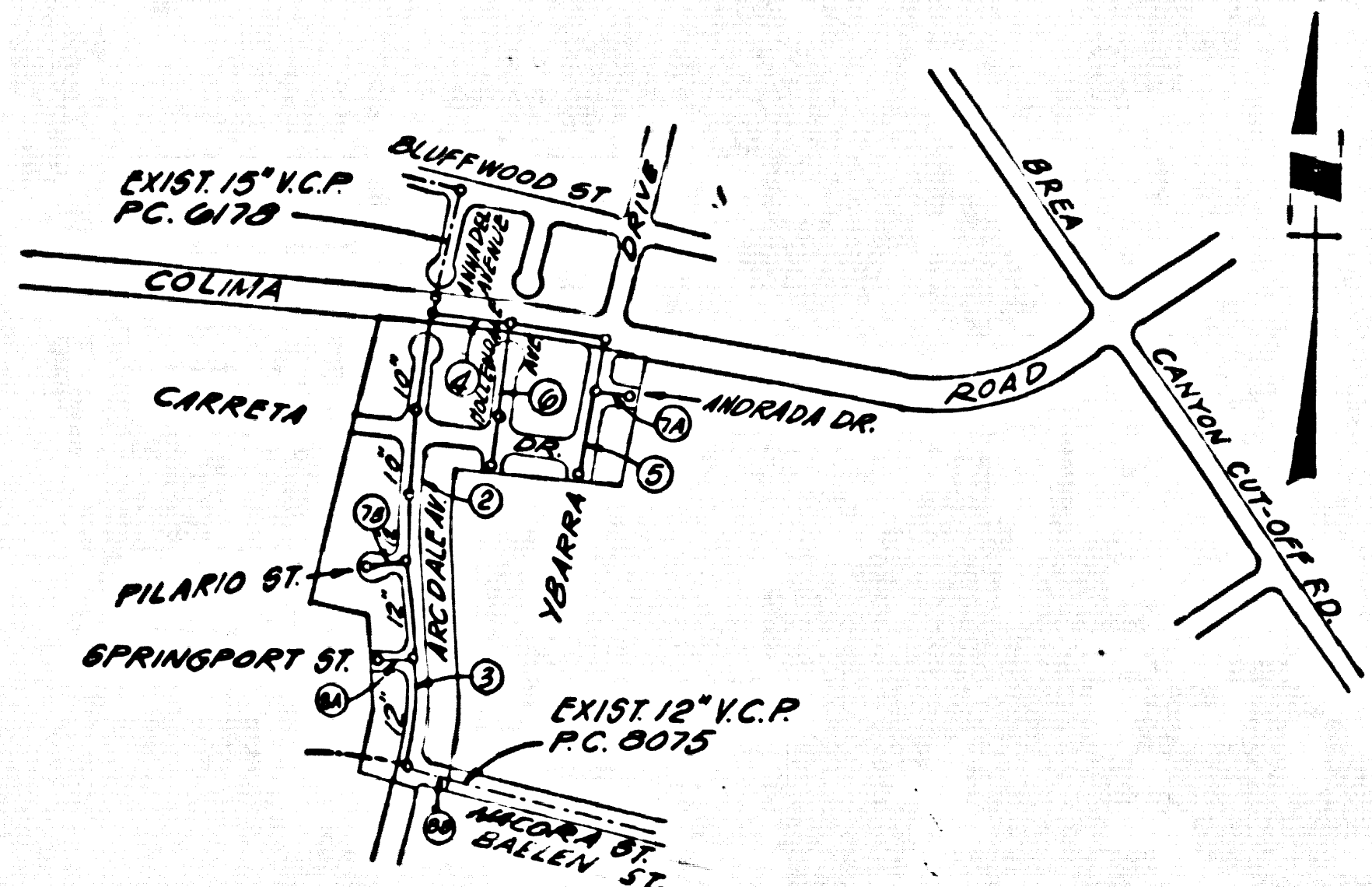


B.M. 25 5104 ELEV. 528.633'
 A D.B.M. TAG IN WEST CURB 3' NORTH
 OF 21' C.P. AT NORTH WEST CORNER COLIMA
 ROAD (FIFTH AVE.) & YARRA DRIVE 80 FT.
 NORTH 18' P.T. W. & INTERSECTION.
 OTTER BEIN QUAD. 1970



P.C. 8744R
 INDEX MAP
 SCALE 1"=600'

County Sanitation Districts shall be notified prior to the following so that required inspections can be made (Phone 337-1025 - 838-1181)

As contractor for the removal of industrial wastes shall be made to reports shown on these drawings without written permission from the Chief Engineer and General Manager of the County Sanitation Districts.

- GENERAL NOTES:**
1. ELEVATIONS ARE IN FEET ABOVE U.S.C. & G.S. SEA LEVEL DATUM OF 1929.
 2. NO REVISIONS SHALL BE MADE IN THESE PLANS WITHOUT THE APPROVAL OF THE COUNTY ENGINEER.
 3. NO REPRESENTATIVE OF THE COUNTY ENGINEER WILL SURVEY OR LAY OUT ANY PORTION OF THE WORK.
 4. GRADES TO WHICH THIS IMPROVEMENT IS TO BE CONSTRUCTED ARE SHOWN ON PLANS AND PROFILES. GRADE POINTS FOR TOP OF CURBS, CENTER LINE OF STREETS, OR CENTER LINE OF ALLEYS ARE SHOWN BY CIRCLES ON PROFILES. AT ALL POINTS BETWEEN DESIGNATED POINTS THE GRADE SHALL BE ESTABLISHED SO AS TO CONFORM TO A STRAIGHT LINE DRAWN BETWEEN SAID DESIGNATED POINTS.
 5. THE PRIVATE ENGINEER SHALL FURNISH THE COUNTY ENGINEER WITH GRADE SHEETS AND STATIONING FOR ALL HOUSE LATERALS AND "T" OR "Y" BRANCHES AND SHALL PROVIDE STAKES FOR THEM AT THEIR PROPER LOCATIONS WITH STATIONING PLAINLY MARKED. ALL HOUSE LATERALS SHALL BE CONSTRUCTED IN A STRAIGHT ALIGNMENT AT RIGHT ANGLES FROM THE MAIN LINE SEWER EXCEPT AS SHOWN ON THE PLANS. HOUSE LATERALS FROM CHIMNEYS SHALL NOT HAVE AN ANGLE OF LESS THAN 45° WITH THE MAIN LINE SEWER. ANY CHANGE IN ALIGNMENT SHALL BE REQUESTED BY WRITING BY THE PRIVATE ENGINEER.
 6. THE PRIVATE ENGINEER SHALL FURNISH THE HOUSE LATERAL DRYER AT THE PROPERTY LINE BELOW THE TOP OF CURB ELEVATION FOR EACH HOUSE LATERAL ON THE GRADE SHEET.
 7. BEFORE WORK CAN BE STARTED, THE CONTRACTOR MUST OBTAIN A PERMIT TO EXCAVATE IN COUNTY STREETS FROM THE L.A. COUNTY ROAD DEPT., DISTRICT OFFICE NO. _____ AND PAY A FEE TO THE COUNTY ENGINEER, ROOM 28, COUNTY ENGINEERING BUILDING, 9550 E. IMPERIAL HWY. DOWNEY OR IN E. BONITA BLVD. SAN DIMAS REGIONAL OFFICE, TO COVER THE COST OF CONSTRUCTION INSPECTION AND RECORD PLANS.
 8. IF WORK IS TO BE DONE IN A STATE HIGHWAY, A PERMIT MUST BE OBTAINED FROM THE STATE OF CALIFORNIA, DIVISION OF HIGHWAYS, 128 SOUTH SPRING STREET, LOS ANGELES, CALIFORNIA.
 9. APPROVAL OF THIS PLAN BY THE COUNTY OF LOS ANGELES DOES NOT CONSTITUTE A REPRESENTATION AS TO THE ACCURACY OF THE LOCATION OF OR THE EXISTENCE OR NON-EXISTENCE OF ANY UNDERGROUND UTILITY PIPE, OR STRUCTURE WITHIN THE LIMITS OF THIS PROJECT. THIS NOTE APPLIES TO ALL PAGES.
 10. REFER TO SECTION 7-18.4.3 OF THE STANDARD SPECIFICATIONS, REGARDING SAFETY ORDERS.

TO BE CONSTRUCTED IN
 TRACT No 28453

PRIVATE CONTRACT NO. 8744R

W.S. 38 E/A
 4 SHEETS, 8 PAGES
 SCALE: VERT. 1"=8'
 HORIZ. 1"=40'
 JUNE, 1972
 PREPARED IN THE OFFICES OF
 R.S. ANOVIC, CIVIL ENGINEER
 7906 BEVERLY BLVD., L.A. CALIF.
 BY: R.S. Anovic
 REG. C.E. No. 9284

43504

THE FOLLOWING LATEST REVISED STANDARD PLANS ON FILE IN THE OFFICE OF THE COUNTY ENGINEER SHALL APPLY IN THE CONSTRUCTION OF THIS PROJECT.

LEGEND	8-1
MINIMUM PUBLIC SAFETY REQUIREMENTS	8-2
BRICK MANHOLE	8-3
STANDARD MANHOLE STEP	8-17
BRICKWORK FOR SEWER PIPE	8-20
CRACKING AND REPAIRMENT	8-22
PIPE OR TIE SUPPORT	8-26
ALLOWABLE TRENCH WIDTHS	8-28
LOCKING MANHOLE FRAME AND COVER	8-30
NON-REINFORCED PRECAST CONCRETE MANHOLE	8-36

CONSTRUCTION NOTES:

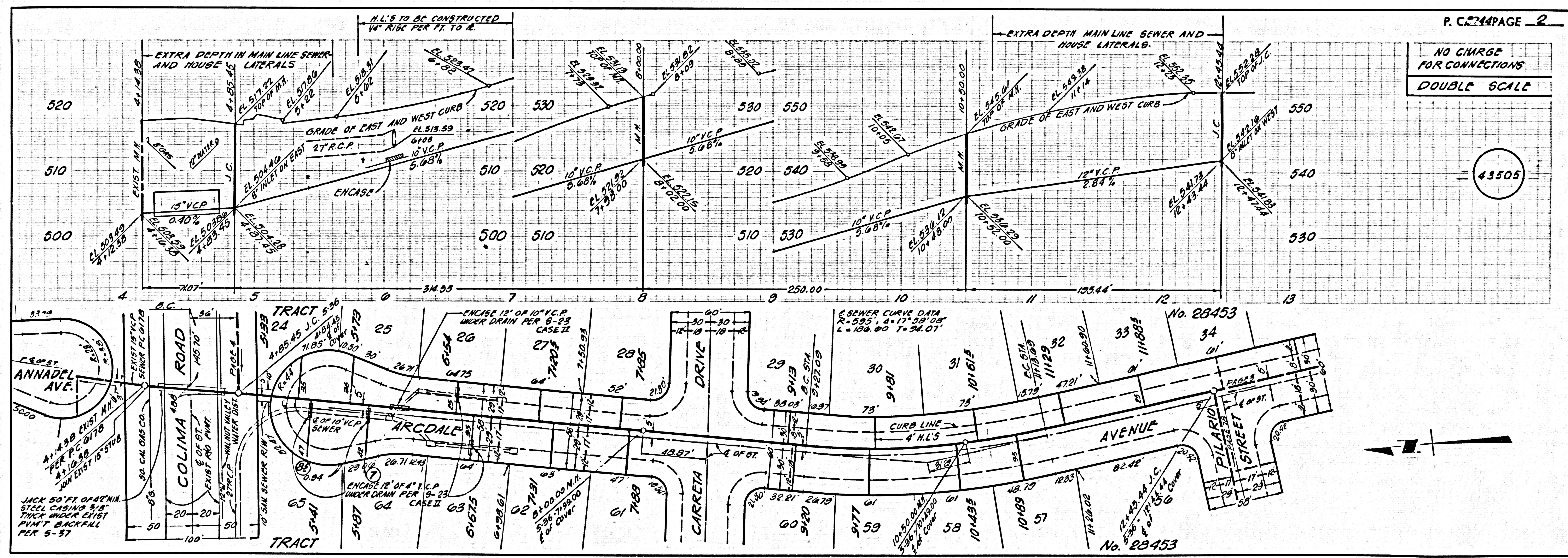
1. WORK SHALL BE CONSTRUCTED ACCORDING TO THE STANDARD SPECIFICATIONS FOR PUBLIC WORKS CONSTRUCTION (1978 EDITION) WITH THE SUPPLEMENTED AND COUNTY ENGINEER SPECIAL PROVISIONS FOR THE CONSTRUCTION OF SANITARY SEWERS DATED APRIL 12, 1972, AND SHALL BE PROCEEDED ONLY IN THE PRESENCE OF THE COUNTY ENGINEER.
2. THE CONTRACTOR SHALL NOTIFY THE CONSTRUCTION DIVISION BY TELEPHONE, AT (213) 6-4747, EXT. 8151, AT LEAST TWENTY-FOUR HOURS BEFORE STARTING ANY WORK UNDER THIS CONTRACT.
3. HOUSE LATERALS TO BE CONSTRUCTED WITH INVERTS AT PROPERTY LINE 6 FEET BELOW CURB GRADE EXCEPT AS NOTED.
4. USE OF THE BRANCHES MAY BE USED FOR CONNECTIONS TO ALLEYS EXCEPT AS NOTED.
5. ALL STRUCTURES SHALL BE EITHER BRICK MANHOLES PER 8-3 OR PRECAST CONCRETE MANHOLES PER 8-36, EXCEPT AS NOTED.
6. PROVIDE STAKES ON THE PROPERTY LINE OR PROPERTY LINES PRODUCED AT RIGHT ANGLES TO THE SEWER LINE AT THE CENTER LINE OF EACH MANHOLE.
7. MANHOLE TOPS IN UNIMPROVED AREAS OF WAY TO BE SIX INCHES ABOVE FINISHED GRADE.
8. VITRIFIED CLAY PIPE JOINTS SHALL BE TYPE "B", "T", OR "O" PER STANDARD SPECIFICATIONS SECTION 300-2.
9. IF A POWER POLE IS WITHIN THREE FEET OF THE SEWER, THE SEWER SHALL BE ENCASED, PER 8-23, CASE II, TWO FEET ON EACH SIDE FROM THE POINT OF INTERFERENCE.
10. IF DURING THE COURSE OF CONSTRUCTION IT IS DETERMINED THAT THERE IS LESS THAN FOUR FEET OF COVER OVER THE TOP OF A MAIN LINE OR HOUSE LATERAL V.C.P. SEWER WHICH IS NOT INDICATED ON THE PLANS, THE PIPE SHALL BE ENCASED PER 8-23, CASE II UNLESS OTHERWISE APPROVED BY THE COUNTY ENGINEER.
11. ALL JOINTS BETWEEN CAST IRON PIPE AND VITRIFIED CLAY PIPE SHALL BE MADE WITH A RUBBER SLEEVE JOINT, TYPE "C" OR "F", WITH BURNING IF NECESSARY PER STANDARD SPECIFICATIONS SECTION 300-2.
12. SEWERS TO BE TESTED FOR LEAKAGE PER SECTION 306.3.2.2 OF THE STANDARD SPECIFICATIONS AND SPECIAL PROVISIONS.
13. RESURFACE ALL TRENCHES WITHIN PAVED AREAS TO MEET L.A. COUNTY ROAD DEPT. OR CALIFORNIA STATE HIGHWAY REQUIREMENTS IN ACCORDANCE WITH PERMITS.
14. FULL COMPLIANCE WITH SECTION 300-1.9.3 OF THE SPECIAL PROVISIONS WILL BE REQUIRED FOR BACKFILL IN STREETS. CERTIFICATION OF BACKFILL COMPACTION AND SAND EQUIVALENTS BY A QUALIFIED REGISTERED TESTING LABORATORY SHALL BE PROVIDED BY THE PERMITTEE PRIOR TO THE ISSUANCE OF A CERTIFICATE OF PARTIAL ACCEPTANCE.

COUNTY OF LOS ANGELES, CALIFORNIA
 HARVEY T. BRANDT, COUNTY ENGINEER JOHN D. PARKHURST, CHIEF ENGINEER

APPROVED: *H.T. Brandt* REGIONAL ENGINEER APPROVED: *J.D. Parkhurst* CHIEF ENGINEER

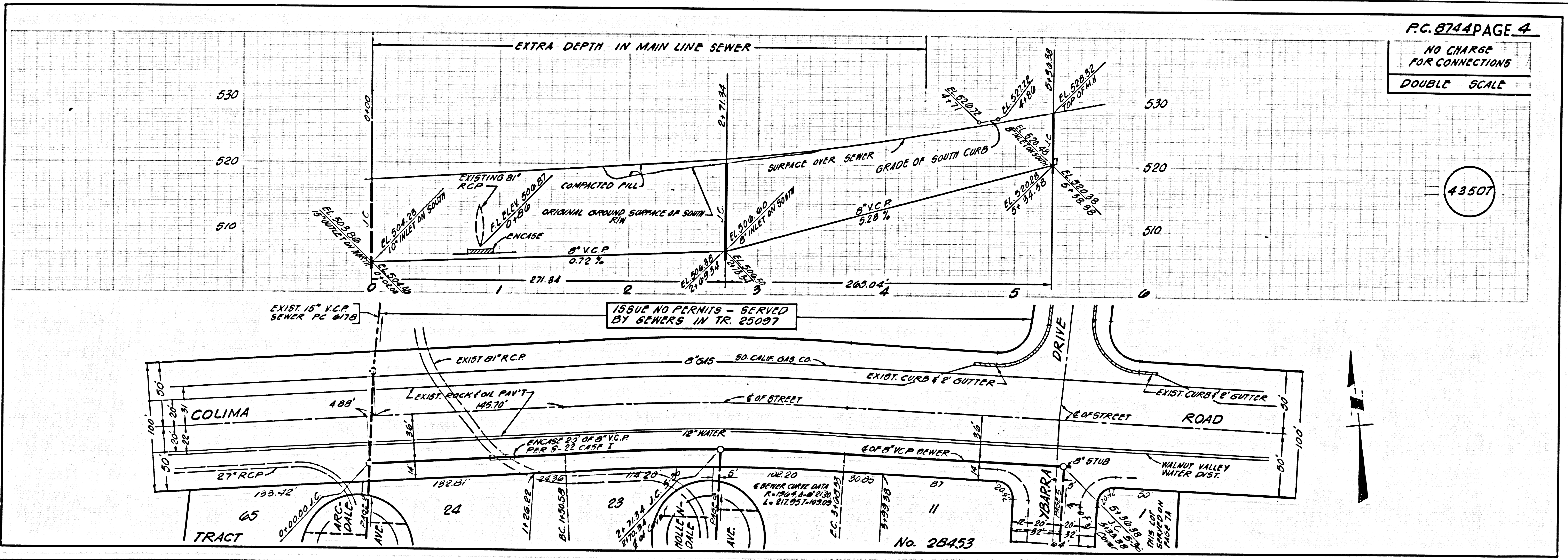
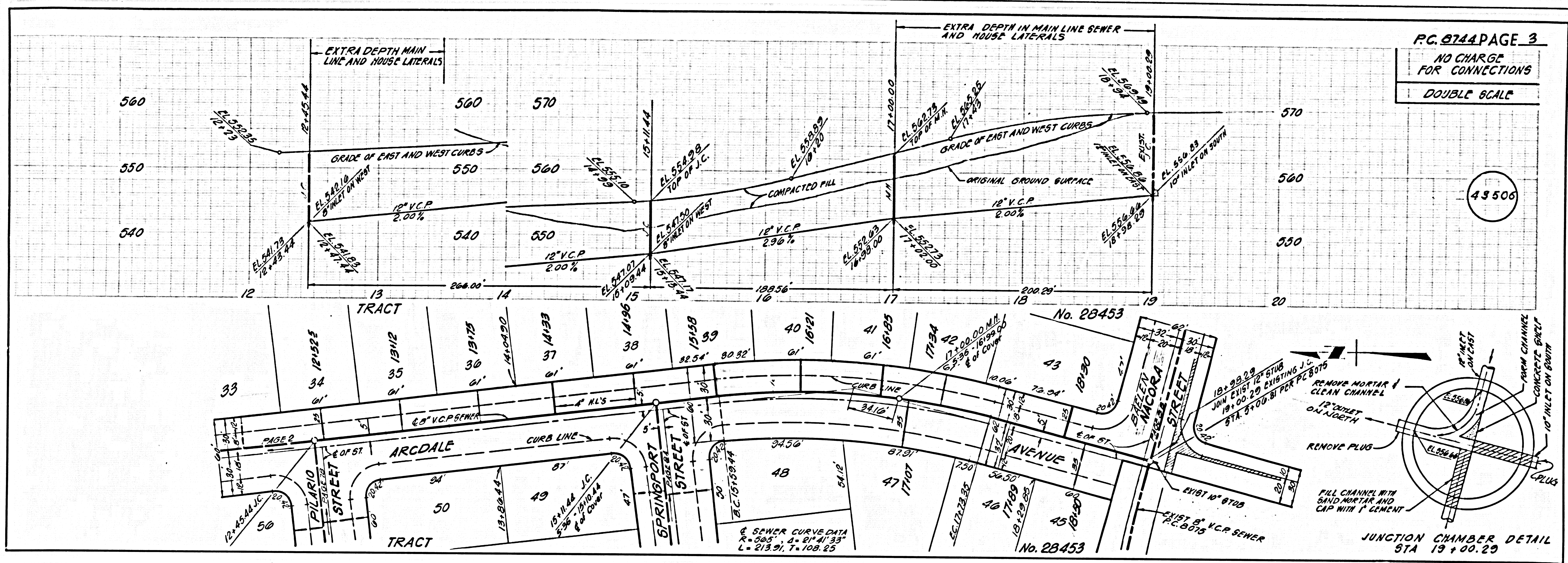
CHECKED: *Thomas E. Howard* DATE: JUN 19 1972
 REG. C.E. NO. 19156

LA PUENTE BLDG DIST # 20 I.N. 0250.02

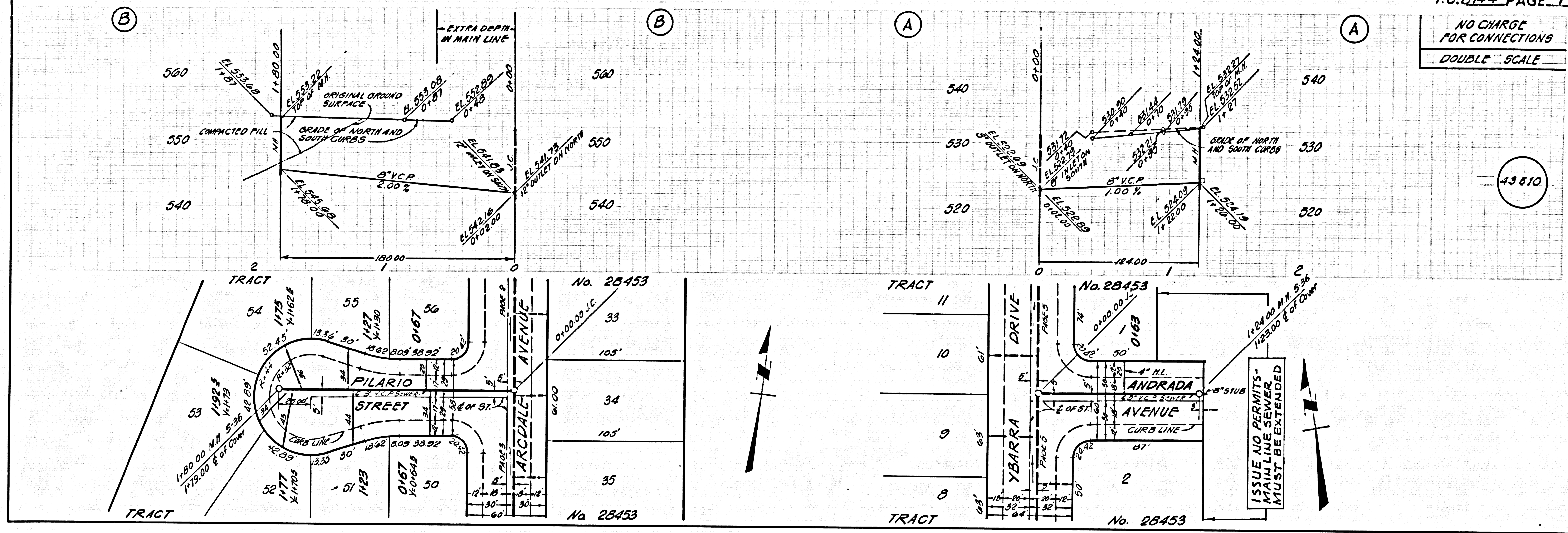


NO CHARGE
 FOR CONNECTIONS
 DOUBLE SCALE

43505



NO CHARGE FOR CONNECTIONS
DOUBLE SCALE



NO CHARGE FOR CONNECTIONS
DOUBLE SCALE

