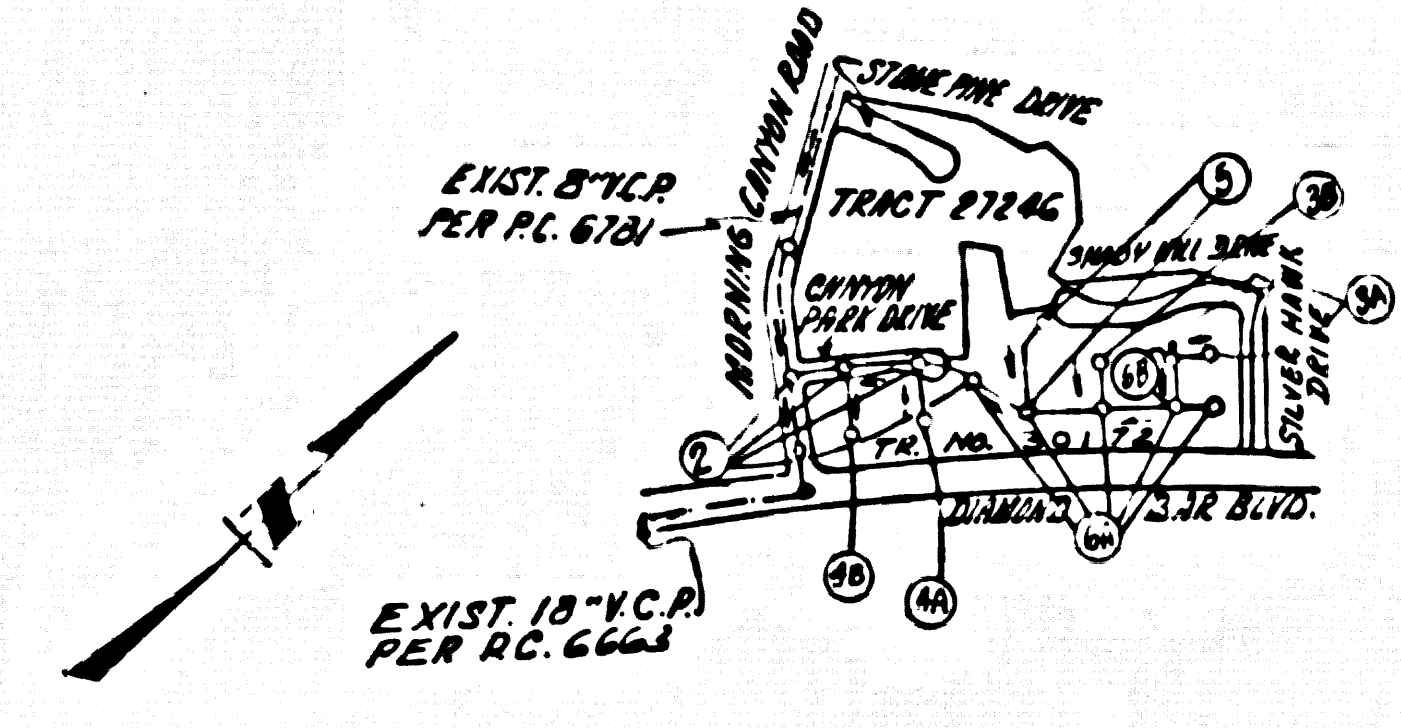


CONSTRUCTED IN  
**TRACT No. 30172**  
**PRIVATE CONTRACT NO. 8747**

W.S. 39 B/4  
 - 3 SHEETS, 6 PAGES  
 SCALE: VERT. 1" = 8'  
 HORIZ. 1" = 40' APRIL, 1972  
 PREPARED IN THE OFFICES OF  
**ERVIN ENGINEERING**  
 729 S. PARK VIEW ST. LOS ANGELES CALIF. 90057  
 BY: *Paul J. Ervin*  
 REG. C. E. No. 4832

B.M. 56 2100 ELEV. 772.274  
 R.D.B.M. TAG IN CONC. HDWL. NEAR INT.  
 DIAMOND BAR BLVD. & PARKWAY RD. 1/2 W. 1/4 N. 1/4  
 ELY CIL INT. QUAD. 19 55  
 DITTEBSEIN



**INDEX MAP**  
**TRACT No. 30172**  
**P.C. 8747**  
**SCALE: 1" = 600'**

No connections for the disposal of industrial wastes shall be made to sewers shown on these drawings without written permission from the Chief Engineer and General Manager of the County Sanitation Districts.

County Sanitation Districts shall be notified prior to the following so that required inspection can be made (Phone 237-1025 • 699-1101)

Accompaniment of the project.

**CONT. NOTE IS.**  
 1) ALL BRICKS AND BATH REPAIRS SHALL BE COMPLETED TO A MINIMUM OF 90% OF MIN. DENSITY PER A.S.T.M. STANDARD METHOD OF TEST C-29-57T AS PROVIDED. ACCEPTABLE CALIBRATION OF SUCH CONNECTION SHALL BE SUBMITTED TO THE CONDR. DIVISION.

**GENERAL NOTES:**

- ELEVATIONS ARE IN FEET ABOVE U.S.C. & G.S. SEA LEVEL DATUM OF 1929.
- NO REVISIONS SHALL BE MADE IN THESE PLANS WITHOUT THE APPROVAL OF THE COUNTY ENGINEER.
- NO REPRESENTATIVE OF THE COUNTY ENGINEER SHALL SURVEY OR LAY OUT ANY PORTION OF THE WORK.
- GRADES TO WHICH THIS IMPROVEMENT IS TO BE CONSTRUCTED ARE SHOWN ON PLANS AND PROFILES GRADE POINTS FOR TOP OF CURBS, CENTER LINE OF STREETS, OR CENTER LINE OF ALLEYS ARE SHOWN ON PROFILES AT ALL POINTS BETWEEN DESIGNATED POINTS THE GRADE SHALL BE ESTABLISHED SO AS TO CONFORM TO A STRAIGHT LINE DRAWN BETWEEN SAID DESIGNATED POINTS.
- THE PRIVATE ENGINEER SHALL FURNISH THE COUNTY ENGINEER WITH GRADE SHEETS AND STATIONING FOR ALL HOUSE LATERALS AND "T" OR "Y" BRANCHES AND SHALL PROVIDE STAKES FOR THEM AT THEIR PROFILE LOCATIONS WITH STATIONING PLAINLY MARKED. ALL HOUSE LATERALS SHALL BE CONSTRUCTED IN A STRAIGHT ALIGNMENT AT RIGHT ANGLES FROM THE MAIN LINE SEWER EXCEPT AS SHOWN ON THE PLANS. HOUSE LATERALS FROM CHIMNEYS SHALL NOT HAVE AN ANGLE OF LESS THAN 45° WITH THE MAIN LINE SEWER. ANY CHANGE IN ALIGNMENT SHALL BE REQUESTED IN WRITING BY THE PRIVATE ENGINEER.
- THE PRIVATE ENGINEER SHALL FURNISH THE HOUSE LATERAL DEPTH AT THE PROPERTY LINE BELOW THE TOP OF CURB ELEVATION FOR EACH HOUSE LATERAL ON THE GRADE SHEET.
- BEFORE WORK CAN BE STARTED, THE CONTRACTOR MUST OBTAIN A PERMIT TO EXCAVATE IN COUNTY STREETS FROM THE L.A. COUNTY ROAD DEPT., DISTRICT OFFICE NO. 1, AND PAY A FEE TO THE COUNTY ENGINEER, ROOM # 9, ENGINEER ADMIN. OFFICE, 450 S. WILSON BLVD., DEPT. OF PUBLIC WORKS, SAN DIMAS, CALIF. 91764. REGIONAL OFFICE, TO COVER THE COST OF CONSTRUCTION INSPECTION AND RECORD PLANS.
- IF WORK IS TO BE DONE IN A STATE HIGHWAY, A PERMIT MUST BE OBTAINED FROM THE STATE OF CALIFORNIA, DIVISION OF HIGHWAYS, 120 SOUTH BRIND STREET, LOS ANGELES, CALIFORNIA.
- APPROVAL OF THIS PLAN BY THE COUNTY OF LOS ANGELES DOES NOT CONSTITUTE A REPRESENTATION AS TO THE ACCURACY OF THE LOCATION OF OR THE EXISTENCE OR NON-EXISTENCE OF ANY UNDERGROUND UTILITY PIPE, OR STRUCTURE WITHIN THE LIMITS OF THIS PROJECT. THIS NOTE APPLIES TO ALL PAGES.
- REFER TO SECTION 7-10.4.1 OF THE STANDARD SPECIFICATIONS, REGARDING SAFETY SIGNS.

**CONSTRUCTION NOTES:**

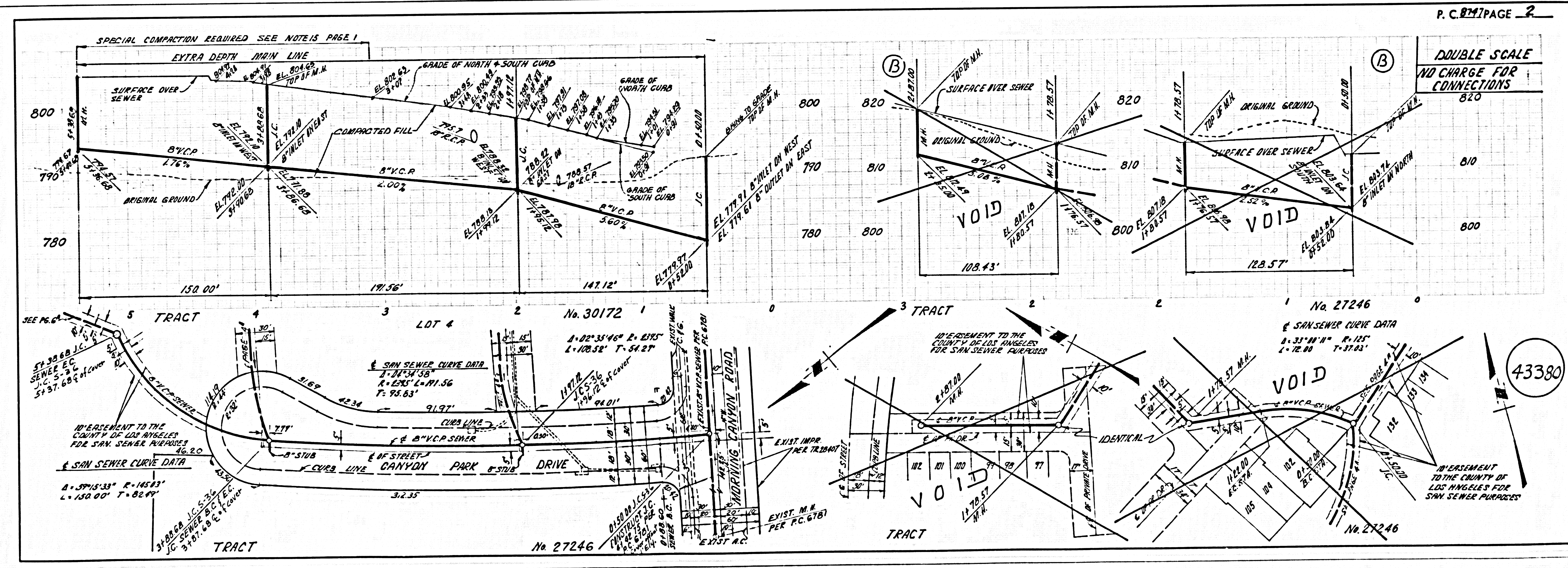
- WORK SHALL BE CONSTRUCTED ACCORDING TO THE STANDARD SPECIFICATIONS FOR PUBLIC WORKS CONSTRUCTION 1970 EDITION WITH 1972 SUPPLEMENTS AND COUNTY ENGINEER SPECIAL PROVISIONS FOR THE CONSTRUCTION OF SANITARY SEWERS DATED APRIL 10, 1972, AND SHALL BE PROSECUTED ONLY IN THE PRESENCE OF THE COUNTY ENGINEER.
- THE CONTRACTOR SHALL NOTIFY THE CONSTRUCTION DIVISION BY TELEPHONE, MADISON 9-67, EXT. 81531, AT LEAST TWENTY-FOUR HOURS BEFORE STARTING ANY WORK UNDER THIS CONTRACT.
- HOUSE LATERALS TO BE CONSTRUCTED WITH INVERTS AT PROPERTY LINE 4 FEET BELOW 80% OF DRIVEWAY GRADE EXCEPT AS NOTED. (C)
- WYE OR TE BRANCHES MAY BE USED FOR CONNECTIONS TO MAINLINE SEWERS EXCEPT AS NOTED.
- ALL STRUCTURES SHALL BE EITHER BRICK MANHOLES PER S-3 OR PRECAST CONCRETE MANHOLES PER S-26, EXCEPT AS NOTED.
- PROVIDE STAKES ON THE PROPERTY LINE OR PROPERTY LINES PRODUCED AT RIGHT ANGLES TO THE SEWER LINE AT THE CENTER LINE OF EACH MANHOLE.
- MANHOLE TOPS IN UNIMPROVED RIGHTS OF WAY TO BE SIX INCHES ABOVE FINISHED GRADE.
- VERIFIED CLAY PIPE JOINTS SHALL BE TYPE "B", "C", OR "D" PER STANDARD SPECIFICATION SECTION 308-2.
- IF A COVER POLE IS WITHIN THREE FEET OF THE SEWER, THE SEWER SHALL BE ENCASED, PER S-23, CASE 2, TWO FEET ON EACH SIDE FROM THE POINT OF INTERFERENCE.
- IF DURING THE COURSE OF CONSTRUCTION IT IS DETERMINED THAT THERE IS LESS THAN FOUR FEET OF COVER OVER THE TOP OF A MAIN LINE OR HOUSE LATERAL V.C.P. SEWER WHICH IS NOT INDICATED ON THE PLANS, THE PIPE SHALL BE ENCASED PER S-23, CASE 2 UNLESS OTHERWISE APPROVED BY THE COUNTY ENGINEER.
- ALL JOINTS BETWEEN CAST IRON PIPE AND VERIFIED CLAY PIPE SHALL BE MADE WITH A RUBBER SLEEVE JOINT, TYPE "C" OR "D", WITH BUSHING IF NECESSARY PER STANDARD SPECIFICATIONS, SECTION 308-2.
- SEWERS TO BE TESTED FOR LEAKAGE PER SECTION 308-2.2 OF THE STANDARD SPECIFICATIONS AND SPECIAL PROVISIONS.
- REINFORCE ALL TRENCHES WITHIN PAVED AREAS IN B.M. STREETS TO MEET L.A. COUNTY ROAD DEPT. OR CALIF. STATE HIGHWAY REQUIREMENTS IN ACCORDANCE WITH PERMITS.
- ALL CONTRACTORS WITHIN 200'-0" OF THE UNUSUAL PROVISIONS WILL BE REQUIRED FOR A RECORD OF TESTS CERTIFICATION OR BACKFILL CERTIFICATION AND EQUIVALENTS BY A QUALIFIED REGISTERED TESTING LABORATORY SHALL BE PROVIDED BY THE CONTRACTOR PRIOR TO THE ISSUANCE OF CERTIFICATE OF PROTECTION ACCEPTANCE.
- SPECIAL BRICKS IN DESIGNATED AREAS:  
 (1) BRICKS IN TRENCH AND MANHOLE SHALL BE REPORTED TO AS TO ACHIEVE THE NATURAL OR FINISHED GRADES AND SLOPES SHOWN ON THE GRADING PLAN APPROVED FOR THIS TRACT BY THE BUILDING AND SAFETY DIVISION.

THE FOLLOWING LATEST REVISED STANDARD PLANS ON FILE IN THE OFFICE OF THE COUNTY ENGINEER SHALL APPLY IN THE CONSTRUCTION OF THIS PROJECT:

LEGEND	SECTION
MINIMUM PUBLIC SAFETY REQUIREMENTS	S-3
BRICK MANHOLE	S-3
STANDARD MANHOLE STOP	S-37
WORKING FOR SEWER PIPE	S-29
CRACKING AND BACKFILL	S-26
WYE OR TE SUPPORT	S-26
ALLOWABLE TRENCH WIDTHS	S-26
LOADING MANHOLE PLANS AND COVER	S-26
NON-REINFORCED PRECAST CONCRETE MANHOLE	S-26

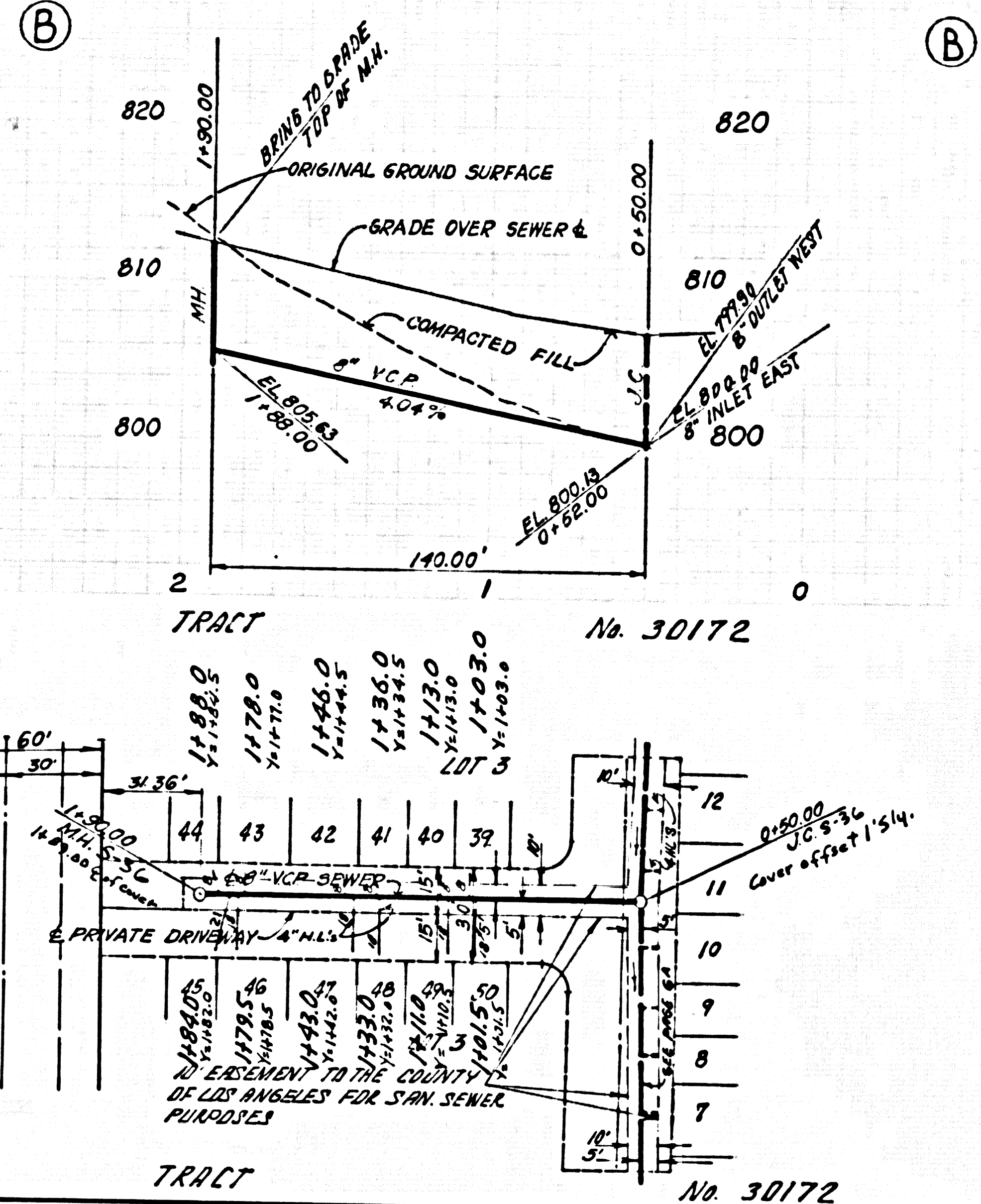
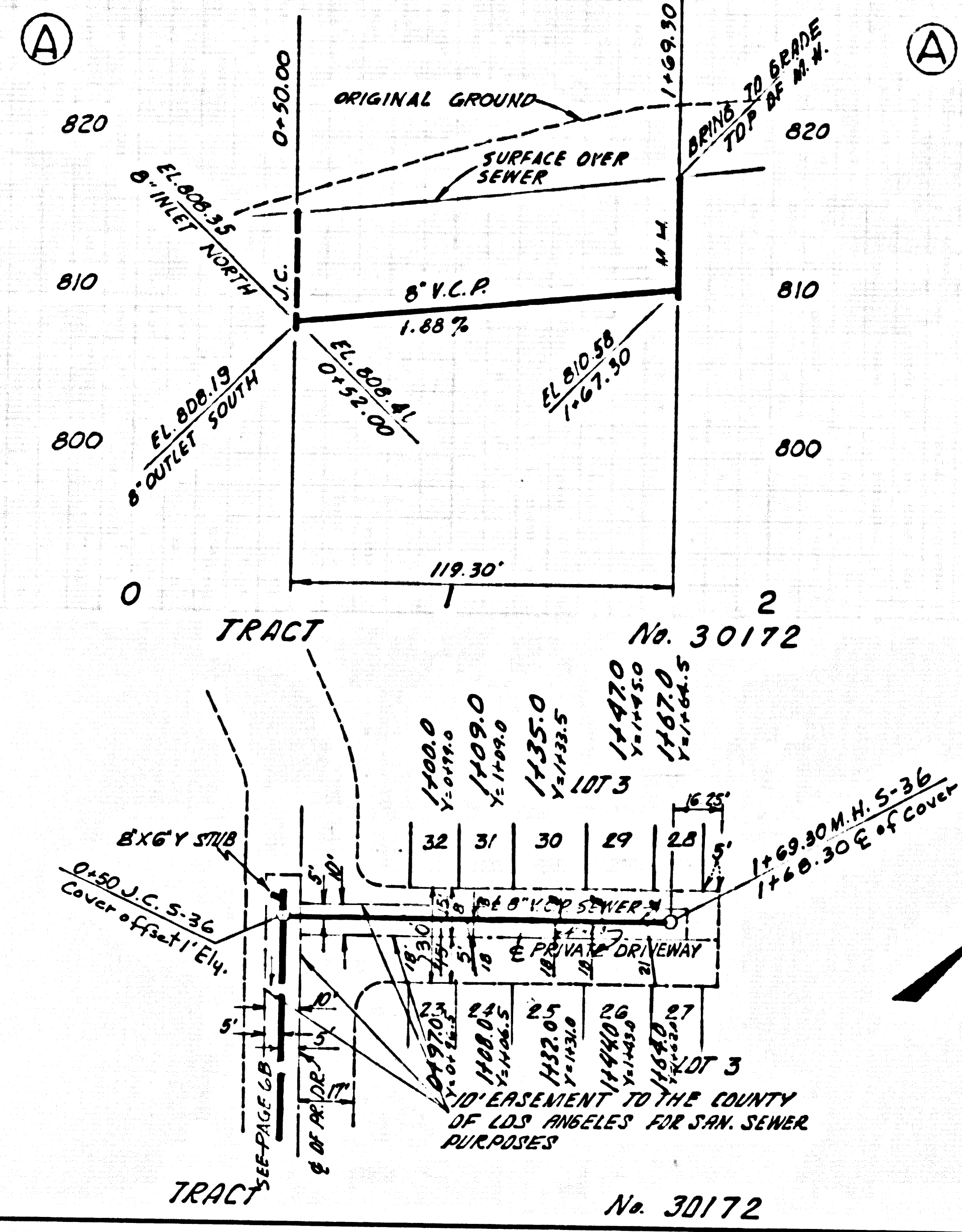
43379

COUNTY OF LOS ANGELES, CALIFORNIA  
 HARVEY T. BRUND, COUNTY ENGINEER  
 JOHN D. PARKURST, CHIEF ENGINEER  
 APPROVED: *B.T. ...* APPROVED: *J. ...*  
 CHECKED: *Thomas E. ...* DATE: MAY 7, 1972  
 M.G. C.E. NO. 19156  
 SAN DIMAS BLDG. DIST. 10 I.N. 0250 02



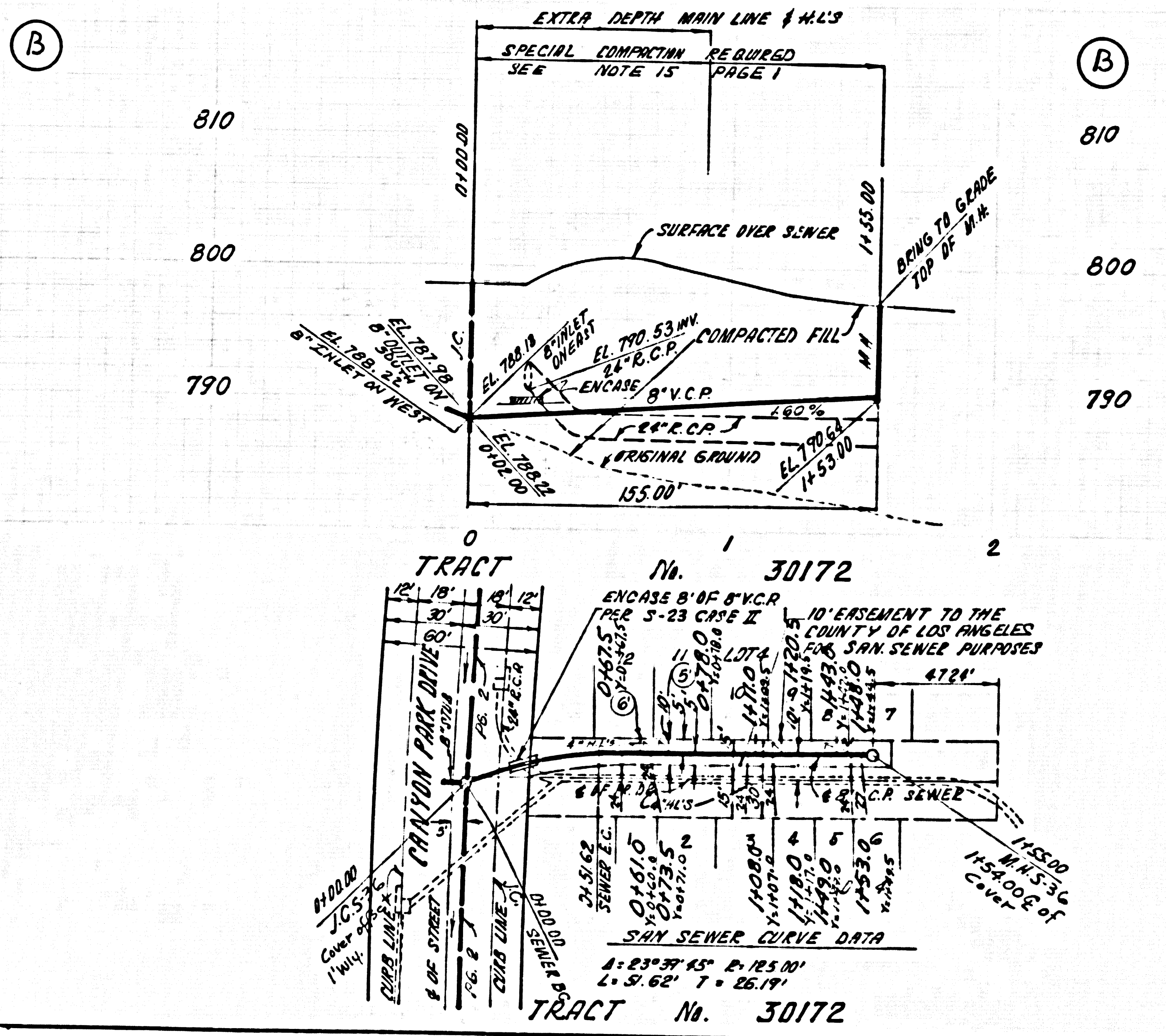
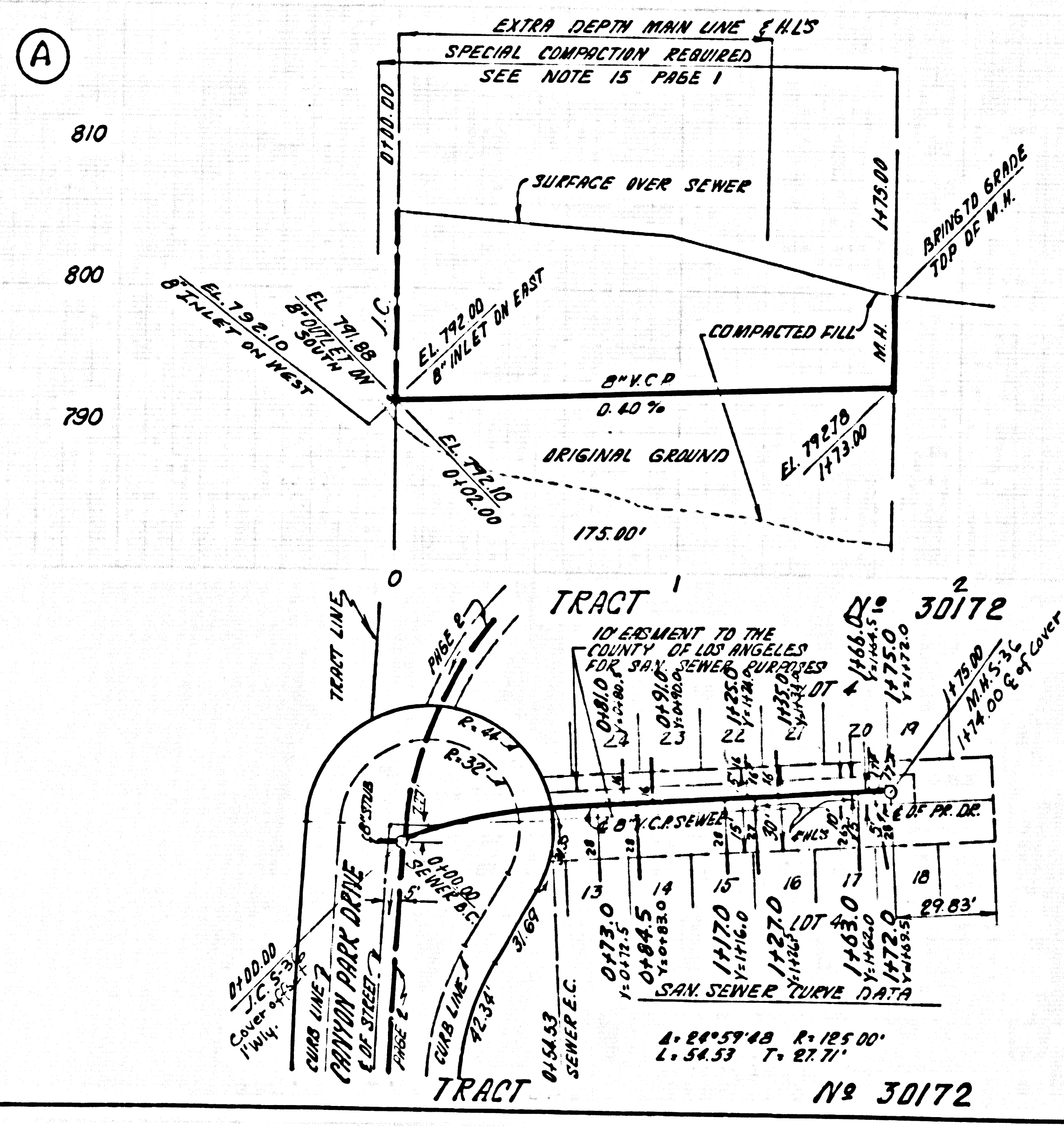


DOUBLE SCALE  
NO CHARGE FOR  
CONNECTION



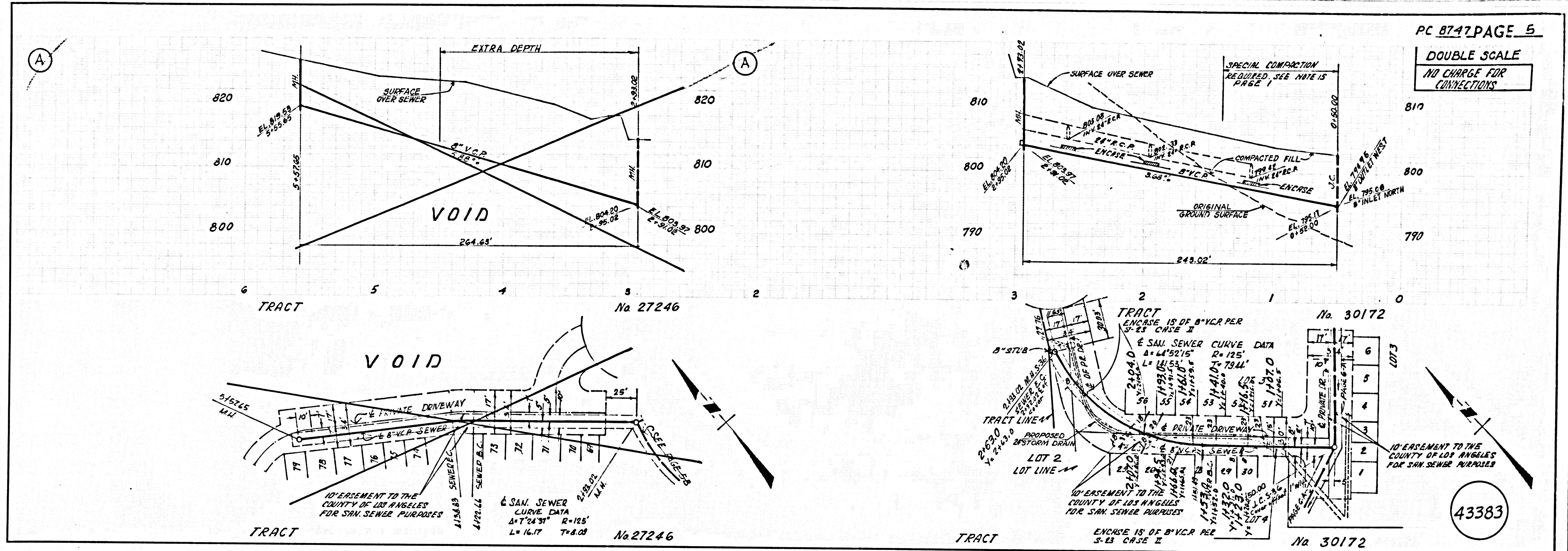
43381

DOUBLE SCALE  
NO CHARGE FOR  
CONNECTION



43382





1178 29  
 STICE IN TRACT

