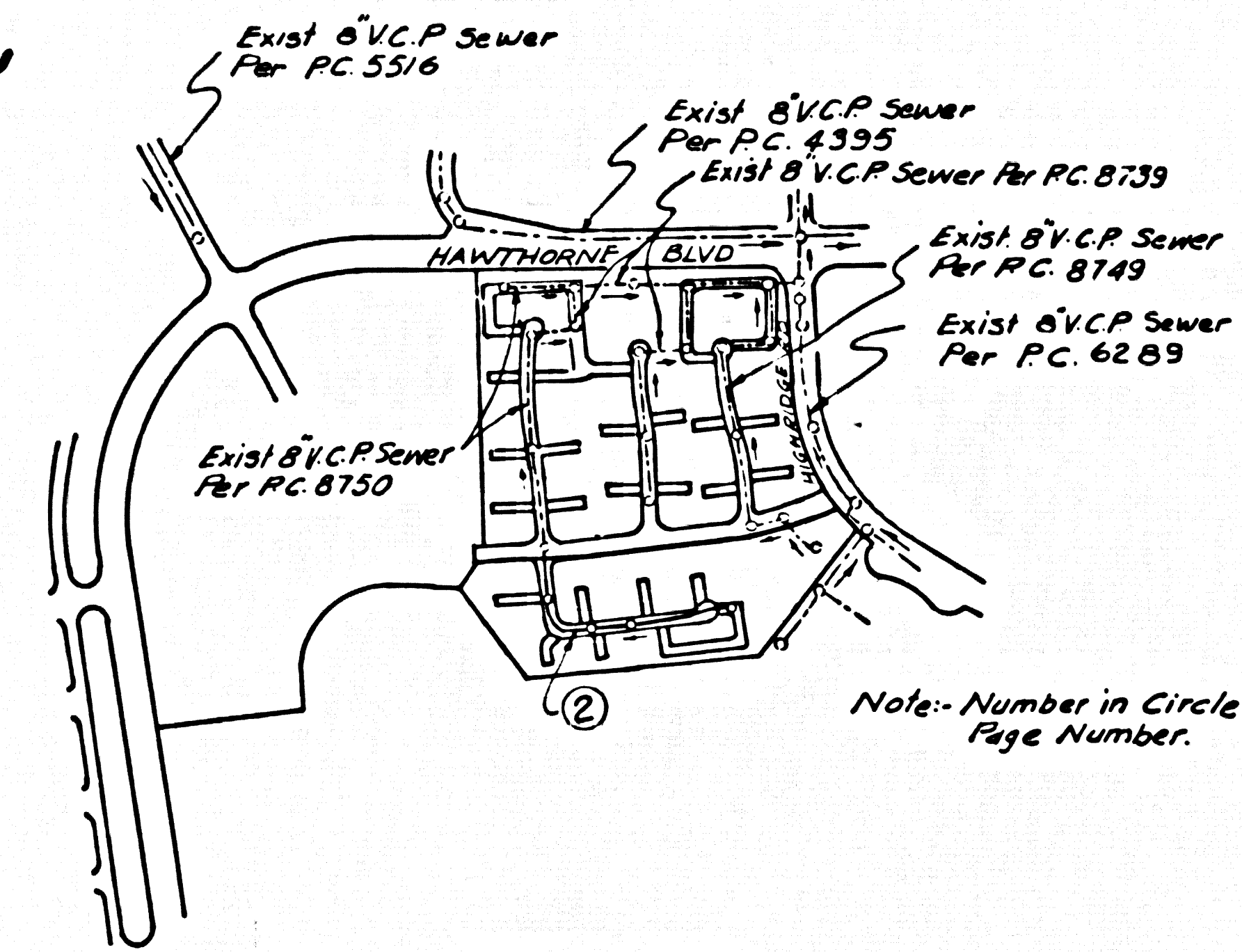


B.M. 4374 ELEV. 1033.31  
 L.S.P.K. 40 FT N.C.L. Hawthorne Blvd 780 FT  
 W.C.L. Graystone Road Front of Blue  
 Cove Sub Sta.  
 Palos Verdes QUAD. 19 70.



INDEX MAP  
 SCALE: 1"=600'  
 P.C. 8751  
 T.R. NO 29595

Full compliance with Section 306-1.9.3 of the special provisions will be required for back fill in Streets. Certification of back fill compaction and sand equivalents by a qualified Registered Testing Laboratory shall be provided by the Permittee prior to the issuance of a Certificate of partial Acceptance.

GENERAL NOTES:

- ELEVATIONS ARE IN FEET ABOVE U.S. & I.S. SEA LEVEL DATUM OF 1929.
- NO REVISIONS SHALL BE MADE IN THESE PLANS WITHOUT THE APPROVAL OF THE COUNTY ENGINEER.
- NO REPRESENTATIVE OF THE COUNTY ENGINEER WILL EXIST ON THE WORK.
- GRADES TO WHICH THIS IMPROVEMENT IS TO BE CONSTRUCTED ARE SHOWN ON PLANS AND PROFILES. GRADE POINTS FOR TOP OF CURBS, CENTER LINE OF STREETS, OR CENTER LINE OF ALLEYS ARE SHOWN BY CIRCLES ON PROFILES. AT ALL POINTS BETWEEN DESIGNATED POINTS THE GRADE SHALL BE ESTABLISHED SO AS TO CONFORM TO A STRAIGHT LINE DRAWN BETWEEN SAID DESIGNATED POINTS.
- THE PRIVATE ENGINEER SHALL FURNISH THE COUNTY ENGINEER WITH GRADE SHEETS AND STATIONING FOR ALL HOUSE LATERALS AND "T" OR "Y" BRANCHES AND SHALL PROVIDE STAKES FOR THEM AT THEIR PROPER LOCATIONS WITH STATIONING PLAINLY MARKED. ALL HOUSE LATERALS SHALL BE CONSTRUCTED IN A STRAIGHT ALIGNMENT AT RIGHT ANGLES FROM THE MAIN LINE SEWER EXCEPT AS SHOWN ON THE PLANS. HOUSE LATERALS FROM CHIMNEYS SHALL NOT HAVE AN ANGLE OF LESS THAN 45° WITH THE MAIN LINE SEWER. ANY CHANGE IN ALIGNMENT SHALL BE REQUESTED IN WRITING BY THE PRIVATE ENGINEER.
- THE PRIVATE ENGINEER SHALL FURNISH THE HOUSE LATERAL DEPTH AT THE PROPERTY LINE BELOW THE TOP OF CURB ELEVATION FOR EACH HOUSE LATERAL ON THE GRADE SHEET.
- BEFORE WORK CAN BE STARTED, THE CONTRACTOR MUST OBTAIN A PERMIT TO EXCAVATE IN COUNTY STREETS FROM THE L.A. COUNTY ROAD DEPT. DISTRICT OFFICE NO. \_\_\_\_\_ AND PAY A FEE TO THE COUNTY ENGINEER, ROOM #9, 3150 S. IMPERIAL AVENUE, GARDEN CITY, CALIF. 90131. THE PERMIT SHALL BE OBTAINED FROM THE DISTRICT OFFICE, TO COVER THE COST OF CONSTRUCTION INSPECTION AND RECORD PLANS.
- IF WORK IS TO BE DONE IN A STATE HIGHWAY, A PERMIT MUST BE OBTAINED FROM THE STATE OF CALIFORNIA, DIVISION OF HIGHWAY, 120 SOUTH BRIDGE STREET, LOS ANGELES, CALIFORNIA.
- APPROVAL OF THIS PLAN BY THE COUNTY OF LOS ANGELES DOES NOT CONSTITUTE A REPRESENTATION AS TO THE ACCURACY OF THE LOCATION OF OR THE EXISTENCE OR NON-EXISTENCE OF ANY UNDERGROUND UTILITY PIPE, OR STRUCTURE WITHIN THE LIMITS OF THE PROJECT. THE NOTE APPLIES TO ALL SAGES.
- REFER TO SECTION 7-18.4.1 OF THE STANDARD SPECIFICATIONS, REGARDING UTILITY CROSSINGS.

County Sanitation Districts shall be notified prior to the following so that required inspection can be made (Phone 337-1025 x 639-1011)

No connections for the disposal of industrial wastes shall be made to sewers shown on these drawings without written permission from the Chief Engineer and General Manager of the County Sanitation Districts.

CONSTRUCTION NOTES:

- WORK SHALL BE CONSTRUCTED ACCORDING TO THE STANDARD SPECIFICATIONS FOR PUBLIC WORKS CONSTRUCTION (1976 EDITION WITH 7-72 SUPPLEMENTS) AND COUNTY ENGINEER SPECIAL PROVISIONS FOR THE CONSTRUCTION OF SANITARY SEWERS DATED 4/20/72, 1/31/72, AND SHALL BE PROSECUTED ONLY IN THE PRESENCE OF THE COUNTY ENGINEER.
- THE CONTRACTOR SHALL NOTIFY THE CONSTRUCTION DIVISION BY TELEPHONE, W/1500 9-4-72, EXT. 81331, AT LEAST TWENTY-FOUR HOURS BEFORE STARTING ANY WORK UNDER THIS CONTRACT.
- HOUSE LATERALS TO BE CONSTRUCTED WITH INVERTS AT PROPERTY LINE & FEET BELOW CURB GRADE EXCEPT AS NOTED.
- WYE OR THE BRANCHES MAY BE USED FOR CONNECTIONS TO MAINLINE SEWERS EXCEPT AS NOTED.
- ALL STRUCTURES SHALL BE BUILT BRICK MANHOLES PER 2-2 OF PERCAST CONCRETE MANHOLES PER 2-3A, EXCEPT AS NOTED.
- PROVIDE STAKES ON THE PROPERTY LINE OR PROPERTY LINES PRODUCED AT RIGHT ANGLES TO THE SEWER LINE AT THE CENTER LINE OF EACH MANHOLE.
- MANHOLE TOPS IN UNIMPROVED RIGHTS OF WAY TO BE SIX INCHES ABOVE FINISHED GRADE.
- VERTICAL CURVE JOINTS SHALL BE TYPE "B", "P", OR "U" PER STANDARD SPECIFICATIONS SECTION 306.2.
- IF A POWER POLE IS WITHIN THREE FEET OF THE SEWER, THE SEWER SHALL BE ENCASED, PER 2-33, CASE 2, TWO FEET ON EACH SIDE FROM THE POINT OF INTERFERENCE.
- IF DURING THE COURSE OF CONSTRUCTION IT IS DETERMINED THAT THERE IS LESS THAN FOUR FEET OF COVER OVER THE TOP OF A MAIN LINE OR HOUSE LATERAL V.C.P. SEWER WHICH IS NOT INDICATED ON THE PLANS, THE PIPE SHALL BE ENCASED PER 2-33, CASE 2, UNLESS OTHERWISE APPROVED BY THE COUNTY ENGINEER.
- ALL JOINTS BETWEEN CAST IRON PIPE AND VITRIFIED CLAY PIPE SHALL BE MADE WITH A RUBBER SLEEVE JOINT, TYPE "C" OR "B", WITH GASKING IF NECESSARY PER STANDARD SPECIFICATIONS, SECTION 306.2.
- SEWERS TO BE TESTED FOR LEAKAGE PER SECTION 306.3.3 OF THE STANDARD SPECIFICATIONS AND SPECIAL PROVISIONS.
- RESURFACE ALL TRENCHES WITHIN PAVED AREAS TO MEET L.A. COUNTY ROAD DEPT. OR CALIFORNIA STATE HIGHWAY REQUIREMENTS IN ACCORDANCE WITH PERMITS.
- Issue No House Connection Permits Until P.C. 8750 & P.C. 8739 are Completed.

REVISION NO 1 DATE 4-24-72  
 On Page 2. Added "Y" for Guard House. Sh. 3/1/72  
 Approved: *K.P. Murphy*  
 Office of County Engineer. 15-944

TRACT NO 29595  
 PRIVATE CONTRACT NO. 8751

W.S. 27  
 SHEET 2 PAGES  
 SCALE: VERT. 1"=4' HORIZ. 1"=40'  
 APRIL, 1972  
 PREPARED IN THE OFFICES OF  
 SIKAND ENGINEERING ASSOCIATES  
 15205 Burbank Blvd. VAN NUYS, CALIF. 91401.  
 REG. C. E. No. 9712

43585

THE FOLLOWING LATEST REVISED STANDARD PLANS ON FILE IN THE OFFICE OF THE COUNTY ENGINEER SHALL APPLY IN THE CONSTRUCTION OF THIS PROJECT.

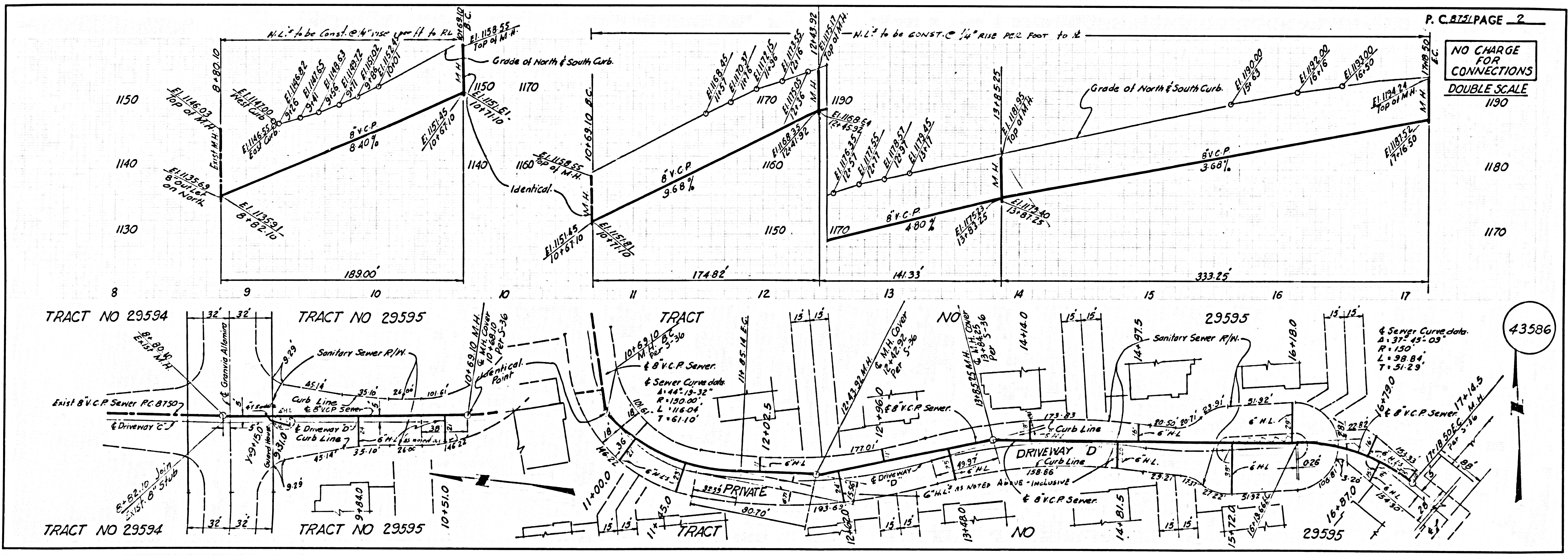
LOGS	81
MINIMUM PUBLIC SAFETY REQUIREMENTS	82
RACE MANHOLE	83
STANDARD MANHOLE STEP	87
BEDDING FOR SEWER PIPE	87
CRADLING AND ENCASEMENT	88
WYE OF THE SEWER	88
ALLOWABLE TRENCH WIDTHS	89
LOCKING MANHOLE FRAME AND COVER	89
NON-REINFORCED PERCAST CONCRETE MANHOLE	89

COUNTY OF LOS ANGELES, CALIFORNIA  
 HARVEY T. BRANDT, COUNTY ENGINEER JOHN D. PARKHURST, CHIEF ENGINEER

APPROVED *Robert W. Wilson* 7-4-72 REGIONAL ENGINEER APPROVED *W. J. Williams* 7-4-72 OFFICE ENGINEER

CHECKED *Marion S. Ford* 7-4-72  
 REG. C.E. NO. 16227

LOMITA BLDG. DIST. 12 I.N. 0250-02



NO CHARGE FOR CONNECTIONS  
 DOUBLE SCALE  
 1190

43586