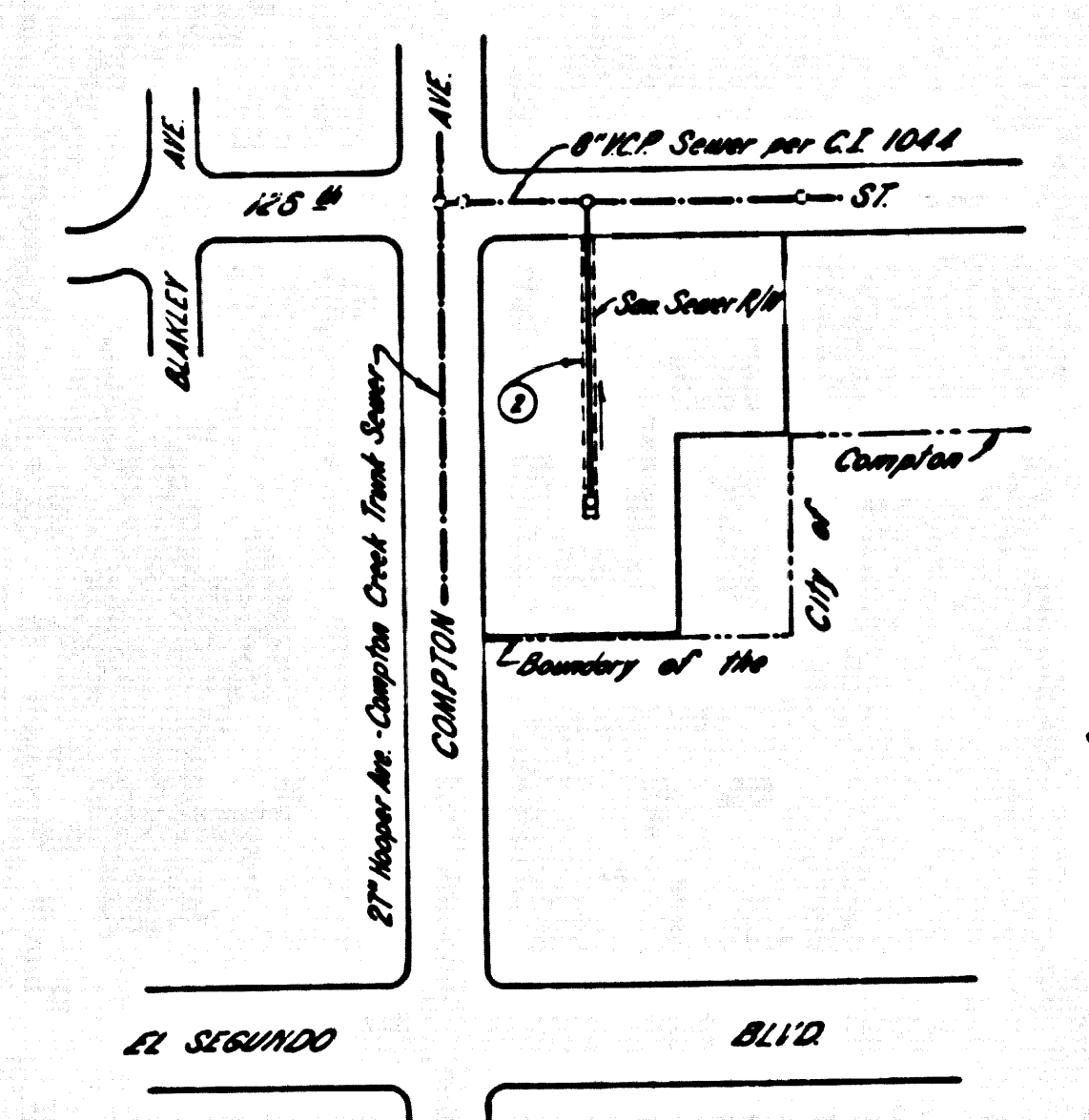


B.M. BY 7956 ELEV. 83.184  
 R.B.M. Top 3' west B.C.R. 14' North of  
 62' West of E. Intersection El Segundo  
 Blvd. & Compton Ave.  
 WATTS QUAD. 1972.



INDEX MAP  
 1" = 200'  
 P.C. 8755

**UNDERGROUND STRUCTURES**  
 ALL UNDERGROUND UTILITIES OR STRUCTURES REPORTED BY THE OWNER OR OTHERS  
 AND THOSE SHOWN ON THE RECORDS EXAMINED ARE INDICATED WITH THEIR  
 APPROXIMATE LOCATION AND DEPTH. THE OWNER BY ACCEPTING THESE PLANS  
 ON PROCEEDING WITH IMPROVEMENTS HEREBY AGREES TO ASSUME  
 LIABILITY AND TO HOLD THE UNDERSIGNED HARMLESS FOR ANY DAMAGES  
 RESULTING FROM THE EXISTENCE OF THE UNDERGROUND UTILITIES OR  
 STRUCTURES NOT REPORTED TO THE UNDERSIGNED, AND INDICATED ON THE  
 PUBLIC RECORDS EXAMINED, LOCATED AT VARIANCE WITH THAT REPORTED  
 OR SHOWN ON RECORDS EXAMINED.

THE CONTRACTOR IS REQUIRED TO TAKE ONE PRECAUTIONARY MEASURE TO  
 PROTECT THE UTILITIES OR STRUCTURES SHOWN AND ANY OTHER UTILITIES  
 OR STRUCTURES FOUND AT THE SITE. IT SHALL BE THE CONTRACTOR'S  
 RESPONSIBILITY TO NOTIFY THE OWNER OF THE UTILITIES OR STRUCTURES  
 CONCERNED BEFORE STARTING WORK.

*Barry S. Fischer*  
 BARRY S. FISCHER ACE # 13068

THE FOLLOWING LATEST REVISED STANDARD PLANS ON FILE IN THE OFFICE OF THE  
 COUNTY ENGINEER SHALL APPLY IN THE CONSTRUCTION OF THIS PROJECT:

LEGEND	5-1
MINIMUM PUBLIC SAFETY REQUIREMENTS	5-2
DECK MANHOLE	5-3
STANDARD MANHOLE TYPE	5-4
ACCESS FOR STEEP PIPE	5-5
CHANGING AND SACKING	5-6
PIPE OF ICE SUPPORT	5-7
UNCOMMON TRENCH WIDTHS	5-8
LOCATING MANHOLE FRAME AND COVER	5-9
NON-REINFORCED PRECAST CONCRETE MANHOLE	5-10

FULL COMPLIANCE WITH SECTION 904-1.8 OF THE SPECIAL PROVISIONS WILL BE  
 REQUIRED FOR BACKFILL IN STREETS. CERTIFICATION OF BACKFILL  
 CONSTRUCTION AND SING EQUIVALENT BY A QUALIFIED, REGISTERED TESTING  
 LABORATORY SHALL BE PROVIDED BY THE CONTRACTOR PRIOR TO THE ISSUANCE  
 OF A CERTIFICATE OF PARTIAL ACCEPTANCE.

REVISION #1  
 REVISED GRADE OF 8" V.C.P.  
 SIZES & ILLUMINATED EXTRA V  
 APPROVED BY: *Barry S. Fischer*  
 ACE # 13068

FIRESTONE BLDG. DIST. NO. 1

- NOTES:
1. PROVIDE STAKES ON THE PROPERTY LINE OR PROPERTY LINES PROVIDED AT RIGHT ANGLES TO THE SEWER LINE AT THE CENTER LINE OF EACH MANHOLE.
  2. THE CONTRACTOR SHALL BE RESPONSIBLE FOR OBTAINING ALL NECESSARY PERMITS AND FOR THE PROTECTION OF ALL UTILITIES AND STRUCTURES ON THE PROPERTY LINE OR PROPERTY LINES PROVIDED AT RIGHT ANGLES TO THE SEWER LINE AT THE CENTER LINE OF EACH MANHOLE.
  3. THE CONTRACTOR SHALL BE RESPONSIBLE FOR THE PROTECTION OF ALL UTILITIES AND STRUCTURES ON THE PROPERTY LINE OR PROPERTY LINES PROVIDED AT RIGHT ANGLES TO THE SEWER LINE AT THE CENTER LINE OF EACH MANHOLE.
  4. THE CONTRACTOR SHALL BE RESPONSIBLE FOR THE PROTECTION OF ALL UTILITIES AND STRUCTURES ON THE PROPERTY LINE OR PROPERTY LINES PROVIDED AT RIGHT ANGLES TO THE SEWER LINE AT THE CENTER LINE OF EACH MANHOLE.
  5. THE CONTRACTOR SHALL BE RESPONSIBLE FOR THE PROTECTION OF ALL UTILITIES AND STRUCTURES ON THE PROPERTY LINE OR PROPERTY LINES PROVIDED AT RIGHT ANGLES TO THE SEWER LINE AT THE CENTER LINE OF EACH MANHOLE.
  6. THE CONTRACTOR SHALL BE RESPONSIBLE FOR THE PROTECTION OF ALL UTILITIES AND STRUCTURES ON THE PROPERTY LINE OR PROPERTY LINES PROVIDED AT RIGHT ANGLES TO THE SEWER LINE AT THE CENTER LINE OF EACH MANHOLE.
  7. THE CONTRACTOR SHALL BE RESPONSIBLE FOR THE PROTECTION OF ALL UTILITIES AND STRUCTURES ON THE PROPERTY LINE OR PROPERTY LINES PROVIDED AT RIGHT ANGLES TO THE SEWER LINE AT THE CENTER LINE OF EACH MANHOLE.
  8. THE CONTRACTOR SHALL BE RESPONSIBLE FOR THE PROTECTION OF ALL UTILITIES AND STRUCTURES ON THE PROPERTY LINE OR PROPERTY LINES PROVIDED AT RIGHT ANGLES TO THE SEWER LINE AT THE CENTER LINE OF EACH MANHOLE.
  9. THE CONTRACTOR SHALL BE RESPONSIBLE FOR THE PROTECTION OF ALL UTILITIES AND STRUCTURES ON THE PROPERTY LINE OR PROPERTY LINES PROVIDED AT RIGHT ANGLES TO THE SEWER LINE AT THE CENTER LINE OF EACH MANHOLE.
  10. THE CONTRACTOR SHALL BE RESPONSIBLE FOR THE PROTECTION OF ALL UTILITIES AND STRUCTURES ON THE PROPERTY LINE OR PROPERTY LINES PROVIDED AT RIGHT ANGLES TO THE SEWER LINE AT THE CENTER LINE OF EACH MANHOLE.
  11. THE CONTRACTOR SHALL BE RESPONSIBLE FOR THE PROTECTION OF ALL UTILITIES AND STRUCTURES ON THE PROPERTY LINE OR PROPERTY LINES PROVIDED AT RIGHT ANGLES TO THE SEWER LINE AT THE CENTER LINE OF EACH MANHOLE.
  12. THE CONTRACTOR SHALL BE RESPONSIBLE FOR THE PROTECTION OF ALL UTILITIES AND STRUCTURES ON THE PROPERTY LINE OR PROPERTY LINES PROVIDED AT RIGHT ANGLES TO THE SEWER LINE AT THE CENTER LINE OF EACH MANHOLE.
  13. THE CONTRACTOR SHALL BE RESPONSIBLE FOR THE PROTECTION OF ALL UTILITIES AND STRUCTURES ON THE PROPERTY LINE OR PROPERTY LINES PROVIDED AT RIGHT ANGLES TO THE SEWER LINE AT THE CENTER LINE OF EACH MANHOLE.
  14. THE CONTRACTOR SHALL BE RESPONSIBLE FOR THE PROTECTION OF ALL UTILITIES AND STRUCTURES ON THE PROPERTY LINE OR PROPERTY LINES PROVIDED AT RIGHT ANGLES TO THE SEWER LINE AT THE CENTER LINE OF EACH MANHOLE.
  15. THE CONTRACTOR SHALL BE RESPONSIBLE FOR THE PROTECTION OF ALL UTILITIES AND STRUCTURES ON THE PROPERTY LINE OR PROPERTY LINES PROVIDED AT RIGHT ANGLES TO THE SEWER LINE AT THE CENTER LINE OF EACH MANHOLE.
  16. THE CONTRACTOR SHALL BE RESPONSIBLE FOR THE PROTECTION OF ALL UTILITIES AND STRUCTURES ON THE PROPERTY LINE OR PROPERTY LINES PROVIDED AT RIGHT ANGLES TO THE SEWER LINE AT THE CENTER LINE OF EACH MANHOLE.
  17. THE CONTRACTOR SHALL BE RESPONSIBLE FOR THE PROTECTION OF ALL UTILITIES AND STRUCTURES ON THE PROPERTY LINE OR PROPERTY LINES PROVIDED AT RIGHT ANGLES TO THE SEWER LINE AT THE CENTER LINE OF EACH MANHOLE.
  18. THE CONTRACTOR SHALL BE RESPONSIBLE FOR THE PROTECTION OF ALL UTILITIES AND STRUCTURES ON THE PROPERTY LINE OR PROPERTY LINES PROVIDED AT RIGHT ANGLES TO THE SEWER LINE AT THE CENTER LINE OF EACH MANHOLE.
  19. THE CONTRACTOR SHALL BE RESPONSIBLE FOR THE PROTECTION OF ALL UTILITIES AND STRUCTURES ON THE PROPERTY LINE OR PROPERTY LINES PROVIDED AT RIGHT ANGLES TO THE SEWER LINE AT THE CENTER LINE OF EACH MANHOLE.
  20. THE CONTRACTOR SHALL BE RESPONSIBLE FOR THE PROTECTION OF ALL UTILITIES AND STRUCTURES ON THE PROPERTY LINE OR PROPERTY LINES PROVIDED AT RIGHT ANGLES TO THE SEWER LINE AT THE CENTER LINE OF EACH MANHOLE.

County Sanitation Districts shall be notified prior to the following so that required inspection can be made (Phone 227-1222 or 858-1414)

Collect Charges as Indicated

NO CONNECTIONS FOR THE DISPOSAL OF INDUSTRIAL WASTES SHALL BE MADE TO SEWERS SHOWN ON THESE DRAWINGS WITHOUT WRITTEN PERMISSION FROM THE CHIEF ENGINEER AND GENERAL MANAGER OF THE COUNTY SANITATION DISTRICTS.

NOTICE TO CONTRACTOR  
 The existence and location of any underground utility pipes or structures shown on these plans are shown by a survey of the available records to the best of the knowledge there are no errors. The contractor is required to take due precautionary measures to protect the utility lines shown and any other lines not shown on these plans.  
*Barry S. Fischer*  
 ACE # 13068

PROFILE ALIGNMENT AND GRADE OF  
 SANITARY SEWERS PAGE 1  
 TO BE CONSTRUCTED IN

TRACT No. 29782  
 PRIVATE CONTRACT NO. 8755

W.S. 20  
 1 SHEET 2 PAGES  
 SCALE: HORIZ. 1" = 40' VERT. 1" = 4'  
 PREPARED IN THE OFFICES OF  
 FISCHER ENGINEERING CO.  
 16200 VENTURA BLVD. ENCIENATE, CALIF. 94746  
 BY: *Barry S. Fischer*  
 REG. C.E. NO. 13068

FOR LEGEND SEE PLAN NO. 1

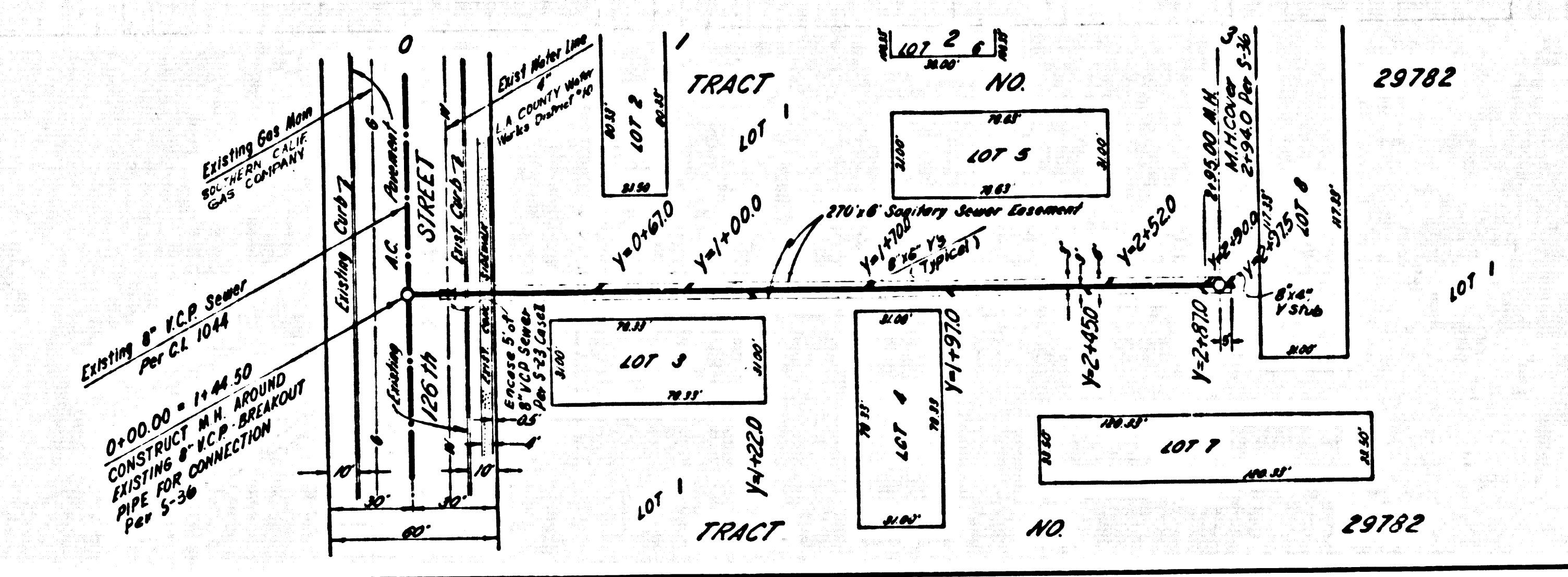
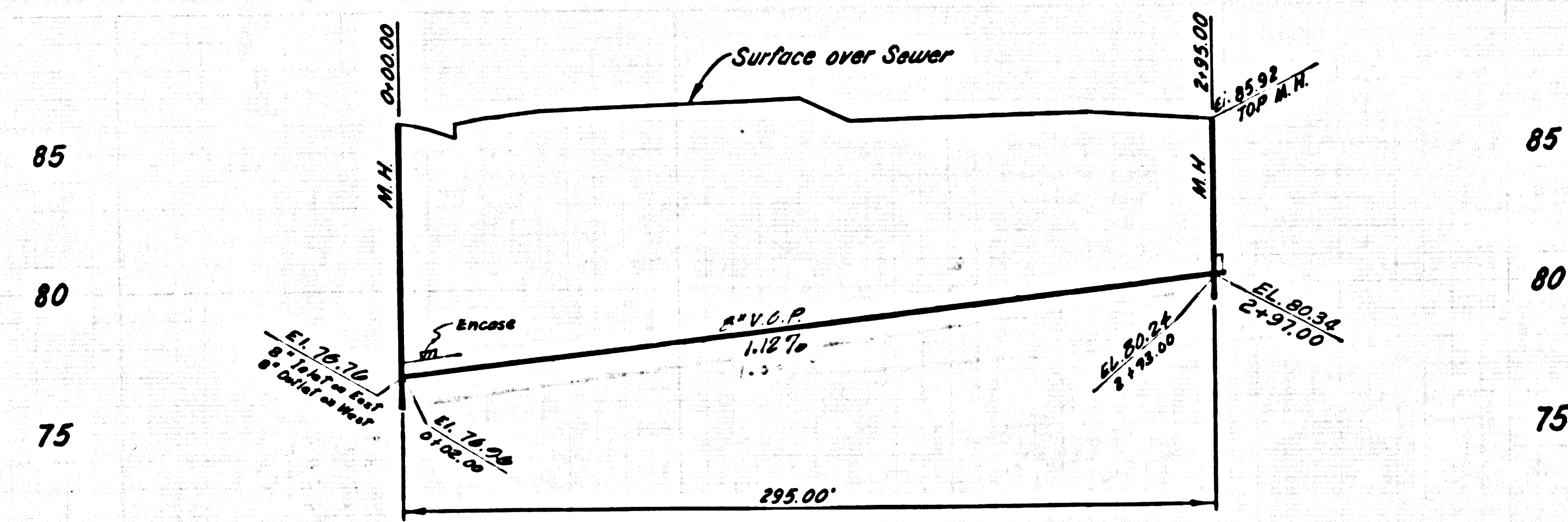
NOTES:  
 GRADES TO WHICH THIS IMPROVEMENT IS TO BE CONSTRUCTED ARE SHOWN ON PLANS AND PROFILE GRADE POINTS FOR TOP OF CURB, CENTER LINE OF STREETS, OR CENTER LINE OF ALLEYS ARE SHOWN BY CIRCLES ON PROFILES. AT ALL POINTS BETWEEN DESIGNATED POINTS THE GRADE SHALL BE ESTABLISHED SO AS TO CONFORM TO A STRAIGHT LINE BETWEEN SAID DESIGNATED POINTS.  
 ELEVATIONS ARE IN FEET ABOVE U.S.C. & G.S. SEA LEVEL DATUM OF 1929.  
 ANY CHANGES IN THE PLANS OR PROFILES SHALL BE MADE BY THE CONTRACTOR AT HIS OWNERS RISK AND WITHOUT THE LIABILITY OF THE COUNTY ENGINEER.  
 THESE PLANS AND PROFILES ARE NOT TO BE USED FOR ANY OTHER PROJECTS WITHOUT THE WRITTEN PERMISSION OF THE COUNTY ENGINEER.  
 THESE PLANS AND PROFILES ARE NOT TO BE USED FOR ANY OTHER PROJECTS WITHOUT THE WRITTEN PERMISSION OF THE COUNTY ENGINEER.  
 THESE PLANS AND PROFILES ARE NOT TO BE USED FOR ANY OTHER PROJECTS WITHOUT THE WRITTEN PERMISSION OF THE COUNTY ENGINEER.  
 THESE PLANS AND PROFILES ARE NOT TO BE USED FOR ANY OTHER PROJECTS WITHOUT THE WRITTEN PERMISSION OF THE COUNTY ENGINEER.  
 THESE PLANS AND PROFILES ARE NOT TO BE USED FOR ANY OTHER PROJECTS WITHOUT THE WRITTEN PERMISSION OF THE COUNTY ENGINEER.

COUNTY OF LOS ANGELES, CALIFORNIA  
 HARRY E. BRANT COUNTY ENGINEER  
 J. D. PARKHURST, CHIEF ENGINEER  
 CO. SAN DIST. NO. 1

APPROVED BY: *Barry S. Fischer* 6-21-72  
 REGIONAL ENGINEER  
 CHECKED BY: *Barry S. Fischer* 6/21/72  
 REG. C.E. NO. 13068

I.N. 0250.02

NO CHARGE FOR CONNECTIONS



NOTE:  
 SEE ONLY 8" V.C.P. SIZES

SCALE: 1" = 40'

44555