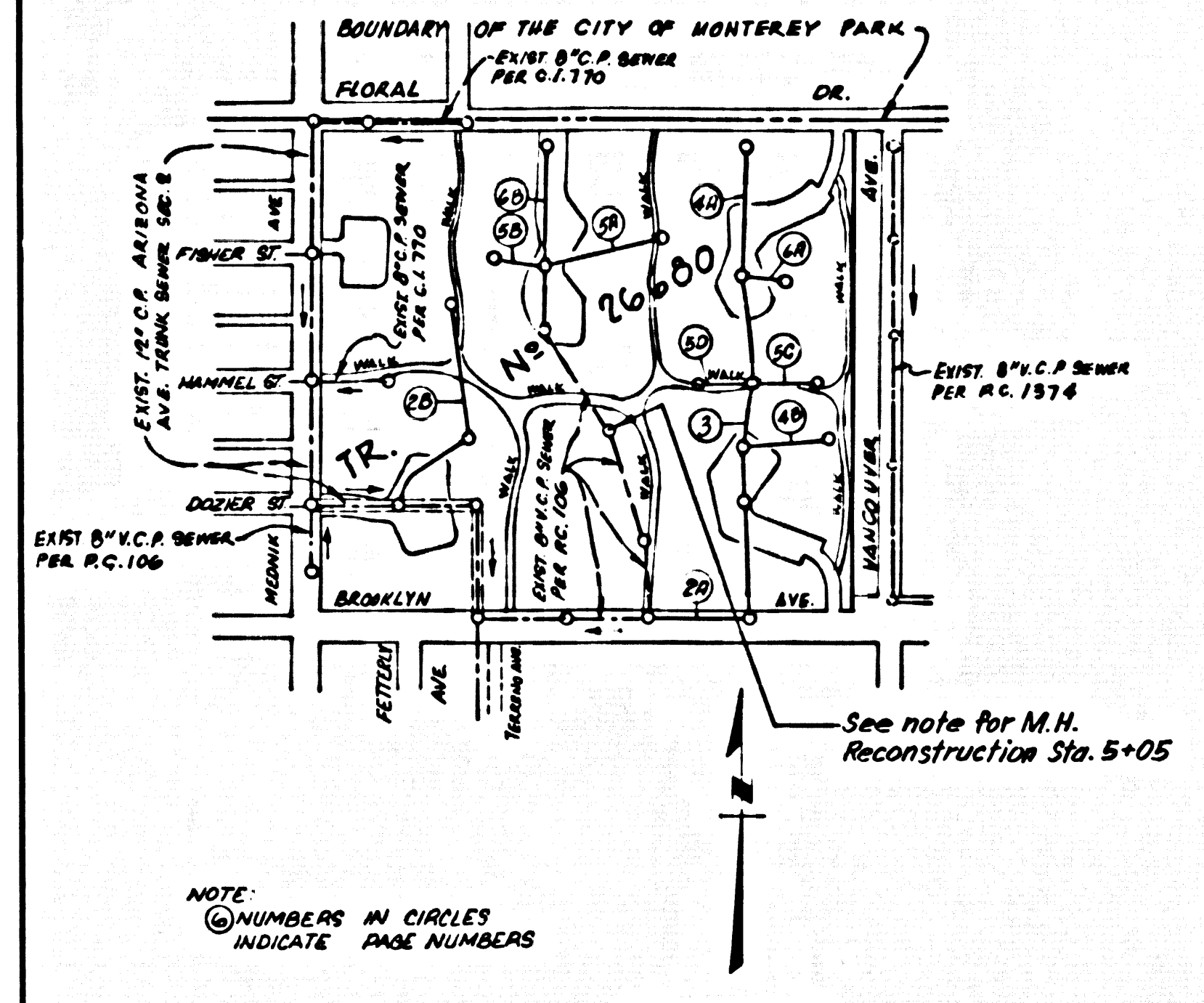


B.M. J'ADLB. 1223 ELEV. 28985
 P.C. 2543 (R.V. 1965) 4' 0" IN E.C.
 N. FLORENCE AVE 100' N. 4' 18" E. 1/4
 E. FIRM. CL. MAR. '1964"
 QUAD. 19 65



THE FOLLOWING LATEST REVISION STANDARD PLANS ON FILE IN THE OFFICE OF THE COUNTY ENGINEER SHALL APPLY IN THE CONSTRUCTION OF THIS PROJECT.

| | |
|-------------------------------------|------|
| LEGEND | |
| MINIMUM PUBLIC SAFETY REQUIREMENTS | 5-1 |
| BRICK MANHOLE | 5-2 |
| LOCKING MANHOLE FRAME AND COVER | 5-4 |
| STANDARD MANHOLE SIZES | 5-5 |
| BEDDING FOR SEWER PIPE | 5-6 |
| CRACKING AND ENCASEMENT | 5-7 |
| PIPE OR TEE SUPPORT | 5-8 |
| ALLOWABLE TRENCH WIDTHS | 5-9 |
| RECTANGULAR SHALLOW MANHOLE | 5-10 |
| RECTANGULAR MANHOLE FRAME AND COVER | 5-11 |

NOTE:
 The manholes at station 1+25.27 & B+15 Per RC. 106, Sheet X5, were reconstructed to meet finish grade.
 The following saddles were constructed on RC. 106, Sheet X5: (Eastside) 0+30, 0+90, 4+29, 5+30, 7+21 & 7+95.
 RECONSTRUCT MANHOLE TOP, STATION 5+05 PER PRIVATE CONTRACT NO. 106, SHEET X5, TOP OF MANHOLE TO BE 6 INCHES BELOW FINISHED GRADE PER STANDARD 5-12.
 EXISTING SEWERS NOT INCLUDED IN THIS PLAN TO BE ABANDONED ACCORDING TO SEC. 506-5 OF STANDARD SPECIFICATIONS.

No connections for the disposal of industrial wastes shall be made to sewers shown on these grades without written permission from the Chief Engineer and General Manager of the County Sanitation Districts.
 County Sanitation Districts shall be notified prior to the following to that required inspection can be made (Phone 337-1025 - 24 hours).
 Breaking into existing manhole on District trunk sewer.
 Construction of house connections to District trunk sewer.
 Acceptance of the project.

EAST LOS ANGELES BLDG. DIST. NO. 6

- NOTES:**
1. EXISTING SEWERS ON THE PROPERTY LINE OR PROPERTY LINE PRODUCED AT RIGHT ANGLES TO THE SEWER LINE AT THE CENTER LINE OF EACH MANHOLE.
 2. NO REPRESENTATIVE OF THE COUNTY ENGINEER WILL SURVEY OR LAY OUT ANY PORTION OF THIS PROJECT.
 3. THE PRIVATE ENGINEER SHALL FURNISH THE COUNTY ENGINEER WITH GRADE SHEETS AND STATIONING FOR ALL HOUSE LATERALS AND "T" OR "Y" BRANCHES AND SHALL PROVIDE STAKE FOR THEM AT THESE PROPOSED LOCATIONS WITH SEASONING PLANTS MARKED.
 4. ALL HOUSE LATERALS SHALL BE CONSTRUCTED IN A STRAIGHT ALIGNMENT AT RIGHT ANGLES FROM THE MAIN LINE SEWER EXCEPT AS SHOWN ON THE PLANS. HOUSE LATERALS FROM CHIMNEYS SHALL NOT HAVE AN ANGLE OF LESS THAN 45° WITH THE MAIN LINE SEWER. ANY CHANGE IN ALIGNMENT SHALL BE INDICATED IN WRITING BY THE PRIVATE ENGINEER.
 5. THE PRIVATE ENGINEER SHALL FURNISH THE HOUSE LATERAL DEPTH AT THE PROPERTY LINE BELOW THE TOP OF CURB ELEVATION FOR EACH HOUSE LATERAL ON THE GRADE SHEET.
 6. NO REVISIONS SHALL BE MADE IN THESE PLANS WITHOUT THE APPROVAL OF THE COUNTY ENGINEER.
 7. THE CONTRACTOR SHALL NOTIFY THE CONSTRUCTION DIVISION BY TELEPHONE, BARRISON 9-201, EXT. 8130, AT LEAST TWENTY-FOUR HOURS BEFORE STARTING ANY WORK UNDER THIS CONTRACT.
 8. ALL SPECIFICATIONS SHALL BE EITHER BRICK MANHOLES PER 5-2 OR PRECAST CONCRETE MANHOLES PER 5-3, EXCEPT AS NOTED.
 9. MANHOLE TOPS IN UNIMPROVED AREAS OF WAY TO BE SIX INCHES ABOVE FINISHED GRADE.
 10. USE EXTRA STRENGTH PIPE ALL PIPE IS STANDARD DEPTH EXCEPT AS NOTED.
 11. WITHPAD SLAY PIPE JOINTS SHALL BE TYPE "T", "Y" OR "Z" PER S.D. 514. S.E.C. 508-2.
 12. A HOUSE HOLE IS WITHIN THREE FEET OF THE SEWER, THE SEWER SHALL BE DISCUSSED, PER S.D. 514, CASE 2 THE PART IN EACH CASE FROM THE FRONT OF INTERFERENCE.
 13. IF DURING THE COURSE OF CONSTRUCTION IT IS DETERMINED THAT THERE IS LESS THAN FOUR FEET OF COVER OVER THE TOP OF A MAIN LINE OF HOUSE LATERAL V.C.P. SEWER WHICH IS NOT SHOWN ON THE PLANS, THE PIPE SHALL BE ENCASED PER S.D. 514, CASE 2 UNLESS OTHERWISE APPROVED BY THE COUNTY ENGINEER.
 14. HOUSE LATERALS TO BE CONSTRUCTED WITH INVERTS AT PROPERTY LINE PER S.D. 514, CASE 2 EXCEPT AS NOTED.
 15. REVERSE ALL TRENCHES WITHIN FIVE FEET FROM THE PROPERTY LINE TO MEET L.A. COUNTY ROAD DEPT. OR CALIFORNIA STATE HIGHWAY REQUIREMENTS IN ACCORDANCE WITH PERMITS.
 16. SEWERS TO BE TESTED FOR LEAKAGE PER SEC. 506-5 OF THE STD. SPEC. (SPECIAL PROVISIONS).
 17. SEWERS TO BE TESTED PER S.D. 514, BY HYD. PRESS. REGARDING SAFETY SEWERS.
 18. SPECIAL MANHOLE IN DESIGNATED AREAS:
 - a) BACKFILL TRENCH & REPLACE STRIKE EARTH REMOVED TO AT LEAST THE NATURAL OR FORMER SURFACE OF THE GROUND OR THE SURFACE PLAN APPROVED FOR THE "TRUCK BY" BUILDING & SAFETY DIVISION.
 - b) ALL BACKFILL & EARTH REMOVED SHALL BE COMPACTED TO A MIN. OF 90% OF MAX. DENSITY PER A.S.T.M. 99. METHOD OF TEST D-1557 AS MODIFIED ACCEPTABLE CERTIFICATION OF SUCH COMPACTED SHALL BE SUBMITTED TO THE CONSTRUCTION DIVISION.
 - c) ALL WAYS ON THE BRANCHES MAY BE USED FOR CONNECTIONS TO SANITARY SEWERS EXCEPT AS NOTED.
 19. ALL HOUSE LATERALS OVER THREE FEET OF COVER SHALL BE MADE WITH 2 BARRED BLOW PIPE. THE "T" OR "Y" BRANCHES WITH NECESSARILY PER STANDARD SPECIFICATION, SECTION 508-15.
 20. ALL HOUSE LATERALS WITH EXISTING SADDLES SHALL BE CONSTRUCTED WITH SADDLES PER S.D. 514, CASE 2 UNLESS OTHERWISE APPROVED BY THE COUNTY ENGINEER.

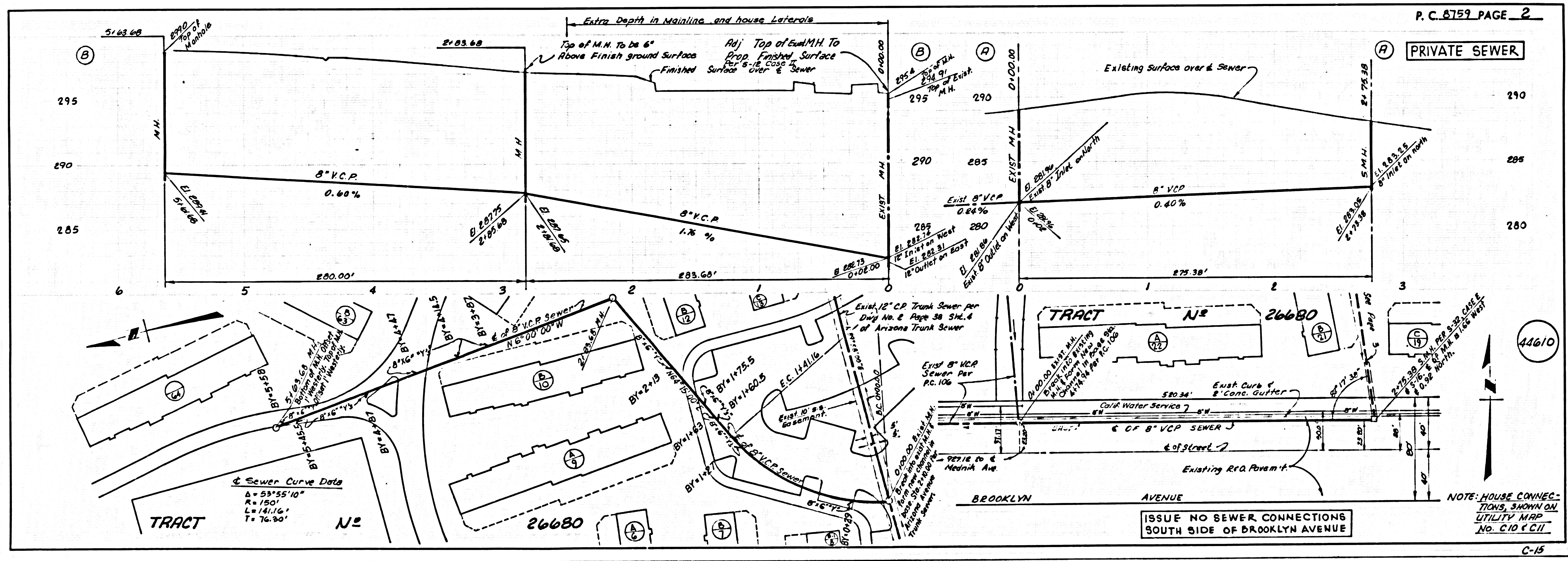
COLLECT CHARGES AS INDICATED

PROFILE, ALIGNMENT AND GRADE OF P.C. 8759
 SANITARY SEWERS PAGE 1

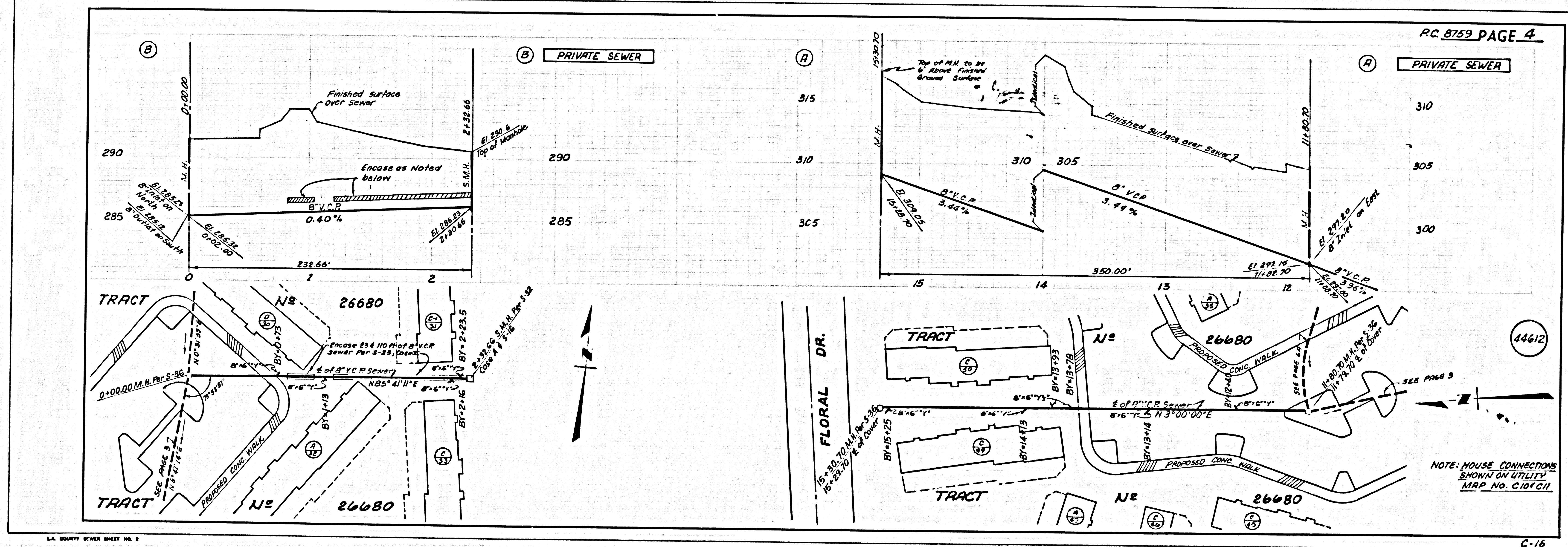
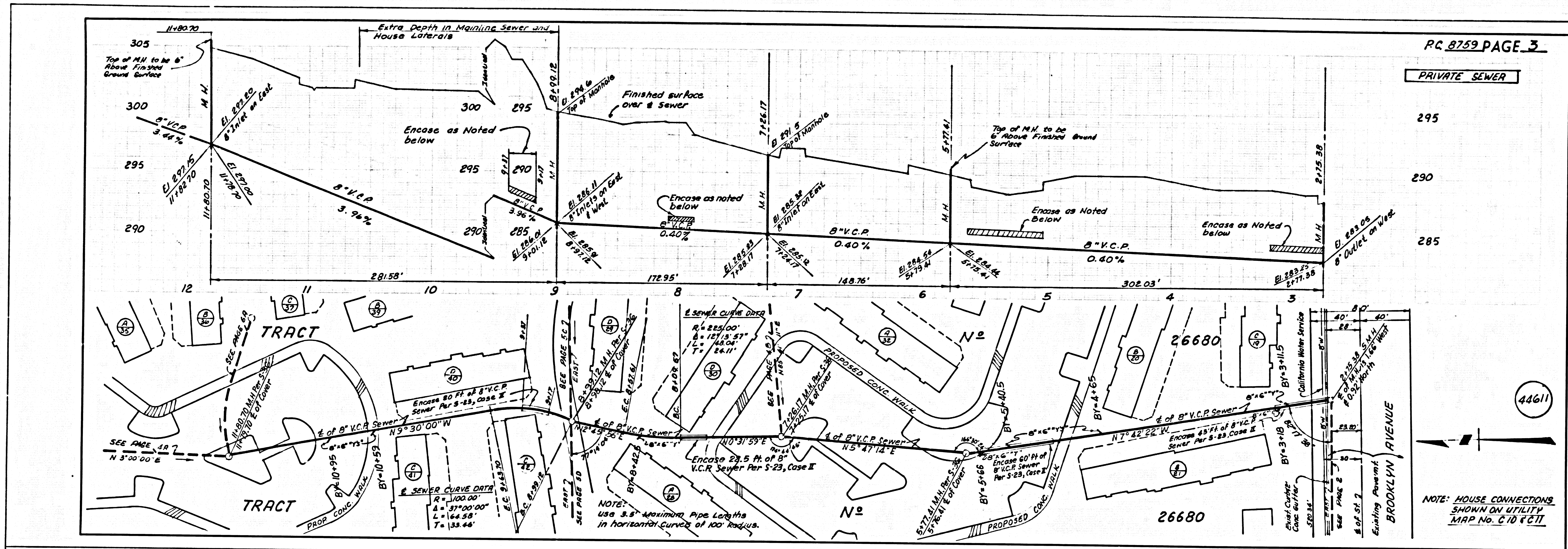
TO BE CONSTRUCTED IN
 MARAVILLA HOUSING PROJECT
 HUD PROJECT NO. CAL 2-4
 (TRACT No. 26680)
 PRIVATE SEWER
 PRIVATE CONTRACT NO. 8759
 W.S. 56, A-2
 2 SHEETS, 4 PAGES
 SCALE: VERT. 1" = 4' HORIZ. 1" = 40'
 MAY, 1972
 PREPARED IN THE OFFICES OF
 V.T.N. Los Angeles
 5151 VAN NUYS BLVD., VAN NUYS, CALIF.
 BY: *[Signature]*
 REG. C.E. NO. 12,885
 FOR LEGEND SEE PLAN NO. 5-1

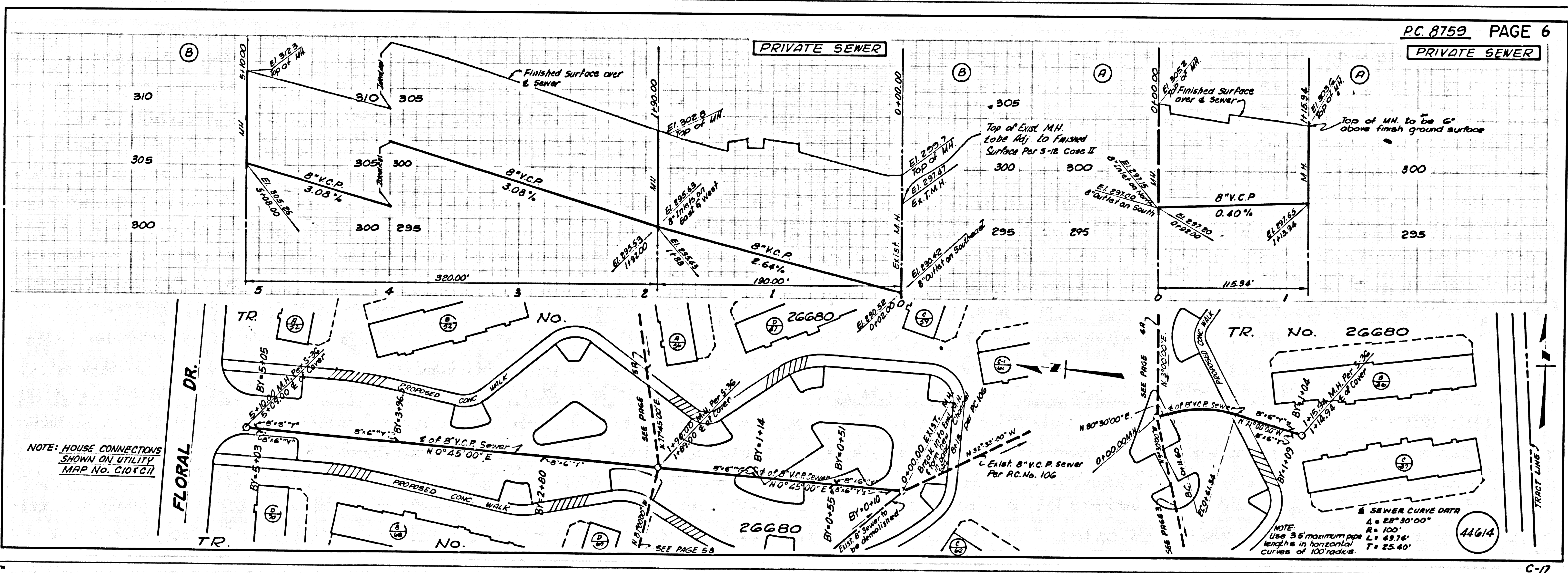
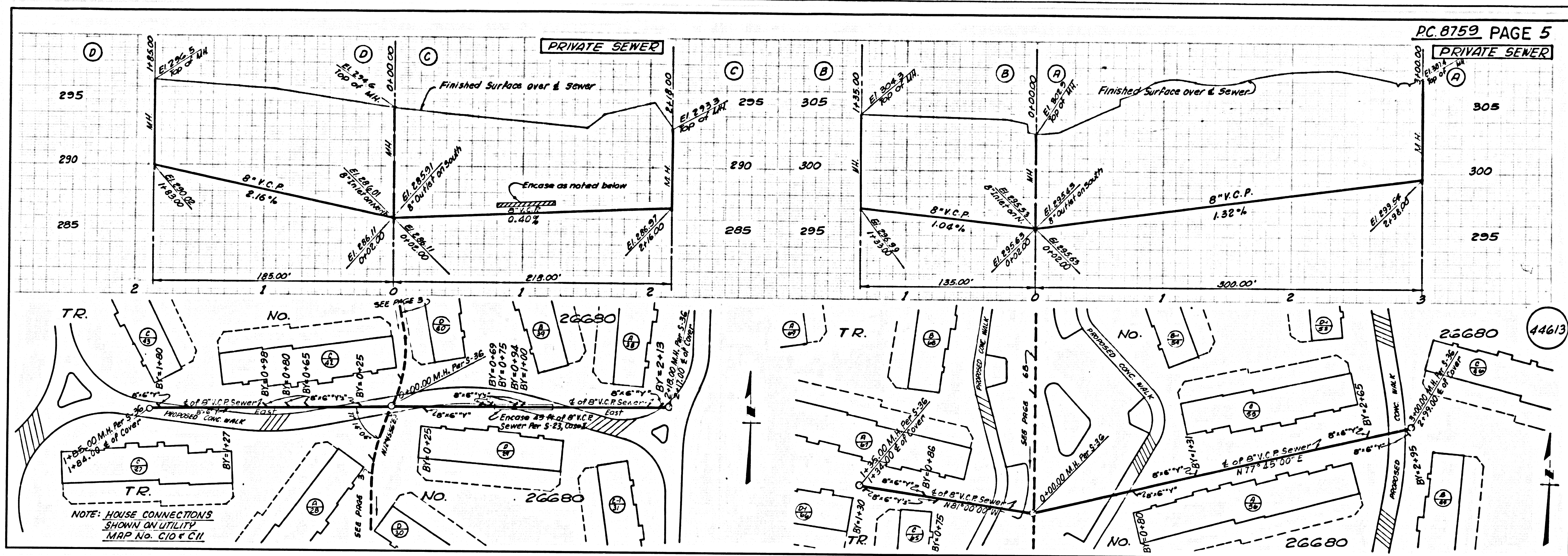
NOTES:
 GRADES TO WHICH THE IMPROVEMENT IS TO BE CONSTRUCTED ARE SHOWN ON PLANS AND PROFILES. GRADE POINTS FOR TOP OF CURB, CENTER LINE OF STREET, OR CENTER LINE OF ALLEY ARE SHOWN AT CURB OR POINTS. AT ALL POINTS BETWEEN DESIGNATED POINTS THE GRADE SHALL BE ESTABLISHED BY A STRAIGHT LINE. THE GRADE BETWEEN SAID DESIGNATED POINTS SHALL BE CONSTRUCTED ACCORDING TO STANDARD SPECIFICATIONS AND PLANS. GRADES FOR THE HOUSE LATERALS SHALL BE CONSTRUCTED ACCORDING TO STANDARD SPECIFICATIONS AND PLANS. GRADES FOR THE MAIN LINE SEWER SHALL BE CONSTRUCTED ACCORDING TO STANDARD SPECIFICATIONS AND PLANS. GRADES FOR THE HOUSE LATERALS SHALL BE CONSTRUCTED ACCORDING TO STANDARD SPECIFICATIONS AND PLANS. GRADES FOR THE MAIN LINE SEWER SHALL BE CONSTRUCTED ACCORDING TO STANDARD SPECIFICATIONS AND PLANS. GRADES FOR THE HOUSE LATERALS SHALL BE CONSTRUCTED ACCORDING TO STANDARD SPECIFICATIONS AND PLANS.

COUNTY OF LOS ANGELES, CALIFORNIA
 HARVEY T. BRANIFF, COUNTY ENGINEER
 APPROVED BY: *[Signature]*
 J. N. O371.47



ISSUE NO SEWER CONNECTIONS SOUTH SIDE OF BROOKLYN AVENUE





12/28/88 11:00 AM

C-17