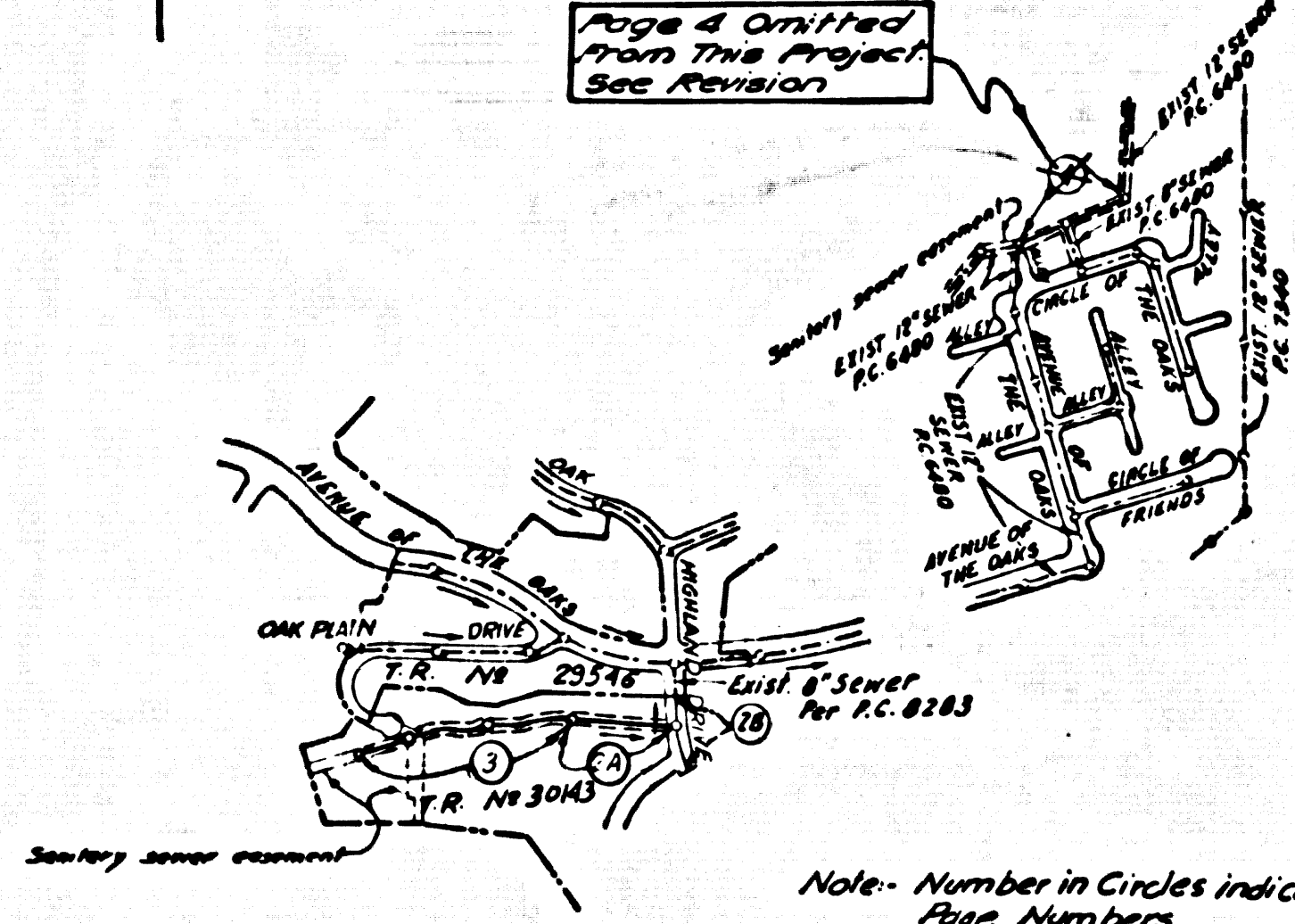


B.M. RM 2888 ELEV. 1330.654
 RD 847 3/4 SE COR SIERRA HWY
 FRIENDLY VALLEY PKWY ROFT.S.
 479 FT. E. CL INT
 NEWHALL QUAD. 1963

Page 4 Omitted
 from this Project
 See Revision



INDEX MAP
 SCALE: 1" = 500'
 P.C. NO. 8760
 T.R. NO. 30143

15. BACKFILL ADJACENT TO PROPOSED BUILDINGS WHERE INDICATED ON PLAN.
 BACKFILL TO DEPTH BELOW SURFACE AS NOTED ON PLAN.
 BACKFILL SHALL CONSIST OF JETTED SAND OR COMPACTED CRUSHED AGGREGATE PER SEC. 808-1.71 OF STANDARD SPECIFICATION.
 16. MINIMUM COVER OVER TOP OF SEWER SHALL BE 4.0 FEET, DURING PRELIMINARY GRADING OPERATIONS.

REVISION: NOV 3, 1972
 OMITTED PAGE 4 FROM THIS PROJECT
 APPROVED: [Signature] P.E. IN CHARGE
 OFFICE OF THE COUNTY ENGINEER

No connections for the disposal of industrial wastes shall be made to sewers serving the above structures without written permission from the Chief Engineer and General Manager of the County Sanitation Districts.

County Sanitation Districts shall be notified prior to the following so that required inspection can be made (Phone 337-0285 - 3-0900)

Approval of the project.

GENERAL NOTES:

1. SEWERS ARE TO BE INSTALLED IN ACCORDANCE WITH THE STANDARD SPECIFICATIONS FOR PUBLIC WORKS CONSTRUCTION (1972 EDITION) WITH THE SUPPLEMENTARY AND COUNTY ENGINEER SPECIAL PROVISIONS FOR THE CONSTRUCTION OF SANITARY SEWERS ADAPTED TO THE COUNTY OF LOS ANGELES, CALIFORNIA.
2. NO IMPROVEMENTS SHALL BE MADE IN THESE PLANS WITHOUT THE APPROVAL OF THE COUNTY ENGINEER.
3. NO AMENDMENTS OF THE COUNTY ENGINEER SHALL BE MADE ON ANY PORTION OF THE WORK.
4. GRADES TO WHICH THE IMPROVEMENTS ARE TO BE CONSTRUCTED ARE SHOWN ON PLANS AND PROFILE GRADE POINTS FOR TOP OF CURB, CENTER LINE OF STREET, OR CENTER LINE OF ALLEYS ARE SHOWN BY CIRCLES OR TRIANGLES AT ALL POINTS BETWEEN GRADE-TO-POINTER POINTS. THE GRADE SHALL BE ESTABLISHED SO AS TO CONFORM TO A STRAIGHT LINE BEYOND THESE DESIGNATED POINTS.
5. THE PRIVATE ENGINEER SHALL FURNISH THE COUNTY ENGINEER WITH GRADE SHEETS AND STATIONING FOR ALL UNDERGROUND AND "T" OR "T" BRANCHES AND SHALL PROVIDE STAKES FOR THESE AT THEIR PROPER LOCATIONS WITH STATIONING PLAINLY MARKED. THE PRIVATE ENGINEER SHALL BE RESPONSIBLE FOR THE PROTECTION OF ALL EXISTING UTILITIES AND STRUCTURES. GRADES AS SHOWN ON THE PLANS SHALL BE MAINTAINED EXCEPT AS NOTED OTHERWISE. ALL GRADES SHALL NOT BE LESS THAN 4" WITH THE ALLY LINE SEWER. ANY CHANGE IN ALIGNMENT SHALL BE INDICATED IN WRITING BY THE PRIVATE ENGINEER.
6. THE PRIVATE ENGINEER SHALL FURNISH THE COUNTY ENGINEER WITH A PERMIT TO EXCAVATE IN COUNTY STREETS FROM THE L.A. COUNTY ROAD DEPT., DISTRICT OFFICE NO. 2, AND PAY A FEE TO THE COUNTY ENGINEER, ROOM 525, COUNTY ENGINEERING BLDG. NO. 240 WEST IMPERIAL AVENUE, NEWHALL, CALIFORNIA. REGIONAL OFFICE, TO COVER THE COST OF CONSTRUCTION INSPECTION AND RECORD PLANS.
7. IF WORK IS TO BE DONE IN A STATE HIGHWAY, A PERMIT MUST BE OBTAINED FROM THE STATE OF CALIFORNIA, DIVISION OF HIGHWAYS, 120 SOUTH BRIDGE STREET, LOS ANGELES, CALIFORNIA.
8. APPROVAL OF THIS PLAN BY THE COUNTY OF LOS ANGELES DOES NOT CONSTITUTE A REPRESENTATION AS TO THE ACCURACY OF THE LOCATION OF OR THE EXISTENCE OR NON-EXISTENCE OF ANY UNDERGROUND UTILITY PIPE, OR STRUCTURE WITHIN THE LIMITS OF THE PROJECT. THE NOTE APPLIES TO ALL PAGES.
9. REFER TO SECTION 218.1 OF THE STANDARD SPECIFICATIONS, REGARDING SAFETY SIGNS.

CONSTRUCTION NOTES:

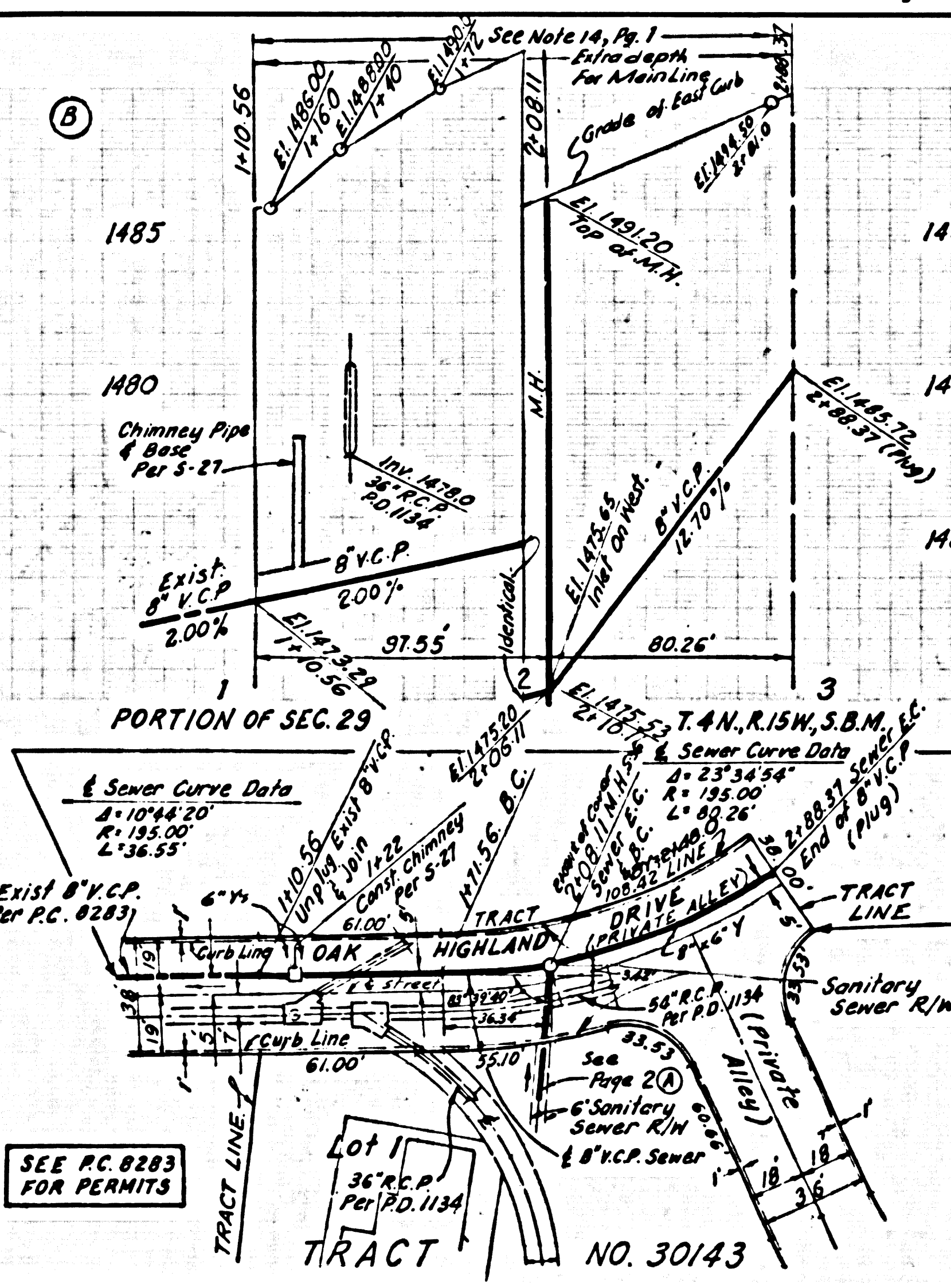
1. WORK SHALL BE CONSTRUCTED ACCORDING TO THE STANDARD SPECIFICATIONS FOR PUBLIC WORKS CONSTRUCTION (1972 EDITION) WITH THE SUPPLEMENTARY AND COUNTY ENGINEER SPECIAL PROVISIONS FOR THE CONSTRUCTION OF SANITARY SEWERS ADAPTED TO THE COUNTY OF LOS ANGELES, CALIFORNIA.
2. THE CONTRACTOR SHALL NOTIFY THE COUNTY ENGINEER BY TELEPHONE, AT LEAST 48 HOURS, AT LEAST TWENTY-FOUR HOURS BEFORE STARTING ANY WORK UNDER THIS CONTRACT.
3. WORK SHALL BE DONE IN ACCORDANCE WITH THE STANDARD SPECIFICATIONS FOR PUBLIC WORKS CONSTRUCTION (1972 EDITION) WITH THE SUPPLEMENTARY AND COUNTY ENGINEER SPECIAL PROVISIONS FOR THE CONSTRUCTION OF SANITARY SEWERS ADAPTED TO THE COUNTY OF LOS ANGELES, CALIFORNIA.
4. ALL STRUCTURES SHALL BE OTHER BACKFILL PER SEC. 808-1.71 OF STANDARD SPECIFICATIONS.
5. PROVIDE STAKES ON THE PROPERTY LINE OR PROPERTY LINES PRODUCE AT RIGHT ANGLES TO THE SEWER LINE AT THE CENTER LINE OF EACH MANHOLE.
6. MANHOLE TOPS IN UNIMPROVED RIGHTS OF WAY TO BE LEVEL WITH FINISHED GRADE.
7. STREETS SHALL BE OPENED UP TO TRAFFIC AS SOON AS POSSIBLE AFTER THE SEWER LINE IS Laid IN PLACE.
8. IF A POWER POLE IS WITHIN THREE FEET OF THE SEWER, THE SEWER SHALL BE ENCASED IN 2" MIN. CURB OR TWO FEET ON EACH SIDE FROM THE POINT OF INTERFERENCE.
9. IF DURING THE COURSE OF CONSTRUCTION IT IS DETERMINED THAT THERE IS LESS THAN FOUR FEET OF COVER OVER THE TOP OF A MAIN LINE OR BRANCH LATERAL V.C.P. SEWER WHICH IS NOT INDICATED ON THE PLANS, THE PIPE SHALL BE ENCASED PER SEC. 808-1.71 UNLESS OTHERWISE APPROVED BY THE COUNTY ENGINEER.
10. ALL JOINTS BETWEEN CLAY MAIN PIPE AND VITRIFIED CLAY PIPE SHALL BE MADE WITH A RUBBER GASKET JOINT, TYPE "C" OR "D", WITH RUBBERING IF NECESSARY PER STANDARD SPECIFICATIONS, SECTION 808-2.
11. SEWERS TO BE INSTALLED FOR SEWERAGE PER SECTION 808.2.2 OF THE STANDARD SPECIFICATIONS AND SPECIAL PROVISIONS.
12. INSURE ALL TRENCHES WITHIN RIGHTS OF WAY TO MEET L.A. COUNTY ROAD DEPT. OR CALIFORNIA STATE HIGHWAY REQUIREMENTS IN ACCORDANCE WITH PERMITS.
13. SPECIAL BACKFILL IN DESIGNATED AREAS: (A) BACKFILL TRENCH AND REPLACE OTHER EARTH REMOVED SO AS TO ACHIEVE THE NATURAL OR FINISHED GRADES AND SLOPES SHOWN ON THE GRADING PLAN. APPROVED PER THIS TRACT BY THE BUILDING AND SAFETY DIVISION. (B) ALL BACKFILL AND EARTH REPLACED SHALL BE COMPACTED TO A MINIMUM OF 90% OF MAXIMUM DENSITY PER A.S.T.M. STANDARD METHOD OF TEST D-1557-67 AS INDICATED. ACCEPTABLE CERTIFICATION OF SUCH COMPACTION SHALL BE SUBMITTED TO THE CONSTRUCTION DIVISION.

PROFILE, ALIGNMENT AND GRADE OF
SANITARY SEWERS PAGE 1
 CONSTRUCTED IN
TRACT NO. 30143
PRIVATE CONTRACT NO. 8760
 INDEX 258-5-181
 W.S. 62
 2 SHEETS, 4 PAGES
 SCALE: 1" = 10' JULY, 1972
 PREPARED IN THE OFFICES OF
SIKAND ENGINEERING ASSOCIATES
 15205 Burbank Blvd. VAN NUYS, CALIF. 91401
 BY: [Signature]
 REG. C. E. No. 3812

THE FOLLOWING LATEST REVISED STANDARD PLANS ON FILE IN THE OFFICE OF THE COUNTY ENGINEER SHALL APPLY IN THE CONSTRUCTION OF THIS PROJECT:

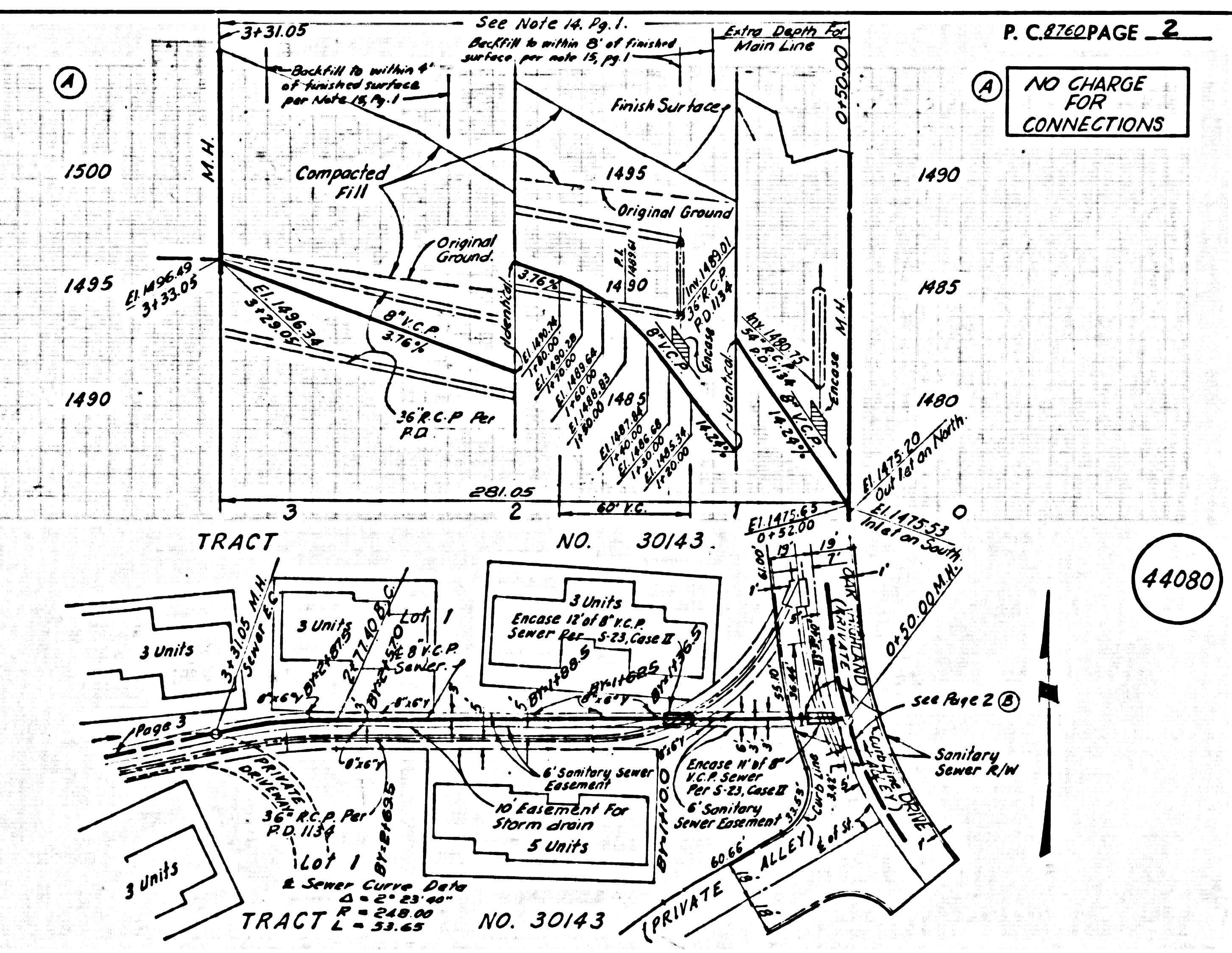
SEWER	8-1
MINIMUM PUBLIC SAFETY REQUIREMENTS	8-2
BRICK MANHOLES	8-3
STANDARD MANHOLE SET	8-4
BRICKS FOR SEWER PIPES	8-5
CRACKING AND REPAIRMENT	8-6
TYPE OF THE SEWER	8-7
ALLOWABLE TRENCH WIDTHS	8-8
LOCKING MANHOLE FRAMES AND COVERS	8-9
NON-APPROVED PRECAST CONCRETE MANHOLES	8-10
CHIMNEY PIPE AND BASE	8-11
RECONSTRUCTION OF BRICK M.H. TOPS	8-12

COUNTY OF LOS ANGELES, CALIFORNIA
 HARVEY T. BRANDY COUNTY ENGINEER JOHN D. PARKHURST, CHIEF ENGINEER
 APPROVED [Signature] 7/1/72 APPROVED [Signature]
 REGIONAL ENGINEER DATE OFFICE ENGINEER
 CHECKED [Signature] 7/1/72
 MO. CO. NO. 14790
 NEWHALL BLDG. DIST. 0.2 I.N. 0250.02



CONTRACTOR MUST VERIFY EXISTING INVERT ELEV. AT STA. 1+10.56 (PAGE 2B) PRIOR TO CONSTRUCTING SEWER.

NO CONNECTIONS ALLOWED UNTIL PROPERTY HAS PAID THE AMBASSADOR FEE TO COUNTY SANITATION DISTRICT NO. 2.



NO CHARGE FOR CONNECTIONS

