

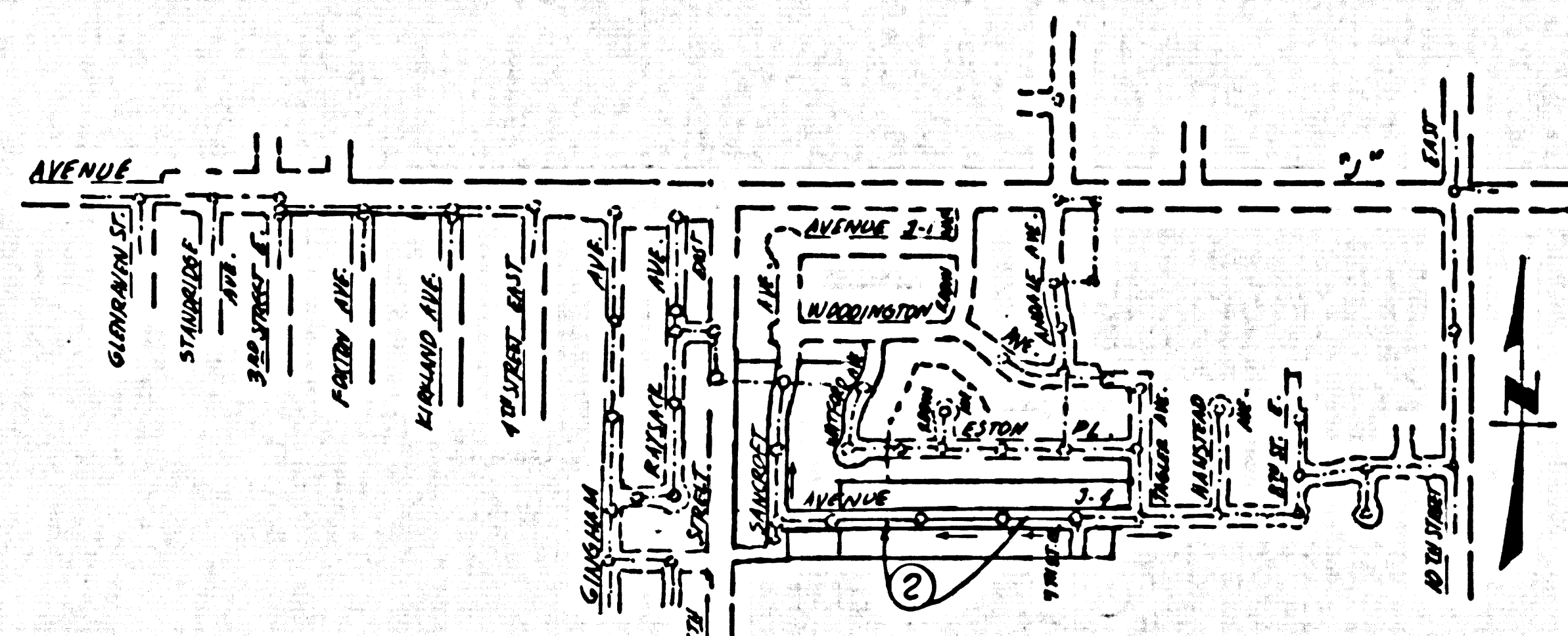
B.M. B.L. 65 ELEV. 2391.672  
 C.S. MON. IN WELL @ E INTERSECTION  
 AVENUE "J" AND 5<sup>TH</sup> STREET EAST,  
 M.R.D. T.7N, R.12W, 1/4 COR. 14-23, E. 6.85E  
 LANCASTER QUAD. 19 65

# LANCASTER BLDG. DIST. NO. 8

PROFILE ALIGNMENT AND GRADE OF **P.C. 8763**  
**SANITARY SEWERS PAGE 1**  
 CONSTRUCTED IN

**TRACT NO. 27932**  
**PRIVATE CONTRACT NO. 8763**

W.S. 70  
 1 SHEET, 2 PAGES  
 SCALE: VERT. 1" = 4' HORIZ. 1" = 40'  
 MAY 1972  
 PREPARED IN THE OFFICES OF  
**CONSOLIDATED ENGINEERING COMPANY**  
 8045 WEST OLYMPIC BOULEVARD  
 BEVERLY HILLS, CALIFORNIA  
 BY *James A. ...* 5/1/72  
 REG. C. E. NO. 12812



**INDEX MAP**  
 SCALE: 1" = 600'  
 P.C. NO. 8763  
 TRACT NO. 27932

**ISSUE CONNECTION PERMITS FOR LOTS 1, 2 AND 32 FROM P.C. 8595**

- NOTES:**
- PROVIDE STAKES ON THE PROPERTY LINE OR PROPERTY LINES PRODUCED AT RIGHT ANGLES TO THE SEWER LINE AT THE CENTER LINE OF EACH MANHOLE.
  - NO REPRESENTATIVE OF THE COUNTY ENGINEER WILL PURVEY OR LAY OUT ANY PORTION OF THE WORK.
  - THE PRIVATE ENGINEER SHALL FURNISH THE COUNTY ENGINEER WITH GRADE SHEETS AND STATIONINGS FOR ALL HOUSE LATERALS AND "T" BRANCHES AND SHALL PROVIDE STAKES FOR THEM AT THEIR PROPER LOCATIONS WITH STATIONING PLAINLY MARKED. ALL HOUSE LATERALS SHALL BE CONSTRUCTED IN A STRAIGHT ALIGNMENT AT RIGHT ANGLES FROM THE MAIN LINE SEWER EXCEPT AS SHOWN ON THE PLANS. HOUSE LATERALS FROM CHIMNEYS SHALL NOT HAVE AN ANGLE OF LESS THAN 45° WITH THE MAIN LINE SEWER. ANY CHANGE IN ALIGNMENT SHALL BE REQUESTED IN WRITING BY THE PRIVATE ENGINEER.
  - THE PRIVATE ENGINEER SHALL FURNISH THE HOUSE LATERAL DEPTH AT THE PROPERTY LINE BELOW THE TOP OF CURB ELEVATION FOR EACH HOUSE LATERAL ON THE GRADE SHEET.
  - NO REVISIONS SHALL BE MADE IN THESE PLANS WITHOUT THE APPROVAL OF THE COUNTY ENGINEER.
  - THE CONTRACTOR SHALL NOTIFY THE CONSTRUCTION DIVISION BY TELEPHONE, MARSHALL 4-4747, EXT. 21 21, AT LEAST TWENTY-FOUR HOURS BEFORE STARTING ANY WORK UNDER THIS CONTRACT.
  - MANHOLES SHALL BE BRICK SEWER STRUCTURES PER S-1, PRECAST CONCRETE MANHOLES PER S-26 (MAY BE USED AS NOTED) - BASE ON APPROVING APPROVED BY THE COUNTY ENGINEER.
  - "T" OR "Y" BRANCHES MAY BE USED FOR CONNECTIONS TO MAIN LINE SEWER EXCEPT AS NOTED.
  - USE EXTRA STRENGTH PIPE, ALL PIPE IS STANDARD DEPTH EXCEPT AS NOTED.
  - IF A POWER POLE IS WITHIN THREE FEET OF THE SEWER, THE SEWER SHALL BE ENCASED, PER S-25, TWO FEET ON EACH SIDE FROM THE POINT OF INTERFERENCE.
  - IF DURING THE COURSE OF CONSTRUCTION IT IS DETERMINED THAT THERE IS LESS THAN FOUR FEET OF COVER OVER THE TOP OF A MAIN LINE OR HOUSE LATERAL V.C.P. SEWER WHICH IS NOT INDICATED ON THE PLANS, THE PIPE SHALL BE ENCASED PER S-25, UNLESS OTHERWISE APPROVED BY THE COUNTY ENGINEER.
  - HOUSE LATERALS TO BE CONSTRUCTED WITH INVERTS AT PROPERTY LINE 6 FEET BELOW CURB GRADE EXCEPT AS NOTED.
  - RESURFACE ALL TRENCHES WITHIN PAVED AREAS TO MEET L.A. COUNTY ROAD DEPT. OR CALIFORNIA STATE HIGHWAY REQUIREMENTS IN ACCORDANCE WITH PERMITS.
  - SHOULDER TO BE TYPED FOR LANCASTER PER SEC. 306-2.2.7 OF THE STANDARD SPEC AND SPECIAL PROVISIONS FOR BULKHEADS IN STREETS. CERTIFICATION OF BACKFILL COMPLETION AND SANDS EQUIVALENTS BY A QUALIFIED, REGISTERED TESTING LABORATORY SHALL BE PROVIDED BY THE PERMITTEE PRIOR TO THE ISSUANCE OF A CERTIFICATE OF PARTIAL ACCEPTANCE.
  - ALL STATE AND LOCAL TRENCH SAFETY ORDERS WILL BE STRICTLY ENFORCED, AND SHALL COMPLY WITH STANDARD SPECIFICATIONS SECTION 7-10.0.1

THE FOLLOWING COUNTY ENGINEER STANDARD PLANS APPLY TO THIS PROJECT:

LEGEND	S-1
MINIMUM EXCAVATION SAFETY REQUIREMENTS	S-2
BRICK MANHOLE	S-3
NON-REINFORCED PRECAST CONCRETE MANHOLE	S-26
MANHOLE COILING AND COVER	S-11
MANHOLE STEP	S-12
BEDDING FOR SEWER PIPE	S-13
CRADLING AND ENCASEMENT	S-23
WYDROR TEE SUPPORT	S-24
ALLOWABLE TRENCH WIDTHS	S-25

**NOTICE TO CONTRACTOR**  
 The existence and location of any underground utility pipes or structures shown on these plans are obtained by a search of the available records to the best of my knowledge there are no existing utilities except as shown on these plans. The contractor is required to take due precautionary measures to protect the utility lines shown and any other lines not of record or not shown on these plans.  
*James A. ...* 5/1/72  
 REG. C.E. NO. 12812

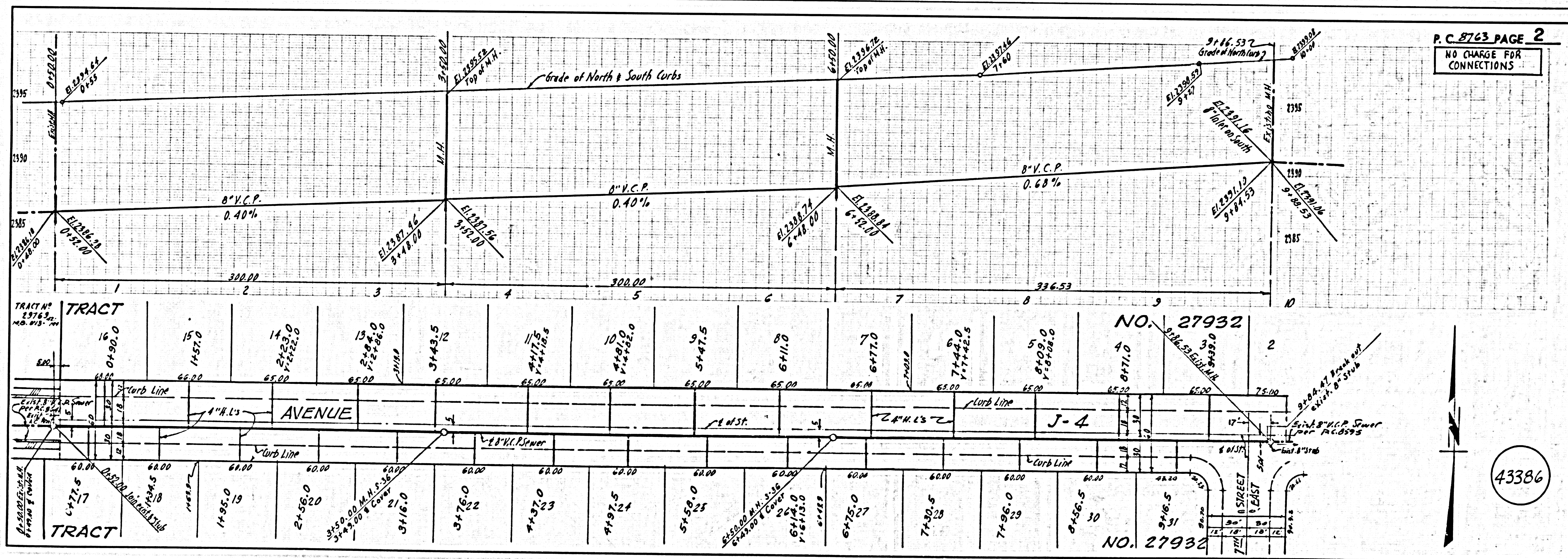
**NOTE:**  
 GRADPS TO WHICH THIS IMPROVEMENT IS TO BE CONSTRUCTED ARE SHOWN ON PLANS AND PROFILES. GRADE POINTS FOR TOP OF CURB, CENTER LINE OF STREETS, OR CENTER LINE OF ALLEYS ARE SHOWN BY CIRCLES ON PROFILES AT ALL POINTS BETWEEN DESIGNATED POINTS. THE GRADE SHALL BE ESTABLISHED SO AS TO CONFORM TO A STRAIGHT LINE DRAWN BETWEEN SAID DESIGNATED POINTS. THIS DRAWING AND THE DATA HEREON ARE HEREBY MADE A PART OF THE SPECIFICATIONS. BEFORE WORK CAN BE STARTED, THE CONTRACTOR MUST OBTAIN A PERMIT TO EXCAVATE IN COUNTY STREETS FROM THE L.A. COUNTY ROAD DEPT., DISTRICT OFFICE NO. 8, AND PAY A FEE TO THE COUNTY ENGINEER, J. D. PARKHURST, CHIEF ENGINEER, COUNTY OF LOS ANGELES, 120 SOUTH SPRING STREET, LOS ANGELES, CALIFORNIA. APPROVAL OF THIS PLAN BY THE COUNTY OF LOS ANGELES DOES NOT CONSTITUTE A REPRESENTATION AS TO THE ACCURACY OF THE LOCATION OR OF THE EXISTENCE OF ANY UNDERGROUND UTILITY PIPE, OR STRUCTURE WITHIN THE LIMITS OF THE PROJECT. THIS NOTE APPLIES TO ALL PAGES. IF WORK IS TO BE DONE IN A STATE HIGHWAY, A PERMIT MUST BE OBTAINED FROM THE STATE OF CALIFORNIA, DIVISION OF HIGHWAYS, 128 SOUTH SPRING STREET, LOS ANGELES, CALIFORNIA.

**COUNTY OF LOS ANGELES, CALIFORNIA**  
 HARVEY L. BRANDT, COUNTY ENGINEER  
 J. D. PARKHURST, CHIEF ENGINEER  
 CO. SANITARY DISTRICT NO. 8  
 APPROVED BY *James A. ...* 5/1/72  
 OFFICE ENGINEER

APPROVED BY *James A. ...* 7/15/72  
 REGIONAL ENGINEER  
 CHECKED BY *James A. ...* 7/15/72  
 REG. C.E. NO. 276742

43385

I. N. 0250.02



**P.C. 8763 PAGE 2**  
**NO CHARGE FOR CONNECTIONS**

43386