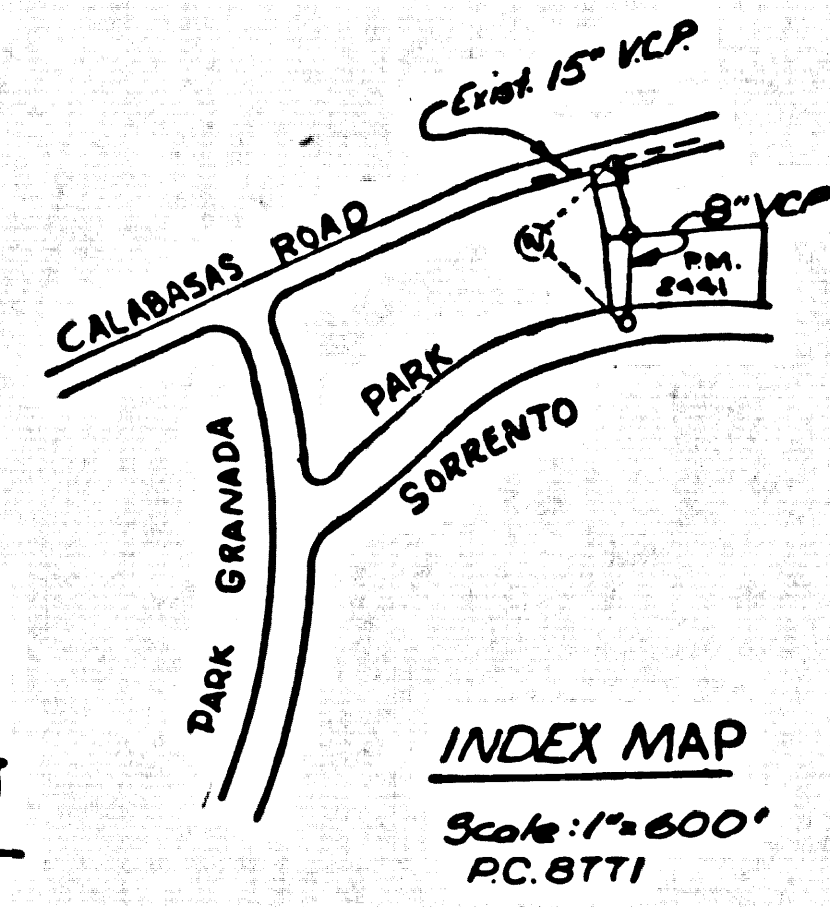


B.M. # BY 7537 ELEV. 922.787 (1965 adj.)
 L & SCREW N.E. CORD CATCH BASIN ON S.W.
 COR. MULHOLLAND DR. & CALABASAS RD.
 TO FT. SOUTH & 20 FT. WEST & N.T.M.K.D.(S.M.)
 MALIBU QUAD. 19 62.

THE FOLLOWING COUNTY ENGINEER STANDARD
 PLANS APPLY TO THIS PROJECT:

LEGEND	5-1
MINIMUM PUBLIC SAFETY REQUIREMENTS	5-2
BRICK MANHOLE	5-3
REINFORCED PRE-CAST CONC. MANHOLE	5-3a
LOCKING MANHOLE FRAME & COVER	5-3b
STANDARD MANHOLE SIEP	5-7
BEDDING FOR SEWER PIPE	5-21
CRADDLING AND ENCASEMENT	5-23
WYE AND TEE SUPPORT	5-22
WYE SADDLE-HOUSE LATERAL	5-29
ALLOWABLE TRENCH WIDTHS	5-33
CHIMNEY PIPE AND BASE	5-27

NOTE:
 FULL COMPLIANCE WITH SECTION 306-1.9.3 OF THE SPECIAL
 PROVISIONS WILL BE REQUIRED FOR BACKFILL IN STREETS.
 CERTIFICATION OF BACKFILL COMPACTION AND SAND
 EQUIVALENTS BY A QUALIFIED REGISTERED TESTING
 LABORATORY, SHALL BE PROVIDED BY THE PERMITTEE
 PRIOR TO THE ISSUANCE OF A CERTIFICATE OF
 PARTIAL ACCEPTANCE.



DOUBLE SCALE
 CALABASAS BLDG. DIST. NO. 9.1

PROFILE ALIGNMENT AND GRADE OF
 SANITARY SEWERS PAGE 1
 TO BE CONSTRUCTED IN

PARCEL MAP NO. 2441
 PRIVATE CONTRACT NO. 8771

W.S. 60
 1 SHEETS, 2 PAGES
 SCALE: VERT. 1"=4'
 HORIZ. 1"=40'
 1972
 PREPARED IN THE OFFICES OF
 VTN Los Angeles
 5910 VAN NUYS BLVD. VAN NUYS, CALIF.
 BY: *D. Allan Cooper* 5-2-72
 REG. C.E. NO. 16,685
 FOR LEGEND SEE PLAN NO. S-1

- NOTES:
- PROVIDE STAKES ON THE PROPERTY LINE OR PROPERTY LINES PRODUCED AT RIGHT ANGLES TO THE SEWER LINE AT THE CENTER LINE OF EACH MANHOLE.
 - NO REPRESENTATIVE OF THE COUNTY ENGINEER WILL SURVEY OR LAY OUT ANY PORTION OF THE WORK.
 - THE PRIVATE ENGINEER SHALL FURNISH THE COUNTY ENGINEER WITH GRADE SHEETS AND STATIONING FOR ALL HOUSE LATERALS AND "T" OR "Y" BRANCHES AND SHALL PROVIDE STAKES FOR THEM AT THEIR PROPOSED LOCATIONS WITH STATIONING PLAINLY MARKED. ALL HOUSE LATERALS SHALL BE CONSTRUCTED IN A STANDARD ALIGNMENT AT RIGHT ANGLES FROM THE MAIN LINE SEWER EXCEPT AS SHOWN ON THE PLANS. HOUSE LATERALS FROM CHIMNEYS SHALL NOT HAVE AN ANGLE OF LESS THAN 45° WITH THE MAIN LINE SEWER. ANY CHANGE IN ALIGNMENT SHALL BE REQUESTED IN WRITING BY THE PRIVATE ENGINEER.
 - THE PRIVATE ENGINEER SHALL FURNISH THE HOUSE LATERAL DEPTH AT THE PROPERTY LINE BELOW THE TOP OF CURB ELEVATION FOR EACH HOUSE LATERAL ON THE GRADE SHEET.
 - NO CHANGES SHALL BE MADE IN THESE PLANS WITHOUT THE APPROVAL OF THE COUNTY ENGINEER.
 - THE CONTRACTOR SHALL NOTIFY THE CONSTRUCTION DIVISION BY TELEPHONE, RADIOSH 9-0747, EXT. 8150, AT LEAST TWENTY-FOUR HOURS BEFORE STARTING ANY WORK UNDER THIS CONTRACT.
 - MANHOLES SHALL BE BRICK SEWER STRUCTURES PER S.S. PRECAST CONCRETE MANHOLES PER S-36, EXCEPT AS NOTED. ALL OTHER MANHOLES SHALL BE APPROVED BY THE COUNTY ENGINEER.
 - ALL JOINTS BETWEEN CURB AND HOUSE LATERAL SHALL BE MADE WITH A RUBBER SLEEVE JOINT TYPE "C" OR "D" WITH BUSHING IF NECESSARY PER STD. SPECS. SEC. 508-8.
 - MANHOLE TOPS IN IMPROVED AREAS SHALL BE TO FINISHED GRADE, UNLESS OTHERWISE NOTED.
 - USE EXTRA STRENGTH PIPE, ALL WYE & STANDARD WYTES EXCEPT AS NOTED.
 - REINFORCED GLASS FIBER SHALL BE TYPE "R", "T" OR "S" PER STD. SPECS. SEC. 508-8.
 - IF A POWER POLE IS WITHIN THREE FEET OF THE SEWER, THE SEWER SHALL BE ENCASED, PER S-23, TWO FEET ON EACH SIDE FROM THE POINT OF INTERFERENCE.
 - IF DURING THE COURSE OF CONSTRUCTION IT IS DETERMINED THAT THERE IS LESS THAN FOUR FEET OF COVER OVER THE TOP OF A MAIN LINE OR HOUSE LATERAL V.C.P. SEWER WHICH IS NOT INDICATED ON THE PLANS, THE PIPE SHALL BE ENCASED PER S-23, UNLESS OTHERWISE APPROVED BY THE COUNTY ENGINEER.
 - HOUSE LATERALS TO BE CONSTRUCTED WITH INVERTS AT PROPERTY LINE 4 FEET BELOW CURB GRADE EXCEPT AS NOTED.
 - RESURFACE ALL TRENCHES WITHIN PAVED AREAS TO MEET L.A. COUNTY ROAD DEPT. OR CALIFORNIA STATE HIGHWAY REQUIREMENTS IN ACCORDANCE WITH PERMITS.
 - GRADE TO BE AN PRESSURE TRENCH FOR LEAKAGE PER SEC. 506-8, S.T.C. OF STD. SPECS. IF SPECIAL PROVISIONS.
 - "T" OR "Y" BRANCHES NOT BE USED FOR CONNECTIONS TO MANHOLES EXCEPT AS NOTED.
 - REFER TO SECTION 7-10.4.1 OF THE STANDARD SPECS. REGARDING SAFETY ORDERS.
 - SPECIAL BACKFILL IN DESHATED AREAS:
 - A: BACKFILL TRENCH & SERVICE CHIMNEY BATHS SHOULD BE SO AS TO MAINTAIN THE NATURAL OR FINISHED GRADE & SLOPE SHOWN ON THE SEWER PLAN APPROVED BY BUILDING & SAFETY DIVISION FOR THE TRACT.
 - B: ALL BACKFILL & EARTH REPAIRED SHALL BE COMPACTED TO A MINIMUM OF 90% OF MAXIMUM DENSITY OF THE ASTM STD. METHOD OF TEST D-1557-57 AS MODIFIED. ACCEPTABLE CERTIFICATION OF SUCH CONSTRUCTION SHALL BE SUBMITTED TO THE CONSTRUCTION DIVISION.
 - ALL CONSTRUCTION SHALL BE DONE IN ACCORDANCE WITH THE CALIF. STATE DEPT. OF INDUSTRIAL RELATIONS, INDUSTRIAL SAFETY DIVISION.

NOTE:
 GRADES TO WHICH THIS IMPROVEMENT IS TO BE CONSTRUCTED ARE SHOWN ON PLANS AND PROFILE. GRADE POINTS FOR TOP OF CURB, CENTER LINE OF STREETS, OR CENTER LINE OF ALLEYS ARE SHOWN BY CIRCLES ON PROFILES. AT ALL POINTS BETWEEN DESIGNATED POINTS THE GRADE SHALL BE ESTABLISHED SO AS TO CONFORM TO A STRAIGHT LINE BETWEEN SAID DESIGNATED POINTS. ELEVATIONS ARE IN FEET ABOVE U.S.C. & G.S. MEAN SEA LEVEL DATUM OF 1929.
 WORK SHALL BE CONSTRUCTED ACCORDING TO THE STANDARD SPECIFICATIONS FOR PUBLIC WORKS CONSTRUCTION (1972 EDITION) WITH SUPPLEMENTAL AND COUNTY TOLERANCE SPECIAL PROVISIONS FOR THE CONSTRUCTION OF SANITARY SEWERS PER PLAN 8771. THIS SHALL BE PROVIDED BY THE COUNTY ENGINEER.
 BEFORE WORK CAN BE STARTED, THE CONTRACTOR MUST OBTAIN A PERMIT TO EXCAVATE IN COUNTY STREETS FROM THE L.A. COUNTY ROAD DEPT., DISTRICT OFFICE NO. 8, AND OBTAIN A PERMIT TO EXCAVATE IN COUNTY STREETS FROM THE L.A. COUNTY ROAD DEPT., DISTRICT OFFICE NO. 8, MALIBU REGIONAL OFFICE, SUFFICIENT TO COVER THE COST OF CONSTRUCTION INSPECTION AND RECORD PLANS.
 APPROVAL OF THIS PLAN BY THE COUNTY OF LOS ANGELES DOES NOT CONSTITUTE A REPRESENTATION AS TO THE ACCURACY OF THE LOCATION OF OR THE EXISTENCE OR NON-EXISTENCE OF ANY UNDERGROUND UTILITY PIPE, OR STRUCTURE WITHIN THE LIMITS OF THIS PROJECT. THIS NOTE APPLIES TO ALL PAGES.
 IF WORK IS TO BE DONE IN A STATE HIGHWAY, A PERMIT MUST BE OBTAINED FROM THE STATE OF CALIFORNIA, DIVISION OF HIGHWAYS, 126 SOUTH SPRING STREET, LOS ANGELES, CALIFORNIA.

COUNTY OF LOS ANGELES, CALIFORNIA
 HARVEY T. BRANDT, COUNTY ENGINEER LAS VEGAS MUNICIPAL WATER DISTRICT
 APPROVED BY: *Samuel Decker* 2/14/72 REGIONAL ENGINEER DATE
 APPROVED BY: *John Stiles* COUNTY MANAGER-CHIEF ENGINEER

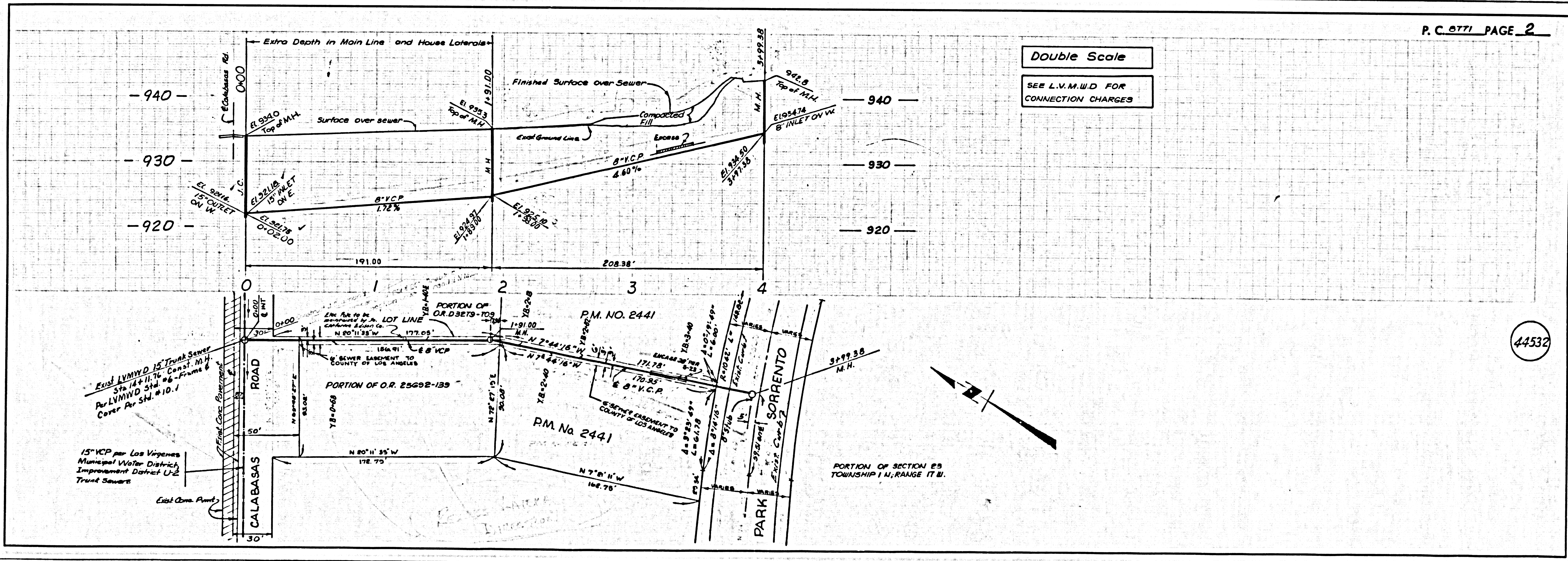
SKETCHED BY: [Signature]
 CHECKED BY: *Alan [Signature]* 2/15/72
 REG. C.E. NO. 16,685
 44531

REVISION NO. 1 2-22-74
 RELOCATE SANITARY SEWER EASEMENT AND MAIN LINE SEWER FROM STR. 11-98.16 TO STR. 3-99.53
 APPROVED *Sheldon Jones* R.E. #19169

COLLECT CHARGES
 AS INDICATED

NOTICE TO CONTRACTOR
 The existence and location of any underground utility pipes or structures shown on these plans are obtained by a search of the available records. To the best of my knowledge there are no existing utilities except as shown on these plans. The contractor is required to take due precautionary measures to protect the utility lines shown and any other lines not of record or not shown on these plans.
D. Allan Cooper R.E. #16,685

J.N.0250.05



Double Scale
 SEE L.V.M.W.D. FOR CONNECTION CHARGES

P.C. 8771 PAGE 2

44532