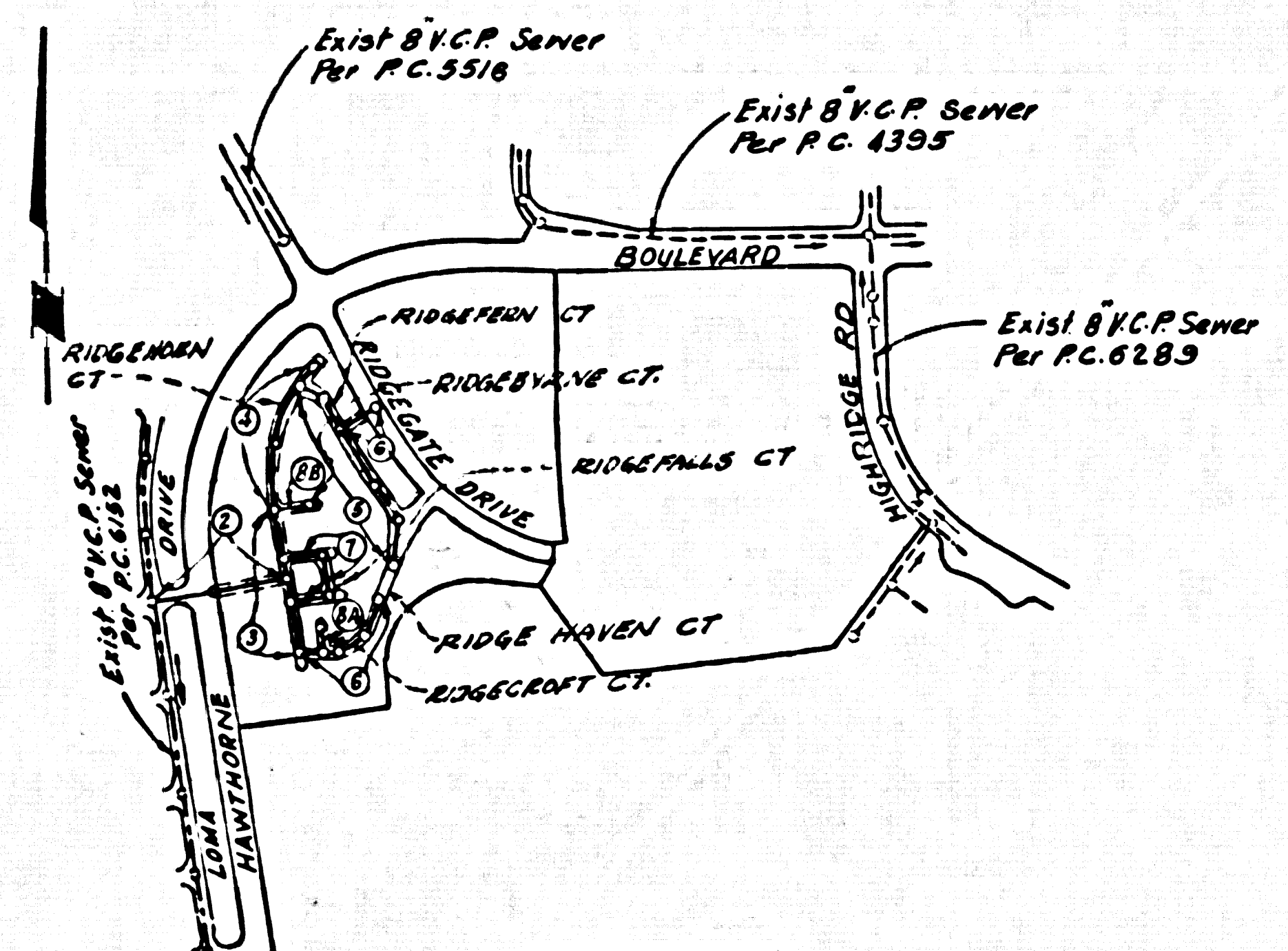


TO BE CONSTRUCTED IN
TRACT NO. 30166
PRIVATE CONTRACT NO. 8774

W.S. 27
 4 SHEETS, 0 PAGES
 44022
 SCALE: VERT. 1" = 8'
 HORIZ. 1" = 40'
 JUNE, 1972
 PREPARED IN THE OFFICES OF
SIKAND ENGINEERING ASSOCIATES
 15209 BURBANK BLVD., VAN NUYS, CALIF 91411
 BY: *[Signature]*
 REG. C. E. No. 4816

B.M. BY 4374 ELEV. 1033.131
 L + SPK 40 FT N Q/L HAWTHORNE BLVD.
 180 FT. W Q/L GRAYSLAKE RD FRONT
 OF BLUE COVE SUB STA.
 Piles Merdes QUAD. 19 22



INDEX MAP.
 SCALE = 1" = 600'
 P.C. NO. 8774
 T.R. NO. 30166

REVISION
 1. Page 2. Profile revised
 2. Page 3A. Elev. of 8" Outlet on West corrected.
 3. Page 5. 8"-6" N.L. between Sta. 6+82.47 to Sta. 6+76.72 deleted for Tennis Court.
 1'-6" N.L. between Sta. 5+73.92 to Sta. 6+82.47 added for Guard House.
 Elev. at Sta. 6+76.72 corrected.
 4. Page 6A. Elev. at Sta. 2+11.73 corrected.
 5. Page 8A. 6"-4" N.L. of 8"x4" Stub deleted.
 APPROVED *[Signature]* 5-7-73
 Office of County Engineer R.C.E.

REVISION:
 1. Page 2. Adjusted F.S. over Sewer
 2. Page 3A, 6B, 7A, 7B, 7C & 8A. Adjusted Sewer Profile of 6" P.d. driveway Grade.
 3. Page 3B, 4, 5 & 8B Adjusted & Private driveway Grade.
 APPROVED *[Signature]* 5-7-73
 Office of Co. Eng. R.C.E.

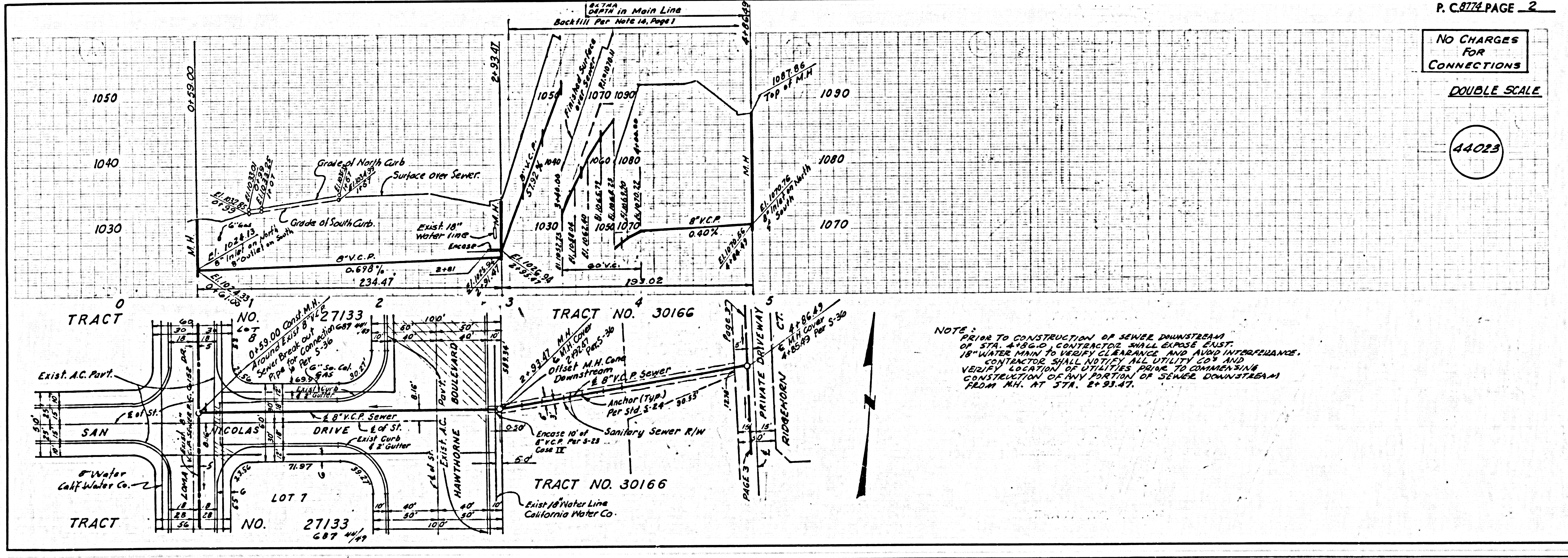
FULL COMPLIANCE WITH SECTION 306-1.8.3 OF THE SPECIAL PROVISIONS WILL BE REQUIRED FOR BACKFILL IN STREETS AND PRIVATE DRIVEWAYS. CERTIFICATION OF BACKFILL COMPACTION AND SAND EQUIVALENTS BY A QUALIFIED, REGISTERED TESTING LABORATORY SHALL BE PROVIDED BY THE PERMITTEE PRIOR TO THE ISSUANCE OF A CERTIFICATE OF PARTIAL ACCEPTANCE.

- GENERAL NOTES:**
- ELEVATIONS ARE IN FEET ABOVE U.S.C. & G.S. SEA LEVEL DATUM OF 1929.
 - NO REVISIONS SHALL BE MADE IN THESE PLANS WITHOUT THE APPROVAL OF THE COUNTY ENGINEER.
 - NO REPRESENTATIVE OF THE COUNTY ENGINEER WILL SURVEY OR LAY OUT ANY PORTION OF THE WORK.
 - GRABES TO WHICH THIS IMPROVEMENT IS TO BE CONSTRUCTED ARE SHOWN ON PLANS AND PROFILES. GRADE POINTS FOR TOP OF CURB, CENTER LINE OF STREETS, OR CENTER LINE OF ALLEYS ARE SHOWN BY CIRCLES ON PROFILES. AT ALL POINTS BETWEEN DESIGNATED POINTS THE GRADE SHALL BE ESTABLISHED SO AS TO CONFORM TO A STRAIGHT LINE BETWEEN SAID DESIGNATED POINTS.
 - THE PRIVATE ENGINEER SHALL FURNISH THE COUNTY ENGINEER WITH GRADE SHEETS AND STATIONING FOR ALL HOUSE LATERALS AND "T" OR "Y" BRANCHES AND SHALL PROVIDE STAKES FOR TIE-INS AT THEIR PROPER LOCATIONS WITH STATIONING NEAREST BRANCH. ALL HOUSE LATERALS SHALL BE CONSTRUCTED IN A STRAIGHT ALIGNMENT AT RIGHT ANGLES FROM THE MAIN LINE SEWER EXCEPT AS SHOWN ON THE PLANS. HOUSE LATERALS FROM CHIMNEYS SHALL NOT HAVE AN ANGLE OF LESS THAN 45° WITH THE MAIN LINE SEWER. ANY CHANGE IN ALIGNMENT SHALL BE REQUESTED IN WRITING BY THE PRIVATE ENGINEER.
 - THE PRIVATE ENGINEER SHALL FURNISH THE HOUSE LATERAL DRYPIPE AT THE PROPERTY LINE BELOW THE TOP OF CURB ELEVATION FOR EACH HOUSE LATERAL ON THE GRADE SHEET.
 - BEFORE WORK CAN BE STARTED, THE CONTRACTOR MUST OBTAIN A PERMIT TO EXCAVATE IN COUNTY STREETS FROM THE L.A. COUNTY ROAD DEPT., DISTRICT OFFICE NO. 2 AND PAY A FEE TO THE COUNTY ENGINEER, ROOM 78, 800 EAST IMPERIAL HWY., DOWNEY, OR *[Signature]* REGIONAL OFFICE, TO COVER THE COST OF CONSTRUCTION INSPECTION AND RECORD PLANS.
 - IF WORK IS TO BE DONE IN A STATE HIGHWAY, A PERMIT MUST BE OBTAINED FROM THE STATE OF CALIFORNIA, DIVISION OF HIGHWAYS, 120 SOUTH SHAW STREET, LOS ANGELES, CALIFORNIA.
 - APPROVAL OF THIS PLAN BY THE COUNTY OF LOS ANGELES DOES NOT CONSTITUTE A REPRESENTATION AS TO THE ACCURACY OF THE LOCATION OF OR THE EXISTENCE OR NON-EXISTENCE OF ANY UNDERGROUND UTILITY PIPE, OR STRUCTURE WITHIN THE LIMITS OF THE PROJECT. THIS NOTE APPLIES TO ALL PAGES.
 - REFER TO SECTION 3-16.1.1 OF THE STANDARD SPECIFICATIONS, REGARDING SAFETY DRESS.

County Sanitation Districts shall be notified prior to the following so that required inspection can be made (Phone 337-1025 or 638-1161):
 Connections for the disposal of industrial wastes shall be shown on these drawings without written permission from the Chief Engineer and General Manager of the County Sanitation Districts.

- CONSTRUCTION NOTES:**
- WORK SHALL BE CONSTRUCTED ACCORDING TO THE STANDARD SPECIFICATIONS FOR PUBLIC WORKS CONSTRUCTION 1970 EDITION WITH THE SUPPLEMENTS AND COUNTY ENGINEER SPECIAL PROVISIONS FOR THE CONSTRUCTION OF SANITARY SEWERS DATED APRIL, 1972, AND SHALL BE PROSECUTED ONLY IN THE PRESENCE OF THE COUNTY ENGINEER.
 - THE CONTRACTOR SHALL NOTIFY THE CONSTRUCTION DIVISION BY TELEPHONE, WASHINGTON 5-672, EXT. 8136, AT LEAST TWENTY-FOUR HOURS BEFORE STARTING ANY WORK UNDER THIS CONTRACT.
 - HOUSE LATERALS TO BE CONSTRUCTED WITH INVERTS AT PROPERTY LINE 4 FEET BELOW 2" GRADE OF DRIVEWAY.
 - WYE OR TEE BRANCHES MAY BE USED FOR CONNECTIONS TO MAINLINE SEWERS EXCEPT AS NOTED.
 - ALL STRUCTURES SHALL BE BRICK MANHOLES PER 3-1.1 OR RECAST CONCRETE MANHOLES PER 3-2.1, EXCEPT AS NOTED.
 - MOVING STAKES ON THE PROPERTY LINE OR PROPERTY LINES PRODUCED AT RIGHT ANGLES TO THE SEWER LINE AT THE CENTER LINE OF EACH MANHOLE.
 - MANHOLE TOPS IN UNIMPROVED RIGHTS OF WAY TO BE 2 INCHES ABOVE FINISHED GRADE.
 - WITHIN THE CURB LINE MANHOLES SHALL BE 24" OR 36" PER STANDARD SPECIFICATIONS SECTION 3-2.1.
 - IF A POWER POLE IS WITHIN THREE FEET OF THE SEWER, THE SEWER SHALL BE ENCASED, PER 3-2.1, CASE 2, TWO FEET ON EACH SIDE FROM THE POINT OF INTERFERENCE.
 - IF DURING THE COURSE OF CONSTRUCTION IT IS DETERMINED THAT THERE IS LESS THAN FOUR FEET OF COVER OVER THE TOP OF A MAIN LINE OR HOUSE LATERAL V.C.P. SEWER WHICH IS NOT INDICATED ON THE PLANS, THE PIPE SHALL BE ENCASED PER 3-2.1, CASE 2 UNLESS OTHERWISE APPROVED BY THE COUNTY ENGINEER.
 - ALL JOINTS BETWEEN CAST IRON PIPE AND VITRIFIED CLAY PIPE SHALL BE MADE WITH A RUBBER GASKET JOINT, TYPE "C" OR "D", FIFTH EDITION IF NECESSARY PER STANDARD SPECIFICATIONS, SECTION 3-2.2.
 - SEWERS TO BE TESTED FOR LEAKAGE PER SECTION 3-2.3.2 OF THE STANDARD SPECIFICATIONS AND SPECIAL PROVISIONS.
 - REPAIRS TO ALL TRENCHES WITHIN PAVED AREAS TO MEET L.A. COUNTY ROAD DEPT. OR CALIFORNIA STATE HIGHWAY REQUIREMENTS IN ACCORDANCE WITH PERMITS.
 - SPECIAL BACKFILL IN DESIGNATED AREAS**
 (a) BACKFILL TRENCH AND REPLACE OTHER EARTH REMOVED SO AS TO ACHIEVE THE NATURAL OR FINISHED GRADES AND SLOPES SHOWN ON THE GRADE SHEET PROVIDED FOR THIS TRACT BY THE DIVISION OF SAFETY DIVISION.
 (b) ALL BACKFILL AND EARTH REPLACED SHALL BE COMPACTED TO A MINIMUM OF 90% OF MAXIMUM DENSITY PER A.S.T.M. STANDARD METHOD OF TEST D 698 57T AS MODIFIED. ACCEPTABLE CERTIFICATION OF SUCH COMPACTION SHALL BE SUBMITTED TO THE CONSTRUCTION DIVISION.

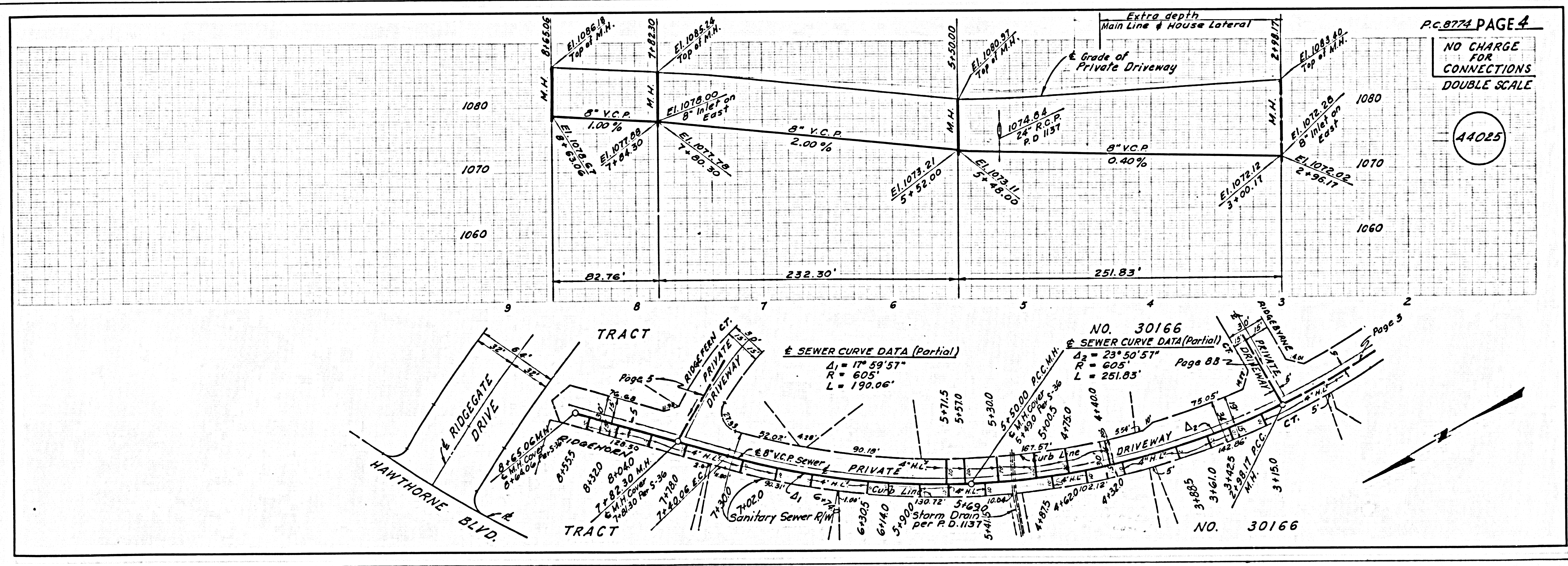
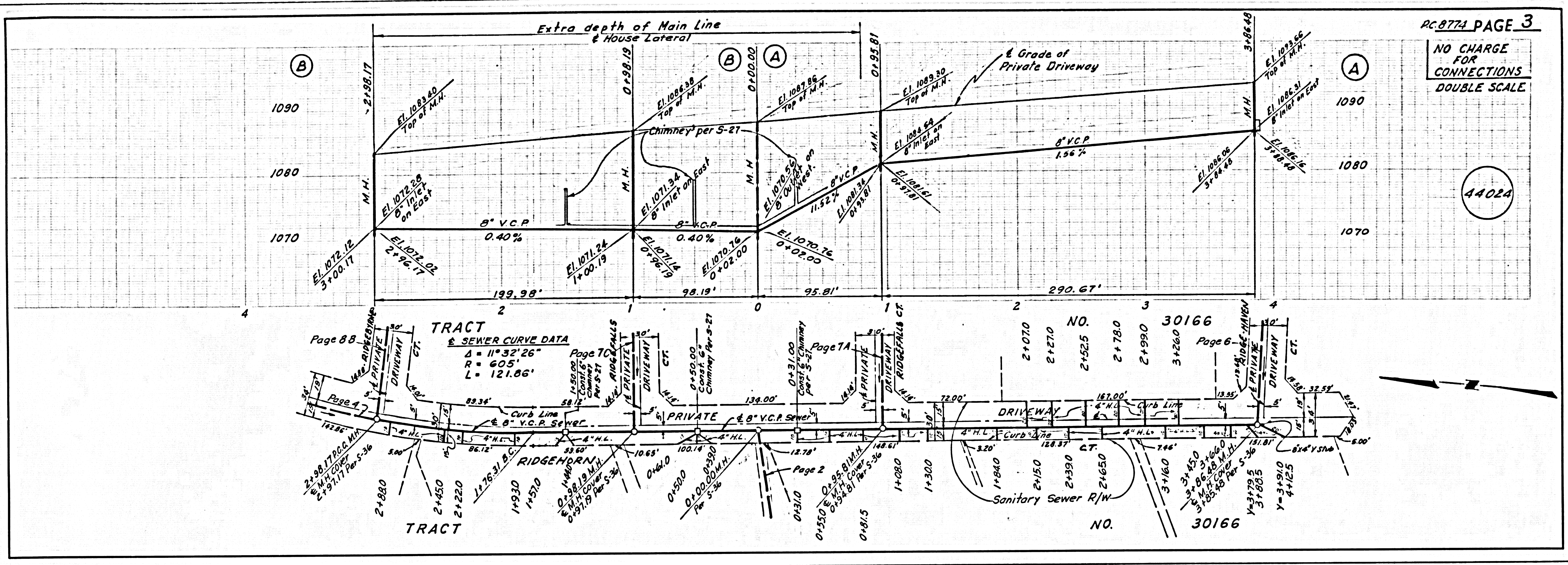
COUNTY OF LOS ANGELES, CALIFORNIA
 HARVEY T. BRANDT, COUNTY ENGINEER JOHN D. PARKHURST, CHIEF ENGINEER
 APPROVED *[Signature]* 10-27-72 APPROVED *[Signature]*
 REGIONAL ENGINEER DATE OFFICE ENGINEER
 CHECKED *[Signature]* 10-26-72
 MFG. C. NO. 15744
 LOMITA BLDG. DIST. 12 I.N. 0250,02



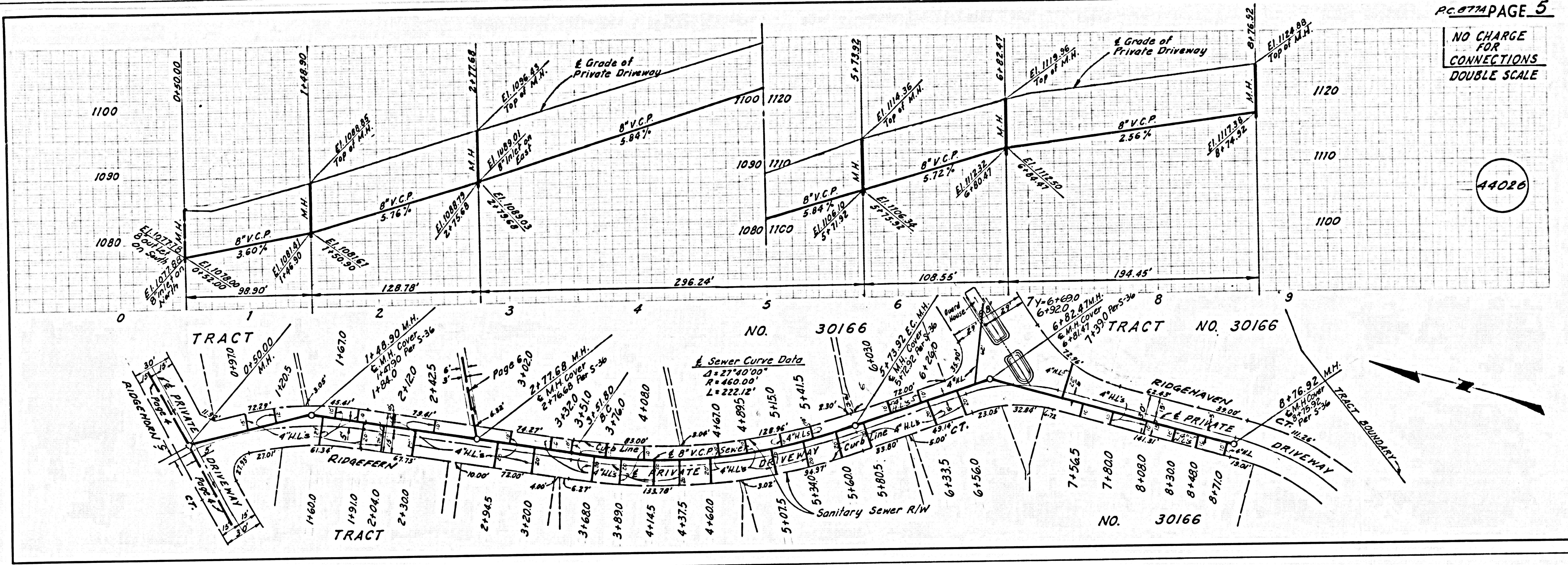
P.C. 8774 PAGE 2

NO CHARGES FOR CONNECTIONS
 DOUBLE SCALE
 44023

NOTE:
 PRIOR TO CONSTRUCTION OF SEWER DOWNSTREAM OF STA. 4+82.00 CONTRACTOR SHALL EXPOSE EXIST. 18" WATER MAIN TO VERIFY CLEARANCE AND AVOID INTERFERENCE. CONTRACTOR SHALL NOTIFY ALL UTILITY CO'S AND VERIFY LOCATION OF UTILITIES PRIOR TO COMMENCING CONSTRUCTION OF ANY PORTION OF SEWER DOWNSTREAM FROM M.H. AT STA. 2+93.47.



NO CHARGE FOR CONNECTIONS DOUBLE SCALE



NO CHARGE FOR CONNECTION DOUBLE SCALE

