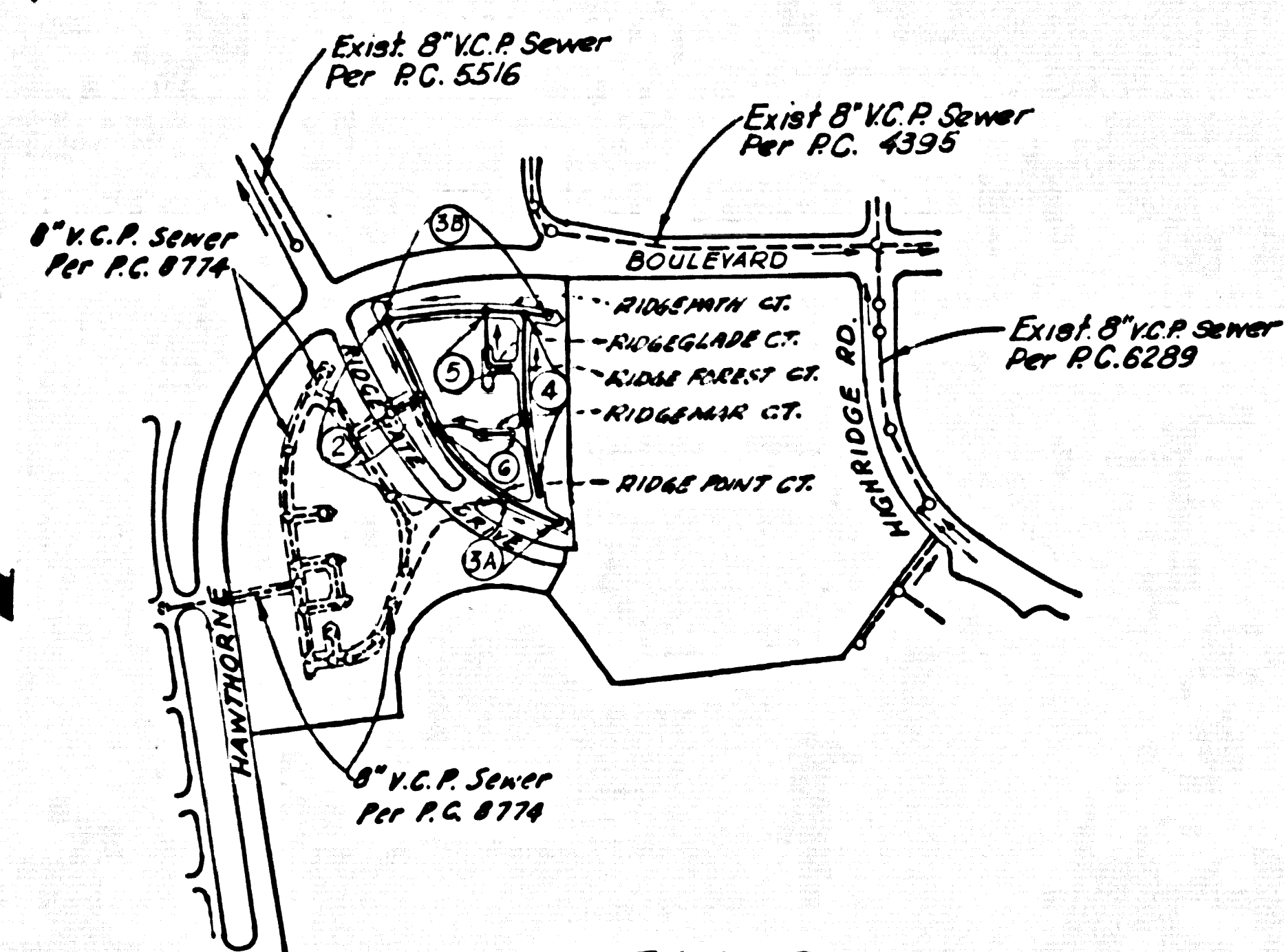


B.M. BY 4374 ELEV. 1093.131
 L + SPK 40 FT. N Q/L HAWTHORNE BLVD
 780 FT. W Q/L GRAYSLAKE RD. FRONT
 OF BLUE COVE SUB STA.
 PALOS VERDES QUAD. 19 70



INDEX MAP
 SCALE: 1"=60'
 P.C. NO. 8775
 TR. NO. 30167

REVISION:
 1. Page 2B, Added 8" V.C.P. Sewer & M.H. from Sta. 2+36.62 to 2+30.00; deleted 4" M.L. @ Sta. 2+30.00; deleted 8" x 6" stub at Sta. 2+36.62; added 3" x 4" M.L.S. between Sta. 2+36.62 & 2+30.00.
 2. Page 2C, Added 2-4 M.H. between Sta. 1+26.38 & 3+81.29 for Guard House & Pool.
 3. Page 3B, Misc. Sta. & data corrections.
 4. Page 5B, Added 8" V.C.P. Sewer & M.H. from Sta. 2+31.24 to 3+00.00; added 3" x 4" M.L. between Sta. 2+31.24 & 3+00.00; deleted 8" x 6" stub at Sta. 2+31.24.
 APPROVED: *K.C. Murphy* 10-27-72
 Office of Co. Engr. R.C.E.

REVISION:
 1. Page 2A, Adjusted Sewer Profile of F.S. over Sewer.
 2. Page 2B, Adjusted Sewer Profile of E.P.V. Driveway Grade.
 3. Page 3B, 4, 5A, 5B, Adjusted Sewer Profile & E.P.V. Driveway Grade.
 4. Page 2C, Adjusted Sewer Profile & E.P.V. Driveway Grade (Sta. 0+50 to 0+92.69).
 5. Page 2C, Adjusted E.P.V. Driveway Grade (Sta. 0+92.69 to 3+81.29).
 6. Page 3A, Adjusted Sewer Profile & E.P.V. Driveway Grade.
 7. Page 6, Adjusted F.S. & E.P.V. Driveway Grade.
 APPROVED: *K.C. Murphy* 10-27-72
 Office of Co. Engr. R.C.E.

FULL COMPLIANCE WITH SECTION 306-1.8.3 OF THE SPECIAL PROVISIONS WILL BE REQUIRED FOR BACKFILL IN STREETS AND PRIVATE DRIVEWAYS. CERTIFICATION OF BACKFILL COMPACTION AND SAND EQUIVALENTS BY A QUALIFIED, REGISTERED TESTING LABORATORY SHALL BE PROVIDED BY THE PERMITTEE PRIOR TO THE ISSUANCE OF A CERTIFICATE OF PARTIAL ACCEPTANCE.

GENERAL NOTES:
 1. ELEVATIONS ARE IN FEET ABOVE U.S.C. & G.S. MEAN DATUM OF 1929.
 2. NO REVISIONS SHALL BE MADE IN THESE PLANS WITHOUT THE APPROVAL OF THE COUNTY ENGINEER.
 3. NO REPRESENTATIVE OF THE COUNTY ENGINEER WILL SURVEY OR LAY OUT ANY PORTION OF THE WORK.
 4. GRADES TO WHICH THIS IMPROVEMENT IS TO BE CONSTRUCTED ARE SHOWN ON PLANS AND PROFILES. GRADE POINTS FOR TOP OF CURBS, CENTER LINE OF STREETS, OR CENTER LINE OF ALLEYS ARE SHOWN BY CIRCLES ON PROFILES. AT ALL POINTS BETWEEN DESIGNATED POINTS THE GRADE SHALL BE ESTABLISHED TO A STRAIGHT LINE BETWEEN SAID DESIGNATED POINTS.
 5. THE PRIVATE ENGINEER SHALL FURNISH THE COUNTY ENGINEER WITH GRADE SHEETS AND STATIONING FOR ALL HOUSE LATERALS AND "Y" OR "T" BRANCHES AND SHALL INDUCE GRADES FOR TRENCH AT THEIR PROPER LOCATIONS WITH STATIONING AS UNLESS MARKED. ALL HOUSE LATERALS SHALL BE CONSTRUCTED AT RIGHT ANGLES FROM THE MAIN LINE SEWER EXCEPT AS SHOWN ON THE PLANS. HOUSE LATERALS FROM CHIMNEYS SHALL NOT HAVE AN ANGLE OF LESS THAN 45° WITH THE MAIN LINE SEWER. ANY CHANGE IN ALIGNMENT SHALL BE REQUESTED IN WRITING BY THE PRIVATE ENGINEER.
 6. THE PRIVATE ENGINEER SHALL FURNISH THE HOUSE LATERAL DEPTH AT THE PROPERTY LINE BELOW THE TOP OF CURB ELEVATION FOR EACH HOUSE LATERAL ON THE GRADE SHEET.
 7. BEFORE WORK CAN BE STARTED, THE CONTRACTOR MUST OBTAIN A PERMIT TO EXCAVATE IN COUNTY STREETS FROM THE L.A. COUNTY ROAD DEPT., DISTRICT OFFICE NO. 9, 440 N. W. 1ST ST. TO THE COUNTY ENGINEER, ROOM F-9, 850 EAST IMPERIAL HWY., DONNER, DR., PALOS VERDES SENTINELA VALLEY REGIONAL OFFICE, TO COVER THE COST OF CONSTRUCTION INSPECTION AND RECORD PLANS.
 8. IF WORK IS TO BE DONE IN A STATE HIGHWAY, A PERMIT MUST BE OBTAINED FROM THE STATE OF CALIFORNIA, DIVISION OF HIGHWAYS, 128 SOUTH SPRING STREET, LOS ANGELES, CALIFORNIA.
 9. APPROVAL OF THIS PLAN BY THE COUNTY OF LOS ANGELES DOES NOT CONSTITUTE A REPRESENTATION AS TO THE ACCURACY OF THE LOCATION OR OF THE EXISTENCE OR NON-EXISTENCE OF ANY UNDERGROUND UTILITY PIPE, OR STRUCTURE WITHIN THE LIMITS OF THIS PROJECT. THE NOTE APPLIES TO ALL PAGES.
 10. REFER TO SECTION 7-18.4.1 OF THE STANDARD SPECIFICATIONS, REGARDING SAFETY ORDERS.
 County Sanitation Districts shall be notified prior to the following so that they may be made aware of the location of the project. No connections for the disposal of industrial wastes shall be made to sewers without written permission from the Chief Engineer and General Manager of the County Sanitation Districts.

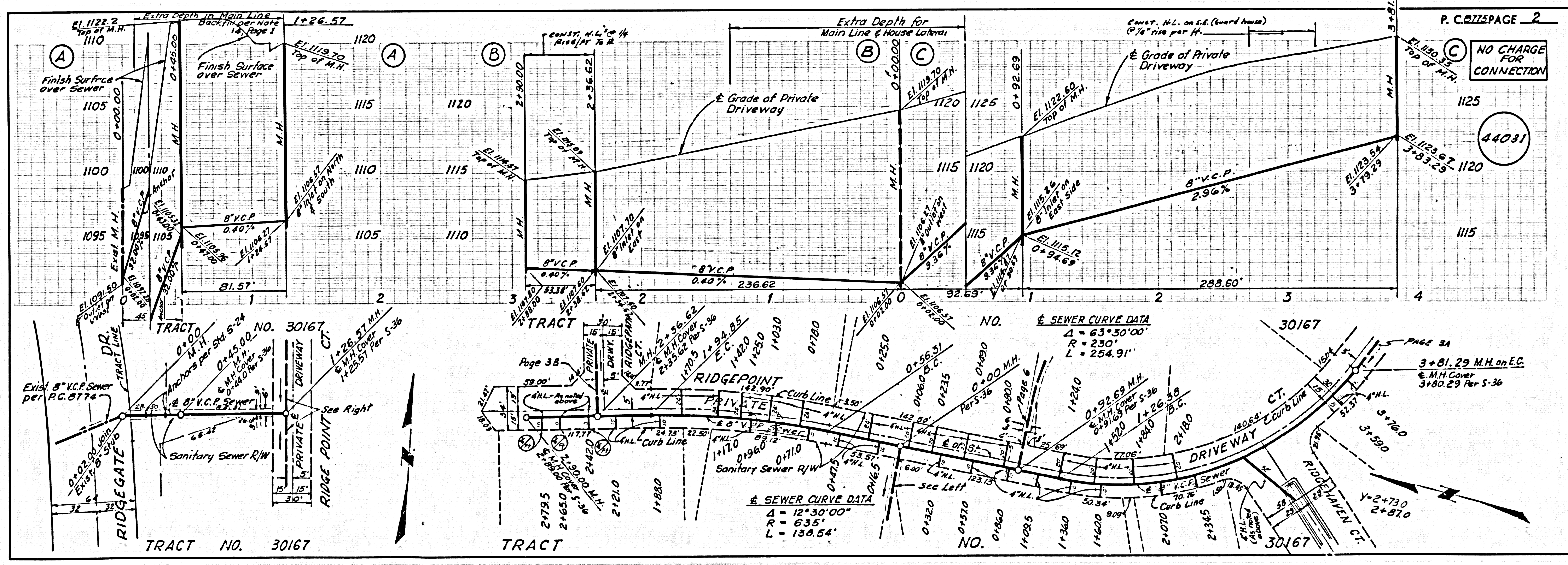
CONSTRUCTION NOTES:
 1. WORK SHALL BE CONSTRUCTED ACCORDING TO THE STANDARD SPECIFICATIONS FOR PUBLIC WORKS CONSTRUCTION (1972 EDITION) WITH 7-18 SUPPLEMENTS AND COUNTY ENGINEER SPECIAL PROVISIONS FOR THE CONSTRUCTION OF SANITARY SEWERS DATED APRIL 12, 1972 AND SHALL BE INSTALLED ONLY IN THE PRESENCE OF THE COUNTY ENGINEER.
 2. THE CONTRACTOR SHALL NOTIFY THE CONSTRUCTION DIVISION BY TELEPHONE, BLDG. DIV. 4-27, EXT. 8138, AT LEAST TWENTY-FOUR HOURS BEFORE STARTING ANY WORK UNDER THIS CONTRACT.
 3. HOUSE LATERALS TO BE CONSTRUCTED WITH INVERTS AT PROPERTY LINE A FEET BELOW GRADE OF DRIVEWAY.
 4. USE OF THE BRANCHES MAY BE USED FOR CONNECTIONS TO MAINLINE SEWERS EXCEPT AS NOTED.
 5. ALL STRUCTURES SHALL BE EITHER BRICK MANHOLES PER S-3 OR PRECAST CONCRETE MANHOLES PER S-24, EXCEPT AS NOTED.
 6. PROVIDE STAKES ON THE PROPERTY LINE OR PROPERTY LINES PRODUCED AT RIGHT ANGLES TO THE SEWER LINE AT THE CENTER LINE OF EACH MANHOLE.
 7. MANHOLES TOPS IN UNIMPROVED AREAS OF WAYS TO BE SIX FEET ABOVE FINISH GRADE.
 8. VITRIFIED CLAY PIPE JOINTS SHALL BE TYPE "B", "F", OR "G" PER STANDARD SPECIFICATIONS SECTION 306-2.
 9. IF A POWER POLE IS WITHIN THREE FEET OF THE SEWER, THE SEWER SHALL BE ENCASED, PER S-25, CASE II, TWO FEET ON EACH SIDE FROM THE POINT OF INTERFERENCE.
 10. IF DURING THE COURSE OF CONSTRUCTION IT IS DETERMINED THAT THERE IS LESS THAN FOUR FEET OF COVER OVER THE TOP OF A MAIN LINE OR HOUSE LATERAL V.C.P. SEWER WHICH IS NOT INDICATED ON THE PLANS, THE PIPE SHALL BE ENCASED PER S-25, CASE II UNLESS OTHERWISE APPROVED BY THE COUNTY ENGINEER.
 11. ALL JOINTS BETWEEN CAST IRON PIPE AND VITRIFIED CLAY PIPE SHALL BE MADE WITH A RUBBER SLEEVE JOINT, TYPE "C" OR "D", WITH BUSHING IF NECESSARY PER STANDARD SPECIFICATIONS, SECTION 306-2.
 12. SEWERS TO BE TESTED FOR LEAKAGE PER SECTION 306-2.2 OF THE STANDARD SPECIFICATIONS AND SPECIAL PROVISIONS.
 13. RESURFACE ALL TRENCHES WITHIN PAVED AREAS TO MEET L.A. COUNTY ROAD DEPT. OR CALIFORNIA STATE HIGHWAY REQUIREMENTS IN ACCORDANCE WITH PERMITS.
 14. SPECIAL BACKFILL IN DESIGNATED AREAS
 (a) BACKFILL TRENCH AND REPLACE OTHER EARTH REMOVED SOAS TO ACHIEVE THE NATURAL OR FINISHED GRADES AND SLOPES SHOWN ON THE GRADING PLAN APPROVED FOR THIS TRACT BY THE BUILDING & SAFETY DIVISION.
 (b) ALL BACKFILL AND EARTH REPLACED SHALL BE COMPACTED TO A MINIMUM OF 90% OF MAXIMUM DENSITY PER A S.T.M. STANDARD METHOD OF TEST D593-57 AS MODIFIED ACCORDING TO SUCH CONSTRUCTION SHALL BE SUBMITTED TO THE CONSTRUCTION DIVISION.

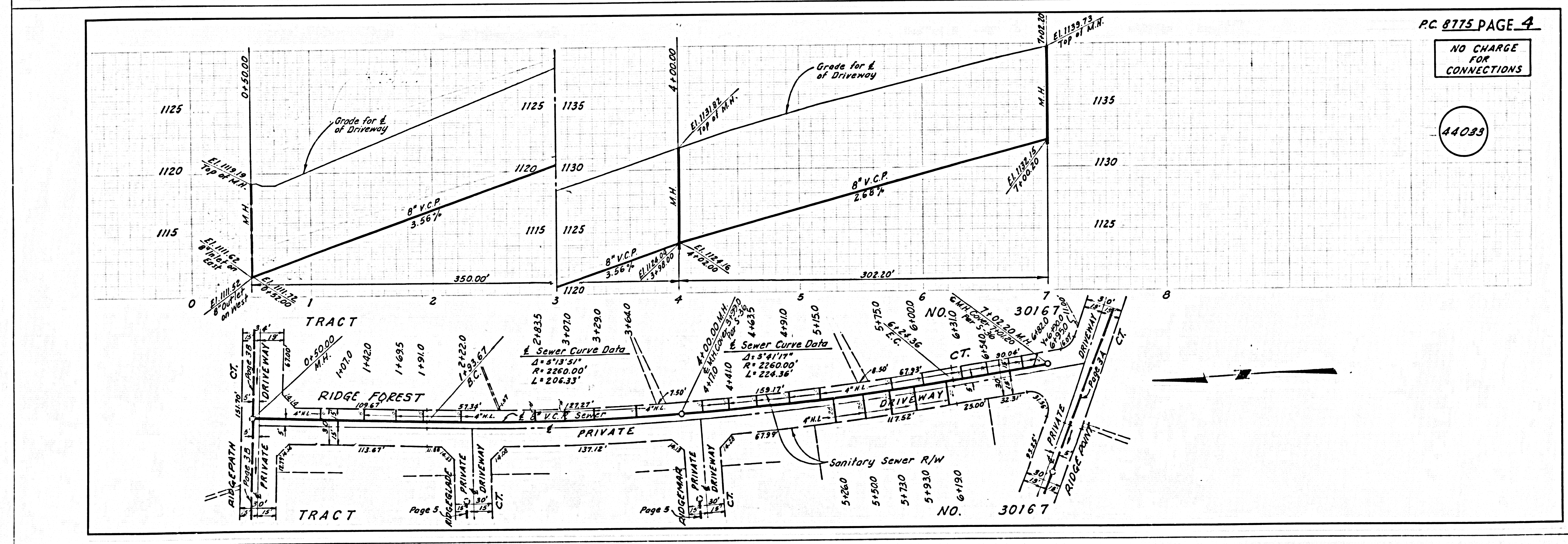
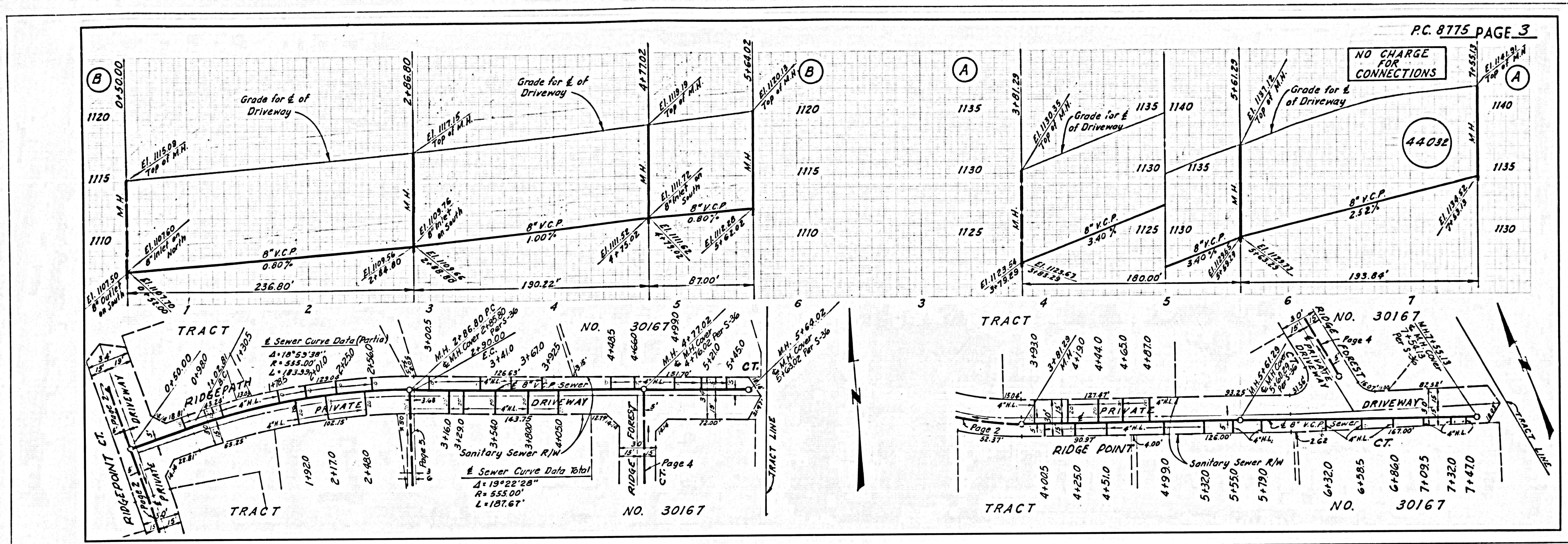
PROFILE, ALIGNMENT AND GRADE OF
SANITARY SEWERS PAGE 1
 TO BE CONSTRUCTED IN
TRACT NO. 30167
PRIVATE CONTRACT NO. 8775
 W.S. 27
 3 SHEETS, 6 PAGES
 SCALE: VERT. 1"=4' HORIZ. 1"=40'
 JULY, 1972
 PREPARED IN THE OFFICES OF
 SHANNON ENGINEERING ASSOCIATES
 15225 CULVER BLVD., VAN NUYS, CALIF. 91401
 BY: *John R. New*
 REG. C.E. No. 4812

THE FOLLOWING LATEST REVISED STANDARD PLANS ON FILE IN THE OFFICE OF THE COUNTY ENGINEER SHALL APPLY IN THE CONSTRUCTION OF THIS PROJECT.

| | |
|--|------|
| LEGEND | S-1 |
| MINIMUM PUBLIC SAFETY REQUIREMENTS | S-2 |
| BRICK MANHOLE | S-3 |
| STANDARD MANHOLE STEP | S-4 |
| WORKING FOR SEWER PIPE | S-5 |
| CRACKING AND ENCASING | S-6 |
| WYE OR TEE SUPPORT | S-7 |
| ALLOWABLE TRENCH WIDTHS | S-8 |
| SOCKING MANHOLE PLANS AND COVER | S-9 |
| HIGH STRENGTH PRECAST CONCRETE MANHOLE | S-10 |
| ANCHOR BLOCKS | S-24 |

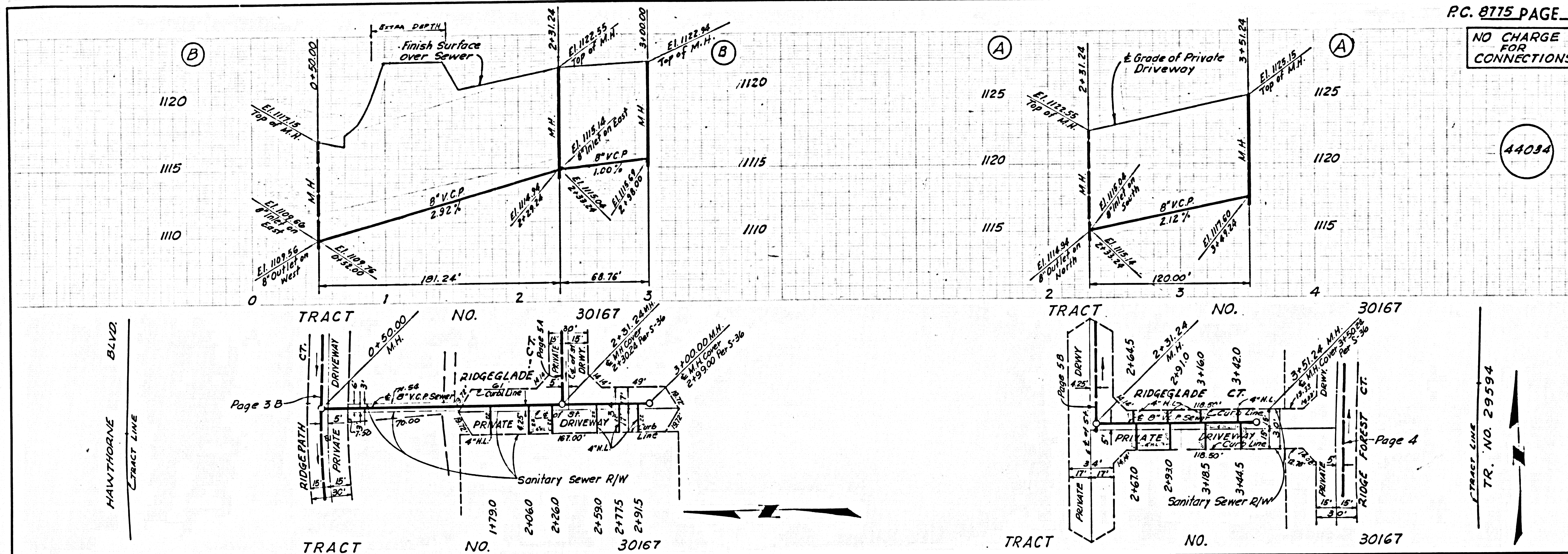
COUNTY OF LOS ANGELES, CALIFORNIA
 HARVEY T. BARNETT, COUNTY ENGINEER JOHN D. PARKHURST, CHIEF ENGINEER
 APPROVED: *Robert W. White* 10-27-72 REGIONAL ENGINEER OFFICE ENGINEER
 CHECKED: *K.C. Murphy* 10-27-72
 NO. C.E. NO. 15744
 LOMITA BLDG. DIST. 12 1 N 0250.02





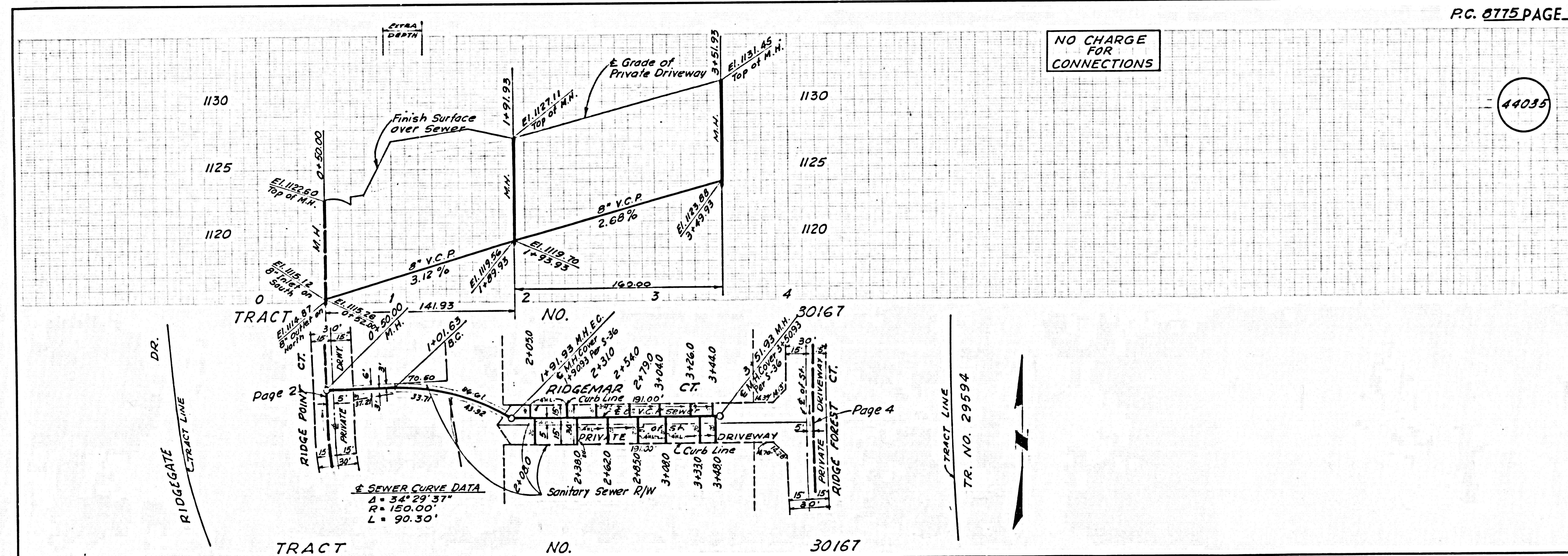
NO CHARGE FOR CONNECTIONS

44034



NO CHARGE FOR CONNECTIONS

44035



SEWER CURVE DATA
 Δ = 34° 29' 37"
 R = 150.00'
 L = 90.50'