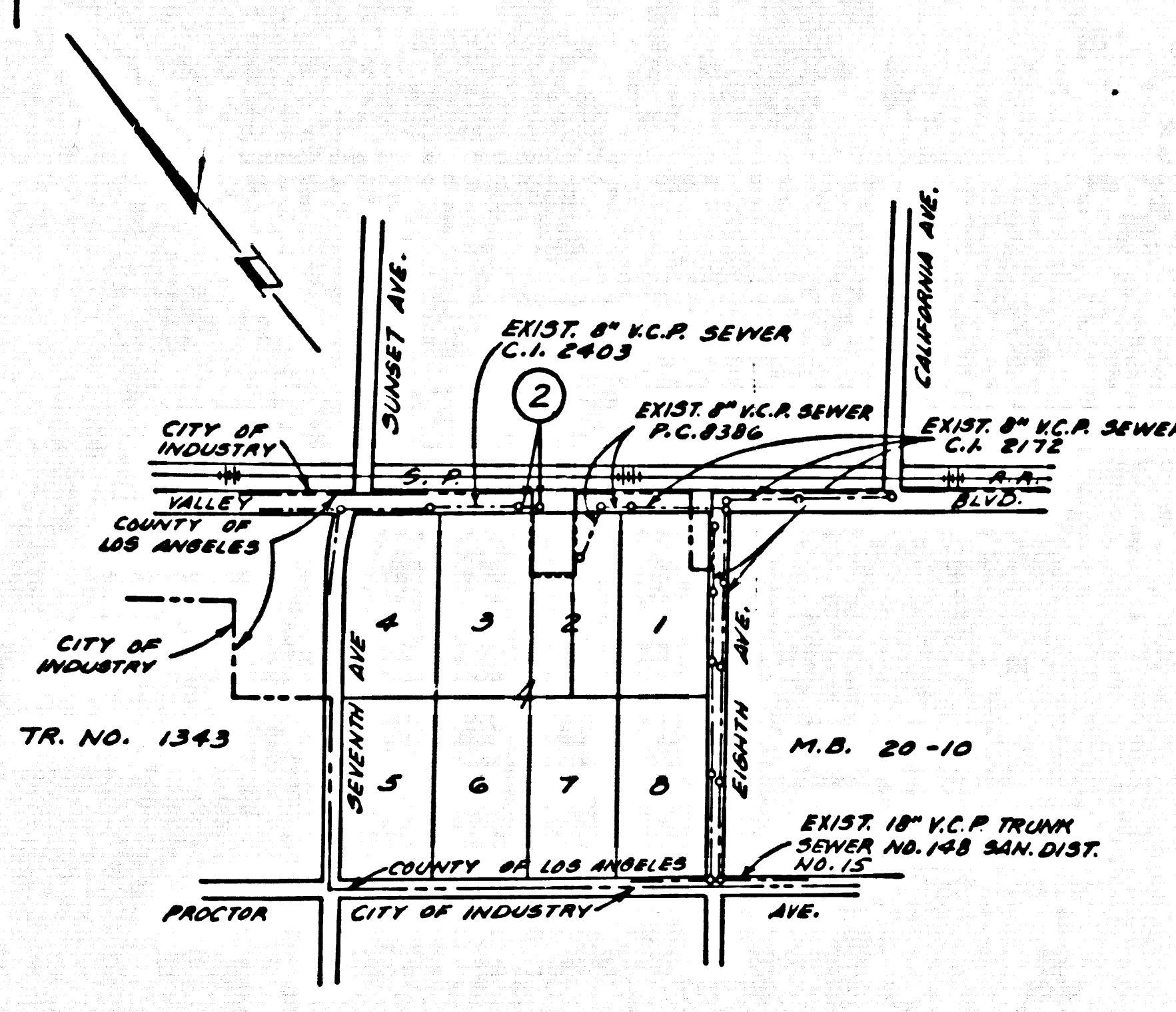


B.M. B.G. 1059 ELEV. 303.367  
 L.F.T. IN N.E. COR. CONC. HDWL. AT S.W. COR.  
 VALLEY BLVD. AND 8TH AVE., 30 FT. S., 25 FT.  
 W. OF E. INT.  
 PUENTE QUAD. 19 70



INDEX MAP  
 1" = 600'  
 P.C. 8794

THE FOLLOWING LATEST REVISED STANDARD PLANS ON FILE IN THE OFFICE OF THE COUNTY ENGINEER SHALL APPLY IN THE CONSTRUCTION OF THIS PROJECT.

- 3-1 LEGEND
- 3-2 MINIMUM PUBLIC SAFETY REQUIREMENTS
- 3-3 BRICK MANHOLE
- 3-4 STANDARD MANHOLE STEP
- 3-5 SADDLES FOR SEWER PIPES
- 3-6 CRADLINGS AND ENCASUREMENT
- 3-7 WYE OR TEE SUPPORT
- 3-8 ALLOWABLE TRENCH WIDTHS
- 3-9 LOCKING MANHOLE FRAME AND COVER
- 3-10 NON-REINFORCED PRECAST CONCRETE MANHOLE

LA PUENTE BLDG. DIST. NO. 2

PROFILE ALIGNMENT AND GRADE OF  
 SANITARY SEWERS P.C. 8794  
 TO BE CONSTRUCTED IN PAGE 1

VALLEY BLVD. EXTENSION

PRIVATE CONTRACT NO. 8794

W.S. 33 1/2  
 L SHEETS: 2 PAGES  
 DATE: OCTOBER 1972  
 PREPARED IN THE OFFICES OF  
 NATIONAL ENGINEERING CO.  
 225 N. HACIENDA BLVD.  
 CITY OF INDUSTRY, CA  
 BY: George O. Patch, 7/13/72  
 REG. C. E. NO. 12582

43696

- NOTES:
1. PROVIDE STAKES ON THE PROPERTY LINE OR PROPERTY LINES PRODUCED AT RIGHT ANGLES TO THE SEWER LINE AT THE CENTER LINE OF EACH MANHOLE.
  2. NO REPRESENTATIVE OF THE COUNTY ENGINEER WILL SURVEY OR LAY OUT ANY PORTION OF THE WORK.
  3. THE PRIVATE ENGINEER SHALL FURNISH THE COUNTY ENGINEER WITH GRADE SHEETS AND STATIONING FOR ALL HOUSE LATERALS AND ALL HOUSE LATERALS SHALL BE CONSTRUCTED IN A STRAIGHT ALIGNMENT AT RIGHT ANGLES FROM THE MAIN LINE SEWER EXCEPT AS SHOWN ON THE PLANS. HOUSE LATERALS FROM CHIMNEYS SHALL NOT HAVE AN ANGLE OF LESS THAN 45° WITH THE MAIN LINE SEWER. ANY CHANGE IN ALIGNMENT SHALL BE REQUESTED IN WRITING BY THE PRIVATE ENGINEER.
  4. THE PRIVATE ENGINEER SHALL FURNISH THE HOUSE LATERAL DEPTH AT THE PROPERTY LINE BELOW THE TOP OF CURB ELEVATION FOR EACH HOUSE LATERAL ON THE GRADE SHEET.
  5. NO REVISIONS SHALL BE MADE BY THESE PLANS WITHOUT THE APPROVAL OF THE COUNTY ENGINEER.
  6. THE CONTRACTOR SHALL NOTIFY THE CONSTRUCTION DIVISION BY TELEPHONE, MADISON 5-4747, EXT. 6188, AT LEAST TWENTY-FOUR HOURS BEFORE STARTING ANY WORK UNDER THIS CONTRACT.
  7. ALL STRUCTURES SHALL BE EITHER BRICK MANHOLES PER S-3 OR S-4, EXCEPT AS NOTED.
  8. WYE OR TEE BRANCHES MAY BE USED FOR CONNECTIONS TO MANHOLE BRANCHES EXCEPT AS NOTED.
  9. MANHOLE TOPS IN UNIMPROVED RIGHTS-OF-WAY TO BE SIX INCHES ABOVE FINISHED GRADE.
  10. ALL JOINTS BETWEEN CAST IRON PIPE AND WETTED CLAY PIPE SHALL BE MADE WITH A RUBBER SLAVE JOINT, TYPE "C" OR "D", (OTHER SURVIVE IF NECESSARY) PER STANDARD SPECIFICATIONS, SECTION 304-2.
  11. IF A POWER POLE IS WITHIN THREE FEET OF THE SEWER, THE SEWER SHALL BE ENCASED PER S-23, CASE II, TWO FEET ON EACH SIDE FROM THE POINT OF INTERFERENCE.
  12. IF DURING THE COURSE OF CONSTRUCTION IT IS DETERMINED THAT THERE IS LESS THAN FOUR FEET OF COVER OVER THE TOP OF A MAIN LINE OR HOUSE LATERAL V.C.P. SEWER WHICH IS NOT INDICATED ON THE PLANS, THE PIPE SHALL BE ENCASED PER S-23, CASE II, UNLESS OTHERWISE APPROVED BY THE COUNTY ENGINEER.
  13. HOUSE LATERALS TO BE CONSTRUCTED WITH INVERTS AT PROPERTY LINE SIX FEET BELOW CURB GRADE EXCEPT AS NOTED.
  14. RESURFACE ALL TRENCHES WITHIN PAVED AREAS TO MEET L.A. COUNTY ROAD DEPT. OR CALIFORNIA STATE HIGHWAY REQUIREMENTS IN ACCORDANCE WITH PERMITS.
  15. SEWERS TO BE TESTED FOR LEAKAGE PER SECTION 304.2.2 UNIFORM STANDARD SPECIFICATIONS AND SPECIAL PROVISIONS.
  16. REFER TO SECTION 304.2.1 OF THE STANDARD SPECIFICATIONS, REGARDING SAFETY SIGNS.
  17. WETTED CLAY PIPE JOINTS SHALL BE TYPE "B", "C", "D", OR "E" PER STANDARD SPECIFICATIONS SECTION 304-2.

County Sanitation Districts shall be notified prior to the following so that required inspection can be made (Phone 337-1025 - 638-1101)

Acceptance of this project.

No connections for the disposal of industrial wastes shall be made to sewers shown on these drawings without written permission from the Chief Engineer and General Manager of the County Sanitation Districts.

COLLECT CHARGES AS INDICATED  
 NO CHARGE FOR CONNECTION

NOTE:  
 GRADES TO WHICH THIS IMPROVEMENT IS TO BE CONSTRUCTED ARE SHOWN ON PLANS AND PROFILES. GRADE POINTS FOR TOP OF CURB, CENTER LINE OF STREET, OR CENTER LINE OF ALLEYS ARE SHOWN BY CIRCLES ON PROFILES AT ALL POINTS BETWEEN DESIGNATED POINTS. THE GRADE SHALL BE ESTABLISHED SO AS TO CONFORM TO A STRAIGHT LINE DRAWN BETWEEN SAID DESIGNATED POINTS. THIS DRAWING AND THE DATA HEREON ARE HEREBY MADE A PART OF THE SPECIFICATIONS.  
 EARTH SHALL BE CONSTRUCTED ACCORDING TO THE UNIFORM STANDARD SPECIFICATIONS FOR PUBLIC WORKS CONSTRUCTION, 1970 EDITION WITH PERMITS AND SPECIAL PROVISIONS AND COUNTY ENGINEER SPECIAL PROVISIONS PERFORMED UNDER PERMITS NO. 1971 AND SHALL BE PROSECUTED ONLY IN THE PRESENCE OF THE COUNTY ENGINEER.  
 UNLESS WORK CAN BE STARTED, THE CONTRACTOR MUST OBTAIN A PERMIT TO LOCATE AT THE COUNTY STREET FROM THE L.A. COUNTY ENGINEER, COUNTY OF LOS ANGELES, SANITATION DISTRICT, REGIONAL OFFICE, SUBMITTANT TO COVER THE COST OF CONSTRUCTION INSPECTION AND RECORD PLANS.  
 APPROVAL OF THIS PLAN BY THE COUNTY OF LOS ANGELES DOES NOT CONSTITUTE A GUARANTEE AS TO THE ACCURACY OF THE LOCATION OR OF THE EXISTENCE OR NON-EXISTENCE OF ANY UNDERGROUND UTILITY PIPE, OR OF STRUCTURE WITHIN THE LIMITS OF THIS PROJECT. THIS NOTE APPLIES TO ALL PAGES.  
 IF WORK IS TO BE DONE IN A STATE HIGHWAY, A PERMIT MUST BE OBTAINED FROM THE STATE OF CALIFORNIA, DIVISION OF HIGHWAYS, 120 SOUTH SPRING STREET, LOS ANGELES, CALIFORNIA.

COUNTY OF LOS ANGELES, CALIFORNIA  
 HARVEY K. BRADY, COUNTY ENGINEER J. D. PARKHURST, CHIEF ENGINEER  
 APPROVED BY: B. J. Norling, SANITATION DISTRICTS ENGINEER APPROVED BY: J. D. Parkhurst, CHIEF ENGINEER

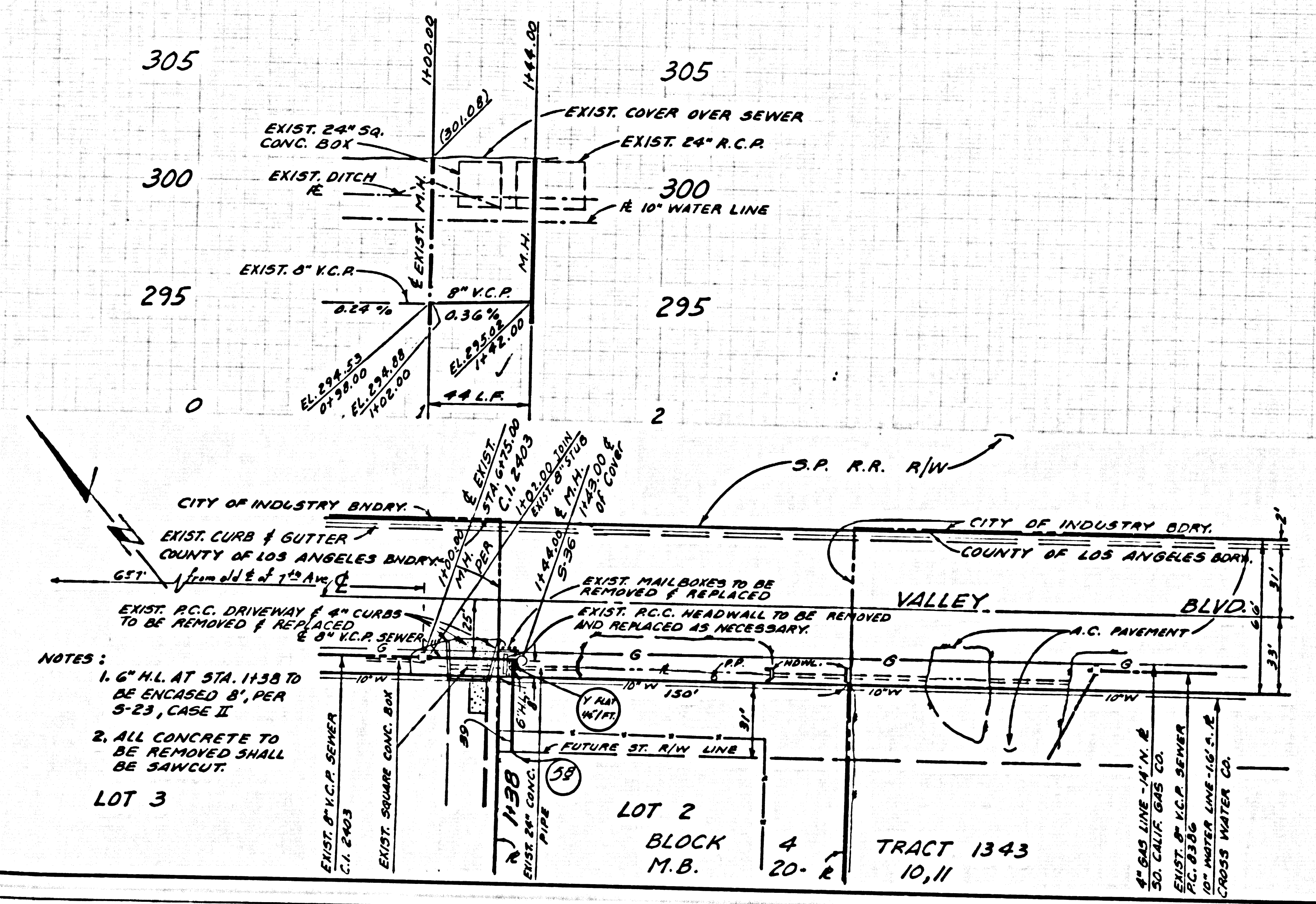
CHECKED BY: Thomas E. Howard, DATE: 10/16/72  
 NO. C.E. NO. 19156, 13 Oct 72

APPROVED BY CITY OF INDUSTRY: E. J. EPPERSON, DATE: 10-16-72  
 ELLSWORTH J. EPPERSON, CITY ENGINEER J.N. 0371.55

P.C. 8794 PAGE 2

NO CHARGE FOR CONNECTIONS

43697



- NOTES:
1. 6" M.L. AT STA. 1138 TO BE ENCASED 8" PER S-23, CASE II
  2. ALL CONCRETE TO BE REMOVED SHALL BE SAWCUT.