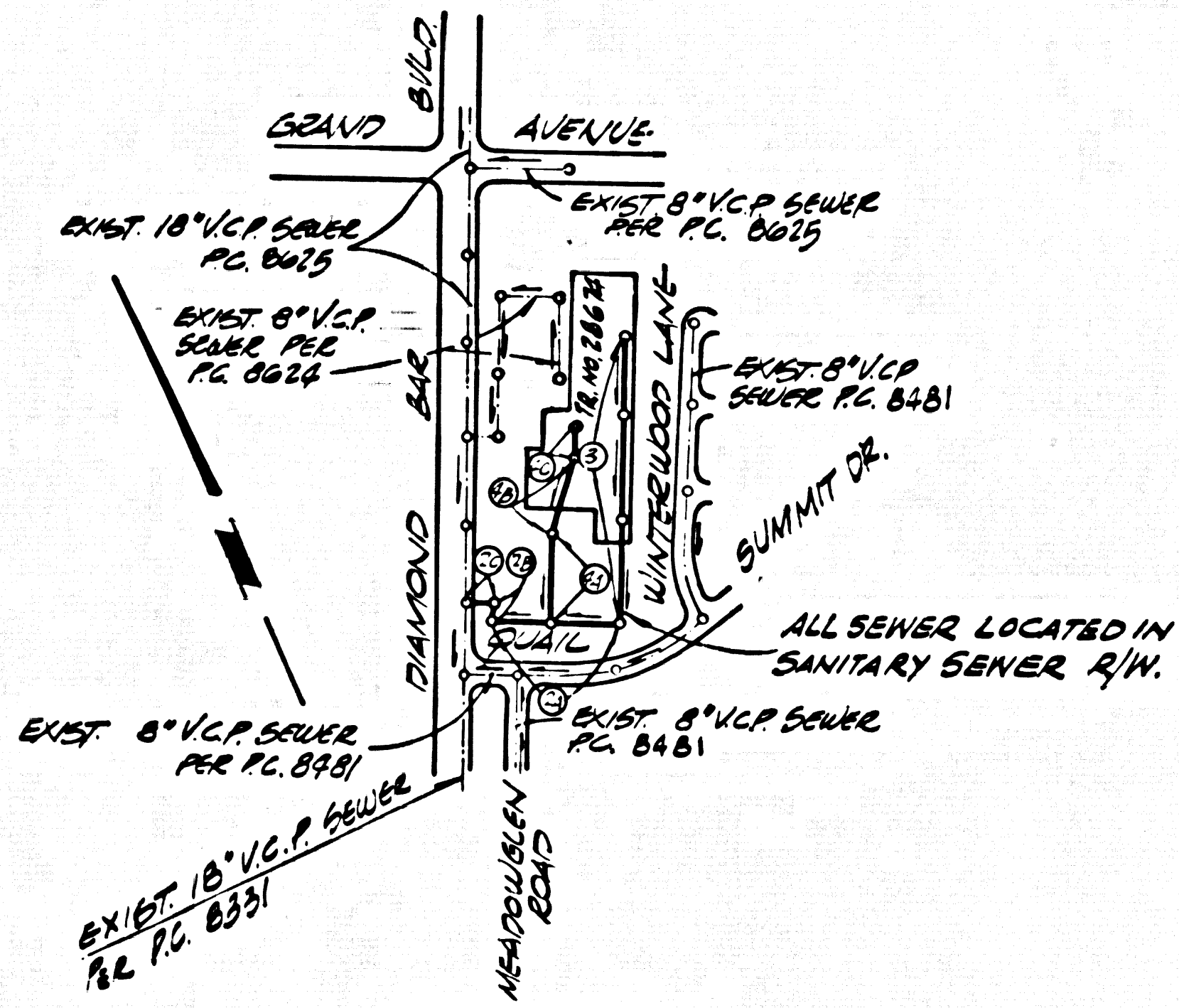


B.M. 89 39 1/2 ELEV. 895.862
 LET IN EAST END OF C.B. 43 FT. NORTH
 4 3/4 FT. WEST E. INT. GRAND AVE. AND
 CAMDEN BLDG. MID. 184C-11
 OTTERSON QUAD. 19 20



INDEX MAP
 TRACT NO. 28674
 P.C. 8795
 SCALE 1"=60'

THE FOLLOWING LATEST REVISED STANDARD PLANS ON FILE IN THE OFFICE OF THE COUNTY ENGINEER SHALL APPLY IN THE CONSTRUCTION OF THIS PROJECT

LEGEND	
MIN. PUBLIC SAFETY REQUIREMENTS	5-1
BRICK MANHOLE	5-2
NON-REINFORCED PRECAST CONCRETE MANHOLE	5-3
LOCKING MANHOLE FRAME AND COVER	5-3A
STANDARD MANHOLE STEP	5-17
BEDDING FOR SEWER PIPE	5-21
GRADING AND ENCASUREMENTS	5-23
PIPE OR TEE SUPPORT	5-24
ALLOWABLE TRENCH WIDTH	5-33

County Sanitation Districts shall be notified prior to the following so that required inspection can be made (Phone 337-1025 x 838-1181)

Approval of the project.

No connections for the disposal of industrial wastes shall be made to sewers shown on these drawings without written permission from the Chief Engineer and General Manager of the County Sanitation Districts.

ISSUE NO. HOUSE CONNECTION PERMITS UNTIL P.C. 8625 & P.C. 8331 ARE ACCEPTED BY THE LOS ANGELES COUNTY.

SAN DIMAS BLDG. DIST. NO. 10

PROFILE ALIGNMENT AND GRADE OF
 SANITARY SEWERS PAGE 1
 TO BE CONSTRUCTED IN

TRACT NO. 28674
 PRIVATE CONTRACT NO. 8795

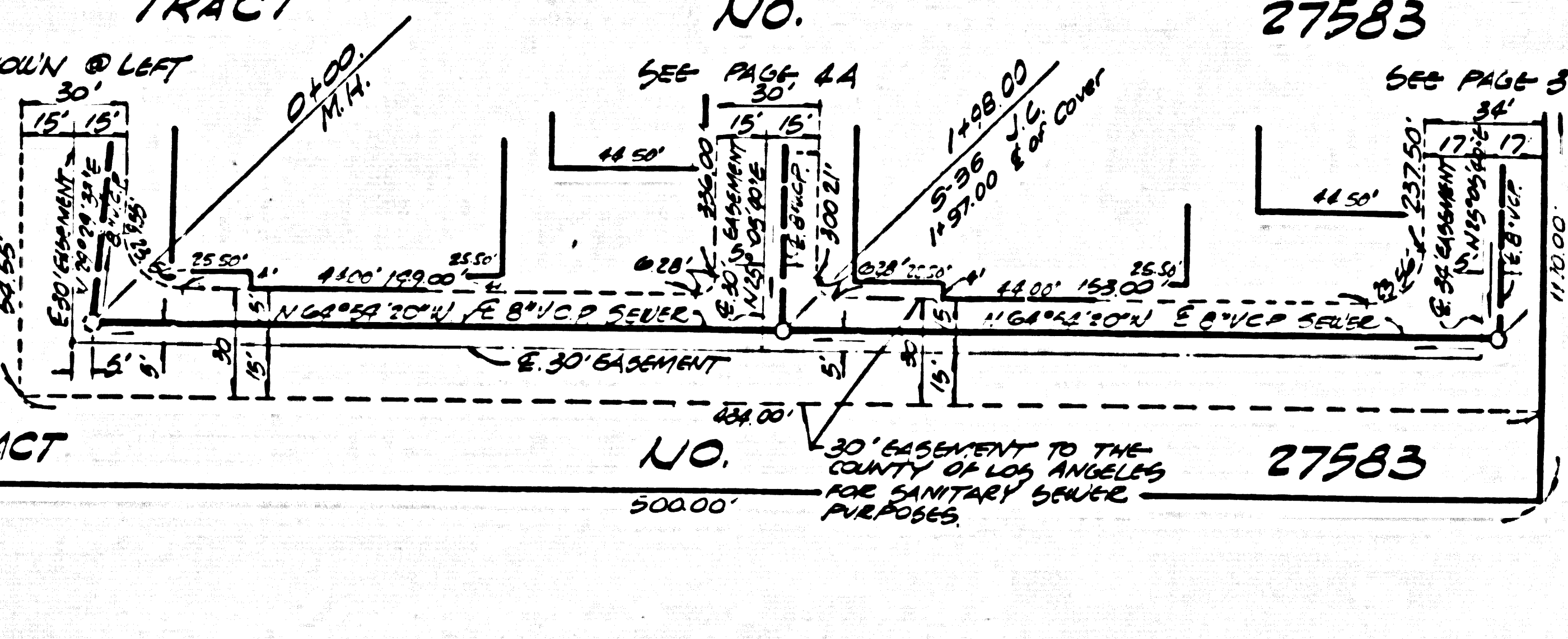
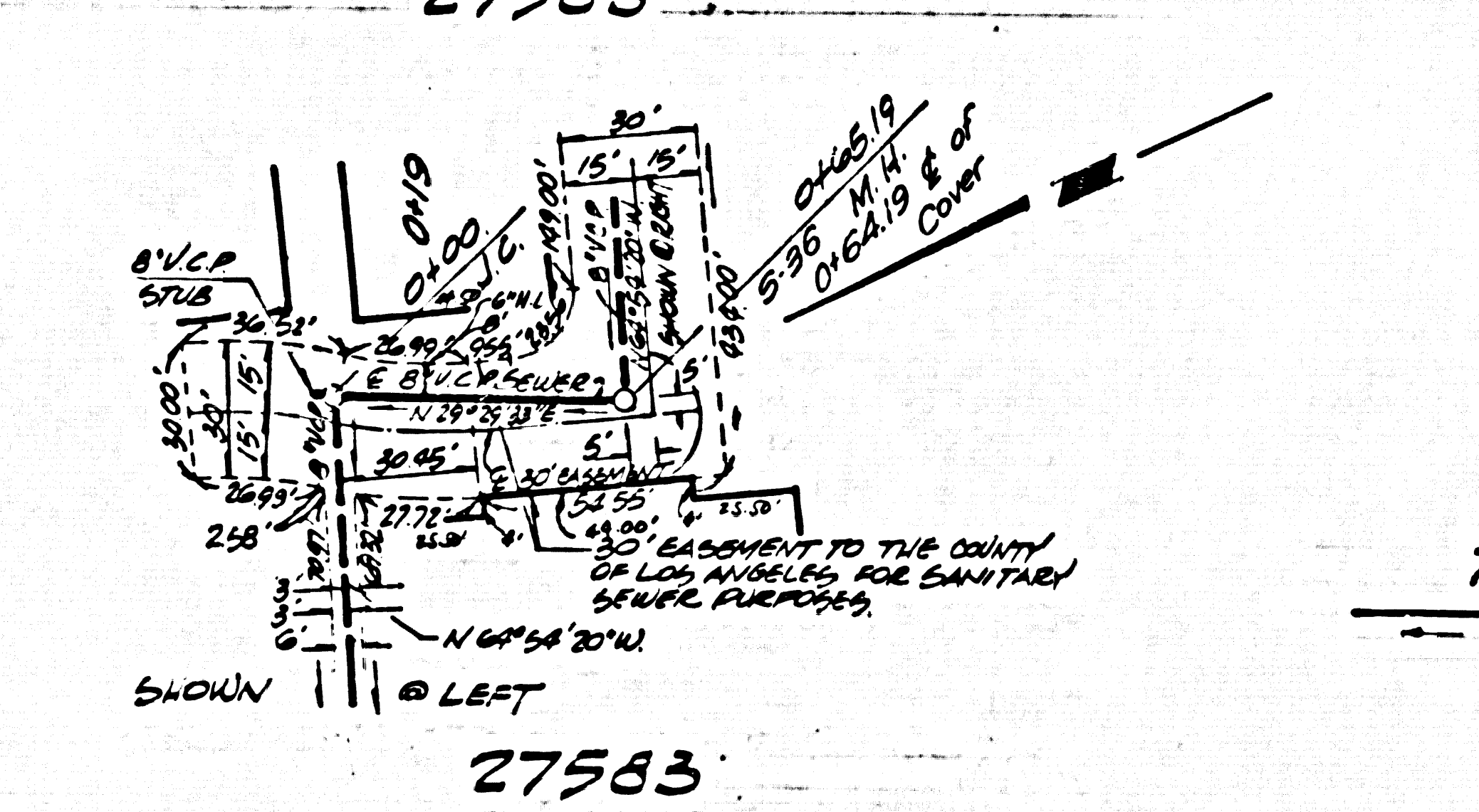
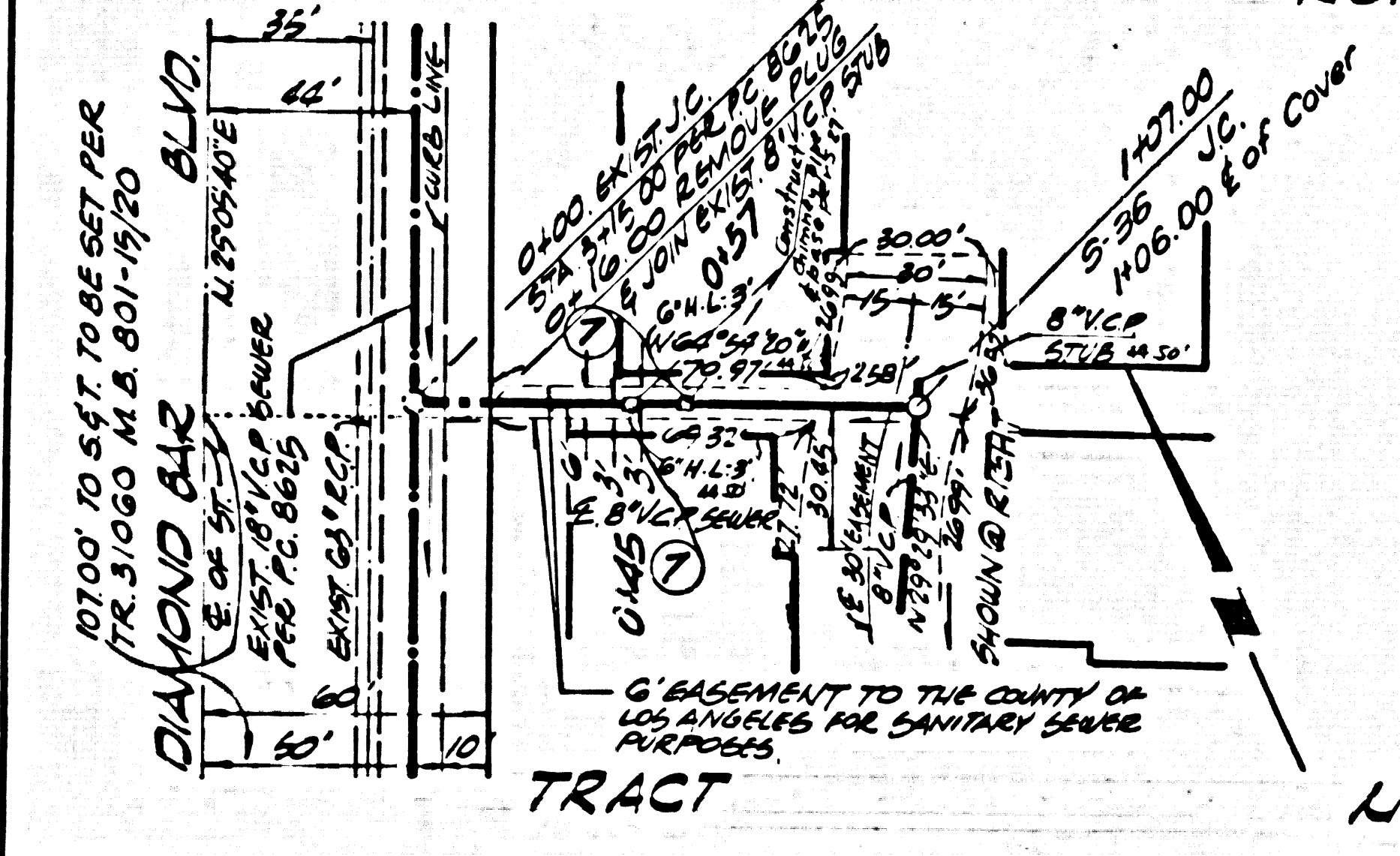
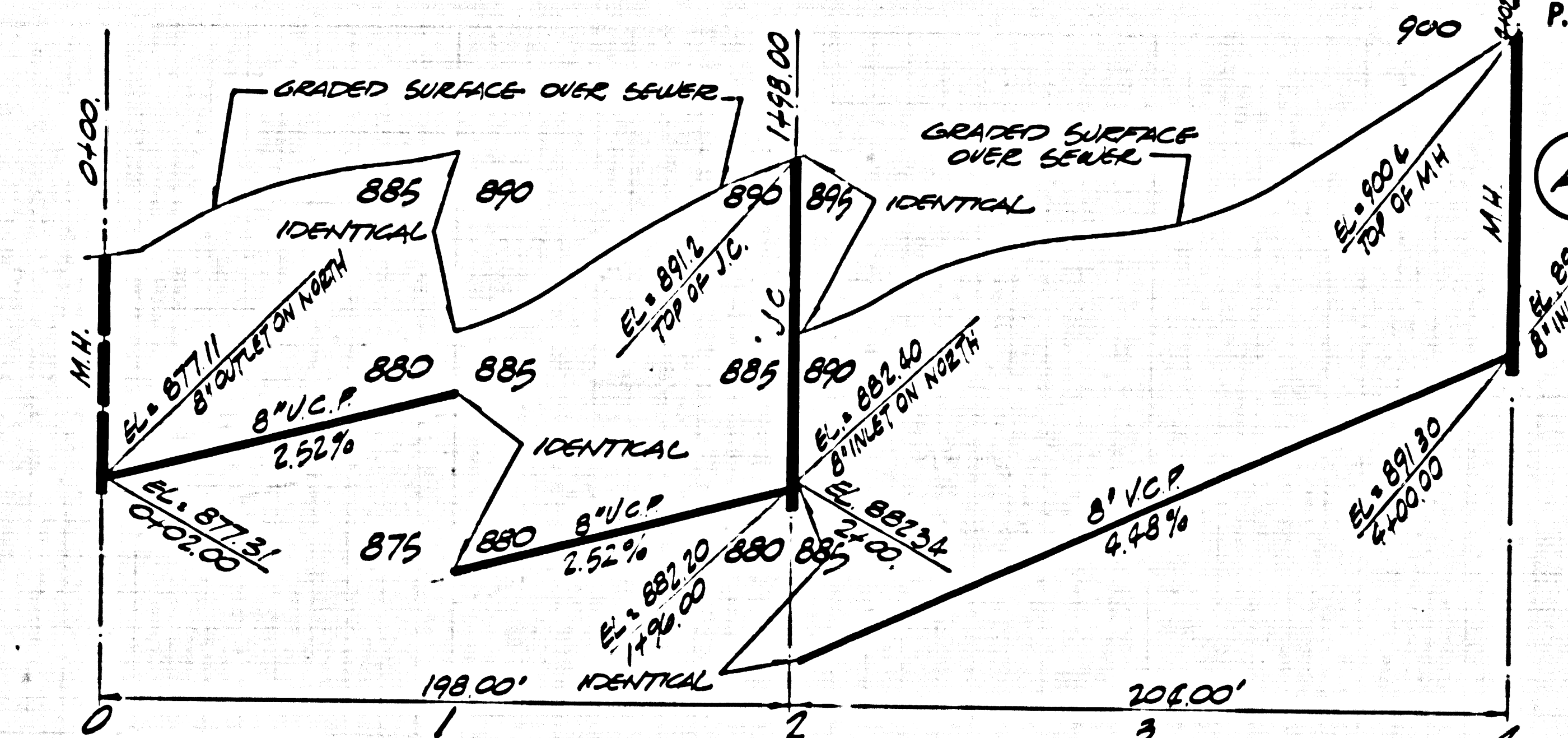
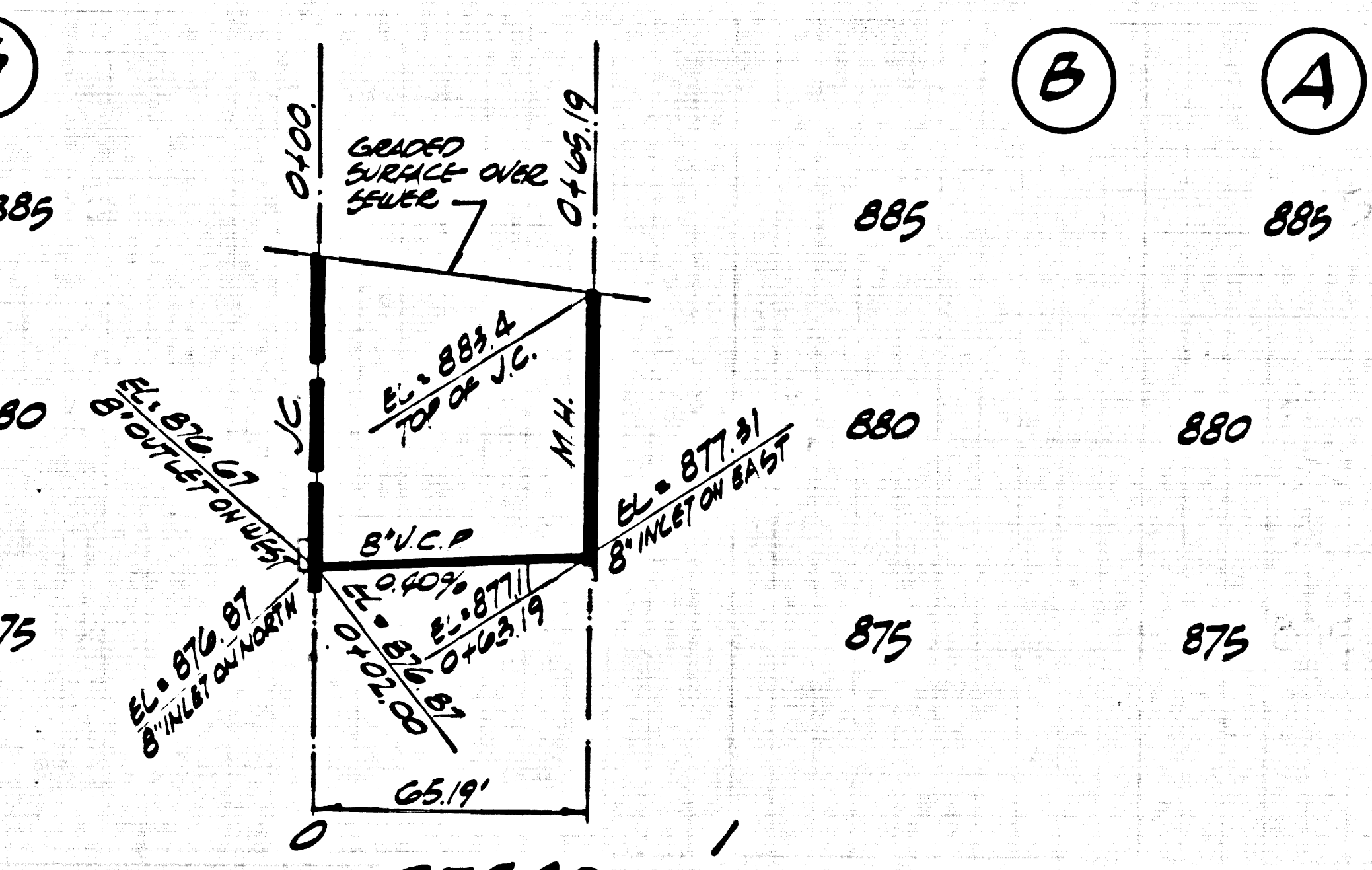
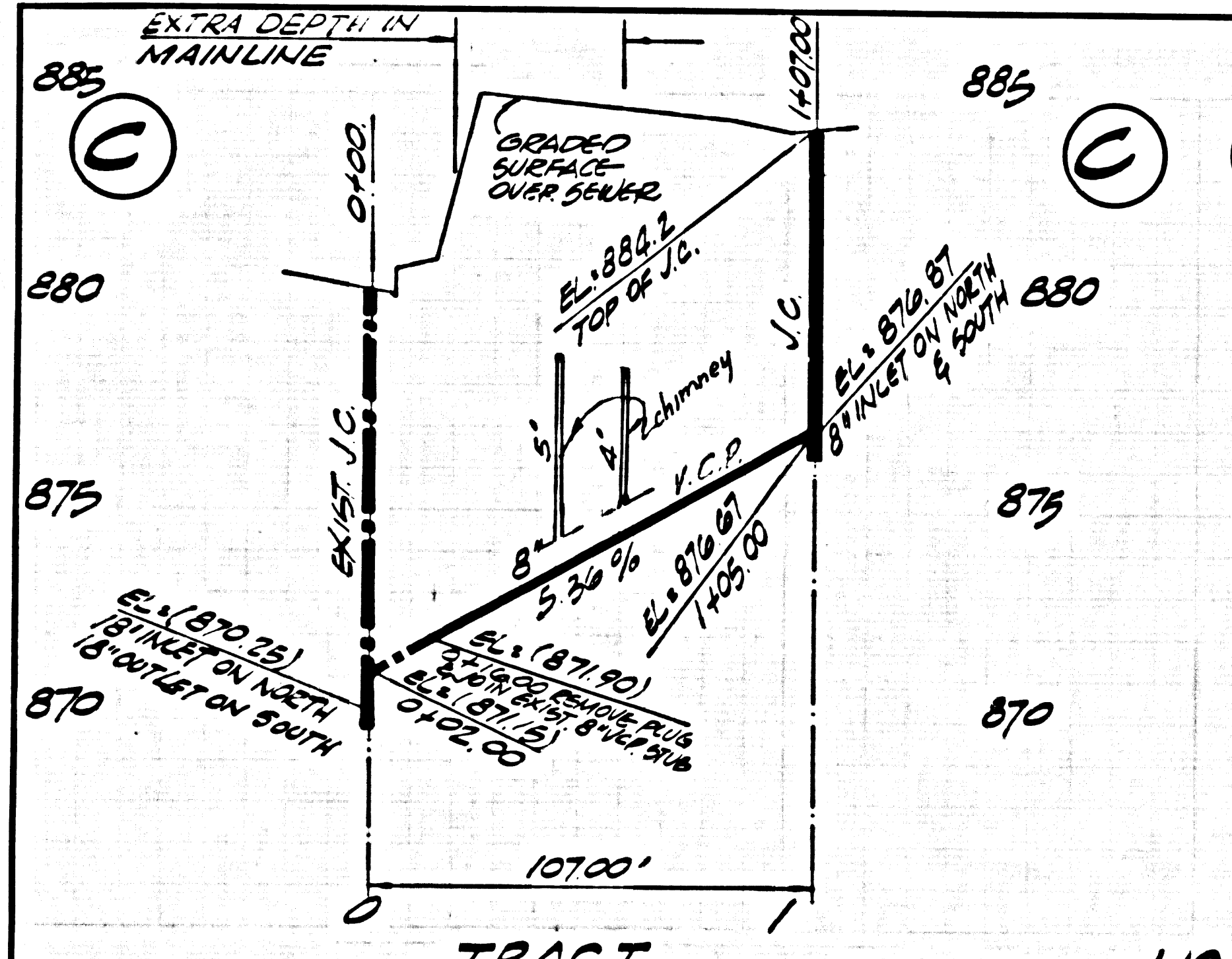
W.S. 39, C-3
 2 SHEETS, 4 PAGES
 SCALE: VERT. 1"=4' HORZ. 1"=40'
 JUN 1972
 PREPARED IN THE OFFICES OF
 E.L. PEARSON & ASSOCIATES
 3955 BURN STREET, NEWPORT BEACH, CALIF. 92660
 REG. C.E. NO. 13110
 FOR LEGEND SEE PLAN NO. 5-1

- NOTES GENERAL & CONSTRUCTION
- PROVIDE STAKES ON THE PROPERTY LINE OR PROPERTY LINES PRODUCED AT RIGHT ANGLES TO THE SEWER LINE AT THE CENTER LINE OF EACH MANHOLE.
 - NO REPRESENTATIVE OF THE COUNTY ENGINEER WILL SURVEY OR LAY OUT ANY PORTION OF THE WORK.
 - THE PRIVATE ENGINEER SHALL FURNISH THE COUNTY ENGINEER WITH GRADING SHEETS AND STATIONING FOR ALL HOUSE LATERALS AND ALL HOUSE LATERALS SHALL BE CONSTRUCTED IN A STRAIGHT ALIGNMENT AT RIGHT ANGLES FROM THE MAIN LINE SEWER EXCEPT AS SHOWN ON THE PLANS. HOUSE LATERALS FROM CHIMNEYS SHALL NOT HAVE AN ANGLE OF LESS THAN 45° WITH THE MAIN LINE SEWER. ANY CHANGE IN ALIGNMENT SHALL BE REQUESTED IN WRITING BY THE PRIVATE ENGINEER.
 - THE PRIVATE ENGINEER SHALL FURNISH THE HOUSE LATERAL DEPTH AT THE PROPERTY LINE BELOW THE TOP OF CURB ELEVATION FOR EACH HOUSE LATERAL ON THE GRADE SHEET.
 - NO REVISIONS SHALL BE MADE IN THESE PLANS WITHOUT THE APPROVAL OF THE COUNTY ENGINEER.
 - THE CONTRACTOR SHALL NOTIFY THE CONSTRUCTION DIVISION BY TELEPHONE, HARBOR 9-070, EXT. 8126, AT LEAST TWENTY-FOUR HOURS BEFORE STARTING ANY WORK UNDER THIS CONTRACT.
 - ALL STRUCTURES SHALL BE SETTING BACK MANHOLE PER 5-3 OR PRECAST CONCRETE MANHOLE PER 5-3A EXCEPT AS NOTED.
 - PIPE IN THE BRANCHED PART OF THE HOUSE PIPE CONNECTING TO MANHOLE CHIMNEYS EXCEPT AS NOTED.
 - MANHOLE TOPS IN UNIMPROVED AREAS SHOULD BE 6" ABOVE FINISHED GRADE.
 - VERTICAL CURVE LENGTH SHALL BE 150' FOR 2" V.C.P. OR 200' FOR 8" V.C.P.
 - IF A POWER POLE IS WITHIN THREE FEET OF THE SEWER, THE SEWER SHALL BE ENCASED, PER 5-23, TWO FEET ON EACH SIDE FROM THE POINT OF INTERFERENCE.
 - IF DURING THE COURSE OF CONSTRUCTION IT IS DETERMINED THAT THERE IS LESS THAN FOUR FEET OF COVER OVER THE TOP OF A MAIN LINE OR HOUSE LATERAL V.C.P. SEWER WHICH IS NOT INDICATED ON THE PLANS, THE PIPE SHALL BE ENCASED PER 5-23, CASE 1, UNLESS OTHERWISE APPROVED BY THE COUNTY ENGINEER.
 - HOUSE LATERALS TO BE CONSTRUCTED WITH INVERTS AT PROPERTY LINE 6 FEET BELOW ROSE OF PINEAULT CEMENTAL EXCEPT AS NOTED.
 - REPAIRS TO ALL TRENCHES WITHIN PAVED AREAS TO MEET L.A. COUNTY ROAD DEPT. OR CALIFORNIA STATE HIGHWAY REQUIREMENTS IN ACCORDANCE WITH PERMITS.
 - SEWERS TO BE TRENCH FOR UNIMPROVED AREAS PER SECTION 504-2, 8.7 OF STANDARD SPECIFICATIONS AND SPECIAL PROVISIONS.
 - REFER TO SECTION 504-4.1 OF THE STANDARD SPECIFICATIONS REGARDING SAFETY COVERS.
 - ALL JOINTS BETWEEN MAIN LINE PIPE AND VERTICAL CLIM PIPE SHALL BE MADE WITH A RUBBER GULCH JOINT, TYPE C OR D (WITH GULCHES AS NECESSARY) PER STD. SPEC. 504-2.
 - FULL COMPLIANCE WITH SECTION 504-1.9 OF THE STANDARD SPECIFICATIONS SHALL BE MAINTAINED THROUGHOUT THE CONSTRUCTION AND DURING MAINTENANCE BY A QUALIFIED ENGINEER. TYPICAL LABORATORY SHALL BE PROVIDED BY THE FREIGHTER PER TO THE INSURANCE OF A CERTIFICATION OF PRACTICE ACCEPTANCE.

NOTICE TO CONTRACTOR
 The existence and location of any underground utility lines or structures shown on these plans are obtained by a search of the available records to the best of my knowledge there are no existing utilities except as shown on these plans. The contractor is required to take due precautionary measures to protect the utility lines shown and any other lines not of record or not shown on these plans.
 E.L. Pearson & Associates
 REG. C.E. NO. 13116

COUNTY OF LOS ANGELES, CALIFORNIA
 HARRY T. KAWAT COUNTY ENGINEER J. D. PARKHURST, CHIEF ENGINEER
 APPROVED BY: *E.L. Pearson* APPROVED BY: *J. D. Parkhurst*
 SAN DIMAS REGIONAL ENGINEER OFFICE ENGINEER
 CHECKED BY: *R.K. Oude* 2-11-72
 REG. C.E. NO. 2406

J.N. 0250-02



P.C. 8795 PAGE 2
 NO CHARGE FOR CONNECTIONS

44215

