

B.M. "C" ELEV. 139.29  
 L.B.T. IN CONC. PUNCT. 2' 12" E.  
 E. INT. REIS ST. & PAINTER AVE.  
 SANTA FE QUAD. 1955

WHITTIER BLDG. DIST. NO. 11.0

PROFILE ALIGNMENT AND GRADE OF  
 SANITARY SEWERS PAGE 1  
 TO BE CONSTRUCTED IN

TRACT N<sup>o</sup> 28738  
 PRIVATE CONTRACT NO. 8800

W.S. 34  
 1 SHEETS, 2 PAGES  
 SCALE: HORIZ. 1" = 40' VERT. 1" = 4'  
 PREPARED IN THE OFFICES OF  
 CONSOLIDATED ENGINEERING CO.  
 2845 W. OLYMPIC BLVD.  
 BEVERLY HILLS, CALIFORNIA  
 REG. C. E. NO. 10975

- NOTES:
- NO REPRESENTATIVE OF THE COUNTY ENGINEER WILL SURVEY OR LAY OUT ANY PORTION OF THE WORK.
  - THE PRIVATE ENGINEER SHALL FURNISH THE COUNTY ENGINEER WITH GRADE SHEETS AND STATIONING FOR ALL HOUSE LATERALS FOR EACH HOUSE LATERAL ON THE GRADE SHEET.
  - THE PRIVATE ENGINEER SHALL FURNISH THE HOUSE LATERAL SHEETS AT THE PROPERTY LINE BELOW THE TOP OF CURB ELEVATION FOR EACH HOUSE LATERAL ON THE GRADE SHEET.
  - NO REVISIONS SHALL BE MADE IN THESE PLANS WITHOUT THE APPROVAL OF THE COUNTY ENGINEER.
  - THE CONTRACTOR SHALL NOTIFY THE CONSTRUCTION DIVISION BY TELEPHONE, 770-67011, EXT. 606 AT LEAST TWENTY-FOUR HOURS BEFORE STARTING ANY WORK UNDER THIS CONTRACT.
  - UNTREATED CLAY PIPE UNITS SHALL BE TYPE "D", "D" OR "G" PER STANDARD SPECIFICATIONS SECTION 208-2.
  - IF A POWER POLE IS WITHIN THREE FEET OF THE SEWER, THE SEWER SHALL BE ENCASED, PER S-25, TWO FEET ON EACH SIDE FROM THE POINT OF INTERFERENCE.
  - IF DURING THE COURSE OF CONSTRUCTION IT IS DETERMINED THAT THERE IS LESS THAN FOUR FEET OF COVER OVER THE TOP OF A HOUSE LATERAL V.C.P. SEWER WHICH IS NOT INDICATED ON THE PLAN, THE PIPE SHALL BE ENCASED PER S-25, UNLESS OTHERWISE APPROVED BY THE COUNTY ENGINEER.
  - HOUSE LATERALS TO BE CONSTRUCTED AS SHOWN ON PLANS, WITH INVERTS AT PROPERTY LINE.
  - RESURFACE ALL TRENCHES WITHIN PAVED AREAS TO MEET L.A. COUNTY ROAD DEPT. OR CALIFORNIA STATE HIGHWAY REQUIREMENTS IN ACCORDANCE WITH PERMITS.
  - SEWERS TO BE TESTED FOR LEAKAGE PER SECTION 206-237 OF THE STANDARD SPECIFICATIONS.
  - ALL STATE AND LOCAL HEALTH ORDINANCES SHALL BE STRICTLY ENFORCED.
  - THE FOLLOWING LATEST REVISED STANDARD PLANS ON FILE IN THE OFFICE OF THE COUNTY ENGINEER SHALL APPLY IN THE CONSTRUCTION OF THIS PROJECT: ALL SAFETY REQUIREMENTS ..... S-2  
 BEDDING FOR SEWERS PER S-27  
 ALLOWABLE TRENCH WIDTHS ..... S-23  
 CHIMNEY PIPES PER S-27

FOR LEGEND SEE PLAN NO. S-1

GRADES TO WHICH THIS IMPROVEMENT IS TO BE CONSTRUCTED ARE SHOWN ON PLANS AND PROFILE

THIS DRAWING AND THE DATA HEREON ARE HEREBY MADE A PART OF THE SPECIFICATIONS. WORK SHALL BE CONSTRUCTED ACCORDING TO THE STANDARD SPECIFICATIONS FOR HIGHWAY AND SANITARY SEWERS, LATEST EDITIONS, AND THE STANDARD SPECIFICATIONS FOR THE COUNTY ROAD DEPT., DISTRICT OFFICE NO. 11, AND PAY A FEE TO THE COUNTY ENGINEER, 2700 W. 4TH STREET, BEVERLY HILLS, CALIFORNIA, REGIONAL OFFICE, SUFFICIENT TO COVER THE COST OF CONSTRUCTION INSPECTION AND RECORD PLANS. APPROVAL OF THIS PLAN BY THE COUNTY OF LOS ANGELES DOES NOT CONSTITUTE A REPRESENTATION AS TO THE ACCURACY OF THE LOCATION OF OR THE EXISTENCE OR NON-EXISTENCE OF ANY UNDERGROUND UTILITY PIPE, OR STRUCTURE WITHIN THE LIMITS OF THIS PROJECT. REFER TO SECTION 7-10.6.1 OF THE STANDARD SPECIFICATIONS REGARDING SAFETY ORDERS.

COUNTY OF LOS ANGELES, CALIFORNIA  
 HARVEY T. SHAWDT COUNTY ENGINEER CITY OF JANTA FE SPRINGS

APPROVED BY: *Alfonso E. Ramirez* 9-18-78

SUBMITTED BY: *Salvador P. Lopez* REGIONAL INSPECTOR  
 CHECKED BY: *Dwaine McCollum* 7/2/78  
 REG. C. E. NO. 15731

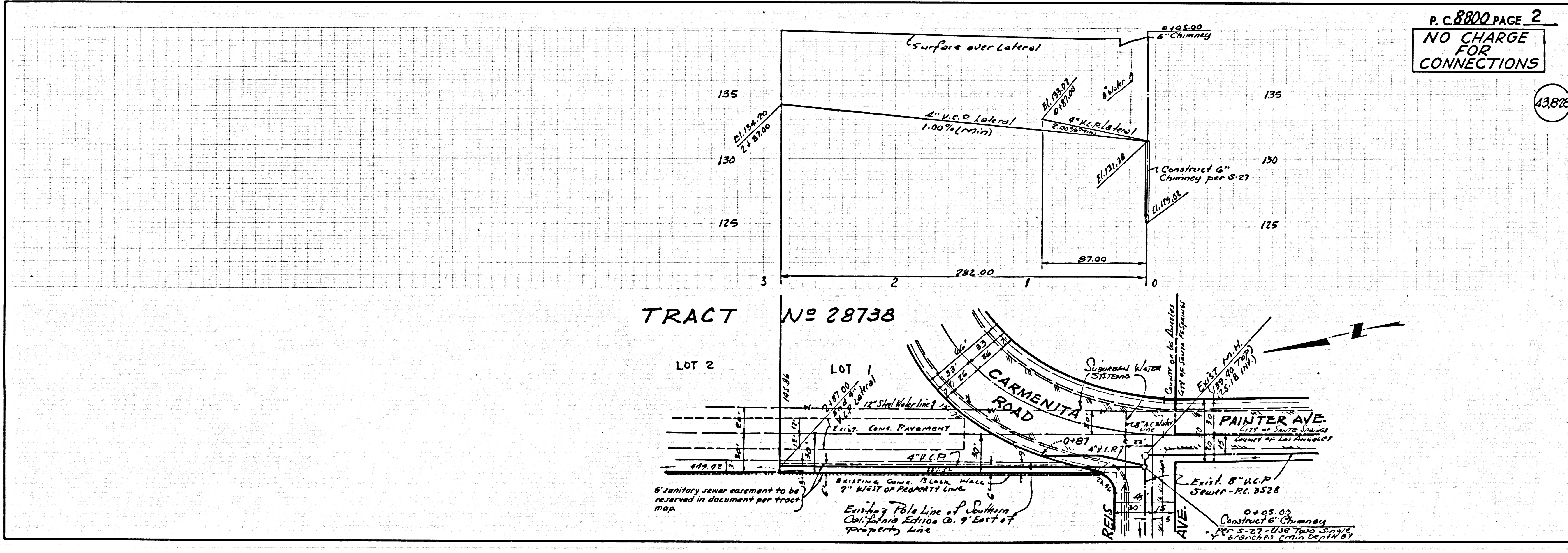
J. N. 0250.02

COLLECT CHARGES AS INDICATED

NOTICE TO CONTRACTOR

The existence and location of any underground utility pipes or structures shown on these plans are obtained by a search of the available records to the best of my knowledge there are no existing utilities except as shown on these plans. The contractor is required to take due precautionary measures to protect the utility lines shown and any other lines not shown on these plans.

*Enrique Davalos* 8-2-78



P. C. 8800 PAGE 2  
 NO CHARGE FOR CONNECTIONS