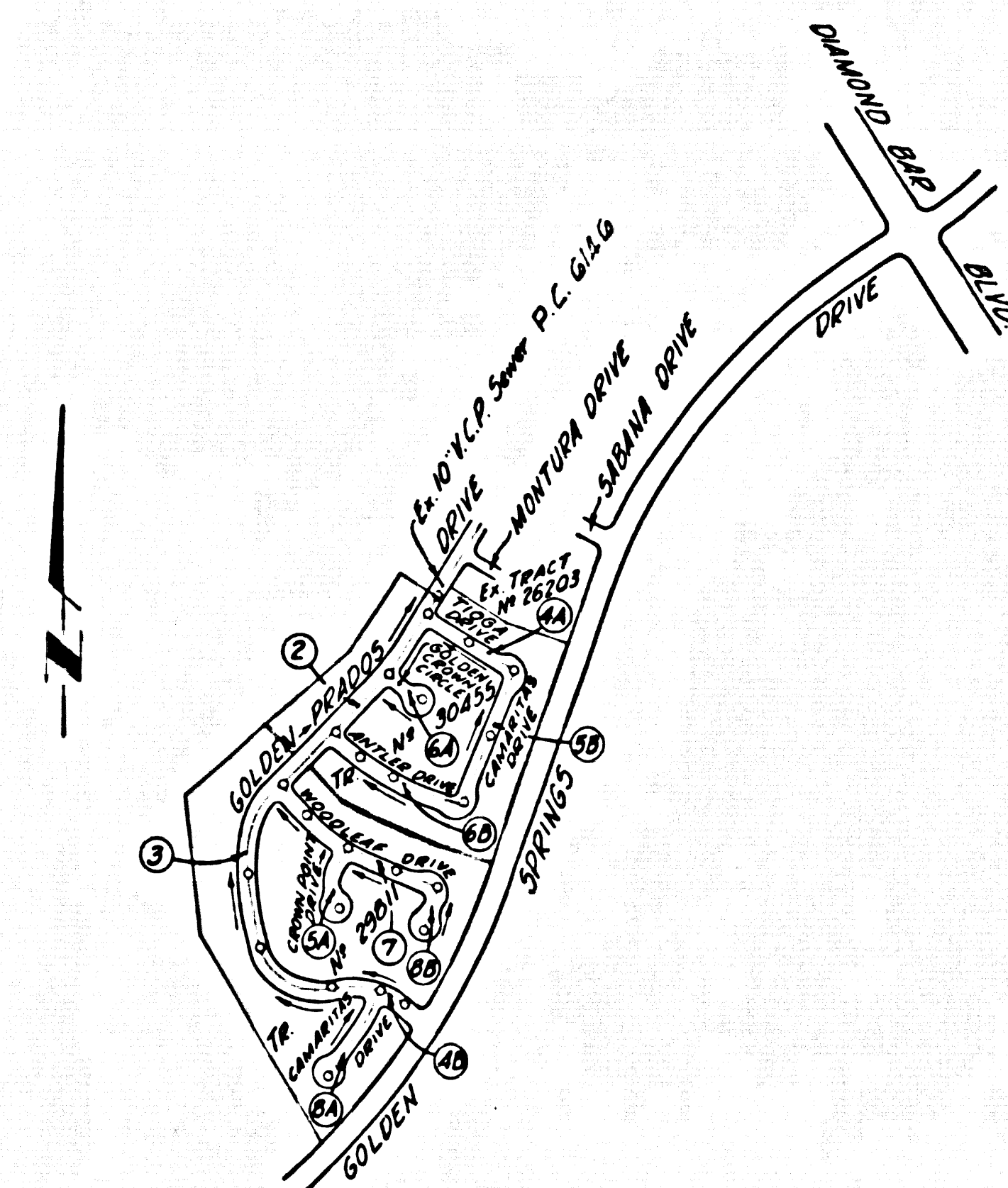


B.M. BG 2127 ELEV. 768.219
 RDBM Tag W.C.B. 211. S.B.C.R. 2
 S.W. Cor. Diamond Bar Blvd + Golden
 Springs Dr. 69th S + 40th W. 4th Inf.
 OTTERBEIN QUAD. 1965



P.C. 8305
 INDEX MAP
 SCALE: 1"=600'

No provision for the disposal of industrial wastes shall be made to sewers unless on these drawings without written permission from the Chief Engineer and General Manager of the County Sanitation Districts.

COLLECT CHARGES AS INDICATED

SAN DIMAS BLDG. DIST. NO. 10

- NOTE:
- HOUSE LATERALS TO BE CONSTRUCTED WITH INVERTS AT PROPERTY LINE 8 FEET BELOW CURB GRADE EXCEPT AS NOTED.
 - PROVIDE STAKES ON THE PROPERTY LINE OR PROPERTY LINES PRODUCED AT RIGHT ANGLES TO THE SEWER LINE AT THE CENTER LINE OF EACH MANHOLE.
 - NO REPRESENTATIVE OF THE COUNTY ENGINEER WILL SURVEY OR LAY OUT ANY PORTION OF THE WORK.
 - THE PRIVATE ENGINEER SHALL FURNISH THE COUNTY ENGINEER WITH GRADE SHEETS AND STATIONING FOR ALL HOUSE LATERALS AND "T" OR "T" BRANCHES AND SHALL PROVIDE STAKES FOR THEM AT THEIR PROPER LOCATIONS WITH STATIONING PLAINLY MARKED. ALL HOUSE LATERALS SHALL BE CONSTRUCTED IN A STRAIGHT ALIGNMENT AT RIGHT ANGLES FROM THE MAIN LINE SEWER EXCEPT AS SHOWN ON THE PLANS. HOUSE LATERALS FROM CHIMNEYS SHALL NOT HAVE AN ANGLE OF LESS THAN 45° WITH THE MAIN LINE SEWER. ANY CHANGE IN ALIGNMENT SHALL BE REQUESTED IN WRITING BY THE PRIVATE ENGINEER.
 - THE PRIVATE ENGINEER SHALL FURNISH THE COUNTY LATERAL DEPTH AT THE PROPERTY LINE BELOW THE TOP OF CURB ELEVATION FOR EACH HOUSE LATERAL ON THE GRADE SHEET.
 - NO REVISIONS SHALL BE MADE IN THESE PLANS WITHOUT THE APPROVAL OF THE COUNTY ENGINEER.
 - THE CONTRACTOR SHALL NOTIFY THE CONSTRUCTION DIVISION BY TELEPHONE, MADISON 9-2727, EXT. 11591, AT LEAST TWENTY-FOUR HOURS BEFORE STARTING ANY WORK UNDER THIS CONTRACT.
 - ALL STRUCTURES SHALL BE EITHER BRICK MANHOLES PER S-2 OR PRECAST CONCRETE MANHOLES PER S-3 OR S-4, EXCEPT AS NOTED.
 - "T" OR "T" BRANCHES MAY BE USED FOR CONNECTIONS TO MAINLINE SEWERS EXCEPT AS NOTED.
 - MANHOLE TOPS IN UNIMPROVED RIGHTS OF WAY TO BE 6 INCHES ABOVE FINISHED GRADE.
 - USE EXTRA STRENGTH PIPE. ALL PIPE IS STANDARD DEPTH EXCEPT AS NOTED. 4" C.I.P. TO BE CLASS 150.
 - VITRIFIED CLAY PIPE JOINTS SHALL BE TYPE "B", "F", OR "G" PER STANDARD SPECIFICATIONS SECTION 206-2.
 - IF A POWER POLE IS WITHIN THREE FEET OF THE SEWER, THE SEWER SHALL BE ENCASED, PER S-23, TWO FEET ON EACH SIDE FROM THE POINT OF INTERFERENCE.
 - IF DURING THE COURSE OF CONSTRUCTION IT IS DETERMINED THAT THERE IS LESS THAN FOUR FEET OF COVER OVER THE TOP OF A MAIN LINE OR HOUSE LATERAL V.C.P. SEWER WHICH IS NOT INDICATED ON THE PLANS, THE PIPE SHALL BE ENCASED PER S-23, UNLESS OTHERWISE APPROVED BY THE COUNTY ENGINEER.
 - RESURFACE ALL TRENCHES WITHIN PAVED AREAS TO MEET L.A. COUNTY ROAD DEPT. OR CALIFORNIA STATE HIGHWAY REQUIREMENTS IN ACCORDANCE WITH PERMITS.
 - SEWERS TO BE TESTED FOR LEAKAGE PER SECTION 206-2.3.7 OF THE STANDARD SPECIFICATIONS.
 - REFER TO SECTION 7.16.1 OF THE STANDARD SPECIFICATIONS, REGARDING SAFETY ORDERS.
 - ALL JOINTS BETWEEN CAST IRON PIPE AND VITRIFIED CLAY PIPE SHALL BE MADE WITH A RUBBER SLEEVE JOINT, TYPE "C" OR "D", (WITH WASHING IF NECESSARY) PER STANDARD SPECIFICATIONS, SECTION 206-2.

THE FOLLOWING LATEST REVISED STANDARD PLANS ON FILE IN THE OFFICE OF THE COUNTY ENGINEER SHALL APPLY IN THE CONSTRUCTION OF THIS PROJECT.

LEGEND	S-1
MINIMUM PUBLIC SAFETY REQUIREMENTS	S-2
BRICK MANHOLE	S-3
NON-REINFORCED PRECAST CONCRETE MANHOLE	S-4
REINFORCED PRECAST CONCRETE MANHOLE	S-5
MANHOLE FRAME AND COVER	S-6
STANDARD MANHOLE STEP	S-7
REGIONS FOR SEWER PIPE	S-8
CASTING AND ENCASING	S-9
WYE OR TEE SUPPORT	S-10
ALLOWABLE TRENCH WIDTHS	S-11
RECTANGULAR SHALLOW MANHOLE	S-12
RECTANGULAR MANHOLE FRAME AND COVERS	S-13
Chimney Type and Size	S-14

County Sanitation Districts shall be notified prior to the following: 1. Shallow trenching 2. Trenching over existing utilities 3. Trenching in paved areas 4. Trenching in rights of way 5. Trenching in public places 6. Trenching in residential areas 7. Trenching in commercial areas 8. Trenching in industrial areas 9. Trenching in public works areas 10. Trenching in utility areas 11. Trenching in other areas as indicated on the plans.

PROFILE, ALIGNMENT AND GRADE OF
 SANITARY SEWERS P.C. 8305
 PAGE 1

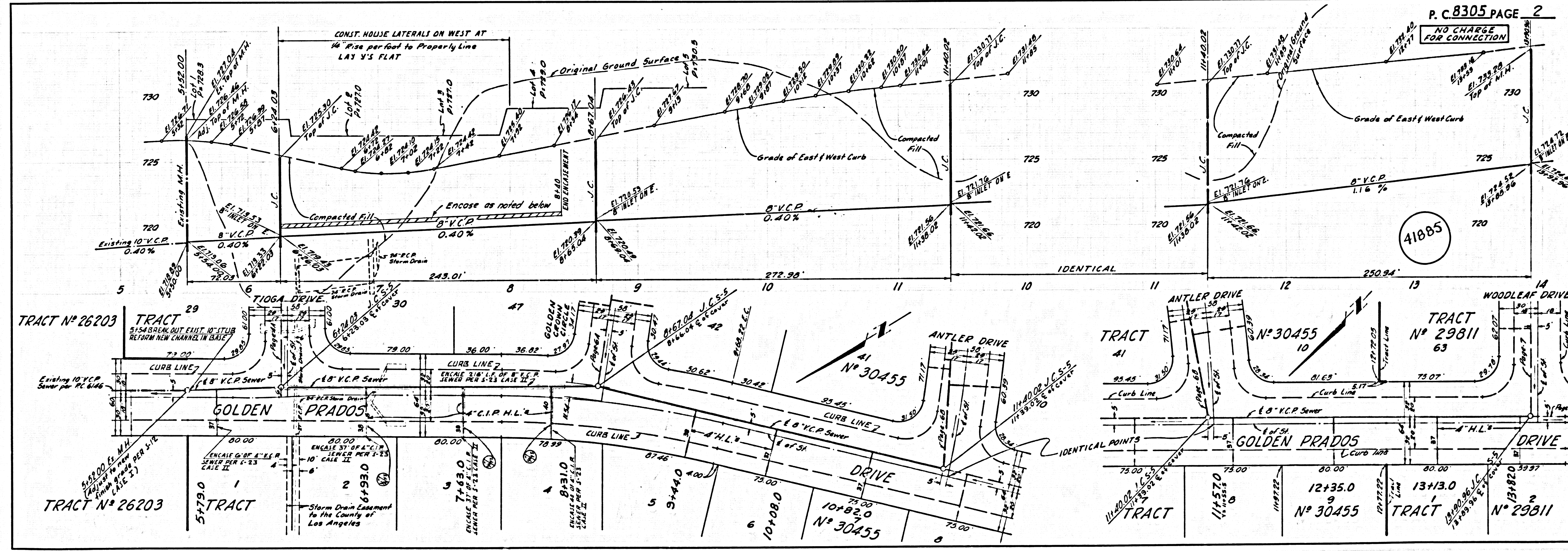
CONSTRUCTED IN
TRACT NO. 30455
 AND
TRACT NO. 29811
 PRIVATE CONTRACT NO. 8305

W.S. 39-C3
 4 SHEETS; 8 PAGES
 SCALE: VERT. 1"=8' Except as noted
 HORIZ. 1"=40' Except as noted
 AUG. 18, 1965
 PREPARED IN THE OFFICES OF
ANACAL ENGINEERING CO.
 222 E. Lincoln Avenue
 Anaheim, California
 By: *Art. Aguilera*
 REG. C. E. NO. 8427

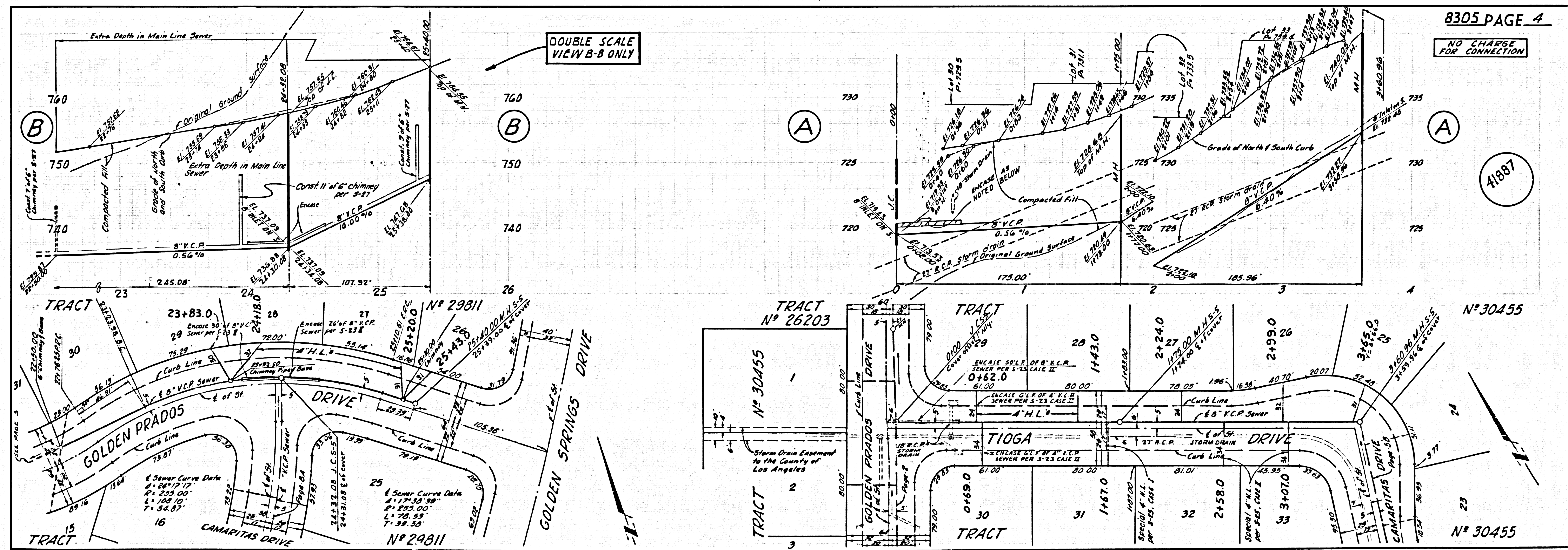
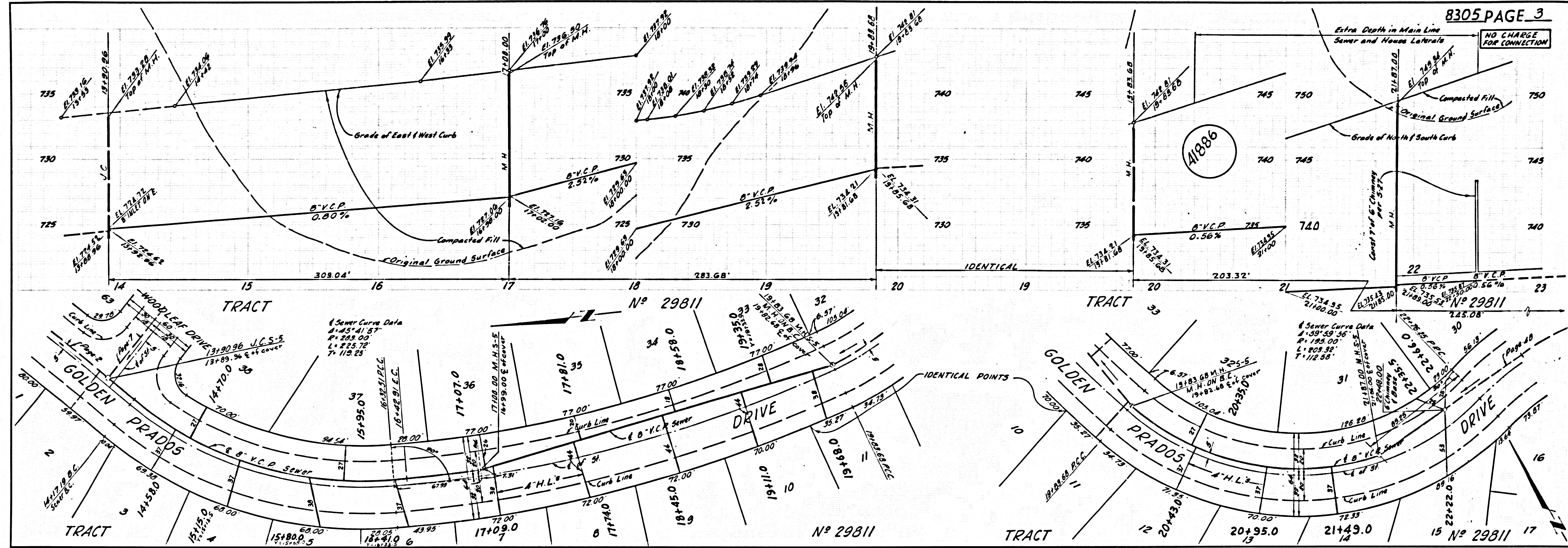
NOTE: GRADES TO WHICH THIS IMPROVEMENT IS TO BE CONSTRUCTED ARE SHOWN ON PLANS AND PROFILES. GRADE POINTS FOR TOP OF CURB, CENTER LINE OF STREETS, OR CENTER LINE OF ALLEYS ARE SHOWN BY CIRCLES ON PROFILES. AT ALL POINTS BETWEEN DESIGNATED POINTS THE GRADE SHALL BE ESTABLISHED SO AS TO CONFORM TO A STRAIGHT LINE DRAWN BETWEEN SAID DESIGNATED POINTS. ELEVATIONS ARE IN FEET ABOVE U.S.C. & G.S. SEA LEVEL DATUM OF 1929. WORK SHALL BE CONSTRUCTED ACCORDING TO THE STANDARD SPECIFICATIONS FOR PUBLIC WORKS CONSTRUCTION (1967 EDITION WITH C.B. 63 SUPPLEMENT) AND COUNTY ENGINEER SPECIAL PROVISIONS DATED JAN. 2, 1964 WHICH SHALL BE PROSECUTED ONLY IN THE PRESENCE OF THE COUNTY ENGINEER. BEFORE WORK CAN BE STARTED, THE CONTRACTOR MUST OBTAIN A PERMIT TO EXCAVATE IN COUNTY STREETS FROM THE L.A. COUNTY ROAD DEPT., DISTRICT OFFICE NO. 1, AND PAY A FEE TO THE COUNTY ENGINEER, ROOM 238, COUNTY ENGINEERING BUILDING, 100 WEST SPRING STREET OR 60 E. 80TH AVE., SAN DIMAS REGIONAL OFFICE, SUBJECT TO COVER THE COST OF CONSTRUCTION INSPECTION AND RECORD PLANS. APPROVAL OF THIS PLAN BY THE COUNTY OF LOS ANGELES DOES NOT CONSTITUTE A REPRESENTATION AS TO THE ACCURACY OF THE LOCATION OF OR THE EXISTENCE OR NON-EXISTENCE OF ANY UNDERGROUND UTILITY PIPE, OR STRUCTURE WITHIN THE LIMITS OF THIS PROJECT. THIS NOTE APPLIES TO ALL PAGES. IF WORK IS TO BE DONE IN A STATE HIGHWAY, A PERMIT MUST BE OBTAINED FROM THE STATE OF CALIFORNIA, DIVISION OF HIGHWAYS, 120 SOUTH SPRING STREET, LOS ANGELES, CALIFORNIA.

COUNTY OF LOS ANGELES, CALIFORNIA
 JOHN A. LAMBE, COUNTY ENGINEER
 J. D. PARKURST, CHIEF ENGINEER
 APPROVED BY: *John A. Lambe* COUNTY ENGINEER
 APPROVED BY: *J. D. Parkurst* CHIEF ENGINEER
 CHECKED BY: *Ralph A. ...* 3/2/70
 REG. C. E. NO. 13906
 DATE

41884



P. C. 8305 PAGE 2



L.A. COUNTY SEWER SHEET NO. 2 SOUTHERN CALIFORNIA BLUEPRINT CO. 7/24/52 8-26

