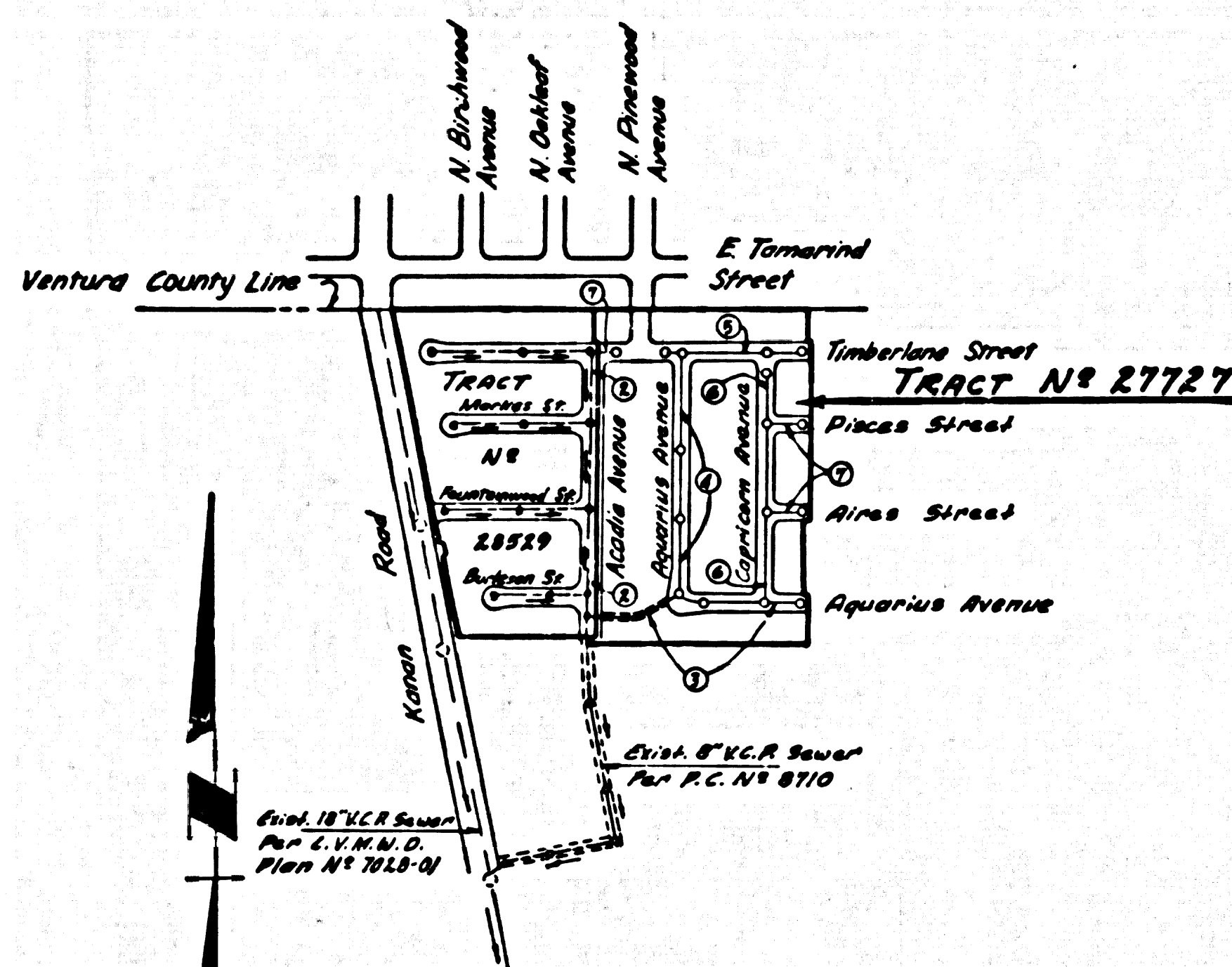


B.M. BY 9010 ELEV. 950.254  
 ELEV. 950.754 RD DEPT. B.M. TAG IN SOUTH END  
 CATCH BASIN 41.0 FT. E/O. KANAN ROAD 8.095  
 MILES N/O THOUSAND CUBS BLD. 0.16 MILES S/O  
 L.A. COUNTY & VENTURA CO. LINE  
 MALIBU QUAD. 19.55



INDEX MAP  
 Scale - 1"=600'  
 P.C. 8808  
 NOTE: Figures in circles indicate page numbers.

NOTES CONTD.

- 20. ALL JOINTS BETWEEN CAST IRON PIPE AND VITRIFIED CLAY PIPE SHALL BE MADE WITH A RUBBER SLEEVE JOINT TYPE "C" OR "D" (WITH BUSHING IF NECESSARY) PER STANDARD SPEC. SECT. 208.2.
- 21. ALL SEWER LATERALS WILL CLEAR STORM DRAINS.
- 22. INDICATES DEPTH BELOW CURB GRADE OR GRADE OF CENTER LINE OF STREET.

THE FOLLOWING COUNTY ENGINEER STANDARD PLANS APPLY TO THIS PROJECT

LEGEND	
MIN. PUBLIC SAFETY REQUIREMENTS	S-1
BRICK MANHOLES	S-2
NON REINFORCED PRECAST CONCRETE MANHOLE	S-3
REINFORCED PRECAST CONCRETE MANHOLE	S-3B
MANHOLE FRAME AND COVER	S-18
MANHOLE STEP	S-17
BEDDING FOR SEWER PIPE	S-21
CRADLING AND ENCASUREMENT	S-23
WYE OR TEE SUPPORT	S-26
ALLOWABLE TRENCH WIDTHS	S-33
SPECIAL SUPPORT & PROTECTION	S-12

\*FULL COMPLIANCE WITH SECTION 306-1.93 OF THE SPECIAL PROVISIONS WILL BE REQUIRED FOR BACKFILL IN STREETS. CERTIFICATION OF BACKFILL COMPACTION AND SAND EQUIVALENTS BY A QUALIFIED, REGISTERED TESTING LABORATORY SHALL BE PROVIDED BY THE PERMITTEE PRIOR TO THE ISSUANCE OF A CERTIFICATE OF PARTIAL ACCEPTANCE.

CALABASAS BLDG. DIST. NO. 91

- NOTES
1. PROVIDE STAKES ON THE PROPERTY LINE OR PROPERTY LINES PRODUCED AT RIGHT ANGLES TO THE SEWER LINE AT THE CENTER LINE OF EACH MANHOLE.
  2. NO REPRESENTATIVE OF THE COUNTY ENGINEER WILL SURVEY OR LAY OUT ANY PORTION OF THE WORK.
  3. THE PRIVATE ENGINEER SHALL FURNISH THE COUNTY ENGINEER WITH GRADE SHEETS AND STATIONINGS FOR ALL HOUSE LATERALS AND "T" BRANCHES AND SHALL PROVIDE STAKES FOR THESE AT THEIR PROPER LOCATIONS WITH STATIONING PLAINLY MARKED. ALL HOUSE LATERALS SHALL BE CONSTRUCTED IN A STRAIGHT ALIGNMENT AT RIGHT ANGLES FROM THE MAIN LINE SEWER EXCEPT AS SHOWN ON THE PLANS. HOUSE LATERALS FROM CHIMNEYS SHALL NOT HAVE AN ANGLE OF LESS THAN 45° WITH THE MAIN LINE SEWER. ANY CHANGE IN ALIGNMENT SHALL BE REQUESTED BY THE PRIVATE ENGINEER.
  4. THE PRIVATE ENGINEER SHALL FURNISH THE HOUSE LATERAL DEPTH AT THE PROPERTY LINE BELOW THE TOP OF CURB ELEVATION FOR EACH HOUSE LATERAL ON THE GRADE SHEET.
  5. NO REVISIONS SHALL BE MADE IN THESE PLANS WITHOUT THE APPROVAL OF THE COUNTY ENGINEER.
  6. THE CONTRACTOR SHALL NOTIFY THE CONSTRUCTION DIVISION BY TELEPHONE, HANSON 9-4747, EXT. 8188, AT LEAST TWENTY-FOUR HOURS BEFORE STARTING ANY WORK UNDER THIS CONTRACT.
  7. MANHOLES SHALL BE BRICK SEWER STRUCTURES PER S-3, OR PRECAST CONCRETE MANHOLE PER S-3B, EXCEPT AS NOTED.
  8. USE STANDARD MANHOLE FRAMES AND COVERS, S-18, EXCEPT AS NOTED.
  9. MANHOLE POLE IN UNIMPROVED AREAS OF WAY TO BE SET INCHES ABOVE FINISHED GRADE.
  10. USE EXTRA STRENGTH PIPE. ALL PIPE IS STANDARD DEPTH EXCEPT AS NOTED.
  11. USE MECHANICAL COMPRESSION JOINTS FOR ALL V.C.P. JOINTS PER SPEC., SECS. 24, 46 & 47.
  12. IF A POWER POLE IS WITHIN THREE FEET OF THE SEWER, THE SEWER SHALL BE ENCASED PER S-25, CASE II, TWO FEET ON EACH SIDE FROM THE POINT OF INTERFERENCE.
  13. IF DURING THE COURSE OF CONSTRUCTION IT IS DETERMINED THAT THERE IS LESS THAN FOUR FEET OF COVER OVER THE TOP OF A MAIN LINE OR HOUSE LATERAL V.C.P. SEWER WHICH IS NOT INDICATED ON THE PLANS, THE PIPE SHALL BE ENCASED PER S-25, UNLESS OTHERWISE APPROVED BY THE COUNTY ENGINEER.
  14. HOUSE LATERALS TO BE CONSTRUCTED WITH INVERTS AT PROPERTY LINE 6 FEET BELOW CURB GRADE EXCEPT AS NOTED.
  15. RESURFACE ALL TRENCHES WITHIN PAVED AREAS TO MEET L.A. COUNTY ROAD DEPT. OR CALIFORNIA STATE HIGHWAY REQUIREMENTS IN ACCORDANCE WITH PERMITS.
  16. SEWERS TO BE AIR PRESSURE TESTED FOR ALLOWABLE LEAKAGE PER 308-2.37-C OF THE STANDARD SPECS.
  17. ALL STATE AND LOCAL TRENCH SAFETY ORDERS WILL BE STRICTLY ENFORCED PER SECT. 7, 10, 4, 1 OF STANDARD SPECS.
  18. WYE OR TEE BRANCHES MAY BE USED FOR CONNECTIONS TO MAINLINE SEWERS EXCEPT AS NOTED.
  19. VITRIFIED CLAY PIPE JOINTS SHALL BE TYPE "C", "D", OR "E" PER STANDARD SPECS. 208.2.

PROFILE ALIGNMENT AND GRADE OF P.C. 8808  
 SANITARY SEWERS PAGE 1  
 TO BE CONSTRUCTED IN

TRACT NO. 27727  
 PRIVATE CONTRACT NO. 8808

W.S.  
 4 SHEETS, 7 PAGES  
 SCALE: VERT. 1"=4'  
 HORIZ. 1"=40'  
 JULY 14, 1972  
 44455  
 PREPARED IN THE OFFICES OF  
 R.M. GALLOWAY & ASSOC. INC.  
 19730 VENTURA BLVD., WOODLAND HILLS, CALIF. 91364  
 PHONE 348-8509  
 BY *Walter A. Meier*  
 REG. C.E. NO. 14815  
 FOR LEGEND SEE PLAN NO. S-1

NOTE:  
 GRADES TO WHICH THIS IMPROVEMENT IS TO BE CONSTRUCTED ARE SHOWN ON PLANS AND PROFILES. GRADE POINTS FOR TOP OF CURBS, CENTER LINE OF STREETS, OR CENTER LINE OF ALLEYS ARE SHOWN BY CIRCLES ON PROFILES. AT ALL POINTS BETWEEN DESIGNATED POINTS THE GRADE SHALL BE ESTABLISHED SO AS TO CONFORM TO A STRAIGHT LINE DRAWN BETWEEN SAID DESIGNATED POINTS. ELEVATIONS ARE IN FEET ABOVE U.S.C. & G.S. SEA LEVEL DATUM OF 1929. THIS DRAWING AND THE DATA HEREON ARE HEREBY MADE A PART OF THE SPECIFICATIONS. WORK SHALL BE CONSTRUCTED ACCORDING TO STANDARD SPECIFICATIONS DATED 5/78/72. THE CONTRACTOR SHALL BE RESPONSIBLE FOR OBTAINING ALL NECESSARY PERMITS FROM THE COUNTY ENGINEER AND SHALL BE PROSECUTED ONLY IN THE PRESENCE OF THE COUNTY ENGINEER. BEFORE WORK CAN BE STARTED, THE CONTRACTOR MUST OBTAIN A PERMIT TO EXCAVATE IN COUNTY STREETS FROM THE L.A. COUNTY ROAD DEPT., DISTRICT OFFICE NO. 3, AND PAY A FEE TO THE COUNTY ENGINEER, ROOM 302, COUNTY ENGINEERING BUILDING, 100 WEST SECOND STREET OR SECOND FLOOR, REGIONAL OFFICE, SUPPLEMENT TO COVER THE COST OF CONSTRUCTION INSPECTION AND RECORD DRAWINGS. APPROVAL OF THIS PLAN BY THE COUNTY OF LOS ANGELES DOES NOT CONSTITUTE A REPRESENTATION AS TO THE ACCURACY OF THE LOCATION OR OF THE EXISTENCE OR NON-EXISTENCE OF ANY UNDERGROUND UTILITY PIPE, OR STRUCTURE WITHIN THE LIMITS OF THIS PROJECT. THIS NOTE APPLIES TO ALL PAGES. NO WORK IS TO BE DONE IN A STATE HIGHWAY, A TRAMP MUST BE OBTAINED FROM THE STATE OF CALIFORNIA, DIVISION OF HIGHWAYS, 220 SOUTH BRIDGE STREET, LOS ANGELES, CALIFORNIA.

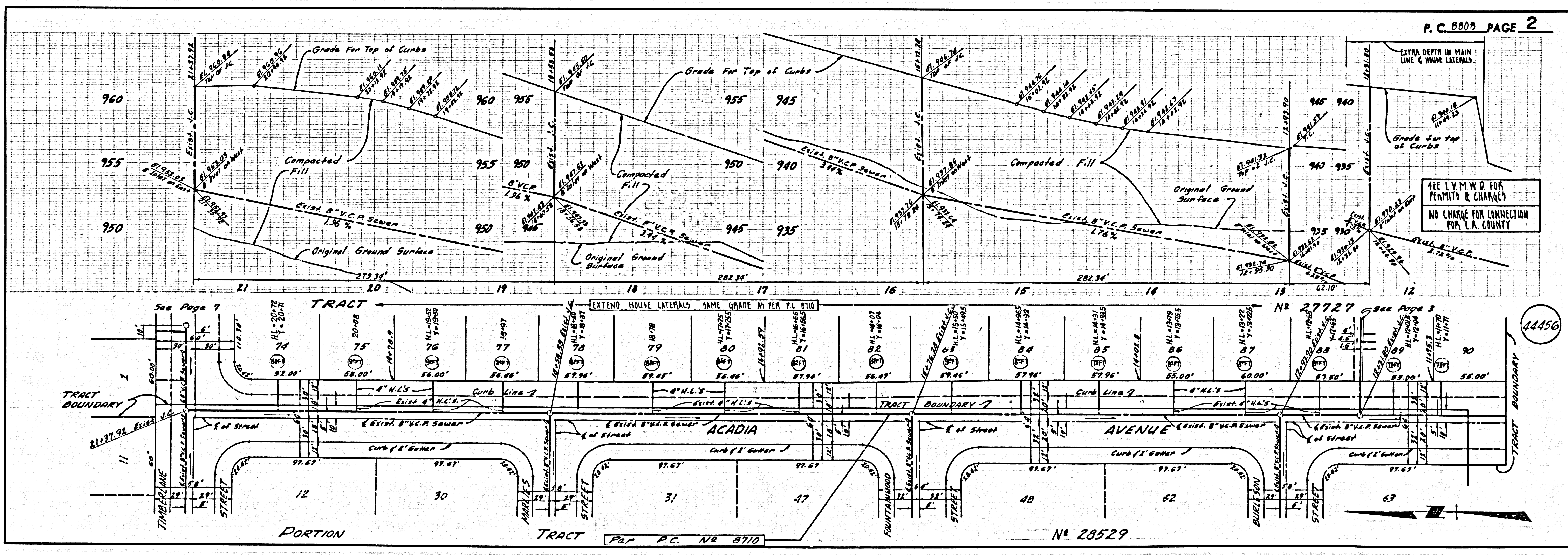
COUNTY OF LOS ANGELES, CALIFORNIA  
 HARVEY T. BRANDT COUNTY ENGINEER LAS VIRGENES MUNICIPAL WATER DISTRICT  
 APPROVED BY *Walter A. Meier* REGIONAL ENGINEER  
 APPROVED BY *Walter A. Meier* GENERAL MGR. CHIEF ENGINEER  
 DATE -

CHECKED BY *Alan J. ...* 2/29/73  
 REG. C.E. NO. 17722

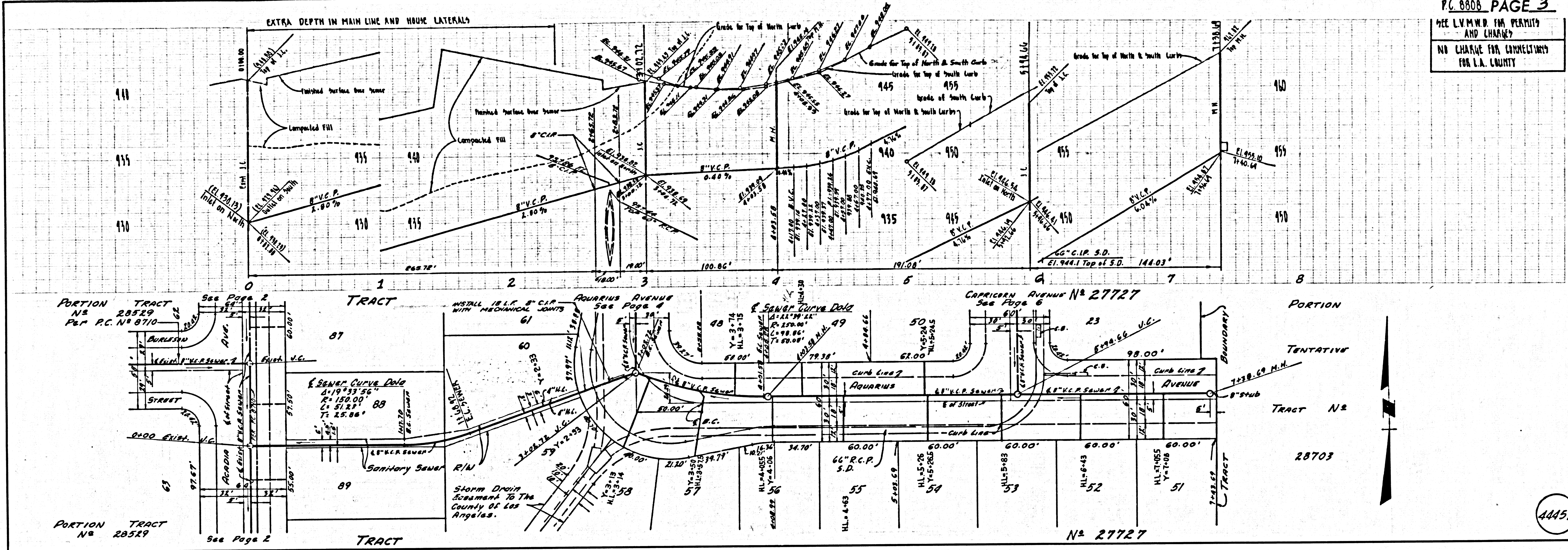
NOTICE TO CONTRACTOR  
 The existence and location of any underground utility pipes or structures shown on these plans are obtained by a search of the available records. To the best of my knowledge there are no existing utilities except as shown on these plans. The contractor is required to take due precautionary measures to protect the utility lines shown and any other lines not of record or not shown on these plans.  
*Walter A. Meier*  
 REG. C.E. NO. 14815

COLLECT CHARGES AS INDICATED

J. N. 0231.02

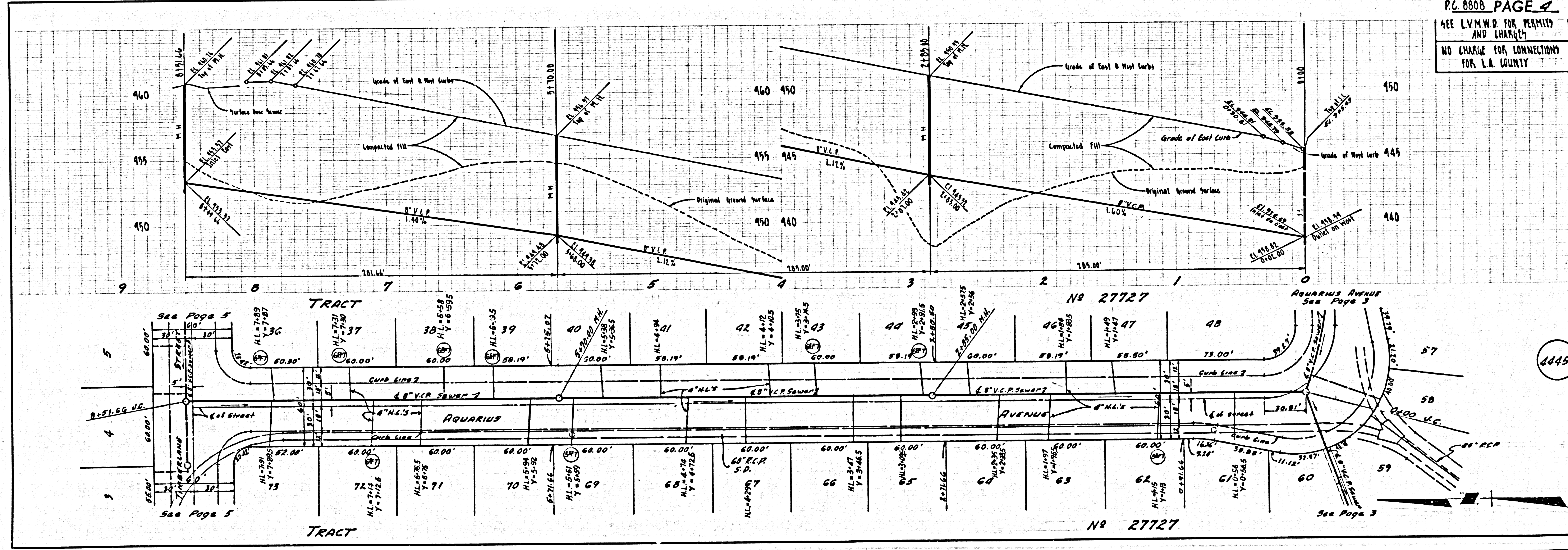


P.C. 8808 PAGE 3  
 SEE L.V.M.W.D. FOR PERMITS  
 AND CHARGES  
 NO CHARGE FOR CONNECTIONS  
 FOR L.A. COUNTY



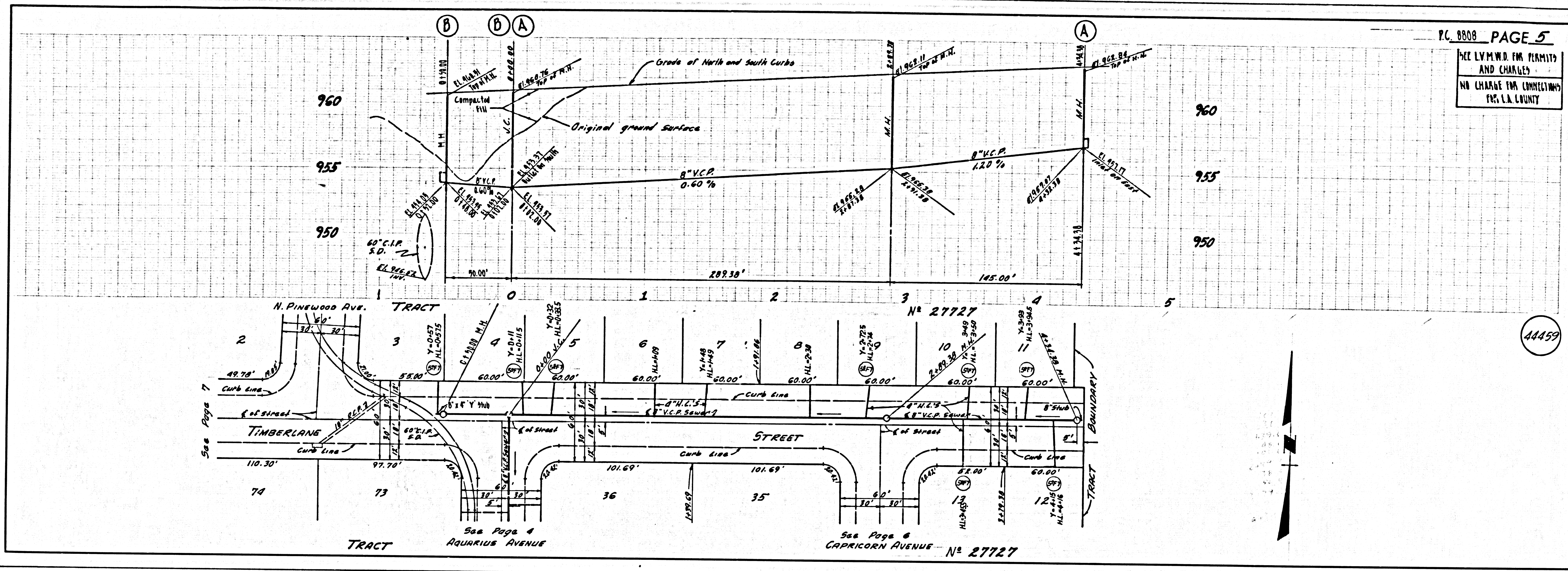
44457

P.C. 8808 PAGE 4  
 SEE L.V.M.W.D. FOR PERMITS  
 AND CHARGES  
 NO CHARGE FOR CONNECTIONS  
 FOR L.A. COUNTY



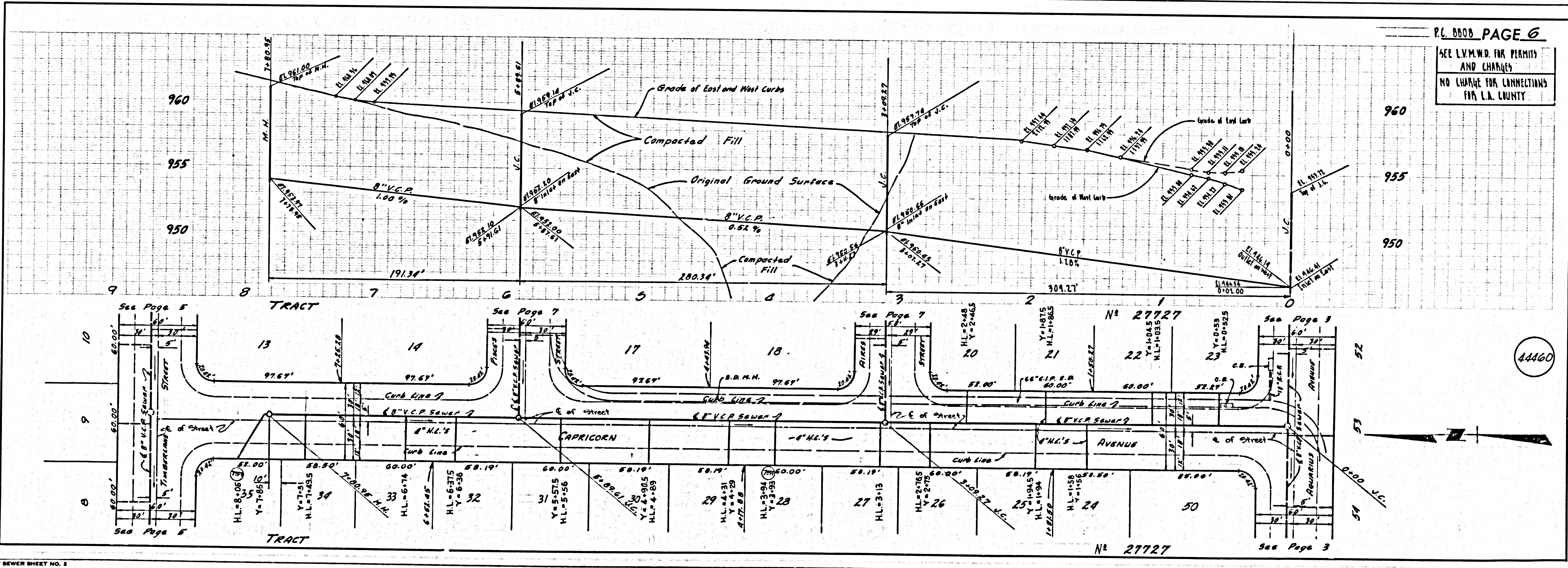
44458

SEE L.V.M.W.D. FOR PERMITS AND CHARGES  
NO CHARGE FOR CONNECTIONS FOR L.A. COUNTY



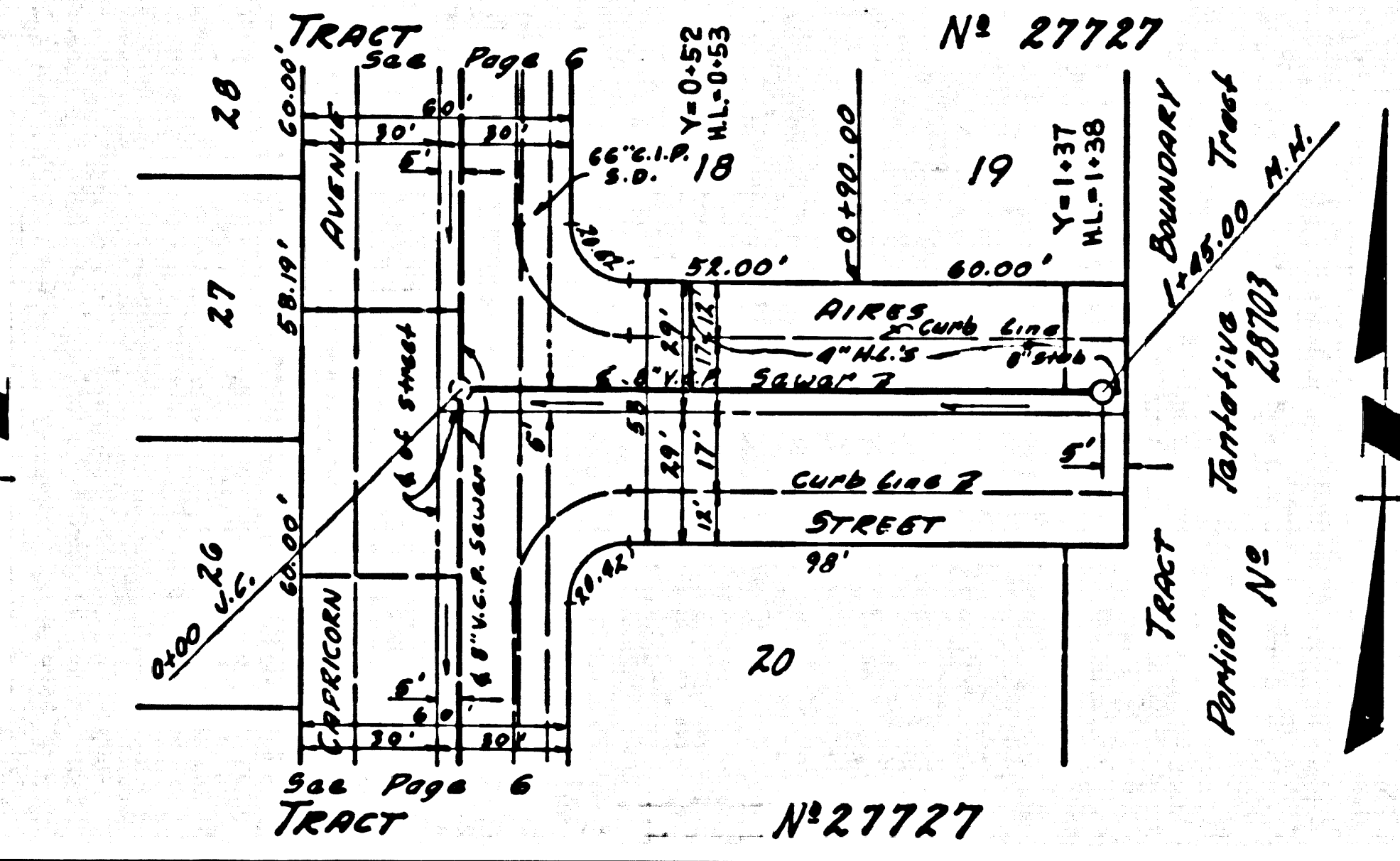
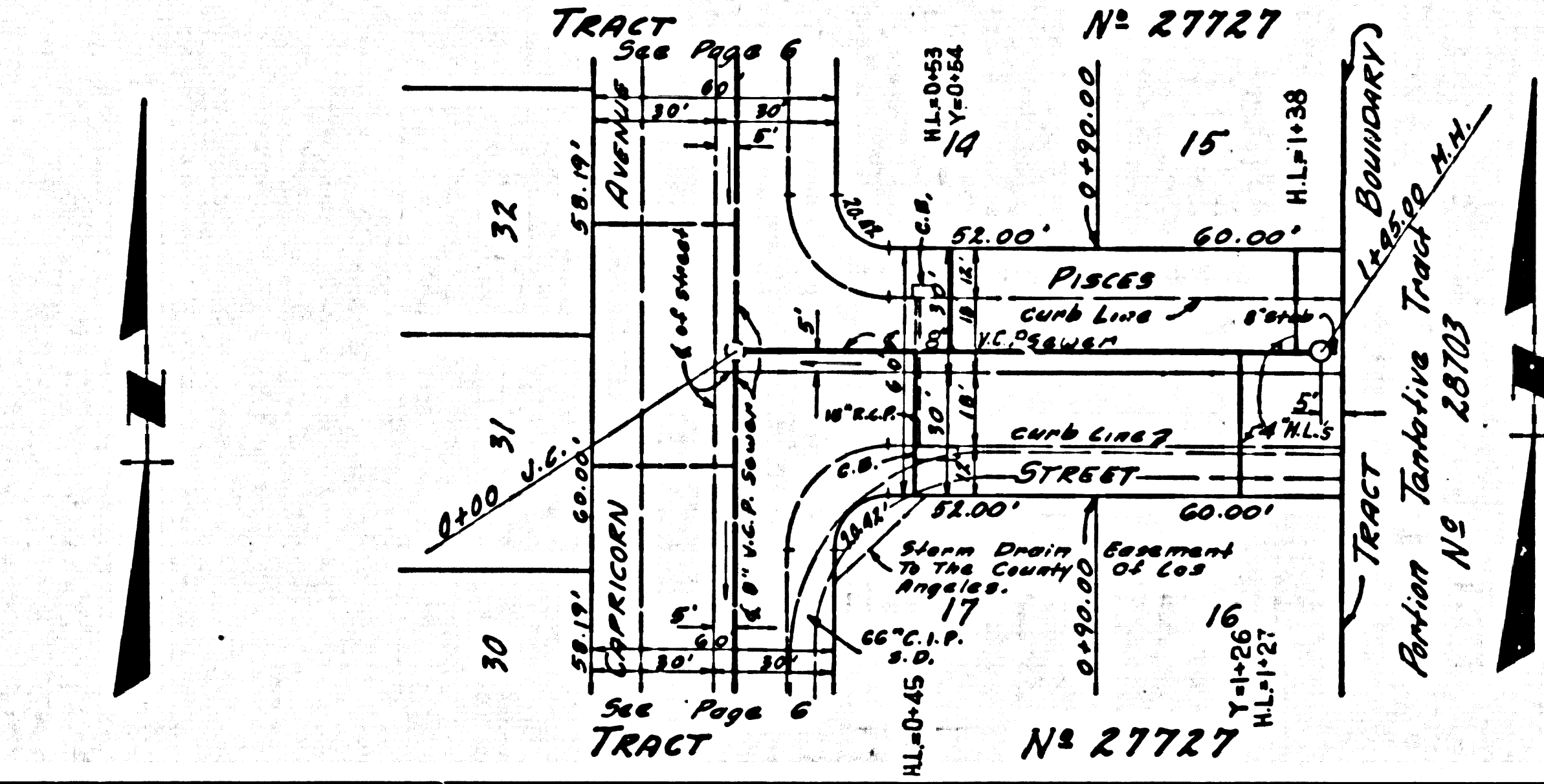
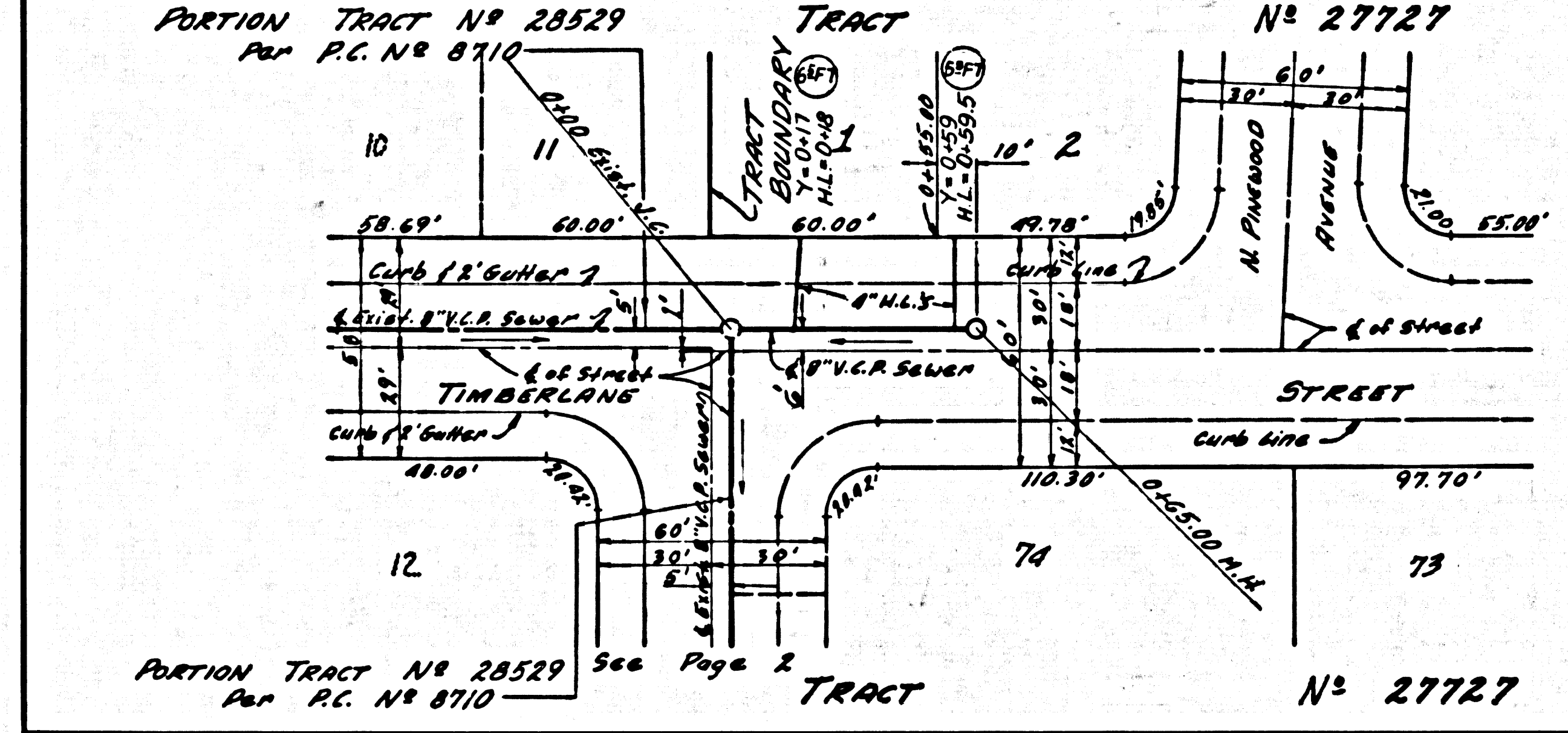
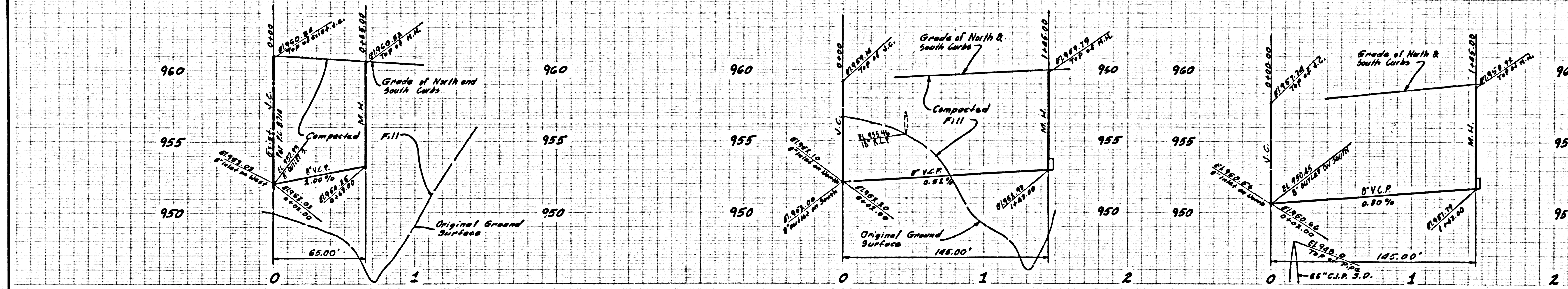
44459

SEE L.V.M.W.D. FOR PERMITS AND CHARGES  
NO CHARGE FOR CONNECTIONS FOR L.A. COUNTY



44460

SEE L.V.M.P.D. FOR PERMITS AND CHARGES NO CHARGE FOR CONNECTIONS FOR L.A. COUNTY



44461