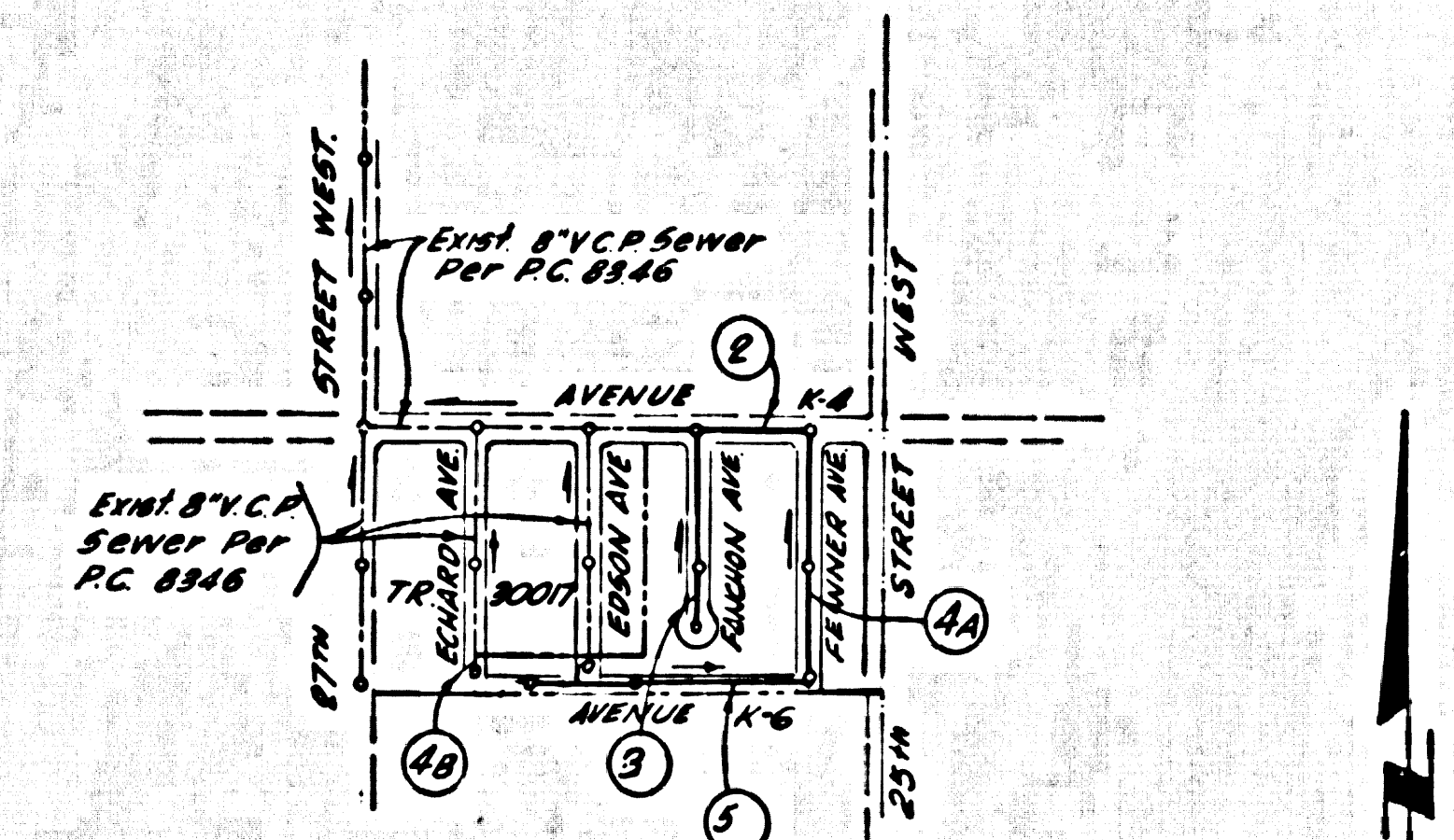


B.M. PL 721 ELEV. 2398.331
 L & T CONC. DR. AND CONC. BLOCK POST
 42 FT. S. & E. AVE. K+283 FT. N. & 25th ST. W.
 MGD (B.M.)
 LANCASTER QUAD. 19.65



INDEX MAP
 SCALE: 1" = 600'
 P.C. 8809
 TRACT No. 29376

No connections for the disposal of industrial wastes shall be made to sewers shown on these drawings without written permission from the Chief Engineer and General Manager of the County Sanitation Districts.

County Sanitation Districts shall be notified prior to the following so that required inspection can be made (Phone 366-9999 - 666-1111) 782-8685

ACCEPTANCE OF THE PROJECT

LANCASTER BLDG. DIST. NO. 8.0

- NOTES:
- HOUSE LATERALS TO BE CONSTRUCTED WITH INVERTS AT PROPERTY LINE & 4 FEET BELOW CURB GRADE EXCEPT AS NOTED.
 - PROVIDE STAKES ON THE PROPERTY LINE OR PROPERTY LINES PRODUCED AT RIGHT ANGLES TO THE SEWER LINE AT THE CENTER LINE OF EACH MANHOLE.
 - NO REPRESENTATIVE OF THE COUNTY ENGINEER WILL SURVEY OR LAY OUT ANY PORTION OF THE WORK.
 - THE PRIVATE ENGINEER SHALL FURNISH THE COUNTY ENGINEER WITH GRADE SHEETS AND STATIONING FOR ALL HOUSE LATERALS AND "T" OR "T" BRANCHES AND SHALL PROVIDE STAKES FOR THEM AT THEIR PROPER LOCATIONS WITH STATIONING PLAINLY MARKED. ALL HOUSE LATERALS SHALL BE CONSTRUCTED IN A STRAIGHT ALIGNMENT AT RIGHT ANGLES FROM THE MAIN LINE SEWER EXCEPT AS SHOWN ON THE PLANS. HOUSE LATERALS FROM CHIMNEYS SHALL NOT HAVE AN ANGLE OF LESS THAN 45° WITH THE MAIN LINE SEWER. ANY CHANGE IN ALIGNMENT SHALL BE REQUESTED IN WRITING BY THE PRIVATE ENGINEER.
 - THE PRIVATE ENGINEER SHALL FURNISH THE HOUSE LATERAL DATA AT THE PROPERTY LINE BELOW THE TOP OF CURB ELEVATION FOR EACH HOUSE LATERAL ON THE GRADE SHEET.
 - NO REVISIONS SHALL BE MADE IN THESE PLANS WITHOUT THE APPROVAL OF THE COUNTY ENGINEER.
 - THE CONTRACTOR SHALL NOTIFY THE CONSTRUCTION DIVISION BY TELEPHONE, MAINROOM 7-4747, EXT. 8152, AT LEAST TWENTY-FOUR HOURS BEFORE STARTING ANY WORK UNDER THIS CONTRACT.
 - ALL STRUCTURES SHALL BE BUILT TO MEET THE REQUIREMENTS OF THE STANDARD SPECIFICATIONS FOR PUBLIC WORKS CONSTRUCTION (1978) WITH THE EXCEPTIONS LISTED HEREIN.
 - "T" OR "T" BRANCHES MAY BE USED FOR CONNECTIONS TO MAINLINE SEWERS EXCEPT AS NOTED.
 - MANHOLE TOPS IN UNIMPROVED AREAS OF WAYS TO BE 24 INCHES ABOVE FINISHED GRADE.
 - USE EXTRA STRENGTH PIPE. ALL PIPE IS STANDARD UNLESS NOTED OTHERWISE.
 - VERTICAL CLAY PIPE JOINTS SHALL BE TYPE "B", "P", OR "S" PER STANDARD SPECIFICATIONS SECTION 308-2.
 - IF A POWER POLE IS WITHIN THREE FEET OF THE SEWER, THE SEWER SHALL BE ENCASED, PER 5-22, TWO FEET ON EACH SIDE FROM THE POINT OF INTERFERENCE.
 - IF DURING THE COURSE OF CONSTRUCTION IT IS DETERMINED THAT THERE IS LESS THAN FOUR FEET OF COVER OVER THE TOP OF A MAIN LINE OR HOUSE LATERAL V.C.P. SEWER WHICH IS NOT INDICATED ON THE PLANS, THE PIPE SHALL BE ENCASED PER 5-22, UNLESS OTHERWISE APPROVED BY THE COUNTY ENGINEER.
 - REINFORCE ALL TRENCHES WITHIN PAVED AREAS TO MEET L.A. COUNTY ROAD DEPT. REQUIREMENTS IN ACCORDANCE WITH PERMITS.
 - SEWERS TO BE TESTED FOR LEAKAGE PER SECTION 306-2.7 OF THE STANDARD SPECIFICATIONS AND SPECIAL PROVISIONS.
 - REFER TO SECTION 710.1.1 OF THE STANDARD SPECIFICATIONS, ENCASEMENT SAFETY CODES.
 - ALL JOINTS BETWEEN CAST IRON PIPE AND VITREOUS CLAY PIPE SHALL BE MADE WITH A RUBBER SLEEVE JOINT, TYPE "C" OR "D", (WITH BUSHING IF NECESSARY) PER STANDARD SPECIFICATIONS, SECTION 308-2.
- THE FOLLOWING LATEST REVISED STANDARD PLANS ON FILE IN THE OFFICE OF THE COUNTY ENGINEER SHALL APPLY IN THE CONSTRUCTION OF THIS PROJECT:

LEGEND

MINIMUM PUBLIC SAFETY REQUIREMENTS	5-7
SEWER MANHOLE	5-8
NON-REINFORCED PRECAST CONCRETE MANHOLE	5-9
REINFORCED PRECAST CONCRETE MANHOLE	5-10
MANHOLE FRAME AND COVER	5-11
STANDARD MANHOLE STEP	5-12
RECORDING FOR SEWER PIPE	5-21
CHANGING AND ENCLOSURE	5-22
WYE OR SUPPORT	5-23
ALLOWABLE TRENCH WIDTHS	5-24

8. FULL COMPLIANCE WITH SEC. 306-1.9.8 OF THE SPECIAL PROVISIONS WILL BE REQUIRED FOR BACKFILL IN STREETS. CERTIFICATION OF BACKFILL COMPLETION AND SEAD EQUIVALENTS BY A QUALIFIED REGISTERED TESTING LABORATORY SHALL BE PROVIDED BY THE CONTRACTOR PRIOR TO THE RESUME OF A CERTIFICATE OF FINAL ACCEPTANCE.

PROFILE, ALIGNMENT AND GRADE OF
SANITARY SEWERS
 CONSTRUCTED IN

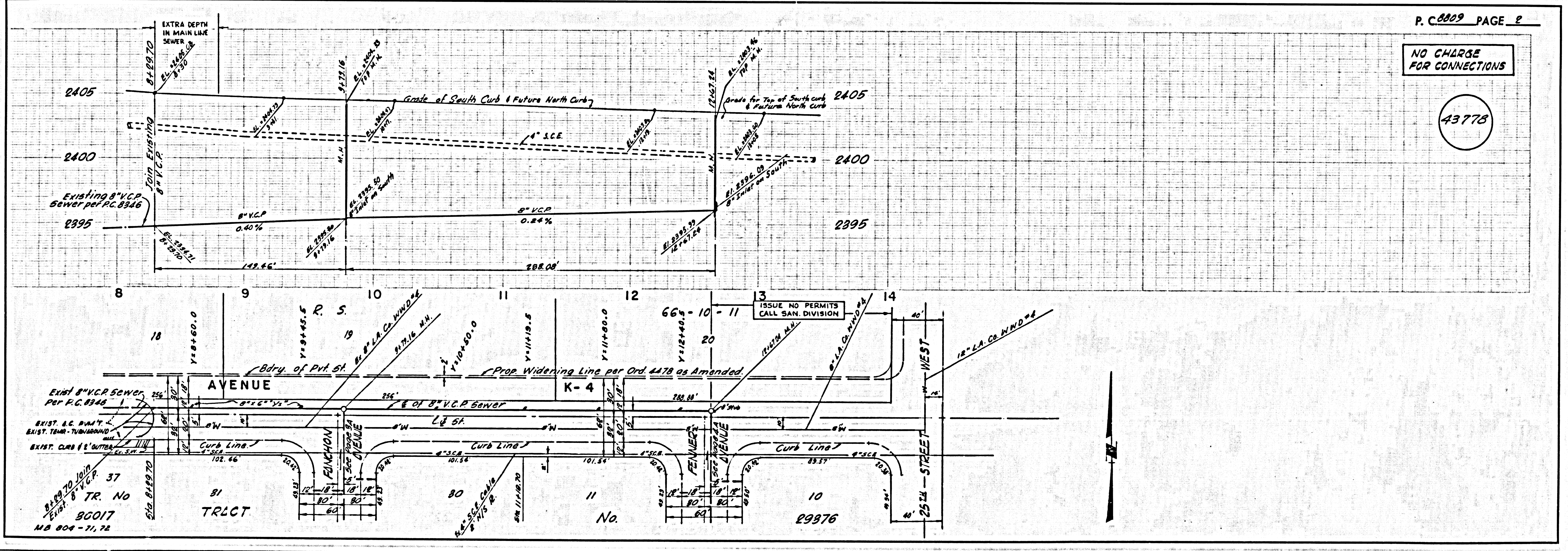
TRACT No. 29376

PRIVATE CONTRACT NO. 8809

W.S. 71-0-5
 3 SHEETS; 5 PAGES
 SCALE: VERT. 1" = 4' HORIZ. 1" = 40' OCTOBER, 1978
 PREPARED IN THE OFFICES OF
NACHAZEL AND NOLLAC
 4818 S. LA PALMA BLVD.
 VANALISE, CALIFORNIA 90008
 CIVIL ENGINEERS
 REG. C. E. NO. 8181

NOTE:
 GRADES TO WHICH THIS IMPROVEMENT IS TO BE CONSTRUCTED ARE SHOWN ON PLANS AND PROFILE GRADE POINTS FOR TOP OF CURB, CENTER LINE OF STREETS, ON CENTER LINE OF ALLEYS ARE SHOWN BY CIRCLES ON PROFILE. AT ALL POINTS BETWEEN REGISTERED POINTS THE GRADE SHALL BE ESTABLISHED SO AS TO CONFORM TO A STRAIGHT LINE BETWEEN SAID REGISTERED POINTS. ELEVATIONS ARE IN FEET ABOVE U.S.C. & G.S. SEA LEVEL DATUM OF 1929.
 WORK SHALL BE CONSTRUCTED ACCORDING TO THE STANDARD SPECIFICATIONS FOR PUBLIC WORKS CONSTRUCTION (1978) WITH THE EXCEPTIONS LISTED HEREIN AND COUNTY ENGINEER SPECIAL PROVISIONS AND THE DEPARTMENT OF SANITARY SERVICES (1978) AND SHALL BE PROVIDED ONLY BY THE PRESENCE OF THE COUNTY ENGINEER.
 BEFORE WORK CAN BE STARTED, THE CONTRACTOR MUST OBTAIN A PERMIT TO EXCAVATE IN COUNTY STREETS FROM THE L.A. COUNTY ROAD DEPT., DISTRICT OFFICE NO. 1, AND AT A FEE TO THE COUNTY ENGINEER, SEE E. NATIONAL HIGHWAY BRIDGE, 818/819/820 OR... ANTELOPE... VALLEY... REGIONAL OFFICE, SUBJECT TO COVER THE COST OF CONSTRUCTION INSPECTION AND RECORD PLANS.
 APPROVAL OF THIS PLAN BY THE COUNTY OF LOS ANGELES DOES NOT CONSTITUTE A REPRESENTATION AS TO THE ACCURACY OF THE LOCATION OR OF THE EXISTENCE OR NON-EXISTENCE OF ANY UNDERGROUND UTILITY PIPE, OR STRUCTURE WITHIN THE LIMITS OF THIS PROJECT. THIS NOTE APPLIES TO ALL PAGES.
 IF WORK IS TO BE DONE ON A STATE HIGHWAY, A PERMIT MUST BE OBTAINED FROM THE STATE OF CALIFORNIA, DIVISION OF HIGHWAYS, 130 SOUTH SPRING STREET, LOS ANGELES, CALIFORNIA.
 THIS DRAWING AND THE DATA HEREON ARE HEREBY MADE A PART OF THE SPECIFICATIONS.
COUNTY OF LOS ANGELES, CALIFORNIA
 HARVEY T. BROWN, COUNTY ENGINEER J. D. PARKHURST, CHIEF ENGINEER
 APPROVED BY *[Signature]* 7/1/78 APPROVED BY *[Signature]*
 REGIONAL ENGINEER DISTRICT OFFICE ENGINEER
 CHECKED BY *[Signature]* 7/1/78
 REG. C. E. NO. 16712

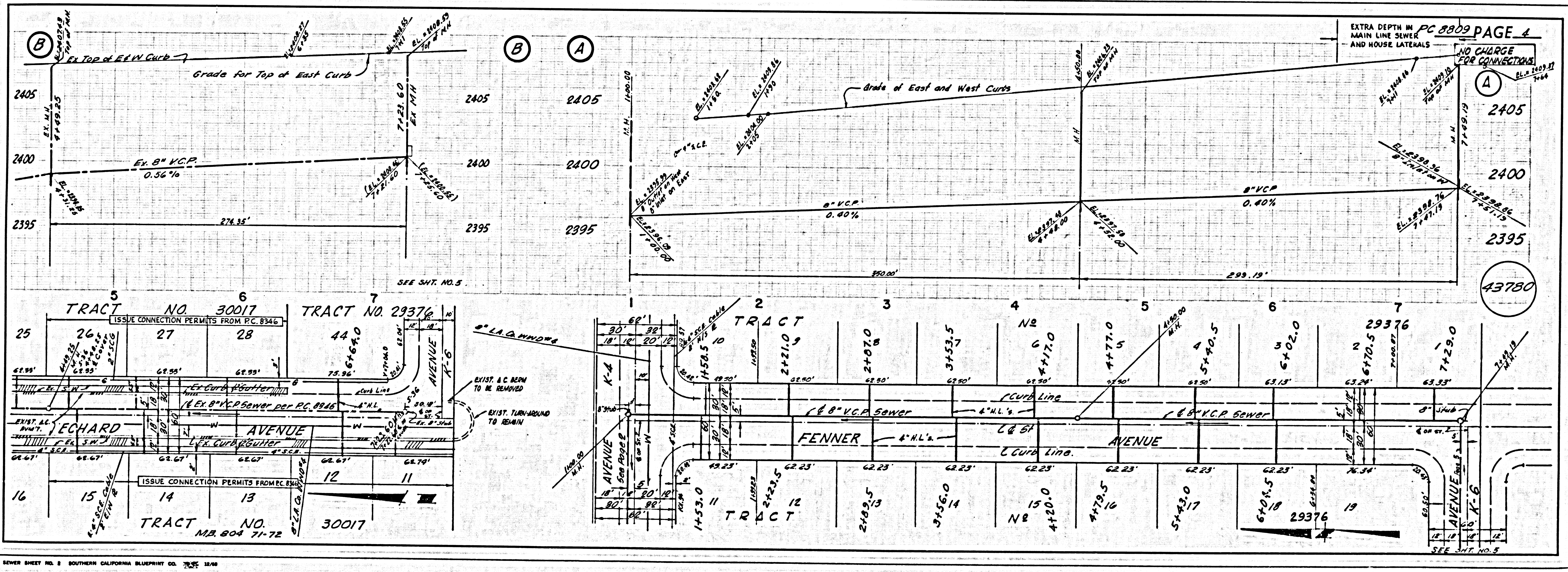
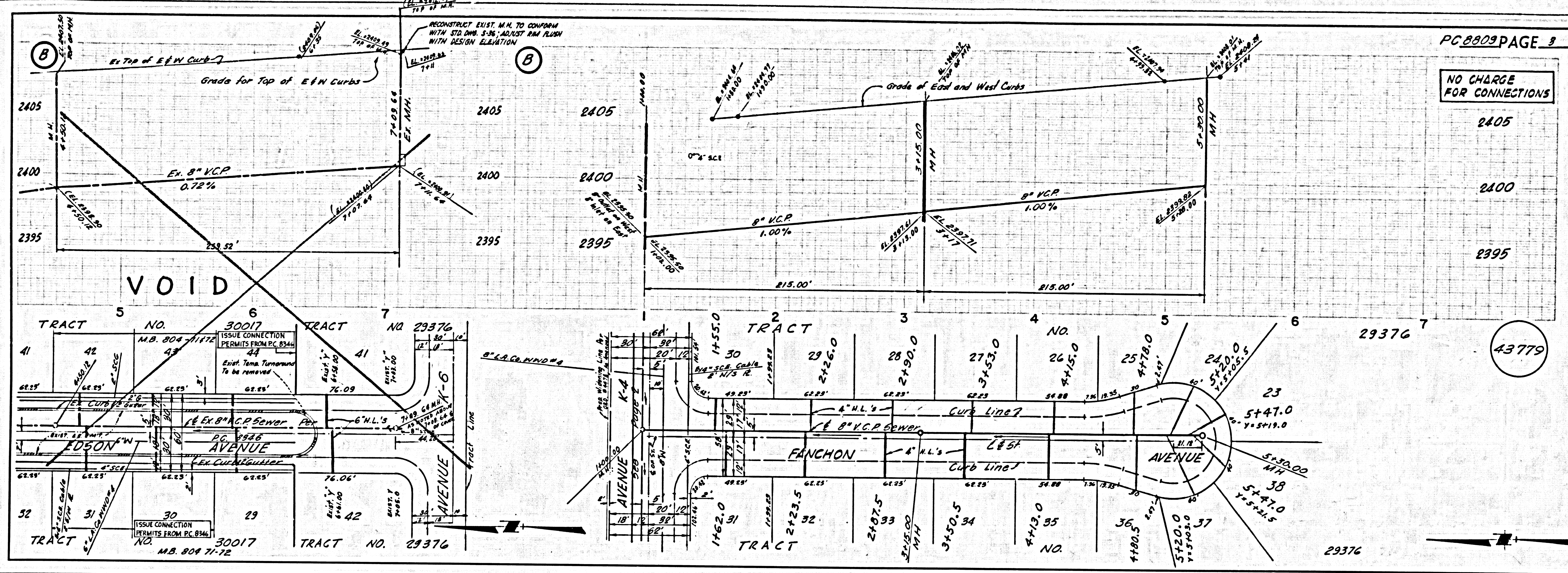
J.N. 0250.02

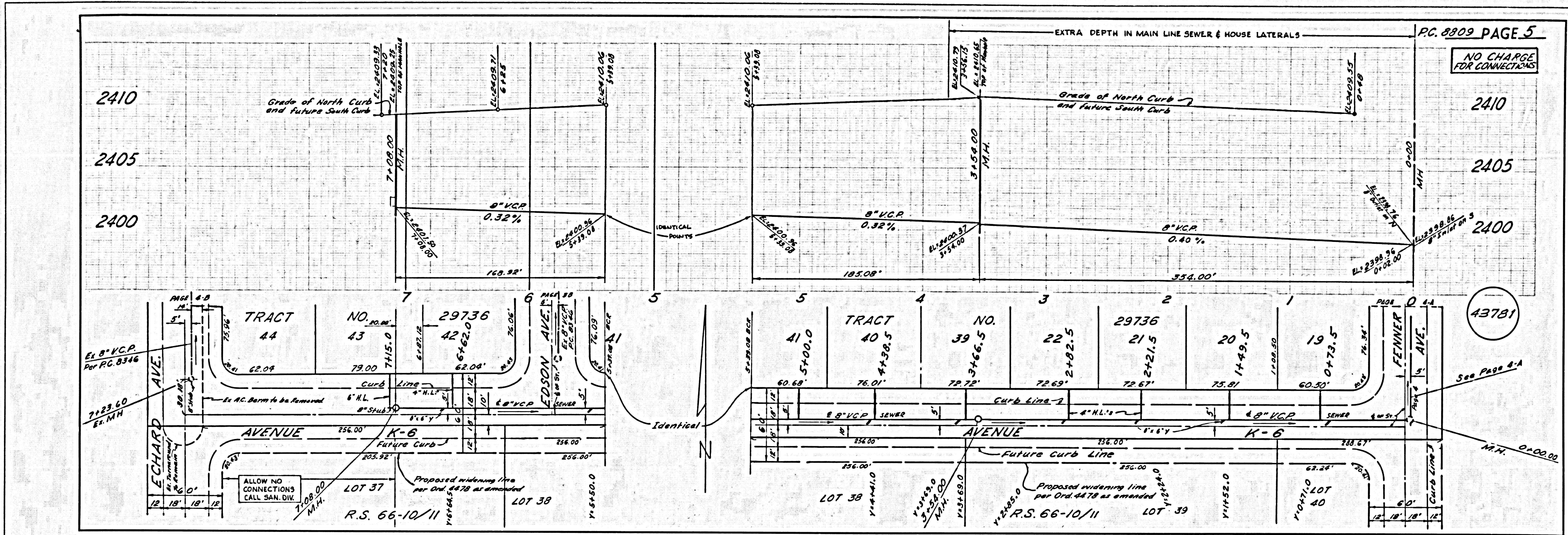


P. C. 8809 PAGE 2

NO CHARGE FOR CONNECTIONS

43778





NO CHARGE FOR CONNECTIONS

43781