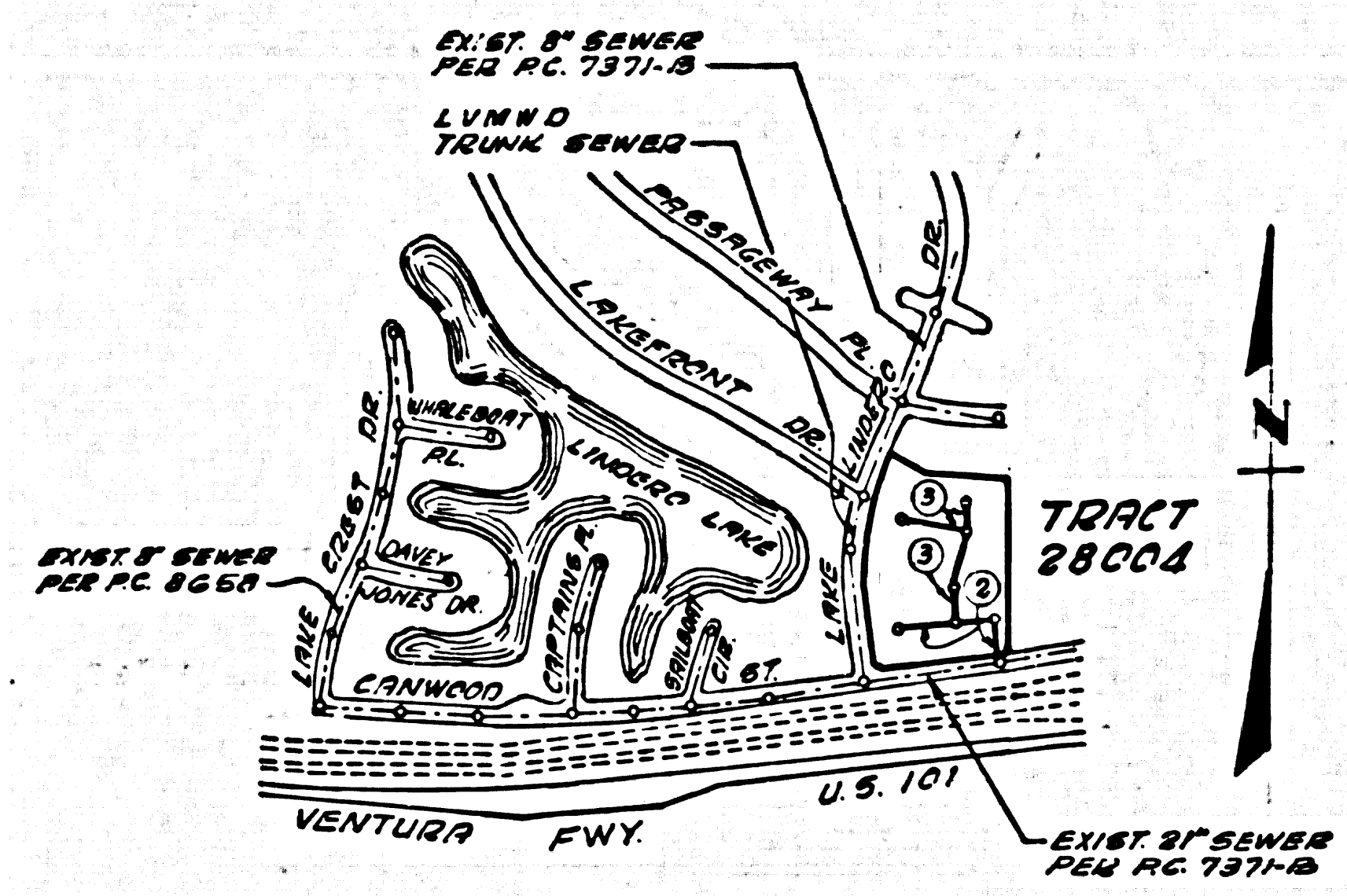


B.M. 65-6A ELEV. 926.571
 SERVICE RD. & SIDE VENTURA FIDELITY 13 MI. E. OF
 LINDEO CANYON RD. 0.75 MI. W. OF REVER ARDRE RD.
 30' W. OF A CURB OF SERVICE RD. 28' S. OF POLY
 #178551 S. SET IN TOP CORN. HERONWALL OF 1905
 CULVERT 1' E. OF W.B.M.D.
 MALIBU QUAD. 1925



INDEX MAP
 Scale: 1" = 600'

NOTE: ① NUMBERS IN CIRCLES INDICATE PAGE NUMBERS

Revision No. 1 Date 2-6-73
 Add Storm Drain & Drainage Channel, Page 3-B;
 Rased Surface Grading from 0+00 to 1+41 on
 Pg 2-B; Sewer grade from 1+29.83 to 3+17.83,
 0+00 to 2+25, 4+00.86 to 3+80.32 on Pages 2A,
 3A & 3B, respectively, increased.
 APPROVED: [Signature] 3/16/73
 Office of County Engineer Date

Revision No. 1 Date 2-6-73
 Add Storm Drain & Drainage Channel, Page 3-B;
 Rased Surface Grading from 0+00 to 1+41 on
 Pg 2-B; Sewer grade from 1+29.83 to 3+17.83,
 0+00 to 2+25, 4+00.86 to 3+80.32 on Pages 2A,
 3A & 3B, respectively, increased.
 APPROVED: [Signature] 3/16/73
 Office of County Engineer Date

- GENERAL NOTES:
- ELEVATIONS ARE IN FEET ABOVE U.S.C. & G.S. SEA LEVEL DATUM OF 1929.
 - NO BYTRENCHES SHALL BE MADE IN THESE PLANS WITHOUT THE APPROVAL OF THE COUNTY ENGINEER.
 - NO MODIFICATION OF THE COUNTY ENGINEER'S DESIGN SHALL BE MADE OR LAY OUT ANY PORTION OF THE WORK.
 - GRADES TO WHICH THIS IMPROVEMENT IS TO BE CONSTRUCTED ARE SHOWN ON PLANS AND PROFILE GRADE POINTS FOR TOP OF CURBS, CENTER LINE OF STREETS, OR CENTER LINE OF ALLEYS ARE SHOWN BY CIRCLES ON PROFILES. AT ALL POINTS BETWEEN BENCH-MARKER POINTS THE GRADE SHALL BE ESTABLISHED SO AS TO CONFORM TO A STRAIGHT LINE BETWEEN SAID BENCHMARKER POINTS.
 - THE PRIVATE ENGINEER SHALL FURNISH THE COUNTY ENGINEER WITH GRADE SHEETS AND STATIONING FOR ALL HOUSE LATERALS AND "T" OR "Y" BRANCHES AND SHALL PROVIDE STAGES FOR THESE AT THEIR PROPER LOCATIONS WITH STATIONING PLAINLY MARKED. ALL HOUSE LATERALS SHALL BE CONSTRUCTED IN A STRAIGHT ALIGNMENT AT RIGHT ANGLES FROM THE MAIN LINE SEWER EXCEPT AS SHOWN ON THE PLANS. HOUSE LATERALS FROM CHIMNEYS SHALL NOT HAVE AN ANGLE OF LESS THAN 45° WITH THE MAIN LINE SEWER. ANY CHANGE IN ALIGNMENT SHALL BE REQUESTED IN WRITING BY THE PRIVATE ENGINEER.
 - THE PRIVATE ENGINEER SHALL FURNISH THE HOUSE LATERAL DITCH AT THE PROPERTY LINE ABOVE THE TOP OF CURB ELEVATION FOR EACH HOUSE LATERAL ON THE GRADE SHEET.
 - BEFORE WORK CAN BE STARTED, THE CONTRACTOR MUST OBTAIN A PERMIT TO EXCAVATE IN COUNTY STREETS FROM THE L. A. COUNTY ROAD DEPT., DISTRICT OFFICE NO. 2, AND PAY A FEE TO THE COUNTY ENGINEER'S OFFICE, COUNTY ENGINEER'S BUILDING, 100 WEST SECOND STREET OR, THE MALIBU REGIONAL OFFICE, TO COVER THE COST OF CONSTRUCTION INSPECTION AND RECORD PLANS.
 - IF WORK IS TO BE DONE IN A STATE HIGHWAY, A PERMIT MUST BE OBTAINED FROM THE STATE OF CALIFORNIA, DIVISION OF HIGHWAYS, 120 SOUTH BRIDGE STREET, LOS ANGELES, CALIFORNIA.
 - APPROVAL OF THIS PLAN BY THE COUNTY OF LOS ANGELES DOES NOT CONSTITUTE A REPRESENTATION AS TO THE ACCURACY OF THE LOCATION OF OR THE EXISTENCE OR NON-EXISTENCE OF ANY UNDERGROUND UTILITY PIPE, OR STRUCTURE WITHIN THE LIMITS OF THIS PROJECT. THIS NOTE APPLIES TO ALL PAGES.
 - REFER TO SECTION 7-18.1.2 OF THE STANDARD SPECIFICATIONS, REGARDING SANITARY DITCHES.

TRACT NO. 28004
 PRIVATE CONTRACT NO. 8815

W.S. 93
 2 SHEETS, 3 PAGES 44088
 SCALE: VERT. 1" = 4'
 HORIZ. 1" = 40'
 AUGUST 22, 1972
 PREPARED IN THE OFFICES OF
 TARIQ M. SHARMA ASSOCIATES, INC.
 2289 S. LINCOLN AVE.
 ANAHEIM, CALIFORNIA 92805 PHONE (714) 774-6160
 BY: [Signature]
 REG. C. E. No. 18418

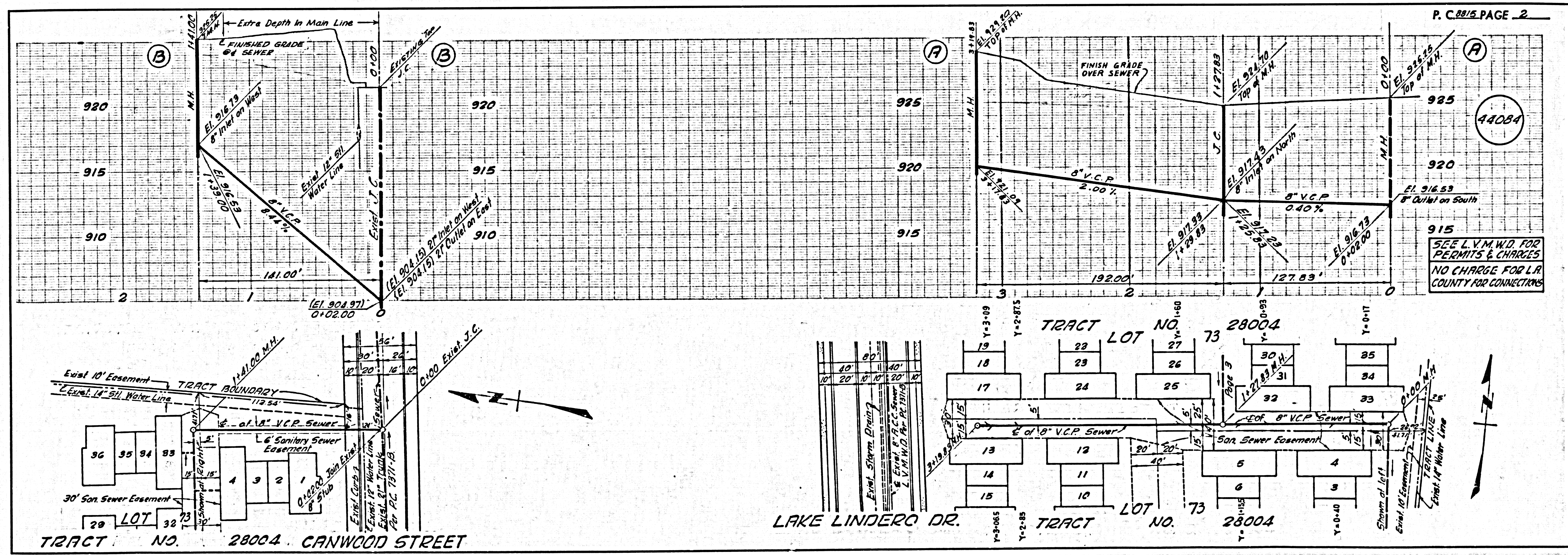
THE FOLLOWING LATEST REVISED STANDARD PLANS ON FILE IN THE OFFICE OF THE COUNTY ENGINEER SHALL APPLY IN THE CONSTRUCTION OF THIS PROJECT.

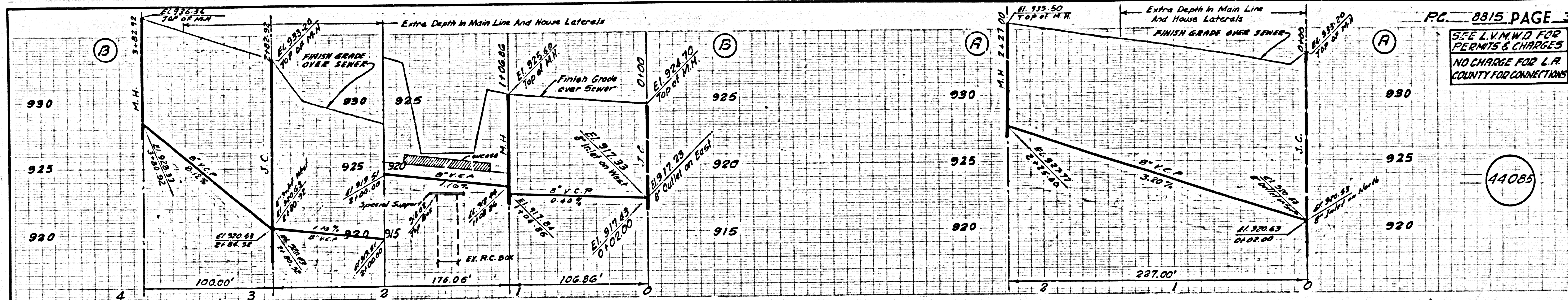
SEWER	5-1
MINIMUM PUBLIC SAFETY REQUIREMENTS	5-2
BRICK MANHOLE	5-3
STANDARD MANHOLE STOP	5-7
BRICKS FOR SEWER PIPE	5-8
CALLINGS AND ENCASEMENT	5-9
TYPE OF THE SUPPORT	5-10
ALLOWABLE TRENCH WIDTHS	5-11
LOCKING MANHOLE FRAME AND COVER	5-12
NON-REINFORCED PRECAST CONCRETE MANHOLE	5-13

- CONSTRUCTION NOTES:
- WORK SHALL BE CONSTRUCTED ACCORDING TO THE STANDARD SPECIFICATIONS FOR PUBLIC WORKS CONSTRUCTION 1976 EDITION WITH THE SUPPLEMENT AND COUNTY ENGINEER SPECIAL PROVISIONS FOR THE CONSTRUCTION OF SANITARY SEWERS DATED APRIL 18, 1972, AND SHALL BE PROSECUTED ONLY IN THE PRESENCE OF THE COUNTY ENGINEER.
 - THE CONTRACTOR SHALL NOTIFY THE CONSTRUCTION DIVISION BY TELEPHONE, ALONG 9-672, EXT. 8138, AT LEAST TWENTY-FOUR HOURS BEFORE STARTING ANY WORK UNDER THIS CONTRACT.
 - HOUSE LATERALS TO BE CONSTRUCTED WITH INVERTS AT PROPERTY LINE 6 FEET BELOW CURB GRADE EXCEPT AS NOTED.
 - WYE OR THE BRANCHES MAY BE USED FOR CONNECTIONS TO MAINLINE SEWERS EXCEPT AS NOTED.
 - ALL STRUCTURES SHALL BE BUILT BRICK MANHOLES PER 5.3 OR PRECAST CONCRETE MANHOLES PER 5.3E, EXCEPT AS NOTED.
 - PROVIDE STAGES ON THE PROPERTY LINE OR PROPERTY LINES PRODUCED AT RIGHT ANGLES TO THE SEWER LINE AT THE CENTER LINE OF EACH MANHOLE.
 - MANHOLE TOPS IN IMPROVED RIGHTS OF WAY TO BE LEVEL WITH FINISHED GRADE.
 - VERTICAL CLAY PIPE JOINTS SHALL BE THE "T" OR "Y" OF THE STANDARD SPECIFICATION SECTION 506-2.
 - IF A FEWER FEET IS WITHIN THREE FEET OF THE SEWER, THE SEWER SHALL BE ENCASED, PER 5.3E, CASE 2, TWO FEET ON EACH SIDE FROM THE POINT OF INTERFERENCE.
 - IF DURING THE COURSE OF CONSTRUCTION IT IS DETERMINED THAT THERE IS LESS THAN FOUR FEET OF COVER OVER THE TOP OF A MAIN LINE OR HOUSE LATERAL V.C.P. SEWER WHICH IS NOT INDICATED ON THE PLANS, THE PIPE SHALL BE ENCASED PER 5.3E, CASE 2X UNLESS OTHERWISE APPROVED BY THE COUNTY ENGINEER.
 - ALL JOINTS BETWEEN CAST IRON PIPE AND VITRIFIED CLAY PIPE SHALL BE MADE WITH A RUBBER SLEEVE JOINT, TYPE "C" OR "W", WITH BUSHING, PER SECTION 506-2.1 FOR STANDARD SPECIFICATIONS, SECTION 506-2.
 - SEWERS TO BE TESTED FOR LEAKAGE PER SECTION 206-2.2.2E OF THE STANDARD SPECIFICATIONS AND SPECIAL PROVISIONS.
 - RESURFACE ALL TRENCHES WITHIN PAVED AREAS TO MEET L.A. COUNTY ROAD DEPT. OR CALIFORNIA STATE HIGHWAY REQUIREMENTS IN ACCORDANCE WITH PERMITS.
 - FULL COMPLIANCE WITH SECTION 206-1.9.3 OF THE SPECIAL PROVISIONS WILL BE REQUIRED AND SHALL BE CERTIFIED BY THE CONTRACTOR'S CERTIFICATION OF ADEQUATE CONNECTION AND SAND EQUIVALENT BY A QUALIFIED REGISTERED TESTING LABORATORY SHALL BE PROVIDED BY THE CONTRACTOR TO THE INSURANCE AS A CERTIFICATE OF FINISH ACCEPTANCE.
 - AT THE SEWER LINE AND WATER LINE CROSSINGS WHERE FINISH GRADE TO SEWER INVERT DEPTH IS LESS THAN 7.5', THE SEWER LINE SHALL BE ENCASED IN CONCRETE 5" EACH WAY.

COUNTY OF LOS ANGELES, CALIFORNIA
 HARVEY T. BARNOT COUNTY ENGINEER LRS VIRSENE'S MUN. WATER DIST.

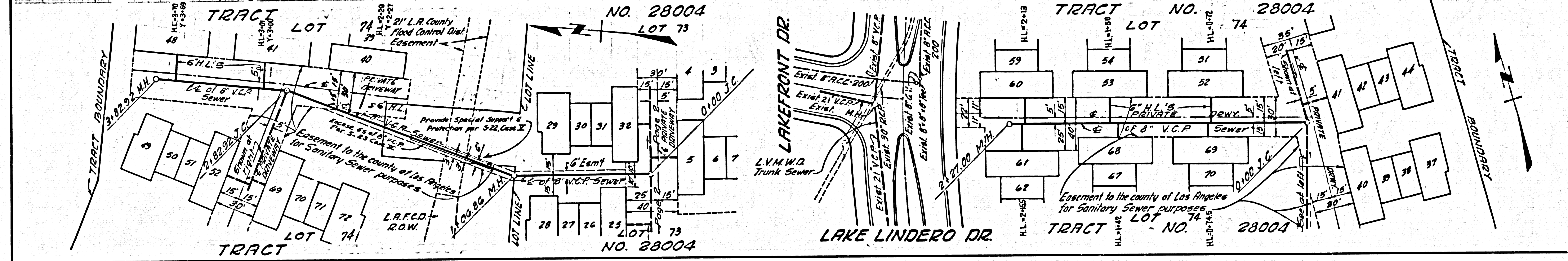
APPROVED: [Signature] REGIONAL ENGINEER DATE 10/26/72
 APPROVED: [Signature] CHIEF ENGINEER DATE
 CHECKED: [Signature] DATE 10/26/72
 REG. C.E. NO. 17722
 CALABASAS BLDG. DIST. 31 I.N. 0250.02





P.C. 8815 PAGE 3
 SEE L.V.M.W.D FOR PERMITS & CHARGES
 NO CHARGE FOR L.A. COUNTY FOR CONNECTIONS

44085



PAGE