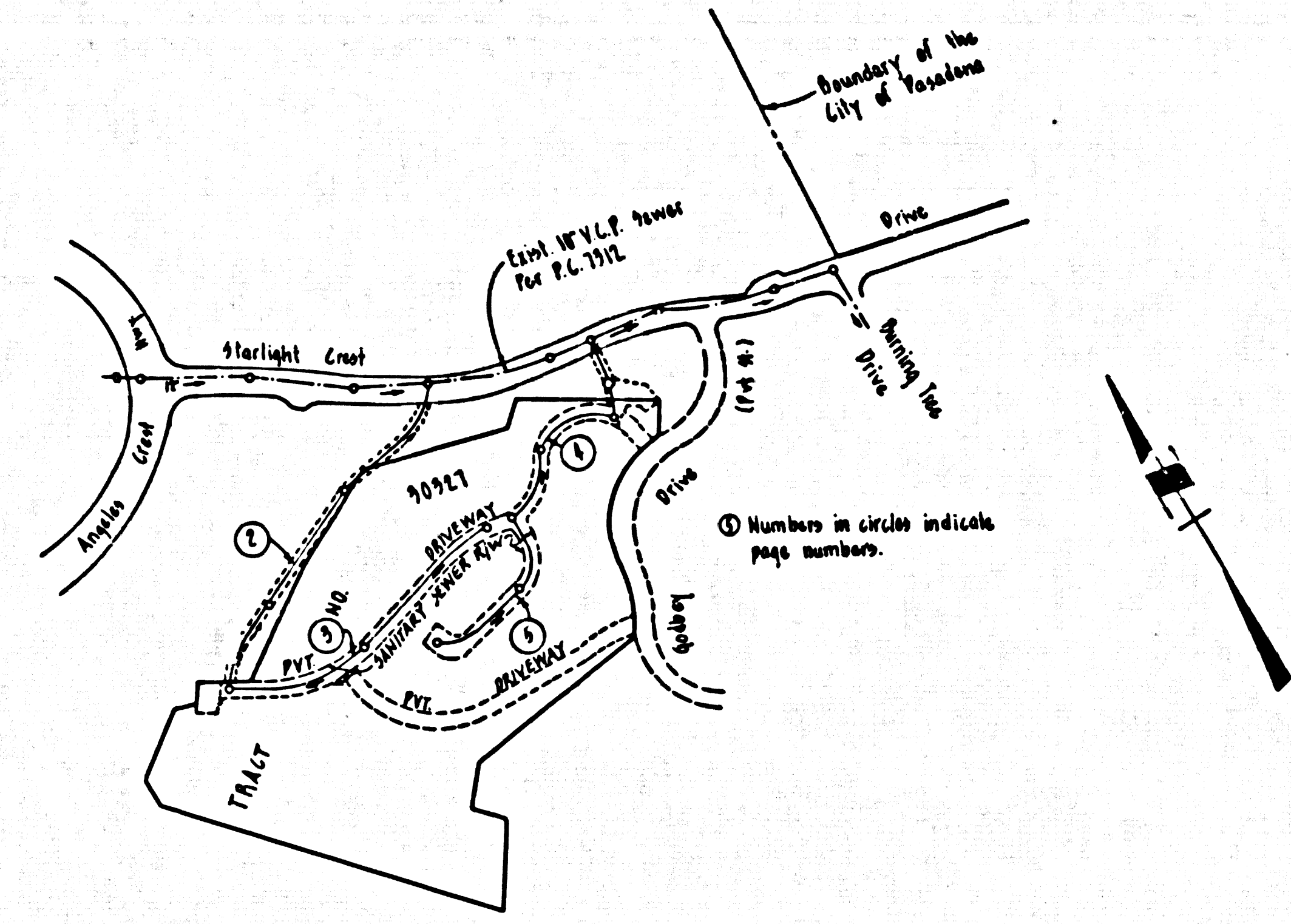


B.M. BY 6547 ELEV. 1741.728
 1.5 MPH IN CO LEFT 4 1/2' @ NE COR ANGELES
 GREAT HWY 4 ENTRANCE TO LA CANADA
 COUNTRY CLUB 4177 N 4 30 FT E. CIL INT.
 LA CANADA QUAD. 19 38

- 6. FIGURES IN CIRCLES AT ENDS OF HOUSE LATERALS INDICATE DEPTH BELOW CURB GRADE OR GRADE OF CENTER LINE.
- 7. FIGURES IN CIRCLES AT ENDS OF HOUSE LATERALS INDICATE HOUSE LATERALS SHALL BE CONSTRUCTED WITH 1/2" RISE PER FOOT TO RIGHT OF WAY LINE.



INDEX MAP
 TRACT NO. 30327
 P.C. 8817
 SCALE: 1" = 400'

No connections for the disposal of industrial wastes shall be made to sewers shown on these drawings without written permission from the Chief Engineer and Central Engineer of the County Sanitation Districts.

County Sanitation Districts shall be notified prior to the following so that required inspection can be made (Phone 999-1000 - 8997704) 765-8665

ACCEPTANCE OF THE PROJECT

DOUBLE SCALE GENERAL NOTES:

1. ELEVATIONS ARE IN FEET ABOVE U.S.C. & G.S. SEA LEVEL DATUM OF 1929.
2. NO REVISIONS SHALL BE MADE IN THESE PLANS WITHOUT THE APPROVAL OF THE COUNTY ENGINEER.
3. NO REPRESENTATIVE OF THE COUNTY ENGINEER WILL SURVEY OR LAY OUT ANY PORTION OF THE WORK.
4. GRADES TO WHICH THIS IMPROVEMENT IS TO BE CONSTRUCTED ARE SHOWN ON PLANS AND PROFILE GRADE POINTS FOR TOP OF CURB, CENTER LINE OF STREETS, OR CENTER LINE OF ALLEYS ARE SHOWN BY CIRCLES ON PROFILES. AT ALL POINTS BETWEEN DESIGNATED POINTS THE GRADE SHALL BE ESTABLISHED SO AS TO CONFORM TO A STRAIGHT LINE DRAWN BETWEEN SAID DESIGNATED POINTS.
5. THE PRIVATE ENGINEER SHALL FURNISH THE COUNTY ENGINEER WITH GRADE SHEETS AND STATIONING FOR ALL HOUSE LATERALS AND "T" OR "Y" BRANCHES AND SHALL PROVIDE STAKES FOR THEM AT THEIR PROPER LOCATIONS WITH STATIONING PLAINLY MARKED. ALL HOUSE LATERALS SHALL BE CONSTRUCTED IN A STRAIGHT ALIGNMENT AT RIGHT ANGLES FROM THE MAIN LINE SEWER EXCEPT AS SHOWN ON THE PLANS. HOUSE LATERALS FROM CHIMNEYS SHALL NOT HAVE AN ANGLE OF LESS THAN 45° WITH THE MAIN LINE SEWER. ANY CHANGE IN ALIGNMENT SHALL BE REQUESTED IN WRITING BY THE PRIVATE ENGINEER.
6. THE PRIVATE ENGINEER SHALL FURNISH THE HOUSE LATERAL DEPTH AT THE "R/W" LINE BELOW THE SURFACE OVER SEWER FOR EACH HOUSE LATERAL ON THE GRADE SHEET.
7. BEFORE WORK CAN BE STARTED, THE CONTRACTOR MUST OBTAIN A PERMIT TO EXCAVATE IN COUNTY STREETS FROM THE L. A. COUNTY ROAD DEPT., DISTRICT OFFICE NO. 2, AND PAY A FEE TO THE SAN GABRIEL VALLEY REGIONAL OFFICE, TO COVER THE COST OF CONSTRUCTION INSPECTION AND SECOND PLANS.
8. IF WORK IS TO BE DONE IN A STATE HIGHWAY, A PERMIT MUST BE OBTAINED FROM THE STATE OF CALIFORNIA, DIVISION OF HIGHWAYS, 120 SOUTH SPRING STREET, LOS ANGELES, CALIFORNIA.
9. APPROVAL OF THIS PLAN BY THE COUNTY OF LOS ANGELES DOES NOT CONSTITUTE A REPRESENTATION AS TO THE ACCURACY OF THE LOCATION OF OR THE EXISTENCE OR NON-EXISTENCE OF ANY UNDERGROUND UTILITY PIPE, OR STRUCTURE WITHIN THE LIMITS OF THIS PROJECT. THIS NOTE APPLIES TO ALL PAGES.
10. REFER TO SECTION 7-184.3 OF THE STANDARD SPECIFICATIONS, REGARDING SAFETY ORDERS.

CONSTRUCTION NOTES:

1. WORK SHALL BE CONSTRUCTED ACCORDING TO THE STANDARD SPECIFICATIONS FOR PUBLIC WORKS CONSTRUCTION 119TH EDITION WITH THE SUPPLEMENTS AND COUNTY ENGINEER SPECIAL PROVISIONS FOR THE CONSTRUCTION OF SANITARY SEWERS DATED 1/15/78. AND SHALL BE PROSECUTED ONLY IN THE PRESENCE OF THE COUNTY ENGINEER.
2. THE CONTRACTOR SHALL NOTIFY THE CONSTRUCTION DIVISION BY TELEPHONE, BRANSON 9-8747, EXT. 81381, AT LEAST TWENTY-FOUR HOURS BEFORE STARTING ANY WORK UNDER THIS CONTRACT.
3. HOUSE LATERALS TO BE CONSTRUCTED WITH INVERTS AT 1/2" LINE 5 FEET BELOW FINISHED GROUND SURFACE EXCEPT IN AREAS WHERE ON THE BRANCHES MAY BE USED FOR CONNECTION TO MANHOLE SEWERS EXCEPT AS NOTED.
4. ALL STRUCTURES SHALL BE EITHER BRICK MANHOLES PER S-23 OR PRECAST CONCRETE MANHOLES PER S-26, EXCEPT AS NOTED.
5. PROVIDE STAKES ON THE "R/W" LINE OR "R/W" LINES PRODUCED AT RIGHT ANGLES TO THE SEWER LINE AT THE CENTER LINE OF EACH MANHOLE.
6. MANHOLE TOPS IN UNIMPROVED RIGHTS OF WAY TO BE SIX INCHES ABOVE FINISHED GRADE.
7. VITRIFIED CLAY PIPE JOINTS SHALL BE TYPE "B", "C", OR "D" PER STANDARD SPECIFICATIONS SECTION 308-3.
8. IF A POWER POLE IS WITHIN THREE FEET OF THE SEWER, THE SEWER SHALL BE ENCASED, PER S-22, CASE 2, TWO FEET ON EACH SIDE FROM THE POINT OF INTERFERENCE.
9. BEFORE THE COMMENCEMENT OF CONSTRUCTION IT IS DETERMINED THAT THERE IS LESS THAN FOUR FEET OF COVER OVER THE TOP OF A MAIN LINE OR HOUSE LATERAL V.C.P. SEWER WHICH IS NOT INDICATED ON THE PLANS, THE PIPE SHALL BE ENCASED PER S-22, CASE 2, UNLESS OTHERWISE APPROVED BY THE COUNTY ENGINEER.
10. ALL JOINTS BETWEEN CLAY PIPE AND VITRIFIED CLAY PIPE SHALL BE MADE WITH A RUBBER SLEEVE JOINT, TYPE "C" OR "D", (WITH BUSHING IF NECESSARY) PER STANDARD SPECIFICATIONS, SECTION 308-2.
11. SEWERS TO BE TESTED FOR LEAKAGE PER SECTION 308-2.2 OF THE STANDARD SPECIFICATIONS AND SPECIAL PROVISIONS, IN ACCORDANCE WITH PERMITS.
12. REINFORCE ALL TRENCHES WITHIN PAVED AREAS TO MEET L.A. COUNTY ROAD DEPT. OR CALIFORNIA STATE HIGHWAY REQUIREMENTS IN ACCORDANCE WITH PERMITS.
13. FULL COMPLIANCE WITH SECTION 308-1.8.3 OF THE SPECIAL PROVISIONS WILL BE REQUIRED FOR BACKFILL IN STREETS. CERTIFICATION OF BACKFILL COMPACTION AND SAND EQUIVALENTS BY A QUALIFIED, REGISTERED TESTING LABORATORY SHALL BE PROVIDED BY THE PERMITTEE PRIOR TO THE ISSUANCE OF A CERTIFICATE OF PARTIAL ACCEPTANCE.
14. MECHANICAL LAMP/FLUORIM JOINTS SHALL BE USED ON ALL MAIN LINE SEWERS.

PROFILE, ALIGNMENT AND GRADE OF
SANITARY SEWERS PAGE 3

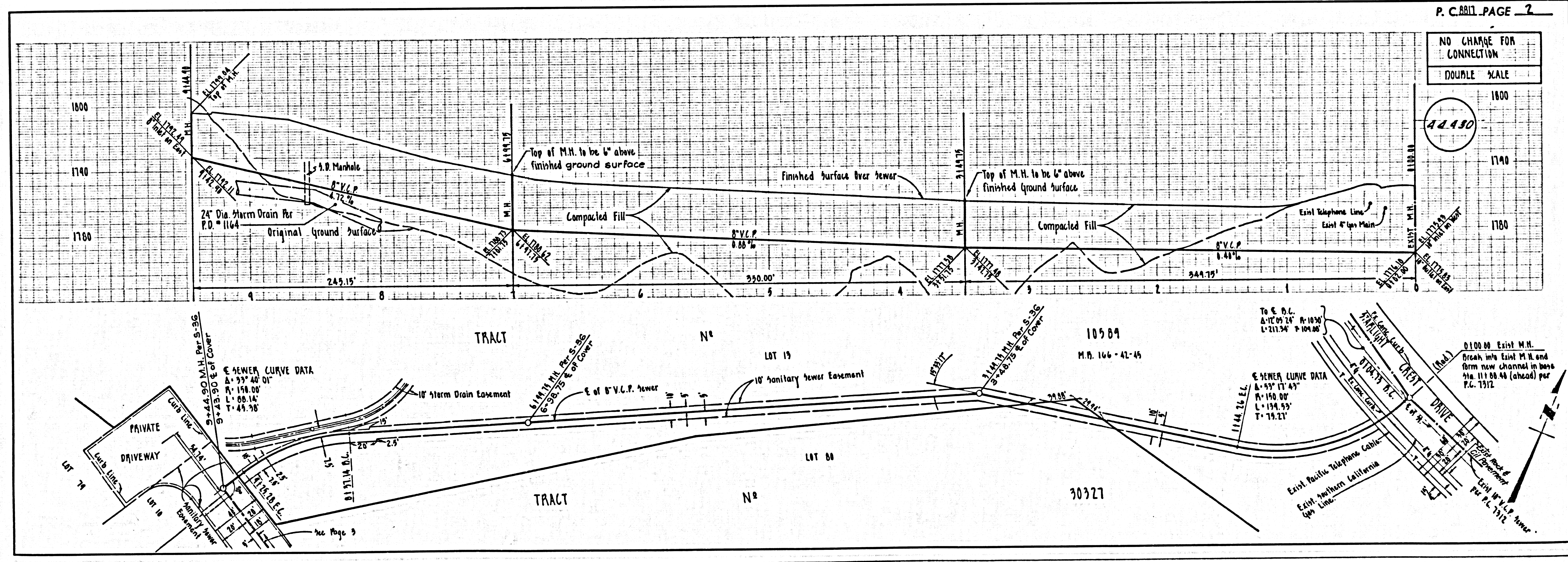
TO BE CONSTRUCTED IN
TRACT NO. 30327
 PRIVATE CONTRACT NO. 8817

W.S. 51, D-5
 9 SHEETS, 9 PAGES
 SCALE: VERT. 1" = 8'
 HORIZ. 1" = 40' JANUARY, 1978 - 44429
 PREPARED IN THE OFFICES OF
 R. M. GALLOWAY & ASSOC., INC.
 1150 VENTURA BOULEVARD, PHOENIX 914-914
 WOODLAND HILLS, CALIFORNIA 91364
 BY: [Signature] REG. C. E. No. 21,762

THE FOLLOWING LATEST REVISED STANDARD PLANS ON FILE IN THE OFFICE OF THE COUNTY ENGINEER SHALL APPLY IN THE CONSTRUCTION OF THIS PROJECT.

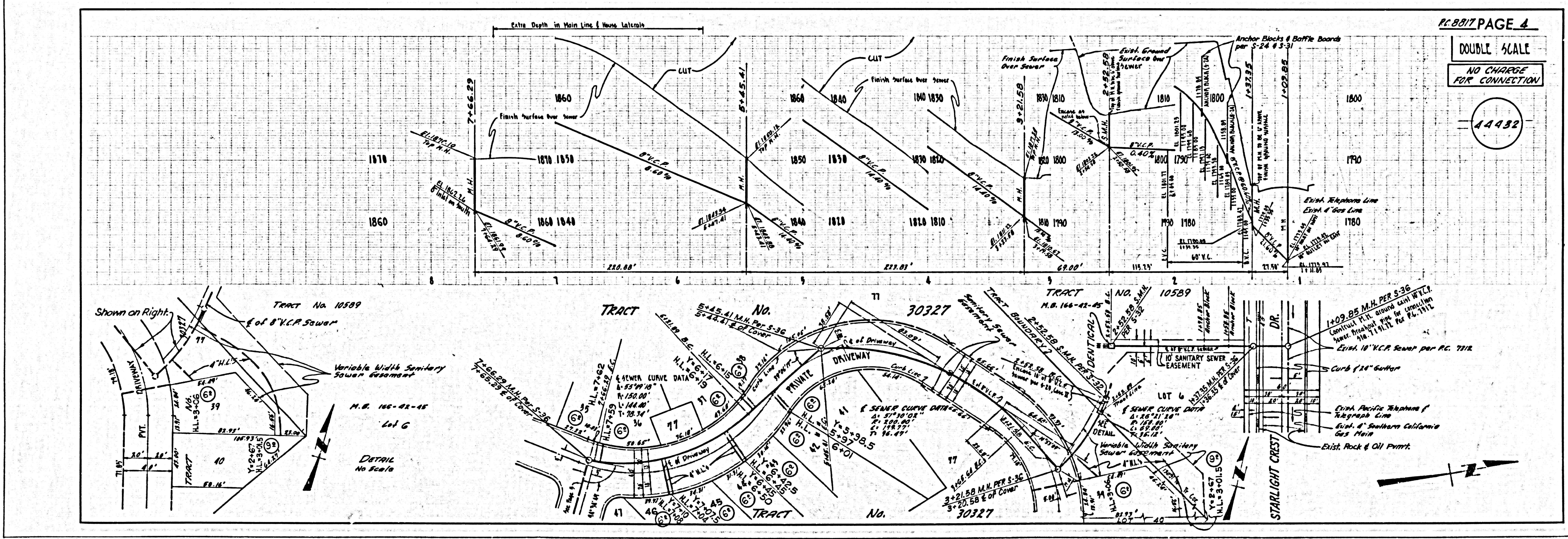
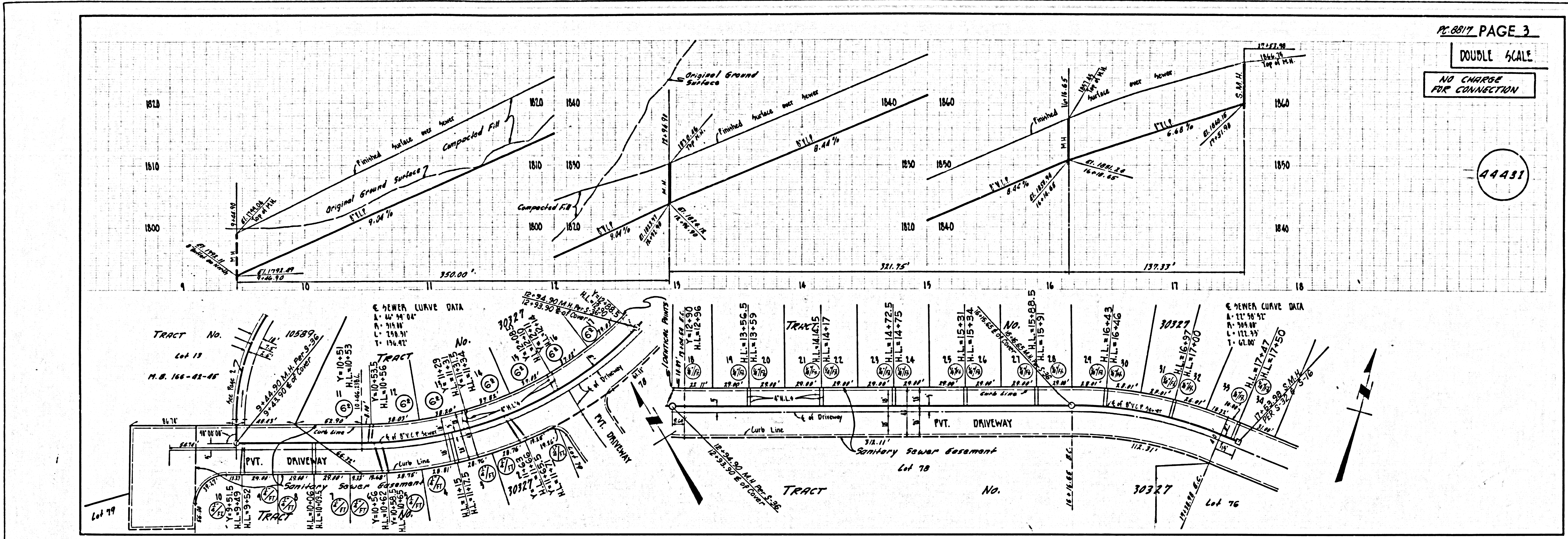
LEGEND	NO.
MINIMUM PUBLIC SAFETY REQUIREMENTS	S-2
BRICK MANHOLES	S-23
STANDARD MANHOLE STEP	S-27
BRIDGING FOR SEWER PIPE	S-29
CRACKING AND ENCASEMENT	S-30
WYE OR TEE SUPPORT	S-31
ADJUSTABLE SERVICE VALVE	S-32
LOCKING MANHOLE FRAME AND COVER	S-33
NON-REINFORCED PRECAST CONCRETE MANHOLE	S-26
RECTANGULAR SHALLOW MANHOLE	S-17
RECTANGULAR MANHOLE FRAME AND COVER	S-18
PRECAST CONCRETE SHALLOW MANHOLE	S-25

COUNTY OF LOS ANGELES, CALIFORNIA
 HARVEY T. BRANDT, COUNTY ENGINEER JOHN D. PARKHURST, CHIEF ENGINEER
 APPROVED [Signature] 5-11-78 APPROVED [Signature] 5-11-78
 REGIONAL ENGINEER (DATE) OFFICE ENGINEER (DATE)
 CHECKED [Signature] 5/11/78
 REG. C. E. NO. 10553
 MONTANA BLDG. DIST. 31 J. N. 0150.02



P. C. 8817 PAGE 2

NO CHARGE FOR CONNECTION
 DOUBLE SCALE
 44430



DOUBLE SCALE

NO CHANGE FOR CONNECTION

