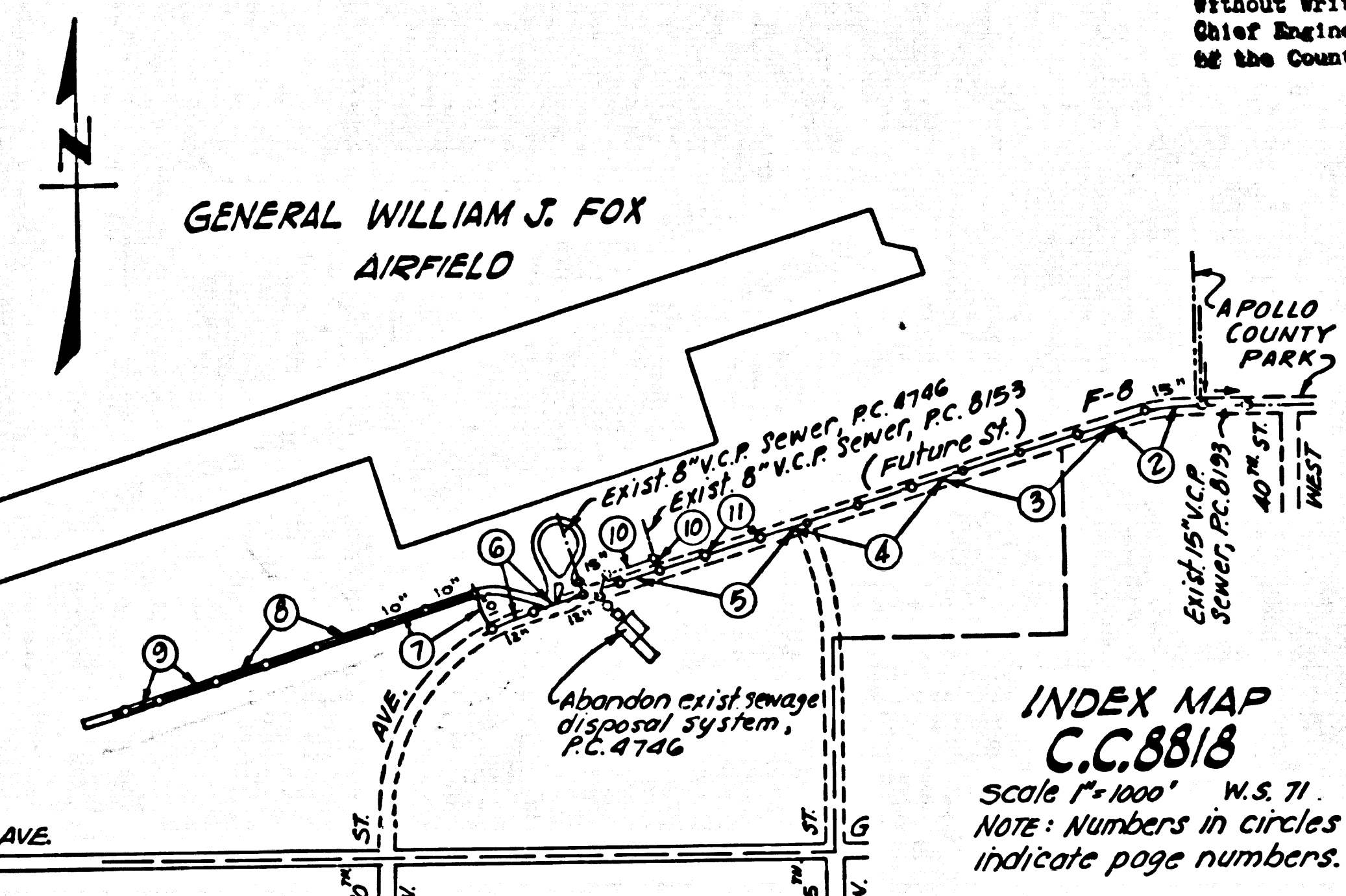


B.M. AVA-3 ELEV. 2333.600
 AVE. F-8 & 45th St. West
 40 ft. N.B. & intersection
 A.C.S. Mon. (Flush) F.B. 2600-143

REVISION NO. 1 DATE FEB. 1972
 REALIGNMENT OF SEWER ON PAGE 6 BETWEEN
 STATIONS 150+95.82 AND 157+83.31.
 EXTENSION OF SEWER ON PAGE 7-A.
 APPROVED *Ray L. Anderson* 2-18-72
 OFFICE OF COUNTY ENGINEER DATE



LANCASTER BUILDING DISTRICT NO. 8

THE CONTRACTOR SHALL MAINTAIN SEWER SERVICE AT ALL TIMES DURING CONSTRUCTION OF MAIN LINE SEWERS.
 IF DURING SEWER CONSTRUCTION, GROUND WATER IS ENCOUNTERED, THE ALLOWABLE INFILTRATION SHALL NOT EXCEED 200 GALLONS PER INCH DIAMETER (OF PIPE), PER MILE, PER DAY.
 THE CONTRACTOR SHALL NOTIFY THE MECHANICAL DEPARTMENT, MR. BEN SANCHEZ, BY TELEPHONE (805) 948-8581, EXT. 336 AT LEAST 24 HOURS BEFORE STARTING ANY WORK UNDER THIS PROJECT.

County Sanitation Districts shall be notified prior to the following so that required inspection can be made (Phone 337-1025 & 638-1181)

ACCEPTANCE OF THE PROJECT
 No connections for the disposal of industrial wastes shall be made to sewers shown on these drawings without written permission from the Chief Engineer and General Manager of the County Sanitation Districts.

NOTICE TO CONTRACTOR

THE EXISTENCE AND LOCATION OF ANY UNDERGROUND UTILITY OR STRUCTURES SHOWN ON THESE PLANS ARE OBTAINED BY A SEARCH OF THE AVAILABLE RECORDS. TO THE BEST OF OUR KNOWLEDGE, THERE ARE NO EXISTING UTILITIES EXCEPT AS SHOWN.
 THE CONTRACTOR IS REQUIRED TO TAKE PRECAUTIONARY MEASURES TO PROTECT THE UTILITY LINES SHOWN AND ANY OTHER LINES NOT OF RECORD OR NOT SHOWN ON THIS DRAWING.

COLLECT CHARGES AS INDICATED

GENERAL NOTES:
 REFER TO SECTION 7-10-41 OF STANDARD SPECIFICATIONS REGARDING SAFETY ORDERS.
 ALL MANHOLES SHALL BE EITHER BRICK PER 3-3 OR PRECAST CONCRETE PER 3-2, EXCEPT AS NOTED.
 "T" OR "Y" BRANCHES MAY BE USED FOR CONNECTIONS TO MAIN LINE SEWER, EXCEPT AS NOTED.
 VITRIFIED CLAY PIPE JOINTS SHALL BE TYPE "T", "Y", OR "O" PER SECTION 306-1 OF STANDARD SPECIFICATIONS.
 ALL JOINTS BETWEEN CAST IRON PIPE AND VITRIFIED CLAY PIPE SHALL BE MADE WITH A RUBBER SLEEVE JOINT, TYPE "C" OR "D" (WHICH IS NECESSARY PER SECTION 306-2 OF STANDARD SPECIFICATIONS).
 SEWERS TO BE TESTED FOR LEAKAGE PER SECTION 306-14 OF STANDARD SPECIFICATIONS AND SPECIAL PROVISIONS.
 IF A POWER POLE IS WITHIN THREE FEET OF THE SEWER, THE SEWER SHALL BE ENCASED, PER 3-23 CASE II, TWO FEET ON EACH SIDE FROM THE POINT OF INTERFERENCE.

STREET RESURFACING:
 STREET RESURFACING METHODS SHALL BE IN ACCORDANCE WITH SECTION 306-112.0 OF THE SPECIAL PROVISIONS.
 FINAL STREET RESURFACING IN ANY LOCATION SHALL BE COMPLETED WITHIN 30 DAYS AFTER COMPLETION OF TRENCH BACKFILL.
 THE RESURFACING AREA SHALL BE SEALED WITH 1/2 INCHES ON 1/4 INCH CEMENTER ROCK.
 RESURFACING SCHEDULE RESURFACE TRENCH WITHIN PAVED AREA WITH TYPE "II" ASPHALTIC CONCRETE 3 INCHES IN THICKNESS ON 6 INCHES OF AGGREGATE BASE MATERIALS, EXCEPT AS NOTED.

NO REVISIONS SHALL BE MADE IN THESE PLANS WITHOUT THE APPROVAL OF THE COUNTY ENGINEER.
 USE LOCKING MANHOLE FRAMES AND COVERS PER S-35, EXCEPT AS NOTED.
 PRIOR TO TRENCH EXCAVATION, THE CONTRACTOR SHALL SUBMIT TO AND OBTAIN APPROVAL FROM THE COUNTY ENGINEER OF A DETAILED PLAN SHOWING THE DESIGN OF SHORING, BRACING, SLOPING OR OTHER PROVISIONS FOR WORKER PROTECTION FROM THE HAZARD OF COLLAPSE. IF SUCH PLAN VARIES FROM THE SHORING SYSTEM STD'S ESTABLISHED BY THE CONSTRUCTION SAFETY ORDERS, IT SHALL BE PREPARED BY A REGISTERED CIVIL OR STRUCTURAL ENGINEER.

THE FOLLOWING PER STD. PLANS ON FILE WITH THE CO. ENGR. SHALL APPLY ON THIS PROJECT:
 LEGEND S-35
 MINIMUM PUBLIC SAFETY REQUIREMENT S-36
 BRICK MANHOLE S-37
 MANHOLE STEP S-38
 BEDDING FOR SEWER PIPE S-39
 SPECIAL SUPPORT AND PROTECTION S-40
 GRADING AND INCAUSEMENT S-25
 STANDARD TYPE OF THE SUPPORT S-26
 ALLOWABLE TRENCH WIDTHS S-27
 LOCKING MANHOLE FRAME AND COVER S-35
 NON-REINFORCED PRECAST CONCRETE MANHOLE S-36

CONTRACTOR SHALL MAINTAIN ONE LANE OPEN TO TRAFFIC AT ALL TIMES DURING CONSTRUCTION.
 THE UNDERGROUND UTILITY COMPANIES WITHIN THE LIMITS OF THIS PROJECT ARE AS FOLLOWS:
 (1) COUNTY OF LOS ANGELES MECHANICAL DEPARTMENT.
 (2) SOUTHERN CALIFORNIA EDISON CO.
 (3) SOUTHERN CALIFORNIA GAS CO.

J.N. 7441.51 PAGE 1
CASH CONTRACT NO. 8818

SANITARY SEWERS
 CONSTRUCTED FOR
FOX AIRFIELD
GRAVITY INTERCEPTOR SEWER
 AND OTHER RIGHTS OF WAY

6 SHEETS, 11 PAGES
 SCALE VERT. 1"=8'
 HORIZ. 1"=40'
 JANUARY, 1973

COUNTY OF LOS ANGELES, CALIFORNIA
 HARVEY T. BRANDT COUNTY ENGINEER

APPROVED *RmCon* 4-16-73
 SANITATION ASST. DIVISION ENGINEER DATE
 DESIGNED *Ray L. Anderson* DATE 2-18-72
 REG. C. E. NO. 104437

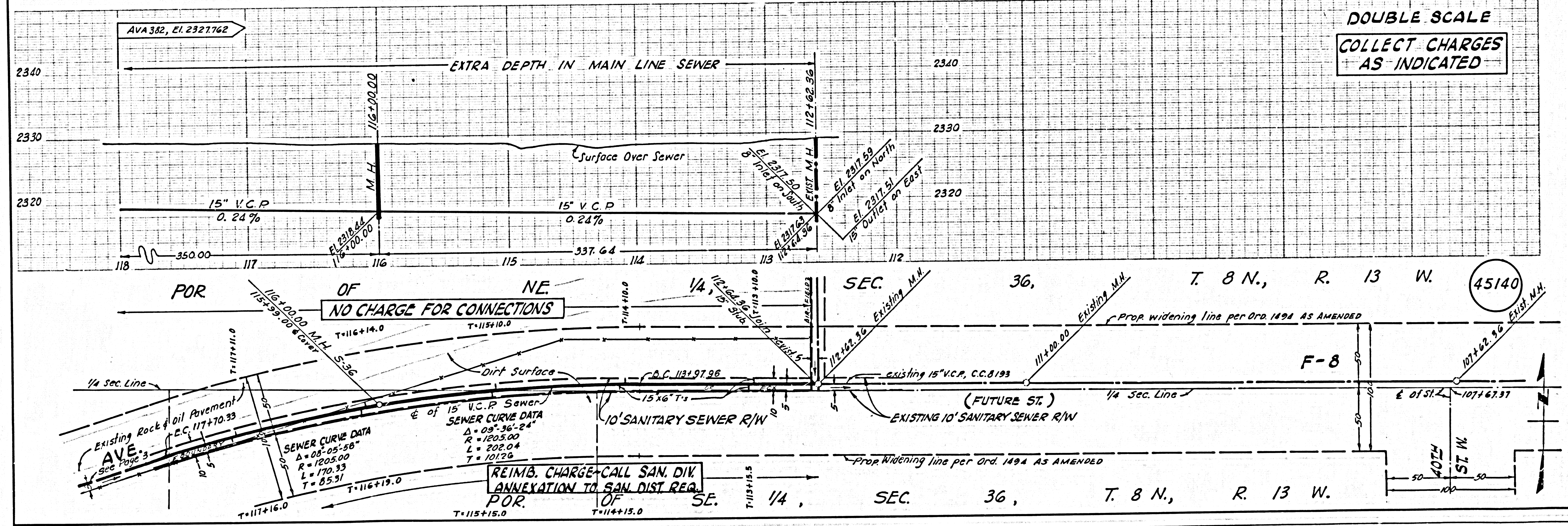
FRED G. TAPLIN JOHN D. PARKHURST
 CHIEF, AVIATION DIVISION CHIEF ENGINEER OF COUNTY
 SANITATION DISTRICT NO. 8
 APPROVED *Fred G. Taplin* APPROVED *John D. Parkhurst*
 CHIEF ENGINEER CHIEF ENGINEER

NOTES:
 WORK SHALL BE CONSTRUCTED ACCORDING TO THE STANDARD SPECIFICATIONS FOR PUBLIC WORKS CONSTRUCTION (1972 EDITION) WITH 1974 SUPPLEMENTS AND COUNTY ENGINEER SPECIAL PROVISIONS FOR THE CONSTRUCTION OF SANITARY SEWERS DATED 10/1/74 AND SHALL BE PROTECTED ONLY IN THE PRESENCE OF THE COUNTY ENGINEER.
 THE CONTRACTOR SHALL NOTIFY THE DESIGN DIVISION BY TELEPHONE 974-3283 AT LEAST 24 HOURS BEFORE STARTING ANY WORK UNDER THIS CONTRACT.
 GRADES TO WHICH THIS IMPROVEMENT IS TO BE CONSTRUCTED ARE SHOWN ON PLANS AND PROFILES. GRADE POINTS FOR TOP OF CURB, CENTER LINE OF STREET OR CENTER LINE OF ALLEY ARE SHOWN BY CIRCLES ON PROFILES. AT ALL POINTS BETWEEN DESIGNATED POINTS THE GRADE SHALL BE ESTABLISHED SO AS TO CONFORM TO A STRAIGHT LINE DRAWN BETWEEN SAID DESIGNATED POINTS.
 ELEVATIONS ARE IN FEET ABOVE U.S.C. & G.S. SEA LEVEL DATUM OF 1929.
 THIS DRAWING AND THE DATA HEREON ARE HEREBY MADE A PART OF THE SPECIFICATIONS.

| | | | | | |
|-------------------------|-------------------|---------|-------------|------------|--------|
| LAYOUT | W. ESQUER | 12-1972 | CHECKED | J. MOCIANO | 1-3-73 |
| TRACED | W. ESQUER | 12-1972 | MAINTENANCE | | |
| F.B.'s | 2690, 3440 & 3474 | | A.B. | W.S. 71 | |
| BUILDING DISTRICT NO. 8 | | | | | |

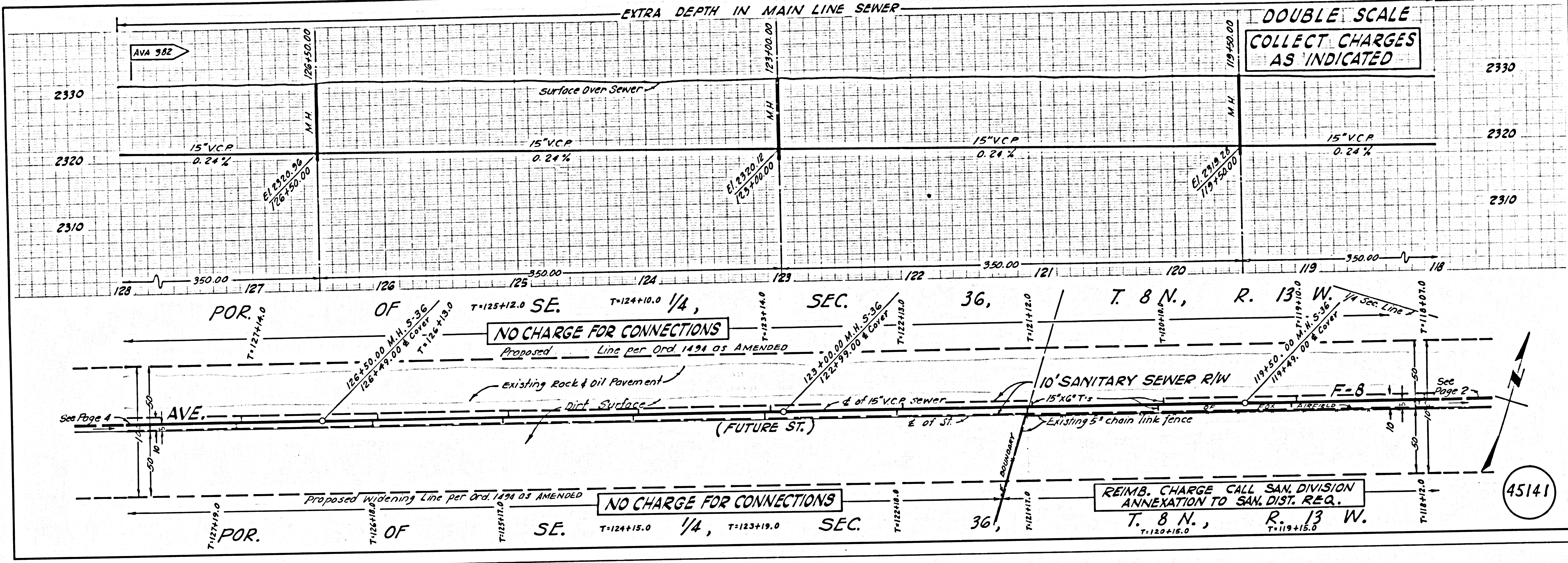
C.C. 8818 PAGE 2

DOUBLE SCALE
COLLECT CHARGES AS INDICATED

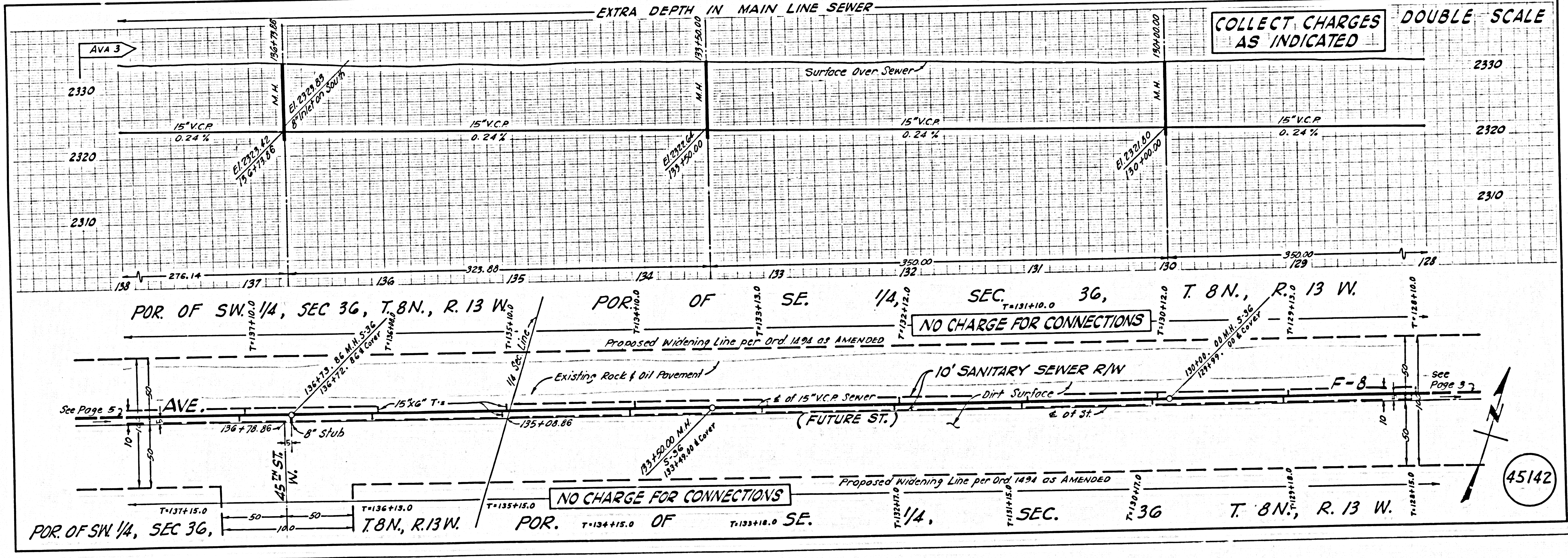


REIMB. CHARGE-CALL SAN. DIV.
 ANNEXATION TO SAN. DIST. REG.
 POR. OF SE. 1/4, SEC. 36, T. 8 N., R. 13 W.

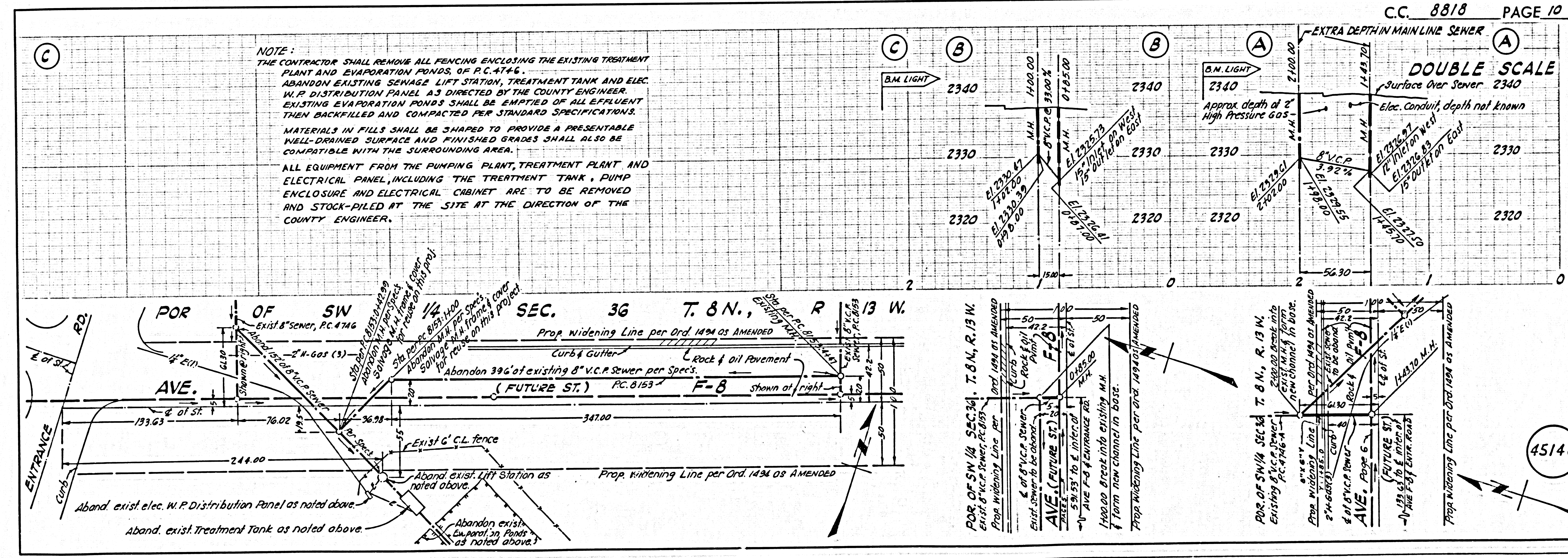
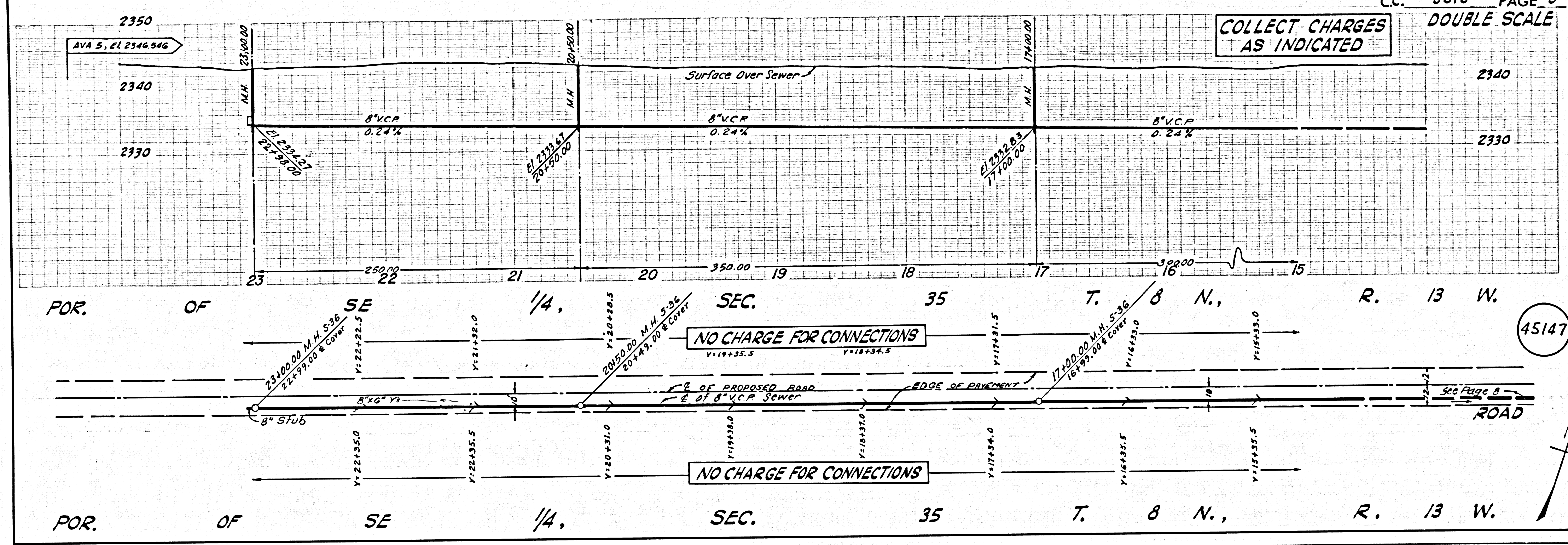
45140



45141



45142



B.M. BL 608 ELEV. 1216.346

U.S.C. 1855: Mon. & and bridge 22-16 over Placerita Creek 3' N. of S. and Co. 18 E. of S. San Fernando Rd. 10' 1/2" N. of Newhall Bldg. District (S 270 1852) NEWHALL QUAD. 19 62

LOTS 23, 24, 25 ARE RECREATION OR PARK LOTS AND ARE NOT SERVED WITH HOUSE LATERALS

NO SPECIAL BACKFILL IN DESIGNATED AREAS

(1) BACKFILL TRENCH AND REPLACE OTHER EARTH REMOVED SO AS TO ACHIEVE THE NATURAL OR FINISHED GRADES AND SLOPES SHOWN ON THE GRADING PLAN APPROVED FOR THIS DEVELOPMENT BY THE BUILDING AND SAFETY DIVISION. (2) ALL BACKFILL AND EARTH REPLACED SHALL BE COMPACTED TO A MINIMUM OF 90% OF MAXIMUM DENSITY PER ASTM STANDARD METHOD OF TEST D 1557-57 AS MODIFIED ACCEPTANCE CERTIFICATION OF SUCH COMPACTION SHALL BE SUBMITTED TO THE CONSTRUCTION DIVISION.

NOTICE TO CONTRACTOR

The existence and location of any underground pipes or structures shown on these plans were obtained by a search of available records. To the best of our knowledge there are no existing utilities except as shown on these plans. The contractor is required to take precautionary measures to protect the existing utility lines and any lines not of record or not shown on these plans.

No excavations for the disposal of industrial waste shall be made to sewers shown on these drawings without written permission from the Chief Engineer and General Manager of the County Sanitation Districts.

NOTE

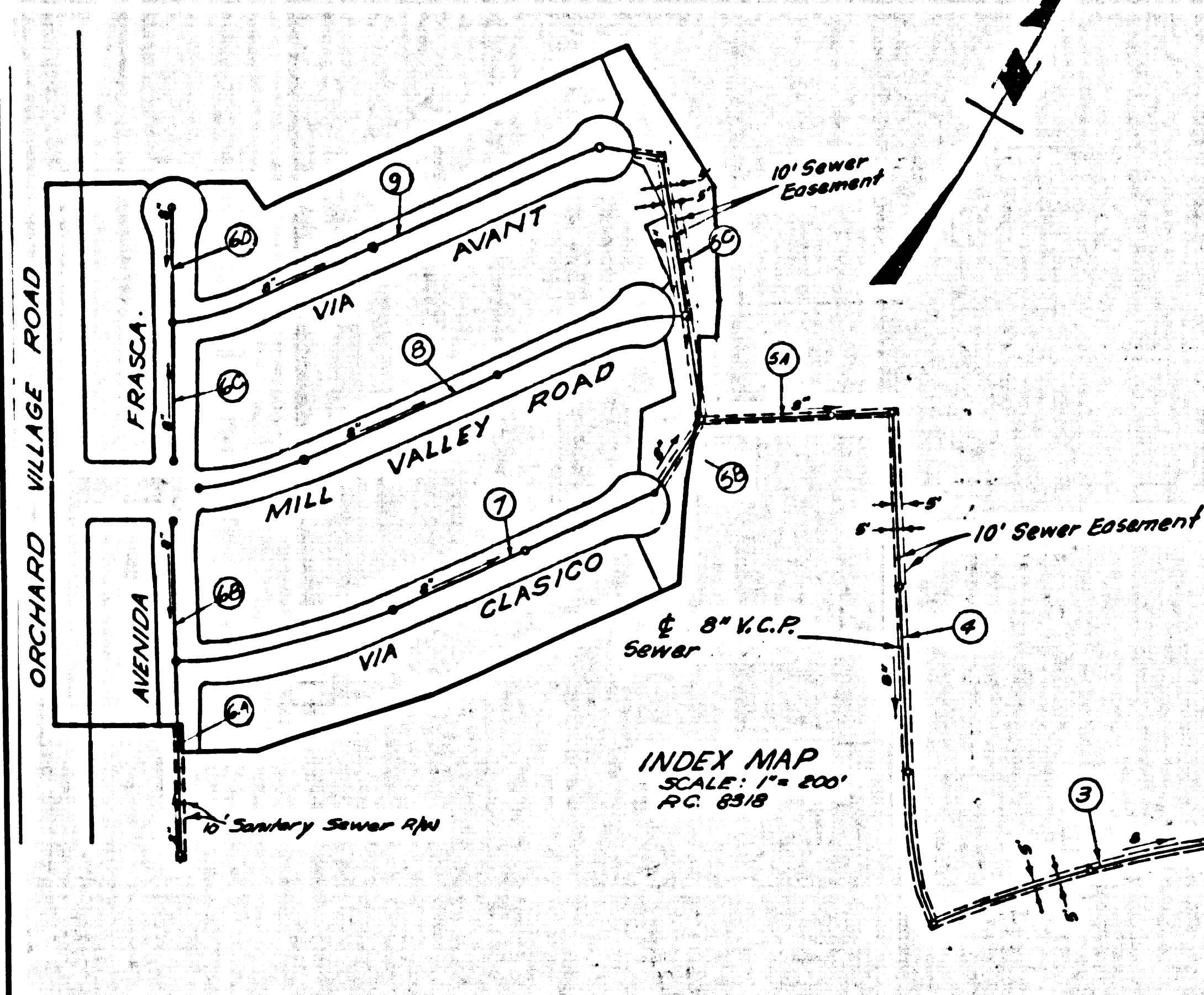
1. Numbers Shown in Circles Indicate Pipe Material of Plans.

County Sanitation Districts shall be notified prior to the following of that required inspection can be made (Phone 337-1028)

Government of maintenance of manhole as Electric Trunk sewer.

Acceptance of the project.

COLLECT CHARGES AS INDICATED



NEWHALL BLDG. DIST. NO. 82

PROFILE, ALIGNMENT AND GRADE OF SANITARY SEWERS PAGE 1

TRACT N° 30601 AND OTHER RIGHTS OF WAY

PRIVATE CONTRACT NO. 83/8

5 SHEETS; 9 PAGES SCALE: HORIZ. 1" = 40' VERT. 1" = 4' DATE: OCT. 1970 PREPARED IN THE OFFICES OF: Siskind Engineering Associates, Inc. 3248 WILSON, CALIFORNIA 91401 REG. C. E. NO. 9552

- NOTES: 1. HOUSE LATERALS TO BE CONSTRUCTED WITH INVERTS AT PROPERTY LINE 6 FEET BELOW CURB GRADE EXCEPT AS NOTED. 2. SINKING STAKES ON THE PROPERTY LINE OR PROPERTY LINES PRODUCED AT RIGHT ANGLES TO THE SEWER LINE AT THE CENTER LINE OF EACH MANHOLE. 3. NO REPRESENTATIVE OF THE COUNTY ENGINEER WILL SURVEY OR LAY OUT ANY PORTION OF THE WORK. 4. THE PRIVATE ENGINEER SHALL FURNISH THE COUNTY ENGINEER WITH GRADE SHEETS AND STATIONING FOR ALL HOUSE LATERALS AND "T" OR "T" BRANCHES AND SHALL PROVIDE STAKES FOR THEM AT THEIR PROPER LOCATIONS WITH STATIONING PLAINLY MARKED. ALL HOUSE LATERALS SHALL BE CONSTRUCTED IN A STRAIGHT ALIGNMENT AT RIGHT ANGLES FROM THE MAIN LINE SEWER EXCEPT AS SHOWN ON THE PLAN. HOUSE LATERALS FROM CHIMNEYS SHALL NOT HAVE AN ANGLE OF LESS THAN 45° WITH THE MAIN LINE SEWER. ANY CHANGE IN ALIGNMENT SHALL BE REQUESTED IN WRITING BY THE PRIVATE ENGINEER. 5. THE PRIVATE ENGINEER SHALL FURNISH THE HOUSE LATERAL DEPTH AT THE PROPERTY LINE BELOW THE TOP OF CURB ELEVATION FOR EACH HOUSE LATERAL ON THE GRADE SHEET. 6. NO REVISIONS SHALL BE MADE IN THESE PLANS WITHOUT THE APPROVAL OF THE COUNTY ENGINEER. 7. THE CONTRACTOR SHALL NOTIFY THE CONSTRUCTION DIVISION BY TELEPHONE, MANHOLE 9-40, EXT. 8151, AT LEAST TWENTY-FOUR HOURS BEFORE STARTING ANY WORK UNDER THIS CONTRACT. 8. ALL STRUCTURES SHALL BE BUILT TO SPECIFICATIONS PER 5-1 ON PRECAST CONCRETE MANHOLES PER 5-56, EXCEPT AS NOTED. 9. "T" OR "T" BRANCHES MAY BE USED FOR CONNECTIONS TO MAINLINE SEWERS EXCEPT AS NOTED. 10. MANHOLE TOPS IN UNIMPROVED RIGHTS OF WAY TO BE 31.5 INCHES ABOVE FINISHED GRADE. 11. USE EXTRA STRENGTH PIPE. ALL PIPE IS STANDARD DEPTH EXCEPT AS NOTED. 12. VITRIFIED CLAY PIPE JOINTS SHALL BE TYPE "B", "C", OR "D" PER STANDARD SPECIFICATIONS SECTION 306-2. 13. IF A POWER POLE IS WITHIN THREE FEET OF THE SEWER, THE SEWER SHALL BE ENCASED, PER 5-28, TWO FEET ON EACH SIDE FROM THE POINT OF INTERFERENCE. 14. IF DURING THE COURSE OF CONSTRUCTION IT IS DETERMINED THAT THERE IS LESS THAN FOUR FEET OF COVER OVER THE TOP OF A MAIN LINE OR HOUSE LATERAL V.C.P. SEWER WHICH IS NOT INDICATED ON THE PLANS, THE PIPE SHALL BE ENCASED PER 5-28, UNLESS OTHERWISE APPROVED BY THE COUNTY ENGINEER. 15. REPAIRS TO ALL TRENCHES WITHIN PAVED AREAS TO MEET L.A. COUNTY ROAD DEPT. OR CALIFORNIA STATE HIGHWAY REQUIREMENTS IN ACCORDANCE WITH PERMITS. 17. REFER TO SECTION 718.1.1 OF THE STANDARD SPECIFICATIONS REGARDING SAFETY SIGNS. 18. ALL JOINTS BETWEEN CAST IRON PIPE AND VITRIFIED CLAY PIPE SHALL BE MADE WITH A RUBBER SLEEVE JOINT, TYPE "C" OR "D", WITHIN BUSHING IF NECESSARY PER STANDARD SPECIFICATIONS, SECTION 306-2. THE FOLLOWING LATEST REVISED STANDARD PLANS ON FILE IN THE OFFICE OF THE COUNTY ENGINEER SHALL APPLY IN THE CONSTRUCTION OF THIS PROJECT.

Legend table listing materials and their corresponding specifications: MINIMUM PUBLIC SAFETY REQUIREMENTS (5-1), RICE MANHOLE (5-2), NON REINFORCED PRECAST CONCRETE MANHOLE (5-36), REINFORCED PRECAST CONCRETE MANHOLE (5-37), MANHOLE FRAME AND COVER (5-38), STANDARD MANHOLE STEP (5-17), BEDDING FOR SEWER PIPE (5-29), CHANGING AND ENCASING (5-23), WY ON THE SUPPORT (5-30), ALLOWABLE TRENCH WIDTHS (5-36).

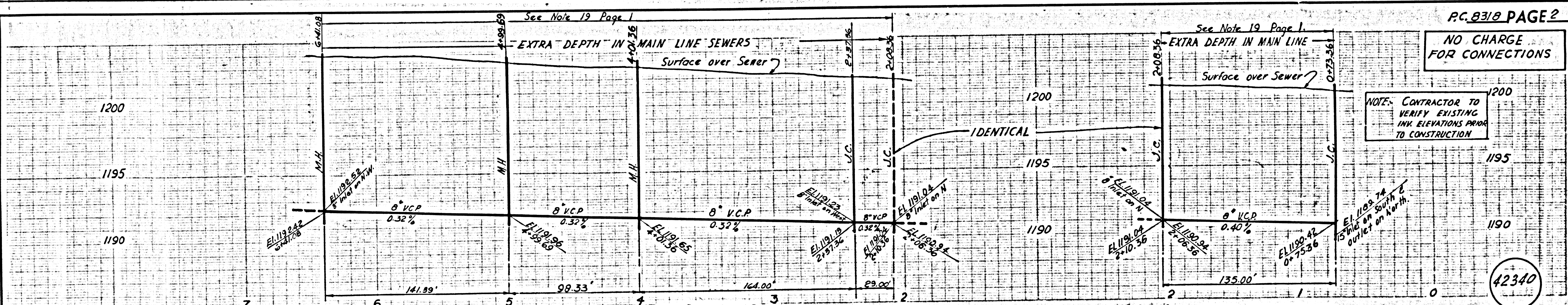
The following County San. Dist. Standard Plans apply in the construction of the project: STD. M.H. & JUNCTION CHAMBER, TYPE "A" 5-4-201; STD. M.H. FRAME & COVER 5-6-207

GRADES TO WHICH THE IMPROVEMENT IS TO BE CONSTRUCTED ARE SHOWN ON PLANS AND PROFILE. GRADE POINTS FOR TOP OF CURB, CENTER LINE OF STREETS, OR CENTER LINE OF ALLEYS ARE SHOWN BY CIRCLES ON PROFILES. AT ALL POINTS WITHIN DESIGNATED POINTS THE GRADE SHALL BE ESTABLISHED SO AS TO CONFORM TO A STRAIGHT LINE DRAWN BETWEEN SAID DESIGNATED POINTS. ELEVATIONS ARE IN FEET ABOVE U.S.C. & G.S. SEA LEVEL DATUM OF 1929. WORK SHALL BE CONSTRUCTED ACCORDING TO THE STANDARD SPECIFICATIONS FOR PUBLIC WORKS CONSTRUCTION (1970 Edition) AND COUNTY ENGINEER SPECIAL PROVISIONS FOR BIDDING AND CONTRACTING. THE CONTRACTOR SHALL BE RESPONSIBLE FOR OBTAINING ALL NECESSARY PERMITS FROM THE L.A. COUNTY ROAD DEPT., DISTRICT OFFICE NO. 32, AND PAY A FEE TO THE COUNTY ENGINEER, ROOM 306, COUNTY ENGINEERING DEPARTMENT, THE WEST SECOND STREET, LOS ANGELES, CALIFORNIA. BEFORE WORK CAN BE STARTED, THE CONTRACTOR MUST OBTAIN A PERMIT TO EXCAVATE IN COUNTY STREETS FROM THE L.A. COUNTY ROAD DEPT., DISTRICT OFFICE NO. 32, AND PAY A FEE TO THE COUNTY ENGINEER, ROOM 306, COUNTY ENGINEERING DEPARTMENT, THE WEST SECOND STREET, LOS ANGELES, CALIFORNIA. APPROVAL OF THIS PLAN BY THE COUNTY OF LOS ANGELES DOES NOT CONSTITUTE A REPRESENTATION AS TO THE ACCURACY OF THE LOCATION OF OR THE EXISTENCE OR NON-EXISTENCE OF ANY UNDERGROUND UTILITY PIPE, OR STRUCTURE WITHIN THE LIMITS OF THE PROJECT. THIS NOTE APPLIES TO ALL PAGES. IF WORK IS TO BE DONE IN A STATE HIGHWAY, A PERMIT MUST BE OBTAINED FROM THE STATE OF CALIFORNIA, DIVISION OF HIGHWAYS, 120 SOUTH BRIDGE STREET, LOS ANGELES, CALIFORNIA.

COUNTY OF LOS ANGELES, CALIFORNIA JOHN A. LAMBIE, COUNTY ENGINEER J. D. PARKHURST, CHIEF ENGINEER APPROVED BY [Signature] DATE 11-4-70 APPROVED BY [Signature] DATE 11-4-70

42339

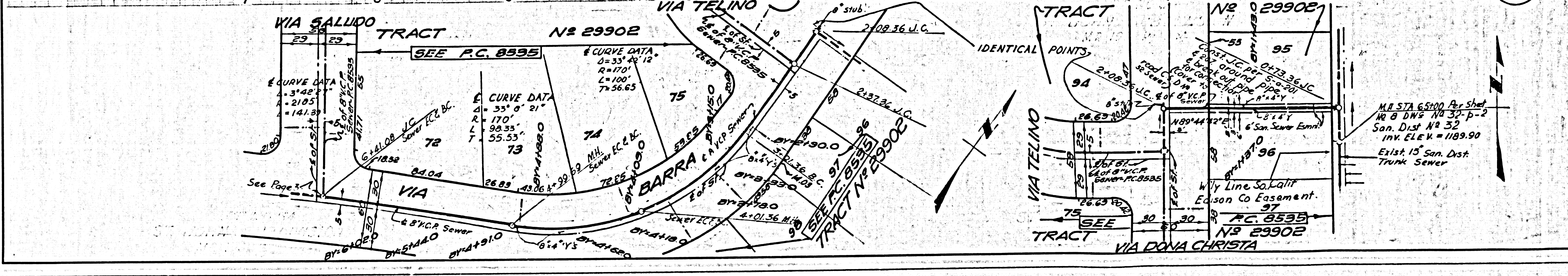
JN 025002

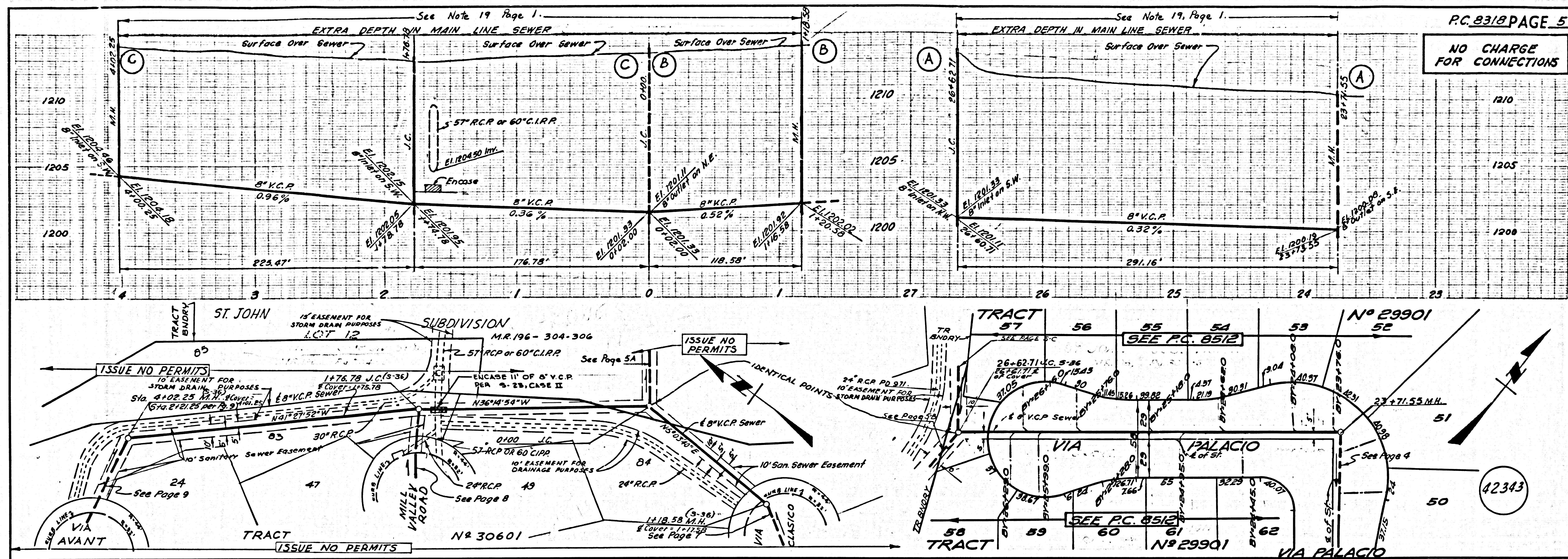


NO CHARGE FOR CONNECTIONS

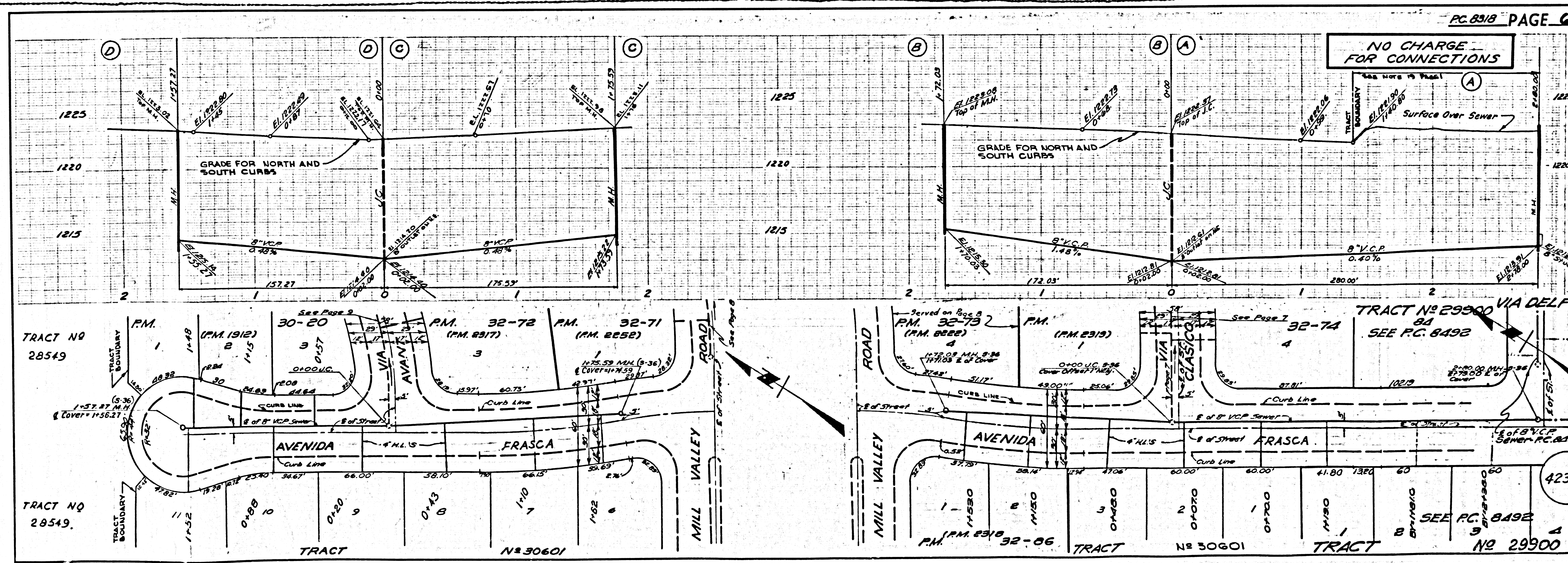
NOTE: CONTRACTOR TO VERIFY EXISTING INV. ELEVATIONS PRIOR TO CONSTRUCTION

42340

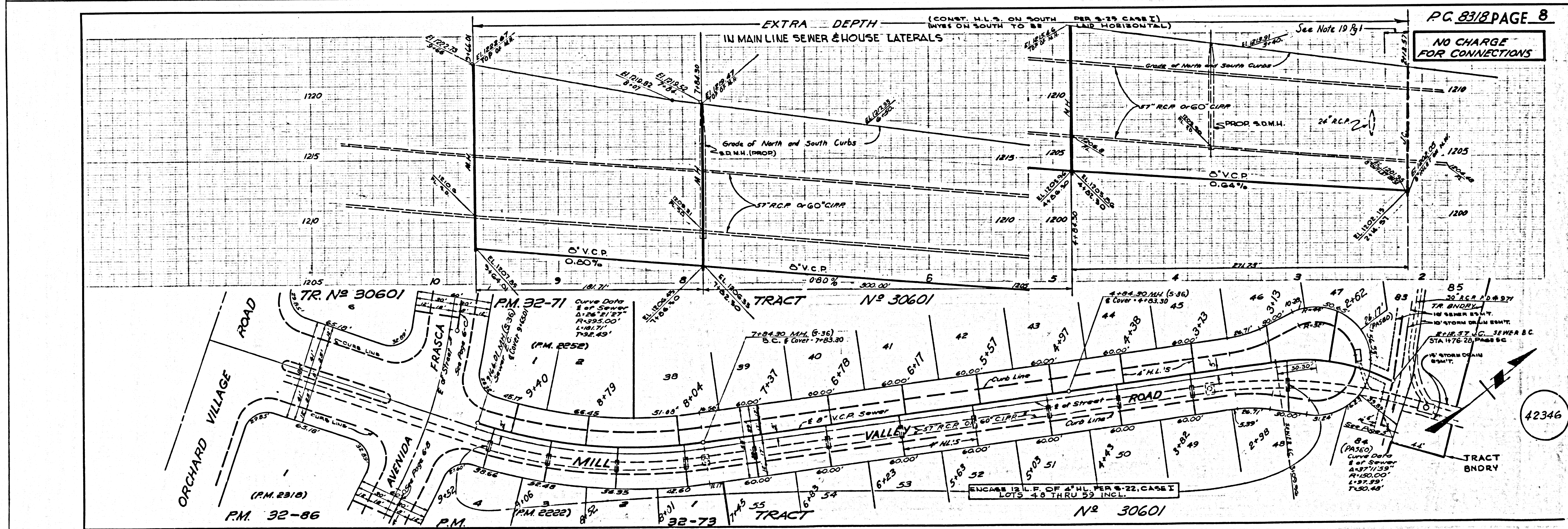
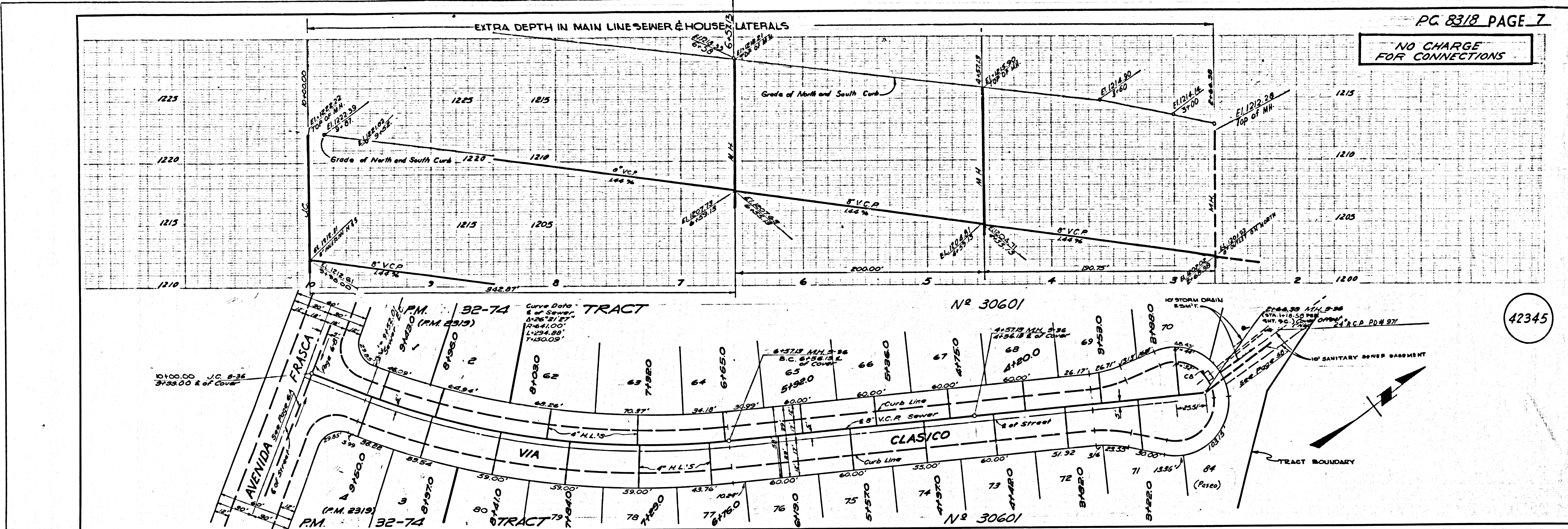




L.A. COUNTY SEWER SHEET NO. 2 SOUTHERN CALIFORNIA BLUEPRINT CO. 7836 11/49



L.A. COUNTY SEWER SHEET NO. 2 SOUTHERN CALIFORNIA BLUEPRINT CO. 7836 11/49



NO CHARGE FOR CONNECTIONS

