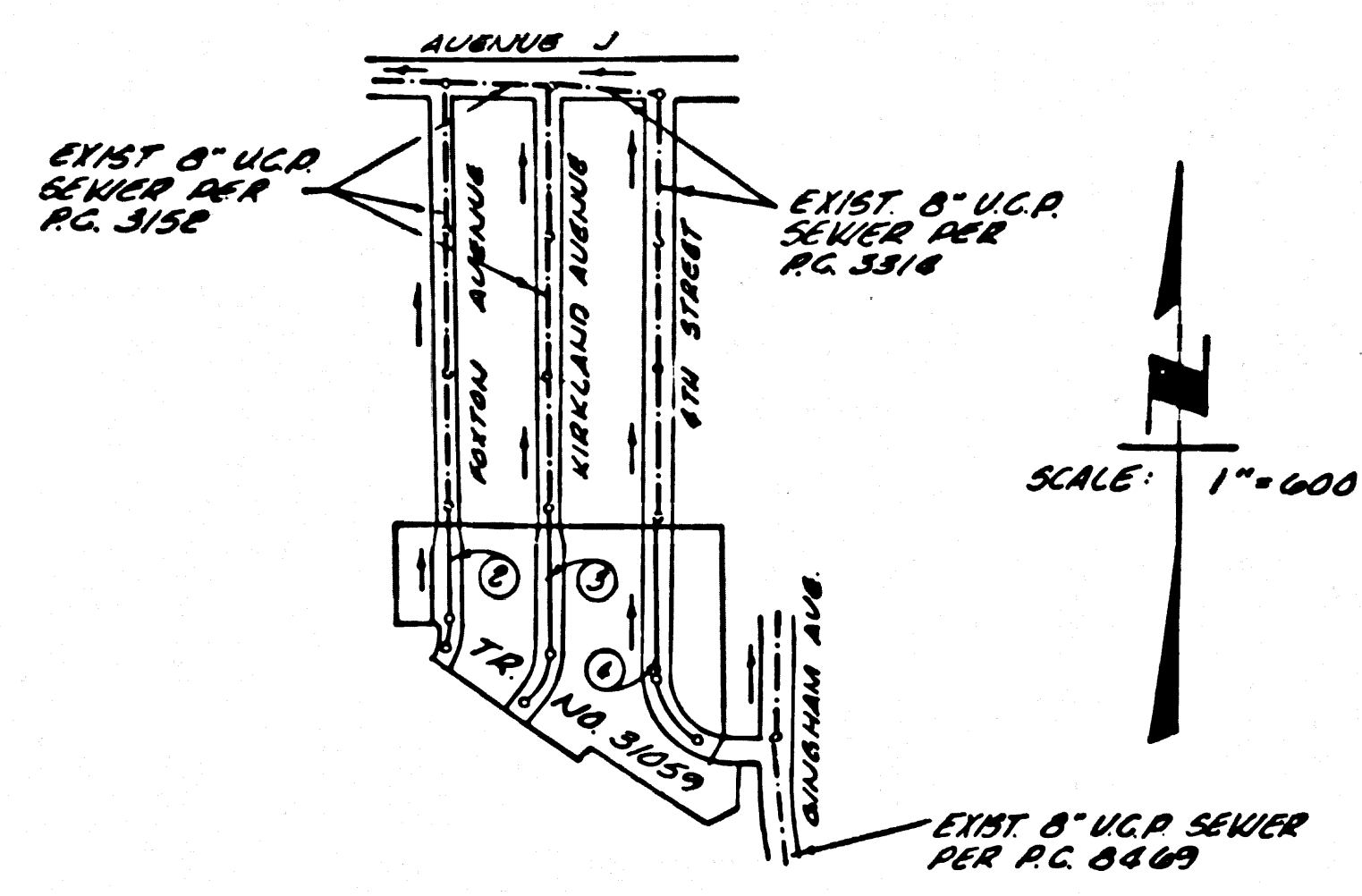


B.M. B.L. 66 ELEV. 2305000
 L.A. N. AT W.C.R. SE. COR. 8TH ST. EAST
 4' 40" S. (SERVICE 20') 80' NORTH 4' 04"
 EAST OF CENTERLINE INTERSECTION
 LANCASTER QUAD. 19 65 (ADJ)

PRIVATE ENGINEER'S NOTICE TO CONTRACTORS
 THE EXISTENCE AND LOCATION OF ANY UNDERGROUND UTILITY OF
 STRUCTURE SHOWN ON THESE PLANS ARE OBTAINED BY A SEARCH OF
 THE AVAILABLE RECORDS. TO THE BEST OF OUR KNOWLEDGE THERE
 ARE NO EXISTING UTILITIES EXCEPT AS SHOWN ON THIS MAP. THE
 CONTRACTOR IS REQUIRED TO TAKE DUE PRECAUTIONARY MEASURES
 TO PROTECT THE UTILITY LINES SHOWN AND ANY OTHER LINES NOT
 OF RECORD OR NOT SHOWN ON THIS MAP.
Martin A. Lieberman 12/68
 MARTIN A. LIEBERMAN E.C.E. No. 13168

GENERAL NOTES:
 1. ELEVATIONS ARE IN FEET ABOVE U.S.C. & G.S. SEA LEVEL DATUM OF 1929.
 2. NO REVISIONS SHALL BE MADE IN THESE PLANS WITHOUT THE APPROVAL OF THE COUNTY ENGINEER.
 3. NO REPRESENTATIVE OF THE COUNTY ENGINEER WILL SURVEY OR LAY OUT ANY PORTION OF THE WORK.
 4. GRADES TO WHICH THIS IMPROVEMENT IS TO BE CONSTRUCTED ARE SHOWN ON PLANS AND PROFILES. GRADE POINTS FOR TOP OF CURBS, CENTER LINE OF STREETS, OR CENTER LINE OF ALLEYS ARE SHOWN BY CIRCLES ON PROFILES AT ALL POINTS BETWEEN DESIGNATED POINTS. THE GRADE SHALL BE ESTABLISHED SO AS TO CONFORM TO A STRAIGHT LINE DRAWN BETWEEN SAID DESIGNATED POINTS.
 5. THE PRIVATE ENGINEER SHALL FURNISH THE COUNTY ENGINEER WITH GRADE SHEETS AND STATIONING FOR ALL HOUSE LATERALS AND "T" OR "Y" BRANCHES AND SHALL PROVIDE STAKES FOR THEM AT THEIR PROPER LOCATIONS WITH STATIONING PLAINLY MARKED. ALL HOUSE LATERALS SHALL BE CONSTRUCTED IN A STRAIGHT ALIGNMENT AT RIGHT ANGLES FROM THE MAIN LINE SEWER. BRANCHES SHOWN ON ONE-RAMP HOUSE LATERALS FROM CHIMNEYS SHALL NOT HAVE AN ANGLE OF LESS THAN 45° WITH THE MAIN LINE SEWER. ANY CHANGE IN ALIGNMENT SHALL BE REQUESTED IN WRITING BY THE PRIVATE ENGINEER.
 6. THE PRIVATE ENGINEER SHALL FURNISH THE HOUSE LATERAL DEPTH AT THE PROPERTY LINE BELOW THE TOP OF CURB ELEVATION FOR EACH HOUSE LATERAL ON THE GRADE SHEET.
 7. BEFORE WORK CAN BE STARTED, THE CONTRACTOR MUST OBTAIN A PERMIT TO EXCAVATE IN COUNTY STREETS FROM THE L.A. COUNTY ROAD DEPT., DISTRICT OFFICE NO. 5, AND PAY A FEE TO THE COUNTY ENGINEER, 5150 E. IMPERIAL AVENUE, LOS ANGELES, CALIF. OF \$ATELEPHONE \$6667 REGIONAL OFFICE, TO COVER THE COST OF CONSTRUCTION INSPECTION AND RECORD PLANS.
 8. IF WORK IS TO BE DONE IN A STATE HIGHWAY, A PERMIT MUST BE OBTAINED FROM THE STATE OF CALIFORNIA, DIVISION OF HIGHWAYS, 120 SOUTH SPRING STREET, LOS ANGELES, CALIFORNIA.
 9. APPROVAL OF THIS PLAN BY THE COUNTY OF LOS ANGELES DOES NOT CONSTITUTE A REPRESENTATION AS TO THE ACCURACY OF THE LOCATION OF OR THE EXISTENCE OR NON-EXISTENCE OF ANY UNDERGROUND UTILITY PIPE, OR STRUCTURE WITHIN THE LIMITS OF THIS PROJECT. THIS NOTE APPLIES TO ALL PAGES.
 10. REFER TO SECTION 7-18.4.1 OF THE STANDARD SPECIFICATIONS, REGARDING SAFETY ORDERS.
 County Sanitation Districts shall be notified prior to the following so that required inspection can be made (Phone 337-1025 --- 688-1161)
 No connections for the disposal of industrial wastes shall be made to sewers shown on these drawings without written permission from the Chief Engineer and General Manager of the County Sanitation Districts.
 acceptance of the project.

CONSTRUCTED IN
 TRACT NO. 31059
 PRIVATE CONTRACT NO. 8820
 W.S. 70
 2 SHEETS, 4 PAGES (43961)
 SCALE: VERT. 1"=4' HORIZ. 1"=40'
 SEPTEMBER, 1972
 PREPARED IN THE OFFICES OF
JENNINGS ENGINEERING CO.
 4419 VAN NUYS BLVD., SHERMAN OAKS, CA. 91403
 BY: Martin A. Lieberman
 MARTIN A. LIEBERMAN REG. C.E. No. 13168



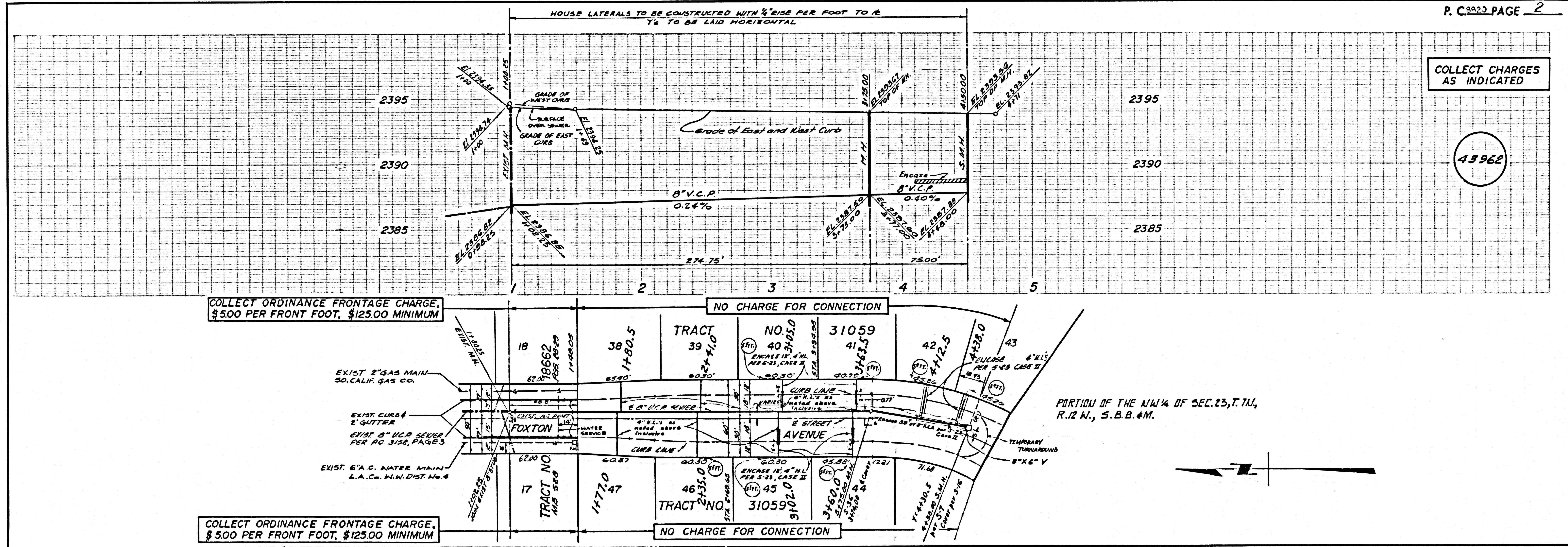
INDEX MAP
 P.C. 8820
 TRACT NO. 31059

THE FOLLOWING LATEST REVISED STANDARD PLANS ON FILE IN THE OFFICE OF THE COUNTY ENGINEER SHALL APPLY IN THE CONSTRUCTION OF THIS PROJECT.

LEGEND	5-1
MINIMUM PUBLIC SAFETY REQUIREMENTS	5-2
BRICK MANHOLE	5-3
STANDARD MANHOLE STEP	5-17
BEDDING FOR SEWER PIPE	5-21
CRADLING AND BRACKETING	5-23
TYPE OF THE SUPPORT	5-24
ALLOWABLE TRENCH WIDTHS	5-25
LOCKING MANHOLE FRAME AND COVER	5-28
NON-REINFORCED PRECAST CONCRETE MANHOLE	5-34
RECTANGULAR MANHOLE FRAME & COVER	5-36
RECTANGULAR SHALLOW MANHOLE	5-37
PRECAST CONCRETE SHALLOW MANHOLE	5-38

CONSTRUCTION NOTES:
 1. WORK SHALL BE CONSTRUCTED ACCORDING TO THE STANDARD SPECIFICATIONS FOR PUBLIC WORKS CONSTRUCTION 1970 EDITION WITH 2-1-72 SUPPLEMENTS AND COUNTY ENGINEER SPECIAL PROVISIONS FOR THE CONSTRUCTION OF SANITARY SEWERS DATED 1-1-72 AND SHALL BE PROSECUTED ONLY IN THE PRESENCE OF THE COUNTY ENGINEER.
 2. THE CONTRACTOR SHALL NOTIFY THE CONSTRUCTION DIVISION BY TELEPHONE, IN LOS ANGELES 9-4747, EXT. 81551, AT LEAST TWENTY-FOUR HOURS BEFORE STARTING ANY WORK UNDER THIS CONTRACT.
 3. HOUSE LATERALS TO BE CONSTRUCTED WITH INVERTS AT PROPERTY LINE 4 FEET BELOW CURB GRADE EXCEPT AS NOTED.
 4. WYE OR TE BRANCHES MAY BE USED FOR CONNECTIONS TO MAINLINE SEWERS EXCEPT AS NOTED.
 5. ALL STRUCTURES SHALL BE EITHER BRICK MANHOLES PER 5-3 OR PRECAST CONCRETE MANHOLES PER 5-34, EXCEPT AS NOTED.
 6. PROVIDE STAKES ON THE PROPERTY LINE OR PROPERTY LINES PRODUCED AT RIGHT ANGLES TO THE SEWER LINE AT THE CENTER LINE OF EACH MANHOLE.
 7. MANHOLE TOPS IN UNIMPROVED RIGHTS OF WAY TO BE SIX INCHES ABOVE FINISHED GRADE.
 8. VITRIFIED CLAY PIPE JOINTS SHALL BE TYPE "B", "P", OR "G" PER STANDARD SPECIFICATIONS SECTION 208-2.
 9. IF A POWER POLE IS WITHIN THREE FEET OF THE SEWER, THE SEWER SHALL BE ENCASED, PER 5-23, CASE II, TWO FEET ON EACH SIDE FROM THE POINT OF INTERFERENCE.
 10. IF DURING THE COURSE OF CONSTRUCTION IT IS DETERMINED THAT THERE IS LESS THAN FOUR FEET OF COVER OVER THE TOP OF A MAIN LINE OR HOUSE LATERAL V.C.P. SEWER WHICH IS NOT INDICATED ON THE PLANS, THE PIPE SHALL BE ENCASED PER 5-23, CASE II UNLESS OTHERWISE APPROVED BY THE COUNTY ENGINEER.
 11. ALL JOINTS BETWEEN CAST IRON PIPE AND VITRIFIED CLAY PIPE SHALL BE MADE WITH A RUBBER SLEEVE JOINT, TYPE "C" OR "D", (WITH BUSHING IF NECESSARY) PER STANDARD SPECIFICATIONS, SECTION 208-2.
 12. SEWERS TO BE TESTED FOR LEAKAGE PER SECTION 208-2.3.7 OF THE STANDARD SPECIFICATIONS AND SPECIAL PROVISIONS.
 13. RESURFACE ALL TRENCHES WITHIN PAVED AREAS TO MEET L.A. COUNTY ROAD DEPT. OR CALIFORNIA STATE HIGHWAY REQUIREMENTS IN ACCORDANCE WITH PERMITS.
 14. FULL COMPLIANCE WITH SECTION 208-1.8.8 OF THE SPECIAL PROVISIONS WILL BE REQUIRED FOR BACKFILL IN STREET. CERTIFICATION OF BACKFILL COMPACTION AND SAID EQUIVALENTS BY A QUALIFIED REGISTERED TESTING LABORATORY SHALL BE PROVIDED BY THE PERMITTEE FROM THE ISSUANCE OF A CERTIFICATE OF PARTIAL ACCEPTANCE.

COUNTY OF LOS ANGELES, CALIFORNIA
 HARVEY T. BRANDT COUNTY ENGINEER JOHN D. PARKHURST, CHIEF ENGINEER
 APPROVED Martin A. Lieberman 1/15/73 APPROVED J. D. Parkhurst
 REGIONAL ENGINEER OFFICE ENGINEER
 CHECKED R. L. Kopecky 1/15/73
 REG. C.E. NO. 16442
 LANCASTER BLDG. DIST. 80 J.N. 0250.02



COLLECT CHARGES AS INDICATED

(43962)

COLLECT ORDINANCE FRONTAGE CHARGE, \$5.00 PER FRONT FOOT, \$125.00 MINIMUM

NO CHARGE FOR CONNECTION

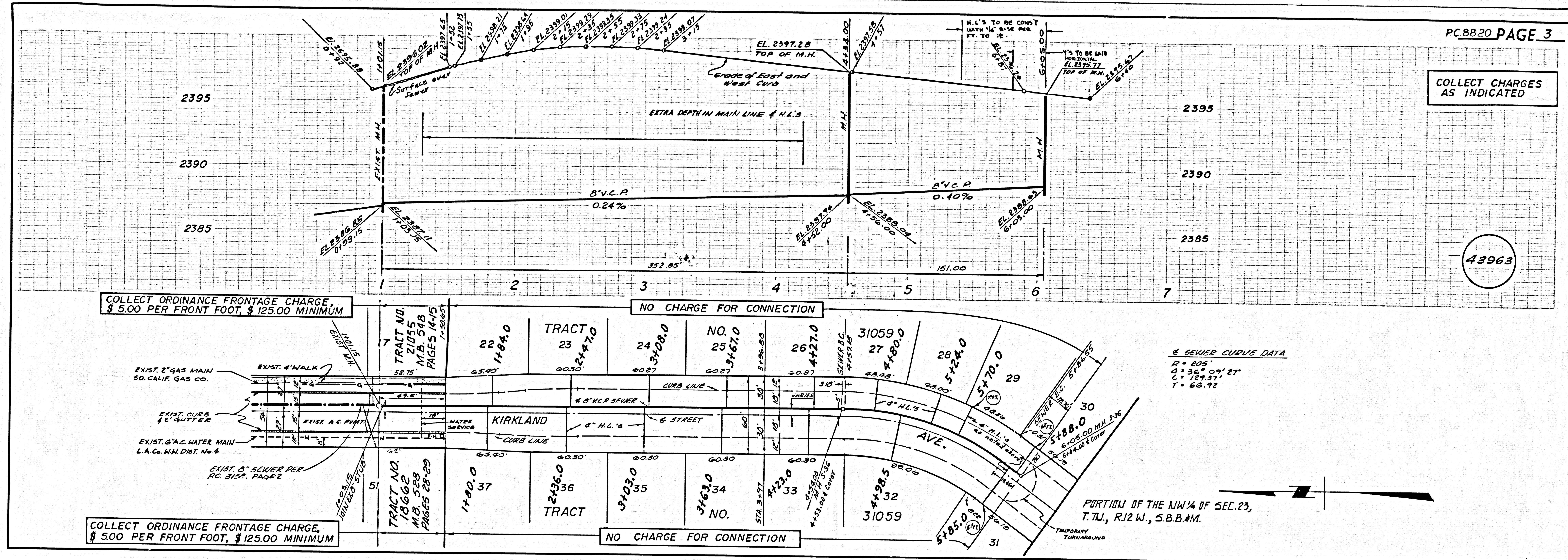
COLLECT ORDINANCE FRONTAGE CHARGE, \$5.00 PER FRONT FOOT, \$125.00 MINIMUM

NO CHARGE FOR CONNECTION

PORTION OF THE NW 1/4 OF SEC. 23, T. 7N., R. 12 W., S. B. B. # 11.

COLLECT CHARGES AS INDICATED

43963



COLLECT ORDINANCE FRONTAGE CHARGE \$ 5.00 PER FRONT FOOT, \$ 125.00 MINIMUM

NO CHARGE FOR CONNECTION

COLLECT ORDINANCE FRONTAGE CHARGE, \$ 5.00 PER FRONT FOOT, \$ 125.00 MINIMUM

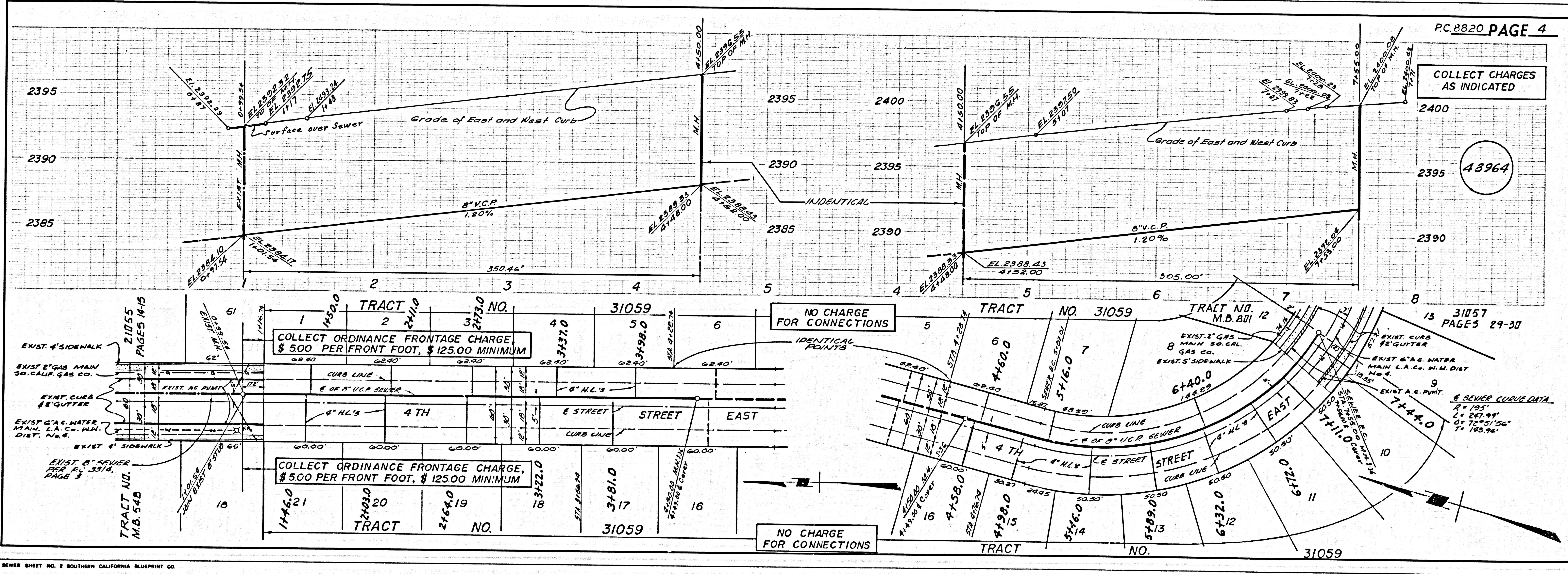
NO CHARGE FOR CONNECTION

SEWER CURVE DATA
 R = 205'
 Δ = 345° 09' 27"
 L = 729.57'
 T = 66.92'

PORTION OF THE NW 1/4 OF SEC. 23,
 T. 11, R. 12 W., S. B. B. M.
 TEMPORARY TURNAROUND

COLLECT CHARGES AS INDICATED

43964



COLLECT ORDINANCE FRONTAGE CHARGE, \$ 5.00 PER FRONT FOOT, \$ 125.00 MINIMUM

NO CHARGE FOR CONNECTIONS

COLLECT ORDINANCE FRONTAGE CHARGE, \$ 5.00 PER FRONT FOOT, \$ 125.00 MINIMUM

NO CHARGE FOR CONNECTIONS

SEWER CURVE DATA
 R = 195'
 Δ = 241° 41'
 L = 745.56'
 T = 145.96'