

LANCASTER BLDG. DIST. NO. 8

TRACT NO. 30793  
 PRIVATE CONTRACT NO. 8821

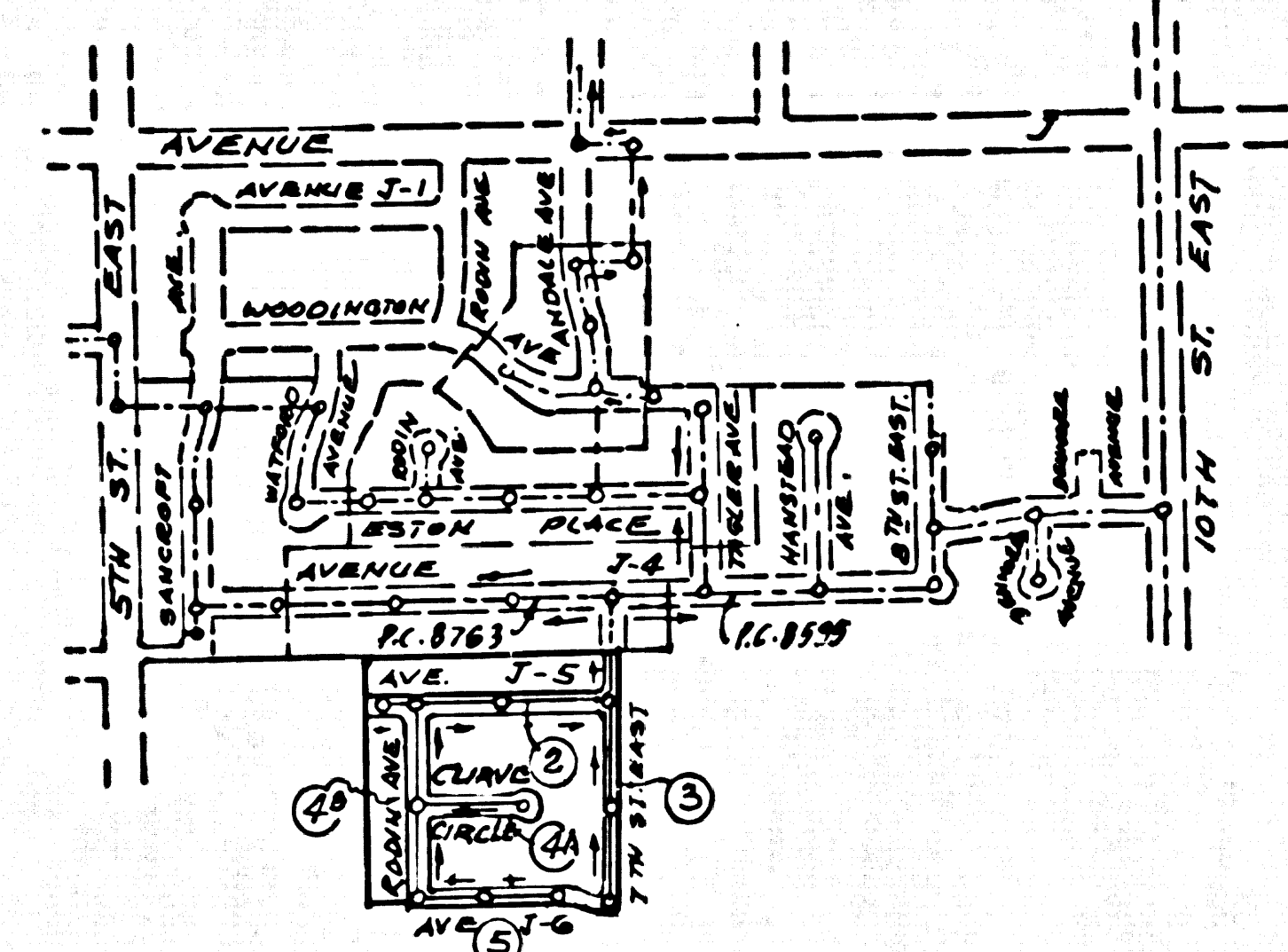
W.S. 70  
 3 SHEETS, 5 PAGES  
 SCALE: HORIZ. 1" = 40' VERT. 1" = 4'

43945

PREPARED BY THE OFFICES OF  
 CONSOLIDATED ENGINEERING CO.  
 8845 W. OLYMPIC BLVD.  
 BEVERLY HILLS, CALIFORNIA 90211  
 BY: *Emiguel Acosta*  
 REG. C. E. NO. 10915

FOR LEGEND SEE PLAN NO. S-1

B.M. S.L. 65 ELEV. 2391.642  
 C.P. MON. INWELL @ INTERSECTION  
 AVENUE J AND 5TH STREET EAST  
 N.W. COR. 1/4 COR. 4-13, E. EDGE.  
 LANCASTER QUAD. 19 65



INDEX MAP  
 SCALE: 1" = 400'  
 P.C. NO. 8821  
 TRACT NO. 30793

- THE FOLLOWING COUNTY ENGINEER  
 STANDARD PLANS APPLY TO THIS PROJECT:
- LEGEND 5-1
  - MINIMUM EXCAVATION SAFETY REQUIREMENTS 5-2
  - BRICK MANHOLE 5-3
  - NON-REIN PRECAST CONC. MANHOLE 5-8G
  - LOCKING MANHOLE FRAME & COVER 5-8S
  - MANHOLE STEP 5-17
  - BEDDING FOR SEWER PIPE 5-21
  - CRADLING & RIGGEMENT 5-23
  - WYE OR TEE SUPPORT 5-24
  - ALLOWABLE TRENCH WIDTHS 5-25
  - RECTANGULAR SHALLOW M.H. 5-7
  - RECTANGULAR SHALLOW M.H. FRAME & COVER 5-16
  - PRECAST CONC. SHALLOW M.H. 5-32

- NOTES:
1. PROFILE STAKES ON THE PROPERTY LINE OR PROPERTY LINES PRODUCED AT RIGHT ANGLES TO THE SEWER LINE AT THE CENTER LINE OF EACH MANHOLE.
  2. NO REPRESENTATIVE OF THE COUNTY ENGINEER WILL SURVEY OR LAY OUT ANY PORTION OF THE WORK.
  3. THE PRIVATE ENGINEER SHALL FURNISH THE COUNTY ENGINEER WITH GRADE SHEETS AND STATIONING FOR ALL HOUSE LATERALS AND 4" OR 6" BRANCHES AND SHALL PROVIDE STAKES FOR THEM AT THEIR PROPER LOCATIONS WITH STATIONING PLAINLY MARKED. ALL HOUSE LATERALS SHALL BE CONSTRUCTED IN A STRAIGHT ALIGNMENT AT RIGHT ANGLES FROM THE MAIN LINE SEWER EXCEPT AS SHOWN ON THE PLANS. HOUSE LATERALS FROM CHIMNEYS SHALL NOT HAVE AN ANGLE OF LESS THAN 45° WITH THE MAIN LINE SEWER. ANY CHANGE IN ALIGNMENT SHALL BE REQUESTED IN WRITING BY THE PRIVATE ENGINEER.
  4. THE PRIVATE ENGINEER SHALL FURNISH THE HOUSE LATERAL DEPTH AT THE PROPERTY LINE BELOW THE TOP OF CURB ELEVATION FOR EACH HOUSE LATERAL ON THE GRADE SHEET.
  5. NO REVISIONS SHALL BE MADE IN THESE PLANS WITHOUT THE APPROVAL OF THE COUNTY ENGINEER.
  6. THE CONTRACTOR SHALL NOTIFY THE CONSTRUCTION DIVISION BY TELEPHONE, MARSHON 5-670, EXT. 81881, AT LEAST TWENTY-FOUR HOURS BEFORE STARTING ANY WORK UNDER THIS CONTRACT.
  7. MANHOLES SHALL BE BRICK SEWER STRUCTURES PER S-2 PRECAST CONCRETE MANHOLES PER S-8E
  8. USE 8" DIA. STRAIGHT PIPE, ALL PIPE IS STANDARD DEPTH EXCEPT AS NOTED.
  9. 7" DIA. BRANCHES MAY BE USED FOR CONNECTIONS TO MAINLINE SEWER EXCEPT AS NOTED.
  10. WITHEPND CLAY PIPE JOINTS SHALL BE TYPE "D", "H", OR "G" PER STANDARD SPECIFICATIONS SEE S-8E.
  11. IF A POWER POLE IS WITHIN THREE FEET OF THE SEWER, THE SEWER SHALL BE ENCASED, PER S-23, TWO FEET ON EACH SIDE FROM THE POINT OF INTERFERENCE.
  12. IF DURING THE COURSE OF CONSTRUCTION IT IS DETERMINED THAT THERE IS LESS THAN FOUR FEET OF COVER OVER THE TOP OF A MAIN LINE OR HOUSE LATERAL V.C.P. SEWER WHICH IS NOT INDICATED ON THE PLANS, THE PIPE SHALL BE ENCASED PER S-23, CASE 32 UNLESS OTHERWISE APPROVED BY THE COUNTY ENGINEER.
  13. HOUSE LATERALS TO BE CONSTRUCTED WITH INVERTS AT PROPERTY LINE & FEET BELOW CURB GRADE EXCEPT AS NOTED.
  14. RESURFACE ALL TRENCHES WITHIN PAVED AREAS TO MEET L.A. COUNTY ROAD DEPT. OR CALIFORNIA STATE HIGHWAY REQUIREMENTS IN ACCORDANCE WITH PERMITS.
  15. SEWERS TO BE TESTED FOR LEAKAGE PER SEC. 306-2.1.7 OF THE S.D. SPEC'S SPECIAL PROVISIONS.
  16. ALL STATE AND LOCAL TRENCH SAFETY ORDERS WILL BE STRICTLY ENFORCED, AND SHALL COMPLY WITH STANDARD SPECIFICATIONS SECTION 7-10.4.1.
  17. ALL COMPLIANCE WITH SEC. 306-1.9.3 OF THE SPECIAL PROVISIONS WILL BE ENFORCED FOR BACKFILL IN STREETS, CERTIFICATION OF BACKFILL COMPACTION AND JMD EQUIPMENTS BY QUALIFIED REGISTERED TESTING LABORATORY SHALL BE PROVIDED BY THE PERMITTEE PRIOR TO THE RESURFACE OF A CERTIFICATE OF PERMITS AND STAKE.
  18. REFER TO SECTION 7-10.4.1 OF THE STANDARD SPECIFICATIONS REGARDING SAFETY ORDERS.

County Sanitation Districts shall be notified prior to the following: 1. No shut required inspection can be made (Phone 337-1025 • • 638-1181)

Acceptance of this project.  
 No connections for the disposal of industrial wastes shall be made to sewers shown on these drawings without written permission from the Chief Engineer and General Manager of the County Sanitation Districts.

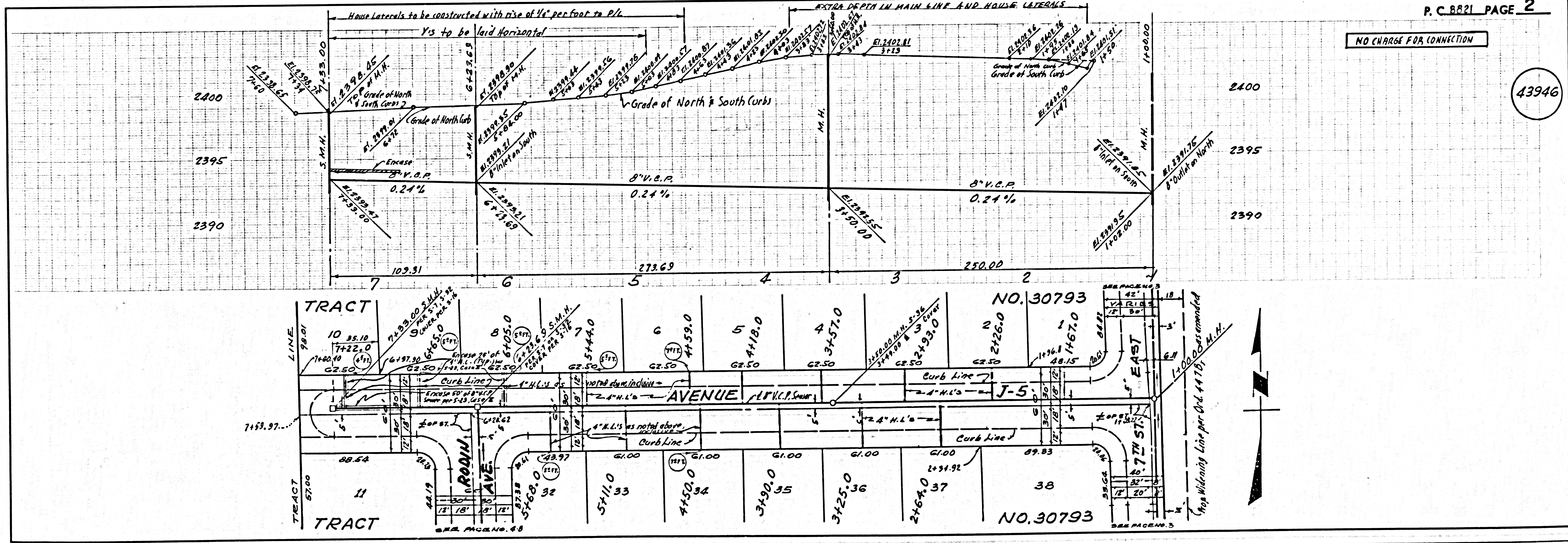
NOTICE TO CONTRACTOR  
 The existence and location of any underground utility pipes or structures shown on these plans are obtained by a search of the available records. To the best of my knowledge there are no existing utilities except as shown on these plans. The contractor is required to take due precautionary measures to protect the utility lines shown and any other lines not of record or not shown on these plans.  
*Emiguel Acosta*  
 R.E.L. 10915

NOTE:  
 GRADES TO WHICH THIS IMPROVEMENT IS TO BE CONSTRUCTED ARE SHOWN ON PLANS AND PROFILES. GRADE POINTS FOR TOP OF CURBS, CENTER LINE OF STREETS, OR CENTER LINE OF ALLEYS ARE SHOWN BY CIRCLES ON PROFILES AT ALL POINTS BETWEEN DESIGNATED POINTS. THE GRADE SHALL BE ESTABLISHED SO AS TO CONFORM TO A STRAIGHT LINE DRAWN BETWEEN SAID DESIGNATED POINTS. ELEVATIONS ARE IN FEET ABOVE U.S.C. & G.S. SEA LEVEL DATUM OF 1929.  
 THIS DRAWING AND THE DATA HEREON ARE HEREBY MADE A PART OF THE SPECIFICATIONS FOR PUBLIC WORKS CONSTRUCTION. BEFORE ANY CONTRACT IS AWARDED OR BEFORE THE WORK IS STARTED, THE CONTRACTOR MUST OBTAIN PERMITS FROM THE L.A. COUNTY ROAD DEPT., DISTRICT OFFICE NO. 5, AND PAY A FEE TO THE COUNTY ENGINEER, DIVISION OF PUBLIC WORKS, REGIONAL OFFICE, 8845 W. OLYMPIC BLVD., BEVERLY HILLS, CALIFORNIA 90211. A PERMIT MUST BE OBTAINED FROM THE STATE OF CALIFORNIA, DIVISION OF HIGHWAY, 126 SOUTH SPRING STREET, LOS ANGELES, CALIFORNIA.

COUNTY OF LOS ANGELES, CALIFORNIA  
 HARVEY T. BANKOT, COUNTY ENGINEER  
 J. D. PARKHURST, CHIEF ENGINEER  
 APPROVED BY: *[Signature]*  
 OFFICE ENGINEER

APPROVED BY: *[Signature]* 4/73  
 REGIONAL ENGINEER  
 CHECKED BY: *[Signature]* 10/73  
 REG. C. E. NO. 10915

J. N. 0250.02

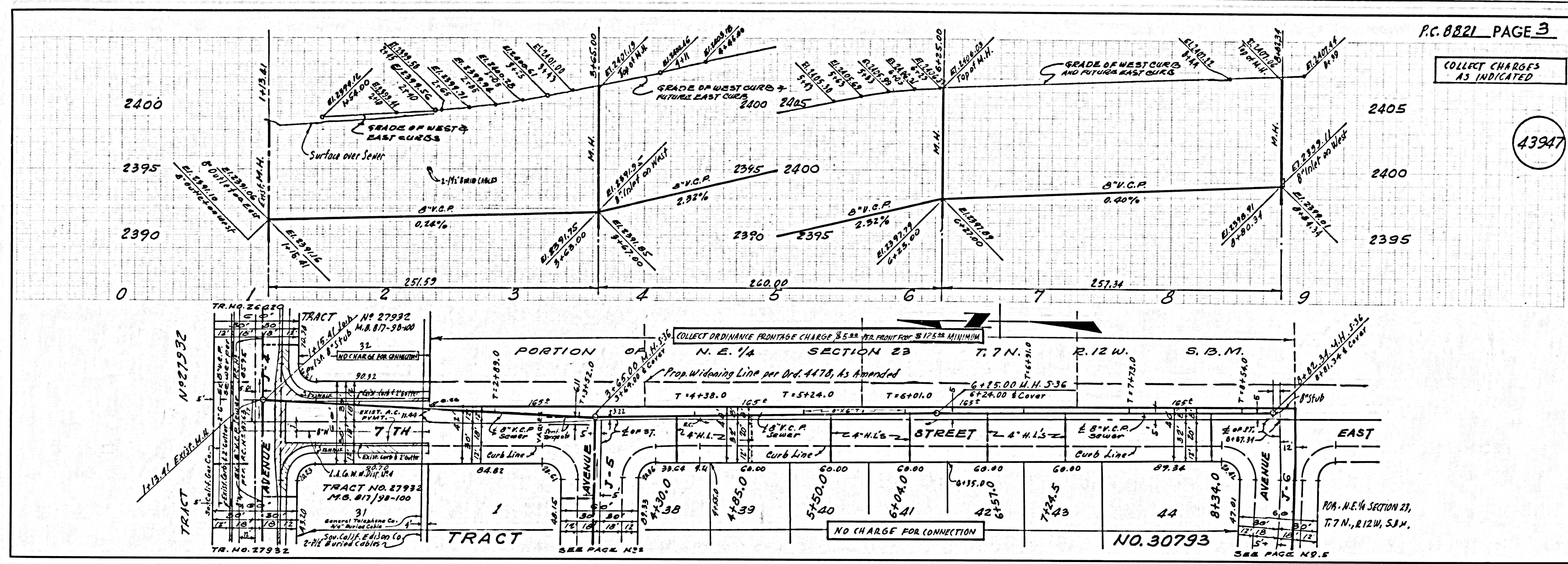


43946



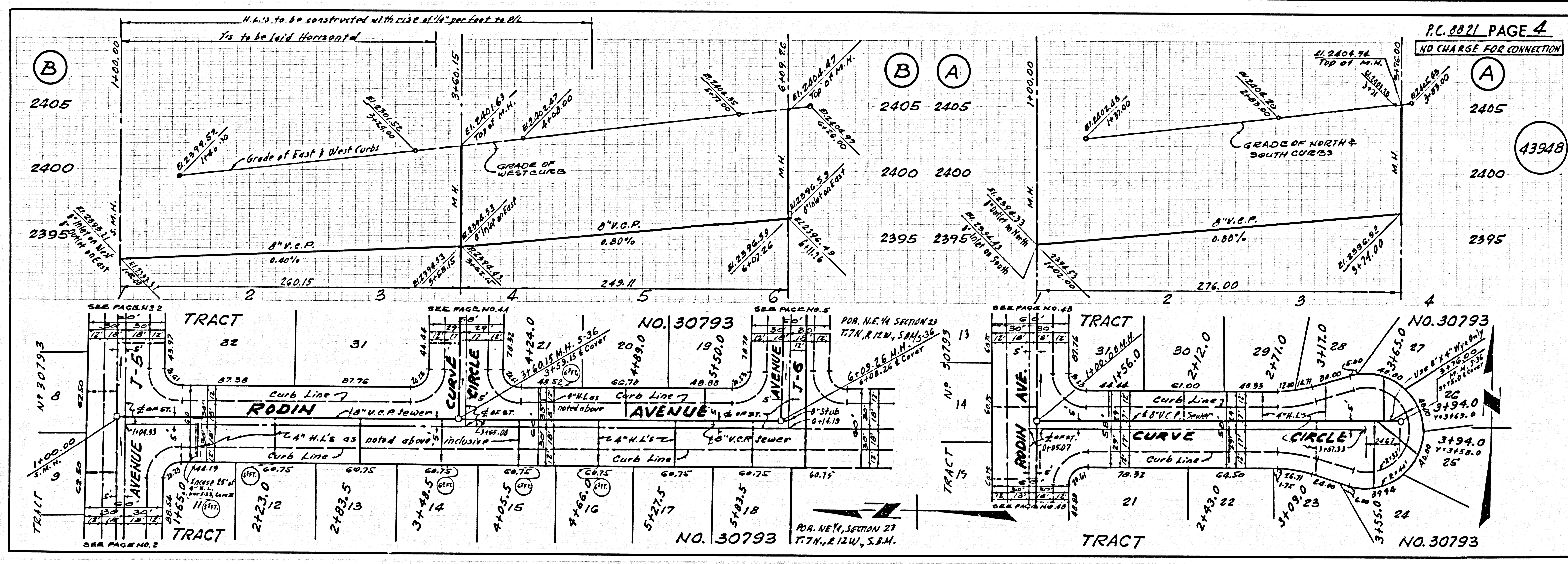
COLLECT CHARGES AS INDICATED

43947



NO CHARGE FOR CONNECTION

43948





NO CHARGE FOR CONNECTION

43949

