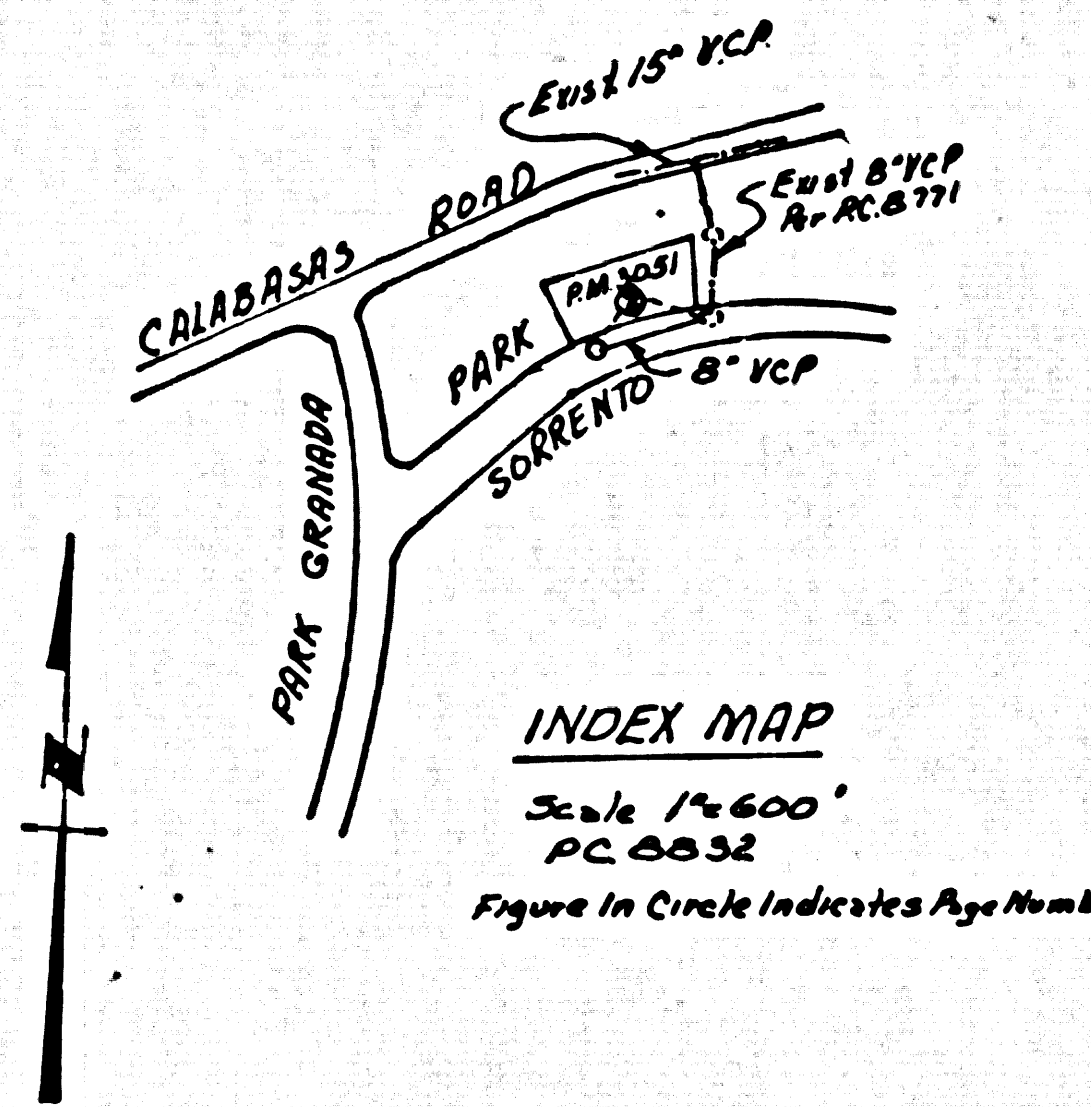


B.M. # BY 7537 ELEV. 922.287 (1948 adj.)
 C. & SCREW N.E. COR. OF SW. BASIN ON S.W. COR. MULNOLLAND DR. & CALABASAS RD. TO FT. SOUTH & 25 FT. WEST & INT. N.A.D.(C.M.)
 MALIBU QUAD. 1945

THE FOLLOWING COUNTY ENGINEER STANDARD PLANS APPLY TO THIS PROJECT.

LEGEND	5-1
MINIMUM PUBLIC SAFETY REQUIREMENTS	5-2
BRICK MANHOLE	5-3
REINFORCED PRECAST CONC. MANHOLE	5-3C
LOCKING MANHOLE FRAME & COVER	5-3S
STANDARD MANHOLE STEP	5-17
BEDDING FOR SEWER PIPE	5-21
CRADLING AND ENCASUREMENT	5-23
WYE AND TEE SUPPORT	5-24
WYE SADDLE-HOUSE LATERAL	5-25
ALLOWABLE TRENCH WIDTHS	5-33

NOTE:
 FULL COMPLIANCE WITH SECTION 306-19.3 OF THE SPECIAL PROVISIONS WILL BE REQUIRED FOR BACKFILL IN STREETS. CERTIFICATION OF BACKFILL COMPACTION AND SAND EQUIVALENTS BY A QUALIFIED REGISTERED TESTING LABORATORY SHALL BE PROVIDED BY THE PERMITTEE PRIOR TO THE ISSUANCE OF A CERTIFICATE OF PARTIAL ACCEPTANCE.



REVISION NO. 2 2-22-74
 EXTEND MAIN LINE SEWER FROM STATION 1+00 TO STATION 0+70.76 AND REDUCE MAIN LINE FROM STATION 4+45.57 TO STATION 2+55.91.
 APPROVED *Sheila Jones RE 19, 1968*

REVISION NO. 1 11-21-72
 Remove House Lot At Sta. 1+85 And Sta. 2+05.
 Add Tract 29344.
 APPROVED *San H. Miller R.E. #1086*

DOUBLE SCALE
 CALABASAS BLDG. DIST. NO. 9.1

- PROVIDE STAKES ON THE PROPERTY LINE OR PROPERTY LINE PRODUCED AT RIGHT ANGLES TO THE SEWER LINE AT THE CENTER LINE OF EACH MANHOLE.
- NO REPRESENTATIVE OF THE COUNTY ENGINEER WILL SURVEY OR LAY OUT ANY PORTION OF THE WORK.
- THE PRIVATE ENGINEER SHALL FURNISH THE COUNTY ENGINEER WITH GRADE SHEETS AND STATIONING FOR ALL HOUSE LATERALS AND 4" & 6" BRANCHES AND SHALL PROVIDE STAKES FOR THEM AT THEIR PROPOSED LOCATIONS WITH STATIONING PLAINLY MARKED. ALL HOUSE LATERALS SHALL BE CONSTRUCTED IN A STRAIGHT ALIGNMENT AT RIGHT ANGLES FROM THE MAIN LINE SEWER EXCEPT AS SHOWN ON THE PLANS. HOUSE LATERALS FROM CHIMNEYS SHALL NOT HAVE AN ANGLE OF LESS THAN 45° WITH THE MAIN LINE SEWER. ANY CHANGE IN ALIGNMENT SHALL BE INDICATED IN WRITING BY THE PRIVATE ENGINEER.
- THE PRIVATE ENGINEER SHALL FURNISH THE HOUSE LATERAL DEPTH AT THE PROPERTY LINE BELOW THE TOP OF CURB SAVATION FOR EACH HOUSE LATERAL ON THE GRADE SHEET.
- NO REVISIONS SHALL BE MADE IN THESE PLANS WITHOUT THE APPROVAL OF THE COUNTY ENGINEER.
- THE CONTRACTOR SHALL NOTIFY THE CONSTRUCTION DIVISION BY TELEPHONE, MAILBOX 9-207, EXT. 8158, AT LEAST TWENTY-FOUR HOURS BEFORE STARTING ANY WORK UNDER THIS CONTRACT.
- MANHOLES SHALL BE BRICK SEWER STRUCTURES PER S.E. PRECAST CONCRETE MANHOLES PER S-26, EXCEPT AS NOTED. MANHOLE TOPS IN UNIMPROVED RIGHTS-OF-WAY TO BE SIX INCHES ABOVE FINISHED GRADE.
- USE EXTRA STRENGTH PIPE. ALL PIPE IS STANDARD DEPTH EXCEPT AS NOTED.
- UNGRAVELLED 8" DIA. PIPE JOINTS SHALL BE 7" x 8" x 10", 7" x 6" x 8" OR 7" x 6" x 10" JOINTS.
- A POWER POLE IS WITHIN THREE FEET OF THE SEWER. THE SEWER SHALL BE ENCASED, PER S-25, TWO FEET ON EACH SIDE FROM THE POINT OF INTERFERENCE.
- IF DURING THE COURSE OF CONSTRUCTION IT IS DETERMINED THAT THERE IS LESS THAN FOUR FEET OF COVER OVER THE TOP OF A MAIN LINE OR HOUSE LATERAL V.C.P. SEWER WHICH IS NOT INDICATED ON THE PLANS, THE PIPE SHALL BE ENCASED PER S-25, UNLESS OTHERWISE APPROVED BY THE COUNTY ENGINEER.
- HOUSE LATERALS TO BE CONSTRUCTED WITH INVERTS AT PROPERTY LINE & FEET BELOW CURB GRADE EXCEPT AS NOTED.
- RESURFACE ALL TRENCHES WITHIN PAVED AREAS TO MEET L.A. COUNTY ROAD DEPT. OR CALIFORNIA STATE HIGHWAY REQUIREMENTS IN ACCORDANCE WITH PERMITS.
- SEWER TO BE IN ALL PLUMBING TRENCHES PER L.A. COUNTY ROAD DEPT. S-25, 7% OF THE SPACES OF SPECIAL PROVISIONS.
- 7" x 6" x 10" JOINTS MAY BE USED FOR CURB TO MANHOLE SEWER EXCEPT AS NOTED.
- SEWER TO BE SETTING 3" OR 4" ON THE GRADELINE PER S.E. PRECAST CONCRETE MANHOLES PER S-26.
- ALL CONSTRUCTION SHALL BE DONE IN ACCORDANCE WITH THE SPECIAL PROVISIONS OF THE COUNTY ENGINEER'S STANDARD SPECIFICATIONS FOR SEWERAGE AND SANITATION. ALL CONSTRUCTION SHALL BE DONE IN ACCORDANCE WITH THE SPECIAL SAFETY RULES OF THE COUNTY ENGINEER'S STANDARD SPECIFICATIONS FOR SEWERAGE AND SANITATION.

PROFILE ALIGNMENT AND GRADE OF
 SANITARY SEWERS PAGE 1
 TO BE CONSTRUCTED IN
 PARCEL MAP 3051

PRIVATE CONTRACT NO. 8832

W.S. 60
 1 SHEETS, 6 PAGES
 SCALE: VERT. 1" = 4'
 HORIZ. 1" = 40'
 Oct. 1, 1972
 PREPARED IN THE OFFICES OF
 U.L.N. - LOS ANGELES
 REG. C. E. NO. 21649
 FOR LEGEND SEE PLAN NO. S-1

NOTE:
 GRADES TO WHICH THIS IMPROVEMENT IS TO BE CONSTRUCTED ARE SHOWN ON PLANS AND PROFILES. GRADE POINTS FOR TOP OF CURB, CENTER LINE OF STREETS, OR CENTER LINE OF ALLEYS ARE SHOWN BY CIRCLES ON PROFILES AT ALL POINTS BETWEEN DESIGNATED POINTS. THE GRADE SHALL BE ESTABLISHED SO AS TO CONFORM TO A STRAIGHT LINE BETWEEN SAID DESIGNATED POINTS. ELEVATIONS ARE IN FEET ABOVE U.S.C. & G.S. MEAN LEVEL DATUM OF 1929. THESE GRADES ARE FOR INFORMATION ONLY. THE CONTRACTOR SHALL VERIFY THE ACCURACY OF THESE GRADES BY SURVEYING THE GRADES AT THE POINTS INDICATED ON THE PLANS AND PROFILES. BEFORE WORK CAN BE STARTED, THE CONTRACTOR MUST OBTAIN A PERMIT TO EXCAVATE IN COUNTY STREETS FROM THE L.A. COUNTY ROAD DEPT., DISTRICT OFFICE NO. 11, 110 S. MAIN ST., LOS ANGELES, CALIFORNIA. APPROVAL OF THIS PLAN BY THE COUNTY OF LOS ANGELES DOES NOT CONSTITUTE A REPRESENTATION AS TO THE ACCURACY OF THE LOCATION OF OR THE EXISTENCE OR NON-EXISTENCE OF ANY UNDERGROUND UTILITY PIPE, OR STRUCTURE WITHIN THE LIMITS OF THIS PROJECT. THIS NOTE APPLIES TO ALL PAGES. IF WORK IS TO BE DONE IN A STATE HIGHWAY, A PERMIT MUST BE OBTAINED FROM THE STATE OF CALIFORNIA, DIVISION OF HIGHWAYS, 120 SOUTH BRINK STREET, LOS ANGELES, CALIFORNIA.

COUNTY OF LOS ANGELES, CALIFORNIA
 HARVEY E. BRANDT COUNTY ENGINEER
 APPROVED BY *San H. Miller* DISTRICT ENGINEER
 APPROVED BY *John Stokes* DISTRICT ENGINEER

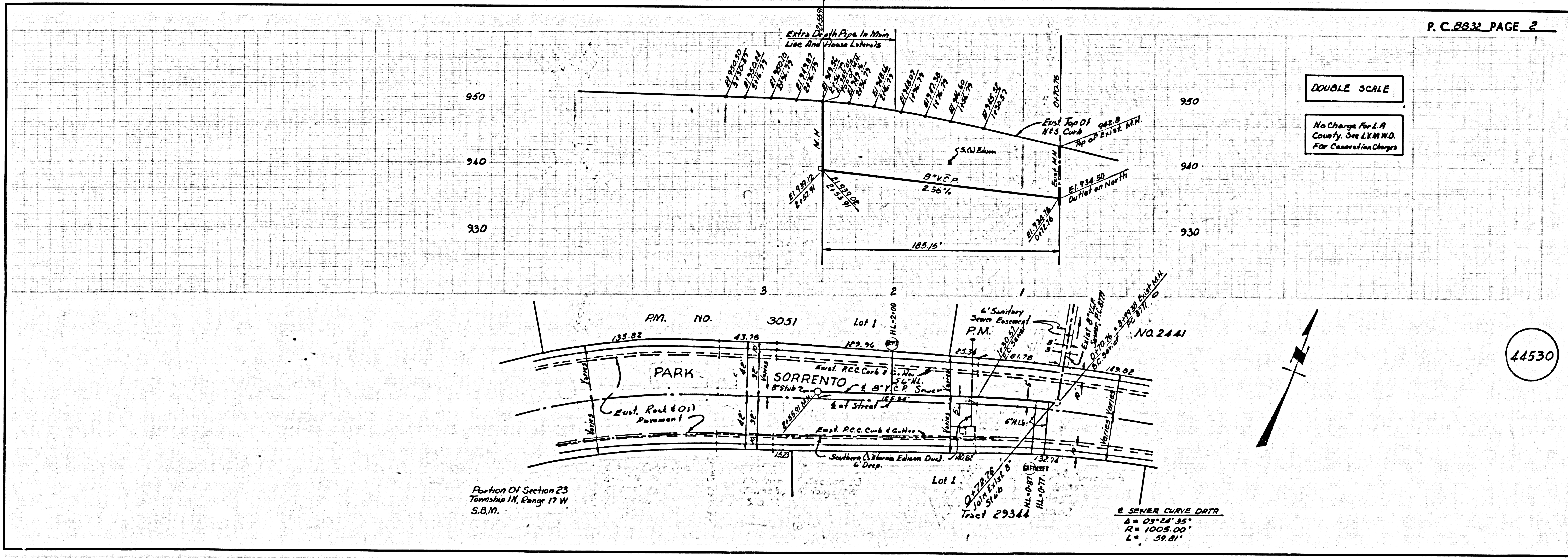
SUBMITTED BY *San H. Miller*
 CHECKED BY *San H. Miller*
 REG. C. E. NO. 11122

COLLECT CHARGES AS INDICATED

NOTICE TO CONTRACTOR
 The existence and location of any underground utility pipes or structures shown on these plans are obtained by a search of the available records to the best of my knowledge there are no existing utilities except as shown on these plans. The contractor is required to take due precautionary measures to protect the utility lines shown and any other lines not of record or not shown on these plans.
San H. Miller
 R.E. #1086

44529

J.N. 025205



P.C. 8832 PAGE 2

DOUBLE SCALE
 No Charge For L.A. County San E&M.D. For Connection Charges

44530