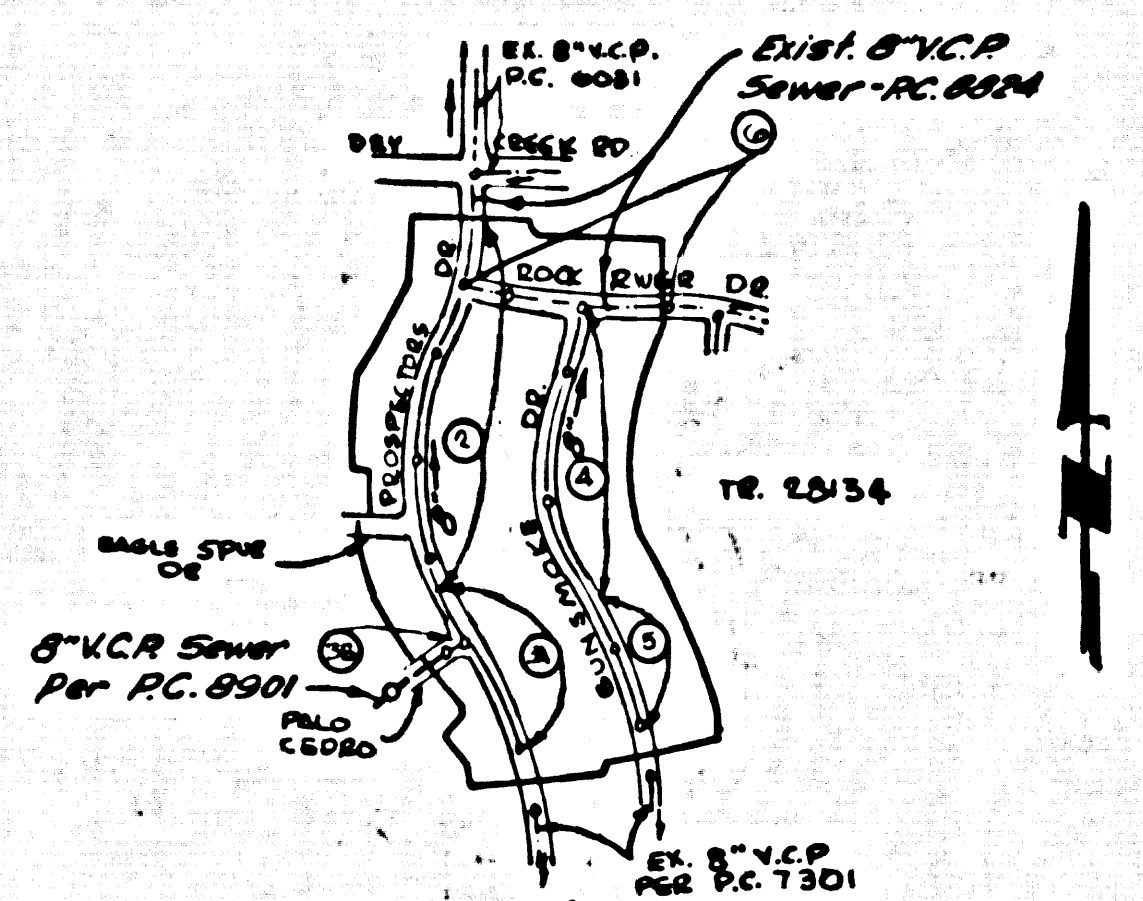


B.M. 3918 ELEV. 694.803
 200A. 748 IN C&S 25 FT. 5.100 FT.
 E. E. INT. DIAMOND BAR BL. &
 SUNSET CROSSING RD.
 OTTERBEIN QUAD. 1970

REVISION 1 5-10-73
 PG. 38 REVISE GRADE FROM STA.
 1484.35 TO TRACT BOUNDARY
 APPROVED *[Signature]* 17722
 OFFICE OF CO. ENGR. RCE



INDEX MAP
 TRACT NO. 28105
 P.C. 8833
 SCALE 1"=600'

County Sanitation Districts shall be notified prior to the following so that required inspection can be made (Phone 337-1025 - 638-1111)

Access to the project. No connections for the disposal of industrial wastes shall be made to sewer shown on these drawings without written permission from the Chief Engineer and General Manager of the County Sanitation Districts.

ISSUE NO PERMITS FOR HOUSE CONNECTIONS UNTIL P.C. 8824 HAS BEEN ACCEPTED

DOUBLE SCALE

- GENERAL NOTES:
1. REVISIONS ARE TO BE MADE IN THESE PLANS WITHOUT THE APPROVAL OF THE COUNTY ENGINEER.
 2. NO REPRESENTATIVE OF THE COUNTY ENGINEER WILL SURVEY OR LAY OUT ANY PORTION OF THE WORK.
 3. GRADES TO WHICH THIS IMPROVEMENT IS TO BE CONSTRUCTED ARE SHOWN ON PLANS AND PROFILES. GRADE POINTS FOR TOP OF CURB, CENTER LINE OF STREETS, OR CENTER LINE OF ALLEYS ARE SHOWN BY CIRCLES ON PROFILES. AT ALL POINTS BETWEEN BRIDGE HEADS POINTS THE GRADE SHALL BE ESTABLISHED SO AS TO CONFORM TO A STRAIGHT LINE BETWEEN SAID BRIDGE HEAD POINTS.
 4. THE PRIVATE ENGINEER SHALL FURNISH THE COUNTY ENGINEER WITH GRADE SHEETS AND STATIONING FOR EACH HOUSE LATERAL AND "T" OR "Y" BRANCHES AND SHALL FURNISH STAKES FOR THEM AT THEIR PROPER LOCATIONS WITH STATIONING PLAINLY MARKED. ALL HOUSE LATERALS SHALL BE CONSTRUCTED IN A STRAIGHT ALIGNMENT AT RIGHT ANGLES FROM THE MAIN LINE SEWER EXCEPT AS SHOWN ON THE PLANS. HOUSE LATERALS FROM CHIMNEYS SHALL NOT HAVE AN ANGLE OF LESS THAN 45° WITH THE MAIN LINE SEWER. ANY CHANGE IN ALIGNMENT SHALL BE REQUESTED BY THE PRIVATE ENGINEER.
 5. THE PRIVATE ENGINEER SHALL FURNISH THE HOUSE LATERAL DEPTH AT THE PROPERTY LINE BELOW THE TOP OF CURB ELEVATION FOR EACH HOUSE LATERAL ON THE GRADE SHEET.
 6. BEFORE WORK CAN BE STARTED, THE CONTRACTOR MUST OBTAIN A PERMIT TO EXCAVATE IN COUNTY STREETS FROM THE L. A. COUNTY ROAD DEPT., DISTRICT OFFICE NO. 1012, 151 E. 28TH ST., SAN DIMAS REGIONAL OFFICE, TO COVER THE COST OF CONSTRUCTION INSPECTION AND RECORD PLANS.
 7. IF WORK IS TO BE DONE IN A STATE HIGHWAY, A PERMIT MUST BE OBTAINED FROM THE STATE OF CALIFORNIA, DIVISION OF HIGHWAYS, 128 SOUTH SPRING STREET, LOS ANGELES, CALIFORNIA.
 8. APPROVAL OF THIS PLAN BY THE COUNTY OF LOS ANGELES DOES NOT CONSTITUTE A REPRESENTATION AS TO THE ACCURACY OF THE LOCATION OF OR THE EXISTENCE OR NON-EXISTENCE OF ANY UNDERGROUND UTILITY PIPE, OR STRUCTURE WITHIN THE LIMITS OF THE PROJECT. THIS NOTE APPLIES TO ALL PAGES.
 9. REFER TO SECTION 7-14.1 OF THE STANDARD SPECIFICATIONS REGARDING SAFETY DEVICES.

TO BE CONSTRUCTED IN
 TRACT NO. 28105
 PRIVATE CONTRACT NO. 8833

W.S. 39, C2
 3 SHEETS, 2 PAGES
 SCALE: VERT. 1"=8'
 HORIZ. 1"=60' SEPTEMBER, 1972
 PREPARED IN THE OFFICES OF
 KEAMGRED ENGINEERING CO., INC.
 6706 S. PAINTER AV., WHITTIER, CA.
 62609774
 BY: *[Signature]*
 REG. C. E. No. 11343

THE FOLLOWING LATEST REVISED STANDARD PLANS ON FILE IN THE OFFICE OF THE COUNTY ENGINEER SHALL APPLY IN THE CONSTRUCTION OF THIS PROJECT.

MINIMUM PUBLIC SAFETY REQUIREMENTS	84
MINCE MANHOLE	83
STANDARD MANHOLE STEP	817
BRIDGING FOR SEWER PIPE	848
CRACKING AND BRACING	838
WYS OF THE SUPPORT	838
ALLOWABLE TRINCH WIDTHS	838
LOCKING MANHOLE FRAMES AND COVER	838
NON-BRONZING PRECAST CONCRETE MANHOLE	838

44537

CONSTRUCTION NOTES:

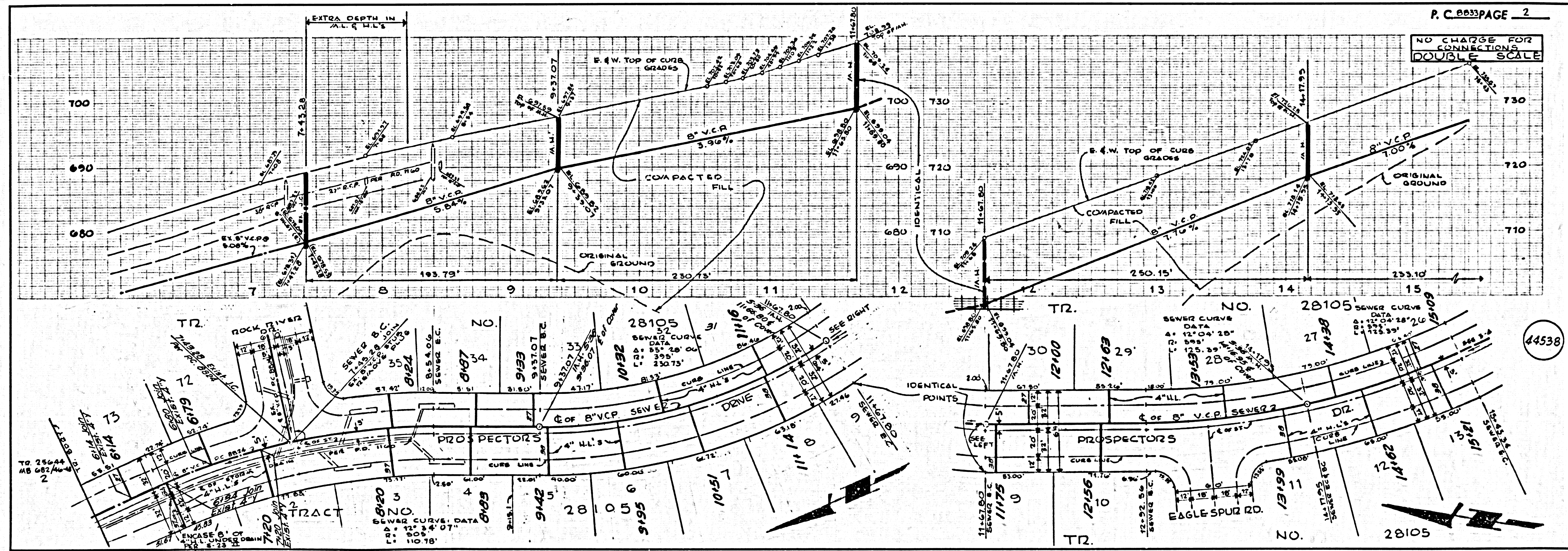
1. WORK SHALL BE CONSTRUCTED ACCORDING TO THE STANDARD SPECIFICATIONS FOR PUBLIC WORKS CONSTRUCTION 1970 EDITION WITH 1972 SUPPLEMENTS AND COUNTY ENGINEER SPECIAL PROVISIONS FOR THE CONSTRUCTION OF SANITARY SEWERS DATED APRIL 30, 1972.
2. THE CONTRACTOR SHALL NOTIFY THE CONSTRUCTION DIVISION BY TELEPHONE, HUNTERSON 6-6746, EXT. 8181, AT LEAST TWENTY-FOUR HOURS BEFORE STARTING ANY WORK UNDER THIS CONTRACT.
3. HOUSE LATERALS TO BE CONSTRUCTED WITH INVERTS AT PROPERTY LINE 4 FEET BELOW C. & G. GRADE EXCEPT AS NOTED.
4. USE OF THE MANHOLES MAY BE USED FOR CONNECTIONS TO SEWERS EXCEPT AS NOTED.
5. ALL STRUCTURES SHALL BE EITHER BRICK MANHOLES PER 8-3 OR PRECAST CONCRETE MANHOLES PER 8-36, EXCEPT AS NOTED.
6. PROVIDE STAKES ON THE PROPERTY LINE OR PROPERTY LINES PRODUCED AT RIGHT ANGLES TO THE SEWER LINE AT THE CENTER LINE OF EACH MANHOLE.
7. MANHOLES FOR IN UNIMPROVED RIGHTS OF WAY TO BE 24 INCHES ABOVE FINISHED GRADE.
8. WITHERED CLAY PIPE JOINTS SHALL BE TYPE "T", "F", OR "B" PER STANDARD SPECIFICATIONS SECTION 300-2.
9. IF A POWER POLE IS WITHIN THREE FEET OF THE SEWER, THE SEWER SHALL BE ENCASED, PER 8-35, CASE II, TWO FEET ON EACH SIDE FROM THE POINT OF INTERFERENCE.
10. IF DURING THE COURSE OF CONSTRUCTION IT IS DETERMINED THAT THERE IS LESS THAN FOUR FEET OF COVER OVER THE TOP OF A MAIN LINE OR HOUSE LATERAL V.C.P. SEWER WHICH IS NOT INDICATED ON THE PLANS, THE PIPE SHALL BE ENCASED PER 8-35, CASE II UNLESS OTHERWISE APPROVED BY THE COUNTY ENGINEER.
11. ALL JOINTS BETWEEN CAST IRON PIPE AND WITHERED CLAY PIPE SHALL BE MADE WITH A RUBBER SLAVEE JOINT, TYPE "C" OR "F", WITH GASKING IF NECESSARY PER STANDARD SPECIFICATIONS SECTION 300-2.
12. SEWERS TO BE TESTED FOR LEAKAGE PER SECTION 300-2.2 OF THE STANDARD SPECIFICATIONS AND SPECIAL PROVISIONS.
13. REINFORCE ALL TRENCHES WITHIN PAVED AREAS TO MEET L.A. COUNTY ROAD DEPT. OF CALIFORNIA STATE HIGHWAY REQUIREMENTS IN ACCORDANCE WITH PERMITS.
14. FULL COMPLIANCE WITH SECTION 300-1.9.3 OF THE SPECIAL PROVISIONS WILL BE REQUIRED FOR BACKFILL IN STREETS. CERTIFICATION OF BACKFILL COARDED & SAND EQUIVALENTS BY A QUALIFIED, REGISTERED TESTING LABORATORY SHALL BE PROVIDED BY THE PERMITTEE PRIOR TO THE ISSUANCE OF A CERTIFICATE OF PARTIAL ACCEPTANCE.

COUNTY OF LOS ANGELES, CALIFORNIA
 HARVEY T. BRAND, COUNTY ENGINEER JOHN D. PARKHURST, CHIEF ENGINEER

APPROVED *[Signature]* APPROVED *[Signature]*

CHECKED *[Signature]* DATE 9/24/72

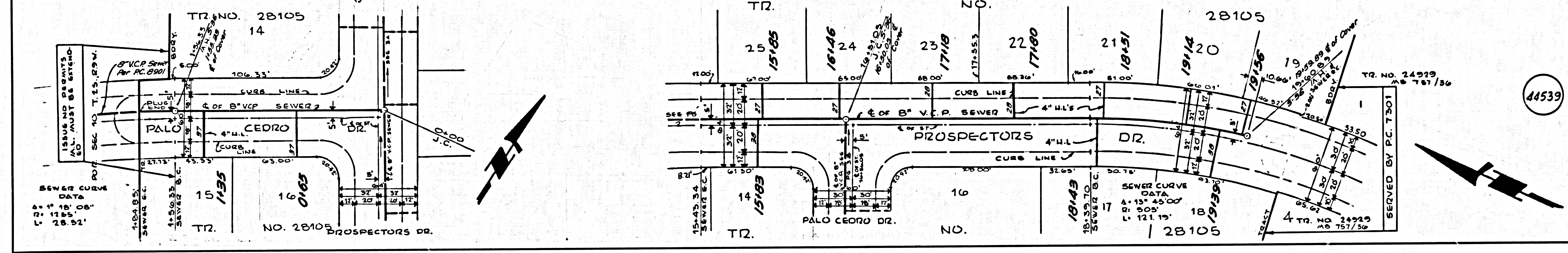
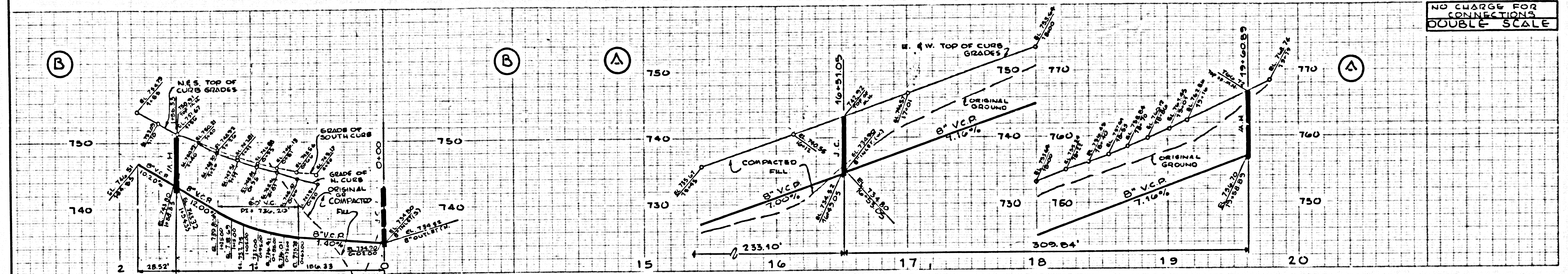
REG. C. E. NO. 19156
 SAN DIMAS BLDG. DIST. 10 I.N. 0250.02



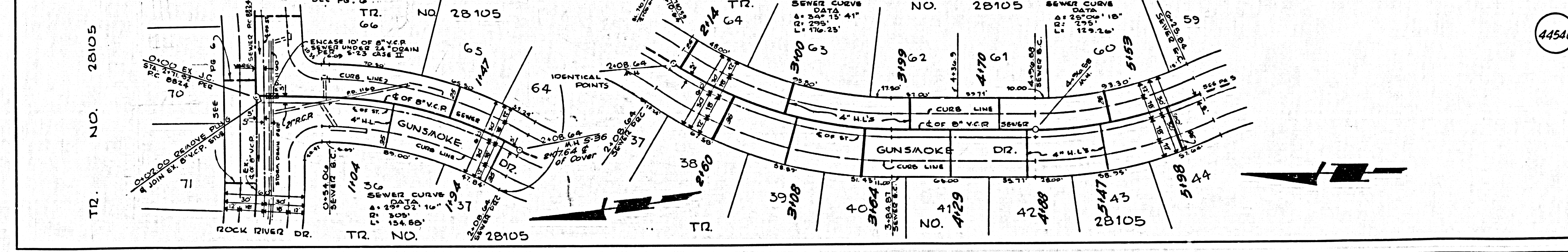
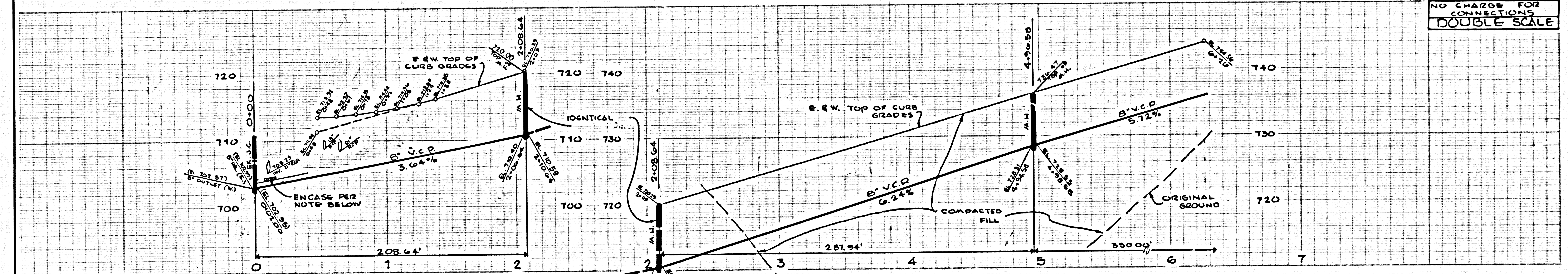
NO CHARGE FOR CONNECTIONS
 DOUBLE SCALE

44538

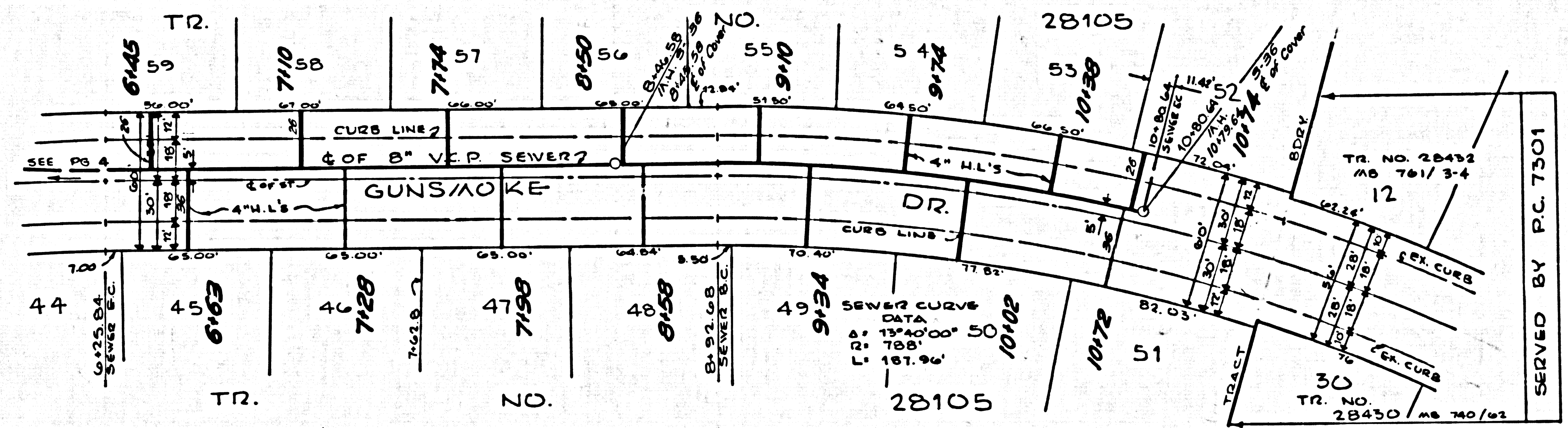
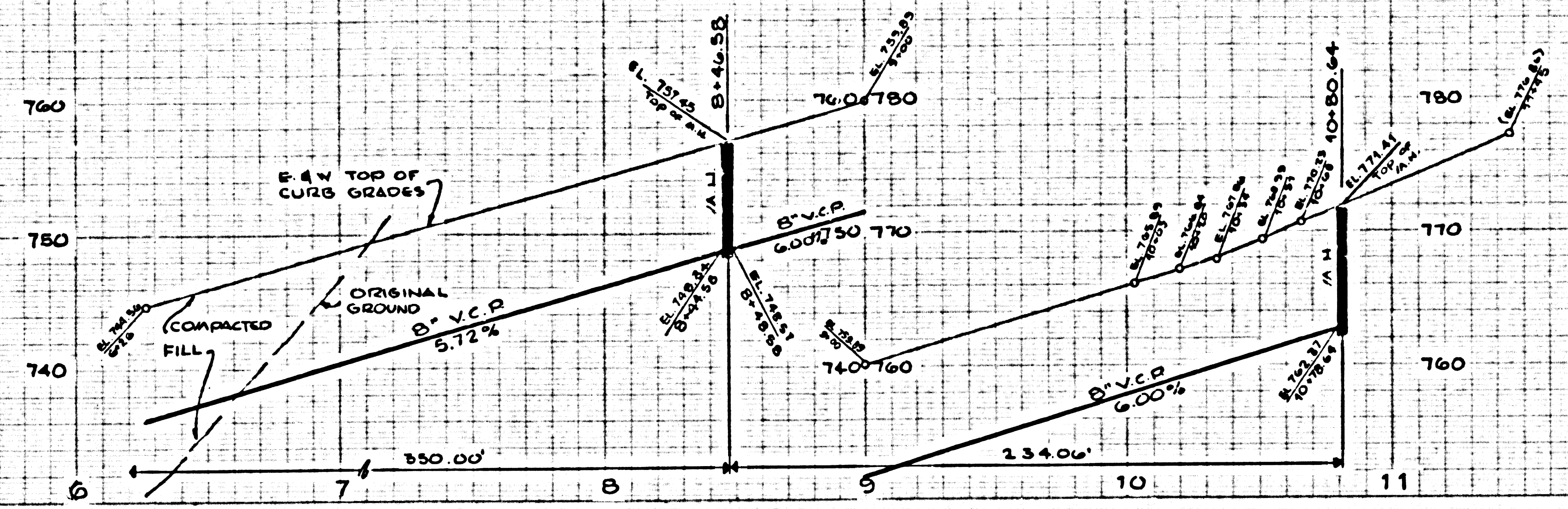
NO CHARGE FOR CONNECTIONS DOUBLE SCALE



NO CHARGE FOR CONNECTIONS DOUBLE SCALE



NO CHARGE FOR CONNECTIONS
DOUBLE SCALE



NO CHARGE FOR CONNECTIONS
DOUBLE SCALE

